

# KEWRIOSITY

Municipal Offices,  
Charles St., Kew, 3101

OCTOBER, 1987

## Integration in recreation for the disabled



● *Stuart Irwin (left) and Richard Smith (right), students in Recreation at Footscray Institute of Technology, who are spearheading an integration through recreation program for disabled Kew residents. Photo: courtesy Progress Press.*

**KEW'S Youth Resource Centre is a focal point for the City's young people and an innovative melting pot for their ideas.**

It is also a temporary office for two young students, Stuart Irwin and Richard Smith, who are running an integration program aimed at bringing disabled Kew residents into existing recreational groups in the community.

Richard and Stuart are students at Footscray Institute of Technology and are majoring in recreation for their Bachelor of Arts Degree.

In July they joined the Kew Integration through Recreation Support Group whose aim is to identify existing local sporting and recreational groups willing to integrate disabled people into their ranks.

A wide range of suitable recreation programs already exist

and many disabled people are now playing darts, board games such as 'Scrabble', are bushwalking, learning archery and getting involved in a number of youth group activities.

Richard and Stuart only have until next month to set up their programs, as their involvement is limited by the constraints of their course. The time spent with the Kew Integration through Recreation Support Group is part of the field work requirement of their curriculum.

The two students hope to get in touch with as many disabled Kew residents as they can in the time left available to them. They are particularly interested in contacting those disabled people without access to activities organised by institutions.

Richard and Stuart can be contacted at the Youth Resource Centre, Derby Street, Kew on Mondays from 10 a.m. to 4 p.m. and Fridays from 10 a.m. to 3 p.m. or by phoning 861 6828 on those days.

Stig Virtanen, Kew's Recreation Co-ordinator, is also available to help with enquiries on 862 2466 during normal office hours.

## Pool closure

**KEW Council has decided to close the Kew Swimming Pool for the coming season because work on the new Recreation Centre is expected to commence early in the new year.**

Council believes the advantages of closing the pool far outweigh the disadvantages. While residents may be inconvenienced in the short term, the most obvious advantage of closure is that any delay in the Centre's commencement, escalates its overall cost to the community.

Closure of the pool also contributes a considerable saving in operating costs. If the pool was to open, an operating deficit in excess of \$70,000 could be expected.

The new Recreation Centre will feature an extensive landscaped area and four heated pools — a 25 metre free-form pool, pools for learners and waders and a slide pool which can also be used for water therapy.

An ozone-based treatment system will ensure that water is clean and not irritating to users.

The Centre will also have a spa and sauna, aerobics and massage facilities and a creche providing child minding facilities for 25 children.

Hawthorn and Camberwell cold water swimming pools are not too far away and Council hopes Kew residents will bear the inconvenience this summer, in anticipation of the opening in time for the 1988 summer season of its exciting, new facility.



# Dates for October

5

KEW Playground Committee meets at North Kew Infant Welfare Centre, Peel Street, Kew at 8.00 p.m.

6

ASTHMA Foundation Education Session, Asthma Foundation, 2 Highfield Grove, Kew at 10.30 a.m. and 7.30 p.m. Lecture by a specialist, video presentation and question time. Ring 861 5666 for more information.

7

COMMUNITY Walk to Willmere Park and the billabong. Meet at the Community House, Derby Street at 1.00 p.m. Fee: \$1.

8

KEW Garden Club meeting at the Senior Citizens' Centre, High Street, at 8.00 p.m. Guest speaker, Mr. Date, will talk about growing orchids.  
KEW Branch Save the Children Fund meeting 10.00 a.m. Hall No 3, Civic Centre, Cotham Road, Kew. New Members Welcome.

10

FRIENDS of Kew Library Book Fair, Kew Civic Centre Hall, Cotham Road, Kew, 9.30 a.m. to 2.00 p.m.

11

**(Week Long 11-18)** 'CONSIDER the Lilies' — Exhibition on a floral theme by three local artists — St Hilary's Anglican Church, John Street, Kew 9.00 a.m. to 9.00 p.m. daily Enquiries on 817 1676. All welcome.

12

KEW Community Action Group meeting, Senior Citizens' Centre, High Street, at 7.45 p.m.

14

THE Mayor of Kew, Cr. Jim Tutt, will be guest speaker at the Kew Historical Society meeting Hall No 3, Civic Centre, Cotham Road, Kew, at 8.00 p.m.  
HYDE Park Fellowship meeting at 2.00 p.m. for the sharing of "Favourite Things".

19

THE Kew Senior Citizens' Week Committee is holding its initial meeting at 2.00 p.m. in the library of the Kew Senior Citizens' Centre, High Street, to plan its activities for 1988. Interested in helping? Then you're welcome to come along.

21

KEW Legacy Widows' Club meets R.S.L., 63 Cotham Road, Kew at 11.00 a.m. Ring the President 817 5097 or Secretary 859 2097 for more details.  
KEW Arthritis Self-Help Group meets Hall No 3, Kew Civic Centre at 10.30 a.m. Morning tea provided and a guest speaker will attend.

22

ROYAL Women's Hospital Kew Auxiliary meeting in Hall No 3, Civic Centre, Cotham Road, Kew at 2.00 p.m. New members are welcome.  
SAVE the Children Fund Annual Basket Luncheon and Musical Programme at North Balwyn Church of Christ, 9 Vicars Road, North Balwyn at Noon. Donation \$6.00. All welcome.

24

FAMILY Folk Dancing with 'Shenanigans' at East Kew Uniting Church Hall, Normanby Road from 7.30-9.00 p.m. Cost \$12 per family and new participants are very welcome.

28

KEW Community Choir 'Singing for Fun' night at 35 Ramsay Avenue, East Kew at 8.00 p.m. Cost is \$4 per person. Enquiries on 859 2009.  
KEW Full Day Care Committee monthly meeting at Strathalbyn Street Infant Welfare Centre, Kew, at 8.00 p.m. Committee needs your support — all welcome.  
CAMELLIAS, Azaleas and Bulbs are the topics set for discussion at the Kew (Daytime) Garden Club which meets at the Senior Citizens' Centre, High Street at 1.30 p.m. sharp. Guest speaker is Maurice Stratton.  
Telephone 859 2977 for enquiries.

## Coping with change and loss

**A four session course on "Coping with change and loss" is being held at the East Kew Uniting Church, 142 Normanby Road, from October 12 to November 2.**

It will be led by Dr Noel Schultz, an experienced educationalist and counsellor, who is Minister at the church.

The course will enable participants to explore their experience of loss of either a partner, of independence, health or of their home, in a supportive environment. Its aim is to help participants gain insight and encouragement from counsellors and to look forward to the future with renewed optimism.

According to Dr Schultz, the experience of loss can be so overwhelming that some people have doubts about ever getting over it. Many have difficulty coping with the strong feelings arising from past or impending losses, but with help, are able to discover new areas of interest and activity.

Enrolments for the course are limited and anyone interested in attending is asked to register early to avoid disappointment.

Telephone 859 1206.

## Did you know?

**THAT the State Government has a Home Energy Advisory Service to help people on fixed incomes reduce their energy costs.**

The service is free and you can apply for it if you have spent a total of \$100 or more on household energy in any three-month period in the last year, or if you have a Commonwealth Health Card, Pensioner Health Benefits, Health Care, Health Benefits, Personal Treatment Entitlement or Transport Concession.

To obtain your application form or make further enquiries about the service ring 890 1771.



# Commentary

## Mayor's Column

**KEW Council is currently reviewing its town planning requirements at a time the State Government has proposed two important strategies on planning and development in Victoria.**

In its first document, "Shaping Melbourne's Future", the government has stated its intention to curb the outward expansion of the city and to limit the costs of providing services to housing.

It plans to allow increased density and development in the middle and inner areas where there are established human services and essential service infrastructures.

The second document, "Residential Development Provisions for Victoria", outlines draft proposals for totally revising residential development standards in metropolitan areas.

The new standards are aimed at achieving a quicker, more efficient and more flexible process for subdividing land and the strategy includes proposals for increasing the variety and the density of

development.

It is Council's intention to develop land planning mechanisms specifically designed to enhance the residential character of Kew and, in doing so, to identify those areas around existing commercial centres which are better suited to a commercial and residential mix and those areas which should remain completely residential.

Council is particularly concerned about the preservation of significant individual buildings, groups of buildings and streetscapes.

It is also concerned about an alternative strategy for private institutions, including hospitals and schools.

Council intends to publish details of planning and conservation controls for public comment when its proposals move beyond the initial stages.

We have a system where you can participate constructively in matters of this kind, or in matters which are of concern and interest to you.

Committee meeting notes are available in advance in the Kew



● *Jim Tutt, Mayor of Kew.*

library and meetings are open to the public. A list of committee meeting dates and times is published in each issue of Kewriosity.

The openness of local government has always been a feature at Kew and Council will be encouraging your input to its consideration of these important land planning issues.

Cr Jim Tutt Mayor

## New library a great hit

**THERE'S certainly no doubt about the popularity of Kew's new library which opened on June 22.**

More than 1,000 new members enrolled in the first two months of operation — an increase of over seventy-five percent on the usual membership rate.

Library staff have noticed that patrons now spend considerably more time in the library than they did before and that the study and casual seating sections are heavily patronised.

The magazine and leisure reading area with its tranquil outlook over Alexandra Gardens is extremely popular and the library's innovative lighting system has also attracted wide attention.

Borrowers are very happy with the after-hours return chute facility and with the extended four to five week loan period.

## Informing the Kew community

**EACH year the Kew Council produces a Community Directory which is your entry into Kew's information network.**

The directory provides you with valuable information on the services, resources and facilities available to you and each year it must be updated.

If your organisation is listed in the 1987 directory and the details need to be changed for our 1988 edition, please contact our Information Officer, Olwyn Eaton, as soon as you can on 862 2466.

## Trill with the Phil!

**THE Royal Melbourne Philharmonic Choir is looking for singers of all voices, particularly tenors and basses.**

If you enjoy the stimulation and rewards of performing great musical works, ring the Secretary on 306 9005 after hours.

## Council meeting times for October:

6 Standing Committees  
7.30 p.m.

13 General Purposes  
Committee 7.30 p.m.

20 Council 8.15 p.m.

Meetings are held in the  
Committee Rooms of the  
Municipal Offices and are  
open to the public.

## Community recreation program

**RECREATION activities for community members of all ages and abilities are again being offered by the City of Kew. Programs run throughout the school term and are aimed at providing you with recreation opportunities that enhance your sense of well-being.**

Our new term commences on October 5 and there are still vacancies for our Exercise to Music, Water Exercises and Swimming, Water Playgroup and Tennis for Fun classes.

Full fees for the term \$26 or concession \$20.

For enrolments or enquiries, ring Donna Morton in the Social Development Office, on 862 2466.



# 4 Notices

A 'Back to Kew' garden party will be held in the grounds of 'Ross House', 292 Cotham Road, Kew, on Sunday October 25 from 3 pm to 7 pm. Timed to coincide with the commencement of daylight saving and the Spring Racing Carnival when many interstate guests and past Kew residents will be visiting Melbourne, the garden party is being organised by the Studley Park branch of the Liberal Party.

Organisers are hoping a large number of past and present Kew residents will attend and some eminent and "famous" Kewites have already promised they'll be there. Dress is smart casual and the cost \$18 per single. Booking request forms available from Margot Randall on 861 8331 or Mrs Hill on 861 8975. Bookings close October 16.

Kew Community House at 6 Derby Street, Kew is the venue for a 'Laminating Day' being held by the Highbury Grove Playgroup. Bring along your posters; birth certificates; marriage certificates; children's kindy or other special drawings you treasure; special birthday or anniversary cards; maps and even fabrics and dried flowers, and preserve their unique characteristics by laminating them. The service is offered between 9 a.m. and 4 p.m. on Saturday, October 24. Prices on application and further details from Karen on 862 1189.

Studley Park Unit of the Australian Red Cross Society, invites you to their 'Cards Day' on October 12, commencing at 11.30 a.m. in Hall No 3, Civic Centre, Cotham Road. Cost is \$6.00 and a basket lunch is provided. Come along and bring your friends and you'll be helping to raise funds for Red Cross. Further information may be obtained by ringing 859 1026.

Kew Citizens' Band holds a regular 'Bingo Night' each Saturday at the Kew Music Centre, East Kew Primary School grounds, corner Windella Avenue and Beresford Street, East Kew. Friendly atmosphere in a bright, air-conditioned venue, free supper, good prizes, Jackpot and lucky number games, all provide you

with an enjoyable night out and an opportunity to support your local band. Eyes down at 8.00 p.m.

North Kew Tennis Club, Corner Grandview Terrace and Peel Street has started its 1987/88 season but still needs new members for both social and competitive tennis. Ring Eve Downey on 862 3085. Season ends August 31 next year.

## Finding your fete

**THE Royal Victorian Eye and Ear Hospital, Kew Ladies' Auxiliary, are holding their annual Mini-Fete on Saturday, October 24 from 11 a.m. to 4 p.m. at 159 Peel Street, East Kew. All welcome and afternoon tea available.**

A Springtime Fair and Family Fun Day is being held at the Uniting Church, Normanby Road (near High Street), East Kew on Saturday, October 10 from 9.30 a.m. Charcoal Grill, 'Hot Dogs', morning and afternoon teas; lucky dip, face painting, games, a Scottish Piper, Fire Engine; stalls for cakes, sweets, produce, plants, books, toys and 'White Elephant'.

"Karana", Baptist Home for the Aged, Annual Fete at 55 Walpole Street, Kew, on Saturday, October 10 at 1.00 p.m. Residents' crafts, cakes, jams, fancy goods, plants, treasure and afternoon teas all for sale.

Holy Trinity's Annual Church Fair is on again Saturday, October 24 from 9.00 a.m. to 4.00 p.m. Held in the Church grounds, corner High and Pakington Streets, Kew, stalls include cakes, books, plants, sweets, jams, fancy goods, trash and treasure, bric-a-brac and games.

## Polio Plus Campaign

**A combined committee of Kew and East Kew Rotarians has accepted Rotary International's challenge to raise at least \$25,000 to save 125,000 children from polio.**

Rotary International, a world-wide service organisation of business and professional men, is conducting the campaign which aims to immunise the children of the world against polio.

This devastating disease is all but forgotten in developing countries but it continues to afflict tens of thousands of children around the world.

Every day, seventy-five children die instantly from the disease and a further 750 are disabled for life.

Immunisation is the most cost effective and most successful weapon used against polio, but until now it has been tragically under-utilised.

It costs only 20 cents to immunise a child against the disease in any part of the world.

Members of the joint committee have been approaching Kew business people by letter and a follow-up personal visit, in an effort to get strong community support for their campaign.

Donations of over \$2 are tax deductible and if you would like to help them in their task, then please send your donation to P.O. Box 360, Balwyn, Victoria, 3101.

A receipt will be returned.

## Safety for your baby and child

**THE Children's Accident Prevention Centre at the Royal Children's Hospital, provides parents and the community with information and advice on problems of safety for babies and children in the home and elsewhere.**

Childhood accidents have reached epidemic proportions in Australia and accidental injury is the single biggest cause of death for our children.

The Children's Accident Prevention Centre aims to reduce childhood accidents by alerting parents to the problem areas and by educating the community on preventive measures.

The Centre provides information and advice, has displays on child safety and organises a series of lectures for parents and the community.

You can call in to the Centre at the Royal Children's Hospital, Administration Entrance, Flemington Road, Parkville or you can ring them for their advice. Telephone 345 5085.



# Scouts to visit Melbourne

**ABOUT 4,000 overseas scouts and scout leaders in Australia for two important events in the world scouting calendar, will need a home in Melbourne for two or three nights.**

Organisers are expecting more than 14,000 scouts from over 78 countries to be here for the 16th World Jamboree in Sydney and the 31st World Scout Conference in Melbourne.

Accommodation for the Scouts is needed in the week before Christmas prior to the start of the Jamboree and again in the second week of January, after the Jamboree ends.

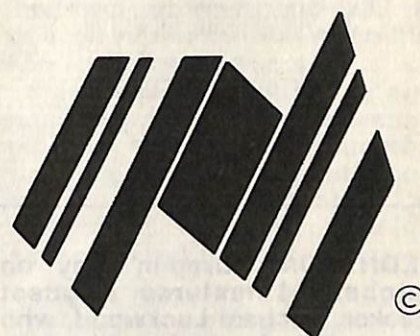
The Jamboree is the first item in the programme of Australian Bicentennial events and will be held at Cataract Park, near Sydney, from December 30, 1987 to January 10, 1988.

The World Scout Conference runs from January 11 — 15, 1988 and will be hosted in Melbourne by The Scout Association of Australia.

Both male and female adult leaders and boy and girl scouts need billeting, if possible in multiples of two.

If you would like to offer the scouts some of our famous Aussie hospitality, then please contact Ian Seeger on 836 6002.

## Bicentennial notes



Australia  
1788-1988

**UNDER the auspices of the Kew City Council, the Kew Bicentennial Concert Committee is organising a major musical event which is scheduled for Saturday, September 10, 1988, at the new Melbourne Tennis Centre.**

This concert will be one of Melbourne's major musical events in Australia's Bicentennial year and will include a choir of two thousand and an accompanying orchestra of two hundred.

Participation in this memorable evening is open to all schools, church choirs, musical groups and citizens of Kew and surrounding suburbs.

A committee of enthusiastic residents has spent several months organising the concert but is now in need of some additional volunteers to provide back-up help in the following areas:

Secretarial  
Co-ordination  
Public Relations  
Advertising  
Treasurer

If you could devote some of your spare time and would like to be part of a hectic but interesting and worthwhile year's work helping to put together what we believe will be the greatest indoor choir Australia has ever seen, then please contact Alan Chung at the Municipal Offices on 862 2466.

Peter Wallinga  
Hon. Chairman  
Kew Bicentennial Concert  
Committee

## Traffic management

**THE local consultative committee is currently reviewing the traffic management scheme installed in the area bounded by High Street, Valerie Street, Asquith Street and Princess Street.**

The committee will be presenting its report on the review to the

Physical and Community Services Committee at its meeting on October 6.

The detailed design of the elements of the scheme adopted by Council for the area bounded by Cotham Road, Burke Road, Harp Road, High Street and Charles Street, is currently under way.

Construction is expected to commence in January or February next year.

## Community education at M.L.C.

**METHODIST Ladies' College new indoor sports centre is the venue for some of the term 4 community education short courses being held there.**

You can prepare for the summer season by enrolling in adult swimming classes — beginners to advanced; aerobics; T-H-T Classes

(otherwise known as tummy-hips-thighs); dancing and badminton.

Other popular courses again being offered include computers; word processing; spreadsheets; art and craft and cookery for the festive season.

There's a myriad of other classes to choose from and the term runs from October 5 to November 30, 1987.

Prices on application; student concessions available. Ring the Community Education department of M.L.C. on 819 2599.

## New Resident's Kit

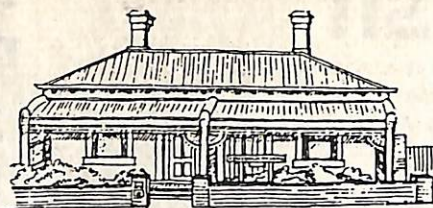
**IF you are new to Kew, then you need a New Resident's Kit. This kit contains valuable information**

**about facilities and resources in Kew and it can also tell you about Council requirements.**

Ring the Information Officer, Olwyn Eaton, on 862 2466, or call in to the Municipal Offices, Charles Street, get your Kit and make the most of Kew!



## KEW COMMUNITY HOUSE



6 DERBY STREET, KEW, VIC. 3101  
Telephone: 862 3126

**WEDNESDAY 'Drop-in' Day** on October 14 features a guest speaker, Michael Lockwood, who plans to talk about "Homelessness in Kew". This tragic issue confronts many people in our community and was raised higher in my consciousness quite recently, when two young homeless men who called in to Community House, made overtures about staying the night because they had nowhere else to go.

They thought that Community Houses provided accommodation to people in need in the community and it took some time to explain that our Community House provides an informal setting for those people who are lonely and just want some company; for those who want to join some of our organised activities such as cooking, craft, discussion groups and language classes and for those who enjoy

just coming along to see who is there on drop-in day in need of their help.

Their situation also reminded me that there are many people in our community who do not have an extended family network for support and do not have a friend's network who can help them either.

Membership of a group helps in the integration process in any community and a sharing of group activities creates a positive attitude and helps to build self-esteem and self-confidence.

We'd love you to join us on October 14 to hear Michael Lockwood speak. The session is very informal, starts at 11 a.m. and your donation of \$1.00 helps towards the cost of lunch. Please feel free to drop in on any 'Drop-in' day — your company would be most welcome.

Judy Price  
Co-ordinator

## News from Nursing Mothers' . . .

**EVERY** October the Nursing Mothers' Association of Australia reminds the community that breastfeeding is the best start in life for all babies and that a bit of help and encouragement to a breastfeeding mother goes a long way.

It takes time for a mum to get used to her baby, and the support of her family and friends can help to counteract some of the negative influences in her busy, modern lifestyle.

Just because breastfeeding is natural, doesn't mean that

mothers don't need help with it or encouragement to continue.

Nursing Mothers' provides a unique service to women who want to breastfeed, and during their 'Breastfeeding Awareness Month' in October, the Kew Group has arranged a special programme they hope mothers and others will support.

October 5 at 8.00 p.m. is a discussion meeting — "Breastfeeding your older baby (over 12 months) and Introducing solid foods".

## An update on "Belford Oaks"

**OUR** new government and Council subsidised full-day care centre being constructed at 3 Belford Road, Kew, is taking shape, at last!

After years of pleading, cajoling, organising and planning, we can now see the fruits of our labours, with a reinforced concrete slab laid and a timber frame taking shape.

We're hoping the Centre will be completed by mid-December this year and are planning on opening in February, 1988.

As with most projects of this kind, the organisation is left to a very willing but very busy band of helpers, and the management committee would love to hear from you if you intend to send your child to the Centre when it is complete, or if you feel you would like to give us your help.

We particularly need people with childcare experience (not necessarily professionals you understand — mums, grannies, dads and other family members have childcare experience too) and good organisational skills, who would like to be involved with planning for the Centre.

There are vacancies on the sub-committees dealing with policy and procedure, staffing, equipment, fundraising and finance. If you have any experience or expertise in any of these areas, then please get in touch, or come to our monthly meeting on October 26 at 8.00 p.m. at the Infant Welfare Centre, Strathalbyn Street, East Kew.

Telephone Yvette Poznanski on 898 3253 after hours.

October 14 at 1.30-3.00 p.m. — Afternoon tea. Bring a plate if you can. Babies and toddlers welcome.

October 26 at 1.30-3.30 p.m. — "New Mothers" afternoon tea especially for mothers of babies from birth to 3 months.

October 29 at 10.00 a.m.-noon — morning coffee. Bring a plate if you can. Babies and toddlers welcome.

For more information ring 861 9665 or 859 8065.

Helpful information will also be displayed in the Kew Library during October.





## Neighbourhood watch

**DO you live in the area bounded by Normanby Road, Cotham Road, Burke Road and Harp Road?**

Then you live in Neighbourhood Watch Area H001 and we're inviting you to come to our Annual General Meeting on Monday, October 5 at 7.30 p.m.

The meeting will be held in Hall No 3, Civic Centre, Cotham Road, Kew and our guest speaker is Inspector John Bloggs. Inspector Bloggs, now retired, was formerly a member of the Victoria Police Force and he has chosen to speak about Police Powers.

After his speech we hope to show a new video on home security.

Area H26 neighbours bounded by Studley Park Road, Wills Street, The Boulevard and Princess Street, are meeting at the Kew Bowling Club, 14 Wellington Street, Kew on October 14 at 7.30 p.m.

Their guest speaker is Mr. Howard Bratten of The Victims of Crime Assistance League. The meeting is open to all Kew residents.

Enquiries to Max Cattach on 862 1856.

## More on Kew PMs

**IN our June newsletter we brought you the news that Kew had provided Australia with three Prime Ministers and we subsequently received an interesting item on the subject from Ian Mathers, President of the Kew Citizens' Band.**

Ian informed us that during World War II, Kew Citizens' Band used to play at regular intervals at the home of former Australian Prime Minister, the late Sir Robert Menzies.

Sir Robert's son, Ken, and John Bramwell, son of the band's musical director during those years, were in the same army unit during the war.

Sir Robert and Lady Menzies held fundraising fetes at their home in Howard Street to help raise money for the 'boys' army unit welfare fund.

## Good Gardening

**SPRING is in the air and the thoughts of many turn to hot, hazy, lazy Sunday afternoons with a few friends around, an ice-cold orange juice or a glass of wine, and a succulent, sizzling barbecued steak.**

In an area like Kew where most gardens are already well established, a barbecue is often a late but very welcome addition, but the siting for it often presents the home handyman with some problems.

There are four things you should consider when choosing the best site for your barbecue.

The barbecue area must be large enough to accommodate your family and friends without crowding and must allow space for outdoor furniture, too.

To save your legs it should be close to the kitchen or dining room so that it is in reach of crockery, cutlery, food and drinks.

## Beware of the dog!



**OUR By-laws Officer, Ron Cook, is receiving an increasing number of complaints about wandering dogs upsetting garbage cans outside residents homes.**

We thought it timely, in view of recent changes to the Dog Act, to remind dog-owners of their responsibilities — because those owners who do not properly supervise their dogs can cause their neighbours a great deal of trouble.

If you don't ensure that your dog is contained within your house boundaries when you are out during the day or asleep at night, you could face a fine of \$100 for allowing your dog to roam free between sunrise and sunset, or \$200 between sunset and sunrise.

Over the next few weeks, Ron will be conducting early morning random patrols and any dog found without its owner firmly attached by lead or choker-chain, will be impounded and will earn its

Try and choose a site that provides a combination of sun and shade because you'll be using your barbecue in both summer and winter. Deciduous trees provide shade in summer and will let through the winter sun when they lose their leaves.

Consider prevailing winds, especially those from the south and west. You will want your steak to sizzle slowly and quietly so a sheltered area is a must. If this presents a problem, consider building a trellis or screen.

Remember, too, that you can't light an open fire on a declared fire ban day. For this reason, gas barbecues are ideal.

Once you've built your barbecue, be neighbourly and invite some of the people in your street to join in the fun!

Bruce Schroder  
Superintendent  
Parks and Gardens

beloved an infringement notice and a hefty fine!

Remember, too, that you must make sure your dog is on a lead or choker-chain when you go walking in the parks and gardens around Kew. This is particularly important on weekends when so many people want to get out in the fresh air and enjoy our open spaces.

We want to help you enjoy the pleasures of owning a pet, so if you have any queries about your community responsibilities as a dog owner, please contact Ron on 862 2466.

Householders — you have a responsibility, too, to make sure you put your garbage in a well-constructed bin with a tight fitting lid — NO cracked or broken bins and no boxes or garbage bags in our municipality PLEASE! — Ed.



## Deadline

*Kewriosity* is produced by the Information Officer for the City of Kew and a community based Editorial Committee. Copy for the October issue should reach the Municipal Offices by October 5.



## Anyone for cricket?

**TWO local cricket clubs gearing-up for the 1987/88 season are looking for new players.**

The newest club is the recently formed Kew Willsmere Cricket Club based at Willsmere Cottages.

Its aim is to foster cricket among Willsmere young people and to offer entertainment and friendship to cottage residents and the Willsmere community.



The club hopes to field two teams in the Eastern Suburban Cricket Association.

Ted Sporton, club President, can help with enquiries on 898 2407.

Deepdene Uniting, an established cricket club, is based at Hays Paddock and is fielding four junior sides — two under 12's, one under 14 and one under 16 — and three senior sides this season.

Play starts in October and new members are most welcome. Ring 857 8651 for more details.

## Footy news

**THERE'S bad news and good news from Kew Football Club this month!**

Our Seniors lost their Grand Final to Monash Blues by 25 points, while our Reserves defeated Old Melburnians by 35 points.

Unfortunately, the Club Eighteen lost its first semi-final to Port Colts.

Kew Seniors have been prominent in finals series since joining the Victorian Amateur

Football Association in 1949. We've won six premierships and have been runners-up twice.

Since the reserve team was formed in 1960, it had only won one premiership — in 1963 when it defeated St Kevin's to become undefeated Premier's and champions.

The Reserves lost their 1965 Grand Final against Ormond and, until now, had not appeared in a finals series since finishing fourth in 1966.

Both 1987 Grand Finals were played at V.A.F.A. headquarters at Elsternwick Park. Kew went to a four goal lead over Monash at half-time, but this was pegged back during the third quarter and Monash went on to win by 25 points at the bell.

Final scores were Kew 10.11.71 defeated by Monash Blues 13.18.96. Best players were Nigel Griffiths, Joey Busuttill, Gino Kalac, Brett Burden and Tony Peric.

The Reserves, in an impressive performance, led at every change and went on to score a solid win. Kew 13.15.93 defeated Old Melburnians 8.10.58. In a team of good players, Joe Casuria, Ashley Royston and Lee Bradley stood out.

Club Presentation Night is being held at Studley Park Receptions, Kew, on Friday, October 2 when all the Best and Fairest trophies will be presented.

Further details from Michael Bollman on 653 0481 or 818 6536.

## More pre-school music and movement

**THE Kodaly-Orff approach to pre-school music and movement includes singing and dancing, use of percussion, musical games and a balance of active and quiet activities.**

Classes develop musical skills, listening and speech, beat, rhythm and melody, self-confidence, co-ordination and creativity.

Ring Karen Fuller for more information or to enrol your child on 819 3787.

## Keeping you informed



**AS well as serving as a referral centre for a wide range of subjects of public interest, your Citizens' Advice Bureau also offers you the services of a qualified social worker.**

Do you have personal or family problems which you would like to discuss with someone who has had experience in helping those with marriage break-downs and other disruptions to family life?

If so, perhaps our social worker can help. Consultations are totally confidential and free of charge.

Our social worker is available at our newly located premises adjoining the new Kew Library, each Monday and Tuesday from 10 a.m. to 3 p.m., or you can call in or telephone to make an appointment for a more convenient day or time.

The Bureau is open each weekday from 10 a.m. to 3 p.m. and our number is 861 5244.

## Little Athletics

**KIDS! — if you want lots of fun and a chance to learn some new skills, why not join Kew Little Athletics for the coming season?**

If you are aged 6 years and less than 15 years by September 30, you are eligible to register and you should come along to our registration day on October 3 from 9.15 to 11.15 a.m. at Stradbroke Park, corner of Burke and Harp Roads, East Kew.

You will need to bring a copy of your birth certificate, or other proof of your age, with you.

We hold weekly meetings on Saturday mornings from 8.50 a.m. until about 11.30 a.m. and our season starts on October 10. You can still register on that day if you haven't been able to do so before, but you will have less time to start your activities if you do.

Remember to bring with you a pair of running shoes, a t-shirt and shorts and if you want to, Dad, Mum and your brothers and sisters — Little Athletics is great for family fun and fitness and a great way to make new friends, too!

Any questions? Ring Mrs. Glass on 818 5573 and she'll be able to help you.