

KEWRIOSITY

Municipal Offices,
Charles St., Kew, 3101

November 1986

Kew Faces



Some Kew faces with bodies attached, as seen by Bruce Rigby.

If you were at the 1986 Kew Festival or if you shop at Kew Junction, chances are you have been photographed by **Bruce Rigby**.

Bruce set up a "self portrait" stand at the Festival and people were invited to take their own portraits. He used a special type of film which gave an instant polaroid print as well as providing a large format negative from which blow-ups could be made.

Bruce also wandered around Kew Junction and took a number of candid shots of the folk passing by.

He has now put all of this together into a one-man exhibition entitled **Kew Faces**.

At the exhibition there will be entry forms for the Kew Bicentennial Photographic competition being sponsored by the Kew Bicentennial Committee, the Kew Festival Committee and local traders.

It is open to amateur and professional photographers.

This competition, entitled "Images of Kew", will be held over the next two years and all entries will be eligible for inclusion in a collection of contemporary photographs representing a "moment" in Kew's history, 200 years after the first European settlement of Australia.

We are looking for entries which show Kew as it is today.

You have until the end of February 1987 to prepare your entry, and prizes of \$100 each will be awarded in several categories.

The exhibition, **Kew Faces**, will be held in Hall 3 of the Civic Centre, from November 2nd to 8th. It will be open on Sunday, 1pm—6pm; Monday, 6pm—9pm; Tuesday, 10am—4pm; Wednesday to Friday, 6pm—9pm and Saturday, 9am to 4pm.

For more information, please contact Rhys Williams on 861-7566.

A gentle reminder about Kew's By-laws

Dogs

There are a number of requirements to which owners must comply if they are to enjoy their pets without incurring by-law infringement notices.

For example, if you own a dog over six months old, you must register it before April 10th, 1987. In the recent budget, registration fees were altered. An unsterilized dog costs \$30 to register and a sterilized dog, \$20. Pensioners pay half this fee, but proof of sterilization must be produced for the lesser amount.

Penalty for not registering your dog is twice the registration fee. You can be fined if you allow your dog to wander at large during the day or night or if you own a German Shepherd which is not under effective control.

Dogs found wandering by the By-laws officer may be impounded. Complaints received about dogs will be followed up with early morning inspections, especially on garbage collection days and the owner will be liable for a fine or may wish to defend the matter in court.

Avoiding all the above unpleasantness is quite simple. Make sure you register your dog and keep it on your premises or under supervision on the street.

It's the neighbourly thing to do!



Ooops!

There is an error on the information voucher included with the rate notices. The Mayor of Kew is Councillor Joe Orlando, not Councillor Phyllis Hore as is shown on the list of Councillors.

Apologies to both Councillors for any ensuing inconvenience.

inside

Dates and notices	2,8
Commentary	3
Profile: Cr Phyllis Tinney	4
Kew rowing champion	6
Goodbye George Grant	7
Community news	5-8

Budget 86/87 p3

Dates for November

- 1** **Strawberry Fair at St Paul's Anglican Church**, cnr Hale Street and Windella Avenue, East Kew from 9.30am—1pm.
- 3** **Country Women's Association Inc. Kew-Balwyn Branch.** Annual meeting 1pm East Kew Uniting Church, Normanby Road. New members welcome. Contact 819-1686.
- 8** **Monster Spring Fete** at the Paton Memorial Church Hall, Burke Road, Deepdene from 9.30am—4.30pm.
Annual Fete and Gala Day to assist citizens with intellectual disabilities run by Kew Cottages and St Nicholas Parents' Association, in the grounds of Kew Cottages, cnr Princess and Willis Streets, from 10am to 4pm.
Twilight Spit Roast at the Scout Hall, Glass Street, East Kew. Families and friends of the 4th Kew Scout Group welcome. Phone M. McKenzie, 49-6001, for tickets.
- 12** **Hyde Park Uniting Church Fellowship**, 2pm. Speaker from "Trading Partners". Come along and see the handcrafts of other countries.
Kew Historical Society, Manchester Unity Hall, Union Street, 8pm. Speaker: Mrs Margaret Thompson, on National Trust properties. Visitors welcome. Contact Sue Leong, 817-4660.
- 13** **Kew Garden Club**, 8pm, Senior Citizens' Centre. Prepare for summer! Bruce McKinley from Nylex will discuss a variety of watering systems.
- 16** **Hyde Park Uniting Church 70th Anniversary**, 11am. Guest speaker: Rev. L. Turner, ex Moderator of the Uniting Church. Music of the Tongan Christian Fellowship, also incorporating the Sunday School Anniversary. At 2.45pm a pleasant Sunday afternoon with music from Mr Geoff Smith and the Tongan Youth Choir. All are invited for afternoon tea in the hall.
- 17** **Walk to Kew Billabong.** Meet at 1pm at the Community House, 6 Derby Street. Register at the Community House or phone 862-3126.
- 19** **North Kew Municipal Kindergarten, Annual General Meeting**, 7.30pm at 152 Pakington Street. Guest speaker: Libby Dyer from Inner East Foster Care will commence at 8.30pm. Everyone welcome.
- 25** **Country Women's Association Inc. Kew-Balwyn Branch.** Craft Day and end of year break-up, 10am. East Kew Uniting Church Hall, Normanby Road. Bring plate for shared lunch. Contact 819-1686.
Kew Philharmonic Society's third subscription concert at Paton Memorial Hall Uniting Church, Burke Road, Deepdene at 8pm. Program will include Christmas music by choir and orchestra. Inquiries: 817-3186, 817-1881.
- 27** **The Probus Club** of Kew's monthly meeting will be at 10am in the RSL clubrooms.
Kew Arthritis Self Help Group, 10.30am at the Senior Citizens' Centre. Last meeting for 1986, with Christmas party. Speaker: Shirley McNab. Visitors welcome. Contact 862-2021, 836-9794.
Kew Daytime Garden Club Social Afternoon at Senior Citizens' Centre, promptly at 1.30pm.
Early Planning for Retirement Group's quarterly meeting at 8pm at Kew Civic Centre, Hall 3. Speaker: Mr Eric Jones on "The History of Brasses in the English Churches". Contact 817-1621.
Sale of goods by Voluntary Helpers Association of Carnsworth-Garopna.
- 29** New and pre-loved clothes, furniture, knick-knacks. 9.30am at 18 Barry Street.

North Kew Tennis Club

Are you interested in playing tennis? New members most welcome at the North Kew Tennis Club.

All members, friends and visitors are invited to Social Tennis Days on the second Sunday of each month at 11am. November 9th, December 14th, January

11th, 1987, February 8th, 1987. Barbecue facilities available. Contact **862-3085**.

Kew Croquet Club

Nearly another year done, Whoever lost and whoever won, we have our turns in the game of fun. For any information phone Secretary **861-5658**.

Notices

Award to Kew Lion

Mr Herbert F. Joyce, former District Governor and twice President of the Kew Lions Club has become a Melvin Jones Fellow.

This award, named after the founder of Lions Club International, is rarely given.

Herbert Joyce epitomises the spirit of "lionism" with his leadership and dedication over a long period of time and is a very worthy recipient of this most coveted award.

Youth of the Year Quest

Do you seek to gain experience in leadership, personal improvement, sportsmanship, citizenship, community involvement and public speaking?

If you do and you are aged between 16 and 19 let Lions help you acquire this experience.

The **Youth of the Year Quest** is a project of Lions Club International Multiple District 201 Australia, Papua and New Guinea. Awards are made at each level of judging and the main prizes are an overseas trip for the national winner and an around-Australia tour for each state winner.

There are valuable book awards for the school of the national winner.

For further details, contact Kew Lions Club President, Ray Joyce on **860-4444** (BH) and **859-3746** (AH).

1st Kew Scouts need you

Our enthusiastic leaders offer outdoor activities such as camping, canoeing, bushwalking, games, etc and meet every Thursday, 7.30—9.30pm.

Boys aged 11-15 who are interested in becoming scouts should phone Pat Day on **861-6148** for further information.

Melbourne Legacy Widows

The Kew branch of the Melbourne Legacy Widows Club meets every third Wednesday of the month at the RSL Club Rooms in Cotham Road.

We welcome and take interest in all new members and encourage Legacy widows to take part in Club activities.

Contact: Kath Chapple, **859-2346**; Val Blakly, **859-2097**.

Auxiliaries

The Kew Eye and Ear Hospital Ladies' Auxiliary meets every third Monday of the month at 1.30pm in Hall 3 of the Kew Civic Centre, Cotham Road.

New members welcome. Phone **817-4671** or **817-3584**.

The St George's Hospital Kew Ladies' Auxiliary meets the third Wednesday of the month at 10am in the conference room at the hospital. For further enquiries, contact Mrs Reed on **817-4671**. New members welcome.

Commentary

good gardening



Care of indoor plants

As the weather warms up it is a good time to pay some attention to indoor plants. Most people have trouble keeping indoor plants in good condition. The Parks and Gardens Department grows indoor plants for the council offices and for other decorative purposes and we also have difficulty keeping them healthy when they are indoors for any length of time.

The main reasons that indoor plants do not do well is that there is really no such thing as an "indoor" plant. Most plants do not get enough natural light and humidity inside. If you are growing indoor plants I suggest the following hints may be of assistance:

1. Now is a good time to repot indoor plants which have become pot-bound.
2. Indoor plants can be given a spell outside in a sheltered position now that the worst of the cold weather is over.
3. Locate indoor plants where they will receive plenty of natural light although not direct sun as some plants can burn during the summer.
4. To increase humidity it is a good idea to group plants together and occasionally give them a spray with water using an atomizer.
5. Do not over-water indoor plants but keep them moist, not wet.
6. If possible change them over regularly giving them a couple of weeks inside followed by a couple outside.
7. If you propagate your own plants keep new ones coming on regularly to replace older plants.
8. When buying new plants choose the hardiest types.

The indoor plants that we find to be most successful inside are Monsteras, Philodendrons, Aspidistras and Spathiphyllums.

Council meeting times for November

- 11 General Purposes Committee 7.30 pm
18th COUNCIL 8.00pm
25 Standing Committees 7.30pm

Meetings are held in the Committee Rooms at the Municipal Offices and are open to the public.

Streetworks are budget priority 1.

Faced with big cost increases in many areas and a real decline in State Government financial assistance, Kew has given strong emphasis in its 1986/87 budget to a range of street works.

Council has doubled the allocation for the landscape treatment of streets to \$165,000 and funds for footpath replacement have risen from \$39,000 to \$190,000.

Local streets are also the focus of traffic management programs which have been given a boost in the budget.

Studies are planned for Studley Park Ward and traffic control devices are to be introduced to the Parkhill Road/Normanby Road area after recommendations from the local area committee have been considered by Council.

While we believe that improving the amenity of the street environment is an essential part of community planning we will also be proceeding with two major projects, the Library and Recreation Centre.

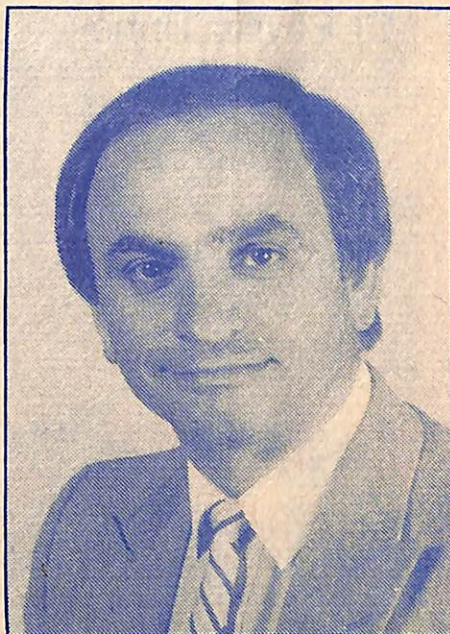
Council was faced with particular difficulties in holding next year's general rate to 8.8%, with higher costs for services being outside Council's direct control.

For example, fire protection costs have risen by 20%, public liability insurance costs have more than doubled and garbage disposal costs have increased by 18%.

Of equal concern has been the failure of State Government contributions to keep pace with inflation. Next year we anticipate that grants from the State for services ranging from libraries to home help will increase by only 2%. This means a greater proportion of costs for these services is being transferred to the municipality.

We appreciate the pressures on the State budget and support the idea of the devolution of the responsibility of human services to the municipal level, but the success of this process is dependent on State and Local Governments developing a longer term and fairer approach to the funding of community services.

Council's Forward Planning team is looking at financial, staff and resource planning at present in order to develop a coherent and manageable program for the future but Local Government should not be forced to fill the gaps left by the gradual withdrawal of the State from areas to which it has had a long-standing financial commitment.



New and new-style services

Our Quality of Services Survey, held late last year, indicated that residents were concerned about the lack of subsidized full day child care in Kew and the nature of the hard rubbish collection.

Council is very pleased that confirmation has been received of joint State and Federal funding for a full day child care centre for Kew.

The centre will be at 3 Belford Road and we anticipate that it will be in operation in the second half of 1987.

During October and November, we are piloting a new hard rubbish collection scheme. Instead of using barriers in the street as we have done in the past, residents will be invited to leave their hard rubbish on the nature strip, from where it will be collected by council workers.

There will be the same restrictions about the type of hard rubbish which will be collected. Please do not leave out waste from industrial premises, builders' rubbish, car bodies, swimming pool chemicals or liquid or offensive waste.

Household rubbish including tins, scrap iron and other metal products, old electrical equipment such as refrigerators and washing machines and timber will be collected, as will prunings tied in bundles not more than 1.5 metres in length.

At least a week's notice will be given prior to collection and we are confident that this new system will be more convenient for residents.

Cr Joe Orlando
Mayor of Kew

Profile

Cr Phyllis Tinney

"I'm very optimistic about the ability of Local Government to meet people's needs," Cr Phyllis Tinney stated emphatically.

Her words are based on the experience of being a College Ward Councillor for four years and also of being a resident lobbying Council prior to her election.

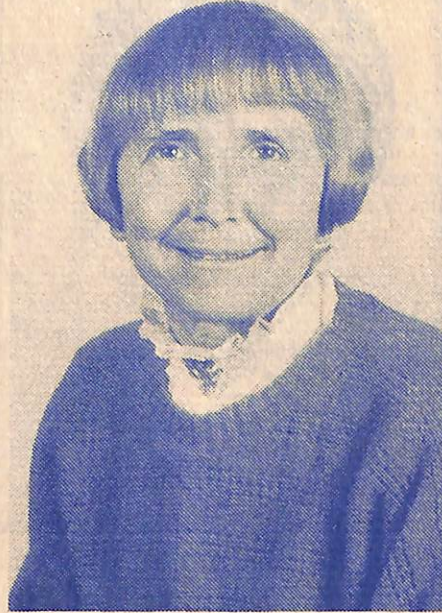
"Local Government has changed a great deal over the last few years, since it has become increasingly oriented to the provision of human services.

"It is no longer dominated by developers and businessmen — people are becoming councillors because they want to give something back to their community," she said.

Phyllis Tinney sees Local Government being the ideal provider of human services because it is so accessible to residents.

"In the last four years since committee meetings have been open to the public, Council has become far more responsive to residents. This is partly because there has been considerable community input and partly because Councillors are seen to be accountable".

Phyllis Tinney nominated for Council because she felt the need for more communication between the community and Councillors. She also wanted to see the range of family and children's services extended. To this end, she was involved in the establishment of the Children's Services Consultative Committee, the Community House, the Occasional Care Centre and more recently, the Kew Full Day Care group. She is also actively involved in the Kew Community Action



Group and the Family Day Care Committee.

She has had considerable experience with children's services. Originally a nurse, she completed an Arts degree majoring in Sociology and went straight into researching children's services for various councils and voluntary agencies. She is just completing a project on "Community Houses in the Inner Eastern Region" for the Regional Consultative Committee.

Cr Tinney finds that her interests, her job

and her involvement in Council are all complementary and that her feeling of belonging to the Kew community has been consolidated by becoming a Councillor.

"It is very rewarding both in terms of meeting people, in getting to know my ward thoroughly and also in knowing that I have been instrumental in the development of children's services in Kew," she said.

Phyllis Tinney loves Kew. She has lived here for 25 years and finds its residential character and diverse population very congenial. She has always been strongly opposed to the development of the Junction and the intrusion of schools into residential streets, both of which she sees as threats to this residential amenity.

Cr Tinney sees great potential for co-operation between councils in the provision of services. For example, she believes our residents should have easy access to a heated pool but that it need not be in Kew.

Not surprisingly, she has little time for recreation. On the weekends she runs a shop, "The Cottage", in Queenscliff, which sells old wares and cottage plants. This ties in two of her hobbies, restoring furniture and gardening.

She has four sons aged between 25 and 30, two of whom live at home. Her husband Fred is a retired barrister and three of their sons are also lawyers. All have given her support in her Council work.

Life is certainly busy, but Phyllis Tinney still finds time each morning to jog around the Alexandra Gardens, located conveniently just across the road!

Kew's Community Bus

The Community Bus, a 15-seater Toyota Mini Bus, is an important part of the comprehensive range of domiciliary services available to Kew residents.

The bus provides transport to Day Centres, Community Groups, the Senior Citizens' Centre and takes passengers to the supermarket, library, Kew Junction shops, banks and the Post Office.

The service is available to elderly residents who have difficulty using public transport for reasons of frailness or inaccessibility and for whom alternate transport is not available.

The Community Bus Co-ordinator is Mrs Joy Thomas. She drives on Monday, Wednesday and Friday. On Tuesday and Thursday, the bus is driven by volunteers. All drivers are accompanied by volunteer



jockeys who assist passengers to enter and alight and reach their destinations safely.

Passengers are picked up and returned to their homes.

More Jockeys needed

Jockeys are urgently needed every second Monday and Wednesday from 1.30pm—4pm, and the third and fourth Thursday of the month from 9.30am to 11am and from 1.30pm to 4pm.

If you would like to help keep this valuable service on the road by giving a little of your time, please contact Joy Thomas or Donna Morton on 862-2466.

Pollarding postponed

Street Committee meetings to discuss the pollarding of plane trees in Molesworth, Malmsbury and Mary Streets, Willsmere Road and Highbury Grove, have been postponed until next year as it is now too late in the year for pruning.

Residents will be advised of meeting times prior to winter pruning next year.

Kew's foster child

Did you know the City of Kew is a foster parent?

Since 1976 Council has sponsored Gaoussou Simpara, from Mali, West Africa, as part of the Foster Parent PLAN.

Gaoussou lives in the village of Banamba with his family. His father is a farmer and none of the family have attended school.

Mali has been affected by the terrible droughts in Africa, so the family's economic situation is grim indeed.

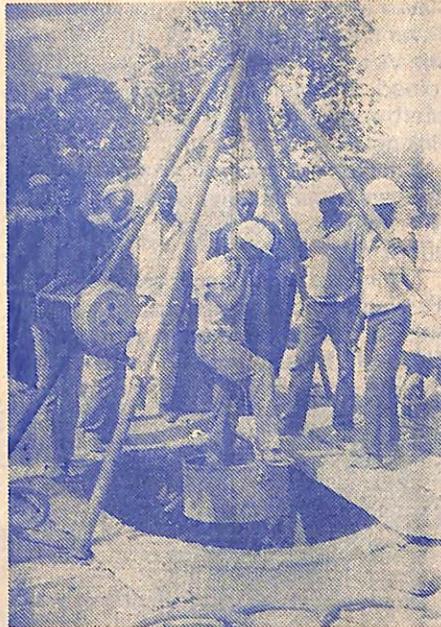
The foster child is chosen as a representative of the family to give a focus to the personal relationship between the family and its sponsor.

The assistance goes to the entire family in the form of monthly cash payments, food supplements, household items, counselling, medical and dental care and health education.

Through Community Development Assistance, PLAN helps people to set up and operate projects such as co-operatives, village industries, mini-banks, community centres, leadership training programs, housing improvements, road making, bridge building and the provision of toilets.

In Mali the sinking of wells is a high priority. Aid for these and other projects is distributed by PLAN's Assistant Director in the region.

Kew receives regular correspondence from the family. In July, 1985, we learnt that Gaoussou was now an apprentice repairer of bicycles and motor bikes and also



Sinking a well in Mali.

helped out in the fields.

The most recent letter, of May this year, said that Gaoussou had gone to the capital, Bamako, to look for a part-time job to earn some money as his father was missing.

The national headquarters of Foster Parent PLAN, a non-profit, non-sectarian, non-political international aid agency, is at 2 Highbury Grove, Kew. For further information about their work, contact Helen Teichmann, Public Affairs Manager, on 862-1077.



by Krista Bell

The Children's Services Consultative Committee heartily congratulates the members of the **Kew Full Day Care Centre Committee** whose two years of relentless hard work have achieved the impossible! The Federal Government Office of Child Care has confirmed funding to the tune of \$229,000, and Kew's long overdue Full Day Care Centre is to be built at 3 Belford Road. Well done ladies!

Kew Council has accepted responsibility for building the Centre within the allocated budget amount, with completion date being prior to September 1987. So, it's really on! It's great to see Council and the community

Children's services update

working together to achieve one of the most important services demanded by parents in Kew.

The Management Committee of the Kew Full Day Care Centre will take a leading role in the design and building of the Centre. Once it's ready for occupation the running of the Centre will be handed over to the Committee, although Council will retain ownership of the site, the building and the equipment purchased with the initial Federal Government grant.

The Kew Full Day Care Centre Management Committee is a community group which would welcome new members to help in planning the proposed Centre. If you would like to join the Committee, or to donate toys or equipment, or have some clever fund raising ideas, please phone Yvette Pozanski on 818-1089. Don't forget that this is the Centre you asked for, so let's make sure it's the best! To place your child's name on the waiting list for the Centre just phone Sue Hill on 862-1724.

Adviser for Premier Youth Theatre

Kew's **Premier Youth Theatre** group has recently appointed Ms Loretta Smith to act as adviser.

The group is administered by young people and Ms Smith will have a participatory rather than directive role.

She has had considerable experience in theatre as drama teacher, founding member of the "Instant Theatre" group and as an actress. Currently, she is Development Officer for the 1986 Caulfield Festival.

Premier Youth Theatre is holding workshops regularly aimed towards a production in February, 1987.

Any person in Kew aged between 12 and 25 is eligible and welcome to join the group. If you are interested, contact the Youth Services Development Officer on 861-6828.



Get fit for summer

Council runs a **Community Recreation Program** on Monday mornings between 9am and 10.30am in Hall 3 of the Civic Centre.

You can participate in gentle aerobic exercises to music in a friendly and supportive atmosphere.

The aerobics is followed by relaxation exercises — just the thing to start the day!

If you would like to join the group, just come along on a Monday or contact Recreation Co-ordinator, Carolyn Graham, on 862-2466.



The Kew Festival Committee has announced dates for the 1987 Festival.

The Festival will run from Saturday 14th March until Sunday 22nd March, 1987. A Fun Day will again be held on the opening day of the festival in the Alexandra Gardens.

Anyone interested in holding Arts and Craft stalls in the gardens is asked to write to Anne Riseborough, C/- Municipal Offices, Charles Street, Kew.

Kew's champion rower

Michael McKay, 22, has returned victorious from the World Championship Rowing Competition in Nottingham.

The **Australian Men's Rowing Team**, five of whom are Victorians, won the men's heavyweight coxed 8 by the largest margin in 40 years.

They beat teams from the USSR, USA, Italy, East and West Germany and are the first Australian team to win.

The team also struck gold at the Lucerne International Regatta and the Commonwealth Games.

This hat-trick is remarkable not only because of the youth of the team (most are 21-22 and the peak age for rowing is 26-27) but because of the lack of support they receive from government and the media.

"We were very disappointed at the poor media coverage of the events. All the money and attention goes to track and field, an area where we don't rate internationally," he said.

To participate in these events, the team had to pay their own fares and relied heavily on sponsorship from Cadbury Schweppes. They are being given \$300,000 over the next three years.

Michael's rowing career started at

Xavier where he captained the Head of the River crews in '81 and '82. He went on to win Victorian youth competitions and then joined the Mercantile Rowing Club in Melbourne (they are sponsored by Pilkington ACI).

It is the excitement of racing which appeals to Michael and which makes the two training sessions a day worth the effort.

"There is a year-round training program. It's a large time commitment and work and studies have to be fitted in some how or deferred," he said.



Michael McKay (second from right) and team mates.

DO CARE looking for volunteer visitors

Several lonely, older people in Kew are hoping to make a special new friend through **DO CARE**, but volunteers prepared to visit one older person for

about an hour each week are needed.

DO CARE, a program of Wesley Central Mission, establishes friendships between lonely older people and volunteer visitors throughout Melbourne. Through these friendships, **DO CARE** helps many older people to continue leading independent lives at home, rather than going into some kind of institution.

"**DO CARE** gives each volunteer the chance to make one special friend," says the area co-ordinator for Kew, Mrs Barbara

Moran. "We have about 13 friendships established in our area already," she explains, "but without more volunteers I can do nothing for the older people who are waiting for a friend. For example, we have a British ex-serviceman who would be very pleased to make the acquaintance of a person with similar experience".

Barbara Moran says that **DO CARE** gives training and encouragement to every person who volunteers. "We ask each volunteer to come to two two-hour training programs where they learn about **DO CARE**, and about some of the concerns and interests older people may have. After the training, we try to match an older person and a volunteer who live close and who we believe will enjoy each other's company".

After that, the co-ordinator keeps in touch with both friends, and is always available to answer questions or to give encouragement. The volunteer visits just

"We know **DO CARE** changes lives," says director of the **DO CARE** program, Mrs Marion Champion. "It's not just the older person who benefits. We hear many stories from volunteers whose lives are better because of **DO CARE**".

Someone wants to be your friend.

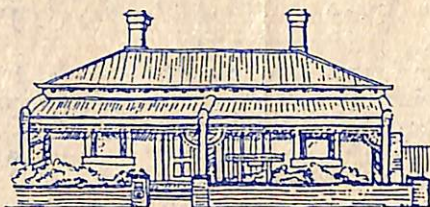
To volunteer please ring **DO CARE** on **662-2044** between 9 and 5 weekdays.



Mrs Linda Jays (left) with friend, Joan Gibson.

KEW COMMUNITY HOUSE

Co-Ordinator: Rhonda McCaw



6 DERBY STREET, KEW, VIC. 3101
Telephone: 862 3126

Volunteers needed

Are you interested in people? Do you enjoy discussion groups (including talks on local issues), walking, scrabble, cards, craft activities or just sharing your thoughts and ideas with others?

The Community House is planning to expand its services to include an unstructured drop-in day on Wednesdays starting in 1987. To help it function effectively, a group of 6 or more interested people is needed to organize activities, provide company and a friendly atmosphere for this special day.

It is envisaged that the House would open late morning and stay open later than 3pm but the details would be decided by the group.

This group would be responsible to the Kew Community House committee and work closely with it. A number of people have already expressed interest in this new venture, so if this sort of activity appeals to you, please contact Rhonda at the House.

The first meeting of the Wednesday group will be on Wednesday, November 12th at 10am—11.30am. This meeting will

discuss the aims of the group and details of its operation.

November classes

Vacancies still exist in the following classes: Community Walk — Kew Billabong (Mon) November 17th (1 week) 1.00pm sharp. Malaysian Cooking (Mon) November 10th (3 weeks) 9.30—11.30. Christmas Bonbons (Tues) November 18th (1 week) 9.30—11.30. Crafty Christmas Gift Ideas (Thurs) November 6th (3 weeks) 9.30—11.30. Meeting Procedure (Thurs) November 27th (2 weeks) 9.30—11.15.

Our garden

Are you frustrated with a small garden or do you live in a flat and have no access to a garden?

The Community House has a garden which needs adopting by someone with a green thumb. The herb garden suffered greatly when the new toilet was put in and there is plenty of potential for improvement. Maybe a few summer vegetables? Ideas would be received with thanks. We can provide basic gardening tools.

What's what in the playground

The Kew Playground Committee has been hard at work documenting the types of play equipment in Kew parks so that parents can choose a playground which will suit their children's needs.

Alexandra Gardens: 1 x 4 seater spring see-saw, 2 climbing frames, 2 BBQs, fenced pond, drinking fountain, seats.

Reservoir Reserve, Grange Road: 2 x 2 swings, 2 see-saws, 1 spinner, 1 large wooden climbing frame/slide, drinking fountain, seats, 1 BBQ, 1 oval.

Victoria Park, cnr Adeney Avenue and Parkhill Road: 2 swings, 1 slide, 2 see-saws, 1 monkey bar, 1 BBQ, 1 shelter, seats, 2 ovals.

Victoria Park, cnr Adeney Avenue and High Street: 2 horse swings, 1 covered slide, 1 climbing frame and slide, 1 mound, 1 bear see-saw, 1 climbing frame, 1 shelter, 2 BBQs, drinking fountain.

For more information about the Playground Committee, contact Belinda Sims on **861-8158**.

Band news

The band and the entertainment unit "Boots and Brass" have been kept busy with engagements, playing at the Melbourne Town Hall for the "3MP Blitz Ball", the Ballarat Football League grand final and the Anti-Cancer concert in the Melbourne concert hall.

The band is now preparing for the end of year concert on November 22nd at Dallas Brooks Hall.

A fond farewell to Rev. George Grant

After ten years as minister at the East Kew Uniting Church, the Rev. George Grant has accepted the position of Chaplain at Penleigh Girls' School in Essendon.

George Grant has been 22 years in the ministry and is looking forward to the challenge of his new career in the classroom, not to mention "stopping at 4 o'clock!" He is not new to teaching, having taken religious instruction at East Kew Primary School for the last 8 years.

In talking with him, one cannot help but be inspired by his faith in people and their potential to learn and grow. He has a strong commitment to humanity which led to his commitment to Christianity in his mid-twenties.

"I like people," he said simply, and this is a chief motivating force.

Mr Grant has been very active in both church and Kew communities. The

inception of **Kewriosity** was primarily a result of his vision.



"I wanted to build up a sense of identity in Kew and encourage communication between groups and individuals," he said. He considers the free flow of information as basic for a healthy, democratic community.

"Life is about being human, being part of a whole," he said, adding that the more people communicated, the more a feeling of belonging would be reinforced.

Apart from leaving his parish, George Grant will also be leaving the Kew High Chaplaincy Committee (he instigated the successful move to have a chaplain at K.H.S.); Rotary, where he initiated the Senior Citizens' Christmas party and the Kew Ministers' Fraternal. It was his idea to have this group deliver Council's New Residents' Kit personally to those recently arrived in Kew, thus creating new bonds within the community.

Speaking with characteristic enthusiasm, he said, "I believe in making the most of every opportunity — I am always optimistic".

Kew will miss George Grant's energy. He has made a very positive contribution to Church, Council and the community in general. **Kewriosity** wishes him all the best for the future.

Citizen advocacy: a new way to protect the rights of people with disabilities in our community

Citizen Advocacy is a new term to most people in Victoria but one which we expect to become widely known as there is a program underway right here in the Inner East region.

The aims of the program are to assist people with intellectual disabilities to participate in the community, and to open up opportunities for companionship and warmth between disabled and non-disabled people.

This is done by building one-to-one personal relationships between adults with intellectual disabilities and volunteers (citizen advocates) from the community. Advocates are people who choose to share some of their time, as friends, with people with intellectual disabilities and who, at times, would speak out to ensure their friends' rights are being met.

Staff of the Citizen Advocacy office (located at 9 Prospect Street, Box Hill)

Footy news

The Kew Football Club was pleased to see one of her favourite sons in **Robert DiPierdomenico** win the **1986 Brownlow Medal**. During 1974 Bertie figured prominently with Kew in the Amateur competition culminating in a Most Promising Trophy after graduating from the Kew U15 team.

To add to the Brownlow, Bertie has the distinction of having been selected in a "Best Ever Amateur-VFL" team along with his Kew coach and former club and State captain/coach John Fisher. Both these former Kew greats can now mix it with other Amateur-VFL greats in Phonse Kyne, Denis Cordner, Alan La Fontaine, Geoff Southby, Ian Law, Gary Dempsey, etc.

A touch of nostalgia attached to Bertie's win in that the only other time a Hawthorn player has finished at the top of Brownlow voting was in 1949 when another former Kew player, Colin Austen tied with Ron Clegg (S.M.). Unfortunately Colin lost the medal on a countback.

Club contact: Mick Bollman **818-6536 (H), 63-0481 (W)**.

recruit advocates, who participate in an orientation program, and are then matched with a person and supported continually in that relationship.

Currently, the program has 35 matched couples, some of whom have been together since 1981. However, there are about 50 people still wanting advocates, several of whom live in Kew.

Being an advocate would involve

spending time regularly with a person, going out and having fun. It may also include helping to solve problems, and assisting in practical ways. It is a great way to become involved in the community.

The Inner East Program is looking for people to become advocates now. If you would like further information, please contact the Regional Co-ordinator, Leonie Davey, on **898-8071**.



Keeping you informed



A glance at the Real Estate pages of your newspapers demonstrates how many homes change hands every week. Many of these sales will bring newcomers to the district, possibly from distant parts, who are unfamiliar with the services and amenities available in their new neighbourhood.

A visit to the Citizens Advice Bureau will give them the chance to meet a friendly and well-informed volunteer who can supply details of the local organisations devoted to almost every human interest and activity. Whether it be craft work or sport, social clubs or welfare services, churches or schools, it will be listed in the Bureau.

The Citizens Advice Bureau is located at the rear of the City Hall, opposite the Library, and is open from 10am to 3pm Monday to Friday; or call us on 861-5244.

Deadline

Kewriosity is produced and edited by Susan Schwartz, Information Officer for the City of Kew, and a community based Editorial Committee. Copy for the December/January issue should reach the Municipal Offices in Charles Street, by **NOVEMBER 3RD**.

Kew Nursing Mothers

The Nursing Mothers' Association of Australia is a self-help group with the aim of helping mothers to breastfeed, as 9 out of 10 wish to do. NMAA has over 550 local groups of members who meet together to share their experiences and to support each other.



Each group has discussion meetings, counselling and other gatherings where mothers can gain confidence and learn about breastfeeding as part of skilled and loving mothering. It is a friendly way to meet other people when a woman has small children or when she moves into a new area to live.

The Kew group of the Nursing Mothers' Association of Australia is led by trained Breastfeeding Counsellor Kay Noske. Members can be assured of the best breastfeeding help in Australia as all NMAA Breastfeeding Counsellors have completed an extensive training course. Visitors are welcome to attend meetings and details can be obtained by phoning Kay Noske on **817-5721** or Lorraine Graham on **859-8065**.