

# KEWRIOSITY

Municipal Offices,  
Charles St., Kew, 3101

July 1986

## Folk Dance Festival in jeopardy?



*The folk dancers in action*

The future of the very successful Kew Folk Dance Festival held last month in Kew Civic Centre, is looking decidedly shaky.

The Festival, which brings together 16 state, private and special schools in Kew, has become a focal point since its inception four years ago. The event involves a massive organizational process.

Co-ordinated by Community Education Officer, Nancy Nankervis, the Community Education Committee (CEAC) and Education Department consultants, the Festival is considered to be of particular value. It promotes communication and co-operation between staff and students and is a wonderful learning experience for the children from grades 3-6 who participate.

Nancy is particularly pleased with the way children from St Paul's School for the Visually Impaired and Glendonald School for the Deaf have been involved. A special dance, **Galopede** was arranged for children with disabilities. Kew Cottages Special School has expressed its enthusiasm to be involved next year.

Nancy Nankervis spoke about the question mark hanging over the 1987 Festival. "The funding for my position finishes this year, the future of CEAC is in doubt and with the relocation of Kew Library to the Civic Centre, we will be without a venue in Kew," she said.

CEAC is meeting to discuss options for the future. Ideas and enquiries should be referred to Nancy Nankervis, on 859 8368.

**Our restructure options P. 3**

## NO BURNING

**on Sundays or Mondays**

On other days burning is permitted in a properly constructed incinerator between 8.00am and 6.00pm. By-laws prohibit burning leaves in the gutter. Give your garden a treat and mulch or compost leaves. Don't burn our natural resources!

## **Rec Centre on hold — Library plans to be finalised**

The time line for two major items in Kew's Capital Plan is under review as a result of decisions made at Council's June meeting.

At this meeting, Council determined to stop expenditure on the Recreation Centre for the time being. They felt that in view of the current deficiency of available funds and the impending restructure of local government, planning for the Recreation Centre should be recommenced in September.

Plans for the relocation of Kew Library to the City Hall are to be finalised but the building works will not commence until funds from the sale of land in Walpole Street become available later in the year.

## **inside**

Dates and notices 2  
Council update 3-5  
Councillor profile 4-5  
Community news 5-8  
Bill Stent's ramblings 7

# Dates for July

**2 Kew Peace Project Seminar Series** at Kew Civic Centre, at 8.00pm, entitled *People and the Bomb*. The aim will be to help those attending gain a greater understanding of nuclear issues and to develop strategies for positive action. There will be six seminars in the series, on consecutive Wednesdays and subjects include *The Bomb as Peacemaker*, *Living with the Bomb*, *Religion and the Bomb* and *Beyond the Bomb*. A variety of speakers will lead discussion. All welcome.

**4 Save the Children Fund** monthly fundraising meeting, Hall 3, Kew Civic Centre. Speaker: Father Brosnan. Morning tea at 10.00am, \$1 donation and sales table. All welcome.

**5 Kew Football Club:** Seniors 2pm, Reserves 11.45am v. M.H.S.O.B. at Victoria Park.

**8 Asthma Foundation Community Education Sessions** 2.00 or 7.30pm at the Asthma Advisory and Education Centre, 2 Highfield Grove. For further information, contact the Foundation on 861 5666.

**9 Hyde Park Fellowship**, 2.00pm. A journey to Hong Kong and China through slides.  
**Kew Historical Society**, 8pm, Manchester Unity Hall, Union Street, Kew. Speaker: Mrs Helen Fuller, art consultant and voluntary guide at the National Gallery of Victoria. She will show slides of gallery works dating from 1850-1950, with reference to some artists who lived in Kew. For further details, ring Sue Leong on 817 4660.

**10 Kew Garden Club** Annual General Meeting, 8pm Senior Citizens' Centre. *Show and tell* — bring something of interest.

**12 Kew Football Club:** Club XVIII v. Bloods at Victoria Park, 11.50am.

**19 Kew Football Club:** Club XVIII. Old Haileybury at Victoria Park, 11.50am.

**21 Community Walk**, 1pm sharp. Follow the Outer Circle Railway. Register at the Community House, 6 Derby Street or phone 862 3126.

**24 Probus Club** of Kew Annual General Meeting, 10am in the RSL Clubrooms.  
**Kew Arthritis Self Help Group**, 10.30am at the Senior Citizens' Centre. Speaker from the Marie France Studio and Gallery, on silk and fabric workshop. Visitors most welcome. Contact 862 2021 or 818 4644.

**26 Midwinter Fair**, 10am to 2pm at St Hilary's Church in John Street. Auction of goods at 12 noon.

**28 Daytime Garden Club**, Senior Citizens' Centre, promptly at 1.30pm. Speaker: Mrs Yvonne Knight and *Show and Tell* by members. Enquiries, 859 2977.

## notices

### Midwinter Fair at St Hilary's

Over the past 6 months, St Hilary's Church in John Street has been extending its buildings. We are very excited about the additional opportunities this gives us to serve the community we belong to in Kew, and in celebration we want to invite all our neighbours to our annual Midwinter Fair on Saturday July 26 from 10 till 2, to see what we've been doing and to join in the fun we'll have for all the family with our well-stocked stalls, children's activities and car wash. Proceeds will support the church's work in the community, and further information is available from St Hilary's office, Tel. 817 4513.

### Kew Peace Project

There will be a public meeting at the Kew High School Community Theatre at 8pm on Sunday, June 29th. Speakers include Professor Max Charlesworth and Sister Margaret Hill, on nuclear issues.

If you would like further information on the Kew Peace Project, ring 818 1245 or write to the project, P.O. Box 5000, Kew.

### St George's Auxilliary

The St George's Hospital Kew Ladies' Auxilliary has 42 very active, enthusiastic members. They are rostered for the amenities trolley which visits the wards twice a week and for the trading table which is to be found in the hospital foyer every Wednesday afternoon between 2 and 4pm.

Two very important fund raising functions are the St George's Day Dinner in April and the Luncheon at Chaucer's in October. Several enjoyable smaller functions are held during the year as well as at least two cake stalls in the foyer.

The monthly meetings are held the third Wednesday in every month (except December and January) at 10am in the Conference Room at the hospital. New members are warmly welcomed.

### Please, please!

Handwritten notices and articles should not be written entirely in capital letters, as this makes difficulties for the printers.

If you do not have access to a typewriter, please use print script with capitals only where necessary.

# Commentary

## Local Government Restructure: Options and Issues for Kew

A paper looking at Kew Council's options in the face of the State Government's proposal to restructure Local Government has recently been released by Council.

Kew is targeted for restructure because our population falls below the minimum 40,000 stipulated in the Local Government Commission's (LGC) "Principles and Programme Report" and our rate revenue is also less than the 1984 minimum of \$6m.

Local Government owes its existence to State legislation, having at present no place in the Australian Constitution. It is therefore within the State's power to alter the role and structure of Local Government. Council's paper details the approach Kew has taken to the restructure challenge.

Council has commissioned quality of service and economic viability surveys, prepared profiles of the preferred options and held joint discussions with Hawthorn about opportunities for co-operation over a considerable period. Council will be making a submission to the LGC when hearings commence in August. Our submission should take into account the views put to Council by people and groups in our community.

In the process of outlining the goals, principles and objectives of restructure, Council's paper is critical of the generalised set of principles the LGC has put forward which have neither been critically assessed nor analytically applied to individual Councils.

Restructure goals, principles and objectives which Kew has developed are community oriented, in contrast to the primarily economic and geographic criteria applied by the LGC.

The pros and cons of possible changes are discussed at length in Council's paper, with the preferred option being the maintenance of the status quo.

Kew is opting for the status quo, not only for economic and service quality reasons, but because Council has established a tradition of close contact with its community. We put a very high value on the accessibility of our councillors and our processes of community consultation. We feel that this is what Local Government should be about.

Kew has other priorities which are not uniformly shared by neighbouring councils. Our environmental standards are very high and we emphasise the importance of human services. The surveys mentioned earlier have given weight to the contention that residents are not dissatisfied with the range and quality of service that Council provides and that Kew is economically viable.

Other possible changes include amalgamation with Hawthorn. This would give a combined population of 61,200 and a rate revenue of \$13m and would alter the demographic mix.

There are a number of service quality and cost dimensions which differ sharply between the two municipalities, particularly concerning environmental issues.

An amalgamation of Kew with Balwyn, ie. the northern part of the Camberwell municipality is another possibility. This would create a municipality of 65,000, using the existing eastern boundary of Camberwell and Mont Albert Road as the southern boundary. There would be little or no change in the demographic mix and rate revenue would increase to approximately \$11.5m. There are no clear gains in the restructure of Kew with Balwyn and various LGC principles would be contravened in such a merger.

An amalgamation of Kew, Hawthorn and Camberwell is an option rejected outright by Kew Council. With a population of 151,300 and rate revenue of \$28.6m, this would be the largest municipality in Victoria. There would be little to be gained and much to be lost by such a move.

It is difficult to determine the effects on the rating system resulting from an amalgamation of this scale, but Camberwell's economic priorities are different from Kew's. It is clear that the combined Council's relationship with the community would alter dramatically.

The LGC's Options paper for the Eastern segment of metropolitan Melbourne was released in June. The paper discusses restructure options for Councils in the wedge from Kew and Hawthorn in the east to Sherbrooke and Lillydale in the west.

In Option A, Kew and Hawthorn are amalgamated to form a new municipality tentatively called East Yarra. Options B and C are substantially the same for Kew, proposing an amalgamation of Kew with Hawthorn and Camberwell to form the new City of Burke. The only differences between these two options are minor boundary changes.

The LGC paper is also available in the library.

The restructure proposals have long term implications for the people of Kew and we have to decide what we value about living in a small municipality with a high level of service provision and Councillor representation. We must also recognise the Government's determination to press ahead with Local Government restructure.

Cont. P5



## Traffic Management

### Works to commence in Area 5

(Area bounded by Princess, Earl, Asquith and High Streets)

Work is to be commenced shortly on the implementation of the traffic management scheme in Area 5.

This scheme, which was adopted by Council in September 1985, following an extensive period of public consultation, is to improve the amenity of this area by discouraging non-local traffic from passing through the area and by controlling vehicle speed and turning paths at a number of locations.

The scheme is to be implemented as a mixture of permanent and temporary works and is to be reviewed after a minimum trial period of six months.

The works are to be carried out by Koscan Constructions Pty Ltd, under a contract with Council. It is expected that the construction of the scheme for the trial period will be completed by October.

Further details on the scheme can be obtained from Council's Traffic Engineer on 862 2466.

## Grant for apprenticeship scheme

Council has decided to allocate \$2,000 to the Inner Eastern Group Training Inc. This scheme, initiated by the Association of Inner Eastern Councils aims to create employment and increase the number and range of apprenticeship opportunities in the region.

Kew is represented on the committee which manages the scheme by Cr Jim Tutt.

## Focus on Children

A consultation on children's services in Kew, involving 3 public meetings and the distribution of a questionnaire, has been completed.

Kew's "Focus on Children" committee, comprising community representatives, community based children's services groups, Councillors and council officers, was very pleased with the degree of interest shown in the project.

The principal issues arising from the consultative process, concern the need for child care centres, for a greater flexibility in children's services provisions, more accessible and current information about children's services and the need for greater co-ordination and integration of children's services.

Results of the questionnaire and the final report are available from all

## IN BRIEF

questionnaire distribution points, the Kew Library and the Municipal Offices. For further information, contact the Children's Services Officer, Elizabeth Sullivan on 862 2466.

## Kinder enrolments

Modifications to Council's Kindergarten Enrolment and Policy procedures have been proposed and are under consideration.

When released, the new policy will be available from all points where the Standard Application forms are distributed.

## Relieve for Gatehouse

The Gatehouse Day Centre for the ambulant and confused elderly in Kew, Hawthorn and Camberwell has been granted \$25,497 under the Health Department's Home and Community Care Program.

The funding is for this year, commencing from January 1st and so the continuation of the centre is assured for the immediate future at least.

## Aesthetics advisory panel

From a distinguished group of respondents to Council's proposal for

the formation of an Aesthetics Advisory Panel, eight panellists have been appointed.

They are town planners, Mr Ken Duxbury and Mr Keith Lodge; landscape architects, Mr Robert Gurney and Ms Ashley Russell; architect historian, Mr Stuart Warmington; local artist, Mr Donald Cameron; and architects, Ms Dianne Routt and Mr Peter Brown.

All panellists have had extensive professional experience in their fields and either live or have lived in Kew.

They have volunteered their services for a period of 12 months.

## New City Building Surveyor

Greg Payne, former Deputy Building Surveyor, has taken over the position of City Building Surveyor, with the departure of Andy Anderson who has been appointed Technical Services Manager with the Housing Industries Association.

Greg has been at Kew for two years and is looking forward to the challenges offered in his new job.

## New building regulations

Certain amendments to the Victorian Building Regulations became official on the first of May. They concern detached outbuildings, fences, poles and antennae; signs, retaining walls, swimming pools and garages. For details of the new regulations, contact the Building Surveyor, on 862 2466.

# Profile

## Cr Moira Jeffreys

Moira Jeffreys is completing her first year as Councillor for Prospect Ward this month. A Kew resident for 20 years, she had no long standing ambition to enter local government. When she was asked to fill the position created by Kaye Cole's retirement, she had "some long walks and a good think" before deciding to accept.

Her experience as a founding member of Kew People for Nuclear Disarmament and her work in the Peace Movement generally, taught her that the "ordinary" person, with commitment and hard work, can achieve at least as much as a specialist in a particular area. She believes this gave her the confidence to become a councillor.

There was no particular issue that dominated her thinking in taking on the role and she sees this as a distinct advantage. She likes to maintain an independent position.

"When considering issues, I try to assess both the immediate and long term effects on the wider community as well as on those in the locality. Issues are often complex and a case can be argued or justified for each side. I believe it is essential to have as much consultation as possible with and between all concerned parties to assist decision making and acceptance."

Being a Councillor has made Moira Jeffreys very aware of the limitations on decision making — things such as budgetary constraints, the availability of time and personnel and compliance with planning schemes. She would like people to be more aware of the process of decision making and the resources at the disposal of local

government so that their expectations are realistic.

"I encourage people to come to Council and committee meetings, not only when they are personally involved with an issue, but just to see the way local government works."

She is a strong supporter of the community consultative process and abhors the increasing tendency to use harassment as a tactic, as advocated by the Goulburn Group in the restructure debate.

Her combination of independent and realistic thinking is clear in her attitude to two of the important issues of the moment.

She regards the Recreation Centre as a "very good idea" but considers it to be a big project for a small municipality.

Cont. P.5

## Profile cont.

"The Recreation Centre has great potential — it could become a real focus for community activity, with the Community House and the Youth Centre there as well. I wouldn't want to see the project abandoned but it all comes down to finding the money."

Cr Jeffreys is very much in favour of the restructuring of municipalities in Victoria and believes it will have the effect of strengthening local government overall.

"I would like to see an amalgamation of Kew and Hawthorn. This would broaden our rate base and enable the provision of better services and more specialist staff to meet the ever increasing demands on local government."

Like all Councillors, Moira Jeffreys is involved in a number of committees. She particularly enjoys the "people oriented" committees, like Senior Citizens, Hamer Court and the Community House. She also finds her participation in the Municipal Association of Victoria very interesting, given its critical situation and the many changes occurring in local government.

Cr Jeffreys has three children — Maria 19, Gregor 16 and Nadia 14. She is a nurse by profession but now works part time in the family accountancy practice with her husband Bill. One has the distinct impression after talking to Moira, that life is a series of challenges to be met — and enjoyed.



Cr Moira Jeffreys

## good gardening

The Council Parks and Gardens department is involved with new and replacement street tree planting as well as park and garden planting, now and during the coming months. To assist you in your garden planting we offer the following tips:

1. Know your soil type, the position and climate where you want to plant, so you can choose the right plant for the site.
2. Choose a healthy, well-developed, disease-free plant.
3. Do not plant while the plant is in full flower or fruit; wait till later for planting.
4. If the soil is dry, water it well the day before planting.
5. The soil in the plant container should also be moist at planting time.
6. Prepare a hole for the plant twice the size of the root-ball. Dig thoroughly to break up large clods and produce finer textured soil. Mix some well-rotted compost or blood and bone with the soil.
7. Remove the plant from the container gently and loosen the root-ball.
8. Plant the tree or shrub at the same depth it was previously growing, not too deep or too shallow.



9. Firm down the soil and water well.

Happy gardening!

**Peter Davies**  
Superintendent of  
Parks and Gardens

### Council meeting times for July

1 COUNCIL 8.00pm

15 Standing Committees 7.30pm

22 General Purposes Committee 7.30pm

29 COUNCIL 8.00pm  
Meetings are held in the Committee Rooms at the Municipal Offices in Charles Street and are open to the public.

## Changes to Occasional Care

Permanent part time care, increased flexibility in user hours per week, times and places allocated for the 0-12 month olds, and opening over the school holidays are some of the ideas being considered in a review of the Occasional Care Centre.

The centre, situated in Strathalbyn Street behind the Infant Welfare Centre, was opened last year to support families with the care of their pre-school children. The current review of its functions, prompted by the community consultation, "Focus of Children" aims to make the Occasional Care Centre as responsive as possible to the needs of Kew residents.

Issues such as relief for economically disadvantaged families and the enclosure of the nursery area are also being investigated.

The Occasional Care Centre is co-ordinated by Margaret Farnfield, a trained nurse, with the help of Dale Black, a pre-school mothercraft nurse and two assistants, Louise Fleming and Idranee Ginansekaram. It is open between 8.30am and 4.30pm. For further details, contact the centre on 859 6459 or pick up a brochure at the Municipal Offices.

## Restructure cont.

Council's options paper is being widely circulated in the community. If you would like a copy, phone the City Offices on 862 2466 or contact one of your Councillors for further information.

Written comments should be sent to the Chief Executive, Free Post Box 6, Post Office, Kew, 3101, before July 15 or you can write directly to the Local Government Commission, 17th Floor, 480 Collins Street, Melbourne, 3000.

## Lost

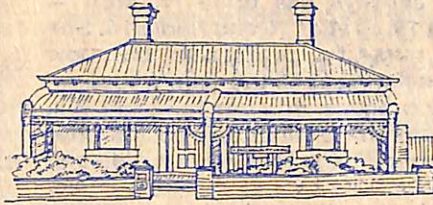
On April 20th, a card with a badge of the Woodbury Ladies' College attached to it, was lost in Highbury Grove, near the Parade Ground.

Would the finder please return it to the Rev. Aubrey Quick, 4 Highbury Grove, or to the Rev. N.M. Pritchard, 181 Cotham Rd.

Woodbury Ladies' College was one of Kew's early schools and the badge is to be kept in the archives of the Kew Historical Society.

# KEW COMMUNITY HOUSE

Co-Ordinator: Rhonda McCaw



6 DERBY STREET, KEW, VIC. 3101  
Telephone: 862 3126

## 'Community House Gearing up for Busy Term'

Kew Community House is currently preparing for an active and exciting second term short course program. Enrolments are now open for the program which begins on June 16. The courses available range from pasta making to motor car maintenance. According to the acting co-ordinator, Helen Wright, many courses have already proved to be extremely popular and courses such as the Pritikin Lifestyle program "have booked out in two days".

In addition to providing an exciting short course program, Kew Community House offers typewriter and photocopier facilities. Childcare is also available. Community House is also open for those who simply wish to drop in for a cup of coffee and a chat.

Recent renovations made to the Community House have improved wheelchair access to all rooms and have generally made things "bigger and better" for everyone. The Kew Community House is open Mondays, Tuesdays and Thursdays between 9.15am and 3.00pm. A community lunch is also available daily between 12.30 and 1.30pm. Enquiries can be made by phoning 862 3126.

## Who discovered Australia?

Every Monday morning at 9.30 a small group gathers at the Kew Community House to study an interest which they have in common — Australian Social History.

The course is part of the Tertiary Orientation Program led by a very experienced tutor from the Humanities Department at Box Hill College of T.A.F.E.

It runs for the full academic year and those who wish to do so can undertake research and write essays for assessment. They can then sit for the college exams and so gain a recognised qualification for the continuance of tertiary education.

Some members of the group are there for this reason and others are there just to enjoy the experience of learning in an organised manner about the history of our country. There is much stimulating discussion and an interchange of knowledge and ideas.

There is room for a few more students and any person reading this and feeling

faint stirrings of enthusiasm would be most warmly advised to come along, taste and try; it is a good way to start the week.

Joy Norquay.

## Workers and volunteers wanted



Wurundjeri Industries is a company which employs people with disabilities to carry out paid work in the areas of garden maintenance, lawn mowing and house cleaning.

Our workers go out in groups to job sites all around Melbourne. They are fully supervised.

We are looking for additional workers and a few volunteers to fill in from time to time when our supervisors are away. If there is anyone who could donate a half or full day every two-three weeks to free our supervisor for other duties, they would be very welcome.

Our work is varied, interesting and our workers and staff are very friendly.

If you would like to join us either as paid worker or volunteer, please contact Dennis Whelan on 861 5820 or after hours, 836 3409.



## Keeping you informed

Almost every parent experiences the occasion when a son or daughter doesn't arrive home at the expected time. A feeling of apprehension grows as the minutes pass, usually dispelled by the sound of footsteps or the click of a gate. However, if time goes on and there is still no child, panic may develop. 'Parents of Missing Children' is an organisation specially created for such situations. A twenty four hour crisis line on 762 1592 will offer advice on immediate action, and when your child is found, provide counselling for both parents and children.

'Parents of Missing Children' needs new volunteers to maintain its telephone service. Can you help? Your local Citizens Advice Bureau has details and can put you in touch. Just call us on 861 5244 or drop in at our rooms opposite the Kew Library. We are open from 10am to 3pm, Monday to Friday. A friendly volunteer will welcome you.



Looking studious at the Community House.

## Kew Band salutes Ian Mathers

Ian Mathers has been associated with Kew Band for 45 years. As a result of a recent promotion within his firm, this very productive relationship has come to an end.

To mark Ian's retirement, 120 both present and past members, councillors, supporters and their families gathered at the Kew Music Centre to show their appreciation for his years of service. He was presented with a framed history of his career with the band and a plaque was unveiled naming a rehearsal room after him.

Ian has been the Drum Major of the band for some 20 years and has played a major role in training members to a high grade of marching. He has also taught many drummers and percussionists.

He is a registered drill adjudicator with the Victorian Bands' League and regularly officiates at interstate and national championship events. The V.B.L. has also benefited from Ian's untiring experience and service with over 15 years in an executive position and four years as President. In 1981, Ian was awarded the B.E.M. for services to banding.

The Kew Music Centre in Beresford Road, was his vision. Ian Mathers' drive saw the massive project through from fundraising to completion. He will continue as President of the Music Centre Co-operative.

Through motor car raffles and Bingo, Ian has raised over \$100,000 for the band to further its musical activities within Kew and the wider community.

The band will be competing in the Victorian Bands' League Winter Contest on Sunday, July 27, in the Blackwood Hall, at Monash University.



Ian Mathers and "his" room.

## Calling old Deepdeners!

Plans are well underway for Deepdene Primary 75th Anniversary and old boys and girls from Kew who braved Burke Road to attend the school are invited to help celebrate the occasion.

Deepdene Primary opened in January 1911 in the Congregational Church Hall in Gordon Street. In 1914 a two room school was erected on the present site and in 1922, the rather imposing red brick building was built.

The school has a number of events planned to recognise the anniversary. These include an **Open Day** on Friday, 8th August, from 1.30-3.30 when grade



## Of Ladies Loch and Brassey and their favourite drives

*Kew resident, Nancy Noble, sent in the following story about the naming of two of our streets.*

Lady Loch was the wife of Sir Henry Loch, Governor of Victoria early this century. She was homesick for England and used to get the Government House coachman to drive her to the high spot at the south end of what is now Lady Loch's Drive, because the view to the north over Kew's green paddocks (as they were then) and tree-clad Eaglemont and beyond to the blue mountains of the dividing range was, she said, "like a view of the Kentish Gap".

She must have introduced a fellow exile, Lady Brassey, to this view because a neighbouring street is "Lady

six pupils will show visitors around the school and there will be a tree planting and afternoon tea.

On Saturday, August 9th from 1.00pm there will be a **Reunion Day**. A musical program will be presented by past and present pupils and Devonshire Tea will be served. If you would like to attend, please get a registration form from the school office to assist the catering.

This year, the annual **Fireworks Spectacular** will have a 75th flavour. Keep Saturday, October 25th free to enjoy the food, great stalls, fun and games, leading to the magnificent fireworks display at dusk.

Deepdene's 75th Anniversary Committee is gathering items of school history. Contact Terry Usher on **817 2083** if you have any old photos or information you would like to share.

Brassey's Drive". F.G.A. Barnard, in his Jubilee History of Kew quotes a letter written by Lady Brassey to a friend: "Of all the beautiful suburbs in your remarkable city, I have been more expressly struck with Kew. If I were going to settle down in this part of the world, it is there I should select to build a residence, partly because the outlying portions of it to the north-eastward are so picturesque and salubrious, and partly because the views across the valley of the Yarra in the direction of Heidelberg and Templestowe, combine the specific charm of the landscapes in the English county of Surrey, with all that is most characteristic as regards brightness and variety in the scenery of your own country".

There is also a Lady Loch's Drive in Mt Macedon. If I remember, it goes up to the Hump, where there is a magnificent 360 degree view. She might have seen a prospect there that reminded her of England when she was staying at Government Cottage on the Mount.

# Ramblings of Kew's last cowboy

*Final of a series by Bill Stent*

Brooksby's dairy was sold to Green Acres Golf Links and Grant Hays sold half his paddocks to Mr Rogers who then had a Hereford herd but later changed to the Australian Murray Grey breed.

Unfortunately every generation has its vandals. Now and then when I arrived at the cowshed the bail would be missing, thrown into the creek. It seemed so nonsensical to me because the perpetrators couldn't enjoy the look of frustration that it engendered. The worst case was when at about midnight a fire was lit under the floor boards of the feed house. Besides the building, a quantity of feed and a new saddle which a lad who owned a horse used to keep there were totally destroyed. To add insult to injury, I received a bill from the Fire Brigade for their attendance. Apparently I should have had the building insured!

I was very pleased at the interest children took in the cows and calves. Often in the Springtime when they were down with their bottles and tins collecting tadpoles and frogs' eggs near the cowshed they would drop in and I would allow them to try their hands at milking. The kindergarten also occasionally brought their children over to see where milk came from. Animal-loving girl guides were also visitors and I was responsible for overseeing and certifying their ability to milk to obtain, I think, the Dairy Maid Certificate. None of my amateurish candidates failed.

On one occasion a cow calved in the gully which was a continuation of the Leason St. gutter which ran into the creek. It was in January and the gully was nicely grassed but a heavy storm had filled the hollow before it entered the creek. Unfortunately the cow developed milk fever and the calcium injection wasn't working. With assistance I rolled her away from the water, but as she struggled she went back in. I shopped with Mr Joyce the butcher and I mentioned to him that I would have to ring up Cockbills, the dead horse removers. He suggested ringing up a tow-truck and they might be able to pull her away from the water.

Acting on Mr Joyce's advice, I rang Kerrigans of Balwyn and asked if they could pull a cow out of a gully. He replied, 'Oh yes! I'll come down right away.' I explained where it was, at the bottom of Leason St, and he then asked what colour and make it was. I replied 'It's a black and white Friesian cow, not a car.' He hesitated and then said 'O.K.'

The tow truck duly arrived and the driver said that he had been rather doubtful and thought someone might have been having him on. The truck was edged close to the gutter while discussion ensued as to the best way of dragging the cow out. The driver was afraid he would pull her in half if he attached his chains around her body. Eventually it was decided to tie the rope on her horns and the driver gradually eased her out of the water. The long grass under the water made it easier for her to slide out. She was about six yards from the water and the incline was getting steeper. One of the onlookers, by this time there were many, said, 'I heard her horns creak. I wouldn't trust providence any longer. She is well out of the water. Give her another calcium injection and hope for the best.' This I did, tied the calf near her head, and in a few hours she was on her feet. The towing fee was six dollars.

A couple of years later, a photographer from the Department of Primary Production asked if he could photograph the cows to have it included in a set of posters for overseas. I don't know whether it was acceptable, but I received a nice big photograph of myself and the nice big Friesian cow.

In the mid-sixties, I retired and regrettably my reliable neighbour became ill and sadly did not recover. So I carried on on my own. The Asylum dairy farm had been closed and Grant Hays sent his Black Angus cows to his property on King Island. The Kew cow population had diminished to those owned by Mr Rogers and myself.

Over the years about half a dozen cows died, one apparently from being bitten on the nose by a tiger snake. Cockbills was the firm that collected the corpses for boiling down.

In the early seventies the Eastern Freeway was starting to become a reality. Grant Hays' farm was reduced to seven acres around his house. The area north of the freeway was handed over in a package deal to the golf links for the loss of their greens and club house south of the freeway. The area south of the freeway became the Hays paddock recreation area and linked up with the Council's Glass Creek property. Mr Rogers, who had bred champion cattle on the farm (his Murray Grey bull was the Sydney Royal Show Champion in 1971), moved his herd to Eagle Point Road Bairnsdale. I was the last one left. I gradually sold my cows, reluctantly disposing of the last three in 1974.

They were interesting years. The only concern was that my wife, who usually answered the telephone, was always apprehensive that she would be asked whether the cows straying on the road were hers. She half jokingly referred to the cows as the cross she had to bear.

## letter

### More on the "pink monster"

*Thank goodness someone has had the courage to criticise the gross piece of kitsch attached to the front of Kew City Hall. While appreciating the good intentions of the donors, surely this "ornament" would be more at home in Queensland together with the commercial Big Pineapple, Big Banana etc.*

*In place of the truncated cane could we not have a plaque honouring the good intentions of the donors?*

*E. McCallum.*

## Footy News

The season for Kew up to Round 7 has not been kind despite a great 15 goal win over neighbours Old Camberwell. Matches against Haileybury, Thomastown and A.J.A.X. were certainly thrown away through either lack of fitness and/or concentration at vital stages of these matches. However, Coach Serg D'Angelo is confident that the team will turn the corner and put these losses behind.

Club XVIII, however, has recorded three consecutive wins over Collegians, St Kilda and Old Scotch and are now in second position.

President, Ted Kelly, proudly announced that local firms including Collins, Sims, Stillwells, Mitsubishi and Kew's Restaurant were now supporting the club.

Interest from older readers regarding club history is still required especially prior to and after WW1.

Club details: Mick Bollman 818 6536 (H), 63 0481 (W), 817 1118 (Pav).

## Deadline

**Kewriosity** is produced and edited by the Information Officer, Susan Schwartz and a community based Editorial Committee. Copy for the August issue should reach the Municipal Offices in Charles Street, by July 3rd.