

KEWRIOSITY

Municipal Offices,
Charles St., Kew, 3101

June 1986

Kew Junction is buzzing

Bold proposal for Kew Junction

The Kew Junction Committee has produced a set of rezoning propositions aimed to simplify developmental controls and make it easier for owners and traders to improve shops and provide better service.

The proposals which are still on the drawing board are highly innovative. They take a fresh and realistic look at the shape of Kew Junction, the Junction's role in the municipality and the needs of shoppers and traders.

The proposed rezonings are directed at preserving the existing character of the Junction Business Centre while creating the opportunity for limited development and change to occur.

The geographical location of the Junction and the existence of large commercial centres around Kew combine to make dramatic growth unwarranted. However, change should

Continued P. 5

Correction

Last month, the collection time for bottles was advertised as being on the first garbage collection day of every month. This was incorrect — bottles will be picked up the first garbage collection day of each WEEK.

We apologise for any confusion resulting from the error.

Please note: Bottles are being collected by a contractor and will not be picked up at the same time as the garbage.



Have you noticed all the activity at Kew Junction? Not only can you lunch very well at the wide variety of eateries now operating, but new shops seem to be opening all the time.

Some of the more recent arrivals are a hardware store, behind the newsagent at 127 High Street, the enticing Coffee House at 147, and the very stylish men's wear shop, Nazario Parisi. And have you noticed the mouthwatering cheeses and breads in the window of Andrew's butcher shop? And the new Indian Restaurant, which has taken over from Trini's.

If you haven't been to shop in the Junction for a while, have a wander around. You'll be pleasantly surprised.

Quality of service survey P. 3

inside

Dates and notices 2
Council update 3-5
Councillor profile 4
Community news 5-8

Dates for June

11 **Kew Historical Society**, 8pm at the Kew East Primary School, Beresford Street, East Kew. Guest speaker: Mr Graeme Lindsay, the school principal. Visitors welcome. Enquiries, Sue Leong on 80 4660.

Hyde Park Uniting Church Fellowship, 2pm. Brigadier E.J. Briggs of the Salvation Army.

Goodbye to Jill Wright after 14½ years as kindergarten assistant at Argyle Road. Drop in for afternoon tea between 3.00 and 4.30pm.

12 **Kew Garden Club**, Senior Citizens' Centre, cnr High and Childers Streets, 8.00pm. Speaker: Les Russell, Curator of Creswick Gardens, on "All you need to know about pruning".

14 **Kew Football Club**: Seniors (2pm) and Reserves (11.45am) versus St Kevin's O.B. at Victoria Park, Kew.

15 **The Uniting Church East Kew Tennis Club** will be involved in the 10.30am Worship Service at the Uniting Church East Kew, as part of the club's 60th anniversary of tennis at Normanby Road.

16 **North Ward meeting**, 7.30, Kew Community House, 8 Derby Street. North Ward Councillors will meet with residents to discuss current issues.

Friends of Kew Library will meet at 8pm in Hall 3, Kew Civic Centre. Speaker: Mr Jack Bradstreet, bookseller, who will speak on collecting antiquarian books.

18 **"Friends of Bodalla"** will provide a basket luncheon at 12 noon in the Paton Memorial Hall, Burke Road, Deepdene. The \$5 donation will help raise money for equipment and amenities at the Bodalla nursing home. Guest speaker: Mrs Patricia McNair, on "The history and development of porcelain". There will be a trading table. Enquiries and bookings to 859 8016, 25 6298 or Bodalla, 862 1355 by June 11, to assist catering.

21 **Kew Football Club**: Club XVIII (11.50am) versus De La Salle O.C. at Victoria Park, Kew.

A 50/50 Parish Dance will be held at the Uniting Church Hall, Normanby Road, as part of the Tennis Club's 60th anniversary. All past members of the Methodist Church and the Presbyterian Church Tennis Clubs which combined to form the Uniting Church East Kew Tennis Club are invited to join past and current members of the club. For enquiries, contact Phyllis Duncan on 859 5477 or Daphne Pearson on 862 2000.

23 **Daytime Garden Club**, promptly at 1.30pm, Senior Citizens' Centre, cnr High and Childers Streets. Speaker: Mrs Nance Morley, on "General Gardening". Enquiries — 859 2977.

Community Walk. Take a look into Heidelberg Painters' country. Register at the Community House, 6 Derby Street or phone 862 3126.

Cont. P8

notices

Contributors:

Please send copy typed on A4 size paper. If copy is handwritten, print clearly using upper and lower case letters. Copy that is completely capitalised creates difficulties for the printer.

One book fair . . .

■ **Holy Trinity Church, Kew** is holding a Book Fair on Friday and Saturday, October 24 and 25, 1986.

If you have more books than your shelves will hold, give the surplus to us. Books may be left at the back of the church or in the porch of the Vicarage (at the corner of Pakington St and High St) or if you ring **817 1513** arrangements can be made to collect them. If you enjoy books and collect them this is a wonderful opportunity to buy at very reasonable prices. Put the dates in your diary and come to the Fair!

. . . and another

■ This year, the Friends of Kew Library will again run an October Book Fair. Start saving your loved and unloved books and take them to the circulation desk at Kew Library.

Kew Hebrew congregation

■ Services are held daily, morning and evening, at the Kew Synagogue, 53 Walpole Street.

For details of times, ring **861 9243**.

Parents for Music

■ East Kew resident, Beth Rankin, is the Melbourne-based contact for **Parents for Music**, a group of parents, teachers and community members who are interested in furthering music education through enjoyable music experiences.

"We want to make music more accessible to people of all ages, whether through playing an instrument, listening to music, joining in a dance or singing a round with a group. No music skills are required — teachers stress the sociable rather than competitive side of music," she said.

Parents for Music organises a range of activities which include family music workshops, concerts by and for children, information nights and family dances.

Anyone interested in music can join and membership includes a monthly newsletter, *The Music Circle*.

If you would like to find out more about Parents for Music, contact Beth on **859 2009**.

Cont. P8

Commentary

by the Mayor, Cr Phyllis Hore

Survey shows that bigger is not always better.

A survey of the effectiveness of provision of a wide range of services in 12 municipalities, has produced concrete evidence that big does not necessarily mean better.

The survey, commissioned by Kew and Hawthorn Councils, was conducted in November 1985, by ERU Research Services. Data was collected from 3,700 telephone interviews, with a minimum of 300 in each municipality. It concluded that there was no correlation between size and effectiveness of service delivery.

Councils surveyed, ranged in size from 28,000 to 90,000. Kew's population is around 30,000.

The survey focused on determining the degree of resident dissatisfaction with specific services within four categories: Roads, footpaths and trees; Refuse and

rubbish collection services; Recreational facilities and services and Council responsiveness to enquiries.

While the survey revealed very few significant areas of perceived dissatisfaction in the delivery of services in Kew, certain areas were identified as needing attention.

Residents expressed concern about the infrequency of hard rubbish collection, swimming and library facilities and the condition of some footpaths. This is in accord with Council's opinion and reinforces the importance of work currently being done in these areas.

Kew Council's responsiveness to residents' problems, complaints and queries was perceived very positively by most residents. In fact, Kew had the lowest dissatisfaction level in this

area, of all councils surveyed.

The summary ranking of dissatisfaction from lowest to the highest confirms that size and effectiveness of service delivery are not necessarily connected. The smallest municipality had the lowest overall level of dissatisfaction, followed by the two largest cities. The third largest city had the highest level of dissatisfaction with delivery of council services.

Kew scored midway on the overall ranking.

These results indicate no support for the argument that there is a correlation between size and the effectiveness of service delivery, an argument which is an important part of the push for the restructure of local government.

Last year, Kew and Hawthorn Councils organised an independent study of the financial performance of the same 12 councils which concluded that financial efficiency is also not dependent on size.

Resident opinion as reflected in the quality of service survey will be an important influence in Council's forthcoming budget discussions. Reference to both this and the financial survey will be made in Council's submission to the state government on restructure.

New faces at Kew Council

Children's Services Officer

Hard at work designing a comprehensive Children's Services Policy for Kew, is our new Children's Services Officer, Elizabeth Sullivan.

Elizabeth grew up in East Kew, attending kindergarten at St Paul's in Windella Avenue and going to East Kew Central. In some ways her coming to Kew is a return to base — but with a different perspective.

She will be working with the Kew community, ascertaining needs in family and children's services and developing an integrated approach to the provision of these services. An important part of her work is to act as a link person between community groups and the Council.

Apart from being the mother of two sons, Toby, 12, and Luke, 9, Elizabeth has had extensive experience with children, having a background in teaching and psychology.

While she found working in these areas satisfying, it is the opportunity to meet a wide range of people and the

broad scope provided by her new job, which she finds particularly appealing.

"I will be liaising with playgroups, Infant Welfare Sisters, kindergartens, Family Day Care, After School and Holiday Program Co-ordinators, for a start. I am also anxious to meet any other groups or individuals in the community who are concerned with children so that I can learn about their needs first hand and work to develop responses to these needs," she said.

If you have any ideas about what you would like to see by way of children's services in Kew, contact Elizabeth at the Municipal Offices, on 862 2466, between 12 noon and 2pm on Monday, Wednesday and Friday.

Integration Officer

Craig Midgley will be spending the next six months with the Council developing community awareness about the recreational needs of people with disabilities.

He will be looking at all the public and private leisure and recreational opportunities available in Kew and working with our Recreation Co-ordinator, Carolyn Graham, on ways of encouraging the integration of people with disabilities.

They will be defining recreation very broadly to include activities ranging from participation in a sporting club, to going shopping.

Craig's position is fully funded by the Department of Sport and Recreation. He is a Recreation Officer and comes to us after working for a year at a recreational centre in Hobart catering for people with disabilities.

Council meeting times for June

- 3 General Purposes Committee 7.30pm
- 10 COUNCIL 8.00pm
- 17 Standing Committees 7.30pm
- 24 General Purposes Committee 7.30pm

Meetings are held in the Committee Rooms at the Municipal Offices in Charles Street and are open to the public.

Recreation Centre Update

Council received many comments from residents about the proposed Recreation Centre after the recent display period.

Strong support came from people who expect the centre to cater for all round swimming needs, overcoming the inadequacy of existing facilities. They see the Centre suiting a wide range of users — recreational and serious swimmers, the aged and the disabled — and want it built as soon as possible.

Others want the new Centre, but they also want to keep the existing pool.

A number of people were concerned

about the cost of the Centre and the effect on rates.

All comments have been reviewed by the Recreation Centre Committee, which also spoke to representatives of those wishing to keep the outdoor pool. Having reconsidered this question, the Committee will recommend to Council that the outdoor pool not be retained because of the comprehensive range of the proposed facilities.

Cost will be the major barrier to the early construction of the Centre. Council has allocated \$2.9m to the project, but recent estimates suggest that the cost

may be markedly in excess of this amount.

Council has little capacity to find more funds for the Centre in the short term, so economies will have to be made if work is to proceed in the near future.

North Ward meeting

North Ward Councillors Wendy Smith, Maree Williams and Joe Ormando, invite residents to a meeting on Monday, June 16 at 7.30pm at the Community House, 6 Derby Street.

The meeting has been arranged to give an update on Council activities and to provide North Ward residents with the opportunity to offer their opinions on issues which concern them.

IN BRIEF

Profile

Cr Anne Glasson

Councillor Anne Glasson is very people oriented. She values family and community highly and the desire to protect the quality of life in Kew was a strong motive in her decision to stand for Council almost three years ago.

She was brought up in Adelaide and spent some years in Sydney. Her involvement with community groups began there, and apart from school and kindergarten committees, she was an active member of the Bushland Preservation Society at Greenwich. Cr Glasson has been a Kew resident for 9 years.

It is the smallness of Kew that she likes, the village atmosphere which comes from knowing the shopkeepers by name and waving to familiar faces in the street.

"Kew Junction is such a human shopping centre. The current trend to major developments saddens me. They will push the small shopkeepers out and add to traffic congestion," she said.

Cr Glasson considers the buildings going up in Cotham Road and Derrick Street to be examples of over development, which dwarf their surroundings.

The wish to protect the local character of Kew is also evident in her opposition to council amalgamation proposals.

"There is no convincing argument in favour of amalgamation. All indications are that it will increase costs and not reduce rates," she stated.

Concern for municipal spending has caused her to temper her enthusiasm for the Recreation Centre. Although she regards the centre as a very good idea and was a member of the Recreation Centre Consultative Committee for 18 months, she sees the initial and on-going costs being a considerable burden for ratepayers.

Cr Glasson is adamant that she is not a power broker. She derives her satisfaction as a Councillor from her involvement in social welfare issues. She is a member of the Kew Community Action Group, the Regional Consultative Committee, the

Inner Eastern Housing Council and represents Council on the CAB.

"People consider Kew to be an affluent suburb but there are people in need here, too. Our region has the second lowest level of public housing stock in metropolitan Melbourne and there is not one crisis house in Kew or Hawthorn," she said.

Anne Glasson is very aware of people's needs both at a community and individual level. A trained nurse, she has experience in general, midwifery and industrial nursing and now works part time as an occupational therapist at the Overton nursing home in Kew.

Listening to her speak about the complexities of the lives of people she has met throughout her career, confirms the impression that Anne Glasson has a deep concern for fellow human beings.

She is frustrated by the slow pace of the bureaucratic process, just how long it takes to initiate change. She considers that the number of councillors in Kew inhibits effective local government.

While council activities take up much of her time, Cr Glasson puts a high priority on family life. Her husband Bill is an engineer and they have three children: Alison, 21, Mary Jane, 19, and 15-year-old Richard. For relaxation, Anne Glasson loves to garden and a night out at the theatre or ballet is a very welcome change from the round of committee meetings.



Anne Glasson and Kath McClure, making bread at Overton.

Calling Kew business people!

The Group Apprenticeship Scheme proposed by the Association of Inner Eastern Councils has been approved by the Minister for Employment and Industrial Relations.

The scheme aims to create employment and increase the availability of skilled tradespeople in the region by increasing the number and range of apprenticeship opportunities. A similar scheme operated by the Outer Eastern Municipalities Association has been running successfully for the last three years.

The Inner Eastern Region has a large number of small businesses operated by or employing skilled tradespeople which could benefit from this scheme as it does not require the commitment of a four year indenture. Experience has shown that motor shops, electricians and plumbers have found the scheme particularly helpful. At present, the

scheme is being administered by a steering committee which will continue to act until an incorporated association with a board of directors can be set up.

Councillor Jim Tutt, Kew's representative on the committee, is calling for local business people to nominate for membership of this board of directors.

"While the A.I.E.C. will continue to be involved, the apprenticeship scheme is distinct from municipal operations. We would like a high level of private sector involvement. In fact, the success of the scheme depends on support from local employers," he said.

"We need people who are committed to the development of trade teaching and employment in our area. Ideally, nominees should have entrepreneurial and business skills or experience in trade training and personnel management."

If you would like to take this opportunity to give service to the local community and enhance business development in the region, please contact Councillor Tutt on 861 6243.

New faces cont.

Craig would like to hear from community members who would like to participate in the project, whether as workers in the field or as leisure providers. He particularly wishes to meet people with disabilities who would like to take part.

He can be contacted on Tuesday, Wednesday and Thursday on 862 2466 or 861 6828.

NO BURNING

on Sundays or Mondays

On other days burning is permitted **between 8.00am and 6.00pm.**

Why not consider composting or mulching leaves? Don't waste our natural resources!

Safeway expansion

Work began early in May on the expansion of Kew Safeway and the construction of a two level carpark to the front and west of the store.

The building program has been divided into three stages to ensure that a minimum of 75 car parking spaces will be available for shoppers on land adjacent to Safeway. A further 50 parking spaces will be provided on land in Walpole Street, opposite Safeway.

Easy access to the supermarket will be maintained at all times.

The first stage of the program will be the grading and sealing of a temporary carpark in the front of the store. Construction of the decked carpark and the store expansion will take place as the second stage.

The third stage will see the completion of the works, which is planned to occur well before Christmas.

The right of way at the rear of the High Street shops will be kept clear at all times and both Kew Council and the developers will make every effort to minimise inconvenience to residents, traders and shoppers during the construction program.

Kew Junction cont.

occur to improve the physical environment, the range of goods and services available and ensure greater convenience for Kew residents.

The proposals also aim to eliminate existing anomalies in the planning scheme and to allow productive use of all commercially zoned land.

Within this framework, there are developmental objectives for the Junction. These include revitalising the centre through increased competition and a wider variety of shops; consolidating the retail core of the centre to the north of High Street and so reducing walking distances; improving vehicle access and the provision of additional parking.

Encouraging the development of landscaped pedestrian walkways and arcades and improved amenities including additional toilets and seats are also important objectives.

In order to achieve these objectives, it is proposed that the existing restricted business zone be divided into a retail core (Commercial A) and a retail fringe (Commercial B); that there be a business and industrial zone south of High Street and high and low density office zones to the east and west of the centre.

The most innovative proposal is for a buffer between commercial zones and

activity and residential areas still retaining a high degree of residential amenity. One way of creating this buffer will be to encourage uses in existing residential buildings within the zone to preserve a residential appearance.

The creation of this zone is part of a strategy to protect the amenity of the Residential C Zone. Some commercial uses and developments which are now permissible in the Residential C Zone would be restricted only to the Residential Buffer Zone.

The criteria used for selection of this zone include residential properties which are already subject to a high degree of non-residential activity, which will or could be compromised by future development or uses in adjoining commercial zones or which are severely affected by traffic and kerbside parking.

There are detailed objectives for each zone which stipulate exactly the type of development and use permissible. Zone controls will also include policy guidelines for discretionary uses.

These proposals have been on display during May and will be available for public scrutiny during June, in the foyer of the Municipal Offices and in the library.

Council is keen to have public reaction to the proposed changes, particularly to the idea of commercial/residential buffer zones.

Any enquiries about the proposals should be directed to the Town Planning Department, on 862 2466.

Q Student Gallery opens

Mr Cathie, Minister for Education, opened Victoria's first student-run art gallery at Kew High School, in early May.

He spoke of the gallery as being the best example of the positive results of the changes in education at senior level.

The organising, publicising and mounting of exhibitions is integral to the Gallery Studies course which Kew High is offering as part of its School Tertiary Certificate (STC), an alternative to HSC.

Ms Penelope Ann, an art teacher who was involved in the organisation of the Statewide Regional Art/Craft Exhibitions, is running the course.

"Gallery Studies has two sections. Students learn about all aspects of running a gallery and they also take practical Art and Craft and either Media Studies or Graphics. Their motivation is high because they are involved in group decision making and are also encouraged to use their own initiative," she said.

The former gloomy basement of the school has been converted into a bright and spacious exhibition area with the help of \$30,000 government funding and the labour of students, staff and parents.

The students will be holding exhibitions of art and craft work from primary and secondary schools throughout the year. The first well-attended show was of work by Kew High students from all levels. Exhibits were of a high standard and used a range of media.



Volunteers needed

Wurundjeri Industries operates as a sheltered workshop which employs people who are intellectually disabled. Wurundjeri employees carry out gardening and house cleaning under supervision.

We need a number of volunteers who would be prepared to work with us for half a day per fortnight or month or just to be available from time to time to fill in when staff are away.

The work is interesting and varied and would suit people who like healthy work outside.

For enquiries, please ring Dennis Whelan, on 861 5820.



Keeping you informed

Do you get worried when you have to fill in an official form?

Many people do, particularly if English is not their first language.

The Kew Citizens' Advice Bureau is staffed by trained volunteers who will help you with the answers to those tricky questions and any information supplied will be strictly confidential.

If you are having form-filling problems, just call in at the CAB. We are open from 10.00am to 3.00pm each week day at the City Hall, directly opposite the Library entrance.

You will receive a friendly welcome.

Band news

Junior Band

Thirty youngsters, from beginners to advanced, rehearse on Monday nights from 6pm to 8pm in the music centre. There are limited vacancies for brass players.

The band has a wide repertoire of popular and serious music. A musical weekend is planned in July when they will journey to Beaufort for a music camp and concert with the Beaufort band. August will see the band competing in the Victorian State Junior Championships.

Senior Band

After working hard for the National Championships in Adelaide at Easter (where the band gained second place) the players have had a spell. However they are now preparing for a concert in the Robert Blackwood Hall at Monash University on Monday 23rd June. This will be a most entertaining night.

Thanks to all in the community who supported our recent car raffle. Don't forget our other fund-raising effort — bingo — Saturday nights in the music centre.

Members are excited with the news of an invitation to attend the **Fetes. Geneve** (Geneva Festival) in Switzerland in August 1987.

join us in planning for our new centre. ring Marg AH 861 7854

KEW FULL DAY CARE CENTRE
INCORPORATED

Kew peace project gets grant

The Kew Peace Project has received a Victorian Government grant as part of United Nations International Year of Peace.

Fifteen hundred Kew residents have already received a mailed questionnaire designed to survey community opinions.

Further activities involve a public meeting, courses on nuclear issues (July and August), a peace festival, a youth art exhibition and a presentation to Kew council.

The project arose from the conviction of a group of citizens that, firstly, there is a real possibility of a world free of the ever-present threat of nuclear war and, secondly, that they would do what they could to advance the cause of a nuclear-free world.

The Kew project is independent of any group or political party.

The project aims to help Kew citizens to gain an awareness of what they, as responsible individuals, can do to contribute to a world free of nuclear threat.

The Kew project may provide a model for similar projects in Australia and other countries.

If you would like to take part or would like further information, ring 818 1245 or write to Kew Peace Project, P.O. Box 500, Kew, 3101.



Kew Peace Project

Deadline

Kewriosity is produced by the Information Officer, Susan Schwartz, and a community-based Editorial Committee. Copy for the **July issue** should reach the Municipal Offices in Charles Street by **June 3rd**.

How Kew became home for Renaissance Dance team

Wednesday evening passers-by outside the parish hall of St Paul's Anglican Church in Windella Ave, East Kew, could be forgiven for thinking that yet another "Keep Fit" class was in progress.

But the sedate rising and falling, the sprightly hopping and the enthusiastic circling of the group within has little to do with fitness.

For these are members of the Rippon Lea Renaissance Dancers, Australia's leading Early Dance team. They have chosen Kew as the centre for its year-round training program, which includes dances dating back as far as the court of King Henry VIII.

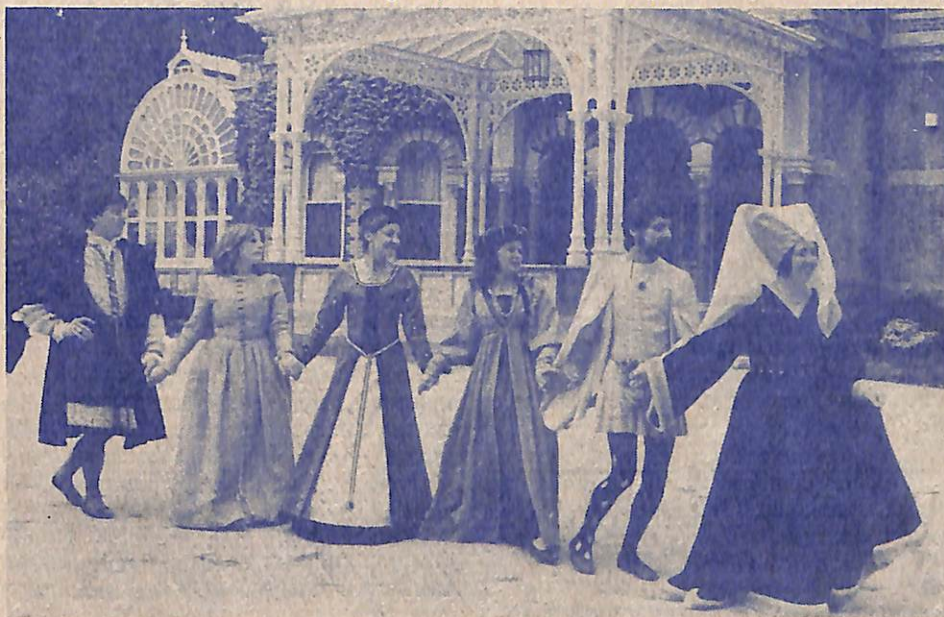
As its title suggests, the dance group

was originally founded at the National Trust home "Rippon Lea", in Elsternwick, but four years ago it was decided that a more central venue for classes was required, and Kew was the place which seemed most suitable.

Now, on Wednesday evenings, students from Chadstone, Essendon, Olinda and many other Melbourne suburbs take part in classes at St Paul's where they are also joined by a number of Kew residents who have decided to take the opportunity to dance in the old-world manner.

Those who study Renaissance Dancing in Kew are part of an international group working under the direction of noted Early Dance researcher and teacher, **Helga Hill**.

Helga, who has just returned from her 25th overseas teaching engagement, is counted among the top two or three researchers, leading the current worldwide revival of Renaissance Dancing. Those wishing to join her classes may contact her by phoning **699 8417 (A.H.)**.



Members of the Rippon Lea Renaissance Dancers outside the group's original "home", the National Trust's stately mansion, "Rippon Lea", in Elsternwick. Now the dancers have established their classes in East Kew.

A story with a happy ending

In January, Kew Council was contacted by Pastor Martin Hankemeier, of Lage, West Germany. He was trying to discover the whereabouts of a Mr Deitrich Werthauer.

Mr Werthauer suffered under the Nazis and came to Australia in 1946, leaving many friends in Germany. Pastor Hankemeier has been trying to get in touch with people like Mr Werthauer, so that contact

with friends in Germany could be resumed.

Our Deputy Town Clerk, Bob Worcester, playing the detective, found that a property in Kew had been purchased by a Mr Richard David Werth in 1946. It was subsequently sold in 1960 and this information plus a quick look in the phone book confirmed Mr Werth's current address.

An article in a German newspaper recounting the story and Pastor Hankemeier's discovery that Mr Werth was the former Herr Werthauer, referred to Kew Council as "most unbureaucratic". High praise indeed!

Dates continued

- 26** **Kew Arthritis Self Help Group's Annual General Meeting** with election of office-bearers will be held at the Senior Citizens' Centre at 10.30am. Guest speaker: Peter Hunter, on "Crime Prevention: Home and Personal". Visitors most welcome. Contact 862 2021 or 818 4644.
- 28** **Kew Football Club:** Seniors (2pm), Reserves (11.45am) versus Hampton Rovers at Victoria Park, Kew.
- 29** **The Baby Show** with Franciscus Henri, at the East Kew Uniting Church, Normanby Road, East Kew, between 2.30pm and 4.00pm. The show has been arranged by Parents for Music. Tickets — \$10 per family (members), \$12 per family (non-members).

The Probus Club of Kew

■ **The Probus Club** of Kew provides regular meetings for retired and semi-retired professionals, businessmen and executives who appreciate the opportunity to meet others in similar circumstances and of a similar level of interest.

The club is non-political, non-sectarian and is not a fund-raising organization.

Meetings are held at the RSL in Cotham Road, at 10.00am on the fourth Thursday of every month, after which, from time to time, a light luncheon is served.

The Mayor of Kew, Cr Phyllis Hore, addressed the club in April and the Lord Mayor of Melbourne, Cr Tom Lynch spoke in May.

The Secretary of the Club, Don McKendry, may be contacted on 859 2630.

Deepdene and District Inter-Church Council

Twenty years ago, Christian churches in this area first combined to promote and nurture ecumenism and goodwill between different denominations. Today the Council is pursuing the same ends with enthusiasm and initiative.

Member churches are: **Our Lady of Good Counsel (Catholic)**, Deepdene; **Paton Memorial Uniting Church**, Balwyn; **St. David's Uniting Church**, Canterbury; **St. Paul's Uniting Church**, Balwyn; **St. Mark's Anglican Church**, Canterbury; **St. Martin's Anglican Church**, Deepdene.

Current examples of the spirit of the Council in action are:

A series of Bible Studies at St Mark's on 21st and 28th May and the 4th and 11th June;

A "week of prayer" for Christian Unity at St. Paul's from 8th-18th May, culminating in a Whitsunday Service on Sunday 18th May;

An item in St. David's newsletter dated 20th April: "**Hospitality:** Members willing to provide hospitality for Roman Catholics from the country during the Papal visit please give your names to the minister."

You can help the Salvos

Thousands of people depend on The Red Shield Community Services and thus also depend on the success of the Red Shield Appeal which will be held this year on **Sunday, July 6.**

And you can help by giving your services as a collector for about two hours on this day joining with school groups, service clubs, scouts and guides, many of whom have already offered their services.

Just contact Mr Andrew Ronia-Horvath on 859 2736 or Captain Joan Barker, 846 3992 who are waiting to hear from you.

Caring for cats (dogs and maidenheads too!)

The Animal Feeding Service, which cares for pets and plants while their owners are away, is looking for a mature person who loves animals to become the Kew Branch Manager.

It is part-time work — one hour morning and afternoon except during the holiday periods.

References and a car are essential. Full training is given.

For further information, please contact Mrs Gregory-Sinn, on 241 8030.

letter

Sculpture fit for Luna Park?

I was prompted by your correspondent Barbara Giles to write to you to express a shared dislike of the "sculpture" on the Cotham Road face of the City Hall. This piece would be more appropriate to Luna Park than to our City Hall and I would suggest it might be offered to the Luna Park management.

—R.M. Ferrari

Footy News

Kew has started its season in the Victorian Amateur Football Association with mixed results. With two rounds played during April the Seniors have recorded one win, the Reserves two losses and the Club XVIII, two wins.

The Seniors had a great first-up win against Hampton Rovers. An unexpected second round loss to MHSOB, however, certainly counteracted this first great win. Disappointed coach, Serge D'Angelo, stressed that undisciplined players would pay the penalty for this loss as would opposing teams.

The Reserves fielded injury-depleted sides in these first two matches. With promise shown, a win is most certainly just around the corner.

The Club XVIII recorded two great wins against Old Brighton (34 goals) and Port Colts (12 goals). Full credit must go to new Captain-Coach Richard Lindsay for his moulding of the team.

Kew Football Club plays its home matches at Victoria Park, Kew, where first-class facilities are provided for both footballers and spectators. Car parking is free around the ground (please be early) and a fully-stocked kiosk is open for food and refreshments. A social room with full view of the game is also open in case of inclement weather. (See Page 2 of Kewriosity Sheet for June fixtures.)

A history of the Kew Football Club is being compiled and Secretary Michael Bollman would be delighted to hear from any older readers who remember the old Sub-District, Recorder Cup and Victorian Junior Football Association days.

Club details: Secretary — Mick Bollman (H) 818 6536, (W) 63 0481, (Pavilion) 817 1118.