

KEWRIOSITY

Municipal Offices,
Charles St., Kew, 3101

May 1986

Villa Alba opens its doors



Entrance Hall, Villa Alba.

People were queuing half an hour early for the Villa Alba Open Day on Sunday, April 13th. In three hours 700 people visited the house.

This Victorian mansion, built before 1863 and substantially remodelled in 1880, is imposing enough from the outside but it was the interior that Sunday's visitors came to see.

The leading Melbourne decorators of the time, the Paterson Brothers, were given a free hand to be as lavish as they wished. The main upstairs bedroom was designed to resemble an oriental sultan's palace, with the ceiling in blue, russet and gold and panels depicting ibis and sacred birds.

Today, it is necessary to use one's imagination to appreciate the intricate designs. While the fireplaces with their ornate tiling are intact and large sections of the magnificent ceiling decoration remain, much deterioration is evident.

The hand stencilled wallpaper has been painted over. Although it is possible to remove the paint — small sections of wallpaper can now be seen — the task of restoration will be mammoth.

Thankfully, the elaborate frieze work showing scenes from the Waverley novels was not touched.

Cont. P.5

Quality of service survey P. 3

Put those bottles out

New arrangements will commence on **Monday, April 28th** for the collection and recycling of bottles.

Bottle collection by garbage crews stopped recently because of hazards to crew members. Bottles have burst when they jammed in the truck's compacting mechanism and again, because of danger to crews, storage outside the trucks has not been possible.

As a short term measure, residents have been encouraged to take their bottles to the recycling centre at the Depot in Princess Street.

For residents' convenience, Council has entered into an arrangement with the Austral Bottle Company to collect bottles left out with the garbage on the **first collection day** of the month.

Although the new service will commence on April 28th, bottles can still be left at the Depot, where the hours of opening have been extended to between 10am and 2pm on **Saturday and Sunday**.

Calling all clubs

If you are involved in a club in Kew, would like to increase your membership and haven't used these pages to spread your message — try it!

The Kew Chess Club gained eight new members and four visitors to their Open Night after their notice appeared in this paper.

Use Kewriosity to let Kew know what your club is doing!

inside

Dates and notices 2
Council update 3-4
Councillor profile 4
Community news 5-8
Bill Stent's ramblings 8
Kew High: a student centred school 7

Dates for May

5 **Walk by the Yarra.** Meet at the Kew Community House at 1pm. For registration phone 862 3126.

6 **Kew Philharmonic Society's** first subscription concert for 1986 at the Paton Memorial Uniting Church, Burke Road, Deepdene, at 8pm. Program includes pieces by Mozart and three anthems involving choir and orchestra. Tickets \$6 or \$4 concession. Enquiries Valda Fouvy, 817 1881 or Lola Stokes 817 3186.

8 **Hyde Park Uniting Church** fellowship, at 2pm. Speaker: Maureen Day from Kew Council on "Community services for the aged." Kew Garden Club, 8pm, in the Kew Senior Citizens' Centre, cnr High and Childers Streets, Kew. Speaker: Mr Furneaux, on Chrysanthemums. Enquiries 859 6086. Kew Historical Society will meet at 8pm at the Manchester Unity Hall, Union Street, Kew. Speaker: Cr Joe Ormando, on the Kew Junction Shopping Centre. Visitors welcome. Enquiries: Philip Barnes, 819 3118.

22 **Kew Arthritis Self Help Group** will meet at 10.30am in the Senior Citizens' Centre, cnr High and Childers Streets, Kew. Speaker: Karen Rawnsley from the Commonwealth Bank's Women's Information Service. Visitors welcome. Contact 862 2021 or 818 4644. Kew Early Planning for Retirement Group will hold its quarterly meeting at 8pm in Hall 3, Kew Civic Centre. Speaker: Sergeant Jeff Maher of the Kew Police, on crime prevention, home security and Neighbourhood Watch. Non-members welcome. Enquiries 817 1621.

24 **Baroque and Classical Concert** by the Elsyium Ensemble, 8pm, St Paul's Anglican Church, cnr Windella Ave and Hale Street, East Kew. Tickets \$10, concession \$6. Bookings 859 4775, 819 4048.

26 **Daytime Garden Club,** Senior Citizens' Centre, cnr High and Childers Streets, Kew, 1.20pm. Speaker: Norman White, on Chrysanthemums. Australian Plant Group, 8pm in the Senior Citizens' Centre, cnr High and Childers Streets, Kew. Enquiries 817 2255.

28 **KEW FESTIVAL.** Public Meeting to elect the committee for next year's festival, at 7.30pm in the Committee Rooms at the Municipal Offices in Charles Street. Be part of the planning for this major community event.

30 **Dinner and music** with the Melody Jays, in the Uniting Church Hall, cnr High Street and Normanby Road. For information and tickets, contact Phyllis Duncan on 859 5477.

7PM. CAS.

notices

Playgroup

■ **Highbury Grove Playgroup** in the Uniting Church, Highbury Grove, Kew, offers support for parents/guardians of pre-school children on a drop-in basis. The Playgroup is run by mothers and there is a trained co-ordinator in attendance on Wednesdays and Fridays. Hours: Monday 10.30am - 12 noon. Wednesday 10am - 12.30pm. Friday 10am - 12.30pm. Please supply a piece of fruit for Wednesday and Friday sessions. New members always welcome. For further information please contact Marion Erjavec 859 2144 or Karen Clarke 862 1189.

Open day

■ **Kew High** will be holding an Open Day on Wednesday, April 30th between 2.30pm and 8.30pm. All visitors will be most welcome. For enquiries, contact Mrs Susanne White on 859 8652.

WANTED: home based child care workers (Full and Part time)

Family Day Care is a co-ordinated child care scheme where babies and young children are catered for in small groups in the private homes of carefully selected caregivers. It offers an alternative to child care in a centre but still ensures that those working within the scheme have the backing and expertise of professionals to call upon.

The Hawthorn/Kew scheme caters for people living, working or studying in the municipalities of Hawthorn and Kew.

Caregivers are needed in some areas. Caregivers may be mothers already caring for their own children, single people or grandparents. The main prerequisite to be a caregiver is a warm nature and a love of children.

To allow for greater individual attention, Caregiver groups are limited to a maximum of four children. Caregivers are paid an hourly rate for their work.

If you would like to know more about becoming a Caregiver, please ring or come in and see the Co-ordinator Kim Hainsworth at the Hawthorn/Kew Family Day Care Office, 372 Burwood Road, Hawthorn.

Commentary

by the Mayor, Cr Phyllis Hore

Kew and Local Government Restructure

All Kew residents will by now be aware of State Government plans to restructure local government.

The key document which sets out the framework for the restructure process is the Local Government Commission's "Principles and Programme" report of February 1986.

This document outlines criteria which will determine future municipal boundaries. Two criteria are of basic importance. Metropolitan Councils should have populations not less than 40,000 and rate revenue of not less than \$6 million.

With a population of 30,000 and 1985/86 rate revenue of \$5.6 million, Kew will be very closely scrutinized by the Commission.

The Commission's processes put Kew into the "Eastern Melbourne" segment which incorporates Kew and Hawthorn on the west, out to Healesville and Upper Yarra on the east. It includes 14 municipalities and a total population of 836,000.

Options for the Eastern Melbourne segment will be the subject of a Commission report in June, and a formal inquiry is due to report to the Minister for Local Government by the beginning of October. A government decision on the future of Kew is expected by the end of 1986.

Council told the Commission last December that it "does not desire either the restructure or amalgamation of the City of Kew".

Most recently, Council has decided to prepare a document setting out the advantages and disadvantages of amalgamation and likely options. To be available in June, this paper will provide information for the Kew community and allow an informed consultation process between residents and Council.

Significant change to Kew has implications both as to costs to ratepayers and the nature and standard of Council services. The Commission's report is available at the library and you are encouraged to read it.

Next month we will publish the results of the Quality of Services Survey and of a Financial Study of Local Government. Both survey and study were commissioned jointly by Kew and Hawthorn Councils and were based on a comparison of the performance of 12 municipalities in varying sizes. We intend to use the results of the surveys in our submission to the Government.

Next month we will also provide you with an opportunity to make known to Councillors your views on restructuring.

New face at the Occasional Care Centre

Margaret Farnfield, Co-ordinator of the Occasional Care Centre since March, is a State Registered Nurse. She has had experience nursing children at both the Children's and St Vincent's hospitals.

She finds her new job demanding but very enjoyable. "It's fascinating working with pre-school children — they develop so quickly. They are little people and very discerning in the way they relate to adults."

Margaret has noticed a number of parallels between nursing and running the Occasional Care Centre. They both require similar skills in meeting basic needs, managing staff, observing a routine and above all, nurturing.

"At the Occasional Care Centre we can be far more flexible than in a hospital. There is no bureaucratic rigidity here," she said.

Margaret has found an outlet for some other interests in her new job. Not only does it give her scope to teach but she just loves having a free rein with scissors, paste and coloured paper!



Margaret Farnfield.



Traffic Management

AREA 5 — bounded by High/Princess/Earl & Asquith Streets

The detailed design for this scheme is nearing completion and approval by the Road Traffic Authority for the "Major Control Items" included in the scheme should be received shortly. Tender documents will now be prepared to enable a contract for the works to be let.

AREA 6 — bounded by Cotham/Burke and Harp Roads/High & Charles Streets

Meetings of the Committee were scheduled to take place in April.

AREA 10 — bounded by Cotham/Burke/Barkers and Glenferrie Roads

Council has decided that the existing temporary traffic management devices in Wrixon Street are to be made permanent. The temporary island in Wellington Street is to be removed but the kerb extension on the west corner of Wellington Street at Coleridge Street is to be constructed in a permanent form.

Council: meeting times for May

- 6 COUNCIL 8.00pm
- 13 —
- 20 —
- 27 Standing Committees 7.30pm

Meetings are held in the Committee Rooms at the Municipal Offices in Charles Street and are open to the public.

Library relocation

A project manager has been appointed to oversee the design and costing of the City Hall conversion.

The firm appointed is to guarantee a maximum price for the work prior to the conversion commencing.

Preliminary designs for the relocated library are available in the library and final designs will be made public during May.

It is proposed that work will commence in June.

Changes to Planning Scheme in Kew Junction?

A concept which will simplify and rationalise procedures for expansions to existing shops and premises has been proposed by the Kew Junction Committee in order to encourage the modernisation of the centre.

They also aim to identify specific new developments which are particularly suitable for each zone and to allow smaller versions of these to proceed without permits, provided certain stringent conditions are met.

IN BRIEF

This concept for statutory land use controls recommended by the committee will be on display during May in the foyer of the Municipal Offices and in the library.

Council is keen to have public reaction to the concept and in particular, to the idea of buffer zones designed to protect the amenity of residential areas adjoining commercial zones.

Restructure

A consultant with extensive local government experience has been engaged to prepare a report for Council which will summarise and evaluate all restructure options open to Kew.

An information paper will be made available to residents after Council has discussed this report.

Consultants for Heritage Study

The Kew Heritage Committee has engaged a team of consultants to carry out the Kew Heritage Study in accordance with the Ministry of Planning and the Environment's brief.

The team comprises two professional consultants as well as an historian and a planner. All have extensive experience in the field.

The consultants will use their expertise to identify, analyse and determine the historical and architectural significance of buildings, including houses, monuments and sites in Kew.

For further information, contact Cr Jill O'Brien on 861 5216 or Kew's Town Planner, John Waugh on 862 2466.

Rec Centre

Council's Recreation Centre Committee is reviewing the submissions received during the public consultation period.

The outcome of the review and the latest information on the Rec Centre will be featured in next month's Kewriosity.

Profile

Cr Noel Seletto

It was concern with traffic management devices in Sackville Street that motivated Noel Seletto to stand for Council in College Ward, two years ago.

He aims to protect rate payers' money and ensure that it is spent for maximum community benefit.

"Traffic management, while important, can absorb funds dramatically," he said. "I would like to see a balance of effect with equity to prevent excessive spending in this area."

Cr Seletto would like to achieve better conditions for his ward, particularly with the upgrading of roads and footpaths. While he regards the maintenance of basic services as most important, he considers the development of human services almost equally so.

"We have to provide for the essential needs of residents and one of these needs is childcare. Kew requires a council-run full day child care centre badly and its provision should be a very high priority."

Another "must" for Cr Seletto is

the upgrading of the library. He would like to see the relocated library have a more ambitious design than is currently being discussed. For him, a library is a real community meeting place, an area for leisure and learning which should be as attractive and offer as wide a range of information as possible.



Noel Seletto and daughter Kristen.

He regards the Recreation Centre as fine in principle but it is not highest on his list of essential projects. He does see the potential for the Recreation Centre to become a focus for community activity.

"It should be multi-functional, combining a full day child care centre, the Youth Resources Centre and the Community House with a range of recreational activities."

Cr Seletto describes his approach as "pragmatic" and uses business terminology when speaking about Council. He takes a costs-benefits approach to projects, within the context of maintaining basic services. Perhaps this derives from his experience managing a trading company, "Intercontinental Metals".

As a business man, he does not like to see short term gains which limit options in the long run and he has particular ideas about the way councillors provide service to the community.

"We have too many councillors and there is not a high enough turnover. Kew needs no more than 6-8

good gardening



Don't burn those leaves!

Leaves make excellent compost so please don't burn them.

Compost is an excellent soil improver and fertilizer and all types of leaves can be used to make it.

Some leaves, such as Plane tree leaves decompose more slowly but you can speed up the process if a light sprinkling of lawn food (sulphate of ammonia) is mixed with the leaves.

For best results, the heap should be kept moist and turned once a month.

Peter Davies

Profile cont.

councillors and they should be limited to two terms of three years," he said.

"Fewer councillors with more flexible approaches would expedite the council process considerably," he said.

Cr Seletto is impressed by the scope of Council activities but the low awareness of the range of council responsibilities in the community disturbs him.

"People are unaware of the degree to which Council decisions affect their lives. If they were more aware, we would not have the frequently uncontested elections we now have."

Cr Seletto sees restructure as inevitable and essential. He considers Kew to be an efficient and well run Council but anticipates only benefits from enlarging our rate base and having the ability to employ more specialists.

Cr Seletto, wife Barbara and children Timothy and Kirsten have lived in Kew for 8 years. For him, Kew is a beautiful residential suburb whose character is not under imminent threat.

Outside family, business and Council responsibilities, Noel Seletto enjoys sailing his catamaran, windsurfing, skiing and photography.

Villa Alba continued

Even worse damage has been caused by time and weather. The house, still owned by Mount Royal Hospital and formerly used as a nurses' home, has been uninhabited for some time. The roofing is inadequate, resulting in water literally running down the inside walls. In the hallway, the exquisitely painted ceiling papers are sloughing like discarded skin. Paper, originally applied with a water based glue, hangs in strips.

In the ballroom, chunks of gilded cornice have fallen because of the dampness.

There is hope for Villa Alba due to the considerable efforts of the Villa Alba Preservation Society and the newly formed Kew Heritage Committee. The \$2,437 raised at the open day will go towards restoration and Heritage Committee money has been released by the Ministry for Planning and the Environment for thorough repair of the roofing. Even so, much more is needed.

Cr Jill O'Brien, chairperson of the Kew Heritage Committee, sees Villa Alba as a top priority. She is not daunted by the task ahead:

"Villa Alba is not only a part of Kew's heritage, but of the nation's heritage as well. Its interior decorations are without doubt, of the highest order.

"We are very pleased that the state government has accepted the Villa Alba Preservation Society's submission that the mansion become part of the government's proposed regional museum. As part of this multi-campus institution, Villa Alba will house the museum of trades and crafts.

"Not only will there be displays of Victorian tools and artifacts but there will be demonstrations of how to restore old houses as well."

Cr O'Brien said that moves were afoot to form a "Friends of Villa Alba". Anyone interested in becoming part of such a group should write, care of "The Friends of Villa Alba", to the Municipal Offices, P.O. Box 42, Kew, 3101.

KEW NEEDS FULL DAY CARE

It certainly does!
My mum can't find
child care for me.

join us in planning for our new centre.

ring Mary
AR 661 7854

KEW FULL DAY CARE CENTRE
INCORPORATED

Holiday program

The **School Holiday Program** will operate between 8am and 6pm Monday to Friday at St Paul's School in Fernhurst Grove, Kew.

The **Life. Be In It.** trailer will be visiting local parks daily between 10am and 12 noon and the **Traffic School** will be open daily from 10am to 3pm.

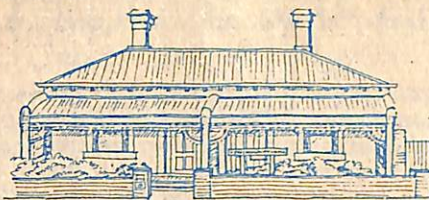
A **Teenage Program** for 11 to 14 year-olds will operate.

For details, contact the Recreation Coordinator, Carolyn Graham, on 862 2466.



KEW COMMUNITY HOUSE

Co-Ordinator: Rhonda McCaw



6 DERBY STREET, KEW, VIC. 3101
Telephone: 862 3126

The **Kew Community House** provides a great range of informative, educational, recreational and social activities for the community.

Recently, T.A.F.E. (Technical and Further Education) held discussions on education with a number of Community Houses, which highlighted the philosophy of informal education and personal development that we are hoping to develop.

Broadly speaking, it was felt that education is the same as self improvement and that learning includes building knowledge about things and about oneself, discovering new knowledge and becoming aware of the process of learning.

Education should be regarded as life long and is not restricted to schools institutions and pieces of paper. Assessment of goal achievement can be personal and does not need to involve exams or external tests.

The benefits of learning in a Community House include flexibility, the possibility of "trial runs", taking control of your own learning, role playing and lack of pressure.

Community Houses become launching pads!

2nd Term

Our 2nd term pamphlet will be available from the Library, Council and C.A.B. and other community groups in the week children return to school — May 26th.

Courses we will be offering include: *cooking classes, Pritiken, Microwave and International cooking, crafts and language classes, relaxation and Australian Art, communications and car maintenance.* Migrant English needs only a few more names to start up so **do** tell anyone you know who may benefit from these classes.

The Communications Course is for six weeks on Monday mornings and will be run by Jenny McGuirke. She is highly qualified in this field having training as a teacher, welfare worker and group leader. This course will cover awareness of communication and its importance to everyday living, communication skills, assertiveness, values and attitudes and conflict resolution.

Car maintenance will be held on Tuesday evenings from 17th June for four weeks. Topics covered will be:

- what is under the bonnet;
- maintenance procedure;
- trouble shooting for common roadside problems;
- a trip to a garage is planned.

Besides classes there is always a quiet room where people can have a cup of coffee and read, listen to the radio or help Rhonda with office tasks.

Have a good holiday and see you at the House in Term Two.

Rhonda

In praise of Kew!

Sophie Dougall, an HSC student, wrote enthusiastically about the former "Youth Page" and felt inspired to make a contribution. Here are her thoughts about living in Kew:

Kew

*Living in Kew,
The worries are few,
The facilities are great,
Especially with my mate!
There is the library*

*and the cemetery
and lots of parks where to play,
I like to go there every day.
I am glad I live in Kew,
ARE YOU?*

Youth Centre

*Youth Centre,
Fun, entertaining,
Lots of great activities,
I really enjoy being there,
Youth Centre.*

Elysium Ensemble in Kew

The **Elysium Ensemble** will perform a concert of baroque and classical music at St Paul's, East Kew, on May 24th.

Kew resident, Greg Dikmans, director of the ensemble, plays the flute and oboist, Geoffrey Burgess, who is coming from London for the Melbourne Organ and Harpsichord Festival, will join the group for the evening.

Other members of the ensemble are Julie Hewison, on violin, Miriam Morris, on cello, Robert Clancy, on theorbo and harpsichordist, John O'Donnell.

They will play the music of Couperin, J.S. Rebel, J. Haydn and J.C. Bach.

All the musicians are highly regarded and talented exponents of baroque instruments. The concert promises to be an exciting and lively evening's entertainment and it is hoped that a second concert will be arranged in September.

See **Dates** on page 2 for further details.



KEEPING YOU INFORMED

All of us hope that we will never become the parent of a handicapped child or have a close family member fall victim to a disabling disease. If this does occur, the first reaction is often "Why me?" or "Why my family?"

It often helps if you can share your feelings with others who are similarly affected.

For almost every human dilemma there is a support group, and your Citizens' Advice Bureau has information on a wide range of such organizations. As well as sharing, you gain access to the latest developments in coping with the distress.

The Kew C.A.B. is located in the Kew City Hall directly opposite the library and is open Monday to Friday from 10am to 3pm. Drop in or ring on 861 5244.

Kew High: a student centred school

Kew High School is a community of 620 students and 50 teachers. Since it was founded in 1963, the school has reflected the changing social composition of Kew.

Today, Kew High attracts students from as far away as Doncaster, Reservoir and Glen Waverley. Some students come to Kew because it has become a family tradition to go or they may be attracted by specific programs.

The broad mixture of background is evident in both the teaching staff and the student population. The school prides itself on its ethnic diversity and the rich contribution this makes to school life. There is a strong language program, with French, Greek and Italian being taught at most levels.

School philosophy

What is Kew High's educational philosophy? Principal, Ian Collis, summed it up: "We let everyone have a go."

"At Kew, we encourage students to stay on until year 12 so that they have every chance to develop their intellectual potential."

"At year 12 they can choose between the School Tertiary Certificate or Higher School Certificate courses. Our HSC program offers a wide variety of subjects and students who completed HSC last year have gone on to study medicine, science, engineering and arts," he said.

Student responsibility

Ian Collis was also proud of the school's record in encouraging students

to take responsibility and participate in the decision making process. Students are on the School Council, the Curriculum Committee and the Student Welfare and Discipline Committee.

"Most of these representatives are girls — they are the ones who are taking the initiative in this area," he said.

There is also a Student Representative Council which includes one member from each form at each level.

Innovative program

This year, an innovative semester-based unit system has been introduced at year 10.

"Students have the opportunity to experience every part of the curriculum and there are numerous choices," said Mrs Emmy Oakley, Year 10 Co-ordinator.

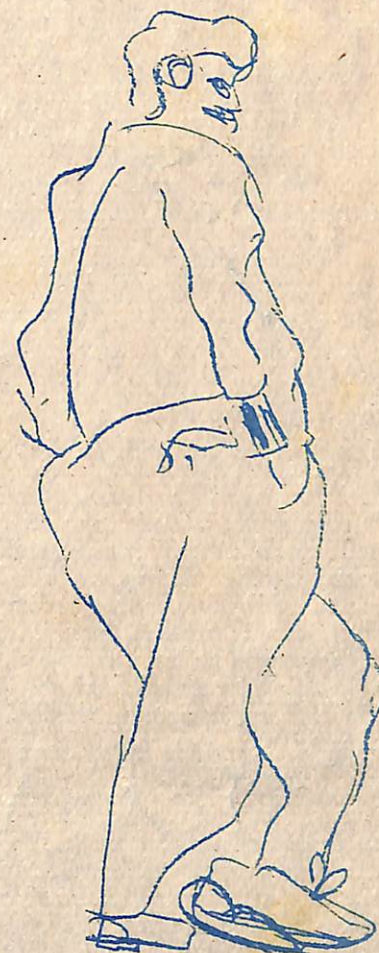
"For example, maths is divided into practical, standard and intensive. Students opt for one of these, with the advice of their teachers. Computer science is taught as part of the maths curriculum."

"Students also study english, history, geography, the performing and creative arts. As every student has an individual program, motivation is very high," she said.

There are standard courses offered in years 11 and 12 and years 7-9 have a core subject plus elective system.

Specialities

Kew High has a well equipped gymnasium, opened last year and a specialist gymnastics teacher, Jill



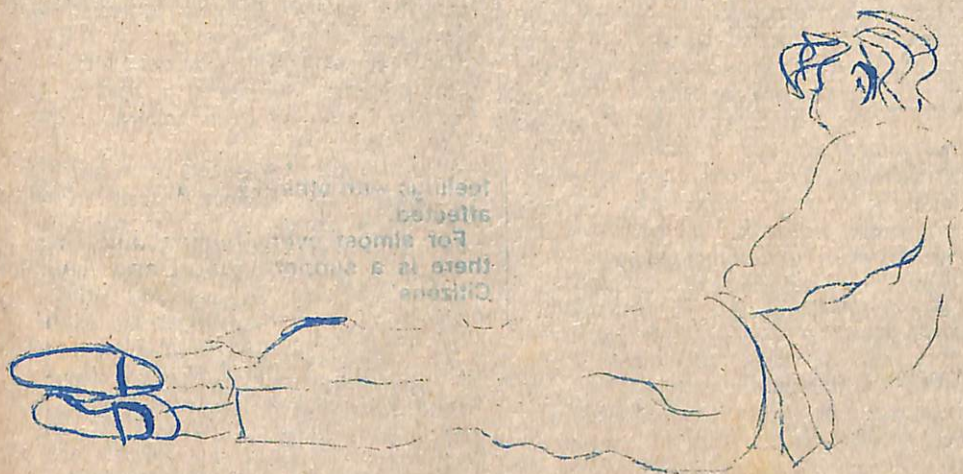
Wright who judges gymnastics at world championship level. There are two specialist drama teachers and the school has its own theatre and library.

Both the gymnasium and the theatre are available for community use.

Other specialist teachers offer music, drama and careers and the school is soon to have a Chaplain.

Kew High is a student centred school with a committed staff, over 25% of whom have been there for more than 10 years. It provides a caring and stimulating learning environment with particular attention being given to students at year 7. The Transition Officer, Mrs Susanne White, liaises with all feeder primary schools, to ensure that students are well prepared for secondary school.

Kew High will be holding an **Open Day** on Wednesday, April 30 between 2.30pm and 8.30pm. For information or enquiries, contact Mrs White on 859 8652.



Life drawings are by year 10 students and are the results of two minute poses.

Ramblings of Kew's last cowboy

Part 2 of a series by Bill Stent

The Glass Creek area and Hays' farm used to be a veritable Eden of birdlife. In the Springtime at sunrise I have counted up to 30 species of birds. The Pallid Cuckoo or Brainfever Bird, so called for its plaintive insistent call, and the Laughing Jackass were prominent, as was the Butcher Bird with its melodious rich notes. The Mudlarks had their mud nest in the gum tree near the cow shed, the Willy Wagtails nested over the creek in the willow trees, the Teal and Black Ducks were on the edge of the creek in the furze bushes. The Reed Warblers, Tomtits, Goldfinches and Silvereyes were in the shrubbery, not forgetting the restless little Blue Wrens with their dun coloured harems. The Rosellas nested in the big gum tree near Newberry St where also the Sparrow Hawk and the Blackshouldered Kite made their base. The Magpies nestled in the gum trees further down. The Diamond Sparrows had little burrows in the creek bank for their nest. Once I saw a tiny Chat feeding a young Cuckoo about four times its size.

The Skylarks during the day were a delight to the children. They would fly singing and spiralling upwards and then suddenly, closing their wings, drop silently like a stone to earth. There were also Plovers, Blue Cranes, Quail, Wattle Birds, Robin Red Breasts, Crows and the occasional flock of Ibis and of course the Blackbird and Thrush songsters. Colonies of little Fire Tails and Bell Birds still exist around the billabong at Burke Rd Bridge.

Platypus, eels and fish lived in the creek. After the war, the proliferation of Service Stations hosing down their forecourts into the streets led to the contamination of the creek until only rats remained. With tighter environmental controls and the Council beautifying the creek and Hays' paddock the native birds are slowly returning.

After obtaining the lease of Glass Creek, I was able to increase my herd. I bought some extra cows at the Croydon Market and, alongside the Church of Christ tennis courts at the bottom of Leason St, had a nice galvanised-iron feed house with a wooden floor erected. The cowshed adjoined it.

At this time my good neighbour moved from Kew, but Longstaff St was rapidly being built up and one of the new arrivals, who had been brought up in the country, willingly took over the arrangement. The herd gradually built up to ten,



Bill Stent with some of his herd

although we only milked a couple. I used to obtain day-old calves from the Asylum to be fostered by a cow which already had a calf. The method was to tether the calves together with a 3 feet chain so that, much to the cow's annoyance, when her calf when to suckle, the foster calf was alongside it. In about three days the cow would become reconciled to this exploitation and the calves would grow to very nice vealers.

The keeping of cows had its ups and downs but, generally speaking, I enjoyed the whole time. Once I was disgusted. At the time I had three cows with three-month old calves. At dawn, when I went down to milk, I found the cows with almost bursting udders and alongside the cowyard the heads of the three calves. I had busy mornings milking the extra cows until I was able to obtain day-old calves to help me out.

I was on good terms with the Asylum warders who were in charge of its dairy and we exchanged experiences, humorous and otherwise. On one occasion, the warder in charge of the milking handed me a bottle and said that it was a new calcium liquid for milk fever and that the directions were on the bottle. My eyesight wasn't as good as it had been but by moving my arms I could get the right focus. I said to the warder, 'I'm up to the stage when I'll have to get glasses.' A big patient standing nearby chipped in, 'Not bloody glasses you want, it's bloody longer arms.'

letter

Pink monster

I wonder how many people share my dislike of the pink monster clutching its truncated cane, which now disfigures the front of our City Hall.

Time has not reconciled me to this piece of kitsch. What a great opportunity we had there for a striking mural, an interesting relief of some significance. Whereas what we have is something that might be better situated on the facade of a fake healer.

On several occasions when travelling past by tram I have heard most unfavorable comments on this inartistic addition to an innocuous design. To approve it on grounds of its symbolic value, its depiction of compassion towards the old and handicapped is to mistake sentiment with usefulness.

How do other citizens see this 'gift', as bargain, blunder or bonus?

— Barbara Giles

Footy news

Kew Football Club completed a round of practice matches during March losing to Marcellin O.C. by five goals and defeating McLeod/Rosanna by fifteen goals. Coach Serge D'Angelo was pleased with the showing of several recruits — Mick Peters, Dave Wilson, Con Delius, Mick Lord and Cameron Reinke — at both these matches and stressed that if these players continued their good form several regulars may miss their spot. Amongst regulars to show out were Rob Schober, Victor Wong, Rob Presutti, John Brassil and Mick Glenister.

Unfortunate injuries to winger Shaun O'Brien, Robert Ding and Mick Peric will sideline these players well into the season.

President Ted Kelly is pleased to announce that several local firms including Estate Agents Collins, Simms, have agreed to support the Kew Club in a Community Sponsorship Scheme — full details will be released soon.

The club is in need of several teenage boys or girls (or older persons) to act as boundary and/or goal umpires or officials during match days.

Club details — Mick Bollman (H) 818 6536 (W) 63 0481 (Pavilion) 817 1118.