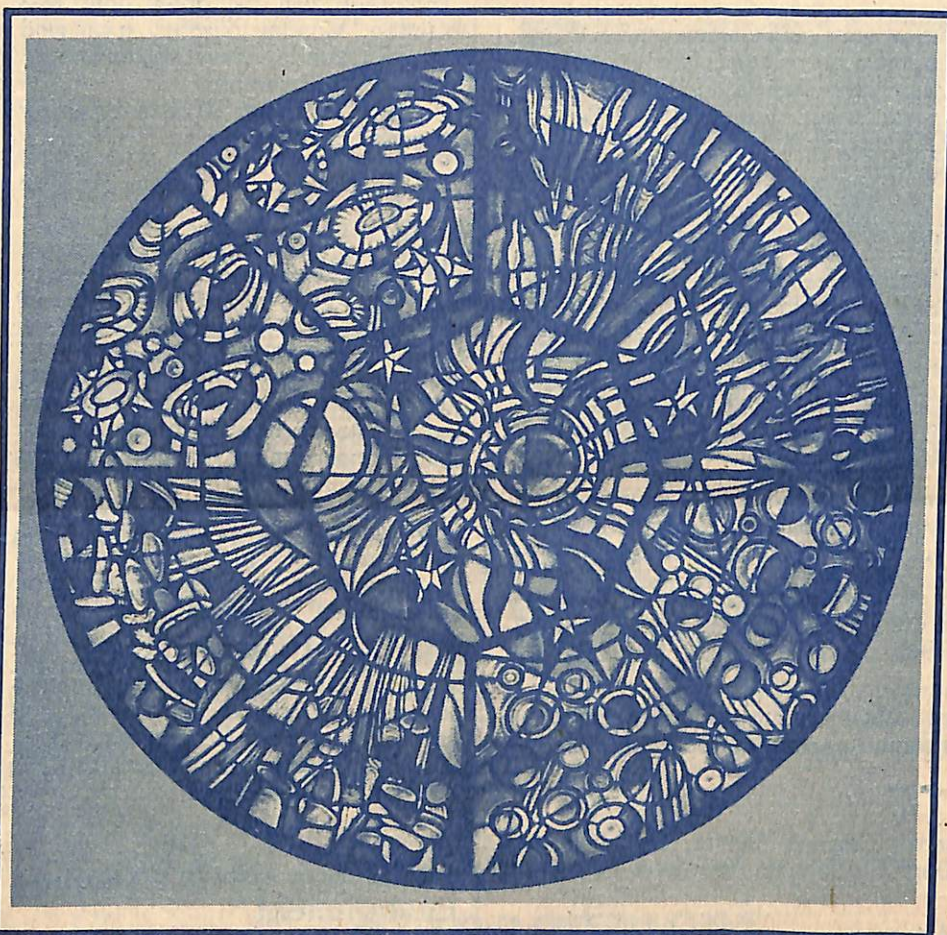


KEWRIOSITY

Municipal Offices,
Charles St., Kew, 3101

November 1985

Our Window



Alan Sumner's beautiful stained glass window **The Four Seasons** will be installed in the east wall of the City Hall in the near future.

The window, originally commissioned by a Kew timber merchant has found its way back to Kew via a roundabout route of various owners.

Alan Sumner is delighted that the window which he regards with affection will finally find a home in a public building.

The window is approximately three metres in diameter and divided into one central and four outer panels.

Clockwise from the top is autumn with sinuous lines in yellow and brown, then winter in cool blues and mauves with lines and circles suggesting rain, snow and hail. Spring follows in the bottom left quadrant with organic ovaloid shapes richly coloured and lines evoking growth. Then to the top where summer explodes with the colours of fire and the blue of sky at the height of summer.

The centre panel has a powerful image of sun, moon and stars which links the surrounding panels.

The window is full of movement and glows with colour and light. Kew is indeed fortunate that its 125th anniversary is being commemorated with this major work of a distinguished artist.

Linear Park will not affect E6

The proposal for a linear park stretching from Caulfield to Kew along the Outer Circle Railway reservation will in no way compromise plans for the E6.

Kew Council's involvement in the project has been aimed, in part, to ensure that any proposals specifically set aside that part of the reserve between High and Princes Streets for the E6 development.

Following submissions to government by Kew, Camberwell, Malvern and Caulfield Councils, a Working Party has been made up of representatives from each council, the Ministries of Planning and Environment; Transport; Conservation, Forestry and Lands; Board of Works and the Metropolitan Transit Authority.

There has also been a further deputation from the councils to the Ministers which elicited some enthusiasm for the proposed park.

Along with the other councils, Kew is committed to the principle of a linear park development and has requested that the Government implement the Outer Circle Linear Open Space System.

The councils are united in the belief that this regional asset be maintained in public ownership and developed for public recreation purposes. Costs for any land transfers should be borne regionally not locally.

Cont. P.5

inside

Dates for November	2
Budget 85/86	3
Council in Brief	4
Home Help Turns 40	5
Bill Stent Writes	7

2 Dates for November

2 Strawberry Fair at St Paul's, cnr Windella Avenue and Hale Street, East Kew. 9.30 am - 1.00 pm.

8 Kew High School celebrates Victoria's 150th Anniversary with a whole day devoted to fun activities including a bush dance with a live band, helium balloons, colonial games, an aboriginal dancer and a display of students' work in the library. All welcome to attend. For enquiries, contact Nancy Nankervis on 859 8368.

9 26th Fete and Gala Day in the grounds of The Kew Cottages, cnr Princess and Wills Streets, Kew. 10.00 am - 4.00 pm. Entertainment for children and a wide variety of stalls. Contact: D. Marchiandi on 597 0493 (ah).

Games evening to be held by the Kew Toy Library and the Monnington Parents and Friends at the Monnington Centre in Adeney Avenue, Kew at 8.00 pm. Tickets — \$25.00 double, including a complimentary drink on arrival, supper and more. Tickets available from the Toy Library, Tuesday or Wednesday, 9.30 - 11.00 am or phone 859 5050.

East Kew ALP, 8.00 pm, on cnr Hale Street and Windella Avenue. Speaker: John Halfpenny, Victorian Secretary of the Metal Workers Union, on Full Employment.

13 Hyde Park Fellowship, 2.00 pm at the Hyde Park Uniting Church, Pakington Street, North Kew. Speaker: The Rev. Wesley Lutton, on his time in New Guinea and travels in the Holy Land.

Kew Full Day Centre Incorp. Annual General Meeting, Senior Citizens' Centre, cnr High and Childers Streets. Speaker from the Office of Community Child Care.

Kew Historical Society, 8.00 pm in the Manchester Unity Hall, Union Street, Kew. Presentation of the Society's slide collection, including old homes and a re-enactment of Grimes' Landing. Contact: Philip Barnes 819 3118.

Open Afternoon Tea and concert for Kew residents over 55, at the Senior Citizens' Centre, cnr High and Childers Streets, to celebrate the City of Kew's 125th Anniversary.

14 Kew Garden Club, 8.00 pm, Senior Citizens' Centre, cnr High and Childers Streets, Kew. Speaker: Geoff Stockton on Pelargoniums.

17 Hyde Park Uniting Church, 69th Anniversary. 11.00 am — Service led by the Rev. Ron Woodgate and singing by the Senior Tongan Christian Fellowship Choir.
2.45 pm — A pleasant Sunday Afternoon. Speaker from LIFELINE and singing by the Tongan Youth Choir. Afternoon tea served.

Round robin at the East Kew Catholic Tennis Club, Leason Street, at 1.30 pm. B.Y.O. food and refreshments. BBQs available. Contact John on 859 5695.

23 Fourth Kew Scout Group, 60th Birthday Party. Cub and scout displays and activities, 4.00 pm. Spit roast 7.00 pm. All former members and families welcome. Tickets and enquiries to Robert Eva, 859 2725.

24 Kew Golf Club — Rotary — Carry On Charity Day at the Kew Golf Club. Golfing competitions (forms available at the club), bar, BBQ, food and curiosity stalls. Proceeds will go to Carry On, Kew Rotary and the Kew Pre-School Association. All welcome.

notices

Combined Charities Christmas Cards

■ The combined Charities Christmas Card and Gift Shop will this year be managed by the Paraplegic and Quadriplegic Association and will operate from the Paravics shop at 34 Cotham Road, Kew — opposite the Kew Post Office.

The shop will be open until mid December, Monday to Friday. It will also open on Saturday mornings only, the 7th and 14th December.

Contact 725 9688 or 818 1800 for further information.

★ ★ ★

Historical Society Stationery

■ With Christmas just around the corner, it's time to consider messages of goodwill. The society has stationery available, depicting some grand old buildings of Kew. A packet of six letters and envelopes can be purchased for \$2.50. These make great Christmas cards or a packet of stationery can be a gift in itself. Members and Kew residents can lodge orders by telephoning 819 3118.

★ ★ ★

Neighbourhood Watch

■ Those interested in making the area bounded by High Street, Harp and Burke Roads, East Kew, a Neighbourhood Watch area, should contact Keith Hansen on 859 2869.

★ ★ ★

Mt Scopus Offers a Caring Environment

■ Mt Scopus College offers a full-time three and four year old kindergarten program and primary schooling from prep to grade two.

It is a small school which ensures a secure environment, beneficial both educationally and socially. There is an excellent pupil-teacher ratio.

Applications for 1986 are now open. Contact Jenny Wright on 861 5307.

★ ★ ★

Raffle

■ The winner of the Pakington Street Kindergarten, North Kew mid-year raffle was Mrs Kloppman.

★ ★ ★

Continued P.8

BUDGET GO-AHEAD

Council's budget for 1985/86 was handed down in September. It maps a steady course, continuing established programs and financing a number of initiatives within the framework of an 8% rise in the general rate.

We have maintained funding to consolidate the Occasional Care Centre and the Extended Hours Kindergarten, both being services which have received a great deal of community support. The popularity of the programs run by the Community House have necessitated the provision of a second house adjoining it, at number 8 Derby Street.

Council has also allocated \$30,000 towards the cost of planting selected streets with mature trees. Council's streetscaping policy has been discussed at length in these pages and elicited much favourable response from residents. This allocation will enable us to move towards realising the policy in a significant way.



Cr Phyllis Hore

In a total capital works program of \$2.3 Million, allowance has been made for the expenditure of \$637,000 on the much needed relocation of the Library to the City Hall and for Stage One of the Recreation Centre.

Another major area of capital expenditure includes completion of the new Depot, Outer Circle Railway,

improvements, further traffic studies and traffic management works.

Implementation of traffic management recommendations for Area 5 will take place. A traffic management study of Area 4 (bounded by Princess Street, Studley Park Road and the river) has been funded.

This budget encompasses major road reconstruction projects: the final surfacing of Glenferrie Road, reconstruction of part of Cotham Road between Glenferrie and Charles Street and part reconstruction of Burke Road between Barkers and Cotham Roads.

There will be increased attention to footpath reconstruction on seven sites throughout Kew.

This budget is the first in a five year capital improvement plan for Kew. Council has made every effort to limit the general rate increase to 8% which is consistent with inflation.

We are pleased that we have managed to provide services and expand programs in selected areas within this financial limitation.



Traffic Management

Area 5 Bounded by High, Princess, Earl and Asquith Streets.

Council has adopted the traffic management scheme recommended by the Consultative Committee.

The scheme is to be installed in a temporary form for a minimum trial period of six months, but some parts of the scheme will initially be installed in a permanent form. These parts are the turn bans, the proposals in the vicinity of Kew Junction Shopping Centre and the treatment at the Eglinton Street/Derby Street intersection.

Road Traffic Authority approvals are now being sought and detailed design

carried out. It is expected that construction of the scheme will be commenced in early 1986.

Area 6 Bounded by High Street, Harp, Burke and Cotham Roads and Charles Street.

The responses to the questionnaire show that overall opinion on the proposed traffic management scheme is divided.

After considering these responses the Consultative Committee has formed the view that there is insufficient support for the entire scheme to be proceeded with at this time. The Committee, however, believes that the responses warrant fur-

ther examination of various parts of the proposed scheme and is currently doing this.

It is expected that the Consultative Committee will be reporting to Council later this year.

Area 9 — Charles Street.

Quotations are being obtained for the works in this area. These works should be commenced shortly.

Area 10 Bounded by Burke, Barkers, Glenferrie and Cotham Roads.

The works in Dean Street have been completed.

Other works in the area have been delayed as a result of a change in the proposed construction details, but should be commenced this month.

If you require further information, please contact Ian Poulter on 862 2466.

Recycling Transfer

Now that Council's recycling centre at the new Depot in Princess Street is operational, the centre at Holy Trinity has closed. The depot recycling centre is open to receive bottles, paper and cardboard from 8.00am to 3.00pm weekdays and from 10.00am to 2.00pm on Saturdays and all public holidays except Good Friday, Christmas Day and Anzac Day.

★ ★ ★

Walmer Street Appeal Quashed

The Planning Appeals Board resolved to disallow the appeal against the decision of the M.M.B.W. to refuse a permit for the erection of fourteen flats on land situated at Lot 2, Walmer Street.

This decision is seen as significant in the light of the strategy for the Yarra Valley.

★ ★ ★

De-regulation of Shared Housing

Council has determined to advise the Ministry for Planning and Environment that it supports, in principle, the proposal to seek amendment to the Melbourne Metropolitan Planning Scheme insofar as the definition "dwelling" is concerned. This would enable shared households to occur "as-of-right", but council considers that such should be conditional so as to restrict the size of shared households.

Council has indicated to the Ministry that it would like to comment

IN BRIEF

further on detailed proposals for amendment to the Planning Scheme.

★ ★ ★

Review Sought on Full Day Care Decision

Council has decided to seek a review of the Minister for Conservation, Forests and Lands' decision to disallow the use of the site in Victoria Park, abutting the cemetery, for the proposed Full Day Care Centre. This site had been chosen in preference to nine others as the most suitable for the centre.

Council will argue its case on the grounds that the site requested will not significantly detract from the amenity of the park; that the land will not be used by council but by the Kew Full Day Care Centre Committee and that a full day care centre has significant potential for public access and recreation.

★ ★ ★

Whither Willsmere?

A Victorian Parliamentary Committee inquiry into the future use of Willsmere Hospital is under way.

The inquiry has presented Council with an opportunity to reiterate its concerns and those of the Metropolitan Fire Brigade, regarding provisions for fire safety there.

Council and the Fire Brigade produced a joint report on fire safety at

the hospital. Council representatives have spoken to the committee of inquiry in an attempt to ensure that the recommendations are acted upon regardless of the future use of the building.

★ ★ ★

Cable Tram Centenary Exhibition

Council is sharing the cost of the staging of a cable tram exhibition to commemorate the centenary of the tram service in Victoria.

The display will travel the routes of the present tram system and will be in Kew library for 10-14 days next year.

★ ★ ★

Election Possible

The untimely death of Cr Murray Wood has left a vacancy in Prospect Ward. If there is more than one nomination, the election will be contested on Saturday, November 16th. Polling booths will be situated at East Kew Primary School and at Glass Street Kindergarten. Watch local papers for details.

★ ★ ★

Community Assistance Grants

Council has a small pool of funds for distribution to local self help community groups. Applications for Community Assistance Grants are invited in November. Application forms, Council policy and additional information on Community Assistance Grant funding are available from the Social Development Department on 862 2466.

Council Meeting Times for November

Tues 5th Public Holiday
Tues 12th General Purposes Committee 7.30 pm
Tues 19th Council
Tues 26th Standing Committees

Meetings are held in the committee rooms at the Municipal Offices in Charles Street, Kew, and are open to the public.

Death of Councillor Murray Wood

Councillor Murray Wood died suddenly on Sunday, October 6th. He had been a councillor for Prospect Ward since 1980, when a developing interest in community affairs led him to nominate for council.

During his five years in office he devoted himself to the expansion of recreational facilities in Kew, most notably the Hay's Park

development and the Recreation Centre.

He was council's representative on the M.M.B.W. eastern area commission, a position from which he received a considerable sense of achievement. His open and friendly manner earned the affection of those with whom he worked.

Kew Council extends sincerest sympathy to his family.

Invitation

Kew Council invites residents 55 and over to an afternoon tea and concert on November 13th between 1.30 and 4.00 pm at the Senior Citizens' Centre, corner of High and Childers Streets Kew, to celebrate our City's 125th anniversary.

Entertainment will be provided by musicians, dancers and singers from local schools.

R.S.V.P.
November 6th
Contact Pat
Throssell on
861 6995
Transport can be
arranged.

Linear Park

Cont. from Page 1

The councils have already expended considerable funds for development and maintenance of parts of the land in recognition of strong community support for retention of the Outer Circle for recreational purposes.

40 years of home help in Kew

The Home Help Service in Victoria had its origin in the City of Kew in 1943, under the chairmanship of Mrs Frances Derham, who still takes a great interest in the service, and the late Mrs Fullaton. Home help supervisor for many years was Miss Mary Plumridge.

The Kew Community Aid Auxiliary, formerly known as A.R.P. 31, feeling that the imminent danger of air raids was past, volunteered for other community work. Some helped Red Cross, some the hospitals and other busy housewives offered to care for the children of anxious wives of servicemen while they shopped, went to the pictures or church.

It was purely voluntary and did fill a great need in the community.

In 1944 it was suggested that a paid service be started as the people of Kew "did not like to accept voluntary service".

Work had been done to have the Local Government Laws altered so that Municipalities and Shires could receive Government Grants.

In November 1945 with £16 in hand the K.C.A.A. engaged its first housekeeper at £3-10-0 a week, live-in. Cost to the client was £3-10-0 per week. Pensioners paid 6d a week.

Two weeks later the Kew Council took over the employment of that housekeeper and paid an additional 7/- a day when she was "on call".



Pick up your copy from the Municipal Offices, Charles Street, Kew.



L-R: Greta Grutzner, Miss Plumridge and Mrs Derham.

The first report to Council of February 1946 showed that, although authorized to employ two housekeepers, no suitable two housekeepers were available simultaneously. From November 1945 to February 1946 they had assisted five cases.

In 1985, 208 Home Help Services function throughout Victoria. Today the Home Help Service is still designed to assist individuals and families to maximise their quality of life. The aim is to preserve health and security by the provision of social, emotional and practical support in the maintenance of daily living to the aged, disabled and families.

Specific home help is provided to assist and give relief to families caring for a mentally or physically disabled child living at home.

For any inquiries concerning Home Help Contact the Supervisor, Greta Grutzner, on 862 2466.

THREE YEAR OLD KINDER

The Argyle Road and Davis Street (unit 1) Kindergarten committees are intending to provide two weekly sessions of kindergarten for three-year-olds next year. The sessions will be two hours long and take place on Wednesday mornings and Friday afternoons. They will not be subsidised, so term fees will be charged.

The Kindergarten committee will co-ordinate the program.

For further information, contact Annette King (Argyle Road) on 817 1859 or Sally Slattery (Davis Street) on 861 8921.

YOUTH PAGE

Hi. I'm sitting here eating my lunch and I realise I've nothing planned for Youth Page. Can you believe it, last month the young people of Kew High came up with the "Are you a Dag?" contest and I, in my naive way, thought, "Hey, great, people are starting to contribute to Youth Page" and then sat back and waited for more of this new-found enthusiasm. If Susan Schwartz hadn't found me and brushed off all the cobwebs and said "Where's Youth Page?" I would probably still be there.

What's wrong? Apart from the Kew Junior Football Club and Kew High the input has been disastrous. Don't you have anything to say? Hasn't anyone done anything? Are you all the people who scored even lower than the scale in last month's article? Sometimes I wonder.

Ian.

New Publications for Youth

In the past six months two new Youth-related booklets have been produced and are available to all people. The publications relate to law and employment which are both issues that young people face and both are written in a way that is easily read.

Streetwise Comics — The Kids Legal comics project is a Redfern Legal Centre (N.S.W.) publishing project, in conjunction with Marrickville Children's Legal Centre. The project

has been funded by the Commonwealth Employment Program with funding from the Department of Employment and Industrial Affairs.

The purpose of the project is to provide practical legal information in an exciting, easy to read, comic format. It is designed to teach young people most in need of such legal information. A further aim is to stimulate young people to think critically about legal and social issues relevant to them.

Making Unemployment Work

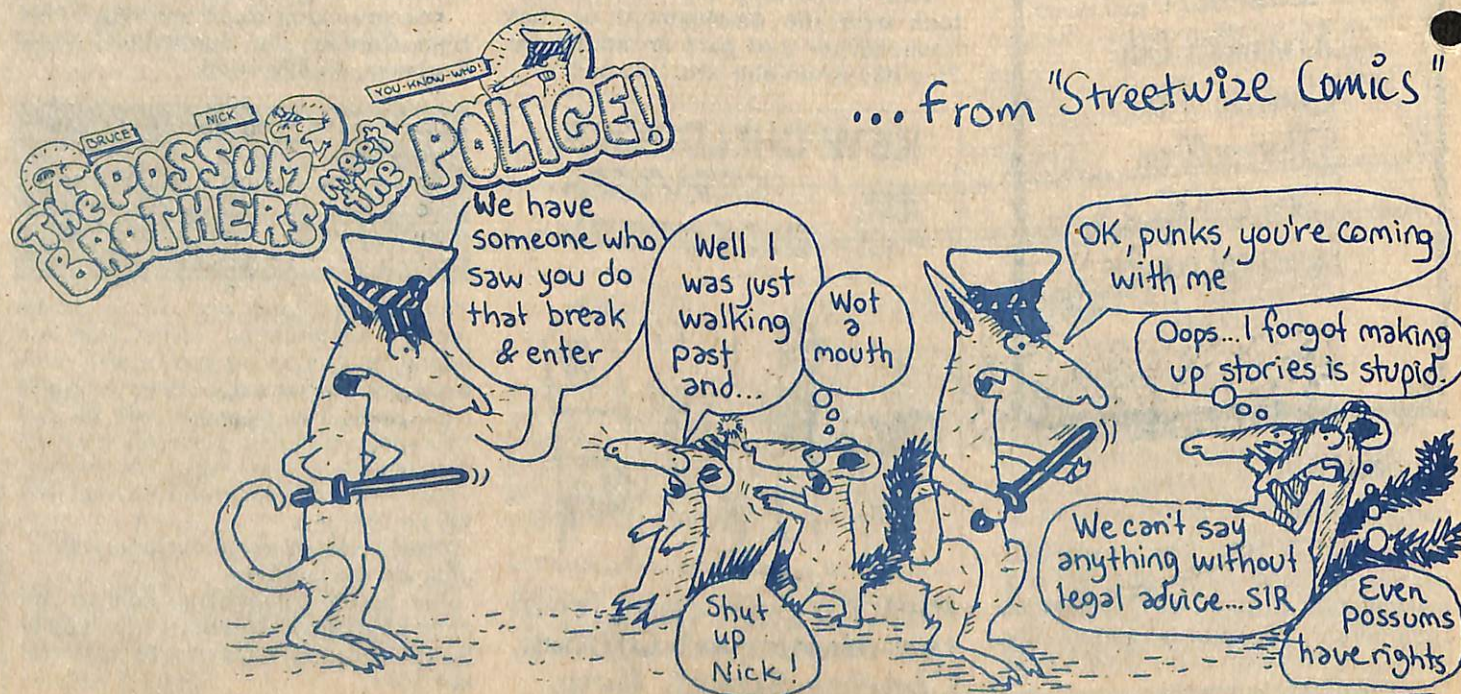
by Cheryl Paul, Night Owl Publishers Pty Ltd, P.O. Box 764, Shepparton, 3630.

Cheryl Paul wrote *Making Unemployment Work* while she was unemployed. On the dole she fought depression and the lack of motivation that an apparently

hopeless situation engenders. She responded by getting her life together. Gradually she worked out how to provide food, clothing, friendships and entertainment in ways that she could afford. Realising that this information was not readily available, she started to put it together for friends and finally this book.

Making Unemployment Work is a revealing and useful account of how to make it without a job. There is much to do while unemployed and Cheryl discusses the options, offering contacts and sources of further information where appropriate. She discusses how to survive, free entertainment, starting a business, forming a co-operative, and even going back to school to get more appropriate qualifications.

If you have a friend who is unemployed, or are out of a job yourself, this is the book for you. It explains in simple terms, how to find your way through the maze of problems that confront the person new to unemployment or who has been out of a job for some time. It offers hope to those who seem to have little employment prospects, and encouragement and valuable information to those sick of just doing nothing on the dole. As well, the book has much to offer those seeking a new direction, or wanting a more balanced way of life.



How we passed our time

Bill Stent concludes his article on recreational activities in Kew's past.

There were quite a number of concerts organised with local talent. Among them was the Highbury Grove Quartette. My memory is rather dim on the names, but Bert Nicholls and Billy Williams were two of them. Gracey Gregg the singer, and many hilarious elocutionists, including the Codner Brothers, performed.

The young chaps from the Presbyterian Church had built up a very good dance band but in deference to the elders of the church who would disallow such immoral behaviour as dancing on Church property, they called it the Kewpie Band. It thus sidestepped the issue of the Presbyterians appearing to be uncritical of the dance and incidentally they profited a little with dance engagements.

There were a number of Public and Church tennis courts which always appeared to be in use. There were also several gymnasium clubs both male and female and generally each one had an annual gymnasium display at the Recreation Hall.

In addition to the recreation activities there were regular night schools. The apprentices attended Swinburne and the Working Men's College, the office workers attended Paddy Hassetts or Taylor's College and the University students continued their lectures at Melbourne University. As well, for the

members of the Senior Cadets and Citizens' Forces there were annual camps and regular compulsory Saturday afternoon and evening parades.

The infantry paraded at the local drill hall, the artillery and light horse at South Melbourne and the naval cadets at Port Melbourne and Williamstown. I am sure that although facilities in those days were very limited we enjoyed our youthful days to the full. Also I am sure that I owe Kew and its people a grateful thank you for the happy life that I and my family have enjoyed.

Bill Stent



A Group Apprenticeship Scheme for Eastern Suburbs

The Group Apprenticeship Scheme, supported by the Association of Inner Eastern Councils, is a major innovation in Apprenticeship Training. It is a response to the increasing problems faced by businesses in training and employing apprentices for the full term, and a way of maintaining the apprenticeship intake. With a pick up in the economy there will be a strong demand for skilled tradespersons.

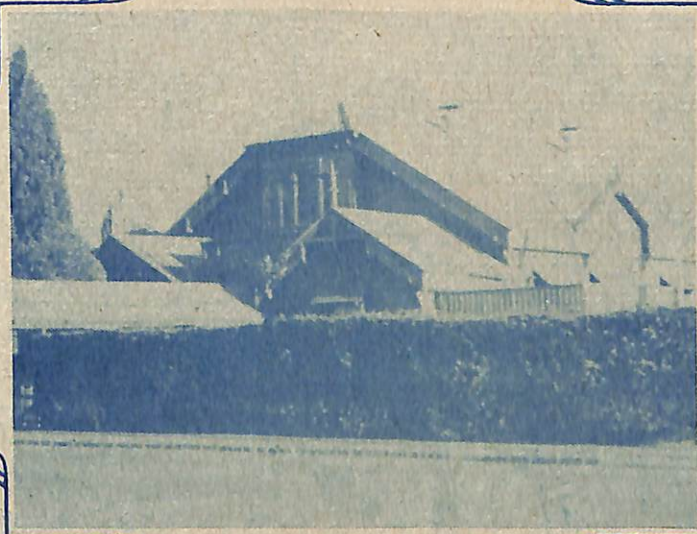
Group Apprenticeship consists of a number of apprentices in various trades, being indentured to a group employer set up by the participating businesses. The apprentices are then sub-contracted to businesses for varying periods of not less than three months at a time. Apprentices have the advantage of working for several employers during the course of a full four years training without having to transfer their indentures. They will gain greater experience and have busier working days.

Successful schemes are currently operating elsewhere in Melbourne and in the non-metropolitan area.

ADVANTAGES TO YOUR ENTERPRISE

- Employers can select apprentices according to their skill needs and capacity to train.
- Employers may adjust their apprentice workforce to suit a fluctuating workload.
- Employment costs (Workers' Compensation, Holiday Pay, etc.) are spread evenly throughout the year.
- Government subsidies (e.g. CRAFT), where applicable, can be claimed by the Group Employer and can be apportioned out to the participating employers to offset costs.
- All administrative work is taken out of the employer's hands saving time and energy.

Contact Josephine Lee on 811 0222.



The old Recreation Hall, Wellington Street, now the site of the Kew Bowling Club.

Dates and notices cont. . . .

25

Kew Daytime Garden Club, 1.30 pm, Senior Citizens' Centre, cnr High and Childers Streets, Kew. Final meeting and social afternoon; trading and display tables. Contact: Mrs Win Fearon on 859 2977.

Australian Plant Group 8.00 pm, Senior Citizens' Centre, cnr High and Childers Streets. Speaker: Geoff Carr on Plants of the Kew area. Contact 817 2255.

28

Kew Early Planning for Retirement Annual General Meeting, 8.00 pm, Kew Civic Centre, Hall 3. Speaker: Mrs Margaret Wells on her cycling tour of China and Inner Mongolia.

The Rheumatism and Arthritis Association of Victoria, 10.30 am, Senior Citizens' Centre, cnr High and Childers Streets. Speaker: Ms June Southwell on the Report on the Conference of the International League against Rheumatism. End of year party will follow. Contact: 862 2021 or 818 4644.

Room For One More?

■ Do you have a spare room? Swinburne students require a wide range of housing for the 1986 academic year. Full board is particularly in demand, especially for first-year students from the country. Offers of self-contained room only and shared accommodation are also welcome. For further information call the Student Housing Office on 819 8541 or 819 8445, or Swinburne Information Office on 819 8444.

★ ★ ★

North Kew Tennis Club

■ Are you interested in playing tennis? New members most welcome at N.K.T.C.

All members, friends and visitors are invited to Social Tennis Days on the first Sunday of each month at 10.30am — 3rd November, 1985; 1st December, 1985. Barbecue facilities available.

President: Ken McDonald 861 8875.

★ ★ ★

Kew Young Liberals

■ Kew Young Liberals meet for discussion and social evenings. For details about events in November, contact Mark Pallett on 817 1233.

DEADLINE

KEWRIOSITY is prepared by the information officer, Susan Schwartz, and a community-based Editorial Committee. **Copy for the December issue** should reach the Municipal Offices in Charles Street, Kew by **November 3rd**.

KEW COMMUNITY HOUSE



Co-ordinator: Jo Osborne,
6 Derby Street, Kew, 3101. Phone 862 3126

Kew Community House was overwhelmed with the number of people wanting to enrol in their **Pritikin Cookery Course** and another course is being planned for the near future. Other popular courses have been **Art for beginners** and **Libby's Fresh Start** — a life be-in-it fitness program.

Places are still available in a number of courses including:

Beginners guitar
Know your community,
Xmas gift making,
Exotic cuisine.

For a course program or further enquiries contact the Community House Co-ordinator **Jo Osborne**, on 862 3126.

Kew Band in Concert

The Kew Band is to present a concert at the Dallas Brooks Hall, Monday December 2nd, "Boots 'n' Brass".

Kew Band are three times Latrobe Valley Eisteddfod winners, winners of the Victorian Bands League 'Winter' Championship and, in conjunction with the Glendell Precision Marching Team, won the last series of the 'New

Faces' show.

Guest artists for the concert: Glendell Precision Marching Team, Denis Walter, special guest appearance by the Kew Junior Band, The Glendells, Kew Band — champion quality entertainment.

Tickets available at all Bass agencies, phone 11500.



The Kew Band performing at the Footscray/Hawthorn match.