

KEWRIOSITY

Municipal Offices,
Charles St., Kew, 3101

August 1985

They danced all day

The City Hall was really jumping last month, to the buoyant music of *The Cobbers* and the dancing and singing of around 540 children.

This was the occasion of the third annual Folk Dance Festival, brainchild of the Kew/Deepdene Community Education Advisory Committee and the success of the Festival was due to their hard work and organizational skills.

Children from grades three to six at 11 local schools, including St Paul's School for the Blind and Visually Handicapped, Glendonald School for the Deaf and Balwyn Special School, participated in the Festival. Students from All Saints' School Portland, who were staying at St Paul's for a week on an exchange program to celebrate Victoria's 150th Anniversary, were special guests.

The children wore an assortment of costumes and joined exuberantly in the folk and bush dances. Seldom are so many happy faces seen under one roof.

The Festival is very much in the spirit of "growing together". Highlights of the program were the wheelchair dance, *Galopede*, performed by students from St Paul's, St Anne's School, Sacred Heart and Kew Primary, and the singing of "Frere Jacques" in a number of community languages, representing Australia's cultural diversity.

May the Folk Dance Festival go from strength to strength. Our community is the richer for it.



Elections in Prospect and Central Wards

Elections will be held only in Prospect and Central Wards on **Saturday, August 3rd.**

In Prospect Ward, **Allen Martin** and **Michael Montalto** will contest the vacancy. **Maira Jeffreys** has been elected unopposed to the vacant position resulting from Kave Cole's early retirement.

James McKenzie and **John Myers** will contest the vacancy in Central Ward.

Maree Williams has been elected unopposed to the extraordinary vacancy in North Ward resulting from Roger Streeton's retirement.

Councillors **Joe Orlando**, **Robin Saunders** and **Phyllis Tinney** have been returned unopposed to North, Studley Park and College Wards, respectively.

Polling booths will be located in **East Kew Primary School** and **Glass Street Kindergarten** for residents in Prospect Ward. Central ward residents may vote at **Glendonald School** in Marshall Avenue or at the **East Kew Uniting Church** in Normanby Road. Booths will be open from **8:00am to 6:00pm.**

Voting is compulsory. If you will be away on the day, postal votes can be obtained up until Friday August 2nd, at the Municipal Offices in Charles Street.

Failure to vote incurs a fine of up to \$20.00.

inside

Community Notes	2, 8
Council Update	3-5
Youth Page	6
Community News	6-8
Features	7
Letters	7

community notices



All notices should be typed (double spaced) or printed very legibly on A4 or quarto size paper. Please keep notices as brief as possible.

Clubs and Societies

Kew Historical Society

The next meeting of the Kew Historical Society will be held on **Wednesday, August 14 at 8pm** in the **Manchester Unity Hall**, Union Street, Kew.

A representative of the Board of Works will speak on the metropolitan parks of Melbourne such as Point Cook, Jells Park and Brimbank Park. In addition, a film will be shown of the Board's public parks.

Visitors are welcome. For further details, please contact **Philip Barnes** on **819 3118**.

Kew Garden Club

One of our most popular speakers, **Mrs Val Straughan**, will be back at **8.00pm on Thursday, 8th August**, to tell us what is happening in the world of camellias. She is sure to bring along some beautiful plants for exhibition and sale. All welcome. Enquiries **859 6086**. Venue: Senior Citizens' Centre.

Australian Plant Group

Owing to school holidays, no evening meeting will be held this month. Instead, we will visit **Karwarra Native Garden** at Kalorama on **Sunday, 18th August**. The gate opens at 2.00pm. Bring your family or friends — or share your car with other members. If needing transport or for enquiries — **817 2255**.

Kew (Daytime) Garden Club

Monday 26th August 1985: Fellow club member, **Mrs Dorothy Baldwin**, will demonstrate floral arrangements. Dorothy has a lot to show so we urge everyone to be early. We meet promptly at **1.30pm** at **Elderly Citizens' Centre**, cnr Childers &

High Sts. There will be the usual display and trading tables.

Childminding available at the Occasional Care Centre in Strathalbyn St.

Enquiries: Mrs Win Fearon, Tel. **859 2977**.

General

Feeling trivial?

A **Quiz Night** will be held at East Kew Primary School on **Friday, August 16th**. Come and play your favourite board game and have the chance to win:

- **lots of prizes**
- **a raffle donated by Harvey Phillips**
- **a banquet at the Cheng Moon Restaurant in High Street, East Kew, for the table with the highest score.**

Play will be in tables of eight, so bring some friends along too. Our lively MC will keep you entertained.

Champagne and supper will be provided and you can B.Y.O.

Where? **E.K.P.S. Junior School Hall**.

Time? **7.30 pm** with the game commencing at **8.15**.

How much for this great night out? A trivial **\$7.50** a head.

Tickets can be purchased from the School Office or you can book by ringing **859 2903**.

Kew P.N.D.

Kew People for Nuclear Disarmament meets on the third Monday of each month at 69 Strathalbyn Street, East Kew. Meetings are informal, with questions and discussion encouraged. Sometimes there is a video, sometimes a guest speaker. At the July meeting a psychologist spoke about children's responses to the "nuclear threat".

The members are friendly, supportive and **optimistic**. Do come and talk to us.

For further information about this month's meeting, contact **859 3387**.

Home security and you

Learn how to make your home safer from intrusion and violation.

There will be speakers from:

- **Your local Kew Police Station**
- **Victorian Police Neighbourhood Watch**
- **Victorian Police Crime Prevention Bureau**
- **An Insurance Company**
- **Security Device Providers**
- **Kew Neighbourhood Watch**

A film will be screened showing the trauma of home intrusion and what you can do to prevent it from happening to you.

We will be looking at the distribution of crime throughout Kew and you will be able to view the home security products and devices on display.

Date: Monday, August 5th

Time: 7.30 pm

Place: Kew High School Community Theatre, High Street, East Kew.

An invitation from the Kew Neighbourhood Watch Committee is extended to **all Kew residents**.

New number for Montessori

The telephone number for information regarding Montessori workshops, being held at 1 Myrtle Avenue, Kew, has been changed to **817 1897**.

Parents for Music

Parents for Music will be holding a Family Dance Night on Friday, August 23rd, between 7.00 and 9.30pm, at the Uniting Church Hall in Normanby Road, East Kew. It promises to be a very lively evening, with folk dancing and singing. The cost will be \$10.00 for a family, \$6.00 per adult and \$4.00 per child.

For enquiries, please contact Beth Rankin, on 859 2009. **cont. p.8**

Planning for our city's future

This is my last column in Council Update, as my term as Mayor of Kew ends on 6th August. I have welcomed the opportunity to share with you some of Council's concerns and initiatives. Your response to the column has been greatly appreciated, and has given me encouragement.

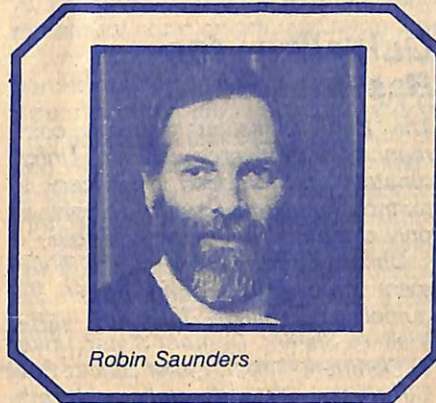
In this last column, I want to discuss the way Council is approaching its longer-term responsibility for financial planning.

Annual Budgets

Financial management in local government has historically been limited to a single year perspective. Each year, Councils are required by law to prepare a budget essentially to calculate the amount of money which is to be raised by rates.

The budget must deal with routine operational expenditure as well as capital expenditure.

If we are to manage Kew effectively, we must plan our finances over a longer term than one year. The need for longer term planning is even more critical when significant expenditure of an unusual kind is under consideration. This is now the case in Kew, where strong community support has been voiced for a recreation centre and for improved library facilities.



Robin Saunders

Kew's Five Year Plan

Over recent months, Council has put a great deal of time and energy into preparing a Capital Improvement Plan. The Plan takes a five year perspective, and gives continuing emphasis to routine tasks such as road, drainage and footpath works, building improvements and park development. It also schedules funding for both the recreation centre and the library.

The plan has been adopted by Council, subject to comment from the State Department of Management and Budget.

The Recreation Centre is to be funded over the next two years, with completion anticipated in the 1986/87 year. Council has recently appointed project managers and architects to prepare preliminary plans.

The library is to be relocated within the City Hall and draft plans prepared earlier this year will be finalised in the near future. We anticipate that the library will be operating from its new location from the second half of 1986.

Paying For It All

To meet the cost of the works, Council will be drawing funds from reserves and allocating funds from regular income. A \$4m borrowing program is proposed for the five year period and surplus land will be sold — notably in Walpole Street and adjacent to the recreation centre site in High St. Rate income is budgeted to increase at an annual rate of 8%.

The plan is necessarily a dynamic document and will be regularly reviewed by Council to ensure that the management of our finances is at all times responsible and sound.

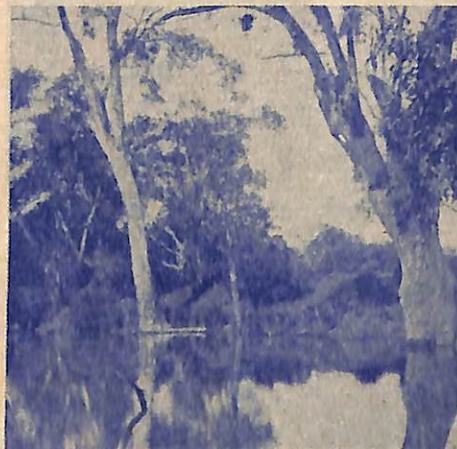
The next five years are set to be an exciting period of redevelopment for our city with the provision of new services and the upgrading of the old.

Robin Saunders, Mayor

Saving our Billabong

Council has favourably considered the recommendation to provide \$11,500.00 to finance a detailed study of the *Willsmere Billabong* and the preparation of a long-term development and management plan for the area.

Kew's Town Planner, John Waugh, and Parks and Gardens Superintendent, Peter Davies, have given the Billabong a high priority. A program



Willsmere Billabong as it once was

to rid the area of seedlings and suckers of non-native plants and replace them with species indigenous to the area has already commenced.

Many residents have been coming to the Billabong, one of Kew's natural treasures, since they were children. It is an area of calm and a link with our past. They have watched with alarm the slow build-up of silt and the resulting weed infestation and depletion in the bird population found there.

This photograph from Barnard's Jubilee History of Kew 1803-1910 will revive memories of how the Billabong once was.

Do you deliver the goods?

The **Kew Community Directory for 1986** is currently being compiled. We would like to include a listing of all businesses in Kew which home deliver, in the interests of the less mobile members in our community.

If you would like to be included in this list, please send details of delivery times, type of goods and fee, if applicable, to Susan Schwartz, Information Officer, Municipal Offices, Charles Street, Kew.

Deadline for the Directory is **September 30th, 1985**.

★ ★ ★

The Bicentenary's a-coming!

The Australian Bicentennial Authority's Local Government Initiative Grants Scheme (phew!) to encourage local involvement in the 1988 celebrations has been announced.

Council is to set up a **Bicentennial Community Committee** to plan celebratory projects and activities.

Kew's existing 150th Anniversary Committee has been asked to take on this role.

Any residents wishing to join the committee or with ideas to offer should contact **Alan Chung** on 862 2466.

★ ★ ★

Plaque for Palmers

As part of Victoria's 150th anniversary, the State Plaques Project has requested the positioning of a plaque in the Kew Library to commemorate Vance and Nettie Palmer.

The Palmers, who resided in Kew

IN BRIEF

from the mid 1940s until their deaths in 1959 and 1964, were both influential in the development of Australian writing and criticism. They were a great source of encouragement to other writers living in Australia.

The plaque was unveiled on July 25th, at Kew Municipal Library.

★ ★ ★

Guidelines for Bassinet Scheme

The Baby Bassinet Scheme commenced operation on July 4th. Unfortunately, it has been necessary to restrict the allocation of bassinets, as only a limited number is available.

Children born after the commencement date are eligible under the guidelines available from the Infant Welfare Sisters. Contact Sister Tinker at Denmark Street, Sister Bell at Peel Street and Sister Costello at Strathalbyn Street Infant Welfare Centres.

★ ★ ★

Outer circle reserve — linear park

Kew, Hawthorn, Malvern and Caulfield City Councils have made a joint submission to the Government seeking financial assistance to develop a linear park along the route of the outer circle railway.

They have advocated that the Outer Circle Reservation (apart from the section between the Chandler Highway and Harp Junction which is earmarked for the E6) should be placed under the management of the Councils in order to develop the park.

Kinder Enrolments Now!

The qualified staff at our six municipal kindergartens provide stimulating pre-school education on a sessional basis. If your child will turn four by June 30th, 1986, he or she is eligible to be enrolled in next year's program.

Kew also offers a full day kindergarten at Davis Street. Almost half the enrolments have already been received for 1986.

The level of subsidy from the State Government for pre-school education is tied to the number of enrolments. This means we need a minimum of 40 children per centre to ensure the future of our six kindergartens.

Please enrol your child as soon as possible. Ring 862 2466 for details.

★ ★ ★

Don't ring Ron

By-laws Officer Ron Cook has been receiving numerous phone calls concerning by-law infringements and stray animals in his off-duty hours, owing to the inadvertent inclusion of his phone number in the 1985 Kew Community Directory.

For advice concerning by-laws, stray animals or for engineering problems, ring our paging service on 543 6333 and you will be given the appropriate contact number.

★ ★ ★

Everything for kids in Kew

Kew Children's Services Directory is now available from:
Kew Municipal Offices,
Charles Street,
Kew, 3101.

The latest on the Occasional Care Centre

The **Occasional Care Centre** continues to attract Kew families. At last count, over **250 families** have joined the centre.

Our new Occasional Care Co-ordinator, **Margaret Campbell**, started in June. She holds a certificate of Applied Social Science in Child Care and is a qualified Pre-School Mothercraft Nurse.

Take advantage of the opportunity to leave your child in expert and caring hands for up to four hours between 8.30am and 4.30pm, Monday to Friday. Call the centre on 859 6459 and book now!



Story time at the Occasional Care Centre

Council meeting times for August

- Tues 6th:** Statutory Meeting — Election of Mayor — 8.15pm
- Tues 13th:** Standing Committees — 7.30pm
- Tues 20th:** General Purposes Committee — 7.30pm
- Tues 27th:** General Purposes Committee — 7.30pm, **COUNCIL** 8.15pm

Meetings are held in the Committee Rooms at the Municipal Offices in Charles Street, Kew, and are open to all residents.



Free trees and shrubs

Council's distribution of trees and shrubs will take place from **August 9th-18th** inclusive at the new nursery and depot in Princess St. A voucher, which entitles you to two plants of your choice, was included with your rate notice last November.

We have plants for nearly every situation: native plants, exotic, climbing plants, plants for sunny or shaded positions, plants suitable for pots or tubs, quick growers and small shrubs. All of the plants will have pictorial labels showing the type of flower produced.

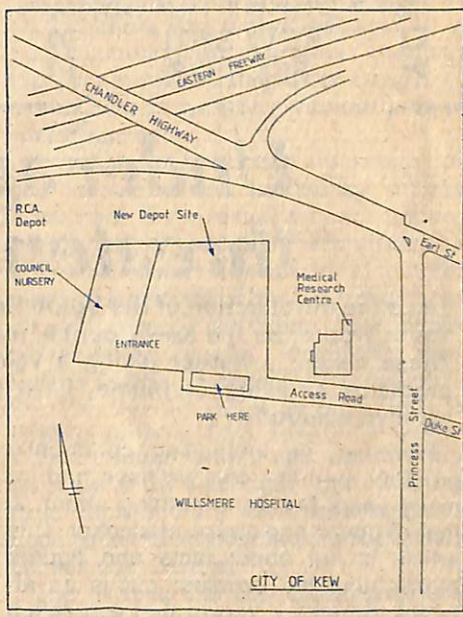
The plants available are: **Bushy Yate, Flowering Gum, Rosemary Grevillea, Yellow Bottlebrush, Weeping Red**

Bottlebrush, Hillock-Bush, Hill Banksia, Heath Banksia, Mount Morgan Wattle, Cootamundra Wattle, Glossy Abelia, Gardenia, Jasmine, Lantana, Veronica, Red-leaf Photinia, Pink India-Hawthorn and Fecoma.

All plants have been grown in 150mm (6") tubes and can be planted into the garden as soon as you get them home.

The Council nurseryman and Council gardeners along with members of the Kew Garden Club will be available to give advice on plant selection and planting. The Kew Garden Club will be assisting as part of their contribution to Victoria's 150th birthday celebrations.

To ensure the widest possible selection please come early. The nursery is open between **9.00am and 3.00pm** daily.



CARE-FORCE
FAMILY SUPPORT SERVICES




Traffic Management

Can you help?

If you are a warm-hearted person who cares about supporting families under stress and would like to share your time and skills with others, there is a place for you in the Volunteer Team at CARE-FORCE, 61A Victoria Road, Hawthorn.

By providing training and support, we help you to help others.

The next Volunteer Training Course of six sessions will be commencing in a few weeks and will be covering such topics as empathy, self-esteem, communication, confidentiality and acceptance.

Please ring and talk with our Volunteer Co-ordinator, *Amy Whittaker* (82 2523) if you have parenting and child care skills, including hobbies or crafts you might like to share with others.

Care-Force is a community agency sponsored by *St. John's Homes for Boys and Girls* and offers family support services in the Inner Eastern Region.

Area 10 Bounded by Burke, Barkers, Glenferrie and Cotham Roads

Implementation of the scheme adopted by Council has commenced. All works are to be constructed in permanent form, followed by the permanent installation of most existing temporary works.

Area 9 Charles Street

Final design work on the scheme adopted by Council is now complete, and construction will commence in the near future. The treatments proposed for this area will be constructed in permanent form as will the existing treatments in Charles Street at Barkers Road and Wellington Street.

Area 6 Bounded by High Street, Harp, Burke and Cotham Roads and Charles Street

Questionnaires are still being received and analysis is continuing. When this has been completed the Consultative Committee will review the scheme and make recommendations to Council.

Area 5 Bounded by High, Princess, Earl, Asquith Streets

The Consultative Committee met to consider the responses to the questionnaire. The Committee is currently preparing a report and recommendations to be presented to Council.

Burning times
Use of incinerators is **not permitted on Sundays or Mondays** and only between the hours of **8.00am and 6.00pm** on other days. Material can only be burnt in a **properly constructed fireplace or incinerator**.
Penalty for burning outside these hours is **\$400.00**.
Don't smoke your neighbour out!

Deadline

Kewriosity is prepared by the Information Officer, Susan Schwartz, and a community-based Editorial Committee. **Copy for the September issue** should reach the Municipal Offices in Charles Street, Kew, by **August 3rd**.

YOUTH PAGE

Under age drinking threatens our kids

Since the introduction of the Youth Resource Centre and the appointment of a Youth Worker by the Kew Council, many youth issues have been confronted. These issues, whether giving a voice to young people, helping with legal problems or living problems, have been worked through in an attempt to achieve solutions.

However, an increasing community problem, perhaps one we have had for many years but done nothing about, is that of under age abuse of alcohol. This article is not about facts and figures highlighting the problem but is an attempt to make it known that a problem exists. We cannot afford to close our eyes and not try to find a reasonable solution. Under age drinking is not the only problem faced by youth in Kew but is one of many that needs community awareness and action.

As Youth Services Officer, I am concerned that the publicans are not aware that many young people who frequent their hotels are under legal drinking age. They do not see the result of this drinking on young people who are not mature enough to understand the consequences of alcohol abuse. Hotels can close their doors at 10.00pm leaving the young people free to act in any way they see fit, as their level of intoxication dictates.

Why some young people consider alcohol as an answer for problems is a matter of speculation. Is it a status symbol? Is it a way to be better than everyone else? Is it a problem that stems from home? I don't pretend to know.

I do know and have seen a large percentage of the young people affected by alcohol become irrational, aggressive and depressed. Young people under the influence of alcohol are almost impossible to talk to in a rational way and it is all too easy for them to forget what happened the night before.

I believe that it is now time for the Kew community to begin to ask questions about under age alcohol abuse and what is being allowed to happen around Kew. Discussions between the Youth Services Officer and the local police concerning this problem are just the beginning. I see the need for the wider community to be involved in attempting to find a solution to a problem that

threatens the future of our teenage kids.

This article highlights my concerns. What are yours? If you have any comments or suggestions please ring me at the Youth Resource Centre on 861 6828.

Ian Patching
Youth Services Officer

★ ★ ★ Thank You Neighbourhood Watch

The Kew branch of Neighbourhood Watch recently made a donation of \$200.00 to the Kew Youth Centre. This money will be used to buy necessary equipment and to replace equipment worn out through heavy use. The young people who participate in the Youth Program would like to thank the Neighbourhood Watch group for their kind donation.



Can you draw?

If you can draw and would like to see your work in Kewriosity, please send illustrations and cartoons to the Information Officer, Municipal Offices, Charles Street.

We need your drawings!



Need someone to talk to?

The Citizens' Advice Bureau's trained volunteers offer an information, support and referral service to residents. Legal advice is also available.

Ring the CAB on 861 5244 between 10.00am and 3.00pm weekdays and between 7.30pm and 9.00pm for free legal advice or call into the Bureau. We are in the City Hall, opposite the library.

The CAB cares.

KEW COMMUNITY HOUSE

Co-ordinator: Jo Osborne,
6 Derby Street, Kew, 3101. Phone 862 3126



Coming Attractions at Kew Community House:

Drug Awareness Seminar

The use of illegal drugs remains one of the most serious problems facing our community today.

Those of us who have adolescent children are increasingly aware of the pressures that young people are under to experiment with all types of illegal substances including glue sniffing, abuse of prescription drugs and heroin.

As parents we need to be well informed on such issues and our guest speaker from *Addcare* in Box Hill will help us to identify signs of drug abuse, discuss treatment and therapies available and generally reassure us that there is specialist help available should such a problem crop up in our own homes.

FREE

Drug Awareness Seminar
Thursday August 1st — 8pm
Kew Community House
Ring 862 3126 to enrol

Heart Help Seminar

Coronary Heart Disease is a major killer of people in the over 40s age group.

There are many small things we can do to reduce the risk of heart disease. A speaker from the *National Heart Foundation* will show a film on heart health and discuss ways of maintaining a healthy living program.

Participants should contact the *Community House* to enrol for this free group on 862 3126.

Heart Help
Thursday August 22nd
at 1pm
Kew Community House
Free session

Gatehouse to close?

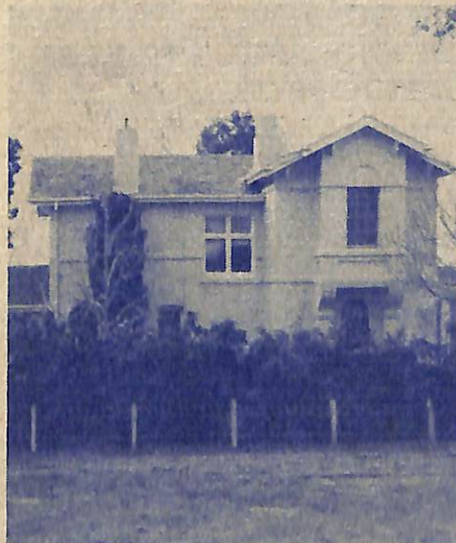
An innovative service catering for local people suffering from severe dementia faces closure. Funding for the **Gatehouse Day Centre** has reached crisis point and the Management Committee is urgently seeking alternative ways of financing the programme.

The **Gatehouse Centre** has reached crisis point and the Management Committee is urgently seeking alternative ways of financing the programme.

The **Gatehouse Day Centre** serves the Kew, Hawthorn and Camberwell areas. It provides day care for elderly confused people with moderate behavioural problems. When problems of memory and deterioration in self care are compounded by behavioural difficulties, such as incontinence and wandering, it can be difficult or impossible for relatives to find help.

The **Gatehouse Day Centre** is situated in a delightfully modernised 19th century residence, overlooking the Yarra Valley. A day programme has been specifically designed to encourage and maintain personal skills. The atmosphere is homely and friendly. Activities extend from morning until mid-afternoon, and include lunch.

The Centre has attracted much inter-



The Gatehouse Centre

state interest, the most recent visitor being Dr Tooth, Director of Mental Health in Tasmania. The **Gatehouse Day Centre** is run by a Committee of Management which was selected at a public meeting. At the public meeting last year the obvious need for more help in the care of elderly confused people was discussed.

The Centre has been operating for one year and was funded by private donations. There is now an urgent problem of finance and the Committee has applied for Government funding to meet ongoing expenses. Previous requests to the Victorian Government have been unsuccessful. If the **Gatehouse Day Centre** closes, there will be no relief during the day for local families with a relative suffering from severe dementia.

The Committee has now enlisted the services of Mr Phil Gude M.P. and Ms Prue Sibree M.P., who have willingly undertaken to intervene on behalf of the **Gatehouse Centre**.

The Annual General Meeting of the **Gatehouse Day Centre** is to be held on Thursday 15th August, 1985 at Hall 3, Kew Civic Centre at 8.00pm.

For enquiries please contact Sister **Eunice Barter**, P.O. Box 32, Kew, 3101; or phone 862 1233, ext. 538 on Tuesdays and Fridays.

Letters

Hands off City Hall!

The friends of the Kew Library should take their eyes off the City Hall, which performs a very useful service in this community, and even nationwide at times.

The Kew Library is quite adequate at the present time, and will remain so for some time to come.

However if the desire for a larger premises is too great to contain, then perhaps the walls of the present premises could be moved out, to the north, to the west (a long way), and even to the south.

Alternatively the Kew Council could acquire a property opposite the Municipal Hall in Charles Street, and erect a suitable library thereon. All this say for a couple of million dollars or so. This should solve the problem for all time and give the friends of the library a noble and consuming objective in raising funds and seeing the project undertaken.

Stan. Meyer

The Kew Philharmonic

The Kew Philharmonic Choir and Orchestra will be giving their 2nd Subscription Concert for 1985 on **Tuesday, 13th August at 8pm** at the **Paton Memorial Uniting Church, Burke Rd, Deepdene**. The choir will sing part songs including some Negro Spirituals and the orchestra will include Haydn's Farewell Symphony in its programme.

Tickets: \$5. Concession: \$3.

Enquiries: Mrs L. Stokes
817 3186, Miss M. Washfold
29 4697.

Bridge refresher course

George Rogerson, a Life Master, will reintroduce bridge players who are "out of touch" to the exciting world of Bridge, on five Thursdays, from August 8th.

The class will be held at 11.00-12.30, followed by practice, from 12.30-3.00pm. We will cover no trump bidding and play, suit bidding and play, defensive bidding, pre-empt and slam bidding.

The class will be held at the Melbourne Bridge Centre, 30 Cotham Road, opposite the Post Office and upstairs from Majestic Travel.

For enquiries, contact 862 1449 or 859 8336.

Kew Toy Library Open Night

If you would like to know what a Toy Library is and how it operates, join us at the **Monnington Special School in Adeney Avenue, on Wednesday, August 7th, at 8.00pm**.

Our guest speaker will be psychologist, **Monica O'Kelly-Collard**, who will discuss **Managing Children's Behaviour**. Monica has had extensive experience with pre-school children and is a mother of three.

Supper will be provided, so we look forward to meeting you.

Kew Family Planning

Kew's Family Planning Clinic is situated at St. George's Hospital and operates on Wednesdays after 1.00pm. Advice is given on all forms of contraception and fertility problems and referrals will be provided when necessary.

To make an appointment, ring 80 1273 between 9.00 and 3.30 from Monday to Thursday and between 9.00am and 12.30pm on a Friday.

community notices continued

Friends of Kew Library

Participate in helping our library grow by joining the Friends. We recently presented a petition to Council with over 1800 signatures, requesting that the library relocation be given priority.

Membership fees are small: \$10.00 family, \$8.00 regular and half these rates for pensioners and students.

Application forms are available at the library, or by telephoning 859 6415.

Our next function will be on Monday, September 9th. We will visit the Victorian State and Latrobe Libraries where the work of Kew writers, Vance and Nettie Palmer, will be exhibited.

We plan to have a book sale in October and would appreciate book donations. Proceeds will be used to buy items for our Library.

Free English classes

Daytime class

Free adult Migrant English Classes are being held at the Infant Welfare Centre in Denmark Street on **Mondays** between 9.45 and 11.45am except school holidays. The classes are part of the Adult Migrant Education Program and for enquiries, please ring 817 3803.

Evening Class

Free adult migrant English classes are being held every **Monday** and **Wednesday** between 7.30 and 9.30 pm at Kew Community House, 6 Derby Street. There is no need to book — beginners and advanced are catered for. Enquiries: 862 3126.

Studley Park Progress Association

The Annual General Meeting of the **Studley Park Progress Association** will be held on **Monday, August 5th, at 8.00pm** at the I.E.C.D., 4 Madden Grove, Kew.

Guest Speaker: **Sir Rupert Hamer**.

Subject: **Yarra River Development**.

All Kew residents are cordially invited to attend.

Politics

Labor Party

Pursuing this year's theme of unemployment, the East Kew branch

of the Labor Party will have two speakers. They are **Brian Cowdrey** and **Cathy Oddie**, and they will discuss the **Older Unemployed** and the **Hidden Unemployed**. The branch meets at St. Paul's Church Hall on the corner of Hale St and Windella Ave, East Kew, at 8pm on August 12th. Interested persons are welcome. Enquiries 859 6494.

Religious notices

Hyde Park Fellowship

Once again we invite all who would care to join us in Fellowship. We will be meeting on **Wednesday 14th August at 2pm** at **Hyde Park Uniting Church**, Pakington Street, North Kew.

This month we will see slides of faraway places, as Mr and Mrs Skilbeck will be sharing part of their holidays with us.

As usual afternoon tea will be served after the meeting.

Support Groups

Rheumatism & Arthritis Association of Victoria

Kew Arthritis Group will hold their next meeting on **27th August, 1985** at **10.30am**.

Venue: No. 3 Committee Room, Kew Civic Centre.

Speaker: Rosenberg Shoes who are specialists in footwear especially arthritics.

Visitors welcome. Morning tea served.

Contacts: President 862 2021, Secretary 859 8335.

Kew Early Planning for Retirement

At our quarterly meeting, **Mr Ken Green**, a retired architect and currently a tutor with the Council of Adult Education, will present an illustrated talk on "Housing in Retirement". This will be followed by discussion and question time.

This topic should be of great interest so please join us and bring a friend. Non-members are most welcome.

Venue: Kew Civic Centre, Hall 3

Date: Thursday, August 22nd

Time: 8.00pm.