

KEW RIOSITY

Municipal Offices,
Charles St., Kew, 3101

July 1985

Kew Safeway Expansion

A bold proposal to redevelop Safeway and the car parking area north of Kew Junction is currently under consideration by Council.

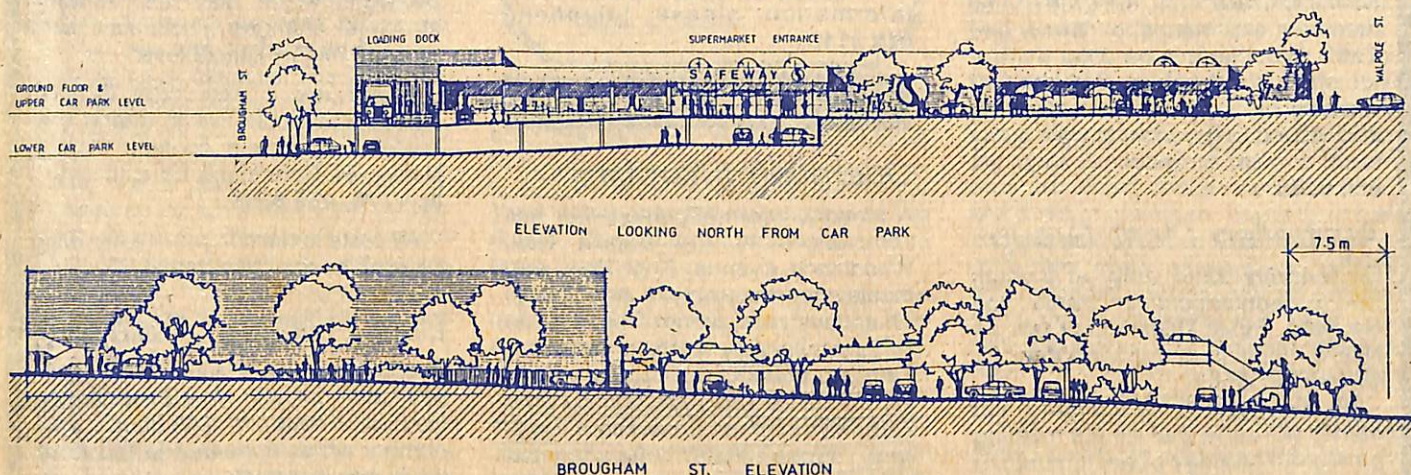
The plan involves doubling the size of Safeway and building a two-level car park over existing car parks — increasing the number of car spaces by 120 and improving access from both Brougham and Walpole Streets.

The Mayor, Councillor Robin Saunders, spoke of the plan generating much interest.

developers would construct the pedestrian mall, the car park and public toilets at their own cost. The extensive land-

entries and exits to the supermarket car parks, levels of congestion in Brougham Street should be reduced."

Plans and a model of the proposed development will be displayed successively at Safeway and the City Library over a four-week period during June and July. Council will decide whether to support the proposal at the end of the display period.



Perspective of Kew Safeway extension and car park.

"A feature of the proposal is a landscaped pedestrian mall along the rear of the shops fronting High Street. The paved and tree-lined walk-way would encourage traders to enhance and develop their backyards so that they become, in effect, attractive entrances," he said.

The Safeway extension would double the variety of items stocked in the store and would include public toilets. It would be landscaped to a high standard to be in harmony with the surrounding streets, properties and facilities. It has been suggested that the Brougham Street entrance to the carpark be planted with large trees which would form a canopy softening the lines of the building. Such trees could also be planted in the south side of Walpole Street to strengthen the relationship between the shopping centre and the residential area.

Councillor Saunders added that the

scaping is also at the cost of the developers.

"This development could revitalise the area. It will dramatically improve the amenity and appearance of the centre and give an impetus to local trade. The expansion coupled with improved pedestrian access and an inviting environment should provide an increased variety of goods in an attractive setting and bring people back to the Junction," he added.

Councillor Saunders said that close attention had been given to the traffic implications of the proposal and that extensive surveys conducted in Walpole and Brougham Streets indicate that no traffic problems will result at either of the access points to the car park or in local streets.

"In fact," he said, "with redesigned

inside

Community Notes 2,
16

Council Update 3-6

Youth Page 11

Community News
11-16

Features 12-15

Kew Heritage Survey
7-10

Letters 16



community notices

All notices should be typed (double spaced) or printed very legibly on A4 or quarto size paper. Please keep notices as brief as possible.

Clubs and Societies

Kew Garden Club

Have you a streak of exhibitionism in you? Here's your chance. At the General Meeting to be held at 8.00pm **Thursday, 11th July** in the Senior Citizens' Hall, the Club invites members and friends to "**Show and Tell**". Whether it is an objet d'art or an objet d'artichokes, delightful or dreadful, as long as it is interesting and related to gardens, bring it along for all to see. All welcome. Inquiries **859 6086**.

Australian Plant Group

On **Monday 22nd July**, at 8.00pm the Superintendent of Parks and Gardens, **Peter Davies**, will talk on Native Plants in and around Kew. Inquiries **861 9484**.

By now, most of our members and friends will know that we are meeting on the 4th Monday of each month in the Senior Citizens' Centre, Cnr Childers & High Streets, except in August. Watch for the next Kew-riosity and news of our August activity.

Kew (Daytime) Garden Club

Native Daisies by **Mrs Judy Barker** on **Monday 22nd July**. Our speaker will have a large number of exhibits, so members and friends are urged to be seated **before 1.30pm**. We meet at Elderly Citizens Centre, corner Childers and High Sts. There will be the usual display and trading tables, childminding available at the occasional care centre in Strathalbyn St. Enquiries: **Mrs Win Fearon** Tel. **859 2977**.

Kew Historical Society

The next meeting of the Society will

be held on **Wednesday 10 July** at 8.00pm in the **Manchester Unity Hall**, Union Street, Kew.

Mrs Valda Fouvy of the Kew Philharmonic Society will be the guest speaker and she will discuss the history of the Philharmonic Society in Kew. Mrs Fouvy is a prominent local flautist and has been a member of the Society for many years.

Visitors are welcome. For further information please telephone **819 3118**.

General

Operation Friendship

A friendly, informal get-together has commenced at the Baptist Hall, Woodlands Avenue, East Kew, and meets on the second and fourth Thursdays each month from 1.15 to 3.15pm. On July 11th, outstanding Zambian preacher will speak follow- ing a musical program, and on July 25th, Metropolitan Research will pre- sent "Kitchen Flair". Afternoon tea will be served. Transport is available. All are welcome! Contact **Evelyn Wakeling** on **859 3751**.

Pre-School Music & Movement Sessions Kodaly/Orff Approach

Sessions include singing, dancing, percussion instruments, musical games and speech rhymes.

Classes are suitable for children aged two years and over and are designed to stimulate the development of musical and social skills, as well as listening, co-ordination and creativity.

For further information regarding sessions contact **Betty Frey Taylor** on **817 3044**.

Kew High School Curriculum Conference

A conference is to be held on **Friday**

July 19th and **Saturday July 20th** at the Green Gables Chalet, Warburton.

The aim of the conference is to debate curriculum change and to discuss the present years 9 and 10 system and whether alterations should be implemented. The curriculum committee is most anxious for Kew High School Parents to have the opportunity to be involved in any decisions which may lead to any structural changes which may take place at middle school level.

If you are a Kew High School Parent and would like to attend the conference, please contact: **Nancy Nankervis**, Community Education Officer, Ph. **859 8368**.

All costs to the conference are fully covered by the Department.

Better Hearing Australia

The correct phone number to ring if you wish to join the Kew Better Hearing Group is **859 8096**. The number which appeared in the April issue was incorrect.

Politics

East Kew ALP

The next meeting of the East Kew ALP will be on **Monday, July 8th**, at St Paul's church hall on the corner of Hale Street and Windella Avenue. The meeting will commence at 8.00 pm and there will be a group discussion on "Taxation".

National Party

The Kew branch of the National Party meets on the first Monday of each month. Those interested in attending should ring **819 1886** for further details.

cont. P. 16

Kew's Parklands

Kew is a city endowed with magnificent parklands. Not only do we maintain many parks, gardens and reserves for the enjoyment of residents but we have part of the Yarra Bend Park within our boundaries. We are fortunate to have this valuable area of natural bushland right at our doorstep.

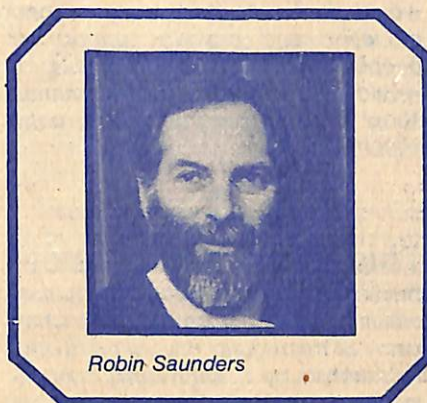
New play equipment has recently been provided by the **Yarra Bend Park Trust** at Dickenson Reserve, with a little assistance from the Council. The increased usage of the area has been dramatic, and the Trust must be congratulated on its initiative. The Trust has also recently undertaken major improvements to the car park off the Boulevard just north of Molesworth Street.

The **Yarra Bend Park Trust** is administered by Chairman Eric McCutcheon, six state government representatives and two councillors each from the cities of Kew, Collingwood and Northcote. Kew's representatives are Councillor Jill O'Brien and myself.

Yarra Bend Park is an area of regional significance yet the Trust has always lacked satisfactory levels of funding from government. Despite this, the Trust, supplemented by grants from member councils, has established a wide range of recreational facilities and ovals for the benefit of the people of Melbourne. In Kew, we have the par 3 golf course, the Studley Park Boat House and reserves which are all well used by residents.

There has been insufficient money, however, to maintain the unique areas of natural bushland in the way we would all like to see them. These areas are under assault by bone seed and other noxious weeds and by the thoughtless dumping of rubbish. Soil erosion is a problem in areas where foot tracks have proliferated.

Studley Park Progress Association is currently considering a suggestion that they might make the care of a small part of the bushland a community project. On Saturday, June 1st, they organised an inspection of the area from Dickenson Reserve to Collins Bridge and were accompanied by **Ed Thexton** of Burnley Horticultural College. Ed is



Robin Saunders

well known as convenor of "Friends of the Yarra" and has been responsible for obtaining seed from plants indigenous to Studley Park for revegetation of the Yarra Bank near Burnley. We wish the Studley Park Progress Association well in this exciting move.

Kew's own parks have recently been undergoing a process of upgrading. You may have noticed new equipment, shelters and trees appearing in our parks, and toilet blocks will soon be built in **Eglinton Reserve** and **Victoria Park**. This is all part of Council's commitment to provide diverse opportunities for residents' active and passive recreation needs.

Current works include the bicycle path and the provision of recreation facilities in **Hyde Park** and **Hay's Paddock**. The bicycle path has been funded by Victoria's 150th Anniversary Committee and has been staffed through the Commonwealth Employment Program, providing work for three young people who had been previously unemployed. The most recent section of the path winds through **Willsmere Park** and will go on to join paths already established in **Hay's Paddock**. The path has been designed to form a circuit around Kew and its major sections have been completed. It will form a link with the MMBW's plan for a cycle path along the Yarra from Prince's Bridge to Warrandyte.

Landscaping and the installation of electric barbecues is now well under way at **Hyde Park**, and play equipment is soon to be installed. The man-made

mounds have been shaped and an extensive tree planting program is taking place. Stimulating play equipment for both young and older children has been selected and there will be a comfortable area for just sitting and relaxing.

The upgrading of **Hay's Paddock** is nearly completed. Council's objectives are to retain **Hay's Paddock** as an area which provides for unstructured and structured activity on a small scale and to develop the natural and rural character of the park in contrast to the formality of the surrounding residential areas.

Great care is being taken in realising these objectives. The pavilions and park furniture recall earlier days when Kew was a village surrounded by dairy farms and market gardens. The tree planting program using indigenous species is designed to create an "away from it all" atmosphere. The park will be bordered with trees which will make it contained and protected. Special attention is being given to the billabong and creek areas with the planting of species which attract bird life. **Hay's Paddock** will be a haven for busy Kew residents.

Kew provides a number of large sports ovals for use by residents and local clubs. The cost of maintaining these ovals is very high. The Council spends nearly seven times per hectare more on keeping ovals at a good standard than it does for the remaining parks and reserves. Approximately 20% of the maintenance cost for ovals is recouped in hire fees. Rising costs are likely to cause an increase in hire fees in the next budget period. But while the ovals are well used by sportsmen, we recognise that there is within Kew a lack of facilities for popular women's sports like netball and softball.

Like our street trees, our parks, gardens and reserves are part of our heritage and must be cared for and respected. Council is committed to providing an imaginative and extensive range of recreational areas for Kew residents. We also have a commitment to support the Yarra Bend Park Trust and encourage a sense of community responsibility to enhance this beautiful area.

Robin Saunders, Mayor

We are desperate!

We are still in need of volunteer drivers for the Kew Community bus which transports senior citizens on trips around Kew. This is an enjoyable job and one which is vital in helping elderly people maintain links within the community.

The bus is a 15-seater Toyota and an endorsed licence is not required to drive it.

If you can spare some time between 9.00am and 4.30pm, Monday to Friday, please contact Leanne Evens, on 862 2466. We need you!

★ ★ ★

No vacancy

Council's Extended Hours Kindergarten in Davis Street is full! Twenty-five children are taking advantage of the stimulating program the kindergarten is offering between 9.00am to 3.30pm daily.

Enrolments for extended hours and sessional kindergarten for 1986 are now open. Hurry because places are filling fast.

★ ★ ★

Kew contributes to Housing Council

Kew Council will contribute \$1500 in "top up" funding to the Inner Eastern Region Housing Council to meet short falls in funding by the Ministry of Housing. Each of the six local govern-

IN BRIEF

ment authorities in the region have been asked to provide funds towards operating costs for 1985.

The Housing Council provides a valuable service in assessing and advising on housing needs in the region. They plan to set up a Housing Information Service for the region, which would deal with emergency accommodation and provide support for people with housing difficulties. It would also give general information about housing programs and rental accommodation.

★ ★ ★

This is an emergency

Drivers are still needed to deliver meals during the winter months when many of the regular drivers are away. This would be a short-term commitment on an irregular basis. Please help to keep this valuable service on the road.

If you would like to become an emergency driver, contact Helen Wood, on 861 7308.

★ ★ ★

Elections coming up

Would you like to be involved in the running of your City, be part of the decision-making process, to help make things happen?

Nominations for Council close on **JULY 12th**. If you intend to stand for Council, nomination forms are available from the Municipal Offices in Charles Street.

It is anticipated that municipal elections will be held in Kew on **Saturday August 3rd**. Watch the papers for information about your ward.

★ ★ ★

Assistance grants distributed

Community and Service Assistance Grants for the '84-'85 financial year were decided at the last meeting of Council. Sixteen community groups are to receive funds totalling \$6700. All these groups, which range from community resource centres and playgroups to bands and self-help groups, all provide valuable services to Kew residents.

Policy changes for the distribution of grants have been adopted by Council. The next round of grants will commence in October and further details will be given nearer to the date.

★ ★ ★

Free trees soon

Council's tree distribution program will take place in August at the new Depot in Princess Street. You will find your tree voucher, along with your tip vouchers, on your rate notice which you would have received last November.



Area 10 — Bounded by Burke, Barkers, Glenferrie and Cotham Roads

Implementation of the scheme adopted by Council will commence shortly. All new works will be constructed in permanent form, followed by the permanent installation of most existing temporary works. Final design work on the existing treatments in Wrixon Street is proceeding.

Area 9 — Charles Street Environs

Final design work on the scheme adopted by Council is proceeding. The

Traffic Management

treatments proposed for this area will be constructed in permanent form as will the existing temporary treatment in Charles Street at Barkers Road. Council's application for a 40kph speed limit in this area was rejected by the Road Traffic Authority.

Area 6 — Bounded by High Street, Harp, Burke and Cotham Roads and Charles Street

After some initial difficulties, the questionnaire on traffic management proposals in Area 6 has now been distributed to all residents. When all responses have been received, the Consultative Committee will review the scheme and make recommendations to Council. It is essential that as many peo-

ple as possible return these questionnaires to enable the Residents' Committee and Council to make an informed decision on traffic management in the area.

Area 5 — Bounded by High, Princess, Earl and Asquith Streets

A good response was received to the questionnaire on traffic management in Area 5. The Consultative Committee met early in June to review the proposed scheme and will be making a recommendation to Council in the near future.

For further information on traffic management, or any other traffic matters, please contact Council's Traffic Engineer, **Chris Fenner** on 862 2466.

Concern for residents top priority in hotels dispute

Over recent months Council has lodged two objections to the Liquor Control Commission. The first concerned the renewal of an annual liquor licence to the Prospect Hill Hotel and the second involved the Harp of Erin's application for a Liquor and Entertainment permit. In both cases Council's concern was for the effects that granting these permits would have on nearby residents.

Council's objections with regard to the Prospect Hill Hotel were aimed at eliminating the fire risk to the public, achieving an assurance that patron numbers would not be exceeded and that noise levels would be reduced and patron behaviour more effectively controlled. Incidents of anti-social behaviour by hotel patrons had been reported by residents.

At a hearing before the Liquor Control Commission an agreement between the proprietors of the hotel and the Council was reached on the understanding that the hotel would abide by certain conditions. These include that the noise emitted from the hotel not exceed State Environment Protection Policy levels; that no amplified music be played on Tuesdays and Wednesdays and that music finishes before midnight on other evenings. Sufficient security staff should be employed to ensure patrons leave the hotel quietly.

While Council is prepared to enter into agreement with the hotel, its objections have not been withdrawn and the hearing has been adjourned so that a report on the hotel's operations can be submitted to the Liquor Control Commission at a later time.

Council's objection to the Harp of Erin's permit application was based on the lack of parking facilities for the hotel's patrons and that excessive noise and disturbance to residents would result from an extension of trading hours.

The hotel had requested a permit to supply liquor and entertainment on any day except Sunday and Good Friday, between twelve midnight and 3.00am the following morning (including Sunday morning).

Discussions were held between Council, the hotel's owner and residents to try and reach a compromise solution but the negotiations foundered and the case proceeded to the Liquor Control Commission.

Both Council and the hotel were represented by legal counsel and both parties presented evidence from local residents during the day-long proceedings.

The decision of the Commission was to allow the hotel to trade until 1.00am the following morning from Monday to Thursday and until 3.00am the following morning on Friday and Saturday. Noise control conditions apply as does the hotel's responsibility to ensure that patrons do not disturb residents.

Council is to consider imposing parking restrictions in Harp Road to alleviate problems currently being experienced by residents. Those living in the vicinity of the hotel have been invited to report any complaints of negative behaviour in writing to council officers, the hotel and the police.

Friends of Kew Library Take Action

On Tuesday May 28th a delegation from Friends of Kew Library attended the General Purposes Committee of Council, and presented its views on the present state of the Library as regards space. Its president, Mr E.J. Flynn, and a committee member, Mrs B. Fincher, spoke.

They pointed out:

- after roads, footpaths and garbage collection, the City Library is the most intensively used facility provided by the Council for residents. Approximately 16,500 people hold lender's cards and an average of 4000 per week use the Library;
- it has less than half the space recommended as minimum for the population of Kew (29,500) by the Library Council of Victoria;
- the current congestion in the Library is unreasonable.

The delegation urged the Council to put into action the decision which it has taken in principle, that is, to move the Library into the city hall. This will more than double the existing space, permit the incorporation of the Toy Library and provide a room for the records of Kew Historical Society.

The move would enable the library to extend its range of services so that it would compare favourably to neighbouring libraries.

Friends of the Library will be having general meetings every two months, the next being in August. In the Spring we will be having a big used book sale to raise money for the library. Readers are asked to save books until August and help the library in this easy way!

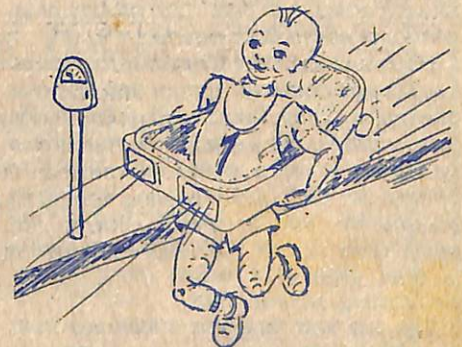
For further information, watch **Kew-riosity** and the local press or ring 859 6415.

Baby Safety Bassinet Loan Scheme, Off and Running

The Safety Bassinet Scheme is now off and running in Kew. Due to manufacturers' commitments Kew has at present only received one-third of our application with delivery of the remainder expected within the next two months.

The scheme is being administered through the Infant Welfare Centres and is available to Kew residents and established users of the Centres. Bassinets available under the scheme are suitable for use by infants up to six months of age.

For further information regarding the scheme contact the Sister in Charge of your Infant Welfare Centre.





Neighbourhood watch



Keeping an eye open

Neighbourhood Watch aims to prevent people becoming victims of criminal activity, particularly burglary. In Kew the Neighbourhood Watch area is bound by Harp, Normanby, Cotham and Burke Roads. The area is divided into 20 zones and each has a zone leader who distributes monthly newsletters and circulates engravers for property identifica-

tion. Zone leaders also visit residents who have had the misfortune to suffer theft or property damage.

Operation Identification

The major prevention method being adopted in the area in co-operation with the Police is "Operation Identification". The engraving of valuables with a driving licence number discourages theft and marked items assist Police in returning stolen goods to the owners. Electric engravers and stickers warning that property has been marked have been dis-

tributed throughout the Neighbourhood Watch area.

The Kew Police have two engravers that are available to all Kew residents for overnight use. There is no charge for this service.

Neighbourhood Watch Works

Since it began last year, Neighbourhood Watch has had a big impact on reducing local crime. This is demonstrated in the crime report for April provided by the Police collators:

| Crime | N/W area | Kew |
|-----------------------------|----------|-----|
| Burglaries: Day | | 8 |
| Night | | 26 |
| Wilful and Criminal Damage | | 8 |
| Drugs | | 0 |
| Assaults | | 8 |
| Wilful and obscene exposure | | 0 |
| All other (minor) | 1 | 8 |
| Thefts | | 17 |
| Theft of Motor Car | | 9 |
| Theft from Motor Car | | 18 |
| Recovery of Motor Car | 2 | 2 |
| | 3 | 114 |

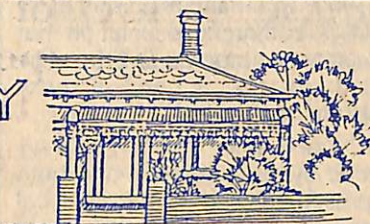
If you are aware of suspicious behaviour in your area, don't hesitate to ring the Police on 11444 at any time. Even if no arrest is made, the Police do not regard these calls as a waste of time. It has come to our attention that the St George's hospital car park has a high incidence of thefts. Do lock your car when you leave it anywhere and be careful not to leave any items in the car which could attract thieves.

Home security meeting

This year, the home security meeting will be held on **August 5th at 7.30pm at the Kew High School Community Theatre**. All Kew residents are welcome to attend.

Kew Police Chief, Inspector Cartwright, and members of the Crime Prevention Bureau will give advice on home security and there will be a display of security devices. The Commercial Union Insurance Company will also be present and a short video on the trauma of home intrusion will be shown.

KEW COMMUNITY HOUSE



Co-ordinator: Jo Osborne,
6 Derby Street, Kew, 3101. Phone 862 3126

What we are about

In Victoria there are over 100 Community Houses. Each one is tucked away in its respective neighbourhood and each is playing a special part in the lives of the people who become involved with the house.

Community Houses under their particular brand of philosophy attempt to be in touch with the local communities they serve. They identify local issues and needs and then respond to them.

The response may take the form of organizing a self-help group, social event or a class to teach people new skills. Community House members like to have an ear to the ground at all times to pick up ideas about what is needed and are always anxious to hear from groups or individuals about their needs.

People using **Kew Community House** vary in age between school age and late seventies. They bring with them skills, joys, worries, life experience, happiness and most of all a sense of wishing to belong to their community. Visiting a community house gives people the opportunity to mix with fellow members of their area in a warm friendly non-threatening environment.

The fun and laughter which we hear coming up the hallway during class-time lets us know that when people get together for whatever reason it is possi-

ble to relax, be themselves, learn no matter what their age or ability and achieve something for themselves.

This small poem written by a participant in one of our groups sums up very well the essence of what we are about.

An article in the local paper started it off.

"Kew Community House"

I noted the address and thought "great for my old mum to visit".

Tried to get in touch, but it was the holidays.

Instead, met a man who ran the writing group at the House and thought

"I'll go there instead of mum".

Now here I am writing poetry at the House.

Mum, you've done it again given birth to my poetry.

Felix Carrady

Don't forget our city bush walking group. Next walk will be on **Monday, July 8th**. We will leave the Community House at 1.00pm and walk near the Yarra in the vicinity of Dight's Falls. Registration fee is 50 cents. **Come along and stretch your legs — you'll enjoy it!**

Kew Heritage Survey

Kew City Council, in conjunction with the Kew Heritage Committee and the Kew Historical Society, has commenced the preparation of a concise document describing the heritage of the City for educational and interpretative purposes.

The document, when completed, will contain a brief history and description (including sketches, photographs and plans) of those features of the natural and man-made landscape identified by expert consultants as illustrating important themes in the history and development of Kew.

Information Exchange Meeting

2 pm, Sunday 11th August 1985

Kew City Hall

*Including a short address on a subject relating
to the history and heritage of Kew.*

Please come along and bring your old photographs, land titles, construction plans and data and any other documents you have which may illuminate important themes or events in the history of Kew, for noting or photocopying.

Heritage Assets

Kew has many old houses, buildings and other structures. Only a small proportion of these will prove, upon critical assessment by experts, to be heritage assets.

Heritage assets are those features of the landscape which have **special value or significance** to the community by reason of their historical, cultural, aesthetic or scientific associations or quality. Tests of **special value** will include:

- strong association with identified major historical or development themes, events, organisations and personalities;
- integrity — excellent state of preservation of features identified with the historical period;
- rarity or uniqueness.

Some Examples of Potential Heritage Assets

1. Houses and Other Buildings

- Associated with pioneer families, important public figures, leaders in the fields of art, science, letters, etc.
- Designed by important or innovative architects or winners of architectural prizes, competitions or awards.
- Containing unique design features or being superb examples of architectural style or lifestyle of particular periods.
- Being prominent longstanding landmarks.
- Associated with the identity, image, spirit or function of the City.

2. Other Structures and Works

Other structures which relate to historical figures, events, past eras and communications activity, etc. (e.g. memorials, lamp posts, horse troughs, etc.)

3. Streetscapes

Of special interest generated by avenues of trees, bluestone kerbing, adjacent buildings with a high degree of period style and integrity, etc.

4. Sites

Of significance in respect of historical figures and events, Aboriginal culture, scientific importance, etc.

5. Natural Areas and Open Space

Of importance as wild life habitat, for natural beauty or historical significance.

6. Panoramas, Vistas or Views

Offering significant breadth/distance or important small scale views.

Nomination of Potential Heritage Asset

Your assistance in identifying potential heritage assets and providing information about them is greatly needed.

PLACE:

.....

LOCATION:

.....

REASONS FOR NOMINATION (Your views about its significance)

.....

.....

.....

.....

.....

.....

HISTORICAL INFORMATION IN YOUR POSSESSION (Old photographs, construction plans, historical documents, etc).

.....

.....

.....

.....

.....

.....

Please bring completed form to information meeting (11/8/85) or return to the Kew Heritage Committee, C/- Municipal Offices, Charles Street, Kew.

Further comment:—



"Ivy Grange", on the corner of Princess and Malmsbury Streets, is part of Kew's heritage. This drawing is from the "Hawthorn and Kew Sketchbook" written by Brian Carroll with illustrations by Arno Roger-Gernersh, available in Kew Library.

YOUTH RESOURCE CENTRE
4 DERBY PLACE,
KEW 3101.
861 6828

YOUTH PAGE

Youth Theatre a goer!

The first meeting of the Youth Theatre Committee was held on Monday 27th May at the Youth Resource Centre. Office-bearers elected were: Chairperson — Kelly Hutchinson Secretary — Myffy Vaughan-Smith Treasurer — Peter Johnson P.R./Y.U.K. Editors — Tim Fagan and Alex Chamberlain Programmer — Steve Webster

This meeting also decided the name of the Group will be the Kew Premier Theatre Company. The group is open to youth in Kew aged 12 to 25 years. You do not have to live in Kew but you

must go to school, or work in Kew to be a member. The fee is \$5.00 per year and theatre workshops will be available free to members. More information will be announced in Y.U.K. Youth Under Kontrol, the group's newsletter. It will be distributed to all schools and community groups or you can ring Ian at the Youth Resource Centre on 861 6828.

This project is an International Youth Year funded program, the initiative growing from the Kew I.Y.Y. Youth Committee.

APOLOGY

Last month I mixed up the unemployment figures. They should have read: approximately 25% of those unemployed in the City of Kew are under 20 years of age and approximately 55% of those unemployed in Kew are under 25 years of age. The total number of unemployed in Kew as of the 15th March, 1985 was 584 persons, 145 under 20, 319 under 25 years, approximately 58% male and 42% female. Sorry.

Ian

Holidays!



Some ways to avoid burning

- Leave papers out for the Salvation Army collectors or take them, along with bottles, to the Peel Street recycling Depot behind Holy Trinity Church.
- Keep old clothes and rags for the various service groups which collect them at frequent intervals.
- A simple and economical way to convert garden and kitchen waste to humus — the best food for your soil — is to compost them. Leaves, light prunings, weeds, grass clippings and kitchen waste compost readily. Save on fertilizer!
- Consider hiring a waste bin for garden refuse — perhaps you could hire one with a neighbour and share it.

If you feel you must use an incinerator occasionally, please:

- consider your neighbours;
- use only an approved incinerator which is located away from boundary fences and burnable material;
- make sure that the material to be burnt is dry and suitable for burning. It is forbidden by by-law to burn plastic, rubber and toxic materials;
- load the incinerator loosely and light it near the top;
- burn on a breezy day as close to midday as possible and do not let the fire smoulder.

For advice about incinerator and burning requirements, contact the By-laws Officer, Ron Cook, on 862 2466. Don't smoke your neighbour out!

Don't you just love it?



Learn how to paint on silk

A bright splash of colour has been added to the Junction recently, with the opening of Marie France, a shop specialising in hand-painted silk.

The vibrantly tinted silks are the products of **Beatrice D'Heucqueville** and **John McRae**.

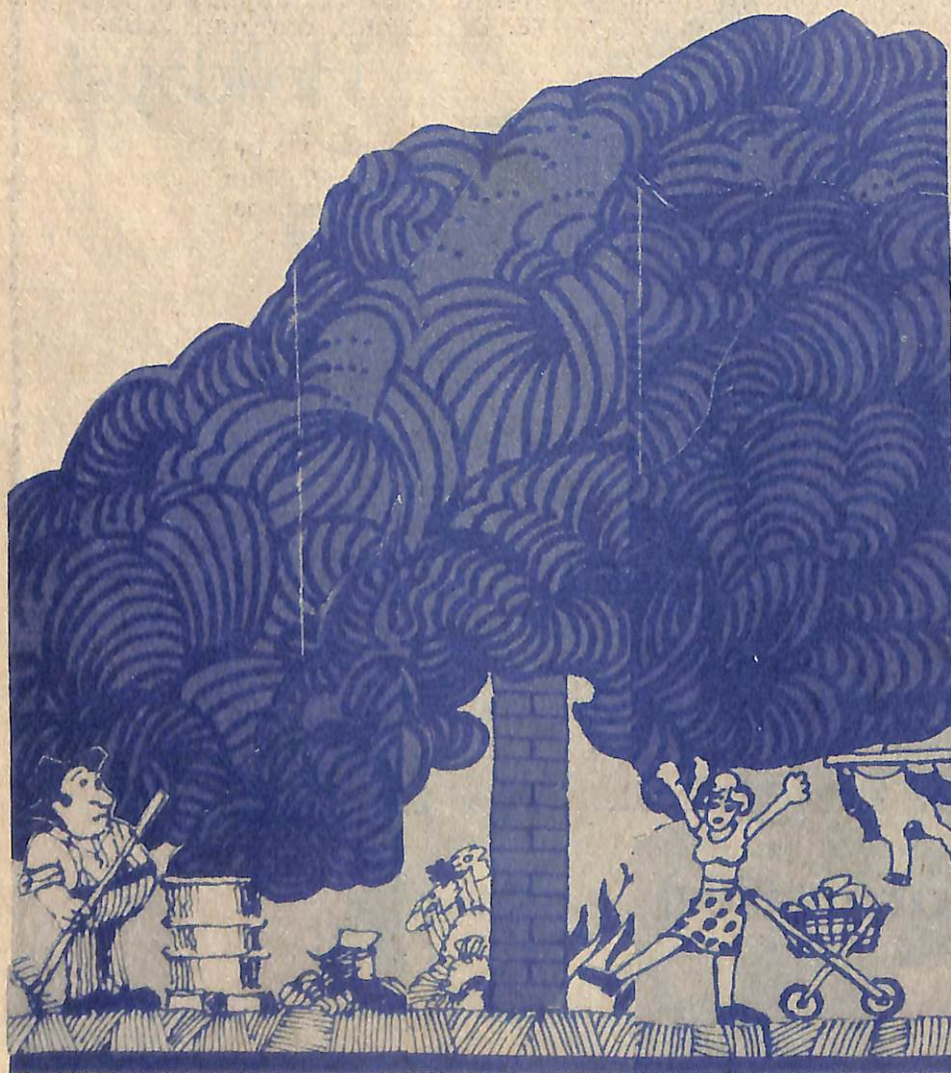
"We feel that painting on silk opens up completely new horizons in art and craft as well as in the areas of hand-painted textiles and fashion design," said Beatrice.

John stressed that the central idea of **Marie France** is the workshop. "We offer several weekly workshops including a full afternoon on Saturdays. The workshops introduce participants to the basic principles of the "Serti" technique and move on to more advanced work.

"We encourage people to explore the endless design and colour possibilities and develop their own relationship with the fabric and dyes. The medium has limitless flexibility and is surprisingly quick to learn," he said.

Beatrice and John also offer back-up services to those who have completed workshops and have an extensive range of silks and dyes available.

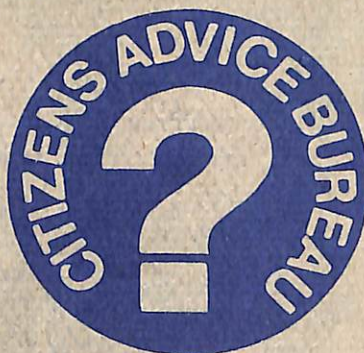
They have been very encouraged about the response so far. If you would like to know more, visit Beatrice and John at 244 High Street or ring them on **861 9986**.



The ABC of the CAB

A.I.D.S., ABORIGINAL HANDCRAFTS, ABORIGINES, ABORTION, ACCIDENTS, ACCOMMODATION, ACUPUNCTURE, ADOPTIONS, ADULT EDUCATION, ADVERTISING, AEROBIC CLASSES, AFFIDAVITS, AGE PENSIONS, AGED PERSONS, AGORAPHOBIA, ALARM SYSTEMS, ALCOHOLISM, ALZHEIMER'S SYNDROME, AMBULANCE SERVICES, ANGLING CLUBS, ANIMALS, ANOREXIA NERVOSA, APHASIA, APPRENTICESHIP, ARCHERY CLUBS, ARREST, ARTIFICIAL LIMBS, ARTS AND CRAFTS, ASIANS, ASTRONOMY, ATHLETIC CLUBS, AUST. GOVT. PUBS., AUTISTIC CHILDREN, BABY/INVALID & AGED SITTING, BACKGAMMON, BADMINTON, BALLET, BANDS, BANKRUPTCY, BASEBALL, BASKETBALL, BEES, BICYCLE REGISTRATION, BILLIARD & SNOOKER CLUBS, BINGO, BIRDS, BIRTHS/DEATHS & MARRIAGES, BLACKMAIL, BLANKETS, BLEEDING, BLIND SERVICES, BLOOD DONORS, BOARD AND LODGING, BOARDING HOUSES, BOCCIE, BOND MONEY, BOWLING CLUBS, BOXING, BRAILLE AND TALKING BOOK LIBRARY, BRAIN DAMAGE, BREADMAKING, BULK BUYING, BUSINESS, BUYING A CAR, BUYING OR SELLING A HOUSE, CALISTHENICS, CAMERA CLUBS, CANCER, CANOEING AND ROWING, CAR CLUBS, CAR INSURANCE, CARDS, CARE GROUPS, CARPENTERS AND BUILDERS, CARS, CATERING, CATS, CAVE EXPLORATION, CEMETERIES, CHAMBERS OF COMMERCE, CHAPLAINS, CHEQUES, CHESS CLUBS, CHILDBIRTH, CHILDREN, CHIMNEY SWEEPS, CHINA PAINTING, CHINESE, CHIROPRACTORS, CHORAL SOCIETIES, CHRISTMAS CARDS, CHURCH HOMES, CHURCHES & SYNAGOGUES (see also Religions), CITIZENS ADVICE BUREAUX, CLAIRVOYANTS, CLERKS OF COURTS, CLOTHING, CLUBS, COACHING (EDUCATIONAL), COFFEE SHOPS, COIN COLLECTING, COMMUNITY EDUCATION OFFICER, COMPANIES, COMPOSTING, COMPUTER PROGRAMMING, CONCRETE CONTRACTORS, CONSULS, CONSUMER COMPLAINTS, CONSUMER RIGHTS, CONVALESCENT HOMES, CONVEYANCING, COOKING CLASSES, COPYRIGHT, CORRESPONDENCE COURSES, COT DEATHS, COUNCIL ELECTIONS, COUNCILLORS, COUNCIL SERVICES, COUNSELLING SERVICES, COURTS (LAW), COUNTRY SERVICES, CREATIVE SCHOOL HOLIDAY CLUBS, CREDIT — BUYING ON, CREDIT UNIONS, CRICKET CLUBS, CRIME, CROATIANS, CROQUET CLUBS, CRUELTY TO CHILDREN, CUSTODY, CYCLE CLUBS.

Take advantage of the Citizens' Advice Bureau's extensive community file by visiting the centre in the Kew City Hall, opposite the library, between 10.00am and 3.00pm Monday to Friday and between 7.30 and 9.00 on Tuesday evenings. The bureau is staffed by trained volunteers and free legal advice is available.



**Your neighbourhood
information centre**

High times at Kew Cemetery

Bill Stent's articles have encouraged another long-time Kew resident to send us her reminiscences. Ellen Coates, whose family history in Kew dates back to 1884, writes:

The Martin family lived in Gladstone Street from 1907 onwards. One of our most entertaining outings was to go to the gates of Kew Cemetery and watch the people of note arrive in their carriages for the funerals of some of Melbourne's "big names".

On any Sunday, people would flock to the cemetery to see the Springthorpe memorial and other notable head stones. In the early days a horse tram made the trip to the cemetery gates from the Victoria Bridge. This was later to be replaced by the electric tram which travelled between the Harp in East Kew and the Bridge.

Sundays provided interest for the neighbourhood children, who, as admirers of actress Nellie Stewart, visited her grave and left baskets of oranges in memory of her portrayal of Nell Gwynne.

The children also took advantage of the Chinese custom of leaving a beautiful, full roast dinner on top of their graves. The chance of a hot potato was not to be missed!

The habit of placing glass-domed wreaths on graves provided great interest. Unfortunately these became the objects of vandalism. I remember certain local lads found them a target for pea shooting, a popular pastime, and too many glass cases were broken. This led to a decline in their use.

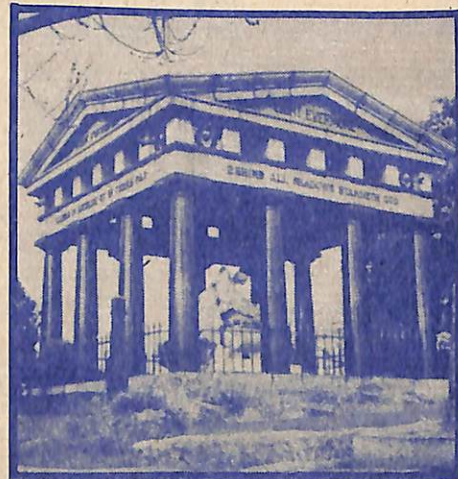
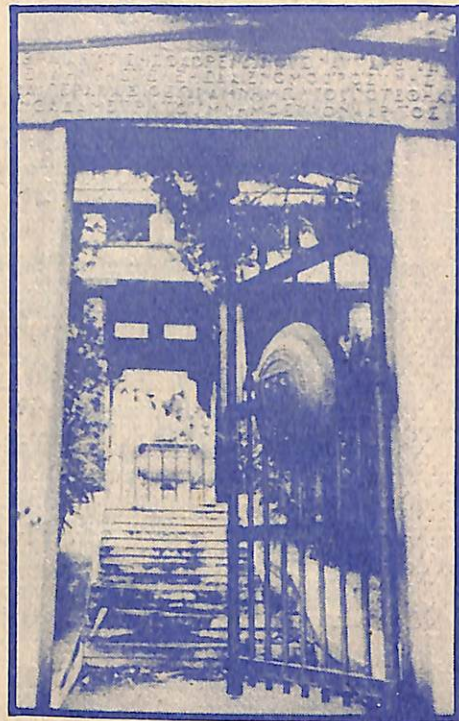
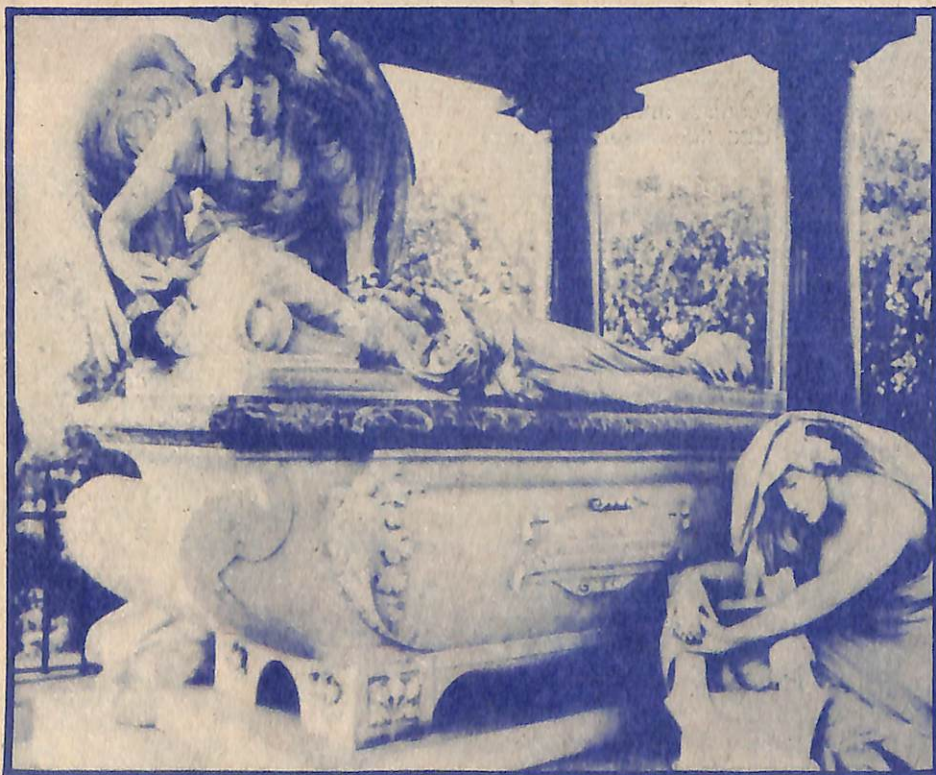
There were a good number of military funerals in the 1920s. Perhaps these were of men who had died of wounds

received in the Great War. Their funerals were conducted with full military honours.

In those days, the cemetery was a real showpiece, the entrance having a full floral display. It is interesting to hear that the Springthorpe Memorial is being restored as it is one of the most beautiful pieces of statuary in Australia.

When we talk of Kew's heritage, one of the first priorities should be the cemetery. This and, sadly, "Willsmere", were the two institutions by which the early settlers of Kew were known far and wide. For me, the sound of the cemetery clock striking the hours in the quiet of the night has followed my 72 years of living in much-loved Kew. In all that time, through marriage and retirement, I have never lived far from the cemetery clock.

Ellen Coates



*The Springthorpe Memorial,
Kew Cemetery*

Archer of the Year 1984/85

Last month, Gerry Hevey, M.B.E., President of Kew City Bowmen, was honoured by the writers and publishers of Archery Action by being named Archer of the Year. He is the third recipient of this coveted Australia-wide award and was presented with it at the State Field Championships at Diamond Valley.

Gerry's love for archery began in 1910 when as a 12 year old lad living in Ararat



Gerry Hervey

he began bow hunting with a home-made bow. His keen eye and strong arm soon began to supplement the home larder with fresh rabbits for his parents and two brothers and sisters.

Between the two world wars archery progressed very slowly until 1945 when Gerry founded the Ballarat R.S.L. Archery Club, which is now known as the Wendouree Archery Club. The next year he came to Melbourne where he started the Kew City Bowmen club and became its first president, the position which he holds to this day. Some 20 other archery clubs were also started by Gerry.

He has held every high position in the archery associations in Australia. From 1951 to 1981 he was the Field Marshal of all State and National championships. Seven years ago when Gerry reached his 80th birthday he decided to hang up his bow and leave the competition to younger sportsmen.

Kew City Bowmen are proud and honoured to have Gerry Hevey as their president for surely he is the father of archery in Australia.

Janis Dagis

This Kewriosity is being delivered to you by — Kew Women's Hockey Club

Women's hockey is a real growth area, says Sue Gell, president of the Kew Women's Hockey Club.

The club has 60 members who maintain their high enthusiasm through the chill of winter with a vigorous program of training sessions and matches.

At present they share the Victoria Park oval with footballers which is rather less than satisfactory.

The club is anxious to raise money to improve their facilities and develop a program of junior hockey for the 13-15 year olds, for which there is a great demand.



library news

Magazines, journals and newspapers provide up-to-date and concise information on a variety of subjects. Kew Municipal Library holds over 100 titles. Here are a selection of these —

HOME AND GARDEN

Australian Home Beautiful
Your Garden
American House and Garden

WOMEN'S MAGAZINES

MS
Cleo
McCalls
Australian Women's Weekly
Australian Vogue
Harper's Bazaar
Women Australia

HOBBIES

Australian Stamp Monthly
Australian Photography
Craft Australia
Wheels
Music and Musicians

COMPUTERS

Australian Business Computer
Australia Personal Computer
Your Computer

Lists

We have indexes to periodicals which are very useful to researchers. Also, on microfiche there are complete copies of older magazines (1981-83), all of which are indexed in *Pinpointer*.

Current affairs periodicals are also stocked, and these include *Time*, *The National Times*, and *The Bulletin*. The daily newspapers and the local newspapers are available too. Newspapers can only be read in the Library, but the other periodicals can be borrowed.

"Do it yourself
anatomy"
Lesson
II



Letters

Please keep letters as brief as possible. Some editing may be necessary due to space limitations.

Small Business Too Pricey

At the moment I am interested in the article Revitalizing Kew Junction. Now I am an advocate of the "Small Businessman" and think that small business provides a great service, and I invariably support them, but I think it should be pointed out to the small business people that they are jeopardizing their business by overcharging, in many instances. I give two examples:

Whilst shopping in a small grocers in the Cotham Road/Glenferrie Road area I bought some goods, among them some Mint Jelly for which I paid \$1.39. I thought at the time this was excessive. I then went along to the supermarket and bought the same jar for 92c. Other goods were higher priced too.

I am old and weary and would much rather shop at a small friendly store but it is unrealistic to pay such excessive amounts, and this is one of the things killing the small businesses. I am certainly not opposed to small extra charges on all articles in small shops as I regard them as providing a service to the public, but they seem to lose their heads!

I mention this as I think if the "small man" could be encouraged to compete with the larger store his/her sales would increase.

Mrs J. Chambers

Theft and vandalism hits Bowmen

During the school holidays the Kew City Bowmen Archery Club was broken into twice and our targets were hacked about and our bows and arrows stolen.

The bows and arrows were worth \$1400. The bows were Yamaha and both had red and blue handles. It is impossible to replace them as this type of bow is no longer made. Hopefully, this will make their recovery a little easier. The Kew Police are on the alert and would welcome any information about the bows.

Jim Bagnell
Kew City Bowmen

A Case of Discrimination?

After reading the June edition of Kewriosity, I found myself rather angry. The title of the article in question, No Brothels for Kew, stood defiantly at the top of the page and unfortunately set the tone for the whole article.

The argument expressed in the article was that Kew has no area suitable to house such establishments because they'd be too near shops, churches and places children frequent. It wasn't the article's contention which angered me but rather its discriminatory Victorian tone.

I was under the impression that we live in a society which for the main prides itself on tolerance and an abhorrence of discrimination. I found it rather ironic to read the article just beneath that on brothels, proudly stating Kew's progressiveness in having six female councillors in a fanfare of self-congratulation.

I am not addressing the morality or the feasibility of the brothel question, but simply the idea of positive and negative discrimination. You can't have both! If you've ever read George Orwell's Animal Farm, the likeness is obvious. If not, read it, you may learn something.

Kathy Don

Your comments highlight the findings of the Age Poll of May 13th this year. Seventy-five per cent of Victorians are in favour of the legalisation of brothels — but nobody wants one in their street. Ed.



Deadline

Kewriosity is prepared by the Information Officer, Susan Schwartz, and a community-based Editorial Committee. Copy for the August issue should reach the Municipal Offices in Charles Street, Kew, by JULY 3rd.

Community notices continued

Religious Notices

Hyde Park Fellowship

The Fellowship will meet at Hyde Park Uniting Church in Pakington Street, North Kew, on Wednesday July 10th at 2.00pm.

This month's guest speaker will be from the TEAR fund, the caring arm of the Australian Evangelical Alliance.

All are welcome to join us in fellowship and for afternoon tea.

Support Groups

Rheumatism and Arthritis Association of Victoria

Kew Arthritis Group will be holding their next meeting in July for their annual election of officers.

Venue: No 3 Committee Room Civic Centre.

Date: 10.30am July 23rd Tuesday.

Speaker Mr Doyle: "The Art of Glassblowing". Items on sale, visitors welcome, morning tea served.

Information: President 862 2021, Secretary 859 8335.

Council meetings for July

Tues 2 General Purposes committee 7.30 pm

COUNCIL 8.15 pm

Tues 16th Standing Committees 7.30 pm

Tues 23rd General Purposes Committee 7.30 pm

Tues 30th General Purposes 7.30 pm

COUNCIL 8.15 pm

Meetings are held in the Committee Rooms at the Municipal Offices in Charles Street, Kew, and are open to all Kew residents.