

# KEWRIOSITY

Municipal Offices,  
Charles St., Kew, 3101

June 1985

## Taking stock of our heritage

If residential and other planning is to be thorough and properly based, a detailed knowledge of our City's heritage is essential. Many municipalities have already completed heritage studies, generally with the assistance of a grant from the National Estate Program. Kew has made two unsuccessful applications for a grant and plans to make a third and hopefully successful application this year.

Council believes that a heritage study would be of great value. It would provide a context within which priorities and strategies for preservation could be developed and give Council a background for the formulation of environmental amenity controls.

Council is keen that a Heritage Committee should be formed, made up of interested Councillors and represen-

tatives from the public and local groups. The committee's brief would be to collect and collate all available information on buildings, places and objects of heritage value in Kew and promote interest in such a study.

Some of Kew's heritage has already been lost. It is essential that buildings and places of interest be assessed and rated for preservation or restoration so that the unique historical character of Kew is retained for future generations to enjoy.



*A familiar Kew landmark and part of our heritage. The clock tower and gates were added to the cemetery in 1895, at the same time as the seemingly endless brick fence. — From the "Hawthorn and Kew Sketchbook" by Brian Carroll with illustrations by Arno Roger-Gernesh, available in Kew Library.*

## Councillors take a slide

As part of their investigations into the proposed Recreation Centre for Kew, Councillors **Wendy Smith** and **Murray Wood** simply had to take a ride on the "Devil" and shoot down the "Blow-hole". Both these water slides are part of the Norlane Water World complex at Geelong. The Committee recently visited two centres in Geelong to investigate the facilities they offer the public, and their financial viability. It was found that for a relatively low capital investment, a good return can be expected toward the running cost of the rest of the centre.

The proposition to include an indoor water slide in the Recreation Centre proposed for Kew was accepted by the Council at its April meeting as part of the latest report of the Recreation Centre Consultative Committee.

In other developments towards the building of our Recreation Centre, an application is being prepared for the Department of Sport & Recreation for a grant towards planning and initial building costs, and it is felt that this application will be viewed favourably.

The Board of Works has indicated that the initial proposal for the redevelopment of the site would not be acceptable, and thus alternatives are currently being investigated. It is important that the greatest utilization be made of the site in order that the contribution of the Council, and hence the rate-payers, be kept to a minimum.

Comments to members of the committee at the Kew Festival indicated that the residents of Kew still rate the construction of an indoor swimming pool and recreation centre as a high priority.

## inside

Community notes 2, 8  
Council update 3-5, 6  
Youth Page 6, 7  
Community news 5-8  
Features 7, 8



# community notices



space  
to let

## Auxiliaries

### *Save the Children Fund*

On June 13th, the Save the Children Fund will meet at 10.00 am in the Auxiliary Room at the Municipal Offices.

On June 17th, in the Auxiliary Room, there will be a fund-raising morning. The Royal District Nursing Service will be there, so come along at 10.00 am. Morning tea will be served and there will be a \$1.00 donation for each function.

## Clubs and Societies

### *Kew Garden Club*

At the meeting on Thursday 13th June, Mrs Dorothy Baldwin will demonstrate the art of flower arranging. Dorothy always has many handy hints to pass on to members and friends and something new up her sleeve. Even if you're not a practitioner, you will find much to appreciate in her artistry.

The meeting will be at 8.00 pm in the Senior Citizens' Centre. All welcome. Inquiries 859 6086.

### *Native Plant Group*

The next meeting will be on Monday, 24th June, at 8.00 pm in the Senior Citizens' Centre, cnr High & Childers Sts, Kew.

Mrs Hazel Blackney, well-known member of SGAP, will speak to us on "Hardy Plants for the Suburban Block". A special segment on Acacias will be included. All welcome. Inquiries 861 9484.

### *Kew Historical Society*

The next meeting will be held on Wednesday, June 12th, in the Manchester Unity Hall, Union Street, Kew.

**Peter Davies**, the Superintendent of Parks and Gardens at Kew Council, will be the guest speaker. He will talk on the history of parks and street-scapes in Kew.

Visitors are welcome. For further information, contact **819 3118**.

## General

### *Anyone for Scrabble?*

A regular **Scrabble** evening will be held at the Kew Community House, 6 Derby Street, on Fridays between 7.30 pm and 10.30 pm.

For further information, contact **Mary Nelson** on **801649**.

### *Shoppers' Guide*

A Shoppers' Guide demonstration by the **Metropolitan Research Company** will be held at St. Peter Claver Hall, 154 Cotham Road, Kew, on July 2nd, at 1.30 pm. Afternoon tea will be provided and proceeds from the afternoon will go to the missions.

If you would like to attend, ring **80 3715** before June 25th.

### *Bridge players wanted*

The Melbourne Bridge Centre at 30 Cotham Road, welcomes bridge players of all standards, and anyone who wishes to learn. Club games, supervised play, and classes, are all available.

For information about the range of games played and the times for beginners' classes ring the Centre on **862 1449** or **859 8336**.

### *Music and movement*

There are vacancies in a music and movement class for pre-schoolers being held at the Community House on Fridays at 9.30 am. If you would like to join, or if you are interested in the class being run after school for five and six year olds, ring **Beth Rankin** on **859 2009**.

### *Folk dancing*

An international folk dance workshop will be held on Sunday June 30th at Carlton Community Centre, 150 Princes Street, Carlton, 2-5 pm. For details see *The Age Weekender* or ring **80 1632**.

### *The Hunger Project*

The Ending Hunger Briefing which will give accurate and accessible information about hunger so that individuals can take effective action to bring about its end, will take place at the Hawthorn Recreation Centre in Linda Crescent, on June 16th at 1.00 pm.

The Hunger Project is an educational organization and for further information about its work, contact **Ian Stephens** on **387 6391** or write to **P.O. Box 2585W G.P.O. Melbourne, 3001**.

### *Montessori workshops*

One-night workshops on play and group activities and aims based on the Montessori method of education are being held at 1 Myrtle Avenue, Kew.

These workshops will be of interest to parents of children from birth to four years of age.

For further information, please contact **Mrs J. Kalker** on **80 1897**.

## Politics

### *East Kew Labor Party*

The next meeting will be on Monday, June 10th at 8.00 pm. **Alan Morgan** will continue the discussion of unemployment.

For further enquiries, contact **859 6494**.

## Religious Notices

### *Hyde Park Fellowship*

A speaker from "The Travellers' Aid Society of Victoria" will attend our next meeting to tell us about his work. A sincere welcome is given to all who join us and afternoon tea is served at the conclusion of the meeting.

Come along and learn about the Society at 2.00 pm, Wednesday June 10th, at the Hyde Park Uniting Church, Pakington Street, North Kew.

cont. P8



# Revitalising Kew Junction

If you shop at Kew Junction, it is probably because you value the relaxed pace, the contact with shopkeepers who have time to take an interest in their customers, the lack of crowds and the pleasant "village" atmosphere. If you do not shop at the Junction it might be because you find difficulty in parking or that you prefer larger "one-stop" shopping centres like those at Camberwell, Box Hill or Doncaster.

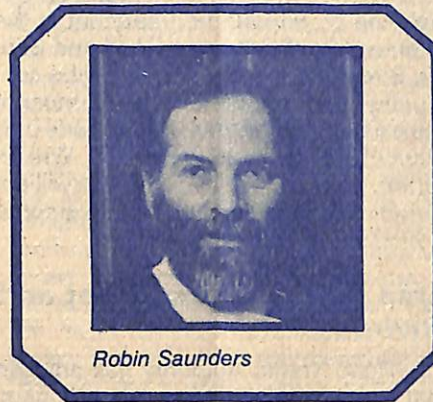
Regardless of your shopping habits I'm sure that no Kew resident would wish the Junction shopping centre to die, to wither away through lack of business. It should be the heart of Kew, a friendly place providing for the wide-ranging needs of consumers.

Council has been concerned for some time about the gradual decline in the Junction shopping centre. This is due, in part, to social and demographic changes and to the dramatic development in retailing over the last few years. Kew's population is slowly declining; our more mobile residents are driving to the large centres in surrounding municipalities. People often associate the Junction with a limited range of goods, inadequate parking and a rather dreary appearance. The centre urgently needs a facelift.

This is not to suggest that there is no potential for development at the Junction. We believe it could once again be the flourishing centre it was in earlier days. Council has sponsored a number of studies over recent years, to analyse the reasons for the Junction's decline and to develop strategies which would reverse the trend.

A three-pronged approach is being followed. Improvements to parking and access are under review; ways of attracting people to the Junction to shop are being considered and options for improving the appearance of the centre so that it becomes a more attractive and inviting place are being developed.

We value the personalized service in smaller shopping centres but the businesses must be viable and shoppers' expectations about the range of shops and goods that should be available have changed. An essential



Robin Saunders

component in the revitalization of the Junction will be adapting to these changes.

We envisage Kew Junction retaining the village-style shopping centre but with certain positive modifications. The Junction must have an identity. It should be a people-oriented centre with places to meet friends and areas to relax. It should provide for shoppers' needs within strict limits applied to expansion so that the centre never becomes impersonal or sprawling. The amenity of surrounding residential areas must be maintained.

One possibility is the development of a two-storey car park in front of Safeway which would provide more parking spaces. A car park of this kind would be landscaped to minimise its impact. A pedestrian boulevard could be developed linking Princess and Walpole Streets along the rear of the shops fronting High Street. This would be both a practical and aesthetically pleasing solution to the problem of pedestrian access to and within the Junction.

The encouragement of office development with some retail components in the High Street, Cotham Road, Derrick Street "triangle" and the south side of the Junction would have the effect of increasing the number of people using the Junction and add to the range of shops and goods available there.

We are concerned that the Junction should not be developed at the expense of neighbouring residents. Changes must have minimal effect on the amenity of the neighbouring areas. The views of

residents and traders will be considered throughout the planning process.

The gradual decline of the Junction shopping centre should be of concern to all Kew residents. As a community we cannot allow the Junction to become the dead heart of Kew. The options being considered for the rejuvenation of the area all contain exciting elements. Those that are finally chosen will reverse the decline and help to make the Junction the thriving community centre it once was.

## New pedestrian crossing

Council has agreed to the siting of the new pedestrian-operated signals directly opposite 541 High Street, midblock between Childers Street and Belford Road.

This is seen as the best position for the crossing as it minimises parking loss, and is convenient to all prospective users, providing easy access to the park, public transport, the Senior Citizens' Centre and Hamer Court.

Council has advised the Road Traffic Authority of this decision and has requested that they install the crossing at the earliest possible date.

## Council meetings for June

**Tues. 4** General Purposes Committee  
7.30 pm  
**COUNCIL** 8.00 pm

**Tues. 18** Standing Committees 7.30 pm

**Tues. 25** General Purposes Committee  
7.30 pm

Meetings are held in the Committee Rooms of the Municipal Offices in Charles Street, Kew, and are open to all Kew residents.



# Kew Playgroups

Four neighbourhood playgroups for three year olds have been established in Kew since February, 1985:

**Denmark Street Playgroup** held at Denmark Street Infant Welfare Centre (I.W.C.), Thursday 1.00 pm to 3.00 pm.

**Peel Street Playgroup** held at Peel Street I.W.C., Monday 10.00 am to 11.30 am.

**Strathalbyn Street Playgroup** held at Strathalbyn Street I.W.C. Monday 10.30 am to 12.00 noon. The demand for this group has surpassed the required quota, thus a new group is starting 2nd term at the **East Kew Uniting Church**, Normanby Road, East Kew on Wednesday and Friday from 1.00 pm to 3.00 pm. If you are interested in joining this group for either session or both, contact the **Playleader**, City of Kew, 862 2466.

These neighbourhood playgroups add to the list of home and community playgroups which have existed for a number of years. Community playgroups are:

**Kew Pre School Support Group** held at the Baptist Church Hall in Woodlands Avenue, East Kew.

**Highbury Grove Playgroup** held at the Uniting Church, Highbury Grove, Kew.

**Home Playgroup** for two years and under, contact **Sandra Burston** on 859 2097 or **Karen Clarke** on 859 3428.

## In need of some good yarns . . .

Any knitting yarns please! If you have any knitting yarns taking up space in your house, it would be greatly appreciated by elderly folk of Kew who attend a craft group run by Kew Council. Small or large quantities, any ply and any colours will be used by our avid knitters.

If you can help out please contact the Social Development Department or drop in your donations of yarns to the Senior Citizens' Centre, High Street, Kew.

## TRAFFIC MANAGEMENT

### Area 10 — bounded by Burke, Barkers, Glenferrie and Cotham Roads

At its meeting in April, Council resolved to proceed with the implementation of Scheme D, without the treatment at the intersection of Edgevale Road and Stirling Street. All the new works will be constructed in permanent form and most of the existing treatments will be made permanent. The intersection of Wrixon Street with Sackville and Fitzwilliam Streets will be redesigned to overcome some operational difficulties.

### Area 9 — Charles Street and environs

The Road Traffic Authority has advised that it has no objections to the proposed treatments but has rejected Council's

application for a 40 kph zone. Final design work is proceeding.

### Area 6 — bounded by High Street, Harp, Burke and Cotham Roads and Charles Street

A questionnaire has been distributed to all residents and a report will be presented to Council when all responses have been received. It is essential that as many people as possible return these questionnaires to enable the residents' committee and Council to make an informed decision on traffic management in the area.

### Area 5 — bounded by High, Princess, Earl and Asquith Streets

A questionnaire has been distributed and responses received. There has been quite a level of response which will enable the residents' committee to review the plan based on resident opinion.

## Going native at the billabong

The Willsmere Park Billabong area, one of Kew's finest parklands, is being invaded by non-native trees. Seeds dropped by birds or carried on the wind are proliferating at the expense of indigenous trees. These seedlings and suckers spread profusely and prevent rejuvenation of native species.

In order to maintain a homogeneous environment at the billabong, **Peter Davies**, Superintendent of Parks and Gardens, plans to remove the interlopers and replace them with species native to the area, during the current planting season.



## Emergency drivers needed

Winter is here and with it are colds, flu and holidays in Queensland for the lucky ones.

"Meals on Wheels" needs a bank of emergency volunteer drivers to call upon when regular drivers are ill or away.

We are not asking for a long-term commitment but if you have an hour and a half to spare occasionally, you could help to keep this valuable service going through the winter chill — the time it is most needed.

If you would like to become an emergency driver, contact Helen Wood on 861 7308.

**Do you need short term day care for your children? Contact the Kew Occasional Care Centre on 859 6459. 220 Kew families can't be wrong!**



# No brothels for Kew

**In recent legislation brought down by the State Government, brothels are treated in a similar way to all other land uses and developments. Only location and land use issues are to be considered in granting permits; their moral or social acceptability in the local community is to be ignored.**

The Melbourne Metropolitan Planning Scheme now contains prescribed location and amenity standards for brothels. If these standards are met, a council cannot refuse an application on moral or social grounds. A council may refuse to grant permission for a brothel on the grounds that it is too close to a residential area, school or church but such a decision is subject to the same Planning Appeals Board as any other land use activity. Appeals against council decisions to refuse permission for brothels in their municipalities have recently been upheld by the board.

In May 1984, Kew Council advised the

Minister for Planning and Environment that as a matter of policy and on town planning grounds, the existing office, business and industrial zones — all acceptable locations for brothels under the new legislation — were not suitable locations for brothels in Kew. This is due to the narrow ribbon nature of these zones resulting in their close proximity to residential areas, churches, schools and community facilities and the large numbers of children attending schools in Kew who frequent the commercial areas.

Council intends to reaffirm its view to the Minister of Planning and to local parliamentarians, that the introduction of brothels to Kew — even in approved zones — is completely inappropriate, for the above reasons. Council will review the issue after the publication of the Neave Inquiry into Prostitution but until that time our policy is one of implacable opposition to the new legislation preventing councils from banning brothels outright in their own municipalities.

## No news on Baby Safety Bassinet Loan Scheme

Due to further delays by the Road Traffic Authority and unreliable deliveries from manufacturers, we are still unable to give any definite information on the scheme.

Keep an eye open in local papers and Infant Welfare Centres for more information when it becomes available.

## Correction

*It was incorrectly stated in last months' Kewriosity that there were five women councillors at Kew. There are six women and this is the largest number for any municipality in the state, according to longstanding councillor and former Mayor, Jill O'Brien. The state average is a mere 1.18 women per council and there are 64 Victorian councils with no women councillors at all.*

*There are women representing each ward in Kew. Kaye Cole in Prospect Ward, Anne Glasson in Central Ward, Phyllis Tinney and Phyllis Hore in College, Jill O'Brien in Studley Park and in North Ward, Wendy Smith.*

*An apology is due to the 0.1666 of each councillor left out.*

## MATHS WITHOUT FEAR

Is your maths a worry? If so, FREE help is available at **Swinburne College of TAFE**. For many people "mathematics" is not without trauma. And yet maths, at some level, is required in many jobs. Sometimes young people are prevented from entering areas of work because their maths is not up to standard. This may mean that they cannot pass entry test requirements, or simply that they feel inadequate when an employer asks about their ability with maths.

If you are aged between 15 and 24, and would like to improve your maths, a P.E.P.-funded program at Swinburne is available free. Students can come and work in small groups on individual programs that cover their needs.

So if you want to improve your maths, whether it be to prepare for a job, a course of study, or just out of general interest, come along to Swinburne. You can ring **Peta Cross** or **Judith Martin** on 819 8806, or drop in at the **Community Access Unit, Swinburne College of TAFE, 44 William St., Hawthorn.**

## KEW COMMUNITY HOUSE

Co-ordinator: Jo Osborne,  
6 Derby Street, Kew, 3101. Phone 862 3126



*Second term at the Community House promises to be a bumper event. The following courses have been arranged and full details will be made available in our course brochure which will be made available by May 21st. Watch for our brochure in the library, kindergartens, shops...*

*Groups will be held during the day time and evenings and hopefully there will be something to suit all tastes.*

*The Kew Writers' Forum will continue. They have been meeting at 7.00 pm on Tuesday nights over the last six months and have produced their first small anthology which was launched by the Mayor at the Community House Open Day in March. Copies are available for browsing — or buying — at the House and new members to the group will be most welcome.*

*Here are the wide-ranging courses we will be offering:*

**English conversation for migrants**

**Daytime Scrabble group**

**City bushwalks**

**Kew Kids and Kritters pet care group**

**Systematic training for effective parenting (S.T.E.P.)**

**Know your community**

**Cooking workshops (Russian, Chinese, soups)**

**St. John's First Aid (Certificate Course)**

**Bookbinding workshop**

**Baubles and Bangles**

**Craft lucky dip**

**Bike repairs**

**Bridge playing for beginners**

**Drug awareness seminar for parents**

*Ring the House to enquire about enrolment and ask for Jo.*

## Kew Rotary Art Show

*Don't miss the Kew Rotary Art Show, to be held at the Kew Civic Centre during the Queen's Birthday weekend. Apart from our very high standard of entries, there will be paintings by Miss Jane F. Dickenson and Mr Paul Macdonald Smith offered as raffle prizes.*



# YOUTH PAGE

Welcome. It is a real pleasure to be able to write this column from the new Youth Resource and Activity Centre. After many months of operating programs for young people in Kew from temporary youth venues, it is fantastic to have our own permanent building. The building still has some renovations to be carried out but the programs are off and running.

Our article this month features one of the new programs that will begin on **Monday 27th May, 1985**, the Unemployment Program. This program has a limit on numbers so you have to be quick to get a spot.

## Employment and unemployment

The program at the Youth Resource Centre will offer an alternative to programs operating in the community today, with small intensive group support being its major objective over a period of ten weeks. We read about employment and unemployment every day in newspapers. Politicians devote much of their time to talking about unemployment but very little appears to reach those people who need assistance.

Young people in Kew have no Department of Social Security, no Commonwealth Employment Service and no agency that caters for their needs. Camberwell is the closest. Perhaps we can more easily understand the unemployment situation by sharing a conversation I recently had with two young people who participate at the Youth Centre. I asked **Jim** (18) and **Nick** (17) about some of their experiences since being unemployed. In regard to transport they need to catch three trams to reach the Camberwell C.E.S.

Although they don't need to attend the C.E.S. each day, the C.E.S. is the only other place, apart from the papers, that advertises employment. Because of travelling costs, both only visit the C.E.S. an average of once per week.

Jim's benefit has recently gone up to \$165.00 per fortnight. He has used his money to purchase a car which he hopes will make him more employable. To run a car however costs him more than he receives and then there are living costs, board and other expenses.

Nick's benefit totals \$90.00 per fort-

night. He has been unemployed since he left his last job due to adverse working conditions. His money goes on rent and living costs and repaying a loan to his brother. He finds it difficult to have any remaining money for entertainment. He uses some of the cash to come to the Youth Centre which provides cheap entertainment and one of his only means of social interaction with a group of young people.

It is important to realise that there are no magic answers to unemployment, whether it be a Government or community scheme. Realistically, many young people will be unemployed at some time in their lives. Recent figures show that 50% under the age of 25 and 25% under 20 are unemployed in Kew. We may be luckier than other suburbs with a relatively low percentage of unemployed to the total population, but that does not remove the plight of those who find themselves unemployed.

The employment program at the Youth Centre offers small group support to young unemployed.

The program will include items such as job search, interview techniques and mutual support. A main component will be the follow-up to interview sessions. Participants will describe what happened during the interview; this will form a basis for discussing interview technique and improving skills in this area.

**The service will operate Mondays from 10 a.m. until 12.30 p.m., Wednesday from 10.40 a.m. to 12.30 p.m. and Thursday from 2.00 p.m. until 5.00 p.m.**

The program is open to young people aged between 16 and 25 years, who are committed to finding employment. You must be prepared to participate in a group and come as often as possible to maintain continuity with other participants.

**For further information call Ian Patching on 861 6828.**



*Unemployment got you down?*



*Come along to the Youth Resource*



*Centre and join our self-help group.*

## Kew Tennis Club Championships

The Mayor and Mayoress of Kew presented the trophies at the Kew Tennis Club Championships on May 4th.

**Margaret Coulston** won the triple crown — ladies' open singles, open doubles with **Jan Gallagher** and mixed doubles with **Simon Treacy**. **Justin Hams** captured two titles with an impressive win over **Bob Lyon** (13 times winner) in the open singles, and the open doubles partnered by **Brian Hallett**. **Stephen Hains** won the boys' singles and **Rebecca Bennett** the girls' singles.



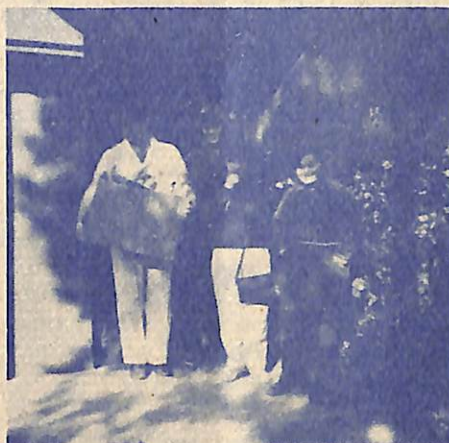
# Vocational training at Kew Cottages

At Kew Cottages, a scheme for developing vocational skills in young intellectually disabled people is proving very successful.

The scheme, which started in 1980, involves the formation of house cleaning and gardening teams made up of three to six young people and a supervisor. The participants learn skills and have become very proficient at their tasks.

Preferences for particular jobs are taken into consideration and the teams are selected so that skills complement each other and a high standard is achieved.

Apart from the obvious advantages of developing self-sufficiency in certain areas, there are other benefits as well. The people in the program have a chance to see the way others, in a non-institutional environment, live. They learn to respect other people's possessions, behave suitably in social situations, develop rewarding relationships with members of the community and increase their sense of self-worth.



**Supervisor Merran with cleaning team Frank, Kerrie and Diedre.**

All these aspects aid the process of understanding and acceptance of intellectually disabled people, and help their integration into the community.

The participants in the program all receive training allowances, based on the work they perform. There is ongoing

assessment of ability/efficiency levels.

A non-profit company, Wurundjeri Industries Limited, has been formed by a group of businessmen, and recognised as a Sheltered Workshop by the Department of Community Services, to offer creative and active employment for intellectually disabled people in the service industries. It is anticipated that a number of the trainees from Children's Cottages Kew will be offered full-time employment by this company.

Both the training program at the Cottages and the Company rely on community support. More work contracts will be needed in the near future.

Those lucky enough to employ a cleaning team know the pleasure of returning to a spotlessly clean house and meeting a group of young people who know they have done their job well.

It is a rewarding experience for all involved.

For enquiries about the program contact **Ruth Trinick** or **Naomi Stewart** on 862 1233, Ext. 214 or 246.



## library news

Filmgoers and students of film enjoy the many film books which the Kew Library holds. There are books about film theory, film genres, filmmaking, filmmakers, film history and filmstars.

Here is a selection of titles:

### Theory

- J. Monaco **How to read a film: the art, technology, language, history and theory of film and media.**
- J.D. Andrew **The major film theories, and introduction.**

### Filmmaking

- J. Burder **16 mm film cutting.**
- S. Fist **Filmmaking.**

### Genres

- A. Frank **The horror film handbook.**
- H. Hossent **Gangster movies, gangsters, hoodlums and tough guys of the screen.**



*Gloria Swanson*

### Directors

- J. Monaco **The new wave, Truffaut, Godard, Chabrol,**

**Rohmer, Rivette.**

S. Mathews **35 mm dreams.** (Interviews with prominent Australian directors).

### Film Stars

G. Swanson **Swanson on Swanson.**

T. Kiernan **Jane Fonda: an intimate biography.**

E. Dundy **Finch, bloody Finch.**

Trivial Pursuit players might like to have P. Robertson's **The Guinness book of film facts and feats**, or P. Kael's **5001 nights at the movies: a guide from A to Z**, at hand for quick reference. Similarly for a chuckle the film buff would like to refer to H. Medved's **The Hollywood hall of shame: the most expensive flops in movie history.**

On Tuesday June 11th between 4 pm and 4.30 pm, a Hawthorn footballer will be giving a talk in the Kew Library for children eight years and over.



# From the influenza epidemic to the police strike of 1923

—Part 2 of a personal memory of Kew  
by Bill Stent

In 1919 just as life was returning to normal after the war, the tragic Spanish flu struck. Hospital accommodation and staff were stretched to the limit and volunteers were called. Many Kew people were immediately involved and were attached to the Fairfield and emergency hospitals until the epidemic abated. The Town Hall was the centre for inoculations and during this period many people wore linen masks covering the nose and mouth. Nineteen years later, many young ones became the victims of the devastating polio epidemic.

When I arrived in Kew the Friendly Societies were quite strong, although in Kalgoorlie they were much more active, many having their own brass bands. I joined the Loyal Kew Lodge of the Manchester Unity, the secretary being Mr Homes. Just about that time there had been a dispute between the doctors and the societies with the result that many societies recruited medical men from overseas. One of them was Dr Morris, who was highly regarded and practised for many years in Glenferrie Road.

In 1923 the bad working conditions in the Police Force came to a head and a strike developed. Chaos was immediate and the business centre of Melbourne was a shambles. Windows were shattered and clothing and goods stolen as well as being scattered out in Bourke Street. The government called for volunteers for the Special Police. They were issued with batons and moved in groups against the rioters.

This period was rather disastrous for some normally law-abiding Kew youths. They had gone into the city and were caught up with the excitement and picked up some shirts in Bourke Street. Walking home along Albert Street they were offered a lift which they readily accepted. Unfortunately for them it was a special Constable car and they were driven straight to Russell Street where they were charged with stealing and given six weeks without option.

The collapse of the strike resulted in the dismissal of the strikers. Several of those from the Kew area obtained jobs with the tramways and proved excellent employees.

## Correction

In last month's article, Bill Stent referred to the grocer on the corner of High and Derby Streets in 1918. His name was Ron Safstron, not Ron Stapleton as appeared in the article.



*Special Police wielding batons against the rioters*

## Letters

A number of letters have been received recently referring to articles in Kewriosity. Many Kew residents appreciated the Mayor's item on street trees and there was a good response to Bill Stent's memoir. Kewriosity welcomes letters and we would like to publish a selection each month. Have your say about Kew issues and write to Susan Schwartz, Information Officer, Municipal Offices, Charles Street, Kew, 3101.

## Deadline

Kewriosity is prepared by the Information Officer, Susan Schwartz, and a community-based Editorial Committee. Copy for the July issue should reach the Municipal Offices in Charles Street, Kew, by JUNE 3rd.



KEW PRE-SCHOOL SUPPORT GROUP

This Kewriosity is being delivered to you by — Kew Pre-School Support Group.

## notices continued

### Beth Nachman Synagogue

Daily services are held morning and evening at the Synagogue, 53 Walpole Street, Kew. For further details ring 861 9243.

## Support Groups

### Rheumatism and Arthritis Association of Victoria

Kew Arthritis Group as part of National Arthritis Week held a caravan stall for fund-raising and information.

It was an opportunity to make available to members of the public a comprehensive range of leaflets and booklets on the various types of arthritis, and how to recognise and cope with these complaints.

They will be holding their annual meeting this month.

**Venue** No 3 Committee Room, Kew Civic Centre

**Date** June 25th 1985

**Speaker** Mrs Rylda Bennett, Physiotherapist

**Time** 10.30 am

Information from President 862 2021, Secretary 859 8335.