



# KEWRIOSITY

Municipal Offices,  
Charles St., Kew, 3101

AUGUST, 1984

## Community key to festival success

*This is the first of a regular series on the annual Kew Community Festival. To both new and old residents, learning about the festival — its aims and what it offers both community groups and the individual — may well be an interesting way of finding out more about the city in which you live . . .*

To many, the Kew Community Festival conjures up images of colorful street parades and lively entertainment in the Alexandra Gardens.

And anyone who has spent a relaxing afternoon in the gardens or who perhaps attended this year's spit roast and fireworks display, will no doubt agree that the festival is an accepted part of life in Kew.

Yet the 10-day event is much more — as community groups associated with the festival are well aware.

The possibility of creating a greater understanding and awareness within the community, and of attracting new members, are just two of the opportunities the festival offers such groups.

Although still a long way off, plans are already under way to ensure next year's festival again offers something for everyone.

A suggestion to extend next year's festival as part of Kew's contribution to Victoria's 150th anniversary celebrations has been discussed.

The idea, which will undoubtedly add a new dimension to the festival, was developed at the festival committee's recent meeting — an idea which will also provide additional opportunities for community involvement.

As newly-elected committee chairman Terry Doyle pointed out, the success of this, as with the future of the festival itself, lies in community participation.

For unlike many, the KCF is far from a profit-oriented venture.

It owes its existence to the forethought of past committee chairman Gerry Petrie, who during a 1973-74 term as Kew mayor, decided such a festival would be a feasible way of drawing the city together into a community in the real sense.

Since its modest beginnings, the festival has grown considerably and thanks to the work of a hard-working and enthusiastic committee, has emerged as a mainstay of community life in Kew.

Unlike the first venture, paid for from Gerry's own mayoral allowance, the committee now gratefully receives council

support in the form of a grant, use of council facilities and administrative assistance.

And yet, to its credit, the festival remains an event which is organised by the community for the community — and therein lies the secret of its success as every effort is made to ensure it remains a community rather than commercial enterprise.

### NEW IDEAS

Already, the committee is at work planning next year's festivities, but with the intention to extend the festival, it also requires increased participation from community groups.

Any suggestions from interested community or sporting groups which would like to participate in the festival by organising an event, are more than welcome.

These may be forwarded to the Kew Community Festival Committee, c/- Municipal Offices, Charles Street, Kew.

## KEW CITIZENS' BAND RETURNS

The Kew Citizens' Band have returned home after a highly successful and rewarding Contest and Concert Tour of U.S.A. and New Zealand.

The tour started in Canberra where the band contested the "A" Grade section of the Australian Band Championships and successfully won the Own Choice selection and Marching sections of the contest.

Immediately after this contest the band flew to Los Angeles where concerts were given at Disneyland, California State University, Buena Park Shopping Centre, Disneyland Hotel.

After a busy six days in Los Angeles the band moved on to the wonderful city of San Francisco where concerts were presented at The Presidio Military Base, Pier 39 and Fisherman's Wharf, Ghirardelli Square, Central City Shopping Mall.

The next leg of the tour saw the band in Honolulu where a concert was presented

● Cont. on Page 2



## HYDE PARK FELLOWSHIP

Once again we extend an invitation to all who would care to join us in Fellowship at Hyde Park Uniting Church on Wednesday 8th August at 2 p.m.

Our guest speaker is Mr. Bert Wade who is well known as a Lay Preacher in the Uniting Church and also known by his work with "Christian Endeavour".

Come along and see how Christian Endeavour is continuing their good work with the young people of today.

As usual afternoon tea will be served at the conclusion of the meeting — ALL ARE WELCOME.

## KEW BAPTIST CHURCH

During the month of August, the Kew Baptist Church is participating in an America-Australia Partnership Crusade, an evangelistic presentation arranged by the Baptist Union of Victoria in conjunction with the Southern Baptist Convention of the United States of America.

The Crusade will be conducted in Baptist Churches throughout Victoria and the programme at Kew will be held from Sunday 5th August to Sunday 12th August.

The Baptist Church in Kew has made a Christian witness for the past 127 years and frequently feels the need of expanding that outreach throughout the community of Kew and surrounding areas.

To that end, the team from America, led by Dr. Lester Morris, Director of Christian Education Department of the Texas Baptist Convention, accompanied by a Youth Minister and others will bring a warm, vibrant and powerful message on the theme: "Life with a Purpose".

The object of this Crusade is to attract local residents and friends to the meetings planned for that week to cater for all ages. A letter drop of some 15,000 is presently being prepared for distribution throughout Kew, giving details of the week's events. Further enquiries would be welcomed at Kew Baptist Church office at the rear of the church at 8 Highbury Grove, Kew. Telephone 862 3292.

## ASIAN EVANGELICAL FELLOWSHIP

Reaching out to people from India and of Indian origin in Christian Fellowship on the second Sunday of each month. Plan on attending the next meeting on August 12th at 5 p.m. at the East Kew Baptist Church, Woodlands Avenue, East Kew.

Film: "Cliff Richard in Kenya". Music by "Lazaro Family" and "The Messengers". Tea. All welcome.

## KEW CITY BOWMEN

After 25 years of existence, this club has now established permanent targets on its own range at Hyde Park. Unfortunately those targets were vandalised recently when somebody tried to set fire to them. If you see a similar incident in the future, could you ring the club on 861 5640.

## KEW GARDEN CLUB

Summer must be just around the corner! At the next meeting of the Kew Garden Club, an officer from the M.M.B.W. will discuss "Watering Techniques".

"Space to Breathe", a film about the Board's parks, will also be shown. The meeting will be held at the Senior Citizens' Hall, Cnr. High & Childers Sts., at 8.00 p.m. on Thursday, 9th August.

## NATIVE PLANT GROUP

There will be no meeting in August due to school holidays. Members are invited to combine with the Kew Garden Club for their meeting on 9th August (see notice), which should be of mutual interest.

## KEW (DAYTIME) GARDEN CLUB

The next meeting will be held on Monday 27th August 1984 at the Elderly Citizens' Club, Childers St., Kew, commencing at 1.30 p.m. Please note: changes of time and meeting place.

Guest speaker: Mr. Vin Drew. Subject: Ferns.

At the June meeting Mrs. Nance Morley (a Fellow of the Royal Horti-

### ● Cont. from Page 1

at the world's largest air base 'Hickam Field'.

The band was very well received wherever they played and their efforts brought such praise as:

**Mr. Fritz Arko — Manager Pier 39** — "The best band that has ever played on the pier."

**Mr. Stephen Gill — Co-ordinator Music Festival Program for Disneyland** — "This very professional and refreshing group displayed exquisite musicianship and variety in their performance, captivating a large audience of all ages."

**Mr. John Melhuish — Australian Consul General, San Francisco** — "The music of the band was outstanding and a great credit to Australia."

Leaving Honolulu after three great days the band headed for New Zealand to take part in their National Band Championship which was held in Nelson at the top of the South Island.

New Zealand "A" Grade bands are considered to be amongst the best in the world, and the Kew Citizens' Band did ex-

cultural Society of Victoria) gave a very informative talk on annuals. New members and visitors always welcome. For further information please contact Mrs. Win Fearon, Tel. 859 2977.

## RAAV ACTION PROGRAMME

Research — Education — Service.

The Rheumatism and Arthritis Association of Victoria has a SELF HELP GROUP which meets at the Kew Civic Centre on the 4th Tuesday of each month.

Our next meeting will be held in Hall No. 3, on the 28th August. There will be a film entitled "The Home Maker".

Visitors are always welcome to attend these R.A.A.V. Self Help Group meetings. For further information you may phone our President 862 2694, or the R.A.A.V. office, Yarra Boulevard, Kew — phone 862 2555.

## AUSTRALIAN LABOR PARTY

It has sometimes been said that Kew is a "blue-ribbon" conservative seat. However that may be, it is a fact that at least one person in three always votes for the Labor Party in elections. To cater for this interest and support, there are four local branches of the A.L.P. active in Kew; these are the Kew, East Kew, and North Balwyn branches, and the Kooyong Central branch, which caters for those Australians who discuss their politics more fluently in the Greek language. Anyone interested to find out how to link up with any of these branches should ring 859 6494 for information.

tremely well in being placed fourth in this Championship.

Players of the band also did well in the New Zealand Solo Championships with Wally Pope winning the Junior Bass Solo and then going on to win the Junior Champion of Champions. Doug Trotman won the Horn Solo and was runner-up in the Senior Champion of Champions.

All the committee and players are very proud to have had the opportunity to represent the City of Kew and Australia during this tour, but we are now faced with the task of raising \$20,000 to pay off the bank overdraft. The band is prepared to work to raise this finance and ask that the Citizens of Kew support their band in their fund-raising efforts.

A "Welcome Home Concert" will be presented in the Kew Civic Centre on Sunday September 2nd commencing at 2.30 p.m. Guest artists will be popular local singers Margaret Nisbett and John Lidgerwood and tickets can be obtained from Ian Mathers on 878 3132 or Madonna Lord on 879 3049 at \$6.00 Adults, \$3.00 Pensioners & Students, \$1.00 Children, \$12.00 Family ticket.

## MAYOR'S COLUMN

The new Council year begins on 7th August and so I would like to use this opportunity, in my last Mayoral column, to report on some of the activities in Kew during my term of office.

Planning for major works usually extends over several years and one such project reached fruition this year. A Council Works Depot contains all the equipment for the "out door" maintenance of a City — roads, gutters, park benches, street signs, footpaths and nature strip planting, garbage collection and so on. All this, together with the Council Nursery, will be relocated in a staged programme on a site adjacent to the Chandler Highway.

When the present Depot area on the corner of High and Disraeli Streets is vacated, the municipality will have available an excellent site for future use. A committee of residents and Councillors has been working for some months to study the feasibility of a recreation centre on part of that land — so another planning process has commenced.

Kew's library is over-crowded and additional space was proposed to be provided by using the adjoining Auxiliary Room. Consideration is at present being given to converting the City Hall to a new Municipal Library and architects have been engaged to prepare a plan and cost estimates. Again, community representatives are assisting Councillors and staff in this evaluation.

Children's services have been thoroughly reviewed by another largely resident-comprised voluntary committee. Their recommendations for an extended hours kindergarten, occasional care and full day care centres, after-school programmes and the appointment of a Children's Services Officer have been endorsed by the Council and will be included in the budget deliberations for 1984/85.

In March, two new community facilities were opened. The Youth Resource Centre at 283 High Street and the Community House at 6 Derby Street have both received magnificent public support. A voluntary Committee of Management administers the Community House and generous financial help was given to the Resource Centre by members of Holy Trinity Church. This has been of great assistance in expanding the scope of youth services, particularly evening and school holiday activities for teenagers and daytime programmes for those without employment.

Traffic management has been a big issue this year and will



continue to involve residents, their Council representatives and Council officers in long and detailed consultations in order to achieve the most appropriate and acceptable measures possible.

In fact, consultation and co-operation have never been more visible in our city. This is obvious from the growing public response to open Council Committee meetings and willingness to participate in local activities. 'Kewriosity' is edited by the Kew Community Editorial Committee, appointed at a public meeting in April, and the inauguration of Neighbourhood Watch is another such example.

This summary is by no means all-embracing. A glance at the Kew Community Directory will reveal the many established and ongoing groups working voluntarily in the common interest. It has been my great pleasure this year to be able to meet and thank many of these workers on behalf of us all.

Appreciation has been expressed by the City too. The presentation of art works by Mrs. Laurel Abercrombie, Madame Shishi (Consul-General of Haiti) and the late Miss Lucy Hornby were gracious and generous gestures.

Kew has honoured three men of special significance this year. The "J. J. Higgins Oval" at Victoria Park was named to record fifty years of service to the city by the former Superintendent of Parks and Gardens; "Raoul Wallenberg Garden" was named at Kew Junction (reported in June Kewriosity), and on July 22 "Petrie Square" on the corner of Cotham Road and Charles Street was named to honour former Mayor and Kew Festival Chairman, Gerry Petrie.

Altogether, this has been a most rewarding and challenging term of office and I thank the Council for the great privilege of having been its Chairman.

Jill O'Brien

## TRAFFIC MANAGEMENT

The City of Kew has initiated a significant long-term review of traffic flow throughout the municipality. The City has been divided into 10 areas which are scheduled for monitoring and pilot schemes at different times.

This process is undertaken by the Council's Engineering Department in conjunction with traffic management consultants. Once data on traffic volumes and speeds has been collected, the residents of the area are encouraged to become involved in the community consultation process. This involves the establishment of **Area Committees** which meet regularly with the consultants to consider traffic management options. Chosen options are then tested for a trial period and monitored closely. Resident response is again sought, and, if it is positive, the

traffic management devices can be made permanent.

Currently, three areas are at different stages of this process.

**AREA 10** (bordered by Burke, Cotham, Glenferrie and Barkers): Traffic management devices were placed in this area for a trial period which ended recently. Residents were then surveyed and the majority rejected the long-term implementation of the devices. Council then convened a community consultative committee which is currently reviewing alternative traffic management proposals.

**AREA 6** (bordered by Cotham, Burke, Harp, High and Charles): The initial community consultation process has occurred and Council and the committee are now

waiting for the consultant's report. This report will recommend certain traffic management treatments which will reflect the concerns of the residents. These treatments, if approved by Council, will then be tested over a trial period.

**AREA 5** (bordered by High, Asquith, Earl and Princess): The first meeting of the consultative committee was held on 4th July. At this meeting the community representatives detailed the concerns of the residents, e.g. high traffic speeds in certain areas, use of side streets as short cuts, lack of pedestrian access etc. The consultant is currently collecting data on volume and speed of traffic and accident rates for discussion and evaluation.

If you have any queries please contact the Council's Traffic Engineer, Chris Fenner, on 862 2466.

# "The Gatehouse"

A new day centre for elderly people has recently been opened in Kew. "The Gatehouse", situated just off Princess St, is designed to cater for those elderly who are suffering from a moderate to severe degree of mental confusion.

## WHY A DAY CENTRE?

The need for such a service was established after a survey conducted two years ago by a group of health and welfare workers from a wide range of organisations in Kew and Hawthorn, who had come together as a Committee to examine the lack of facilities for this particular group within the aged population.

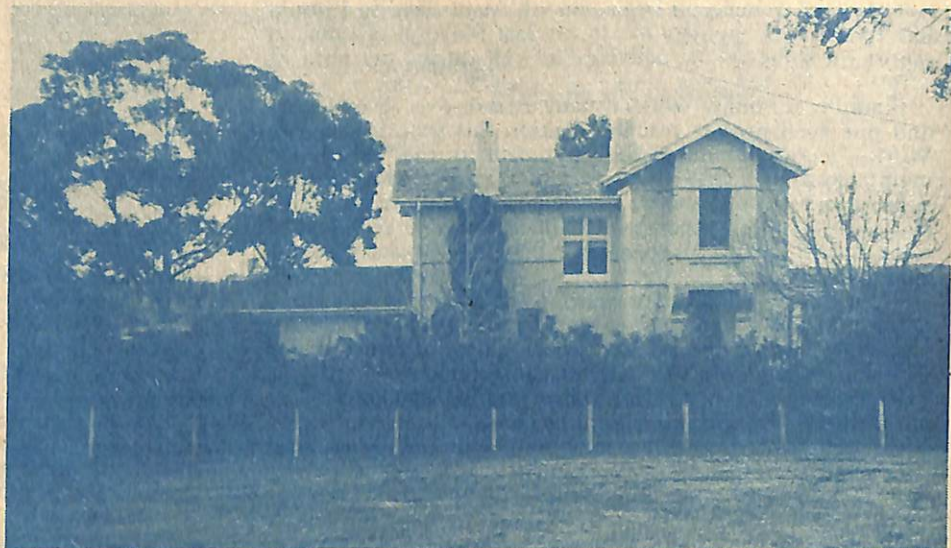
Confusion is a symptom of a wide variety of reversible and irreversible conditions; the group of people the Committee was concerned about were those older people who suffer from a chronic confusional state which signifies the presence of dementing illness such as Alzheimer's disease and multi infarct dementia. These illnesses are progressive in nature and are characterized by loss of memory with subsequent disorientation in person, place or time. Often the sufferer displays restless behaviour, a high degree of anxiety and is increasingly at risk in the community as the ability to perform routine tasks diminishes. Other areas of concern include the tendency to get lost outside familiar surroundings.

To date, there has been no specialist day centre for active confused elderly people in the eastern suburbs. Many families, either spouse or children, are providing a high level of care to the sufferer. The constant demands the dependent relationship create exhausts the carer both physically and emotionally. Many have difficulty finding time to do the shopping or to have a few hours to themselves. There is enormous pressure on these families, with subsequent effects on the health of a spouse or daughter.

## COMMUNITY SUPPORT

By providing community support for confused elderly people and their families, it is hoped that admissions to nursing homes and hospitals can be delayed until absolutely necessary. Premature admissions to institutions come about where there are few services specifically designed to support physically active, confused people within the community.

A well-attended public meeting held at the Kew Municipal Centre in June last year, adopted a Constitution for the proposed day centre and elected a Committee to set it up. The Gatehouse Committee of Management comprises representatives of the local organizations involved in the initial stages, viz Willsmere Hospital, Kew and Hawthorn Councils, the Uniting Church Lodge Programme, Moorfields



Community for Adult Care, Mount Royal, Hawthorn Day Hospital, a specialist geriatrician and a relative.

The Committee was fortunate enough to secure the use of a staff house in the grounds of Willsmere Hospital. The house, in excellent condition, is over 120 years old, and was the original gatehouse keeper's residence. It is a well-designed, spacious building with a comfortable, homely atmosphere. There is a large enclosed garden, with trees and shrubs, which is ideal for confused people who rarely have the opportunity to wander safely outdoors.

Funding for establishment expenses and running costs for the first twelve months has been obtained from benevolent trust companies, including the Kew Trust. The large garden area has been planted out with the help of the Kew Council nursery. There are two staff members at the Gatehouse. The Co-ordinator, Eunice Barter, is a trained nurse with an additional qualification in geriatrics, and the Assistant Co-ordinator, Beverly Mills, is an experienced craft worker. Both are very enthusiastic about the challenge offered to them, and as they get to know the day centre participants, will be able to provide relatives with support as well as practical advice on management within the home.

## PROGRAMME DESIGNED TO MAINTAIN INDEPENDENCE

The day centre programme is designed to enable participants to remain at their optimum level of functioning socially, psychologically and physically. It can cater for up to fifteen people each day and provides a safe environment which encourages participation and social contact through a range of productive and enjoyable activities. It includes reality orientation sessions, stimulation exercises,

socialization, recreation, especially gardening and familiar activities using everyday tasks such as food preparation. Lunch is cooked by the day centre participants, under staff supervision, and its preparation and serving is a major part of the programme.

## VOLUNTEERS NEEDED

Volunteer helpers are needed to assist with this work, as they are seen as an integral part of the day centre, providing individual attention to the participants. Training will be available to interested people in a supportive and friendly atmosphere. Time commitments for volunteers can be as little as a few hours once a fortnight.

The day centre is open on Tuesdays and Fridays, and transport for participants from Kew and Hawthorn can be provided by the Councils' buses. A fee of \$3 per day is charged to cover the cost of lunch and the material used for activities. The fee may be reduced or waived depending on individual circumstances.

## REFERRALS

Referrals to the Gatehouse can be made by anybody in the community. The Co-ordinator, Eunice Barter, can be contacted at the Gatehouse on 862 1233 ext. 538 (Tuesdays and Fridays), and she will visit the person at home to assess their suitability for the programme, contacting the doctor involved to discuss the day centre attendance.

The first annual general meeting of the Gatehouse will be held in Hall 3, the Kew Civic Centre at 8 p.m. on Thursday August 9th. Interested members of the public are most welcome to attend.

The Gatehouse will also be open for visitors and morning tea on Wednesday 15th August from 10 to 12.

YOUTH RESOURCE CENTRE  
 283 HIGH STREET  
 KEW 3101  
 Ph.: 861 7259

# YOUTH PAGES

## WELCOME

This month in the Youth Pages we will be looking at a Youth Programme with a difference that is presently operating at the Kew Community House. We will also be investigating some options for things to do in the School Holidays, which are about to arrive on our doorsteps. There

are programmes running in Kew and, as always, lots of things that we can do with our friends, if only we know how to look for them. Our "Things To Do — A Bit Further Afield" should help to get you thinking.

Our feature article will focus on Employment and Unemployment in Kew. This is an issue that we hear so much

about in the papers and at school, but do not always really understand how it affects us as individuals. We aim to answer some of these questions for you.

Remember, if you would like to contribute in any way to these Youth Pages, contact the Youth Resource Centre on 861 7259.

## YOUTH AFTER-SCHOOL PROGRAMME

The whole concept of youth work in Kew has evolved through discussion with interested parties including young people, police, and interested community members. These discussions realized the need for a varied and comprehensive range of youth programmes in Kew.

The Youth Centre, at 3 Walpole Street, Kew (next to Safeway) evolved from this need and was initiated to provide some of the programmes that seemed to be lacking in the Kew area.

One such programme is the after-school programme being run at the Youth Centre, Walpole St., Kew. The programme operates totally on a recreation basis with facilities for table tennis, snooker, table games, and a lounge area for relaxation. There are also kitchen facilities for the inevitable cups of tea and coffee.

The programme involves not just school students but unemployed young people as well as any other young people who may wish to drop in from time to time as their activities allow. Many of the unemployed young people who use the after-school programme have already been involved in the unemployment programme which is also being run at the Youth Centre.

The After-School Programme operates on Tuesday, Wednesday and Thursday afternoons from 3.30 till 5.00. The programme starts off with afternoon tea, then on to use of the other facilities. We operate an Aerobics class on Wednesdays from 4:00 and occasionally have video movies and experiment with a computer.

The Staff at the centre are only too pleased to help with any queries over school work, future employment or any other topics which may come up for discussion. We hope that any young person in the Kew area will feel free to come and drop in on us from time to time.

## YOUTH HOLIDAY PROGRAMME

The City of Kew is again offering the Youth of Kew an opportunity to do something with their spare time during the coming August school holiday period.

As in the past the Walpole St. centre will be open from Monday to Friday for each week of the holidays and the hours are tailored to suit the leisure times of young people — 1:30 to 10:30 p.m. each day. The programme will again be operating at the Kew Youth Centre, 3 Walpole Street, Kew, just next door to Safeway.

The holiday programme is operated as a drop-in centre with a large part of the programme being devised by the young people themselves. This process helps to develop a sense of being a part of the whole programme, and ensures that the young people are involved in activities of their own choosing.

During the May school holidays, some of the activities that the young people organised included night trips, video film making and production, and the organisation of an under 18 disco. Included with these were art and craft activities such as pottery, jewellery-making and painting. There were over 40 people involved in the programme each day, all expressing a desire for more young people to attend. There is certainly room for more young people to be involved and we look forward to seeing even more new faces in the August programme.

For the August school holiday programme we have been lucky enough to gain the use of a mini bus during the day which will allow for greater flexibility in organising different and new trips away from the Youth Centre to places of interest including the beach, mud pools and commercial entertainment facilities such as Luna Park and the Fun Factory.

Other activities that will be offered in the August programme include indoor recreation such as table tennis, billiards, board games, art and craft, videos and lots of other fun activities with new and old friends. It will also be possible to

organise such things as basketball competitions with other community groups and the slight possibility of a camp for some participants.

The Centre will again be staffed by Ian, Christine, Roger and the project workers from the Youth Resource Centre — Tony and Merryl — who bring with them a wealth of experience and dedication to the development of young people in Kew.

In the past a fee of 50 cents per day has been charged and after negotiation with Council this fee will remain at 50 cents per day. Some activities may cost more, but the staff will try to keep extra costs to a minimum. This fee enables staff to replace and purchase new equipment for use by the young people attending the holiday programme.

The Youth Resources Programme staff are looking forward to a very successful Programme in the next few weeks and if young people wish to be involved in the development of activities for the programme, the opportunity comes in the form of the drop-in programme that operates each week on Wednesday and Thursday evenings. If enough young people are willing to help it may be possible to organise another under-18 Disco.

If anybody would like more information about this exciting holiday programme, feel free to contact Ian Patching on 862 2466 or the Youth Resource Centre on 861 7259 or the Kew Youth Centre on 861 7259.

## EQUIPMENT NEEDED

The Kew Youth Centre is looking for equipment to stock its kitchen. If anyone has any utensils they no longer need, donations would be most gratefully accepted.

We are looking for:

pots and pans      mixing bowls  
 cutlery              sandwich maker  
 crockery             frying pan etc. . . .

Please contact the Youth Resource Centre 861 7259, so that we can arrange for collection.

# UNEMPLOYMENT???



This month's feature article tackles an area that nearly all young people, and parents of young people, are facing in today's society — that of employment or maybe unemployment! In this article we aim to ease some worries and present some alternatives and explanations for coping with the situation of unemployment if it arises.

It is important to realise that there are NO magic answers to unemployment and that any of us may find ourselves unemployed when we least expect it.

However, it would appear that the major concern of unemployment is

that of Youth Unemployment. In Kew alone, there are 638 people unemployed according to Department of Social Security figures released in December 1983. Of these 50% are under the age of 25 years and 25% under the age of 20 years. Kew may be one of the luckier suburbs with a relatively low percentage of unemployed for the total population, but that does not remove the plight of those who find themselves unemployed.

Many people have heard expressions like "You can't get a job unless you have experience and you can't get experience unless you have a job."

There is little denying that this issue is the most difficult for young people just leaving school to overcome, whether you leave school at the end of a school year, or during the year, and often with unrealistic expectations of the workforce.

There are, however, several things that young people can do to help overcome their situation. When initially selecting a career, it is important to realise that you will probably not walk straight into that position. In today's society, it is increasingly

*Youth Pages continued on page 11*



# Kew Junction

**SHOPPING CENTRE**  
Lift-out Guide



Main Street, Kew.

Looking down at the Junction from Post Office.

Prints of historic photos in this supplement available from VIZ PHOTOGRAPHICS, 144 High St, Kew, 862 1971.

Gone is the horse drawn tram of 1890 but Kew has retained its friendly village atmosphere and charm — take a stroll through Kew Junction and marvel how convenient it is to shop there with over 80 retail shops offering a wide and comprehensive variety plus friendly service.

This old world charm is still retained in most of the buildings — take for instance the old ES & A Bank building, this lovely old building has been converted for a dual purpose, on one side **The Junction Male** menswear established for 12 years carrying a large range of local and imported men's clothing, shoes and accessories. It also offers a dinner suit hire service.

At the moment the Junction Male is holding its annual Winter Sale — genuine reductions, hurry in for a bargain now.

**Junction Male, 175 High St., 861 8340**

Right next door **Q Coffee House** is a popular meeting spot for a delicious cup of coffee and cake or if you prefer a hearty warming lunch to fight winter

chills. On your way out stop and browse through their tempting selection of imported chocolates, extensive selection of teas and have fresh roasted coffee ground for your needs.

Of course you can walk through to High Street from extensive parking at the rear of 175 High St, Kew.

★ ★ ★

Stroll further down High St, and notice a building that has been retained for its original use — **Boot About**.

Boot About of 145 High Street, Kew, has been serving the public at the same address for 35 years. In the near future Boot About will be joining THE

REDUCTION SHOP who at present have outlets at 190 Church Street, Richmond, and 200 Bourke Street, Melbourne. By joining THE REDUCTION SHOP they will be selling their footwear and ladies wearing apparel at greatly reduced prices. They will still retain the same high quality merchandise as before, stocking brands such as Taranto, Emy of Italy, Torretti, Cattleia just to mention a few, and fashion labels such as Mark Shaw, Bernini, Jump and many others.

Inspect for yourself, you will be pleasantly surprised.

## THE GENUINE WOOLREST SLEEPER

Test one for 21 nights... absolutely RISK FREE.

AVAILABLE FROM

**MATSON'S PHARMACY** / **Amcal Chemist**

167 HIGH STREET, KEW. 861 8443

**Nicholas Noall Ideas** at 173 High St., Kew is a unique little gift shop, that encourages people to just come in and have a browse. Their shelves are full of interesting imported and Australian made gifts and homewares, suitable for weddings, birthdays and anniversaries etc. Gift wrapping is free and rather special and laybys are welcome.

Parking is no problem — parking areas are evenly distributed for your convenience and kerbside parking is still available in the main thoroughfares.

Many shops have "walk through" facilities. The locations of car parking

facilities there are in Fenton Way car park on the south side of The Junction which is accessible from Fenton Way, Wellington St and Denmark St. The SSW and Safeway car parks on the north side which are accessible from Brougham St., Princess St. and Walpole St. and the Peel St. carpark.

Kew Junction has something for everyone.

★ ★ ★

The Andrews family have been supplying top quality meats to Kew and its families for five generations. Ron Andrews is justifiably proud of the butcher shop he inherited from his father and its good reputation.

The building that now is home to Andrews Butcher Shop was originally built as a butcher shop in the late 1800's and has its original reinforced beams in ceiling to take the weight of the animal carcasses

Andrews the Butcher apart from supplying a family's day to day needs also specialises in super sausages of all kinds — Beef, Pork, Vegetarian and continental (only natural herbs and spices used).

Andrews the Butchers, 129 High St, Kew, 861 8231 (easy walk through from rear car park) then cross High St and build good health.

★ ★ ★

Start today by treating yourself to some delicious and nutritious wholesome foods. There is no better way to good health than with wholesome natural fresh foods, rich in vitamins and minerals.

However, it is also time for people to realise that although foods are prepared as fresh as possible, they no longer contain all the vitamins, minerals and enzymes as they did years ago, so it becomes necessary to supplement our diets with these nutrients which we

fortunately still can buy in health food stores.

At Strawberry Fields Health Foods there is a wide selection of natural foods and a comprehensive range of vitamins and minerals to supplement your diet. **Strawberry Fields Health Foods**, 156 High St., Kew, 862 3060.

★ ★ ★

Where can you find Lily of the Valley? Tucked away from the bustle of High St at **The Junction Gardener**. On the seedling table you will find around 45 varieties of seedlings along with over 40 varieties of herbs and this is winter!

Indoor plants abound with prices beginning from \$1.00 upwards to grow in all sorts of places. Inside along with the fertilizers for just about anything are pesticides (low toxicity), pots, potting mixes and ingredients to mix your own.

Outside in the nursery is a kaleidoscopic collection of plants in such a small space. Come around to the Princess St carpark, just down from Murphy's S.S.W. and you may begin to appreciate the diversity of life at The Junction Gardener, ph. 861 5634.

(P.S.: From 1st Sept., open till 4.30 p.m. on Saturdays).

**Tessa**  
NATURAL BEAUTICIAN

- FACIALS
- NATURAL COSMETIC FACELIFT
- BODY MASSAGE
- WAXING
- EYELASH/BROW TINTING
- EYEBROW SHAPING

**132 HIGH ST., KEW**  
**PH 861 6577**

**DICKSON'S PHARMACY**

**121 HIGH STREET, KEW**

Prop: L. K. Reilly PhC, M.P.S.  
Prescriptions delivered

Ear piercing/studs provided	<b>\$9.95</b>
Passport photos/4 for	<b>\$6.50</b>
Pregnancy testing —	<b>\$8.00</b>

mr. finlays

**penthouse**

contemporary design

the **biggest** gift shop & variety in kew

**181 high street, kew**  
**phone: 861 9613**

	<b>SUPER SPECIAL</b>	<b>CANE LAUNDRY BASKETS</b>
	<b>COLES</b>	Oval/Handmade Reg \$9.28 now <b>\$5.98</b>
	<b>WHILE STOCKS LAST!</b>	<b>TONTINE "ORANGE LABEL" PILLOWS</b> Reg \$11.99 now <b>\$7.98</b>
		<b>MEN'S RIO SOCKS</b> Reg \$2.28 now <b>\$1.98</b>

**Hair Design**

**/861 5964/**

**SCHOOL HOLIDAY SPECIALS**

HIGH SCHOOL GIRLS CUT & B/W	<b>\$10</b>
HIGH SCHOOL BOYS CUT	<b>\$8</b>

**183A HIGH STREET, KEW**

**Records & Video**

**133 HIGH ST., KEW**  
**OPEN 7 DAYS**  
**861 8272**

Top range of VHS movies from **\$3.00 OVERNIGHT**

Large selection of records, cassettes, compact discs for sale  
*Blank audio & video tapes*

3 SHOPS FROM PRINCESS ST.

**MINDALIN**

- UNUSUAL CLOTHING
- HAND MADE JEWELLERY
  - CANE WARE
  - RUGS
- WALLHANGINGS

AND LOTS MORE!

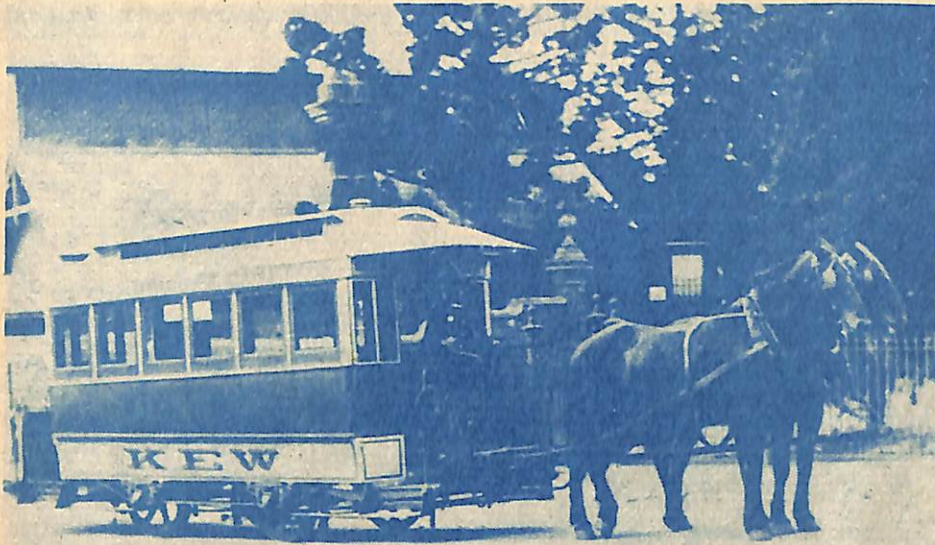
**117 High St., Ph 861 5634**

**PEACOCKS QUALITY CAKES**

**137 HIGH ST., KEW, 861 8119**

Now available in a wide range of flavoured pies, also specialising in personalised birthday & special occasion cakes





*Serviced Kew from cemetery to Kew tram depot.*

**Tascano**

Limes, custard apples, plantain, mangoes from the Philippines, NZ tamarillos, watercress, fresh herbs, a variety of lettuces, celeriac, rockmelon from Darwin, fresh dates, strawberries all year round — you will find these sometimes rare and exotic goodies whether they are in season or not!! **Toscanos Fruit Supply** 217 High St., Kew always seem to have what you are looking for.

The Toscano family are something of a legend, having supplied the families of Kew with good value, fine quality as well as the unusual for the past 34 years.

Stop and enjoy the old fashioned service and good value at Toscano Fruit Supply, 217 High St., Kew.

Mainly known for its exceptional range of cheeses but also specialising in various other gourmet foods. **Fred Youngs of Kew** is the inspiration of Rosanna and Tom Traficante.

They stock every kind of cheese you would want mostly imported — beautiful fresh French bries, boccancini, fresh parmesan, ricotta and a wide range of Swiss, German and Italian cheeses. They also carry a good selection of meats, including salami, pastrami, proscutto, smoked pork, pates, fresh pasta and risodi vercelli (special risotto rice).

Rosanna says although Fred Young's emphasise gourmet foods many of the goods are in fact cheaper than those you would buy in a supermarket. And nothing is pre-sliced. It's all done while you wait.

**LANGKNITT**

197 High St., Kew  
861 8472

Frocks — Sportswear  
Baby Wear — Dressing Gowns  
Lingerie — Manchester  
Wool & Haberdashery  
*At competitive prices  
Lay-by's welcome*

**SEMPLÉ & DENNIS  
NEWSAGENT &  
TATTSLOTTO**

**OPEN** Mon-Thurs 6 am-5.30 pm  
Friday 6 am-6.30 pm  
Sat 6 am-12 noon

For all your needs in gifts,  
paperbacks, cards, office &  
school stationery

**163 HIGH ST., KEW**

**SPEZZA'S  
MEAT SALE**

Full Porterhouse  
Steak.....\$4.99/kg  
Full Rumps .....\$4.99/kg  
BBQ Lamb Chops 3 kg at...\$1.49/kg  
Roasting 4 Qtrs Lamb.....\$1.39/kg  
**169 High St., Kew 861 8540**

**COTHAM  
SHOE  
REPAIRS**

*TRUST THE MAN BEHIND THE REPAIR*  
See our large range of travel goods & Australian  
souvenirs

ALSO INSTANT KEY CUTTING  
**40 COTHAM RD., KEW 861 6813**  
CNR QUEEN ST

—: **SOLICITOR** :—  
**MICHAEL O'BRIEN**  
223 HIGH STREET, KEW — 862 3155  
CONVEYANCING — PROBATE — WILLS  
Quotes given

**VIDEO UPDATE**

NO DEPOSIT **\$3** NO JOINING FEE

OVERNIGHT

**2 COTHAM RD., KEW 862 1021**  
88 Burwood Rd., Hawthorn, 818 5211

**For Men and Women**

the most  
comfortable  
SHOES IN  
THE WORLD! **861 7482**



**Neville's Shoes**

12 Cotham Rd., Kew Junction



**BISTRO MEALS — LUNCH & DINNER**

Fine Food  
in a relaxed atmosphere  
Chef Phillip Dale

for reservations **861 8023**  
**185 HIGH ST., KEW**

FOR ALL YOUR ELECTRICAL,  
TELEVISION AND VIDEO  
REQUIREMENTS

SALES AND SERVICE

**DAWSONS  
RETRAVISION  
DISCOUNTS**

239 HIGH ST., KEW  
861 8104 861 9381

**KNIGHT'S PHARMACY OF KEW**

C.J. & P.M. KNIGHT, Ph.C. M.P.S. 16 COTHAM RD.  
OPP KEW POST OFFICE TELEPHONES 861 5017 & 861 8298

**DISPENSING  
PHARMACISTS**  
and agents for cosmetics by

Lancome  
Shiseido  
Elizabeth Arden  
Cyclax  
Harriet Hubbard Ayer  
and fragrances by  
Cacharel  
Christian Dior  
Fidgi & Arpege



BABY NEEDS — GIFTS '7 HOUR' FILM PROCESSING



High St, Kew — looking up from junction.

**KEW FRUIT SUPPLY**  
(A. & N. MORABITO PROP).

14 Cotham Road,  
Kew, 3101. Phone: 861 8339

Did you know that Tony and Nicole deliver free of charge your fruit and vegetables to your home?

Fresh fruit and vegetables are brought in daily, so come and see our great range of season fruits, our quality and prices are hard to beat!

We have super value specials every day of the week! Your satisfaction is our prime concern!

The happiest small business people are often those with a small investment, no employees and a modest ambition, like Mario and Vince Hairdressers. Mario has been cutting hair in Kew for 15 years. He was joined by Vince 10 years ago. They both came from the same town in Italy and their families are good friends.

Mario started his apprenticeship at the age of 11 years after school. When Mario came to Australia 25 years ago he worked for five years at Peter Jackson Hairdressing Salon and Vince at Buckley and Nunn for 7 years. "You must show you are really glad to look after customers, and we do feel that way" says Vince. A barber is like a doctor — clients tell you their problems and you have to remember the details for next time. For bookings 861 5447.

Bonaparte Men's Boutique at 195 High St, Kew now offers the discerning buyer a

fine range of top quality local and imported clothing. The staff are fully trained in all aspects of fitting and co-ordinating the wardrobe.

At Bonaparte's you will find suits and sportswear from Louis Feraud and Sidi of Italy, Greiff of Germany and their own label is locally manufactured. Top quality leather shoes by Sioux Lloyd and Karandonis and other Italian brands make up a large range of footwear.

Bonaparte's place the emphasis on service, quality and investment dressing that will satisfy the most discriminating tastes.

Where can you find Lily of the Valley? The Junction Gardener in the Princess St. Car park (opp Murphy's SSW). The area is small but the variety is large: indoor plants, outdoor plants, umpteen varieties, seedlings over 45 varieties \$1.40, herbs over 30 varieties \$1.25. See their fernery open till 4.30 pm Sat from 1st Sept. Rear 117 High St., Kew, 861 5634

**Peters  
Chicken Bar**

- Freshly roast chickens (with special herbs)
- Specialising in roast turkeys & ducks ● Special discounts for your parties

861 6353

THIS WEEKS SPECIAL FREE 6 ROAST POTATOES WITH EVERY TWO ROAST CHICKENS YOU BUY

*Functional Decor*

Specialising in Drapes, Bonded Blinds, Bedspreads & Wallpapers

FABRIC REMNANT

CLEARANCE — AUG 9, 10, 11

112 High Street, South Kew,  
861 5593

**RAY'S QUALITY  
MEATS AUGUST  
SPECIALS**

Rolled Seasoned Lamb **3.99** kg

Yearling Topside 5kg lots **3.99** kg

Yearling Round Steak (Fry or Grill) 5kg lots **3.99** kg

183 HIGH ST., KEW  
FREE DELIVERY 861 8212

**KEW GALLERY**

TOM ROBERTS, Director

26 COTHAM ROAD, KEW 3101.

PHONE 861 5181.

QUALITY AUSTRALIAN PAINTINGS  
BY ESTABLISHED ARTISTS.  
FOR PLEASURE AND INVESTMENT  
VALUATIONS CARRIED OUT  
WANTED TO PURCHASE  
AUSTRALIAN PAINTINGS

**Bob Stewart Mensland  
SCHOOL HOLIDAY  
SPECIAL**

STUDENT "LEVI" JEANS  
207 HIGH STREET, KEW, 861 8429

\$19.95 now

**\$12.50**

important to give serious consideration to accepting **any** position as there are elements of any job that relate to another job, no matter what the nature of the work is.

Looking for a job is not an easy task, and young people today should not expect jobs to come looking for them. Although this may have been the case years ago, it is certainly not that way today. Young people should not leave school thinking that they will have a few months holiday before they "start working", unless they want more than a few months holiday.



### WHERE TO LOOK

There are four main places where people can start their job search. The first is the Commonwealth Employment Service. Next comes the newspapers, particularly *The Age* on Wednesdays and Saturdays. Don't forget your local papers either because they are where you may find jobs that aren't too far to get to on public transport.

If you have any idea of the type of work that you want to do, then contact employers yourself. It often takes little more than a phone call to the Personnel Manager, and remember that large companies don't advertise positions vacant as they fill vacancies from people who have approached them. Finally, your family and friends often are in a position to offer at least casual work if you ask them.

### TRANSITION . . .

Young people go through a transition period immediately after leaving school and often do not understand what is happening to them as they experience a whole range of new emotions. Leaving school means breaking a routine that has been with them for

their entire school life. Suddenly there are no more classes or teachers prompting slow movers to complete tasks that have been set, and there is a need to learn to adjust to life beyond the classroom, where suddenly young people find themselves in a situation where they have to make decisions about everything that they do with their life and their time, and also accept the responsibility for the results of those decisions, even if they don't work out as expected.

Recent studies have shown that young people who find themselves unemployed immediately after leaving school will sometimes find it very difficult to adjust to this new way of living, and although we can be assured that eventually they will learn to live comfortably in an adult society, sometimes the road is not so smooth.

The transition from school to work, or non-work, is a big step but can be eased with the support and understanding of family and friends. The most important thing for all to realise is that it is not necessarily the fault of the individual that he or she is not able to secure full-time employment.

Behavioural patterns that young people seem to suddenly adopt do not always mean laziness and require patience and understanding on the part of the young person's family. Behaviour of this kind will right itself provided the young person understands that it is part of a developmental stage which will, provided he or she is aware of it, rapidly become a thing of the past and that it is a thing that does need to change if he or she is to be accepted into the workforce.

Young people need to learn to manage their own time in the most productive and beneficial way. This can be achieved through a variety of means, the most important of which is developing a routine for themselves similar to if they were at school or working.

Here are just a few of the changes that young people will normally experience when leaving school with the intention of attempting to enter the workforce. It is vital that young people have the full support of their families and friends as they ex-

perience this major step towards adulthood. It is important that young people can communicate with their families and friends without being made to feel inadequate. It is equally important for young people to express their feelings, frustrations and progress with their families, so that they may in turn support them.

### WHO CAN HELP?

There are several organisations in the Region which offer various support services for unemployed young people.

The first of these is the Commonwealth Employment Service (CES), which for Kew residents is located at 979 Burke Rd., Camberwell. Phone: 811 9222. The CES offers careers advice and has a large collection of JOB vacancies. It is also the place where you register as unemployed, a necessary step for receiving unemployment benefits. Once you have registered with the CES it is necessary to attend the Department of Social Security (DSS) at 697 Burke Rd., Camberwell, Phone: 811 9111, from where your benefits will be distributed.



In Kew, there is a programme which offers support to unemployed young people. This programme helps young people to apply for jobs and chase up some more obscure leads in their job search. It also offers personal support as people move through their transition period, and helps out with problems that may arise with places such as the CES or Social Security. The programme operates on Tuesday, Wednesday and Thursday afternoons from 12.00 to 3.30 pm and is followed by a leisure programme from 3.30 to 5.00 pm, at the Kew Youth Centre, 3 Walpole Street, Kew, Phone: 861 6281.

# THINGS TO DO IN KEW

## THE GAP

This is a youth group at St. Hilary's Church for people from Year 9 upwards. The group meets on Friday evenings from 8.00 to 10.00 pm. More information is available from Russell Downie 80 1236. This month's activities include Games with a Difference on August 3rd, and they advise that you wear waterproof gear. On August 10th the group will be going to Beaumaris, and on August 17th there is a coffee shop.

## TEEN CLUB

Meets at the Kew Baptist Church on August 3rd and 17th. Details of their activities can be obtained from Laurie or Wendy Barton on 861 5318.

## KEW YOUTH CENTRE

The Youth Centre at 3 Walpole St. is open on Wednesday and Thursday evenings from 6.30 to 10.30 pm and offers a general Drop-In programme. They are looking for young people at the moment who might like to help organise an Under-18 Disco.

## HOLIDAY PROGRAMMES

The Kew Youth Centre will again be operating a Holiday Programme at 3 Walpole Street. Details of this programme are in a feature article on page 5 of this issue.



# A BIT FURTHER AFIELD

### August 5

Open Day — Monash University, 11 am to 5 pm. Contact Vicki Thomson, 541 0811 ext. 2002.

Open Day — Ballarat College of Advanced Education, 12.00 to 4.00 pm. Gear Avenue, Mt. Helen, Ballarat. Contact Beverley Sparks (053) 30 1800.

## THINGS TO DO IN THE HOLIDAYS

Try swimming at the State Swimming Centre, Batman Avenue, Melbourne. Open 11 am to 3 pm.

After a swim, you could go Bowling at the Southern Cross Hotel, on the corner of Bourke Street and Exhibition Street. It's open until midnight every day.

Take a trip on the train to Belgrave with some friends and ride the Puffing Billy. Don't forget your picnic lunch.

If you are feeling cultured, you could join a tour of the Concert Hall and State Theatre. Tours depart every half hour from 10 am to 4.30 pm. It really is worth a visit.

These are just a few suggestions to get you thinking. Remember there is enough to do in Melbourne that you have no need to sit at home being bored.

## IN BRIEF

The staff and participants of the Kew Youth Centre would like to thank Safeway, Strawberry Fields, The Hot Bread Shoppe, Natural High and Peacock Cakes for their kind donations to its Unemployment Programme.

School holidays are from Friday 17th August to Monday 3rd September. Enjoy yourselves and have a good rest before your exams start.

## DEADLINE

The closing date for articles and events to be included in the Youth Pages is the 5th day of the preceding month. This allows time for us to compile our information and still meet Kewriosity's editing deadline. All correspondence should be directed to City of Kew Youth Resource Centre, 283 High Street, Kew. Enquiries can be made to Robyn Molloy on 861 7259.

## SURVIVAL ENGLISH

Ten years ago Carolyn Burns was attending the Denmark Street Infant Welfare Centre as a mother of a young child.

So were other women, and, reflecting the high migration levels of the time, English was not the first language of any of them.

The problems caused by an inability to communicate are obvious and Carolyn decided that, with time and assistance from Council and the Health Department, survival English classes could improve the lot of both the infant welfare sister and her clients. Over time, many women have gone through the class and now the sessions are open to men as well.

Carolyn, by now extremely experienced, says that the classes suit beginners to intermediate.

She uses recognised methods and texts, along with the invaluable large blackboard, to instil the basics of our very complicated language.

Carolyn adapts what is taught, and how it is taught, to the needs of current course members.

She says that many women do the course so that they can provide "background" support for their families.

Background support involves things like attending parent-teacher nights and becoming involved in other activities with their more rapidly bi-lingual children and grandchildren.

People also enjoy the social contact provided by the class and range in age from 19 to 72.

The classes take place every **Monday (except school holidays) from 9.45 a.m. to 11.45 a.m.** at the Infant Welfare Centre on the corner of Wellington & Denmark Streets.

They are **free**, sponsored by the Adult Migrant Education Service as well as Council and the Health Department.

If you would like to bridge the gap between your needs and the language you must learn to do this or, as is more likely, if you know someone in this position, why not come along or encourage that friend to.

You can contact Carolyn Burns on 80 3803 for more information.

## LIABILITY

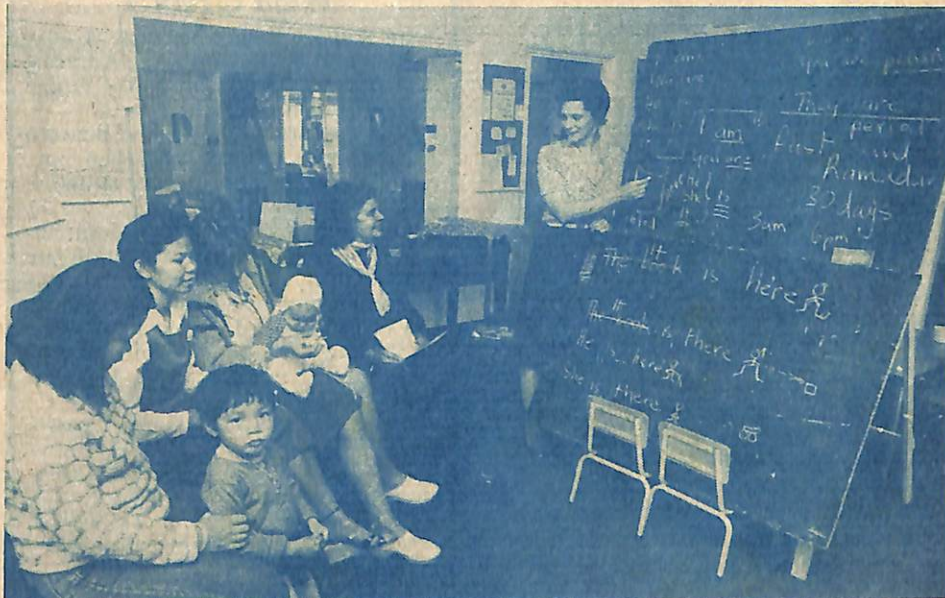
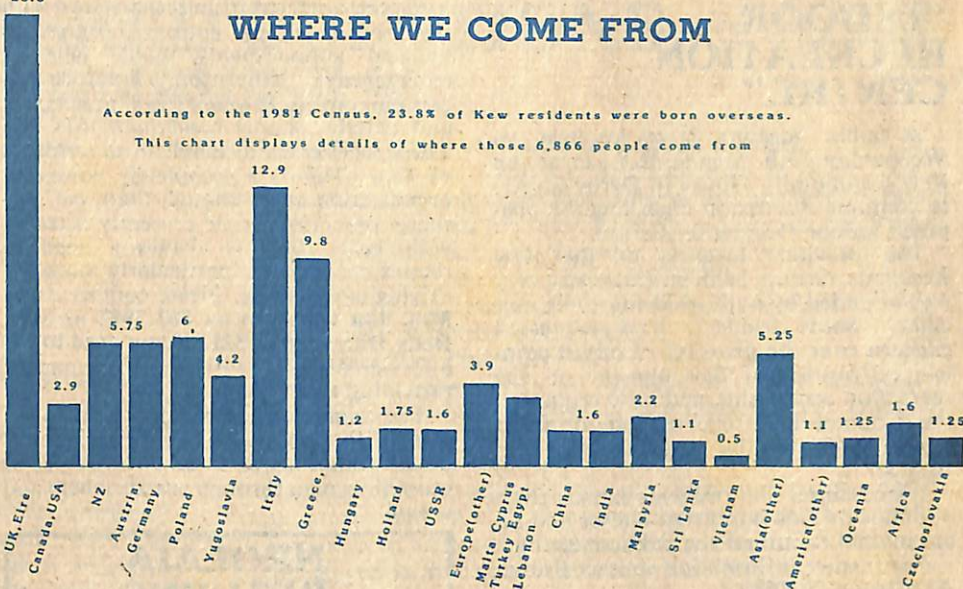
Victorian Parliament recently passed the Occupier's Liability Act which simplifies and modernises the law governing the **liability of occupiers of land for harm suffered by people who come onto their land.**

The general thrust of the updated legislation is that concepts such as "trespassers" have now been reviewed and replaced by the general principles of the law of negligence as they apply to the land owner.

Land and home owners are advised to check their insurance cover to make sure that they are adequately protected.

## WHERE WE COME FROM

23.3



## MUNICIPAL ELECTIONS

This year there will be an **election in College Ward**, which is the area bordered by Barkers, Burke, Cotham and Denmark Roads. Election day is **Saturday the 4th August** and voting takes place between **8 a.m. and 6 p.m.**

Polling Booths are situated at the Municipal Offices in Charles Street and St. Hilary's Church Hall in John Street.

**Candidates for College Ward are:**

**NOEL GEOFFREY SELETTO  
IVAN WADE**

**Voting is compulsory.**

★ ★ ★

The following councillors were re-elected unopposed:

**KAYE COLE PROSPECT WARD  
JAMES TUTT STUDLEY PARK WARD**

and the following candidates were elected unopposed:

**CHESTER KEON-COHEN CENTRAL WARD  
ROGER STREETON NORTH WARD**

If you want more information about the 1984 Municipal Elections, contact the Municipal Offices on 862 2466.

## “INDOOR RECREATION CENTRE”

A public meeting is to be held on Wednesday 15th August at 8 pm at the Kew Community House in Derby Street, to continue discussion regarding the proposed indoor Recreation Centre.

The previous meeting of the Kew Residents Group held in June was very well attended by both residents and councillors. Some residents have expressed concern over the prospect of mixed commercial/residential development on the recreation centre site, and have requested the Council investigative committee to report back to the residents on 15th August.

It is essential that residents express their opinions on this important matter and all are invited to attend the public meeting.

For further information contact Robyn Armstrong 80 5689.

## NEIGHBOURHOOD WATCH ESTABLISHED IN KEW

Following public meetings and at the initiative of the Victoria Police, a Neighbourhood Watch zone has now been established in Kew.

A spokesman for the Kew Neighbourhood Watch said that the concept underpinning the programme is that of residents working with one another to develop a high sensitivity to suspicious occurrences taking place in their area which are promptly reported to the Police for investigation and attention.

Similar programmes in the United States, Canada and, more recently, Frankston in Victoria, have proved effective in reducing urban crime, particularly burglary on private houses.

The Watch Programme in Kew is being supported by Kew Council which is providing facilities for the publication of a monthly newsletter in the Watch zone, assistance with the erection of identifying street signs and the provision of meeting facilities at the Civic Centre. The Watch zone in Kew is bounded by Harp, Burke, Cotham and Normanby Roads. Street signs identifying the Watch area will shortly be erected.

Enquiries concerning Kew Neighbourhood Watch should be directed to Mr J.L. Webb, Area Co-ordinator, Ph: 665 7755.

## SACRED HEART CARING GROUP

Established over five years ago, the Sacred Heart Caring Group enjoyed a very active year in '83/'84. Over 2,000 tasks were performed by the very generous and willing band of volunteers.

Services offered include assistance with transport to shops, outings, library and medical appointments, home help in emergencies, babysitting, interpreting, companionship through visits to the sick and elderly, simple handyman jobs etc. **These services are available to all residents of Kew.** This is a completely voluntary organisation and although there are currently over 150 people presently listed as volunteers, there is always a need to recruit new people, particularly those for driving and visiting. Please contact either **Mrs. Jan Coleman on 861 7952 or Mrs. Betty Daly on 861 5217** if you need to use a service offered or if you can be part of providing that service.

The original vision which prompted the start of the group and which continues to be its strength, was to take Christ out to our fellow man through practical help and caring.

## NEOLAIA RETURNS

In August 1983, Neolaia, a play written and directed by Greg Andreas, ran to a sellout season at the Organ Factory in Clifton Hill.

The play deals with the love between a Greek girl and an Australian boy, and the repercussions of their situation on their families.

The complex issues of racism, integration and cultural alienation are dealt with in strong and simple terms so that all members of the community can identify with the play itself while recognising its broader significance.

Performance dates: 2nd, 4th, 9th, 10th, 11th August.

At: 8.15 p.m. Glass House Theatre R.M.I.T.

Tickets: \$5.00; \$1.50 unemployed/pensioners.

Bookings and enquiries: 419 8093.

## KEW HISTORICAL SOCIETY — HAPPENINGS

### JULY MONTHLY MEETING

Rev. Aubrey Quick was the society's guest speaker on Wednesday 11th July. Rev. Quick gave a very well-researched and colourful presentation of his family's history in Kew. His forebears (the Dericks and John Quick) were amongst the earliest settlers in Kew and their property included land between Cotham Road and High Street, stretching back to Mary Street.

### RIPPON LEA TRIP

A guided tour of "Rippon Lea" has been arranged for Wednesday 1st August. Those interested should meet within the carpark of the Kew Town Hall at 12.45 pm. (The tour will commence at 1.30 pm.) The cost of the trip will be \$2.50 and \$1.00 for pensioners.

### AUGUST MONTHLY MEETING

Gwen McWilliam of the Hawthorn Historical Society and author of "Hawthorn Peppercorns" will be the society's guest speaker on Wednesday 8th August. The meeting will be held at the Manchester Unity Building, Union Street, Kew, commencing at 8.00 pm.

### LIBRARY DESK

Residents are reminded of the society's contact desk at the Kew Library, Mondays from 2 - 4 pm. Society stationery and tour booklets are available from the desk.

**Philip Barnes**  
Kew Historical Society  
Phone: 819 3118

## VICTORIA'S 150th: OPENING OF 150 PRIVATE GARDENS

One hundred and fifty private gardens from around the State will be open to the public as part of Victoria's 150th Anniversary celebrations.

The gardens to be opened were suggested as suitable by the National Trust, the Burnley Gardens, and garden clubs throughout Victoria.

Details of the gardens will be published in a booklet to be made available during the Anniversary year. The booklet will give the location of the garden; the name of the owners (if they wish to reveal it); a description of the garden identifying major plant groups of interest; the garden history and style; interesting views and size; and the two days the garden will be open.

Invitations to open up gardens have been sent throughout Victoria, from Brighton to Bright, Monbulk to Macedon, South Yarra to Swan Hill. Some of the gardens will already be familiar to the public, like the Coora Cottage Herb Farm in Westernport Bay. Others are private gardens never before seen outside a circle of family and friends.

One of the great old country gardens to be opened up is 'Delatite' in Mansfield. The owners describe it as: "A country homestead garden which has evolved from a pioneer type garden containing English fruit trees and shrubs planted in the 1860s. The garden presently contains many interesting conifers, rhododendrons and flowering shrubs, as well as a formal rose garden and English bluebell wood."

A more modern garden will be opened by the lake in Benalla. This is the garden of "Woolleen" which was designed by Edna Walling in 1939. It is triple terraced to the lake at the rear and has typical Walling plantings including birch trees, Chinese elms, magnolias and camellias. The garden has views across the lake of the Benalla Art Gallery and Botanical Gardens.

Many of the gardens will be open in spring and autumn when they can be seen to maximum effect.

**John Patrick, 810 1511**

# COMMONLY ASKED QUESTIONS — AND ANSWERS



## Where is the Council's Garbage Tip?

It is located in the City of Heidelberg, on the corner of Banksia Street and Waterdale Road. Opening hours are between 8 a.m. and 12 noon every day of the year, excepting Christmas Day and Good Friday.

## Where is the Council's Dog Pound?

It is located in the City of Doncaster & Templestowe, at the junction of Blackburn Road with the Heidelberg-Warrandyte Road (Melway Ref. 34 D3) — telephone 846 3137 between 9 & 11 a.m. and 3 & 5 p.m.

## Who is responsible for the Yarra Bend (Studley) Park?

The Yarra Bend Park Trust. Contact the Secretary/Manager: Mr. Terry Lanham, P.O. Box 103, Fairfield, 3078. Phone: 481 0171.



## Where do I get rid of excess bottles and papers?

At the Holy Trinity Recycling Depot, 1A Peel Street, Kew.

## Who are the Local Members for Kew?

Mrs. Prue Sibree, M.P., 95 Cotham Road, Kew. Phone: 80 5898.

The Hon. Mark Birrell, M.L.C., 325 Camberwell Road, Camberwell. Phone: 813 3313.

The Hon. Haddon Storey, Q.C., M.L.C., 95 Cotham Road, Kew. Phone: 80 5898.

## Who is the Federal Member for Kew?

The Hon. Andrew Peacock, M.P., 1173 Burke Road, Kew. Phone: 80 6024.



## How do I apply for Australian Citizenship?

Contact the Department of Immigration & Ethnic Affairs, Commonwealth Centre, Cnr. Spring & Latrobe Streets, Melbourne, 3000. Phone: 662 2011.

## What kind of child care services are available in Kew?

There are four private childminding centres in Kew. Contact as per Children's Section in the Kew Community Directory.

OR Family Day Care Scheme: This is a Day Care Scheme catering for full-time, occasional or emergency care. Carefully selected caregivers mind small groups of children in their own homes (usually 3-5). The Scheme is run jointly by Kew and Hawthorn Councils. Contact the Co-ordinator, Ms. Kim Henderson, Hawthorn Council, phone 819 2444.

## How do I enrol my child in a kindergarten?

There are seven Council kindergartens in Kew. All provide for 4 year olds. Enrolments are accepted from the child's second birthday by Kay Walters at the Kew Municipal Offices each Tuesday evening between 6 pm and 8 pm. Or you can phone 862 2466.

Private kindergartens: there are only those attached to the private schools in the area.

## What sporting clubs are there?

Sporting clubs are all listed in the Recreation/Sport/Leisure section of the Community Directory.

## How do I hire a sporting ground?

Grounds are usually hired on a seasonal basis. Applications are invited by advertisements in the local papers, and grounds are allocated by Council. Contact the Recreation Officer at the Municipal Offices for details.

## How can I use the Traffic School?

The Traffic School is available to kindergartens, school groups during school hours. Contact is made via the Traffic School Teacher, Ms. Debbie Rotheram, c/- Traffic School, Phone: 80 4831.

For public use — no private parties are held at the Traffic School. The School is, however, open each afternoon during the School Holiday Programme and anyone is welcome to attend for a small fee.

## Are there any recreation programmes for older adults in Kew?

Courses are offered for a duration of a term, three terms per year. Some courses previously offered have been: Yoga and Relaxation; Keep Fit; Swimming; Tennis. These courses are advertised in the local papers approx. one month before courses commence. Enrolment is per completion of a form available from the S.D.D.

Charges range from \$22-\$42 depending on course, including pensioner discounts.

Any older adult of 60 years or over is entitled to attend and is encouraged to contact Peter Butler or Leanne Evans at the Municipal Offices on 862 2466.

## How do I join the Kew Library?

Just call into the Library, fill in a membership card, show proof of your identification and you can borrow a book straight away. Your identification must contain a current address.



# KEWRIOSITY EDITORIAL GUIDELINES

## INTRODUCTION

The purpose of developing editorial guidelines for Kewriosity is ultimately to enable Kew residents to submit articles, photographs and graphics that will be of interest to their fellow residents. Without some guidelines it is sometimes difficult for contributors to know how many words they can write and what they can say. The lack of a policy also puts the Editorial Committee in a difficult position when too many articles are submitted or if they feel it is necessary to change the content/wording of a particular article. Therefore, the Editorial Committee met recently and drafted the following Editorial Policy.

## GUIDELINES

1. The Editorial Committee encourages contributors to write positive articles about what they are involved in rather than negative articles about the activities of others.
2. Articles containing opinion or comment will be accepted as long as the article does not contravene other editorial guidelines. Articles which do contain such comment will be clearly defined as not necessarily being the views of the Editorial Committee or

the City of Kew. Such articles will also be accompanied by a statement offering other Kew residents the right to reply or submit other articles. Every attempt will be made to publish replies in the same issue as the article to which the reply relates.

3. The Editorial Committee will not publish articles that are racist, sexist or personally abusive in nature. Nor will they publicise activities of an illegal nature. If, in the opinion of the Editorial Committee, material is libellous or defamatory, the material will not be published.
4. The Editorial Committee retains the right to correct grammatical and spelling mistakes without consulting the contributor. The Editorial Committee also retains the right to make minor changes in style on the above basis. Articles considered by the Editorial Committee to contravene Guideline 3 shall be returned to the contributor with a request that he/she make the necessary changes. If the writer does not wish to change the article then the Editorial Committee retains the right not to publish that article. The same principle applies to articles which exceed the suggested maximum length.

5. The Editorial Committee has decided that the content of the Community Pages can be divided into four categories. These are: Articles; Letters; Reports; and Notices. The Editorial Committee suggests that:

- Articles should be no longer than 400 words;
- Letters should be no longer than 200 words;
- Notices should be no longer than 100 words.

The Editorial Committee considers Reports to be those contributions which deal with the results or proceedings of activities such as meetings and Notices to be those contributions which publicise forthcoming events.

6. If too much copy is received in a particular month then contributions which deal with immediate issues shall be given priority over those which will still be relevant the following month. If there is still too much copy the decision will be made on the basis of style and on the Editorial Committee's opinion of what is of greater interest to Kew residents.
7. The Editorial Committee is under no obligation to publish any material submitted.

## KEW AMATEUR SWIMMING CLUB

Swimming this winter will be at Bulleen Pool, Bulleen Road (just off the Eastern freeway) on Sunday nights. There will be two sessions: 6.00-6.45 p.m. and 6.45-7.30 p.m. both taken by coach Katrina Opie.

If you are a new member or a younger member (13 and under) please join the first session.

The first term started on June 17 and runs for eight weeks until August 5. The cost is \$15.00 per swimmer for the eight weeks (this includes entry to the pool) or \$2.50 for a single session. Where there are more than two swimmers in a family, the first term cost for the third and subsequent members will be \$12.00. These fees are to be paid to either Don Werner or Daniel Stutt at the pool on entry.

The second term will commence after school holidays on September 9. Fees will be reviewed at the end of the first term. Our aim is to break even on club swimming, so the more the number of regular swimmers the less the charge.

Parents of swimmers are asked to help whenever they can to taxi team members, act as officials and support our new coach and team manager, Katrina Opie.

We need more active swimmers, so please encourage your friends at school and at home to join us. Let's make the 1984/85 season a winner for Kew!

For further information contact Sue Natoli, 898 4582.

## KEW BOWLING CLUB

The 104th Annual General Meeting was held on 18th May, 1984.

Following normal business and election of office-bearers, trophies were presented to the winners of club events.

Office-bearers Season 1984-85 — President: J. Wood; Immediate Past President: P.G. Kelson; Vice-Presidents: G.W. Hiscock, J.H. Gervasoni; Honorary Secretary: J.M. O'Shaughnessy; Honorary Treasurer: W.L. Morton; Honorary Auditor: P.D. Toohey; Committee: L. Clogan, D. Rojo, A. Thomson, J. Haller, M. Gay, N. Fennell, T. Enright; Bowls Secretary: R.A. Gillies; Selectors: A.E. Daymond, J.G. Mason, P.J. Ryan; Coach: Ray Phillips.

Club competitions: The results are set out beneath and we congratulate the winners.

Club Singles Championship: Winner M. Jeffers, runner-up J.D. Wood.

Club Pairs Championship: Winner M.

Ellis-M. Gay, runners-up: J. Coleman-B. Samuel.

Minor Singles Championship: winner L. Kitson, runner-up P. Ryan.

Handicap Singles: winner R. Harrison, runner-up J. Stuble.

President's Pairs: winner B. Hearn-M. Jeffers, runners-up H. Gallagher-J. Mason.

## CHILDMINDING

Please note that the Community House only offers limited child care for parents who are at the house undertaking an activity.

The Community House does not have the room or the staff to offer any other child minding services.

## NEXT ISSUE

The deadline for copy for the September issue is the 10th August. Please send your typed contributions to "Kewriosity", P.O. Box 42, Kew, 3101 or drop them in to the Information Officer at the Municipal Offices.

*Prepared by the City of Kew Information Officer and the Kew Community Editorial Committee.*

*The views expressed in the articles appearing in this newsletter are not necessarily those of the City of Kew or of the Kew Community Editorial Committee.*