



# KEWRIOSITY

Editor: Thea Sartori C/o Municipal Offices,  
Charles St., Kew, 3101

DECEMBER, 1983

## ACTION TAKEN ON SECURITY OF CHILDREN

A community awareness programme, aimed to assist the security and safety of children, is the basis of the Safety House Programme now well underway in the Kew area.

The programme is simple. Houses will be identified by an appropriate sign, well known to the school children. Parents have the option to advise their children that, if in trouble, they can run into one of these houses. Should this occur, the householder has appropriate instructions. The first of these is to **ring the police** immediately. This will assist the police to arrive at the scene quickly.

Education of the children is of

prime importance. Teachers will educate the pupils, as will the police, who visit the schools as part of their normal safety awareness programme. In addition a letter giving details of the programme is sent to all parents.

A considerable amount of effort has been put into getting the programme off the ground. Initially a survey was undertaken to assess the interests of parents of children attending the Kew Primary School. The response was inspiring, with replies from parents offering great support. Already nearly 50 houses have been approved as Safety Houses, and this number is expected to increase as the local community becomes more aware of the existence of the programme. Naturally, all houses in the area will be constantly surveyed to en-

sure that the identification has not been removed from approved Safety Houses or placed on non-registered houses.

The programme commenced in October this year.



Children from Kew PS, with Safety House sign, and members of Police Force who addressed them on 'Stranger Danger'.

## YOUTH VENUE NEEDED

The council is searching for a venue to run its teenage holiday programmes over the Christmas/Holiday period.

The success of the programme is reliant on a centre which can offer the following:

- An office for administration;
- A large room for indoor table games, table tennis, snooker, etc., and refreshment area;
- A quiet room for passive games and interviews;
- Storage room — lockable for equipment;
- Two toilets (at least) and a washroom.

The centre would also need to be close to public transport and preferably have an area large enough for outside activities.

Council realises there is difficulty in such a venue being available, however if you have any suggestions or a venue please contact Peter Butler, Municipal Recreation Officer, at the Municipal Offices on 862 2466.



## EXTRAORDINARY ELECTION

### Central Ward

An Extraordinary Election for the **CENTRAL WARD** of the City of Kew will be held between the hours of 8 am and 6 pm on **Saturday, December 3, 1983.**

At the time we went to press, four (4) candidates had nominated:

1. BROWN, Peter Lawrence
2. GLASSON, Rosemary Anne
3. MINSTER, Barry Edward
4. MONTALTO, Michael

#### Polling Places

1. Glendonald School, Marshall Avenue
2. East Kew Uniting Church, Normanby Road.

Central Ward is the area bounded by Burke Road, Cotham Road and High Street.

Postal voting facilities are available if you are unable to personally vote on election day, and **VOTING IS COMPULSORY.**

All enquiries regarding the election should be directed to the Municipal Offices, 862 2466.

**SEE INSIDE FOR HOLIDAY PROGRAMME ACTIVITIES**





*Leonardo with his trainer Kelsey Conyers.*

## POODLE GUIDES

Kew City has watched the development of the National Guide Dog and Mobility Centre since it moved to the area in the early sixties.

Now recognized throughout the world as leaders in the field of mobility training for the visually impaired, the Association is still expanding its services.

Today many people who are not recognized as "blind" receive help for their failing or impaired vision. Sight can be affected for various reasons, causing different problems in each case. A stroke, accident or simply old age can leave a person with only partial vision. With proper training on how to use their remaining vision an individual can obtain a high standard of mobility and confidence.

All services provided by the Guide Dog Association are completely free of any cost. If you would like any further information on the subject please contact the Centre on 860 4444.

The most recognized area of assistance to visually impaired people is, naturally, the Guide Dog. People in the Kew area are perhaps more

aware than most, for each day an Instructor can be seen training the dogs in the quiet residential streets, shopping centres, such as Kew Junction and Glenferrie Road and working the Public Transport system.

One of the most unusual dogs walking the streets at the moment is Leonardo. A standard poodle, Leonardo has been in training for the past four (4) months and has almost completed his course. He will be the first poodle to work as a Guide Dog in Australia and he is certainly taking to his training. His Trainer, Kelsey Conyers, informs us that he is intelligent and a quick learner with a good sense of humour.

Leonardo was donated to the Centre through the Poodle Club of Victoria, and will be going to live in Canberra once he has graduated as a Guide Dog. Leonardo was chosen to fill a special request from a visually impaired lady whose young daughter is allergic to dog fur — poodles do not have fur, they have a coat of wool.

## NEW WELFARE OFFICER

The new Welfare Officer for the Aged at Kew Council, is JENNENE ARNEL and she has been in the position since the beginning of September. Previously Jennene was Welfare Officer with the Anglican Homes for Elderly People.

The responsibilities of the Welfare Officer for the Aged include co-ordinator of Kew Council Domiciliary Services, assessment of applicants for Hamer Court and assisting with general enquiries regarding accommodation, domiciliary and community services available for elderly people.

Jennene Arnel can be contacted at the Municipal Offices, Monday to Friday, 9 am to 5 pm, or by phoning 862 2466.

## Uniting Church, Normanby Road 'Play Group' Or Pre-Kinder Support Group

As advised in the September issue of Kewriosity, a 'pilot' group was to begin in the Kinder Hall at the Uniting Church, Normanby Road, (near High Street).

Sufficient interest has been shown to indicate that there is need for such a group and it is planned to open each Wednesday from 10.00 am to 12.30 pm during the school terms in 1984.

If you wish to enrol or are seeking further information please contact Alan Duncan (859 5477) or (859 1206), or Jenny Renton (859 4958).

If the need exists, it is also planned to be open during the last two weeks of the December/January school holiday period. The objective of this is to assist parents with older children, by caring for their pre-schoolers, while they 'do things' with the older children. If interested in this aspect, contact Jenny Renton (859 4958) as early as possible.



# THE ROTARY CLUB OF KEW

Rotary is a world-wide organisation of business and professional men who aim to provide humanitarian service, to encourage high ethical standards and to help build goodwill and understanding throughout the world.

The Rotary Club of Kew has a membership of about 60 men from a wide cross-section of the Kew community endeavouring to put those ideals into practice.

It does this in many ways:—

- By contributing to the Rotary International Foundation and other international programmes which will, in the period 1981-1986 outlay more than \$100 million in education, health and practical assistance programmes throughout the world.

- By promoting and assisting programmes for young people. This year Kew Rotary will be:

— further supporting Kew ROTARACT CLUB — a social service club for young people aged 18-28.

— sending a local student to Japan for twelve months and hosting a student in exchange; and

— sponsoring two local youth leaders to a week-long seminar to develop leadership qualities.

- By assisting local organisations and groups in financial and practical ways. In the last few years Kew Rotary has:—

— supplied furnishings and fittings for Hamer Court Hostel;

— purchased a community bus for Kew Council;

— financially assisted Willsmere Hospital, Glendonald School for the Deaf, St. Paul's School for the Blind, the Guide Dog Centre, John Newman Morris Hostel for Paraplegics, H.K.C. Activities Centre, and many other local organisations, to purchase needed equipment and fund important programmes.

Club members are justifiably proud of these efforts.

The Club looks forward to continued community support — especially for its popular Art Show (the Club's major annual fund raising project) to be held in June 1984.



*President Harry Higgins (left) with past president Peter Hoban at the change over night in July.*

## PROBUS CLUB

The Probus Club of Kew was formed in May of this year under the sponsorship of the Rotary Club of Kew. With a membership of 58 the Club has already developed its own style, and identity whilst maintaining the stated aims and objectives of Probus Clubs. Briefly, the aims and objectives are to provide regular gatherings of men who, in retirement, appreciate and value opportunities to meet others in similar circumstances, and who hold similar levels of interests.

Office bearers of the Probus Club of Kew are:

President: Mr. Marshall Slattery

Secretary: Mr. Lyle Ford

Treasurer: Mr. Jack Cummins

Messrs. Don McKendry, Bert Osmond, and Keith Dixon are additional members of the Management Committee.

Meetings are held on the fourth Thursday of each month at the Kew R.S.L. rooms, Cotham Road, commencing at 10.00 am and concluding at noon. There will not be a December meeting due to the Christmas recess. Normal monthly meetings will resume on January 26th.

Guest Speakers who have already entertained members at past meetings have included Allen Martin, Executive Director, Asthma Founda-

tion, Keith Holdsworth, Executive Director, National Guide Dog and Mobility Training Centre, the Club's President, Marshall Slattery who is well known for his involvement in community affairs in Kew, and club member Ivan Baldwin who gave a most interesting address on farming in the Big Desert.

Visits to places of historical or current interest are also arranged for Club members. A tour of the "Age" operations ably arranged and conducted by committee member Keith Dixon was a great success, as was a tour of the Boroondara Cemetery hosted by the Probus Club of Kew for Hawthorn Probus Club members.

More recently, our President conducted a tour of historical buildings and sites in the Eastern Hill area of the City of Melbourne for members of the Early Retirement Group of Kew and our own members.

Members can look forward to a continuation of similar activities in the future including a continuous review of the format on monthly gatherings. The November meeting will be held on Thursday 24th. Guest speaker will be Keith Dixon, subject: 'Symes and the Age'.

Further details of the Club can be obtained by phoning the Honorary Secretary on 859 1565.



# HOLIDAY PROGRAMME ACTIVITIES

An interesting and varied range of programmes has been planned for the coming school holiday break. These programmes are outlined below, however should further information be required please contact Peter Butler, Municipal Officer, phone 862 2466.

**Play Centre** — 9th to 27th January, 1984.

One play centre has been organised for the holiday period, to run at the St. Paul's School for the Blind from 8.30 am to 5.30 pm Monday to Friday. The play centre will provide an activity programme from 10 am to 4 pm, with a care component from 8.30 am to 10 am, and 4 pm to 5.30 pm. The programme at the play centre will include a variety of arts and crafts, New Games activities, sport, drama, music, swimming etc.

The fee structure for the programme is:

- \$2.00 activity programme;
- \$4.00 full day;
- \$6.00 maximum charge per family per day.

## Kew Traffic School

The Traffic School will be open for a three week period from 9th to 27th January, from 12 noon to 4 pm. The Traffic School will operate purely as an informal activity, and will not provide a care component. Therefore, children using the school will be allowed to come and go as they please. Children will be encouraged to bring their own bikes, but bikes will be available for those who require them.

## Mobile New Games Trailer

The New Games Trailer, including art and craft, will operate throughout the Christmas Holidays in local neighbourhood areas during the last three weeks of January. A list of locations and times is available from the Municipal Offices.

## Toddlers' Playgroup

A toddlers' playgroup has been organised with the Kew Uniting Church Playgroup, to run the following sessions during January:

Monday 9th, 16th and 23rd  
Wednesday 11th, 18th and 25th  
Friday 13th, 20th and 27th

These sessions will run from 10 am to 2 pm.

## Teenage Holiday Programme

A Teenage Holiday Programme will commence on Monday, December 12th, 1983 and conclude Friday, January 27th, 1984 (centre will be closed from December 23rd to January 9th).

The centre will be open from 1 pm to 10.30 pm with an entrance fee of \$1.00. At this stage a venue has not been finalized, however the pro-

gramme will most likely operate from the Old Timber Pavilion at Victoria Park.

The centre will have table tennis and billiard tables, art/craft, music, table games, etc.

Full details will be available from the Municipal Recreation Officer, Peter Butler early in December, 1983, phone: 862 2466.

## WHERE AND WHAT IS "BODALLA"?

Well, it could be the small town on the South Coast of New South Wales, but the one we're interested in is the Uniting Church Nursing Home at 32 Walpole Street. "Bodalla" is an Aboriginal word meaning "a haven" and that's what the nursing home aims to be for its residents.

"Bodalla" is not intended to be a place where frail older people are tucked away to be left out of sight of the world. Residents are encouraged to be as active physically, mentally and spiritually as they can possibly be.

It's an interesting fact that music is the strongest factor in stimulating memory. At "Bodalla" a trained music therapist, Mrs. Mary Ward, has recently been engaged to help patients who are dementing. In a little over two months she has achieved some remarkable results. Patients who have been incoherent for months have been stimulated through music to make simple conversation.

Art teaching is provided for a small group who are interested and are able to take part. Art teacher, Mrs. Jane Swan, takes an instruction session each Wednesday. Those who have taken part have responded well to this form of mental stimulation.

Both these activities have been funded by donations from the "Friends of Bodalla Auxiliary" and from relatives. It is only by donations above and beyond the actual cost of providing full-time nursing care that such extra activities can be provided.

For some four years Mr. William Martin of 58 Park Hill Road has come to "Bodalla" each Thursday morning for two hours. He conducts



a program which consists basically of a current news session, a recorded interview with a prominent personality and a quiz session suitable for people in the 60 to 100 year age group.

His endeavour is to bring the outside world to people who will never return to it and at the same time he tries to stimulate their minds by referring to their experiences in the past.

He aims to get his audience responding and they do. His programs are by far the most popular of all the activities provided for "Bodalla's" people.

Mr. Martin conducts similar sessions at Carnsworth Garoopna and Overton Nursing Homes, at Willsmere Day Care Centre, at the Eva Tilley Homes and at other places. His is a splendid example of what a retired businessman can do in the field of helping others less fortunate. This work has been done on a voluntary basis without financial support but increasing costs are forcing him to curtail his activities. Perhaps his is a case for a service club or similar activity to hop in and help.



# LISA'S SCHOOL DAY

Glendonald at 25 Marshall Avenue, Kew, is a school for hearing-impaired students. This school, opened in 1951, is an Education Department school which uses an oral/aural (speaking/listening) method of communication. Oral/aural education aims to maximise each student's use of residual hearing and to develop his or her spoken language.

Lisa is an eleven year-old who attends Glendonald School for Deaf Children. Her school days are a mixture of things that are similar to those of other eleven year-olds in the community, and things that are quite different.

Early on Monday mornings, Lisa

catches a bus, by herself, from her home in Inverloch, and travels to Dandenong to meet a taxi to travel to Kew. From Monday to Friday, Lisa lives at John Cannon House, at 32 Belmont Avenue, Kew, the hostel attached to Glendonald.

At the hostel, Lisa lives with 21 other hearing-impaired children, many of whom also travel long distances, arriving each Monday by aeroplane, bus or train from country areas, and returning home each Friday after school.

Students from the metropolitan area are transported daily by Education Department transport with arrangements co-ordinated at the school. Transport is also provided for the country students to travel home each weekend.

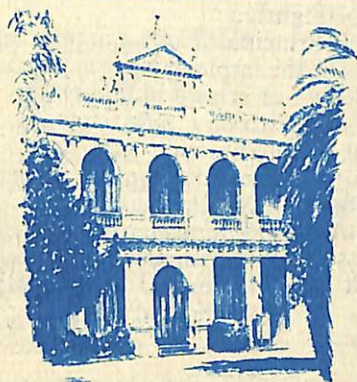
teachers when batteries need to be replaced, or when her hearing aids need repair and adjustment.

As Glendonald students become older, they are incorporated into programs and activities that are designed to cater for secondary aged students. However, Glendonald is too small to be able to provide a full range of subjects at the secondary level. Therefore, we use local High and Technical Schools for specific subject teaching. Our students travel by bus and taxi to Kew High School, Swinburne Technical School, Richmond Technical School, Collingwood Technical School and Holmesglen T.A.F.E. for typing, woodwork, sheetmetal, metalwork, and other subjects but return to Glendonald for mathematics, language and the other special subjects required to lessen the effects of hearing impairment.

Some students spend some time in their own local schools, as a trial to ascertain whether they can be taught without the special teaching methods used in a school for deaf children. Many children move from Glendonald into these schools full time, with support from the Visiting Teacher Services for Hearing Impaired Students.

The placement of all 137 (current enrolment) students at Glendonald is reviewed regularly and the parents of each student are involved in the review process. It is not possible to predict whether Lisa will always be a student at Glendonald — that is a decision her parents will make after consultations with school staff and with members of the Student Services Division of the Education Department.

At this stage, Lisa is enjoying her life at Glendonald, and with the special assistance given by her teachers, is making good progress.



## GIVE A PIECE OF OUR PAST THIS CHRISTMAS

Why not give a slice of Kew's history as a Christmas present, this year? A packet of notepaper and envelopes, depicting the historic buildings of Kew, has been released by the Kew Historical Society.

Pencil sketches of Black Hall, D'Estarille, Kew Court, Ivy Grange and the Post Office are featured — and each of the five sketches has a potted history of its building.

The stationery is offered in an attractive beige colour. And the set of five notepaper and envelopes is available from your Historical Society for only \$2.50.

The collection is a limited series, and stocks may not last! To obtain your set, ring **Philip Barnes of the Kew Historical Society on 819 3118.**



*Children at John Cannon House.*

Glendonald caters for children from six to 17 years of age, but Lisa is a student in our Junior School, where 50 children aged six to 11 pursue their studies. Her class of seven students are involved in subjects that most primary aged students work at (Mathematics, Spelling/Word Study, Language, Social Studies, etc.), but special work in Speech, Use of Audition, and Specific Language Teaching to overcome the effects of her hearing loss are added to the school curriculum.

Lisa has a moderate hearing impairment, and since very early childhood, has been wearing two hearing aids. With her aids, she is able to hear most sounds contained in everyday speech. However, to make most use of her hearing aids, Lisa needs to work in a quiet environment, and if she is further than 10 to 12 feet from the person to whom she is talking, then the effectiveness of her aids is greatly reduced.

Lisa is very careful with her hearing aids, and has learned to tell her



*Children at Glendonald School.*



# KNOW YOUR LOCAL SCHOOL

Kew High School is the only state secondary school in the city of Kew, but there are seven major private secondary schools in its zone. There are therefore opportunities for admission to Kew High School at Years 11 and 12 in 1984 for pupils outside the State system and presently in Years 10 or 11.

## ACADEMIC ACTIVITIES

Academic Activities are traditional at all levels, with increasing component of community languages (Greek, Italian). Future plans include expansion of Music, and wider selection of courses at Years 11 and 12 in collaboration with Swinburne T.A.F.E. and neighbouring schools. Electives begin at Year 9: practical, commercial and increased language component.

Kew High School aims to provide a broad general education for all its students. It is hoped that all students will be able to develop to their full potential and will leave the school well equipped to pursue their lives. The opportunity to explore and expand interests, and to specialize for tertiary studies becomes available as students move up the school. It is hoped that as many students as possible will remain at school and find the education offered here rewarding and useful.

Students are encouraged to take their learning seriously and both students and parents should feel free to approach Year Level Co-ordinators or staff if there are concerns. By way of interim reports, mid-year and end of year reports, the school aims to keep the parent body as informed as possible about each student's progress.

As the school is a social environment as well as a learning one, we aim to maximize co-operation between all members of the school community and ask for courteous and considerate behaviour. We hope students will leave the school with social skills and self-confidence well-developed. We ask for your co-operation in helping us maintain the high level of coherence and integration apparent in the school.

## SPECIAL PROGRAMMES

- Integration of handicapped pupils from Glendonald School for the Deaf and St. Paul's School for the Visually Handicapped.

- Evening classes for Years 11 and 12 run by Swinburne College of T.A.F.E. Monday to Thursday.

- Holiday programmes run by the Community Education Officer.

- Use of the school is also made by leisure and interest groups such as Tae Kwon Do.

- The day-to-day programme includes Migrant English and Goodger Mathematics.

## SPORTING ACTIVITIES

Kew High School is a founding member of the Koonung Creek High Schools Sports Association, and takes part in interschool sport on Tuesdays for Years 7, 8, 9, and Thursdays for Years 10, 11, 12, last two periods of each day, 1.35-3.05 pm. In 1983 Kew won all divisions, and the aggregate, in the K.C.H.S.S.A. Sports. All internal sport is conducted on a house system.

The range of sports varies slightly according to availability of facilities. The school has supported its pupil State and Australian representatives.

The school lacks a gymnasium and adequate sports grounds. This situation is unlikely to improve. Despite this, pupils achieve very well in sporting competition.

Bushwalking and skiing camps are run for senior forms.

## OTHER ACTIVITIES

The school mounts one major and several minor musical productions each year, and the Community Theatre is in constant demand by amateur groups in the community.

The Commonwealth Library serves day and evening school.

The Canteen is carpeted and heated, with seating for eighty. "Junk" food is not available.

## PARENTS' ACTIVITIES

The School Council meets once a month on the fourth Monday. Its elected core comprises five parents, three pupils, five teachers and two welfare club nominees. It is responsible for the financial administration of the school, and has the right of advice to the Principal on educational matters.

The Ladies' Auxiliary meets once a month on the third Wednesday of each month at 1.30 pm in the Theatre, and is the major support for the Canteen and fund raising.

The Greek Parent's Association Committee meets once a month on the first Thursday evening, conducts major social activities, and relays information between the school and the Greek Community. It is also successful at fund raising.

## GOVERNMENT

Financial administration is vested in the School Council.

Educational policy is decided by a consensus between:

- the Staff Meeting which meets each week;
- the School Council which meets monthly;
- the Students' Representative Council which meets fortnightly;
- and the Principal.
- A Curriculum Committee meets fortnightly.

The Principal is ultimately responsible for the implementation and consequences of school policies.

The day-to-day administration is carried out by the Principal, the Deputy Principal, Senior Teachers and Special Duties Assistants.

Parents and pupils have the right of access to the Principal on all matters.

All School Council meetings are open to parents and visitors, on request.

## TONE

Kew High School endeavours to promote a sense of community among its constituents. Members are expected to be punctual, courteous, honest, and to give to the totality as well as take from it. They are expected to exercise common sense.

It is expected that each pupil of Kew High School understands that he/she benefits from the high reputation of past pupils, and intends to add to the school community's reputation.

## Ed White / ACTING PRINCIPAL

### THE CHAP TO WATCH

You watch the chap in the car ahead,  
You watch the chap behind.  
You look to the right,  
You look to the left,  
And drive with a calm clear mind.  
But the chap you really want to watch  
On the highway, you will find,  
Is the chap behind the chap ahead,  
And ahead of the chap behind!



# COMING EVENTS

## DAYTIME GARDEN CLUB

The final meeting for 1983 will be held on **Monday November 28th**, at Highbury Grove Uniting Church. Time 1 pm to 3 pm.

Guest Speaker — Mr Peter Davies (curator of Kew City Parks & Gardens). Subject — Landscape Gardens.

This topic should be of interest to everyone. Summer is almost upon us and we will need to learn about planting for conservation of water.

Our first year has been very successful and much has been learned from the topics covered by our monthly speakers who have so generously given their time and knowledge. We look forward to an increased membership in 1984.

Child minding facilities are available at meetings — cost \$1 per family. For further enquiries please contact Mrs. in Fearon, Tel. 859 2977.



## UNITING CHURCH EAST KEW 'CHRISTMAS SPECIAL'

Friday, December 2nd, 7.30 pm is that date and time for the Parish Council, through its Fellowship Committee, to present its Annual Evening of Fun and Fellowship for the whole Church Family.

It is at these Evenings we say farewell to some members and welcome newcomers to the Church Family. This year, as usual the program including musical items is being planned to suit all age groups.

More information from Phyllis Duncan 859 5477.



## HYDE PARK UNITING CHURCH SUNDAY SCHOOL ANNIVERSARY

The Sunday School Anniversary will take place on **Sunday December 4th** at 11 am in the Hyde Park Uniting Church Pakington Street, North Kew.

The scholars will celebrate this special day by presenting a small play. The guest preacher will be Mr. K. Harris of 'Campaigners for Christ'. A very warm welcome will be given to all who care to join us on this day.

School classes start at 10 am each Sunday. More children welcome.

Our three devoted teachers are Mrs Susan Latu, Miss Bell and Miss Jan Kleeman. The last Sunday School class for this year will be held on December 18th. Sunday School will re-commence on the first Sunday after school begins next year.



## BAND CONCERT

The Kew Citizens' Band will present their 'end of year' Concert on Tues-

day, December 6th in the New Melbourne Concert Hall at 8 pm.

Guest artists will be Brian May of ABC Showband fame, Dennis Walter popular TV and recording star, Ruth Gurner Mezzo Soprano, Ann Cecil Flautist, Glendell Marching Girls and with compere John Stubbings. This will be an excellent night of entertainment with music to cater for all tastes.

The Band recently won the 1983 FEIP award for Entertainment excellence and gained the highest aggregate points in 'A' Grade of the 1983 Victorian Championships.

Tickets are priced at 'A' Reserve Adults \$8.50 Pensions and Students \$6.50. Children \$4.00 and 'B' Reserve at \$7.50, \$5.50 and \$3.00.

Concert tickets are available from Ian Mathers 878 3132 (Home) 354 7821 (Bus.) or from any Bass Box Office.



## CHRISTMAS CAROLS

Kew Baptist Church will present a Christmas Carol Sing-a-long with guest artists, Rosemary McKelvie, Brian Garth.

Senior citizens and friends from Kew, Hawthorn and Camberwell invited to an afternoon of community carol singing on Sunday, **December 4th** at 2.30 pm with afternoon tea at Kew Baptist Church Hall, Highbury Grove, Kew.



## FOR DECEMBER KEWRIOSITY PAPER

ASIAN EVANGELICAL FELLOWSHIP invites you to the special Christmas programme (tea and service) to be held on **Sunday December 11th** at 6.30 pm at the East Kew Baptist Church, Woodlands Avenue, East Kew. Music:— The Messengers, Duet on Flute; The Lazaro Family.

Message:— Audio Visual presented by Ron Tibby of European Christian Mission. Welcome to all. Enquiries Mr Con Halyburton 890 7352.



## HYDE PARK FELLOWSHIP

The A.G.M. of the Hyde Park Uniting Church Fellowship will be held on **Wednesday, December 14th** at 2 pm in the Hyde Park Church, Pakington Street, North Kew.

This year we were privileged to hear many wonderful speakers from various Church organisations. We heard and saw a short film of the work of 'Underground Evangelism' and we gave thanks that we have Religious freedom in this country.

Brigadier Briggs of the Salvation Army spent an afternoon with us. He is such a fine speaker that we are hoping that he will come along to one of our meetings in 1984. On the lighter side Mrs. Bysouth shared her hobbies of Hobbytext and Tapestry with us.

As usual we collected goods for the

Orana Fair, also goods which were sent off to our friends in Tonga (in time for Christmas) and we spent an afternoon ripping up old linen and rolling them into bandages for the Leprosy Mission. At our April meeting we farewelled the Rev. G. H. Harris and his wife. The Rev. Harris had been our minister for seven years and was an inspiration to all.

From May until the end of this year Rev. Ron Woodgate has ministered to us and his devotions at our Fellowship have been most inspiring.

Our average attendance has been 22 and we would like to see this increased, so why not join us, all are assured of a very warm welcome.

We wish everyone a safe and happy holiday. 'May the joy and peace of Christmas be with you throughout the coming year'.



## THE BILLABONG CLUB

### A CHILDREN'S SUMMER HOLIDAY CLUB

These coming School Holidays will again feature the wonderful **WILMA WOMBAT** and her **BILLABONG CLUB**. The Club will operate the week before Christmas — from Monday December 19th to Friday December 23rd from 9.30 am to 12 noon. On the evening of Wednesday December 21st, there will be a **Christmas Party** featuring the film **The Lion, The Witch and the Wardrobe**, starting at 7.00 pm. The Club will also be held during the last week of January — from Monday January 23rd to Friday January 27th from 9.30 am to 12 noon.

Experienced leaders ensure that the children will have a most enjoyable time. Activities include: games, stories, skits, songs, puppets, craft activities. Morning tea is included. There is no charge for the Billabong Club. (We can pick children up and drop them home in our mini-bus if need be).

The Billabong Club is held in Newnham Hall, Highbury Grove, Kew, and is an activity of the Kew Baptist Church.

Please ring Laurie Barton (861 5316) or Elaine Paxton (861 9806) for details.



## KEWRIOSITY AND THE FUTURE

Interested community-minded people, including those who would like to promote their own organisations, are asked to register their names with Thea Sartori, 80 3657, or George Grant 859 1206.

It is expected that a public meeting will be held late in March 1984 to consider the ways in which Kewriosity can best serve the needs of the Council and the Citizens of Kew.

## CHRISTMAS SERVICES

### ANGLICAN

Kew: Holy Trinity, High Street, 24th Dec. — 11 pm; 25th Dec. — 8 am, 10 am. St. Hilary's, John Street, 24th Dec — 12 midnight; 25th Dec — 8.00 am, 9.45 am. East Kew: St. Paul's, Windella Avenue; 24th Dec — 11.30 pm; 25th Dec — 8 am, 10 am.

### BAPTIST

Kew: Highbury Grove; 25th Dec — 9.30 am; (Combined with the Uniting Church Kew, in the Uniting Church.) East Kew: Woodlands Avenue; 25th Dec — 9.30 am.

### CATHOLIC

Kew: Sacred Heart, Cotham Road; 24th Dec — 7.30 pm; 10 pm Mass in Dutch; 25th Dec — 8 am, 9.30 am, 11.00 am. East Kew: St. Anne's Beresford Street; 24th Dec — 7.30 pm — Young Families; 25th Dec — 8 am, 10.30 am. North Kew: St. Joachim's Church, Barnard Grove; 25th Dec — 9 am.

## CHURCH OF CHRIST

Valerie Street, East Kew; 25th Dec — 9.30 am.

## UNITING CHURCH

Kew: Highbury Grove; 25th Dec — 9.30 am (Combined with Kew Baptist, in the Uniting Church) East Kew: Normanby Road, 24th Dec — 11.30 pm; 25th Dec — 9 am.

Hyde Park: Pakington St., (near Earl St.) 25th Dec — 9.30 am.

## NEXT ISSUE

The deadline for copy (typed please) for the next issue is **February 10th**. This issue will be delivered to every residence in Kew by the end of February, and will contain information about what is happening in Kew during the month of March, with special emphasis on the Kew Community Festival (March 16th-25th 1984)



THE KEW INTER-CHURCH COUNCILS  
INVITE YOU TO



**CIVIC CENTRE  
GARDENS**

Cnr. COTHAM RD., and  
CHARLES ST., KEW.

★ *Featuring* The KEW CITIZENS BAND  
(VIC. A'Gr. CHAMP)  
VOCAL ARTISTS + CHOIRS.

★ Bring rugs or ground sheets.  
Some chairs available.

Candles will be on sale

★ In the event of inclement weather this function will be held in the Civic Hall.