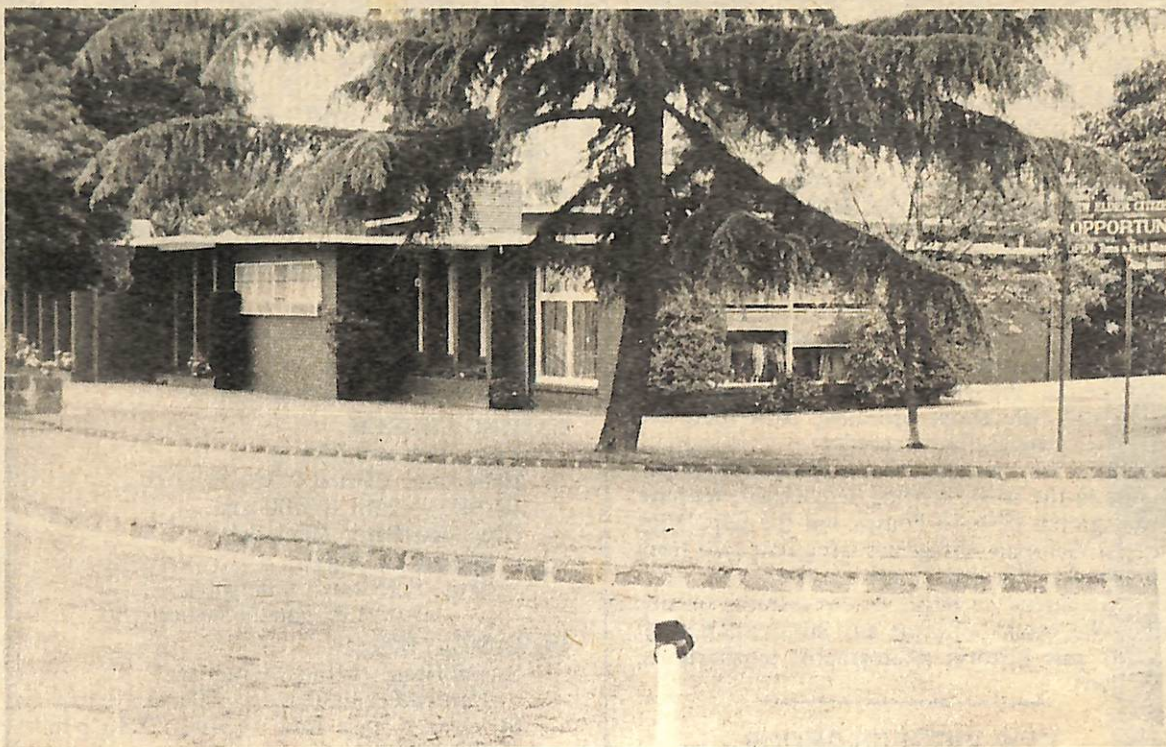


## What's doing in Kew for DECEMBER

- Sat. 1 Rotaract weekend away at Lorne - contact L. Armstrong on 80 5730, Jodi O'Connor or Margaret Brown - 813 1097. Coffee House, Folk Music, Drop-in Centre - St. Hilary's Church of England - 8 p.m.  
 Aust. Kite Assoc. Display, 10 Elm Gr., East Kew - 859 1673. Crusader Lodge Concert, 7 p.m., Civic Centre - Mr. C. Clarke, 836 1136.
- 2 "Open Mayor's Room" - 10:30 a.m. - 12:30 p.m.  
 \* \* \* \* \*
- Mon. 3 Rotaract Meeting - Auxil. Room, Kew Town Hall, 7:45 p.m. Kew Recreation Council, Birdwatching Group - Meeting at Churchill National Park, 10:15 a.m. Carpark. Melway Map No. 82 A9, further details - 861 9926 or 819 3967.  
 Nth. Kew Branch of A.L.P. - Meeting 8 p.m., East Kew Uniting Church, Normanby Road, East Kew.  
 Burke Hall Speech Night - 6:30 p.m., Civic Centre - Mrs. Earley, 859 3149.
- 4 Bingo - Civic Centre, Kew - 7:45 p.m.  
 Kew Citizen's Band Christmas Concert - 8 p.m. - Camberwell Civic Centre, Guest Artist - David Ashton-Smith. Tickets available from Geoff Code, 857 8964 or Ian Mathers, 221 6926.
- 5 Trinity Grammar Speech Night - Civic Centre - Mr. I. Monro, 861 6204.
- 7 Youth Camp for 14-20's - Wilsons Prom. - Nick 80 2036
- 9 Uniting Church, Normanby Road, East Kew Choir Christmas Music Service - 10 a.m.  
 Rotaract - Casual Tennis Day, Leeson St., Kew East.  
 \* \* \* \* \*
- Mon. 10 Mayor's Coffee House for H.S.C. Students & Friends - Civic Centre - 8 p.m.
- 11 Bingo - Kew Civic Centre - 7:45 p.m.  
 East Kew Inter-Church Council Advent Service at St. Pauls, Windella Ave. East Kew - 7:45 p.m.  
 Birrale Club Christmas Party, Nicholas Hall, 148 Lonsdale St., Melbourne
- 12 Bialik College Speech Night - 7:30 p.m. - Civic Centre - Mrs. Wyley - 22 4745.
- 14 Pool Party for 14-20's - St. Hilary's C. of England - Nick 80 2036.
- 15 Street Block Party - John St., Kew. Games, Folk Dancing in street, B.Y.O. Dinner, grounds of St. Hilary's opp. St. Georges.
- 16 Uniting Church, Normanby Road, Family Service theme "The Wasteful Son" - 10 a.m.  
 Rotaract Sailing Day on Corio Bay and B.B.Q.  
 Dingo Foundation Field Day, Willsmere Park - 12 noon onwards.  
 Willsmere Christmas Party afternoon.  
 \* \* \* \* \*
- Mon. 17 Rotaract Meeting - 7:45 p.m. Auxil. Room, Kew Town Hall. A.R.A.F.E.M.E. Meeting, Newnham Hall, Highbury Grove, Kew - 7:45 p.m.
- 18 Bingo - Kew Civic Centre - 7:45 p.m.
- 21 Mobile Carol singing, travelling in trucks to the Elderly and Shut-Ins of Kew - Nick, 80 2034.
- 23 Rotaract Tennis at Leeson Street, Kew East.  
 \* \* \* \* \*
- 25 MERRY CHRISTMAS TO ALL.
- 26 Bingo - Kew Civic Centre - 7:45 p.m.
- 27 "World Safari Promotions" - Documentary Film 12:30 p.m. and 10:30 a.m. Commences at the Civic Centre and continues until 9/1/1980.
- 31 Hungarian Catholic Assoc. - 8 p.m., Civic Centre - Mr. A. Renyes, 509 0062.

## KEW ELDER CITIZENS



### KEW ELDER CITIZENS

by Gwlad Wade

It is amazing the number of women who say they must go to work or else they would be bored to tears at home all the time. There is plenty to do in our community on a voluntary basis, if you do not have to work for the financial side of things. I think your reward would come to you by offering your services to assist with folk like we have at the Elder Citizens.

#### MEMBERS

Take note we are the Elder Citizens of Kew, not the Elderly. Why is it when one mentions "Elder Citizens" people conjure up in their minds "Little old Ladies" with bonnets who have had it? This is frustrating and most annoying because our folk are nothing like that. Don't forget we have male members too!!

The Club is referred to as "The Club" by our members, just the same way as business folk have their clubs.

#### THE BUILDING

We are grateful to our Council for the very nice, well set out building we have. Club Rooms built at the expense of a Council are few and far between. We have Cr. Ivan Wade to thank that the Club Rooms eventuated in January, 1970, it was he, who did all the "spade" work in getting the place built.

Our committee provided furniture, drapes, etc. to give the rooms the comfortable, pleasant atmosphere they have today, we are very proud of the whole set up.

Local businesses and service clubs donated equipment for our tremendous kitchen where something like 200 + meals are cooked daily. Voluntary drivers deliver meals to homes, some drivers having given this service up to 20 years - a lot of petrol to donate for a wonderful service. Lunch is available at the Club for members only.

#### ACTIVITIES

At the Club there are many and varied activities. Craft of different types is indulged in, exercise classes are fun sessions, a discussion group meets alternate Wednesdays, cards are played Tuesdays and Thursdays, with about 60 members being partakers in our Indoor Bowls group. Our special Club Day is Tuesday, when entertainment is organised and afternoon tea is served by voluntary people.

#### THE CHOIR

Which is trained by Mrs. Lorna Moran, accompanied on the piano by Mrs. Mollie Mithen, is an active group of members.

The Kew "Kuties" (our male folk) are a section who, trained arduously by Mrs. Westcott, contribute to our Club too.

#### OVER 80's

We give a party for our members who are 80 and over - this year we entertained 49 over 80's. Very generous local talent give their time to entertain on this day. It is wonderful to have generous people in our community. How about you?

### OPPORTUNITY SHOP

Incorporated in our building, we have our Opportunity Shop, jointly run with the Kew Lions Club. It was a thoughtful inclusion in our complex. We have a paid supervisor who is assisted by our own members on Tuesdays and Thursdays, Friday women from the Lions Club roster to help, Saturday our members do the good work. A worthwhile project. Goods for sale can be left in the container outside our Club Rooms.

### OUTINGS

The President, Mrs. Alma Westcott is the one behind organising wonderful holidays for members who attend the Club - there are always the ones who want to be on the receiving end, but do not want to give of course, which is a pity. There are outings organised during the year which are very popular - especially when we go to a restaurant.

### SUPERVISOR

Mrs. Grydzyn, our Supervisor, would welcome anyone to see through our Club Rooms - hours open 10:00 a.m. - 4 p.m. - How about it? Do not let it be said that you have not seen inside our Rooms.

### "FOR FRIENDS OF THE AGED"

*"Blessed are they who understand  
 My faltering step and palsied hand.  
 Blessed are they who know that my ears today  
 Must strain to catch the things they say.  
 Blessed are they who seem to know  
 That my eyes are dim and my wits are slow.  
 Blessed are they who looked away  
 When coffee spilled on the table today.  
 Blessed are they with a cheery smile  
 Who stop to chat for a little while.  
 Blessed are they who never say  
 'You've told that story twice today'.  
 Blessed are they who know the ways  
 To bring back memories of yesterdays.  
 Blessed are they who make it known  
 That I'm loved, respected and not alone.  
 Blessed are they who know I'm at a loss  
 To find the strength to carry the cross.  
 Blessed are those who ease the days  
 On my journey home in loving ways."*

Thank you to those who have taken time to read a little about our Club.



### YOUR NEWS IS GOOD NEWS

As you can see, the interests of Kew are wide and various. Keep telling us about them for the interest and information of other Kew Dwellers.

Drop your notice at the Copy Shop, 3 Walpole Street, or to the Municipal Offices, Charles Street, by the 10th of the preceding month.

### MUSICAL DOGS by Barbara Giles

You have a dog. And if you are in the fashion, a large dog. Not that large dogs are more vocal than small, merely the difference between tenor and bass. You walk your dog each night. You take it to obedience school. It is well fed. You go to work each day. The dog is bored, lonely. He may drowse away the time till you return. He may howl, yap, bark, for hours on end. You'll never hear him, unless a neighbour tape-records his noise.

That neighbour is feeling quite desperate by the time such a step is taken. Perhaps a student working in swat vac, someone whose professional work is done at home, who has a sick person, a baby whom the noise disturbs.

I don't know what the answer is, but beg dog owners to realise it is a continuing problem. The dog across the road has been crying all morning. A nice dog, who is never heard when the owners are at home. I shall go over again and talk to him, that will earn me a little peace.

## VILLAGE WITHOUT A NAME

by Barbara Giles, Kew Historical Society

When I came to live in Edgevale Road a friend who came to see me said, "Turning into this road is like visiting another country." I can see what she meant, looking at the largely Edwardian houses of some nearby streets, built on land subdivided very late.

Edgevale Road runs through land bought in 1851 by Captain Dumaresq, Dean McCartney and Peter Davis, its 368 acres bounded by the Main Gippsland Road, (Cotham) Burke, and Glenferrie Roads and Barker's Track.

The land was well grassed and watered, with springs on the slopes feeding a lagoon at the low point at the bottom of the road. There is mention of Edgevale in the seventies, but it ran only to Wellington, its "troublesome creek" can be traced by the lie of the land behind the houses on the east side.

When the land was subdivided finally in 1878, a number of small houses were built, some typical Victorian brick cottages, others of unusual appearance built in wood. Shops appeared, and in the first decade of this century there were about fifteen, and a bakery, everything could be bought in Edgevale Road.

The vacant blocks were built on in Edwardian style and the village without a name was shopping centre for the area, an eighty-year old Kew resident told us he remembers very well that his mother did all her shopping there.

Trams and the car proved too much for the little centre, though even fifteen years ago there were still eight shops operating. Now there are five, two general, three specialty.

This very morning what is perhaps the oldest house in the street is being demolished. We have three groups of town houses, but the popularity of the Victorian cottage has saved that type from the wrecker, the little houses survive.

We intend to begin serious research on this area. We would welcome any information at all on its past history, photographs, recollections, opinions.

## KEW JOGGERS GROUP

Do you find it hard to go jogging by yourself? Wouldn't you prefer to enjoy this outdoor interest with other people?

Why not join the **Kew Joggers Group**. We have been formed now for 20 months. Our current group started from scratch by jogging around the oval for a few weeks then gradually progressed to jogging for one mile, then two, then three, and now even more.

So, if you are a keen jogger in the Kew/Balwyn/Hawthorn area we would love to see you.

Our meeting place is the new clubrooms at **Stradbroke Park, cnr. Burke & Harp Rds., East Kew, on Tuesday and Thursday nights between 6 - 6:30 p.m. and Sunday mornings at 10:30 a.m.**

If you like to enquire more about the group, please contact **Debbie Classon on 859 6273.**

## DO IT YOURSELF DUPLICATING

The Copy Shop, 3 Walpole Street, has stencils, paper, duplicator, typewriter. It is open on Tuesday and Friday, 10 to 12 noon. A great help to busy secretaries of the many active groups in Kew.

## IDLE THOUGHTS

by Reg Hastings

*A room of voiceless men  
Tired, weary a vacant stare  
How do we handle it then  
of better things, a little care*

*To linger, mid life and death  
I am aware of what they need  
But alas, I am out of breath  
of good intent, I must then cede*

*They will respond to a lead  
I would like to lead the way  
My illness a curse does impede  
My impulses I must stay*

*I grieve for them all good men  
I await the turning of the tide  
the fox, lies warmly in his den  
My world lies open and so wide*

## ABOUT THE AUTHOR

by Ed.

Mr. Reg Hastings has lived in Kew for almost all of his seventy years. He did his schooling at Kew State School and found his first employment at Kew Cemetery. He served in the 46th Battalion in Communications at the Strategic Headquarters near Brisbane, and after the war spent a while in Tasmania. He then returned to Kew and has remained here since, living at present in Willesmere Hospital. He has concentrated on writing poetry since living in Willesmere but keeps his long-time interest in wood-turning and enjoys playing the harmonica when relaxing.

## KINDER CONTRIBUTES TO INTERNATIONAL YEAR OF THE CHILD

On the 21st November, children from the Davis Street Kindergarten entertained to morning tea, a group of visiting children and Occupational Therapists from the Kew Cottages.

The highlight of the morning tea was the presentation of educational toys and equipment for the Toy Lending Library at the Cottages. The sum of \$320 used to purchase the equipment was the proceeds of a fund raising Supper Dance held by the Committee and parents of the Kindergarten as part of their contribution to the International Year of the Child.

## CHRISTMAS CHURCH SERVICES

### BAPTIST CHURCH

Kew - 25th at 9:30 a.m., Uniting Church, Highbury Grove.  
East Kew - 25th at 9:30 a.m.

### CHURCH OF ENGLAND

St. Paul's - 24th at 11:30 p.m.  
25th at 8 a.m. and 10 a.m.  
St. Hilary's - 25th at 8 a.m. and 9:45 a.m.  
Holy Trinity - 24th at 11:30 p.m.  
25th at 8 a.m. and 10 a.m.

### GREEK ORTHODOX

24th - 7 a.m.-11 a.m. & 7 p.m. - 9:30 p.m.  
25th - 9 a.m. - 12:30 p.m.

### CHURCH OF CHRIST

East Kew - 25th at 9:30 a.m.

### UNITING CHURCH

Kew - 25th at 9:30 a.m.  
Hyde Park - 25th at 9:30 a.m.  
East Kew - 25th at 9:00 a.m.  
Deepdene (Paton Memorial) -  
24th at 11:30 p.m.  
25th - 8:15 a.m. Communion  
9:00 a.m. Family Service

### ROMAN CATHOLIC

Sacred Heart - 24th at 7:30 p.m.  
25th - 8:00, 9:30 and 11:00 a.m.  
St. Anne's East Kew - 24th - 7:30 p.m.  
25th - 10:30 a.m.  
St. Joachim - 25th - 9:00 a.m.

## AUSTRALIAN KITE ASSOCIATION

by Helen Bushell

This year's December Show will be accented towards "Do-it-yourself", for both children and craftspeople, although there will be some kites for sale.

Plastic kites originating under the Australia Council's "Artists in Schools" Programme may be made from \$2 and cotton kites may be made up from \$5. Individuals and school groups are welcome to look around free, but only 5 children can make kites in a 1 hour session unless a teacher is helping - when 10 children can be adequately taught.

We will have a display of new and conventional kites from December 1 to December 16 at 10 Elm Grove, East Kew - Phone 859 1673.

## A.R.A.F.E.M.I. - A NEW ASSOCIATION FOR VICTORIA

A.R.A.F.E.M.I. is the name by which an Association of Relatives and Friends of the Emotionally and Mentally Ill is to be known.

The main aim of A.R.A.F.E.M.I. is to foster mutual support among its members by strengthening their confidence and self-esteem, enabling them to regain and retain emotional, social and physical dignity. With the re-establishment of social contacts will come the development of ability and opportunity to enter into dialogue with professionals responsible for the treatment of the family members.

Through liaison and co-ordination, education will be promoted in the community leading to the establishment and maintenance of homes and services, better understanding, and changes in community attitudes to emotional and mental illness.

Plans are in hand for monthly evening meetings, middle of the month, daytime meetings and weekly advice and referral centres in as many local and country areas as necessary.

A.R.A.F.E.M.I. is planning its first meeting in Kew on Monday 17th December, 1979. Venue - Newnham Hall, Highbury Grove. The format will be informal and will commence with coffee at 7:45 p.m., to which you are all cordially invited. There will be opportunity for -

- Personal involvement in the Association.
- Caring and sharing of problems.
- Planning ahead for 1980.

## OTHER MEETINGS OF LOCAL INTEREST

- \* 2nd Wednesday of each month commencing 12th December, 1979 between 1-3 p.m. Camberwell Community Centre, 563 Riversdale Road, Camberwell.
- \* Monday 21st January, 1980 - 7:45 p.m. Newnham Hall - Highbury Grove, Kew.

# COUNCIL NEWS

## ROADWORKS FOR THE YEAR

Is your street in the following list? If it is then during the next nine months the Council will be carrying out the work indicated, as part of its annual programme to maintain and upgrade the road and footpath network in the City. There may be some inconvenience caused for a short time. The Council regrets this but will endeavour to give homeowners every consideration during the work.

If you want more detail on the exact extent of the work, please contact the Engineering Department at the Municipal Offices. Phone 861 6292, Ext. 26.

### New Footpath Works:

Burke Road (Dean St. to Mount St.)  
Grange Road (East side Traffic School to bend)  
Edward Street (East side full length)  
Eglinton Street (South side Pakington Street to Walpole Street)  
Parkhill Road (South side Normanby Road to Cecil Street)  
Willsmere Walkway - full length.

### Road Resurfacing:

Goldthorns Avenue  
Kyora Drive  
Lister Street  
Lofts Avenue  
Mackie Court  
Newbury Street  
Pakington Street (Eglinton Street to Willsmere Road)  
Park Crescent  
Perry Court  
Rimington Avenue  
Riverside Drive  
Sutherland Avenue  
Vista Avenue  
Wellington Street (Gellibrand Street to Charles Street)

### Channel & Road Reconstruction:

Alfred Street (John Street to Thomas Street)  
Belford Road (Kilby Road to Beresford Street)  
Fitzwilliam Street (Edgevale Road to Coleridge Street)  
Hartwood Street (Kilby Road to Cadow Street)  
Normany Road (Cotham Road to Downton Grove)  
Parkhill Road (Wimba Avenue to Marshall Avenue)  
Peel Street (Eglinton Street to Malmsbury Street)  
Stevenson Street (Hodgson Street to Carson Street)  
Studley Avenue (Holroyd Street to Molesworth Street)  
Tanner Avenue  
Woodford Avenue

In conjunction with the Country Road Board, and using funds from the Government to cover part of the cost, the Council will be continuing to improve Princess Street, Denmark Street, Barkers Road, Cotham Road, High Street and Stevenson Street.

## MUNICIPAL OFFICES - ACCESS FOR THE DISABLED

Plans are now being prepared for a ramp access to the first floor of the Municipal Offices. The physically disabled, elderly residents and mothers with prams and pushers will benefit from the improvement. It is timely work as 1981 has been declared as the International Year for the Disabled.

## PARKS AND RECREATION AREAS

Improvements will be undertaken this year in the following parks:

Stradbroke Park - Upgrade old pavilion and general improvements.  
Willsmere Park - Training lights.  
Victoria Park - Children's play area, training lights and general improvements.  
Alexandra Gardens - Renew public lighting.  
Hay's Paddock - Grading and grassing, bridge and access road, beautification.

## HUMAN SERVICES

Provision has been made for improvement of the sand pits at the Glass Street and Windella Avenue Kindergartens. This work will be done in co-operation with the Kindergarten Committees.

A freezer/chiller room is being installed at the Elder Citizens' Club in High Street to assist the Meals-on-Wheels service. It will allow the bulk purchase of perishable foods and help to contain the cost of the meals provided.

## CHRISTMAS HOLIDAY PROGRAMME

A variety of activities have again been planned for the Christmas Holidays, including:

**A Playcentre** - at the East Kew Primary School (Kitchener Street), from Monday 7th to Friday 25th January. The Playcentre will operate between 8:30 a.m. and 5 p.m.

**A Playgroup** - at the Kew Uniting Church, 23 Highbury Grove, on the following days in January:

Monday	7th	14th	21st	(from 10 a.m. to 2 p.m.)
Wednesday	9th	16th	23rd	bring own lunch)
Friday	11th	18th	25th	

**Kew Traffic School** - Grange Road, Kew, will be open from Monday 14th to Friday 25th January, between 12:30 p.m. and 4:30 p.m.

**Films** - the following films will be screened at the Kew High School Community Theatre (High St., East Kew), commencing at 1 p.m. and concluding at 3 p.m.:

Wednesday 16th January	"Mischief"
	"Hide and Seek"
Wednesday 23rd January	"Blind Man's Buff"
	"All at Sea"

For further information contact Peter Butler the Municipal Recreation Officer on 861 6292.

Don't forget to collect your Holiday Programme Brochure from the Municipal Offices or Library.

## KEW CROQUET CLUB

This Club is situated in Victoria Park, High Street, Kew. Tuition is available every Monday morning for beginners and players at 10:30 a.m. on the lawns. Enquiries - Contact either Mrs. G. Gee, 819 3967 or Mrs. V. Paterson, 861 7055.