

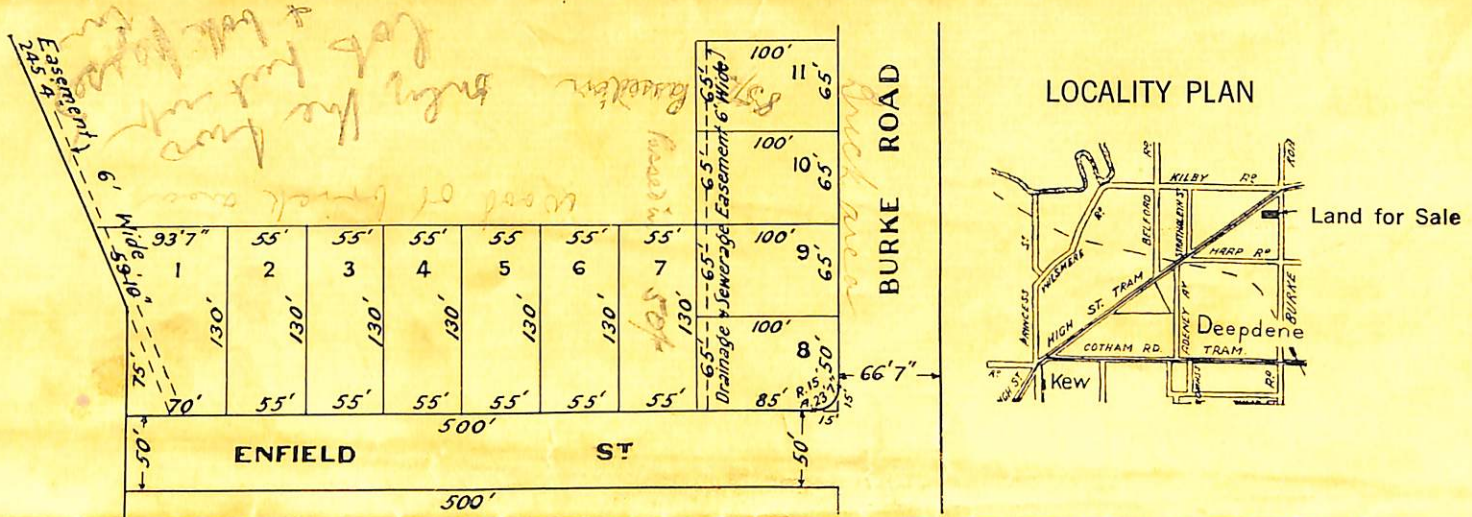
SATURDAY, 28th OCTOBER, 1939

On the Land, at THREE o'clock.

Under instructions from THE MELBOURNE & METROPOLITAN TRAMWAYS BOARD

SUBDIVISIONAL SALE OF 11 VILLA SITES

BURKE ROAD AND ENFIELD STREET EAST KEW



Note the Position.—Two Minutes High Street Electric Tram, direct to City. Travelling time, thirty minutes.

Remarkable building activity in this delightful district; value of buildings erected in past twelve months exceed previous year by over £100,000.

Modern and Attractive Brick Villas are in immediate vicinity.

Buy Now at Auction Prices. Values steadily increasing.

EASY TERMS: One-fifth Deposit. £10 per quarter for Burke Road lots, and £5 per quarter for Enfield Street lots. Interest 5 per cent.

TITLE, CERTIFICATE. Solicitor, F. P. DERHAM, 394 Collins Street, Melbourne.

J. G. MEMBREY & CO.

Auctioneer, 31 Queen Street, Melbourne. Tel. M 5170.