

THE BEAUTIFUL
WILLSMERE PARK

== **ESTATE** ==

K E W

40

Superb Villa Allotments

Great Subdivisional Auction

SATURDAY, 9th OCTOBER, 1926

In a Marquee on the Estate at 3 o'clock

EVERY LOT TO BE SOLD

Easy Terms **£10 DEPOSIT 20/- MONTHLY**

Balance 3 Years. Interest 6 per cent. Quarterly.

Special Discount of 2½ per cent. for Cash within 30 Days.

This beautiful Estate is right on the Yarra Heights, with glorious panoramic views. Within 5 miles of the G.P.O., 7 or 8 minutes from High St. Electric Trams, and between the Golf Links and the Public Park. Electric Light, Water, Gas, and Sewerage readily available.

FREDK. W. SYMONS

AUCTIONEER, National Mutual Buildings

395 Collins Street, cor. Queen Street, Melbourne. Tel. 7297, 7298, 7299

Willsmere Park

Saturday, 9th

Subdivisional
Auction

40
Superb
Villa Sites

Easy Terms

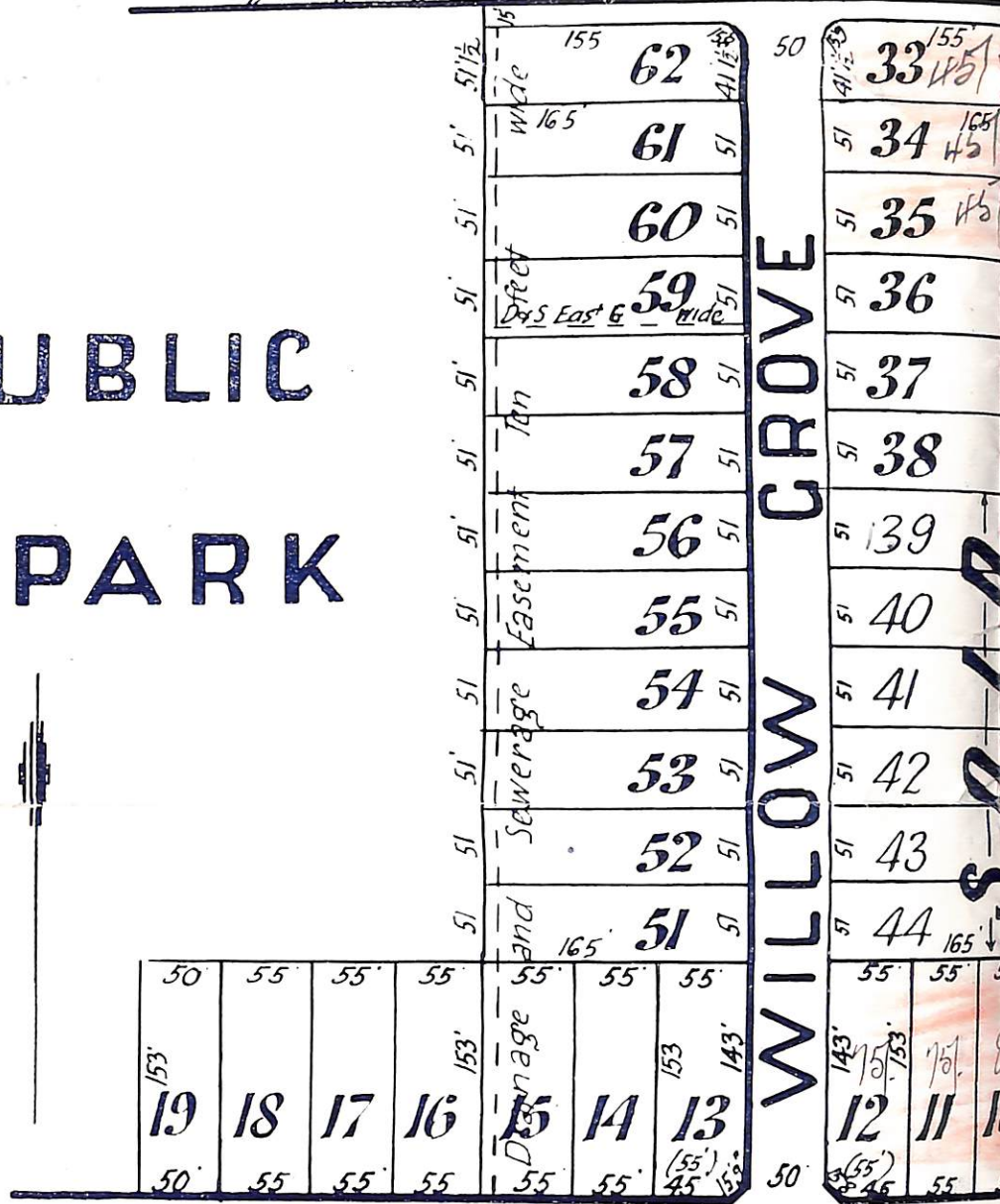
£10 BALANCE
DEPOSIT 20/-
MONTHLY

With Interest 6 per cent. payable
Quarterly. Any remaining balance
to be paid at the end of Three Years.

2½ per cent. discount for Cash in
30 days.

Such Easy
Terms have never
been excelled for
Land of this High
Class.

PUBLIC
PARK



KILBY

EVERY BLOCK AN IDEAL HOME SITE

Between the new Golf Links and the Public Park. Ad recent sale of which was so phenomenally

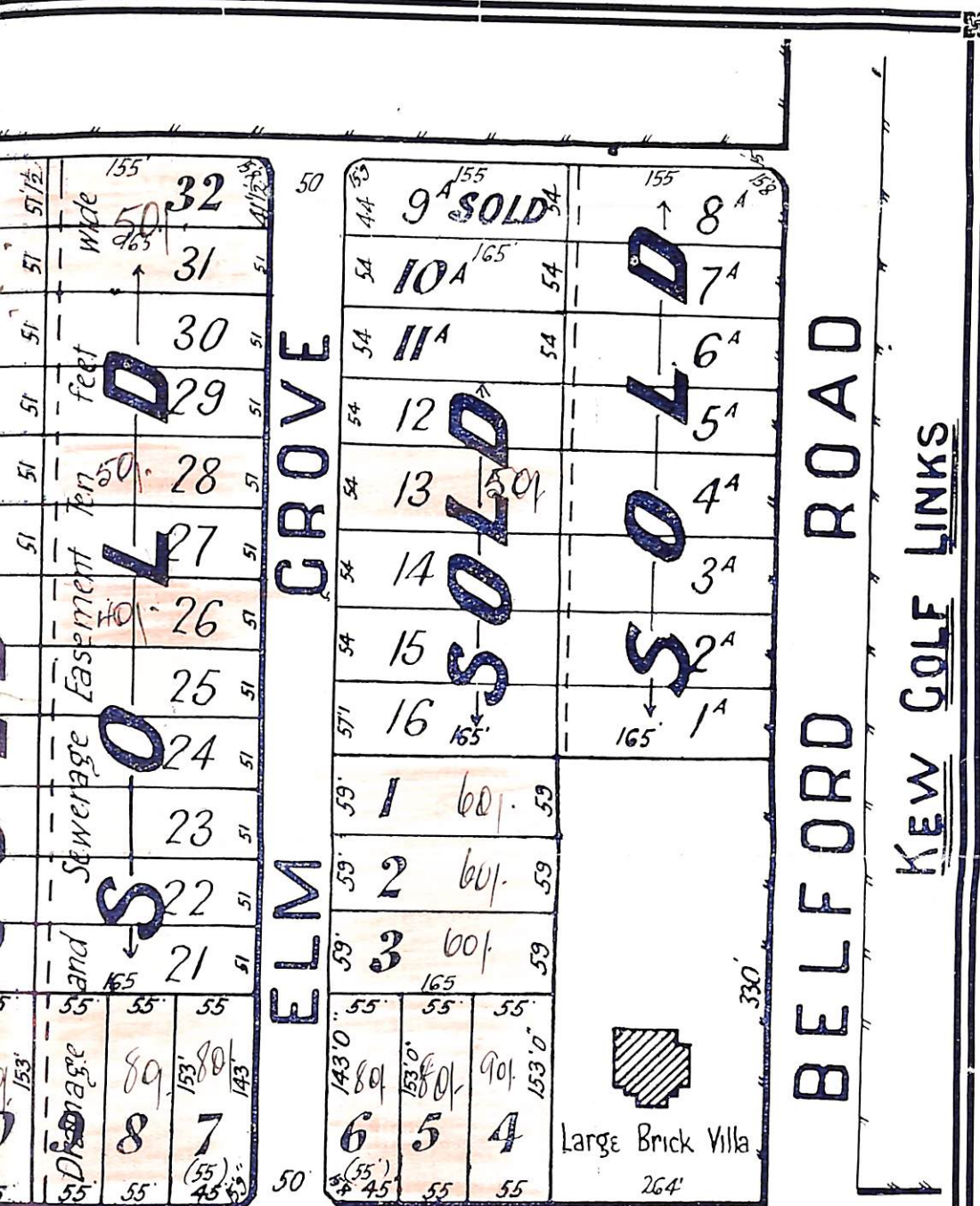
Every Lot for Positive Sale under the Hammer

FREDK. W
A U C T I O N

National Mutual Buildings, 395 Colindale Avenue, London N.W.9

Estate — KEW

th Oct., 1926



At 3 o'clock
on the Estate

40

Superb

Villa Sites

Easy Terms

£10
DEPOSIT

BALANCE
20/-
MONTHLY

With Interest 6 per cent. payable
Quarterly. Any remaining balance
to be paid at the end of Three Years.

2½ per cent. discount for Cash in
30 days.

Such Easy
Terms have never
been excelled for
Land of this High
Class.

ROAD

Geo. Parsons and Sons Ltd. Surv.

HIGH AND DRY

bins the well-known "Old Kew Golf Links Estate," the
successful and rushed by eager buyers.

Buyers may be sure of immediate and substantial profits.

SYMONS

NEER

ollins St. (cor. Queen St.)

TEL. 7297,
7298, 7299

