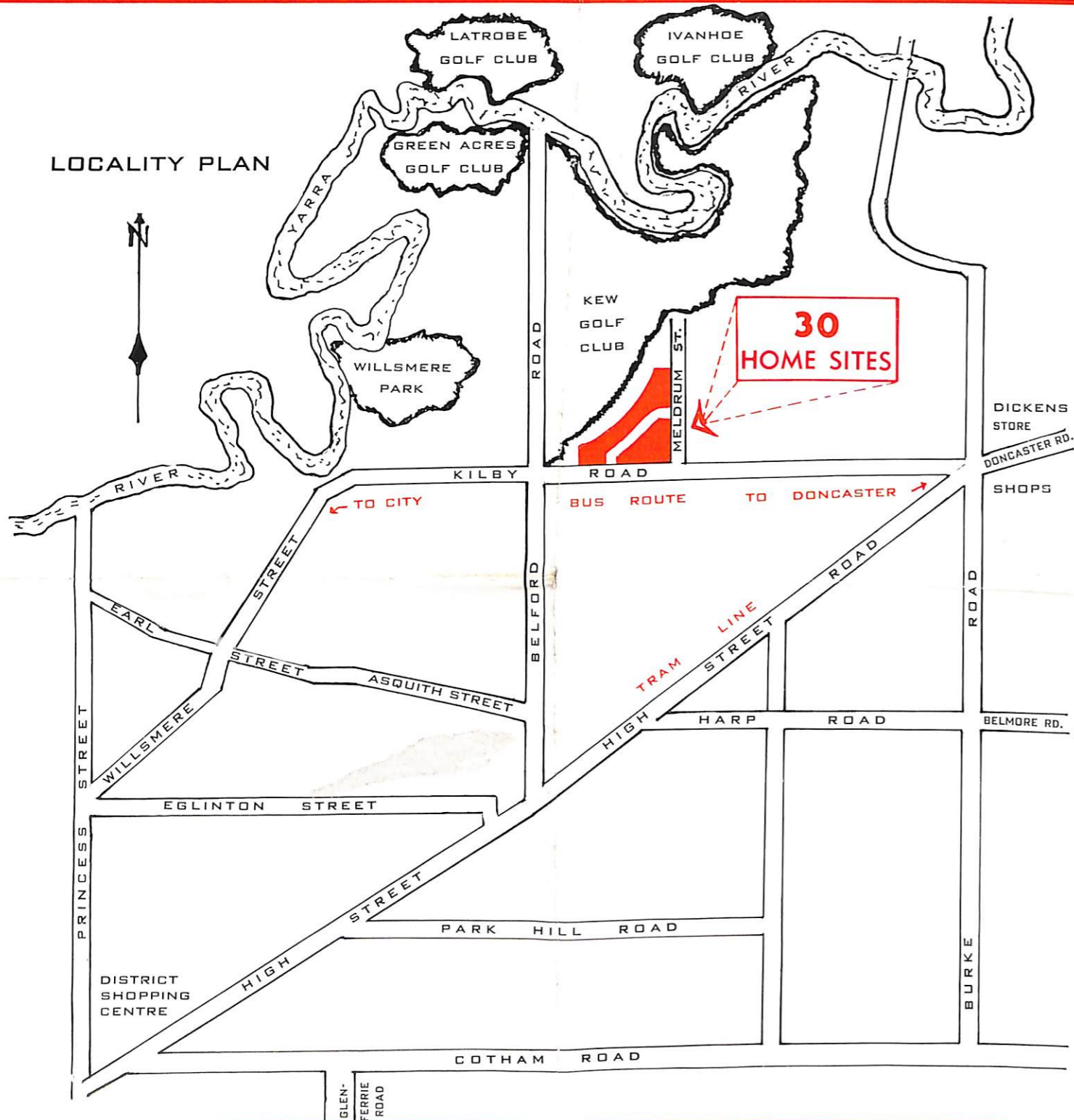


**AUCTION SATURDAY 20th NOVEMBER 1965 AT 2.30 P.M.**

**AUCTION SATURDAY 20th NOVEMBER 1965**

AT 2.30 P.M. IN A SEATED MARQUEE ON THE LAND

LOCALITY PLAN



**SUBDIVISIONAL LAND SALE**

UNDER INSTRUCTIONS FROM THE COMMITTEE OF

**THE KEW GOLF CLUB**

**30**

**CHOICE HOME SITES**

SITUATED IN

**KILBY ROAD, MELDRUM STREET & FAIRWAY DRIVE**

**KEW**

AN EXCLUSIVE LOCATION WITH DELIGHTFUL VIEWS  
OVERLOOKING THE LOVELY KEW GOLF LINKS AND YARRA VALLEY

**TERMS** One third Deposit (10% on signing contract 23 1/3% in 30 days).  
Residue by twelve equal quarterly payments. Interest 7%.

**TITLES** Certificate.

**SOLICITORS** Messrs. J. M. Shannon & Son.

AUCTIONEERS

**GEORGE G. HENDERSON PTY. LTD.**

M.L.C. BUILDING, 305 COLLINS STREET, MELBOURNE

61 2487

AUCTIONEERS

**GEORGE G. HENDERSON PTY. LTD.**

M.L.C. BUILDING, 305 COLLINS STREET, MELBOURNE

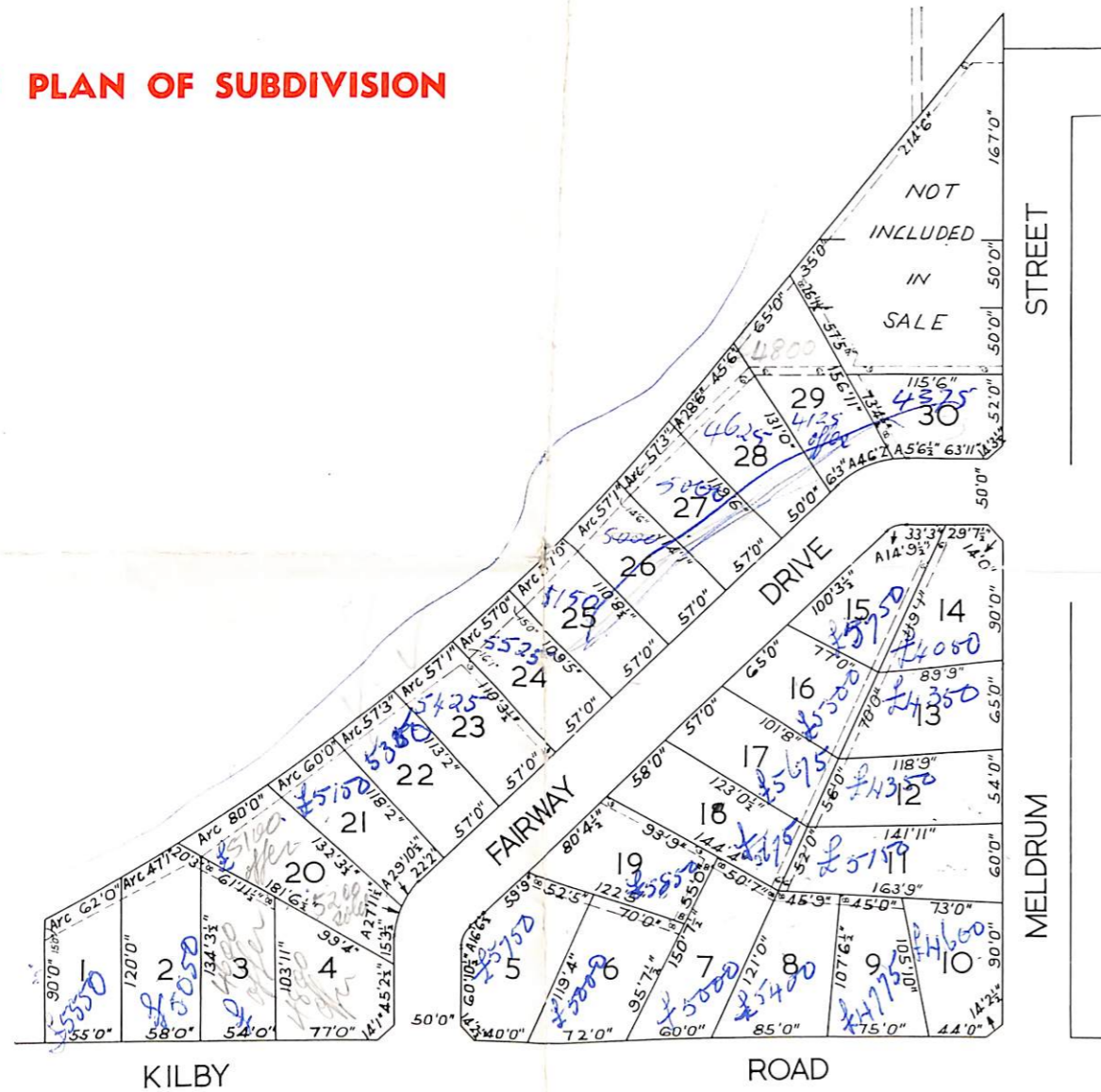
61 2487

2020-38-29

# KEW GOLF CLUB LAND SUBDIVISION

## 30 CHOICE HOME SITES OVERLOOKING THE KEW GOLF LINKS

### ● PLAN OF SUBDIVISION



### ● LOCATION

The land is situated within six miles radius of the Melbourne G.P.O. just east of Belford Road and adjacent land reserved by the M.M.B.W. as a future freeway.

### ● TRANSPORT

There is a direct M.M.T.B. Bus service along Kilby Road from Doncaster to the City.

### ● SHOPPING

Local shopping is available at Belford Road corner approximately 300 yards distant.

### ● COVENANT

One dwelling house only to be erected on each site.

### ● SERVICES

Gas, Water and Electricity are available.  
Sewerage is not currently available.  
Negotiations are at present taking place with the sewerage authority for sewer mains to be laid to serve all lots at the vendor's cost.

ONE OF THE LAST REMAINING SUBDIVISIONS IN THE CITY OF KEW PRESENTING AN UNUSUAL OPPORTUNITY FOR THE DISCERNING HOME BUILDER TO ACQUIRE AN ELEVATED SITE IN PLEASANT SURROUNDS

R.E.S.I. AUCTIONEERS

# GEORGE G. HENDERSON PTY. LTD.

M.L.C. BUILDING, 305 COLLINS STREET

MELBOURNE

61 2487