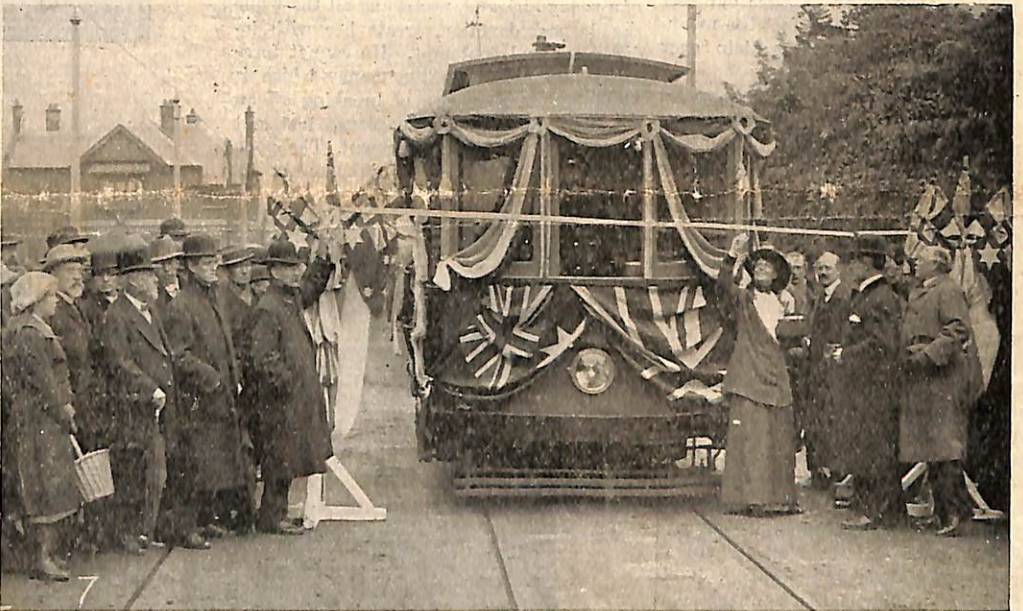
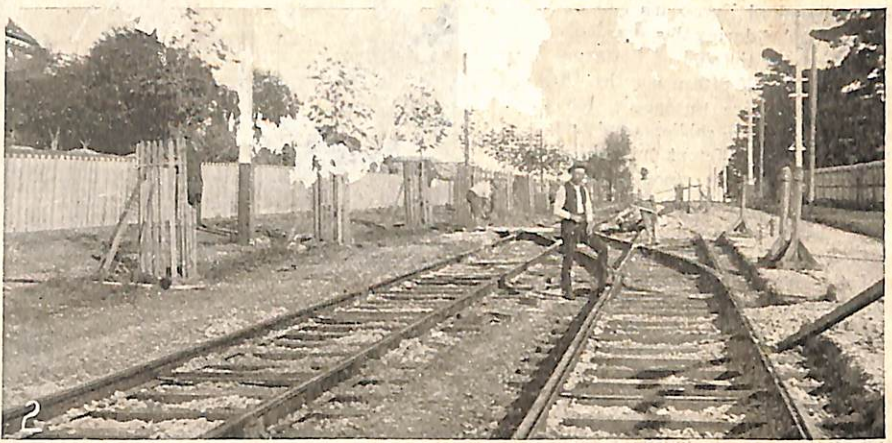


The 3 sep  
 photographs  
 were taken  
 by E & Nower

No 3. Batham Road  
 Kew  
 near Glenferrie Road



17 June 1913

The Leader

1. New Railway Gates at Glenferrie. 2. Burke-road Terminus. 3. Final Stages. 4. Ladies at the Official Opening. 5. The Acting Mayoress of Kew Cutting the Ribbon at the Kew Boundary. 6. Mayors and Councillors at the Kew Terminus. 7. The Mayoress Cutting the First Ribbon. 8. Guests at Hawthorn Town Hall

THE NEW ELECTRIC TRAMWAY, MALVERN TO KEW.

the island was selected as a field for the enterprise. The object of the British expedition was to reach the snow fields and fear, their yellow crests distended with fered from fever, his energies were quickly reached 4 feet 7 inches in height. Attempts were made to establish friendly relations