

No. A0010789W  
ABN 97 824 890

**Kew Historical Society Inc**  
Founded 1958      Incorporated 1987  
Still serving the community, families, schools,  
students, historians and other researchers.

P.O. Box 175,  
Kew Vic 3101

**President:**  
Mrs. Dione McIntyre  
Ph:

NEWSLETTER NO. 74.  
JANUARY 2004

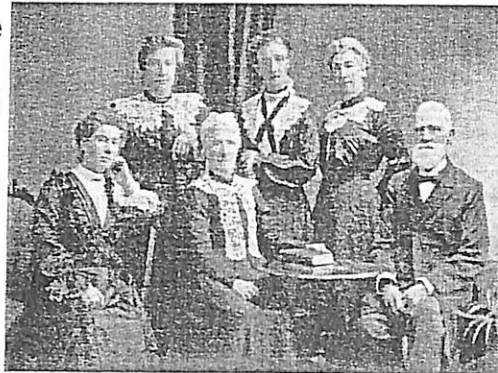
**Secretary:**  
Mrs. Thea Sartori  
Ph:

*Our next meeting will be on Wednesday, February 11th. at 8 pm in the Phyllis Hore Room, when our Guest Speaker will be Paul Hamilton from the Inner East Community Health Service. (See "Latest news on Court House" below for further information.)*

**Woollard Reunion**  
**22 February 2004, 1 pm to 4 pm**  
**Phyllis Hore Room**

On 1st November 1852, Charlotte (nee Lott) and William Woollard arrived in Melbourne from London on the *Diadem* and began a long family association with Kew. Their children were William, Joseph William, Walter Herbert, who married Rosa Morgan, William Storey, who married Harriet Creek, Charlotte, who married Levi Walton, Herbert Walter, who married Florence Lowen, Alfred Ernest, Sarah, who married William Jno Torode, Joseph, Alfred, who married Catherine Bogle, and Anna, who married Dick Allen.

J.V. Morgan with his wife and four daughters.  
Back row: Ada, Celia and Rosa  
Front row: Clara, Anna (wife) and James Morgan.



**KHS Connection:**  
Rosa Woollard (nee Morgan) was the great aunt of our foundation member, Clarrie Thompson, and grandmother of Jean Woollard and Life Member Dot Adams.

**Latest News on Kew Court House**

On Friday, 12 December 2003 a meeting was arranged between Andrew McIntosh, Member for Kew and Shadow Attorney-General, and representatives of the KHS committee, to discuss the present situation relating to the Kew Court House. Those present were Andrew McIntosh, Philip Slobom, Dorothy Benyei, Thea Sartori and Dione McIntyre

Andrew McIntosh confirmed that the building was now under the control of the Valuer-General and that it would be put out to Tender, and that there was no obligation to accept any Tender, and also that the Minister for Treasury and Finance, John Lenders, would look favourably upon a Local Government workable proposal.

Andrew McIntosh offered to arrange a meeting between ourselves and Mr. Rod Wilson, CEO of the Inner East Community Health Service at their premises in Burwood Road, Hawthorn (Old Hawthorn Post Office Building) with a view to a joint submission. The meeting was arranged for Thursday 18th December 2003 and those present were Andrew McIntosh MP, Rod Wilson CEO (IECHS), Kathy Johnson, Manager IECHS, Paul Hamilton, Health Services Manager IECHS, Philip Slobom and Dione McIntyre

The Old Hawthorn Post Office is now owned and operated by the Inner East Community Health Service. Individual rooms are let out to individual health practitioners, and there are areas available also for community use. The integrity of the building has been preserved.

## PRESIDENT'S MESSAGE

Dear Members and Friends,

Welcome to this, our 46th. year, and one in which your new Committee will endeavour to improve the services we offer to the community concerning the history of Kew.

In November we said farewell to our Past President, Lisa D'Acri, who left for her new position in Italy. We will miss her, and hope that it will not be long before she is back here with us.

Prior to the Annual Meeting, Lisa advised us that she would not be available for re-election. Being without a Secretary and Treasurer (Laszlo Benyei's term of office having expired), we were delighted when Thea Sartori agreed to accept nomination as Hon. Secretary and Margaret Robinson offered to act as Treasurer. Thea will be assisted by Betty Huston, who will continue to keep the minutes of meetings .

Tony Michael joins the Committee as our Honorary Digitisation Expert. He will be guiding and instructing a group of volunteers during the coming months to carry out this work, and would be pleased to hear from any of you who are willing to take part in this exercise.

Raymond and Rosemary Vaughan-Smith have now retired from the Committee, and we thank them, and also Laszlo Benyei, for their continued and gracious contributions.

The last two events of the year tested the skills of our members. In the absence of the speaker at the October meeting, those who had brought artworks along for assessment ended up speaking about their own contributions, with additional comments from the audience.

The end of year function was a happy social occasion which featured the engineering skills of Graeme Lindsay, who devised a moving set depicting Kew before white habitation as part of an ongoing series of short sketches about a fictional family of early settlers\*, the audience having been "warmed up" by our own nonagenarian cornetist, Ken Sillcock , who led a singing tutorial and accompanied the choral rendition of alleged "National Anthem of the Ancient Britons" to the tune of "Men of Harlech".

**This year the Kew Court House will continue to be the subject of much of our attention.**

We will again participate in the Kew Festival in March with a three day display in the Phyllis Hore Room , organise the Historic Bus Tour, and take part in the Street Parade.

There will be a fund-raising stall in conjunction with the display, and **your contributions** of fresh goods for sale are requested.

**Volunteers** are also requested to assist with practical demonstrations for small groups from local schools on Monday, 15th. March.

As this promises to be an eventful year, we hope that you will be able to attend our first meeting for 2004 on Wednesday, 11th. February, when further details will be available.

Yours sincerely,  
Dione McIntyre

*\*The sketch was made possible also by the skills of Dione McIntyre, who wrote the sketch and painted the realistic backdrop of the bush. - Ed.*

**KEW FESTIVAL**  
**Saturday 13th., Sunday 14th., and Monday 15th. March.**

**FESTIVAL HERITAGE DISPLAY**

Again we will set up in the Phyllis Hore Room a display of selected items from our large archival collection, depicting the way of life and customs of earlier generations. The Display will be open from 10 am to 4 pm on Saturday, 13th, Sunday, 14th. and Monday, 15th. March.

Some of the local schools in Kew have been invited to bring groups of their pupils to visit the display at rostered times on Monday, March 15th. to be conducted to the various stands in succession for demonstrations and hands-on experience of the use of items on show.

**FREE HISTORIC TOURS**  
**On Sunday, 14th. March**  
**BUS TOUR**

Courtesy of Kew Festival Committee  
 Meet outside the Phyllis Hore Room, Civic Drive, to board the buses at 1.45 pm for a 2 pm departure, returning about 4 pm.

**BOROONDARA CEMETERY TOUR**

Meet at the cemetery gates at 1.50 pm for 2 pm walk through the historic graves with commentary.

**It is essential to book for both these tours** Phone

**JOBS TO BE DONE. CAN YOU HELP ?**

We will need all the help we can muster to carry out all these tasks:

1. **Setting up** the display from 10 am on Friday, March 12th.
2. **Manning** the display stands, 10 am to 4 pm Saturday and Sunday, and 9 am to 3 pm Monday, helping with school groups. ..
3. **Dismantling** the display and returning the items into storage after 3 pm on Monday, March 15th. .

Members will be asked to indicate what times they are available to help.

**FUND RAISING STALL**

Once again, a fund raising stall will be conducted in conjunction with the Display. Your contributions of fresh goods for sale are requested. This year we DO NOT propose to handle second-hand goods.

*Continued from page 1*

Recognition has been given to the history of the building, particularly its facade and front office, and on the walls are reproductions of early photographs of Hawthorn and Kew. The Department of Treasury and Finance is asking \$1.5 million for the Kew Police Station and Court House buildings, and their Architect has estimated that \$800,000 will be needed to make the buildings serviceable.

They are also proposing a development on land at the rear of the building. This would be expected to cost \$3.5 million.

We are the only community group who has so far expressed interest in occupying the building, and therefore a joint submission is proposed.

We have stated that our organisation is completely voluntary and that we would not be in a position to contribute financially.

The Inner East Community Health Service would own the building.

Paul Hamilton offered to speak to our members about the Health Service and it has been arranged for him to be our Guest Speaker at the February meeting.

Further meetings would have to be arranged if our members wish to proceed with the proposal.

There has been no indication that the Boroondara Council is prepared to acquire the buildings for community use.

**COMMITTEE FOR OCT 2003 to SEP 2004****PHONE**

<b>President</b>	Mrs. Dione McIntyre
<b>Vice President</b>	Miss Lisa D'Acri
<b>Vice President</b>	Mrs. Jill O'Brien
<b>Secretary</b>	Mrs. Thea Sartori
<b>Minute Secretary</b>	Miss Betty Huston
<b>Treasurer</b>	Ms Margaret Robinson
<b>Assistant Treasurer</b>	Dr. Laszlo Benyei
<b>Archivist</b>	Mrs. Dorothy Benyei
<b>Consultant</b>	Mrs. Jill O'Brien
<b>Consultant-Architect</b>	Emeritus Professor Peter McIntyre
<b>Co-Editors of Publications</b>	Mr. Ken Sillcock
	Ms. Margaret Robinson
	Mr. Tony Michael
<b>Committee Member</b>	Miss Joan Sims
<b>Committee Member</b>	Mr. Graeme Lindsay
<b>Committee Member</b>	Mrs. Rosemary Smart

**THE PROGRAM**

This year, as usual, we will meet monthly in the Phyllis Hore Room at 8 pm on the second Wednesday of each month unless otherwise announced.

We are hoping to have Guest speakers talking about storage and care of old photos and photo restoration, the Great 19th. Century Exhibitions in Melbourne and Sydney, and Yarra Bend Park

The full program will be announced when arrangements have been finalised. Be assured that you will not be disappointed with the Committee's efforts.

**AN INVITATION TO JOIN US**

We invite all interested people to join our Historical Society and enjoy our speakers and our discussions on local history in an atmosphere of warm friendship .

<b>OUR MODEST MEMBERSHIP FEES</b>	
Individual	\$10 pa
Family	\$12 pa
Student	\$2 pa

Students are especially welcomed at a low annual subscription, and we are glad to help them if they need information for projects on local history.

We also welcome teachers of subjects such as history, human geography, and social sciences in local schools and tertiary colleges.