



CAULFIELD CONTACT

A six-weekly publication produced by
Caulfield Council for the residents of this City.

Vol. 5 No. 3 Thursday December 7, 1978



IF IT'S NEWS
PHONE US! 524 3333

Merry Christmas



● When Father Christmas visited the Lirrewa Grove Children's Neighbourhood Centre, Mauro Felici and Lisa Filliponi couldn't wait to sit on his knee and tell him what they wanted for Christmas.

bumper Christmas issue

- What's to happen at the Neerim Road and Glenhuntly Road railway intersections? A special supplement which presents the Victorian Railways' and an independent consultants' view on the subject accompanies this edition of Contact — centre pages.
- The Big Beginning — Caulfield Council's January School Holiday Program at the Community Centre and Arts Centre — pages 6 and 11.
- Caulfield Community Day — this Sunday December 10, Caulfield Park. A fun filled, family day in the sun. A giant fete — page 7.
- Out and about over the holidays — the subject of Contact Review — page 12.

Caulfield City Council will be in recess in January and so will "Caulfield Contact". The next issue of this paper will be late in February 1979

Council Services Over Xmas Council Offices

Council Offices at the Town Hall will be closed on Monday December 25, Tuesday December 26, Monday January 1 and Tuesday January 2, 1979.

GARBAGE COLLECTIONS

Garbage will not be collected on Monday December 25 and January 1, 1979.

GARDEN REFUSE SERVICE

The Garden Refuse Service at the Council Depot will not be available on Saturday December 23, Monday December 25, Tuesday December 26 and Monday January 1, 1979.

CAULFIELD CITIZENS ADVICE BUREAU

The Citizens Advice Bureau will close from Friday December 22 until Monday January 15, 1979 when a holiday emergency roster will operate — Mon., Wed., Fri., — 10 a.m.-1 p.m.; Tues., Thurs., — 7 p.m.-9 p.m. Full operations commence from February 5 — Mon.-Fri. 10 a.m.-3 p.m.; 7 p.m.-9 p.m.

FREE LEGAL ADVICE SERVICE

The free legal service, which operates between 7 p.m. and 9 p.m. on Wednesday evenings, will close after Wednesday December 13. Its expected reopening date is Wednesday February 7, 1979.

FREE ARCHITECTURAL ADVICE SERVICE

The free architectural advice service, which operates between 7 p.m. and 9 p.m. on a Tuesday evening, will close after Tuesday December 12. Its expected reopening date is Tuesday February 6, 1979.

CAULFIELD-MALVERN REGIONAL LIBRARY SERVICE

The Caulfield-Malvern Regional Libraries will close from 12 noon on Saturday December 23 and re-open for usual hours on Wednesday January 3, except for the Caulfield City Library in Maple Street and Malvern City Library in High Street. These will open on Wednesday December 27, Thursday December 28 and Friday December 29 from 10 a.m. to 4 p.m. each day.

profile, profile profile, profile, profile, profile, profile, profile

bob bruner says do it!

"Bob Bruner is getting to be called more and more a fitness evangelist. People ask what's this evangelism stuff? One has to have answers to satisfy people's questions, so I say I like to bring the spirit of fitness into your heart and your body for your soul."

That's how the 40 year old Caulfield physical education specialist and consultant describes himself.

Even if you're not impressed by his qualifications — BA in Social Science, MA in Political Science, MS in Physical Education, member of Australian Sports Medicine Society, Australian Health, Physical Education and Recreation, American Sports Psychology Society etc., etc., etc., you'd have to give him full marks for the way he has organized his Aerobic Fitness and Total Health Programme.

People arrive on Bob Bruner's doorstep either because they have been referred by a doctor or because they feel generally unfit and need help.

Bob starts off by pointing out that he does not run a health club, he runs a preventative medicine programme. There's no hard sell. The person is given a brochure which outlines the programme and is told to go away and think it over.

For the person who decides to give it a go, the programme starts with an interview with Bob. Two questionnaires are completed, a History and Physical examination and a Physical Activity Profile which covers current exercise patterns,

health habits and diet. The information stored on these questionnaires is kept as a history of the client.

Bob then carries out two motivational tests. "People have different levels of frustration and different levels of anxiety, some people quit easier, some are more aggressive and some more passive. In this way I determine those who need to be pushed and those who need to be handled with a kid glove," Bob says.

Four short tests are then carried out on the client's back to evaluate its strength. Bob must take this into account when designing each person's programme.

"I then give people my fitness kit," says Bob. "I want them to understand why they're getting fit and to understand their body."

The literature covers a wide range of subjects like high blood pressure, diet, "how to make your fitness training more effective," "how to read your heart rate," emergency heart-lung resuscitation and the cholesterol content of foods.

Bob then designs an individual programme for each client. His programme is held Monday to Friday at 6.30 a.m. and on several evenings at Melbourne High School.

Bob encourages his clients to start by attending at least three mornings weekly. Everybody works together — Bob sees the socialisation aspect of his programme as being of critical importance.

He will also formulate a programme which can be carried out at home or on holidays. This incorporates nutrition, meditation, relaxation, yoga, strength — flexibility and aerobic exercises.

A daily record is kept of each individual's performance — this includes pulse rates and general psychological health. Bob becomes totally involved with

his clients, he even knows their birthdays and sends them a card. If they fail to turn up for a programme, he rings them to find out where they are.

So just exactly what is the aerobic fitness that Bob promotes? According to Bob it's "a continuous, rhythmic activity that strengthens the heart and lung action and promotes muscle flexibility."

It produces a beneficial training effect in the heart, arteries, lungs and other elements of the circulatory and respiratory systems of the body.

Essentially it consists of walking, jogging, running, cycling, jumping and swimming under controlled conditions, combined with stretching and flexibility exercises that facilitate warming up and cooling down.

This integrated programme of rhythmic activity, aerobics and diet will enable you to achieve new levels of physical fitness, mental alertness and emotional stability.

Aerobics is as natural as breathing. It is a method of expanding oxygen consumption within the body. Aerobic exercises, combined with diet patterned to your individual needs, can win you improved appearance, weight and appetite control, and a less stressful healthier life," Bob says.

As well as his standard programme, Bob runs special programmes in lower back, pre-skiing, tennis and squash, over 50's fitness, cardiac rehabilitation and industrial fitness.

Bob has aimed his programme at people over 21. Many of his clients are in their fifties and sixties. Early in the new year Bob is starting a new programme for obese children, an area in which he has shown vital interest for many years.

If you would like to find out more about Bob Bruner and his programmes phone him on 527 7965.



Mayor's Message



"At the approach of the festive season and the New Year one can't help but turn back the clock and think of the happenings of the past few months."

How exciting was that day, August 4, when the City of Caulfield gave to the Third Ordnance Services Unit, Royal Australia Ordnance Corps, freedom of entry to the City of Caulfield.

How proud we all felt when our Governor-General, Sir Zelman Cowen and Lady Cowen paid us a visit.

I am certain the residents of Camden Court hold

a special place for Sir Zelman and Lady Cowen after their visit.

I am pleased to report on behalf of the Council that all works as regards roads and footpaths are proceeding as planned. Tree planting in the streets has made a great difference.

Many of our residents will go away on holidays. To each of them I say take care, particularly on the roads, swimming and fishing. Enjoy your well earned holidays by being careful.

May I, on behalf of the Mayoress, Councillors and Town Hall staff wish you all, citizens of Caulfield, seasons greetings and a new year full of good health and bright expectations.

Geoff Patience, Mayor, City of Caulfield

\$144,000 IN FEDERAL FUNDS FOR CAULFIELD ROADS.

Henty M.P., Ken Aldred has announced that roadworks in and around the City of Caulfield will receive a total of \$144,000 under two Federal grants.

Mr Aldred said that the grants and the amounts from each were: Urban Arterial Roads Construction Program \$59,000, and the Minor Traffic Engineering and Road Safety Improvements Program (MITERS) \$85,000.

"These funds are made available by the Commonwealth under the States Grants (Roads) Act 1977", Mr Aldred said.

"The Commonwealth has, under its road legislation placed great emphasis on local roads which mainly come within the responsibility of Local Government."

"Under the Minor Traffic Engineering and Road Safety Improvements Program (MITERS) the Commonwealth has made funds available to improve safety on the roads during 1978/79 therefore helping to reduce the incidence of road accidents."

The City of Caulfield has been granted \$85,000 to enable projects under the MITERS program to be carried out.

Project details are:

- Princes Highway East / Belgrave Road — modify channelisation, \$25,000.
- Princes Highway East / Darling Road — modify channelisation, \$25,000.
- Princes Highway East / Chadstone Road — modify channelisation, \$25,000.
- North Road — new pedestrian signals between Carlyon Street and Lillimur Road, \$10,000.

A further \$59,000 has been granted to the City of Caulfield under the Urban Arterial Roads Construction Program.

Mr Aldred said "Funds made available under this Program will enable boom barriers to be installed at the Murrumbidgee

railway crossing and street lighting on Princes Highway East, from Waverley Road to Warrigal Road."

"The allocations made under these two Programs Minor Traffic Engineering and Road Safety Improvements (MITERS), and Urban Arterial Roads Construction shows the importance that the Federal Government places on maintaining a proper roads system."

Don't Forget

It gets pretty hot over the Christmas holidays. If you have a newly-planted tree in the nature strip in your street, be kind to it and water it regularly.

Free Tests for Leaking Microwaves

Along with new technology comes new problems.

Microwave ovens which are rapidly becoming a standard appliance in take away food shops, milk bars and other commercial premises have become a source of concern for local health surveyors. They are susceptible to microwave leakage.

Caulfield Council's Health Department has begun regular testing of these ovens as part of its routine inspections made on commercial premises.

Where leakages have been detected, the proprietor of the business has been asked to have the oven repaired.

HOME SERVICE

For local residents who have installed microwave ovens in their kitchens, a free leakage test service will be available starting in January.

Anyone requiring the service should phone the Council's Health Department on 524 3333 and make an appointment for a Health Surveyor to call.



Local shopkeeper Brian Ibbott with Health Surveyor Bernie Heffernan.

Odyssey Big Band



It's a 19 member jazz rock band with a repertoire from Jesus Christ Super Star and Star Wars to Whiter Shade of Pale and McCarthur Park and it's the star attraction of Community Day.

Winners of the 1978 "New Faces" finals, the band has become a regular feature on television in Sydney and Melbourne.

Don't miss Odyssey Big Band on Community Day, December 10 at Caulfield Park — two performances 3.30 p.m. - 4.15 p.m. and 5 p.m. - 5.45 p.m.

DRIVER URGENTLY NEEDED

A local group of disabled people is in urgent need of a driver for its small bus. An endorsed licence is not required. If you can help please phone Mr Fitzpatrick on 568 0894.

Sad to see her go.

Mrs Margaret Hill, who has been Caulfield Council's Home Help Supervisor for the past thirteen years is retiring in January.

When Mrs Hill joined the Council in 1965 she had a staff of eighteen home helpers. Today she supervises a staff of 53.

Along with the expansion in the service has come a major change in its orientation. It originally provided emergency care and help for mothers with new babies. Although this type of care continues, the service now is principally a long term supportive one catering for elderly residents.

According to Mrs Hill, it has been a job filled with excitement and anticipation, "Each time I pick up the phone, I must be prepared for an emergency," she said. "I have been overwhelmed by the brave people I have met and filled with joy by the new babies".

Mrs Hill's career in Home Help began more than twenty years ago when she worked as a home helper in another municipality.

During her years at Caulfield she has been actively involved with Quota and is current Chairperson of the Service Committee and secretary of the Club.



Margaret Hill

She is also on the Steering Committee for the newly-formed Early Planning for Retirement Group.

Caulfield Contact wishes Margaret Hill a healthy and happy retirement.

Australia Day breakfast

Caulfield's Australia Day Champagne Breakfast has become an annual event celebrated by hundreds of local residents.

Guests are asked to make a donation of \$6 to the Mayor's Charity Appeal which goes this year to the Caulfield Hospital.

Anyone wishing to attend the 1979 Australia Day Breakfast, which will be held on Friday, January 26, at 7.30 a.m. in the Town Hall, should write to the City Manager, City of Caulfield, P.O. Box 42, Caulfield or call at the Town Hall and an entree card will be issued.

Buy a Xmas Cake!

Support Lions!

The Lions Club of Carnegie is grateful for the overwhelming response shown by readers of 'Contact' to its annual Xmas cake sale.

Cakes are now available and in a larger sized pack, 1.5 kg of fruit cake sealed in a plastic cover, at \$3.50.

A Xmas cake makes an ideal, inexpensive Christmas gift.

Last year the Club sold 600 dozen and the proceeds were directed towards the procurement of badly needed new hospital beds for the Caulfield Hospital; the fight against cancer; national heart projects and the alleviation of blindness.

Lions is anxious to extend its activities in the sale of cakes so that it may continue its good work in the alleviation of human distress.

Orders may be placed with Jim Borrell — 211 7917, Jim Carr — 569 7494, Gerald Godfrey — 56 4491 or Roy Kerr — 578 4016.

New Books for Holiday Reading.

A small selection of recent books added to the Caulfield-Malvern Regional Libraries is listed below. Those which are not at your local library may be reserved and obtained on inter-library loan.

The Batsford Encyclopedia of Crafts, Australian Edition by H.E.L. Andrew. Complete information on 135 selected crafts — from airbrush through to woodcut.

Bushwalking in the Victorian Ranges by F. W. Halls. A book for bushwalkers and nature lovers alike.

Exploration North: Australia's wildlife from desert to reef by H. J. Lavery. A fascinating record of Queensland's natural environment, which includes pictures of some rarely photographed animal species.

His Weird and Wanton Ways: the secret life of Howard Hughes by R. Mathison.

Farwell recital: further memoirs by G. Moore. Gerald Moore's reminiscences of his later years.

The Sound of Their Music: the story of Rodgers and Hammerstein by F. Nolan. The warm, witty and sometimes sad story of the two men who gave the world some of its favourite songs.

Australian Inventors by L. Port. An examination of Australia's most distinguished inventors and their inventions, including the Sunshine harvester, Shepherd castors and the push button can.

Lincoln's Place by C. Thiele. Delightful illustrations by Robert Ingpen enhance this story of an Australian pioneer farm.

The Complete Liar by P. Vincenzi. A fascinating study of all aspects of lying — including lies told in love, marriage, work and advertising.

All colour guide to houseplants. Woman's Day period.

Books for children and all the family to share.

Timothy and Gramps by Ron Brooks. Timothy didn't like school much and he had no special friends, he thought, except for Gramps. Ron Brooks, an Australian author and illustrator of previous award winning books has created another picture book to delight the eye and warm the heart.

Exploring: getting to know your world; Harmondsworth, Kestrel Books. Where better to start exploring in the summer holidays than in your own backyard? This Australian book, one of the very popular Practical Puffin series shows children what to look for and suggests places to explore. Easy to read with lots of clear illustrations for kids who like doing things themselves.

Mr. Bear's Meal by C. Kuratomi. A large picture book for younger children. Mr. Bear who has had many different adventures in previous books, decides to take a holiday abroad but finds it all very confusing.

The Nimbin by J. Wagner. Phillipa's summer holidays started off being ordinary enough until she is adopted by a little creature, a nimbin, who one way and another gets Phillipa into all sorts of trouble.

Jenny Wagner is the author of several successful Australian picture books.

Twin Talk



● Can you tell who's who? Of course it's no problem for the girls' mother, member of Twins Club Mrs Margaret Young. It's Katie (left) and Morag.

One in eighty births in Australia is multiple.

In the light of such a fact it is not surprising that 'Mothers of Twins' clubs have sprung up throughout the country. There are more than 50 clubs in Australia and seven in Melbourne.

The Melbourne Mother of Twins Club — Southern District formed in 1972. Membership is open to all mothers or parents of multiple birth children — whether natural or by adoption.

The club's basic aim is to provide a means of communication for sharing information on the care and raising of multiple birth children and to provide social meetings for members and their families.

Through the club new mothers of twins have an opportunity to talk to mothers with older twins and gain advice on a wide range of matters from just how to cope with two babies at once to breast feeding and how to include other children in the family.

A monthly newsletter called "Twin Talk" is available to members and is full of handy hints, second hand goods for sale as well as information on the "social scene".

A wide range of literature including results of latest studies on twin rearing is offered to members.

Spokeswoman for the Southern District club, Mrs Margaret Young, says that members are pleased to see in recent years Universities and other research institutions studying twins' behavioural development instead of continually using twins to study other subjects.

A study currently getting underway is being conducted by Dr. David Hay and Dr. John Mitchell at Latrobe University's Department of Genetics and Human Variation.

It is a general study of the development of twins and single-born children up until the age of 15 years. It is felt that this study will help in understanding some of the reasons why twins differ from each other and from other children in the family — things that parents notice but which neither they, nor scientists as yet can often explain.

Members of three Melbourne twins clubs are already taking part in the study, however more twin are needed.

More information about the Southern District Twins Club and the Latrobe Study can be obtained by phoning Mrs Margaret Young on 528 3054.

HIRE A STUDENT

Need someone to walk the dog, lick stamps, sweep floors, type envelopes, do research, dig drains, wash dishes, drive a truck or any other task?

Why not employ a Caulfield Institute of Technology (CIT) student?

Their summer vacation begins in November and lasts until February 1979. Many students depend on work during this time to continue their studies.

In addition, a great number of students would welcome the opportunity to gain employment experience related to their course.

They are prepared to turn their hand to any task so if you can offer any kind of work we would be pleased to hear from you. Contact the CIT Careers and Employment Service, phone 211 7722, ext. 322.

Early Plan on Domestic Affairs.

In spite of the petrol strike 96 local residents turned up for the second general meeting of the Early Planning for Retirement Caulfield Group on Wednesday, November 15 at Caulfield High School.

Guest speaker, Peter O'Donohue gave sound advice on domestic legal affairs.

Activity groups already in action are the Dine Out, Travel, Music Appreciation and Card groups.

A follow-up casserole tea was held on November 29 at

Caulfield Grammar as a "getting to know you" function.

The group is still unsure of its name and so a publicity campaign will be held in the New Year in conjunction with a competition to iron out the problem.

Want to become a member — call Frank Robinson on 617 9532 for a membership form.

FESTIVAL OF CHRISTMAS MUSIC

Capture the Christmas spirit at the Caulfield City Choir's annual Christmas concert.

Under the conductorship of well known tenor — Ian Lee the Choir will perform a varied programme of familiar Christmas music including well known Christmas anthems, carols and part songs and favourite traditional carols for all to sing.

Guest organist — Peter Nicholls — will perform on the Church's new tracker action pipe organ.

The venue for the concert this year is the Denbigh Road Uniting Church, Denbigh Road Armadale. The concert will commence at 8 p.m.

Tickets are \$3.00 adults, \$1.50 pensioners, students and children. Concession prices are available for parties of ten or more.

Enquiries telephone 523 6746 or 29 3889.

Holiday Care for Elderly.

Caulfield's Hostels for the Aged, Camden Court and Heathlands provide accommodation and high quality care for older residents.

Residents live in "motel" type units with community lounge and dining facilities.

At each of the hostels one self-contained unit is available throughout the year which enables relatives of older people in Caulfield to have a holiday, knowing that their loved person is well cared for.

People eligible to take advantage of this facility are those who are residents of Caulfield, over

the age of 60, who are ambulant and can dress themselves.

The minimum time for a holiday is one week and the maximum is four weeks.

The cost is \$55 per week and a deposit of \$55 (one week's rental) will be required to confirm the booking.

Enquiries should be made to Lyndon Jaffer at the Caulfield Town Hall on 524 3333.

Can you drive?

The Southern Region Association for the Disabled is a self-help organisation of disabled persons who act on their own initiative to hold meetings, outings and tours.

The group has access to a bus from Caulfield Hospital for their activities. It does not require an endorsed licence to drive.

Each month, the group requires a volunteer driver to take members to and from the outing they have organised. Any

responsible driver with an ordinary licence would be welcomed.

Can you help SRAD. If so, please give Hale Meserow, Manager, Recreation and Culture, a ring on 524 3253.

St Mary's Calisthenics Club



The St Mary's Calisthenics Club conducts classes at St Mary's Church of England Hall in Glen Eira Road (between Orrong and Kooyong Roads), Caulfield each Tuesday.

Age groups range from tiny and subs — 4-9 years, junior — 9-12 years, intermediate — 12-16 years and senior — 16 and over.

The lessons, which last for one hour, include exercises, folk dancing — song and dance and plastics — movement to music. The Club also participates in calisthenics competitions and holds an annual concert. Further information may be obtained by phoning Mrs L. Mills on 523 6856.

Come to the Community Fair!

Henley on the Huntingdale Tech. Oval? Paint a face competition; "Hyde Park Corner" for soap box orators; write your own graffiti walls; displays, demonstrations; stalls...? What is going on?

It's Huntingdale's first Community Fair, to be held on Thursday, December 14 from 3 p.m. to 9 p.m.

The Fair will be a pre-Christmas fun night, with stalls, barbecues, activities for kids, bands, hobby corners, exhibitions, Christmas carols, music, theatre, films, clown and even Father Christmas himself.

Fair organizer, Brenda Perkins, is also the Community Education Officer at H.T.S. She says there is an open invitation to any local group or individual who wants to participate.

"We hope people or groups will join in the merry-making by, perhaps, setting up a stall, organizing an exhibition, or demonstrating or staging an event on our oval (or at the show) or in one of our buildings."

Brenda says planning is already underway for displays and demonstrations of students' activities. As well, there will be a chess tournament, "rambles" in the school reserve, displays of ethnic and square dancing, story readings in the school library and a wide variety of stalls set up around the oval.

Music will be provided by ethnic bands, buskers, and the Clayton Technical School Band. For more information ring Brenda Perkins on 579 4594.

"Effective Parenting"

Cheryl Leber and Robyn Hay, two Psychologists working for the Education Department have found that many parents have expressed an interest in looking at effective ways to develop better parent-child relationships.

Parents today are bombarded by a barrage of information, often contradictory, on the topic of child-raising techniques. They are bestowed generous advice from far and near — from grand-

parents, friends, next-door neighbours, vocal child-raising experts, journalists, books, the media — and it is no wonder that people are feeling general uncertainty and bewilderment about effective parenting.

For many centuries society has demanded special training for all kinds of people who work with children — for teachers, counsellors, psychologists, social workers. But parents, the people who are most important in the children's lives, are usually given no help and are expected to take up the task of child-rearing without special training.

It seems that many parents are now questioning the value of using "yesterday's child rearing techniques with today's

children." They are finding that the effects of social changes — with a shift towards democratic thinking and towards social equality — has created challenges which many parents are ill-equipped to meet.

Ms Hay and Ms Leber work in a number of schools in the Caulfield and Oakleigh inspectorates and they decided to start a "Parent Guidance and Discussion Group" in one of the schools.

Twenty parents of children in the infant department at Carnegie Primary School bravely enrolled in the course. They met on Tuesday nights (7.30 p.m. to 9.30 p.m.) for seven weeks and discussed topics about child development and behavioural

management at home. Special emphasis was placed on:-

● 'Discipline' (acceptable and unacceptable behaviour and ways of handling it).

● Communicating more effectively with children.

● Improving parent-child relationships.

● Other difficulties commonly encountered in raising children.

The parents found the discussions to be worthwhile and enjoyable. The small group atmosphere encouraged them to become actively involved in sharing experiences of common concern and realizing that their problems were not unique. The atmosphere in the group tended to be very informal, friendly and supportive, with no compulsion to contribute.

It was unfortunate that so few fathers enrolled in the group —

the program is more effective when both parents attend.

The participants came from a wide variety of backgrounds — housewives, mature-age students, business men and women. The level of previous education of participants varied from form four standard to university. People from all walks of life were welcome to attend.

All participants recorded that they benefited from attending the sessions. The group leaders also enjoyed being with the group and learned from the participants. They all learned "to have the courage to be imperfect," and most seemed to gain confidence in their parenting ability.

Because the group was such a success, it is planned that more "Parent Guidance and Discussion Groups" will be run in different schools next year.

Oakleigh Counselling, Guidance and Clinical Services has psychologists and social workers who will be offering some day and evening groups to schools in the Caulfield-Oakleigh Inspectorates.

So parents, be on the look out for a 'Parent Guidance and Discussion Group' starting up in your children's school.

Go along and share ideas and learn with others. You, too, can be a more effective parent! If parents are interested in being part of a Parent Group, they should make enquiries to the Principal of their children's school.

A good hot meal is something to celebrate



At Christmas time people from all walks of life come together to celebrate. The elderly folk pictured above with the Mayor of Caulfield, Cr Geoff Patience, and volunteer Alan Blankfield are all recipients of Weekend Meals on Wheels.

This service, which has been operating for four years, is run by a group of twenty volunteers. Last Sunday, December 3, the volunteers gave their customers a Christmas party at the Old Post Office in Hawthorn Road, Caulfield.

Each weekend 40 lunchtime meals, prepared at the Southern Memorial Hospital, are delivered to the frail elderly still living in their homes.

Additional volunteers are urgently needed to help maintain this vital service. If you can help please phone Lyndon Jaffer at the Caulfield Town Hall on 524 3250.

Aid for the Blind

The H.M. Lightfoot Centre (previously the Blind Citizens' Community Centre) at 454 Glenferrie Road, Kooyong, has served for 50 years as a central meeting place for the blind of Melbourne.

Six hundred people use the Centre regularly for recreation, club activities and rehabilitation services.

An important section of the Centre at Kooyong is the new modern Low Vision Clinic which is recognised as one of the best in the world. Assessment and prescription of low vision aids and other help is given to people with low vision resulting from severe visual defects.

Services provided by the Lightfoot Centre are free.

If you would like to help as a volunteer, driver or on an auxiliary or require further information on services available, contact the Volunteer Liaison Officer at the H.M. Lightfoot Centre on 20 8701 (9 — 5).

Patients need your help

The Bethlehem Hospital Multiple Sclerosis Unit needs willing helpers.

If you are a patient person who enjoys helping people, your assistance would be gratefully received. No nursing skills are needed.

You could help by feeding patients at mealtimes, reading, writing letters, on outings, pushing wheelchairs, doing manicures or hairdressing or even assisting during arts and crafts sessions.

If you can help, Veronica Kelly would love to hear from you. She may be contacted on 596 2853, ext. 271 (Bethlehem Hospital) or 569 4722 (home).

An Open Invitation

The Quota Club of Caulfield has much pleasure in inviting all residents to visit their stall at the Caulfield Community Day in Caulfield Park on December 10, 1978.

Sweets, cakes, trash'n treasure and other goodies will be for sale — you may even find those last minute Christmas gifts you have to buy. We have lots to offer the whole family including pony rides for the children.

Come along and visit us — bring your family — we look forward to seeing you.

Breast Cancer Help in rehabilitating

The Mastectomy Association of Victoria was founded in 1975 by a group of concerned women who had suffered from breast cancer and who were anxious and willing to help others with their rehabilitation.

The association has three basic aims —

- to boost morale and to encourage women rehabilitating in their fight to overcome the operation and regain health and spirit.
- to advise on how to go about buying and getting sound advice on the most suitable type of bra and prosthesis.
- to promote an awareness that is desirable for a mastectomee to lead an active and useful life.

Quarterly meetings are held for members and friends where guest speakers discuss topical matters.

Further information about the association can be obtained by phoning Miss Lottie Boyd on 56 5035 or the Public Relations Officer on 83 6003.

Many happy returns



Caulfield Toddlers Playgroup celebrated its first year at 'Oaktree House' in Hawthorn Road, Caulfield last month.

The playgroup offers an opportunity for mothers in Caulfield with toddlers between 18 months and kindergarten age to get together and enjoy each other's company while the kids play.

Oaktree House is equipped with creative play and building toys, a library and puzzle area, a painting room, woodwork facilities and a kitchen area as well as sand pits and swings outside.

Throughout this year ten groups met on a once a week

basis involving around 120 families in Caulfield.

Each month a speaker activity night is held when parents are addressed on subjects ranging from psychology and dental care to first aid and hairdressing.

Term one for 1979 starts on February 5. Enrolments can be made by ringing Pam Melland on 578 8956 or filling out a form on Community Day at the Caulfield Toddlers Playgroup stall.

PAPERBACK DRIVE

The Red Cross is running short of reading matter for hospital patients.

The Lions Club of Caulfield has offered to help the Red Cross by conducting a paperback collection in the Caulfield area.

If you can assist, please ring Cr. Patience during business hours on 523 8701 or write to him care of the Caulfield Town Hall.

CAULFIELD ARTS CENTRE APPLICATION FORM

Surname
First Name(s)
Address
Age Telephone No. (Priv.) (Bus)

Parent's Declaration

I authorise you in the event of any injury or accident to the above name child(ren) to obtain medical assistance as is required. Our family physician is:

Name of Doctor Phone No.

Signature of Parent

Cheque enclosed for\$

WEEK ONE

A1 ☐ A4 ☐ A7 ☐ A10 ☐
A2 ☐ A5 ☐ A8 ☐ A11 ☐
A3 ☐ A6 ☐ A9 ☐ A12 ☐
A13 ☐

WEEK 2

A14 ☐ A17 ☐ A20 ☐ A23 ☐
A15 ☐ A18 ☐ A21 ☐ A24 ☐
A16 ☐ A19 ☐ A22 ☐ A25 ☐
A26 ☐

FOR OFFICE USE ONLY

DATE AMOUNT PAID RECEIPT NO.

Post this completed application form to: CAULFIELD ARTS CENTRE, 441 Inkerman Road, Caulfield North, 3161.

Applications close: Friday prior to the holiday week. (please read booking information)

CAULFIELD ARTS CENTRE

JANUARY SCHOOL HOLIDAY WORKSHOPS ENQUIRIES: 524 3277, 524 3287.

WEEK ONE — JANUARY 15 — JANUARY 19.

TIME am	CODE	WORKSHOP	COST	AGE
10-11.30	A1	Creative Movement	\$7.50	5-7
11.30-1	A2	Jazz Ballet	\$7.50	8 & over
10-11	A3	Exploring Music	\$5.00	4-5
11-12	A4	Exploring Music	\$5.00	6-9
10-12	A5	Enamelling	\$10.00	8 & over
10-12	A6	Pottery	\$10.00	5-12
10-12	A7	Lino Cuts	\$10.00	10-12
10-12	A8	Photography	\$10.00	9-13
10-12	A9	Chinese Cooking	\$10.00	10 & over
10-12	A10	Multi-Media Arts	\$10.00	5-7
p.m.				
1-3	All	Pottery	\$10.00	5-12
1-3	A12	Leatherwork	\$10.00	11 & over
1-3	A13	Painting & Collage	\$10.00	5-7

WEEK 2 — JANUARY 22 — JANUARY 26

10-11.30	A14	Creative Movement	\$7.50	5-7
11.30-1	A15	Jazz Ballet	\$7.50	8 & over
10-11	A16	Exploring Music	\$5.00	4-5
11-12	A17	Learning Recorder	\$8.00	6-9
10-12	A18	Pottery	\$10.00	5-12
10-12	A19	Fabric Printing	\$10.00	7-12
10-12	A20	Photography	\$10.00	9-13
10-12	A21	Indonesian Cooking	\$10.00	10 & over
10-12	A22	Enamelling	\$10.00	8 & over
10-12	A23	Multi-Media Arts	\$10.00	5-7
p.m.				
1-3	A24	Leatherwork	\$10.00	11 & over
1-3	A25	Pottery	\$10.00	5-12
1-3	A26	Animated Film	\$10.00	9-13

N.B. Classes are on a weekly basis only. All ages are to be adhered to.

Caulfield City Council
Presents

THE BIG BEGINNING



JANUARY HOLIDAY PROGRAM

ENQUIRIES

Arts Centre 524 3277 Community Centre 524 3288

January 15 — January 26

ARTS CENTRE COURSE DESCRIPTION

ANIMATED FILM

An introduction for children to learn how to make animated films — children must bring Kodachrome 40 — Super 8 type A film — no camera needed.

CREATIVE MOVEMENT

A brief introduction for children to express themselves with movement to music, discovering pleasures of dance, improvisation and mime.

ENAMELLING

Introduction to decorative enamelling techniques including jewellery, ash trays, bowls, etc. based on the individual level.

ETHNIC COOKING

A different class of ethnic cooking each week. Learn exciting ways of cooking international foods. Bring an apron. (Classes conducted at the Town Hall).

EXPLORING MUSIC

A group music experience for the young through games, songs, rhythmic, percussion work and other activities.

JAZZ BALLET

The class will create a feeling for movement and dance with latest steps and styles.

FABRIC PRINTING

Includes batik, screen printing and experimental printing eg. tie dye. Fabric supplied. Students welcome to bring along items of clothing to work on if they wish.

LEARNING RECORDER

A course to enable children to learn recorder to reach a point where they can play music pieces. Recorder included.

LEATHERWORK

An introductory course showing the possibilities of working with leather and the making of basic objects. Note: Basic materials will be included for this workshop; however, leather may be purchased for additional or larger projects.

LINO CUTS

An interesting introduction to learning lino cuts. Creating designs on lino and printing.

MULTI-MEDIA ARTS

Children will explore a selection of art media over the week in a course designed to introduce the various age groups to the range of more specified hobby skills featuring creativity with wool, threads and textiles, paper crafts, etc.

PAINTING AND COLLAGE

Working with paper and different mediums to create paintings and collage.

PHOTOGRAPHY

A basic study of photography, including an introduction to developing. Note: Students must bring their own camera loaded with black and white film.

POTTERY

Introduction to clay modelling for the younger set. Firing facilities for selected work available. Note: An extra charge of 30 cents per lb. will be made for firing.

AN IMPORTANT NOTE TO PARENTS.

Lunch time supervision (week 2 only)

The Arts Centre has again added this special service for the January 1979 Holiday Programme for the convenience of those families wishing to participate.

Supervision over the lunch-time hour 12 — 1 p.m. (week 2 only) will be provided so that children wishing to stay at the Arts Centre for afternoon activities may do so.

There is no additional charge for this service. Children are required to bring a packed lunch with them to their workshops. We would ask that parents tick the box indicated on the Program 1 Application Form should they require this service. For further information, ring 524 3277.

more holiday entertainment

Children's Film Festival — January 22-January 26.

Each day: 1 p.m.-3 p.m.

CAULFIELD ARTS CENTRE
441 Inkerman Rd., Caulfield North

1. Monday, January 22nd "HE IS MY BROTHER".
2. Tuesday, January 23rd "SILENT FRIENDS" — Escapades of two German shepherds and a pet duck.
3. Wednesday, January 24th "ADVENTURES OF TOM SAWYER".
4. Thursday, January 25th "XMAS MARTIAN".
5. Friday, January 26th "FOREVER YOUNG FOREVER FREE" — When the chips are down it's good to have a friend.

Admission: 70c Children, \$1.00 Adults.
No Phone Bookings taken.

CAULFIELD COMMUNITY CENTRE PROGRAMME HOLIDAY

Centre Staff — Ron Rutter, Jenny Sartoria, Denise Hodgson. Enquiries — 6 Maple Street, South Caulfield. Phone: 524 3288

Open to children 5 — 14 years.

Two weeks of fun from January 15 — January 26. Monday to Friday inc.; 8.45 a.m. — 4 p.m. daily.

Daily activities at the centre include: basketball, volleyball, treasure hunts, soccer, football, netball, table tennis, new games, earth ball, trampolining and ball games.

Other activities include: puppet making, soft toys, handbuilt pottery, batik, mobiles, cooking for fun, feature films — afternoon, tie-dyeing and creative movement.

Half day trips Monday to Thursday inclusive: Botanical gardens, Luna Park, roller skating, zoo, pet's farm, swimming, Pilgrim Puppet Theatre and ice skating.

Two full day trips — venues to be decided.

Cost: 80¢ per day at the centre; \$2.00 per each half day trip; \$6.00 per full day trip or \$35 for full fortnight's activities, including all half day trips and full day trips. No further costs.

GENERAL INFORMATION

Leadership: The programmes are arranged and conducted by qualified staff. Voluntary leadership is also an essential aspect of holiday activities to ensure adequate supervision and safety.

Venues and Starting Times: Activities will take place in a number of different venues and at various starting times. Please note carefully these details for the programme chosen.

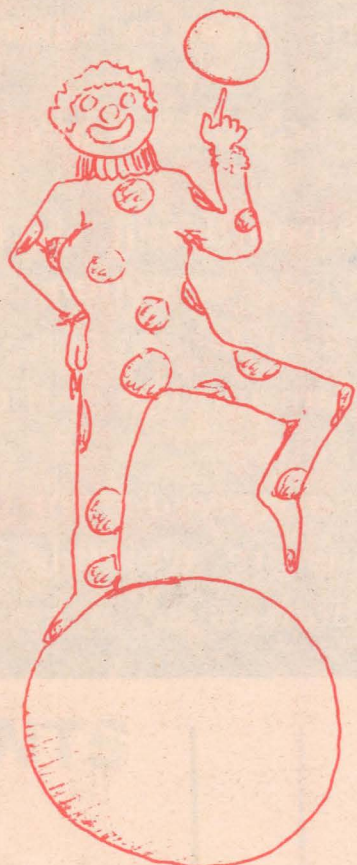
Who May Attend? Any young person aged between 5 and 14 years may attend.

Dress and Behaviour: Dress should be appropriate to the activity undertaken. All those participating are expected to maintain a high standard of behaviour at all times. This applies in particular to day trips. Soft shoes for use in the gymnasium.

Lunches: Lunches are not provided. If a child is booked for both morning and afternoon activities, supervision will be provided during the lunch hours. Extra barbeque lunch on Friday excursions provided. (Community Centre only)

Money: No money will be required for activities. Spending money is the concern of the child.

Cancellations/Transferring of Activities: We are unable to accept any cancellations once an activity is booked. Transfers can only be made at the discretion of staff. Costs, numbers and times are all affected by transfers. These will not be encouraged. The Supervisors of each programme are available to consider any special circumstances.



Caulfield Community Day.

**Sunday December 10
10.00am to 6.00pm
Caulfield Park.**

A FUN-FILLED, FAMILY-BASED, FUN DAY IN THE SUN!

A GIANT FETE (75 artists, 42 local organisations, 25,000 people expected)!

A TRUE COMMUNITY CELEBRATION!

"Caulfield Community Day" is a happening which has occurred for three successive years, each time becoming a larger and more exciting event.

This year will be the best of them all. There will be "Hurricanes" and merry-go-rounds, clowns, pottery, spinning/weaving, Father Christmas with lollies for the kiddies, the Odyssey Big Band, many local groups and organisations, carnival events, gifts, and food to buy, sights to see, and more than there's space to tell.

Take time this minute to mark your calendar:

SUNDAY DECEMBER 10, CAULFIELD PARK.

This is Life. Be in it!

Carols by Candlelight.

The 1978 'Carols by Candlelight' ceremony will be held in Caulfield Park (around the lake in the western section) commencing at 8pm on Sunday, 17th December, 1978.

Please note that this is one week later than the Caulfield Community Day, which is to be held on Sunday December 10 in the "village green" section of Caulfield Park.

This venue proved to be immensely popular last year, with the various choirs seated on a peninsula jutting out into the lake and the crowd of over 2,500 seated around the lake on the opposite shore.

Spectators are urged to bring a blanket or cushions to sit upon and 'flexible' clothing (as it often cools on these early summer evenings). Candles will be available for purchase at a very nominal fee. Copies of the program will be available at no cost.

The Caulfield City Choir and the Caulfield Citizens Band will again be featured, with other groups to appear as well.

Everyone is invited to this beautiful, family-oriented ceremony. Please be early to ensure a good seat.

SPECIAL

VICTORIAN RAILWAYS

The information printed below is taken directly from a submission presented to the Caulfield Council from the Victorian Railways on the Neerim Road and Glenhuntly Road railway intersections. Copies of the complete submission are available from the Town Hall phone 524 3333.

Synopsis

Grade separations from both Neerim Road and Glenhuntly Road at Glenhuntly have been considered by the Abolition of Level Crossings Committee and it was determined by this Committee that these works should be carried out as an integral part of the work associated with the construction of the proposed third track at Glenhuntly as it would not be practicable to provide grade separation by alteration to the level of the rail tracks once this third track came into operation.

As high water table exists in this area, resulting in very adverse ground conditions for construction purposes, various alternative methods for providing the grade separations have been considered including raising the tracks, partial and full lowering of the tracks and elevating of the roadways.

Elevating of the rail tracks is by far the most economical and practical method for providing grade separation and can be carried out completely within the existing railway reserve without any acquisition of or undue interference to private property.

Local objections to the proposal for elevating the rail tracks resulted in the Caulfield City Council indicating that it was not prepared to support the proposal. Without this support by the Council it was considered neither prudent nor proper to proceed with further development of the scheme without further reconsidering the alternative methods of grade separation available.

This report is prepared by the Chief Civil Engineer for the Victorian Railways Board setting out the history of the proposals for the above Grade Separation and the subsequent investigation of practicable alternative types of construction and their ramifications.

Introduction

Prior to the decision in 1974 for commencement of work on construction of a Third Track between Caulfield and Mordialloc to provide for additional trains and express running to meet anticipated 1980 passenger requirements, it had been proposed that boom barrier installations be provided at Neerim and Glenhuntly Roads, Glenhuntly which would have brought about a desirable improvement for flow of road traffic at these locations.

At this time it was apparent that once additional trains were introduced following completion of the third track it would not be possible to subsequently reduce this capacity, even temporarily, to carry out any further major works as would be necessary with grade separation.

Therefore, it became clear that at the time of completion of the third track between Caulfield and Mordialloc, or a significant portion thereof which which would permit operation of a third track, say to Cheltenham, then the provision of grade separation at Neerim and Glenhuntly Roads would have to be completed concurrently.

This was and still is necessary because the work necessitates the provision of temporary tracks and platforms at Glenhuntly and there is only room for a maximum of two tracks during the staging for construction of the grade separation.

Failure to construct the grade separation at the appropriate time will result in one or both of the following:-

- the money spent on the third track will produce no benefit in line capacity until the grade separation is completed.
- any attempt to increase capacity to that of three tracks on two tracks between Caulfield and Glenhuntly by reducing signal headway will cause serious delays to road traffic at Neerim Road and to tram traffic at Glenhuntly Road, particularly during peak periods.
- any grade separation proposed after introduction of a third track between Caulfield and Glenhuntly will necessitate the roadways being taken over or under the existing lines.

Taking these above factors into consideration the Abolition of Level Crossings Committee prepared Report No. 127 in November, 1974 recommending that grade separation works proceed at Neerim and Glenhuntly Road.

How is the problem of the Neerim Road and Glenhuntly Road Railway intersections to be resolved? The final answer rests largely with you — the public.

The Victorian Railways have opted for a grade separation with the rail going over the road in line with State Government Policy.

Independent Consultants, Kinnard/Hill, de Rohan and Young, have assessed the Vic Rail report and concluded that on a cost benefit and noise protection basis there are advantages from an environmental point of view in constructing an at-ground roundabout with boom gates.

In this special supplement, summaries of the Victorian Railways and the Consultants submissions have been presented for your convenience.

Submissions have also been received from Cr. Bill Hordern, Cr. Don Dunstan and Col. J. Needham.

Copies of all five submissions are available from the Caulfield Town Hall for your perusal, phone 524 3333.

Public comment will be sought early in February.

Summary

General

Options

for partial and complete lowering of tracks have been considered as alternatives to raising of tracks and it is clear that the main alternatives for grade separation at Glenhuntly Road and Neerim Road are either to raise the tracks or to lower the tracks the required distance to enable existing road levels at Glenhuntly Road and Neerim Road to remain.

Investigations of alternative proposals for lowering of the tracks at Glenhuntly in lieu of raising the tracks as recommended by the Abolition of Level Crossings Committee have shown that whilst a construction alternative is possible the cost of providing such a proposal is extremely high in monetary terms and cannot be justified on the basis of any benefits from the proposal as these are more than negated during construction due to the serious interference and acquisition of private property which would be necessary.

Raising of Tracks

The cost of raising of the tracks on an embankment is estimated to be \$6,400,000 based on September 1977 rates and work may be carried out in minimum time within the existing railway reserve without any land acquisition or significant interference to private property.

Lowering of Tracks

Any proposals for lowering of the tracks presents considerable technical problems, involves extensive property acquisition and interference to private property which is detrimental to community interest, construction period is much longer and costs are extremely high.

Estimated cost for lowering of the tracks is \$16,550,000 based on September 1977 rates.

Third Track at Grade

As it would be completely improper to consider incurring additional expenditure in the order of \$10,000,000 to provide a grade separation at this location purely on the basis of local objections raised to date, serious consideration must be given to providing the third track at grade should the recommended scheme for raising of the tracks not be accepted.

As previously stated in reports by the Abolition of Level Crossings Committee serious delays would occur to road traffic should the third track come into operation without grade separation.

With the heavy volume of road traffic now using the Neerim Road crossing during many hours of the day a roundabout situation would not function satisfactorily and for safety it would be necessary to install a co-ordinated road traffic light system to operate in conjunction with the boom barrier operation.

Such an installation would further limit the capacity of the crossing and intolerable road traffic conditions could be expected at this crossing. More seriously still any future grade separation, after introduction of the third track, would necessitate the roadways being taken over or under the existing rail lines which would seriously interfere with and eliminate considerable portions of the existing adjacent commercial areas and private residences.

Recommendation

From

the investigations undertaken it is considered that any proposal for lowering of the tracks at Glenhuntly and Neerim Roads to provide a grade separation cannot be justified on the basis of the extremely high costs and substantial property acquisition and interference during construction.

Therefore, it is recommended that the grade separation be implemented by raising of the tracks on an embankment and landscaping treatment of the embankment and surrounding area be carried out to the fullest extent.

Should this recommendation not be acceptable because of reasons previously raised it is recommended that the third track through Glenhuntly be provided at grade which will enable the improvements in service on the Caulfield-Mordialloc section of line to be implemented.

CONSULTANTS VIEW

The information printed below is taken directly from a submission presented to the Caulfield Council by consultants Kinnaird Hill deRohan and Young. It is an independent consultants view of the Victorian Railways' submission.

Although it appears that more space has been given in this supplement to publishing the consultants' view, it must be pointed out that much of what has been printed is directly quoted from the Victorian Railway's submission.

Copies of the consultants complete submission are available from the Town Hall phone 524 3333.

Introduction

This report is the latest step in an extended process of achieving a solution to long standing traffic management problems at Neerim and Glenhuntly Road railway crossings.

The investigations and studies have climaxed at this time because the construction of the third railway track between Caulfield and Glenhuntly is imminent and a final decision on whether the grade separation should also be constructed is needed.

The following schemes have been suggested as means of improving the existing railway crossing at Neerim and Glenhuntly Roads.

1. Maintain existing at grade level crossings — but replace hand operated gates with (automatic) boom barriers at Neerim Road incorporate a roundabout as a means of increasing the crossing/intersection capacity.

2. Elevate the railway line and maintain Neerim and Glenhuntly Roads at existing grade.

3. Elevate road maintaining railway line at existing grade:
● elevate both Neerim and Glenhuntly Roads, or
● elevate Neerim Road only.

4. Depress railway line maintaining roads at existing grade.

5. Partial depression of the railway line and partial elevation of road:

● lower the rail tracks by 3.6m and elevate the roadway by about 3.2m for grade separation at both Neerim and Glenhuntly Roads

● lower the rail tracks by 1.8m and raise the road by 5.0m to grade separate the Neerim Road crossing only.

In this report we have confined our attention to schemes 1, 2 and 4 because we are satisfied that the following reasons justify the exclusion of schemes 3 and 5 from further examination:

● "very long approach ramps for the road overpasses would result in difficulties in providing access to private dwellings and commercial development adjacent to these ramps. This access could only be achieved by extensive acquisition of privately owned dwellings and commercial properties, and this was regarded as being detrimental to community interests."

● the elevation of Neerim Road would require the intersection at Neerim Road to be sited on the crest of the approach ramps which would lean to a substandard design and severely restrict the safe operation capacity of the intersection.

● the alteration to the level of both the railway line and the road would require the closure of Neerim Road for extended periods during construction.

● the cost of scheme 5 would be higher than for schemes 1 and 2.
● that few other qualitative gains/benefits could be ascribed to the schemes eg. there would be significant visual intrusion and more residences would be affected by road traffic noise intrusion, air quality may not be improved because the introduction of a grade would offset the gain of reduced vehicle idling at the level crossing etc.

The report has three part structure viz:

● Part A, which concentrates on a review of the Victorian Railways Board Report and thereby on the engineering aspects of the various grade separation proposals.

● Part B which examines the possible environmental impacts should any of the three main proposals be implemented.

● The Appendices in which more detailed information is contained.

The study brief outlined a problem with many highly interactive variables and requires the involvement of many persons practising in a wide range of disciplines viz:- town planner, architect, environmentalist, economist, noise specialist and engineers — structural, highway, railway, geotechnical, construction.

The cooperation and assistance given to study team members by persons within the Council, the Victorian Railways and Country Roads Board, and the Environmental Protection Authority is gratefully acknowledged.

Summary

The Consultants have examined the main engineering issues of each proposal. The issues discussed together with an indication of the major implications are summarised below:

ENGINEERING ISSUE MAJOR IMPLICATIONS

Geotechnical

The level of ground water and rate of free flow strongly influences the ease and cost of constructing the depressed railway scheme. Soil strength properties will influence cost of earth retaining constructions and determine safe embankment side slopes.

Railway Engineering

Limiting railway geometry criteria determine extent — length and width of works. The length and cost of grade separation works would be increased substantially if railway station was reconstructed south of Glenhuntly Road.

Road Engineering

A road under/overpass would be a lesser cost solution but would eliminate or restrict access to residential and commercial properties and lead to a substandard intersection at Neerim Road.

At Neerim Road boom barriers with a roundabout would increase the present capacity of the at-grade railway crossing/road intersection at a small cost.

Structures

Several structural systems would be used to achieve a minimum project cost for either grade separation proposal. For the elevated railway proposal the use of several different earth retaining systems would lead to a lesser aesthetic result.

The type of structural system used would be selected following consideration of the feasibility of methods of construction.

Construction

Construction of the grade separation proposals would be severely constrained by the objective of maintaining existing level of service. Construction in stages over a long period (particularly for the depressed railway proposal) and sometimes for 24 hours a day and on weekends would lead to cost penalties.

The elevated railway scheme would allow all work to be limited to the railway easement with only temporary street closures.

The depressed railway scheme would require the use of sophisticated construction techniques and lead to acquisition of commercial and residential properties and would have major implications for services.

Costs

Scheme total costs are affected by the quantities of materials and labour, plant and equipment consumed and by the required entrepreneurial reward — higher for difficult constructions and lower for 'straight forward' constructions.

As one of the main intentions of the study was to appraise the Victorian Railways Report the Consultants have below identified statements which might beg a question from the layman or be essentially a statement of opinion for one reason or another unsubstantiated and possibly on which another professional of similar experience might have a different opinion.

Given the objectives of the report it needs to be said that the Victorian Railways have very highly developed the engineering planning for the two main grade separation proposals namely the depressed railway and the elevated railway solutions, and the comments offered below would not have been possible without the ready access to VicRail's project planning documentation and the discussions held with VicRail's senior design branch personnel.

VIC. RAIL REPORT REFERENCE (in heavy type) CONSULTANTS' COMMENTS (following)

1. "... it had been proposed that boom barrier installations be provided at Neerim and Glenhuntly Road, Glenhuntly which would have brought about a desirable improvement for flow of road traffic at these locations"

This comment should be kept in mind. We have determined in Section 12 that the present traffic capacities of the crossings would be improved by these measures.

2. Reason why it is necessary to construct a grade separation involving elevation or depression of railway at the same time as constructing the third line.

We agree with the arguments advanced here. Construction of the grade separation would require additional space for temporary relocations of the track.

Once the third line is constructed this space would not be available unless the existing level of rail passenger service was severely curtailed.

3. "The money spent on the third track will produce no benefits in line capacity until the grade separation is completed"

This statement might be interpreted as meaning that no benefit would be available from the third track without the grade separation.

This is not so as from a railway operational point of view an at grade improvement would probably achieve the same benefits as the grade separation.

4. "Any grade separation proposed after introduction of a third track between Caulfield and Glenhuntly will necessitate the roadways being taken over under the existing lines"

We agree that this would be the most manageable but probably still unsatisfactory option.

5. CONSTRUCTION ALTERNATIVES

We believe that all serious options have been canvassed.

6. "The principle has generally been adopted that the construction and operation of important rail tracks in areas where serious problems of ground water exist should only be undertaken where no suitable alternative is available and the high cost involved can be justified."

We agree. The statement acknowledges the need to execute a project cost-benefit evaluation.

7. "Partial lowering of Rail Tracks" and following arguments against schemes requiring elevation of roads.

We concur. Construction of road approach ramps would severely restrict access to a large number of properties.

8. "This scheme provided the best treatment for road traffic with all roads remaining at surface level and the Neerim Road crossing could remain during currency of the construction period with a minimum of disruption to traffic."

We agree.

9. ADVANTAGES OF RAIL OVER ROAD PROPOSAL.

"or undue interference to private property"

We generally agree with the arguments used. However a value judgement is evident here.

Yes, more likely to be the case than if the depressed rail proposal was constructed.

10. "It was considered to be very doubtful if the overall noise level would be significantly different as a result of the proposed construction."

Section 10 of this report looks more closely at the likely noise impacts.

11. "there are serious drainage and construction problems as well as considerable interference to and acquisition of private property associated with lowering of the tracks to the full depth to provide grade separation."

We generally agree. These issues are examined in Part B of this report.

12. ON THE CUT SLOPES METHOD OF CONSTRUCTING THE DEPRESSED RAILWAY SCHEME.

"For temporary tracks not being permitted less than nine metres from the top of cut, it is not possible to carry out the construction without going outside the existing railway reserve"

Given more comprehensive soil testing which allowed improved strength characteristics to be used, the temporary tracks might be located closer to the edge of the cut. However it would be unlikely that encroachment on space beyond the railway reserve could be avoided.

"closure of Station Place would be necessary during construction of the first stage — lasting approximately two years"

The estimate of 2 years closure seems excessive. We believe that careful programming could reduce the closure to six months.

13. DIAPHRAM WALLS.

"Other alternatives such as slurry walls are not considered to be a practicable alternative as:

● this type of wall is mainly suitable for cut off walls located back some distance from the proposed structures or for sides of trenches where the structural stability of the wall can be readily obtained by strutting as excavations progress.

Slurry walls can be used economically as an element which can be incorporated in the final structure. However the ability to strut may allow greater cost savings.

● construction is very expensive, slow and requires specialised equipment and techniques which are unnecessary as ground can be supported more cheaply by other means.

Our investigation has indicated this to be correct for this particular case.

● an adequate structural retaining wall to the height required at Glenhuntly cannot be provided by this method.

We disagree.

● dewatering of the area to be excavated would still be necessary as it is not practicable to provide a wall to the depth required to prevent water rising in the excavations."

Vertical walls to a depth of 14 metres would considerably reduce the amount of water flowing into the excavations.

We agree that it would be beneficial to relieve water pressure from behind the walls.

next page please

neerim road & glenhuntly road railway intersections

from page 9

14. CONSTRUCTION FOR LOWERING OF TRACKS. CONTROL OF GROUND WATER.

"the estimated flows which are expected to be in the order of 70,000 litres per hour"

This flow rate is not extremely high. It could prove to be much lower. The figure given is for the whole of the excavation being dewatered simultaneously.

"The pump wells used during the construction stages to draw down the water table are suitable solely on a short term basis. They have a short life, are very costly to operate and maintain and are not completely reliable."

It is agreed that steps must be taken to prevent water, either ground or stormwater, from causing instability in the soil at the base of the excavation. A concrete slab of a type depending on the construction form of the walls would appear necessary.

"Therefore, the only acceptable structure for the underpass must be one which has sealed walls and floor, i.e. must be designed to withstand the hydrostatic pressure."

"Drainage of the runoff water from the underpass structure and any leaks through the walls or floor must be adequately provided for."

We agree.

"The only satisfactory solution for provision of such drainage is to construct a gravity outfall drain which can be provided to discharge into the Melbourne and Metropolitan Board of Works Grange Road main drain No. 4951 located south of Dorothy Avenue, a distance of approximately 900 metres from Glenhuntly Road."

"Pumping off rainfall runoff drainage from the underpass should not be contemplated because of the unreliability of mechanical and electrical plant and the serious and unacceptable consequences should a failure occur and flooding result."

A permanent dewatering system relying on electrical/mechanical pumps would not be desirable, but a dewatering system consisting of filter layers behind the walls and under the floor with collecting pipes discharging by gravity to the M.M.B.W. Grange Road Main Drain may be possible.

This could reduce the uplift forces and wall pressures thus permitting a cheaper structure.

15. CONSTRUCTION FOR LOWERING OF TRACKS.

LOCATION

"There is insufficient width in the existing reserve at this location to permit the new station to be constructed on the same site as well as providing for the temporary works."

We agree.

16. TYPE OF CONSTRUCTION.

"With the very high level of groundwater and the large catchment involved, the ground supporting structure required for the lowering of tracks by up to approximately 7 metres must be designed to overcome the following problems:

The VicRail requirement of an impervious structure in any cut that penetrates subartesian layers is sound practice, but in this instance it appears possible that the groundwater encountered in the investigations is 'perched' water above the clayey sand horizons and not subartesian water.

- large side forces in the walls as a result of hydrostatic pressures.
- large uplift forces on the floor which will tend to float the structure.

A concrete thickness of approximately 2m would be required to prevent flotation without ground anchors or dewatering if the water table is in fact 6m above the bottom of the base.

- drainage of both runoff water and any leakage through walls or floor.

This required a waterproof structure with vertical walls running both sides for the full length of the project with a substantial concrete floor on which the track structure would be laid.

However, it is possible that the groundwater encountered at 1.35m is only perched water and that the static water level is lower. If this is the case then a much lighter concrete structure would be adequate.

The structure would be of the 'U' form varying in height and width due to the vertical and horizontal alignment of the three tracks. This type of construction is considered to be the only practical solution to provide a satisfactory structure on which the tracks may be carried with safety.

17. RAISING OF TRACKS.

"the revised estimate for the proposal for raising of tracks is \$6,400.00" (Sept. 1977 values).

Our estimate for the cost of this construction is \$10.1 million October 1978 values. Refer to Section 9 of this report.

LOWERING OF TRACKS

Extensive acquisition incurring high costs and inconvenience to private individuals is necessary and because of the nature of such an engineering exercise the construction period would be expected to be twice as long as for an overpass resulting in a very expensive grade separation project.

We generally agree. The estimate of "twice as long" is a result of being constrained to a constant monthly rate of expenditure and the fact that the depressed rail proposal could be twice the cost of the elevated rail scheme.

"is estimated to cost \$16,550,000" (based on Sept. 1977 rates).

We have estimated \$16.4 million for the minimum cost construction proposal.

18. SUMMARY

Investigations of alternative proposals for lowering of the tracks at Glenhuntly in lieu of raising the tracks as recommended by the Abolition of Level Crossings Committee have shown that whilst a construction alternative is possible the cost of providing such a proposal is extremely high in monetary terms and cannot be justified on the basis of any benefits from the proposal as these are more than negated during construction due to the serious interference and acquisition of private property which would be necessary.

The cost of the depressed railway proposal is 'extremely high' and is not justifiable on the basis benefits derived.

The VicRail report does not attempt to quantify the benefits.

THIRD TRACK AT-GRADE

"As it would be completely improper to consider incurring additional expenditure in the order of \$10,000,000 to provide a grade separation at this location purely on the basis of local objections raised to date, serious consideration must be given to providing the third track at grade should the recommended scheme for raising of the tracks not be accepted."

We believe that the decision should be based on a cost benefit analysis together with an examination of the importance of any level-of-service qualitative argument favouring an action which cannot be justified on a dollar basis.

"As previously stated in reports by the Abolition of Level Crossings Committee serious delays would occur to road traffic should the third track come into operation without grade separation."

The introduction of traffic control measures such as boom barriers and a roundabout is estimated to retain present road capacities.

"With the heavy volume of road traffic now using the Neerim Road crossing during many hours of the day a roundabout situation would not function satisfactorily and for safety it would be necessary to install a co-ordinated road traffic light system to operate in conjunction with the boom barrier operation."

This is not supported by capacity calculations for a roundabout with boom barriers or by discussions with the Traffic Engineering Division of the Country Roads Board.

"Such an installation would further limit the capacity of the crossing and intolerable road traffic conditions could be expected at this crossing."

A roundabout has the capacity to handle present volumes even allowing for full utilisation of the third line at peak hour. Traffic lights would not be needed for safety purposes.

"More seriously still any future grade separation, after introduction of the third track, would necessitate the roadways being taken over or under the existing rail lines which would seriously interfere with and eliminate considerable portions of the existing adjacent commercial areas and private residences."

We agree that construction of a grade separation following the installation of the third track at grade would have serious impacts upon commercial and residential properties.

The table below summarises the major impacts associated with the feasible alternatives after the installation of the third track. A comparison is made with the present conditions (with two tracks) for the impacts, namely noise, visual traffic, economic, air quality and land use impacts.

In terms of noise, the elevated rail alternative increases the degree of noise intrusion compared to present conditions; it increases the distance that a peak of 70 dB(A) can be heard due to train movements from about 90m to about 170m from the railway line, and increases the number of residents who are likely to be very much annoyed by train noise.

The depressed rail alternative reduces the degree of noise intrusion; it confines the 80 dB(A) peak to within 50m of the track and reduces the number of residents likely to be annoyed by train noise. The at-grade alternative with boom barriers has a similar degree of noise intrusion to present conditions.

The existing railway line forms a major visual feature in the area which would be retained with the at-grade alternative.

The implementation of the elevated rail alternative would increase the visual dominance of the railway line by providing at least a partial visual barrier for approximately 1.3 km, and cause shadow on some residential and commercial properties.

The depressed rail alternative would reduce the visual impact of railway elements.

Both grade separation alternatives eliminate the delay to train movements while the at-grade alternative only produces a 40% reduction in delay. The Neerim Road crossing is presently at capacity during peak hour.

With the third rail in place (and assuming no timetable improvements) a 2% reduction in capacity would occur with the at-grade solution. A 63% increase in capacity is possible with the grade separation alternatives.

However this may not be fully realised because of capacity limitations at adjacent intersections. The provision of either grade separation alternative would eliminate an important barrier to the creation of an east-west arterial road through Caulfield.

This barrier would remain with the at-grade alternative. The depressed rail alternative would cause significant traffic disruption during construction while the elevated rail alternative only minor disruption and the at-grade alternative very minor disruption.

For both grade separation alternatives the estimated costs exceed the estimated benefits.

The ratio of benefits to costs (excluding third rail costs) is .23 for the elevated rail alternative and .14 for the depressed rail alternative. On the other hand, a benefit/cost ratio of 1.5 is estimated for the at-grade alternative.

Air quality impacts are considered very minor and are not considered to provide a basis for differentiating between alternatives.

In terms of land use impacts the depressed rail alternative has the greatest impact by encroaching on seven private properties.

The elevated rail alternative can be confined to railway property but involves the demolition of a retail business operating on railway property. The at-grade alternative may involve the demolition of the same retail business.

to page 13

ALTERNATIVES	NOISE IMPACTS	VISUAL IMPACTS	TRAFFIC IMPACTS	ECONOMIC IMPACTS	AIR QUALITY	LAND USE
Present Conditions	Noise level of 70 dB (A) heard up to 90m from track 390 residents 'annoyed a little' 50 residents 'very much annoyed'	Railway line forms a major visual feature with only some sections pleasantly landscaped	34,000 vehicle-hours per annum delay due to train movements Neerim Road crossing at a capacity during peak hour Level crossings form a barrier to forming an east-west arterial road		Ozone levels in Caulfield area exceed desirable standards Carbon monoxide nitrogen dioxides and particulates are within desirable standards	
Elevated Rail	Noise level of 70 dB(A) heard up to 170m from track 580 residents 'annoyed a little' 70 residents 'very much annoyed'	Visual intrusion and partial barrier created for approximately 1.3km Would be landscaped Shadows created on some residential and commercial properties	Elimination of all delay due to train movements 63% increase in peak hour capacity at Neerim Road crossing Potential for creating an east-west arterial road Minor traffic disruption during construction	Cost of construction (excluding third rail costs) \$9.1 million Benefits from grade separation \$2.1 million	Slight reduction in precursors to ozone formation from delay reduction Minor increase in precursors to ozone formation from increased traffic Greater dispersion of train generated particulates	Retail business operating on railway property, south side of Glenhuntly Road to be demolished No encroachment on private property
Depressed Rail	Noise level of 70 dB(A) heard up to 50m from track 240 residents 'annoyed a little' 30 residents 'very much annoyed'	Reduction in visual impact of railway elements	Elimination of all delay due to train movements 63% increase in peak hour capacity at Neerim Road crossing Potential for creating an east-west arterial road Significant traffic disruption during construction	Cost of construction (excluding third rail costs) \$15.6 million Benefits from grade separation \$2.1 million	Slight reduction in precursors to ozone formation from delay reduction Minor increase in precursors to ozone formation from increased traffic	Retail Business operating on railway property, south side of Glenhuntly Road to be demolished Encroachment on 7 private properties
At Grade with Boom Barriers	Noise Level of 70 dB(a) heard up to 90m from track 350 residents 'annoyed a little' 50 residents 'very much annoyed'	Minor changes only in visual appearance	20,800 vehicle-hours per annum delay due to train movements 2% reduction in peak hour capacity at Neerim Road crossing Barrier to forming an east-west arterial remains Very minor traffic disruption during construction	Cost of construction (excluding third rail costs) \$670,000 Benefits from boom barriers \$997,000	Negligible Change	Possible demolition of retail business on railway property south side of Glenhuntly road



Out and About over the holidays.

It's likely to be a long hot summer and it's easy to get bored. Recreation Officer, Max Binnington has put together a list of things you might like to do during the holidays.

Where possible the Melways street reference is listed together with costs. Why not keep this page and use it over Christmas. Happy Holidaying!

Holiday Programs

1. "The Big BEGINNING" —

Caulfield City Council Holiday Program.

Date: January 15-26 1979. Monday-Friday.

Venues: 1.1 **Community Centre**, 6 Maple Street, South Caulfield. Melway Reference: Map 68 (A.5) Tram 64.

Daily or weekly activities ranging from simple arts and crafts, sporting (including swimming), cooking, films, and many others. For children from 5-12 years. Contact: Community Centre — Ron, Jenny or Denise, telephone 524 3288, 524 3298.

1.2 **Arts Centre**, 441 Inkerman Road, North Caulfield. Melway Reference: Map 58 (G.11).

Structured programs ranging from music, through pottery, creative movement and many others. Weekly activities varying in cost for children from 5-14 years. Bus 602 Hotham Street, 601 Orrong Road. Contact: Arts Centre — Jackie, Vivian, Sharon, telephone 524 3287, 524 3277.

2. Uniting Church Hall.

Cnr. Neerim and Toolambool Roads, Carnegie. Melway Reference: Map 68 (H.4) Chadstone Bus 623, 625.

For children 5-10 years. Outdoor and indoor games, play activities, Christmas carols and a film about Christmas. 9 a.m.-4 p.m., Wed., Thurs. and Frid., December 20-22. Enquiries Mrs. Coral Stolz — 211 0323 or Rev. Robin Denholm — 211 3063.

3. For programs in the Oakleigh area contact Peter McCarthy — 543 3446, Malvern contact Patsy O'Dowd — 200 1209, Brighton contact Rick Thompson — 92 8688, Prahran contact Geoff Hyde — 51 9161.

4. Caulfield Memorial Swimming Pool.

Munro Street, Koornang Park; Hours: 9 a.m.-6 p.m. (9 p.m. hot nights). Manager: Bill Crossley, 524 3281. Cost: Adults 50¢, Children under 15, 20¢.



Picture Theatres

Hoyts:

Local — Hoyts: 1. Cnr. of Dandenong and Glenferrie Roads, Malvern. Melway Ref. Map 59 (B.10) Tram 69. From Dec. 14, 1978 "Stars Wars" — matinees and nights; from Dec. 21, 1978 "magic of Lassie" — weekday mornings only. From January 4, 1979 "Revenge of the Pink Panther" — matinees; for prices and bookings phone Hoyts on 509 3193.

2. Classic:

7 Gordon Street, Elsternwick. Melway Ref: Map 67 (F.3) Bus 602, 601. Tram 67. Train: Sandringham line-Elsternwick Station. Phone for bookings and information 523 9739.

3. Metro Malvern:

243 Glenferrie Road, Melway Ref: Map 59 (B.9) Tram 69. Phone for information and bookings 509 0555.

City:

Check your morning newspaper for special programs being held during the school holidays.

Bowling:

Catch the bus to "Chaddie" Shopping Centre and try your skill against the kids or do your shopping while they bowl.

Health Centres:

Check the Yellow Pages and give them a ring. Some offer family discounts and have prices for occasional visits. Most have a wide range of activities.

TRANSPORT INFORMATION CENTRE. PHONE 653 3611 FOR METROPOLITAN INFORMATION.

Places of Interest

1. National Gallery:

180 St. Kilda Road, Melbourne. Catch any City tram or bus and watch out for the crazy fence. Melway Ref Map 43 (J.10).

2. Local Library:

Caulfield's are in: (i) **Staniland Grove, Elsternwick** — off Glenhuntly Road. Tram 67, Bus 601, 602, train — Elsternwick Station. Melway Ref: Map 67 (G.3) phone 523 6682 (ii) **Maple Street, South Caulfield, off Hawthorn Road**, Tram 64, Melway Ref: Map 68 (A.5) phone 528 6301; (iii) **Truganini Road, Carnegie, off Neerim Road**. Bus 623, 625. Phone 211 8280 melway Ref: Map 68 (H.4).



3. Museum:

Catch train, bus or tram to the City. The Museum is at the top of Swanston Street (near R.M.I.T.). Phone 564 3628. They often have free film sessions. Melway Ref: Map 1 (m.7).

4. Historic Places.

4.1 **Ripponlea** — 192 Hotham Street, Elsternwick. Open 10-5 p.m. daily. Visit its magnificent gardens and delightful period home. Bus 602, Melway Ref: Map 67 (F.2).

4.2 **Como House** — Como Avenue, South Yarra (near corner of Toorak and Orrong Roads). A magnificent old home. Melway Ref: Map 58 (G.2). Open 10-5 p.m. daily. Phone 24 2500.

4.3 **H.M.A.S. Castlemaine** — Gem Pier, Williamstown. October-January 10-6 p.m. Adults 60¢, Children 40¢. Melway Ref: Map 56 (E.9).

4.4 **Polly Woodside** — Orr's Dry Dock, cnr. Phayer and Normanby Roads, Melbourne. (near Spencer St. Bridge on the South Melbourne side). Phone 699 9760, Melway Ref: Map 43 (F.11).

4.5 **La Trobe's Cottage** — The Domain, South Yarra. 10.30-5 p.m. Phone 63 5528, Melway Ref: Map 58 (A.1).

4.6 **Captain Cook's Cottage** — Fitzroy Gardens, Wellington Parade, East Melbourne. Melway Ref: Map 44 (A.8).

5. The Botanical Gardens

— A good example of Melbourne's fantastic gardens. Maybe follow this with a jog around "The Tan", a cycle along the Yarra Bike Path and/or barbeque on the banks of the Yarra River.

From Caulfield catch a tram or bus to the City, get off at Princes Bridge, walk down along the river bank past the boat sheds to the Hoddle Street Bridge entrance. Melway Ref: Map 44 (B.12).

6. Beach Trip.

6.1 Catch a train on the Frankston line (Caulfield, Glenhuntly, Ormond Stations) and try any of the beaches from Mordialloc to Frankston — they're all close to the stations and safe for the kids.

6.2 Catch a St. Kilda tram No. 69 in Balacava Road and try the beach at St Kilda.

7. Churchill National Park

Visit near the corner of Wellington and Stud Roads, Rowville. Melway Ref: Map 82 (B.8). Take the train to Dandenong then bus 665 or 666 to Waverley Golf Course. Follow this with a pleasant 1 km walk through the golf course and you're there.

Parks and Playgrounds

In the City of Caulfield: There are numerous neighbourhood parks in the City which offer as many alternatives as your imagination eg. build a kite with the kids and learn how to fly.

Throw a frisbee, kick a football. See your local Recreation Officer for the Youth, Sport and Recreation booklet — "50 ways to be in it". Ring City of Caulfield Recreation Officer Max Binnington on 524 3333 or "Life Be In It", telephone 602 1566.

Where to find the nearest park/playground. Group 1 with barbeque facilities (electric, coin in the slot).

1.1 **Caulfield Park**, Balacava Road, Caulfield, Melways Ref: Map 59 (D.12). Tram No. 3.

1.2 **Glenhuntly Park**, Neerim Road, Glenhuntly. Melways Ref: Map 68, (E.4). Bus No. 623.

1.3 **Harleston Park**, Seymour Road/Allison Road, Elsternwick. Melways Ref: Map 67 (H.2). Bus Orrong Rd., or Kooyong Rd. Buses 601 or 605 stop at Seymour or Allison Rds. (opp. Caulfield Hospital).

1.4 **Murrumbeena Park**, Kangaroo Road, Murrumbeena, Melway Ref: Map 69 (B.6). Bus 627 from Elsternwick Station.

Group 2 playgrounds and/or sporting reserves only.

2.1 **E. E. Gunn (Ormond) Park**, Cnr., Foch and Malane Sts. (playground) Bus 627. Melways Ref: Map 68 (E.7).

2.2 **Greenmeadows Gardens** Cnr. Greenmeadows Lane and Milburn Grove (playground), North Caulfield/East St. Kilda Melway Ref: Map 58 (G.12). Bus 601 Orrong Road. Walk down Milburn Grove.

2.3 **Hopetoun Gardens**, Cnr Victoria Street/Glenhuntly Road, Elsternwick. (playground). Tram 67. Melway Ref: Map 67 (H.4).

2.4 **Koornang Park**, Koornang Road, Carnegie. (playground/sporting reserve). Melway Ref: Map 68 (H.6). Bus 620, 627, Koornang Road/Coorigil Road corner.

2.5 **Lord Park**, Munro Grove, Caulfield (sporting reserve) (as for Koornang Park). Melway Ref: Map 68 (G.6).

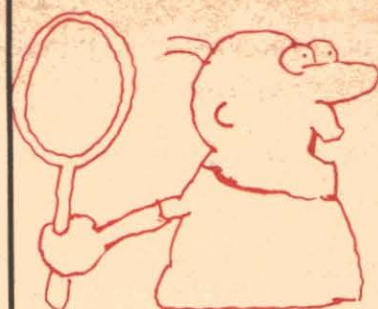
2.6 **Packer Park**, Leila Road, Carnegie (playground/sporting reserve) Bus 620, 627, walk down Leila Road. Melway Ref: Map 68 (J.8).

2.7 **Princes Park**, Hawthorn Road, South Caulfield. (playground/sporting reserve). Tram 64. Melway Ref: Map 68 (A.6).

2.8 **Garden Avenue Park**, Glenhuntly. Melway Ref: Map 68 (F.6) (playground only) Tram 67. Train to Glenhuntly Station.

2.9 **Duncan MacKinnon Park**, Murrumbeena and North Roads, Murrumbeena. (playground/sporting reserve). Melway Ref: Map 68 (K.9).

2.10 **East Caulfield Park**, Cnr. Railway Parade and Dandenong Road, East Caulfield. (playground/sporting reserve). Melway Ref: Map 68 (G.2). Bus 620. Train to Caulfield Station.



Group 3 Parks — no playgrounds or sporting reserves.

3.1 **Riley Park**, Neerim Road, Murrumbeena. Melway Ref: Map 69, (B.5).

3.2 **Springthorpe Gardens**, Neerim Road, Murrumbeena. Melway Ref: Map 69 (B.5).

3.3 Don't forget the outer circle railway strip of land travelling north from Hughesdale Station to Dandenong Road — we don't even mind if you follow it over Dandy Road and into Oakleigh.

What else? Don't let your imagination stop there.

Caulfield Racecourse is open to public use at all times except during race days. Look out for horses training if you arrive before 9 a.m.

How close is your nearest school oval?

Read "The Age Weekender" for a few ideas. Kick a ball with the kids or throw a frisbee, play frisbee golf, throw it long distance or at a target.

Feed the gulls at the beach, or the ducks at Caulfield Park — a great way to get rid of your stale bread.

A hot day?

Squirt the kids with a hose, it's great for the lawn too. Dad can make some stilts out of wood or old cans and teach the kids a trick or two.

How's your tennis — maybe you don't want to play a match but you can practise on the rebound walls at Caulfield Park, Packer Park and Rosanna Reserve. The rest is up to you and the kids.

Street entertainment for local shoppers

Continued from Page 10

★★ Special ★★

CONCLUSION

Neither grade separation scheme elevating or depressing the railway line can be justified on economic grounds. The cost of constructing a grade separation by elevating the railway line is estimated to be \$9.1 million (excluding the cost of landscaping and third rail costs).

The estimated cost of constructing the grade separation by depressing the railway is \$15.6 million (excluding the cost of the third rail). The present value of benefits which might accrue from the grade separation has been estimated at \$2.1 million.

If both the existing hand operated gates at Neerim Road and the mechanically operated gates at Glenhuntly Road were replaced by automatic boom barriers and in addition a roundabout was introduced at the Neerim Road crossing, the cost would be about \$0.67 million (excluding costs associated with third rail).

The present value of future benefits which might arise from these measures would be about \$1.0 million and thus exceed the cost. The retention of the railway line at its present grade would also avoid the adverse visual and noise impacts of the elevated railway proposal.

Although the depressed rail alternative results in a reduction in noise intrusion, this is only obtained at a substantial cost penalty.

A grade separation could be justified if the social benefits of increased road capacity and improved east-west accessibility were considered to exceed both the economic and social disbenefits of (noise and visual intrusion).

However the assessment of the importance of the various social benefits/disbenefits is beyond the scope of this report and is a matter for the consideration of the Council and residents.

It should be noted that present Government policy is to eliminate at-grade crossings. To implement this policy a Transport Fund with \$3 to \$3½ million per annum to fund such projects as road-rail grade separations has been established.

The Government is committed to improving safety and reducing congestion where the warrant exists.

Shoppers in Koornang Road, Carnegie were treated to a demonstration of 'disco dancing' on Friday evening December 1. The dancers were accompanied by music from the Rock Group 'Raggs'.

The entertainment was organised by the Carnegie Chamber of Commerce as pre-Christmas entertainment for Friday night shoppers — and there is more to come.

The roads will once again be closed to traffic in the vicinity of the Koornang Road/Jersey Parade intersection from 7 p.m. this Friday, December 8, when the St Andrew's Ladies' Scottish Pipe Band will provide entertainment and also on Friday, December 15 when the Caulfield City Band will play for shoppers.

CAULFIELD TECHNICAL SCHOOL

100 Queens Avenue, Caulfield East, 3145.
EVENING CLASSES 1979

Subject to sufficient enrolments, classes will be conducted in the following:- Preparatory — typing and shorthand; hobbies — art metal, woodwork.

SECONDARY DAY CLASSES 1979

Vacancies exist in years 7 to 11, boys only. Applied Science, Business Studies and Technician's Courses are available in Year 10 and 11.

Telephone 211 5766 for further information on all classes.

Rippon Lea

Rippon Lea is the ideal place to visit and bring your visitors during the school holidays.

The beautiful gardens are unique and cover 14 acres. In the ornamental lake many varieties of ducks swim and peacocks display on the lovely lawns.

You may picnic under the century old trees or during January, enjoy our quite renowned Devonshire tea in the tearoom, which will be open daily.

Prom Concerts will be held in the Rippon Lea Ballroom on Sundays, December 10 and 17 — the theme will be "Christmas through the ages". These performances are held by the Early Music Consort of Melbourne who are also conducting a Brass Rubbing Centre in the Rippon Lea basement area.

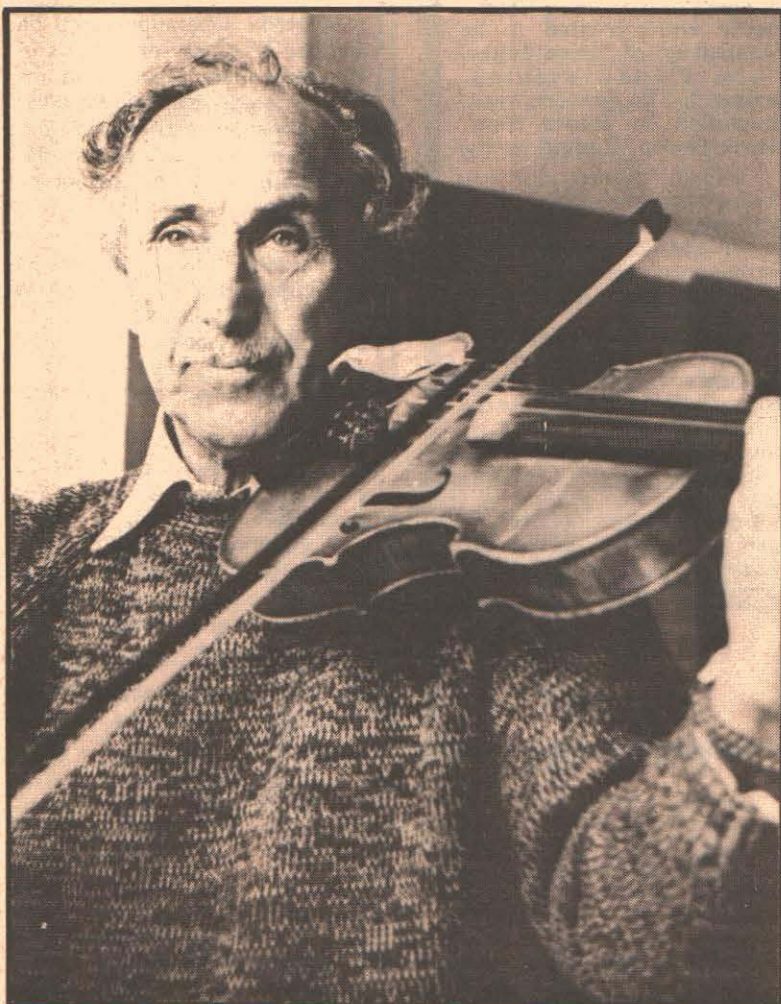
There is a varied collection of brasses and the cost includes instruction and material.

The usual entrance charge to the estate applies and the brass rubbings are a separate cost. For further information phone Rippon Lea on 523 9150.

DINING OUT!



● Diners enjoying a meal at the centre



● Violinist Harry Hurst entertains diners.

The dining centre, which is conducted at the MacDonald Hall, St Giles' Uniting Church, 115 Murrumbena Road is proving to be popular.

A two course meal is served on the first and third Fridays each month at noon. Varied social activities follow, together with afternoon tea. The day's activities finish around 3.30 p.m.

The meals will commence again on Friday, February 2,

1979 and a warm welcome will be extended to all senior citizens or lonely folk in Caulfield who might wish to attend.

For further information, please contact Mais Johnston on 56 2896.

Community Sharing and Caring

A group of persons from wide backgrounds in the Elsternwick area have formed a group whose basic object is sharing skills in the arts/crafts area in an effort to create an atmosphere of caring.

They feel that there are probably many persons who are lonely, who have little contact with others, who have skills/knowledge/ability to share, and who would be interested in increased contact.

The group is looking for a venue. As the size of the group is unknown and virtually unlimited, it seems that what is required is a reasonably large

facility (church hall or similar). Rent is a problem, as the group has no funds. However, it will have considerable income-producing potential once under way.

If you can offer or suggest a venue in the Elsternwick area, and/or if you wish to learn more about this group, please ring Mrs Isobel Hood on 527 3956. She and the others would be pleased to hear from you.

Pre-Christmas Children's Program

A three-day program of activities is planned for children aged from five to ten in the Glenhuntly/Carnegie area for the days between state school break-up and the Christmas weekend — Wednesday 20th, Thursday 21st and Friday 22nd December.

The program is being organised by the Glenhuntly Uniting Parish for any parents who may need such a service.

The venue will be the Neerim Road Church Hall (corner Toolambool Road). The program will run from 9 a.m. to 4 p.m. but children will, if necessary, be cared for from 8 a.m. to 5 p.m.

Activities include outdoor and indoor games, play activities, Christmas Carols and a film about Christmas. Children will be supervised by competent helpers.

Application forms are available through Glenhuntly and Carnegie State Schools, Carnegie Library, and after-school play centres. General enquiries from Mrs. Coral Stolz (211 0323) or Rev. Robin Denholm (211 3063).

Contributions

to this page should be forwarded to the Editor, Caulfield Contact, Caulfield Town Hall, cnr. Glen Eira and Hawthorn Rds., Caulfield, 3162. by February 8, 1979.

HOW TO BECOME A MANDOLIN PLAYER

There are two to three hundred mandolin players in Australia and each might answer the question in a different way.

First you have to hear some good mandolin music — classical, baroque, contemporary or popular — and experience an overwhelming desire to play the instrument.

Such instantaneous conversions are now quite common. The music is played frequently on the radio and many people have attended concerts in Melbourne given by local and overseas orchestras from Japan and Germany.

Next step is to obtain an instrument, get some lessons and form a group, which is the same as saying — write to 64 Haldane Street, Beaumaris or ring 99 2312.

Dick van Welzenis, the chairman of the Concordia Mandolin and Guitar Ensemble is starting a training orchestra early in 1979. The location will be in Malvern.

Expert advice on the choice of an instrument, tuning and adjusting is based on years of experience.

Individual and group lessons can be arranged and from the training group you can expect to graduate to a regular orchestra sooner than you might have expected.

Why not give it some thought?

How much spare time do you have?

Most people at some time have thought about 'volunteering' during their 'spare time' but more often than not it's just a passing thought.

The twenty-four elderly folk who live at Regent Community, a hostel for frail aged in Elsternwick, at times feel very isolated.

They'd love to take a walk to the nearby shops, a Sunday drive or to go on a picnic. Even to learn to paint, to have an occasional game of bingo or carpet bowls.

However they need active, enthusiastic people to help them. If you are an organizer, a driver, a walker or just a good talker with a little spare time each week or each month, give Kay Murphy a call on 24 8926 and help make someone else's life a little happier.

Booran Players produce "The Miracle Worker"

Those who were privileged enough to see the 'Booran Players' in the William Gibson play of the childhood of Helen Keller will be looking forward to their next show. This new amateur group was formed by Susan Elliott who is also principal of the Cramer Academy of Danse.

Susan played the part of Annie Sullivan, the young dedicated teacher, once blind herself, who managed to first discipline and then communicate with the blind, deaf and dumb child Helen Keller, played in an astonishingly convincing way by Susan's daughter, Rachelle Elliott.

Staging in the modern manner enabled smooth production on a very small stage with furniture

and costumes which were authentically in period.

Despite it being the first public appearance for many of the cast, the audience was spellbound by a very moving performance of this rather demanding play at the Church of Latter Day Saints, Hawthorn Road.

Look out for their next show, a musical, and book early. The 'Booran Players' have shown that Caulfield can do it.

ARTS CENTRE CALENDAR OF EVENTS

Caulfield Arts Centre, 441 Inkerman Road,
North Caulfield, telephone 524 3277



December 4-17: Second Annual Walker Ceramic Award Exhibition and Sale — Second Annual Award offered to final year ceramics students throughout Australia, presented by Walker Ceramics — Victoria's largest supplier of ceramics materials. (extended gallery hours) (see

Sunday December 10: 10am-6pm at Caulfield Park — The fourth Rag Rug Making Workshop will be held at Caulfield Park. Bring all the family to explore this exciting craft and join in the festivities at the park.

Saturday January 13, 8.15pm: Melbourne Mandolin Orchestra — A programme of International classical and popular music. Guest Conductor — Mr. Fred Witt from the German D.Z.O. Tickets \$3.50 adults, \$1.50 students & pensioners. Bookings and enquiries: 99 2489 or 598 5275.

Gallery Hours

Gallery Hours: Tuesday, Wednesday 10 a.m. - 6 p.m.; Thursday, Friday 12 noon - 8 p.m.; Saturday, Sunday 1 p.m. - 6 p.m.

January 15-January 26: January School Holiday Workshops — Two weeks of fun filled workshop activities from 10-12 a.m. and 1-3 p.m. daily. (see pages 6 & 11)

January 22-January 26, 1-3pm: Children's Film Festival. Admission — \$1.00 adults, 70c children. (see page 11)

January 16 — February 11: Tribal and Traditional Textiles Exhibition — An exhibition of 90 Eastern and Western textiles featuring historical examples of

spinning, braiding, knotting, ikat, tie dye, weaving, macrame, notting, knitting, batik, embroidery and costume.

This interesting and educative touring exhibition will provide the opportunity of seeing original works from the National Gallery of Victoria Collection.

Touring under the auspices of the National Gallery of Victoria and in conjunction with the Victorian Arts Council.

Summertime '79

At the **Caulfield-Malvern Regional Libraries.**

All start at 2.30pm * Travelling storytimes for older children.
Caulfield City Library,
Maple Street, South Caulfield.

Friday January 5 — Welcome the New Year with a New Year storytime, 4-8 years.

Friday January 12 — Stories and puppets — make some simple puppets and bring them to life, 4-8 years.

Friday January 19 — * For your funny bones — stories and other activities for older children, 7-11 years.

Friday January 26 — Pigs, pigs, pigs — pigs to make and pigs to meet, 4-8 years.

Malvern City Library,

1257 High Street, Malvern.

Thursday December 28, 1978 — Lion around in the holidays — storytime and mask making, 4-10 years.

For younger children from 4-7 years —

Tuesday January 9 — Jungle mungle.

Tuesday January 16 — Monkey tales.

Tuesday January 23 — Filmstrips of picture books.

Tuesday January 30 — Wiggles, Squiggles and Giggles.

For older children from 7-12 years —

Thursday January 4 and Thursday January 25 — Films in the Malvern City Library Auditorium.

Admission Free. By ticket only — available at the library from Monday December 11.

Thursday January 11 — * Crazy capers — stories and other activities for older children.

Carnegie Branch Library,

Truganini Road, Carnegie.

Monday January 8 — * Crazy capers — stories and activities for older children, 7-11 years.

Friday January 19 — Hey presto — it's magic — stories and other fun, 4-8 years.

Friday January 26 — Wallabies, wombats and watchamacallets, 4-8 years.

Chadstone Branch Library,

Bowen Street, Chadstone.

Wednesday January 10 — Safari, 4-8 years.

Wednesday January 17 — Monkey business, 4-8 years.

Wednesday January 24 — Ghostly goings-on — stories and other activities for older children, 7-11 years.

Wednesday January 31 — Jungle tracks, 4-8 years.

Elsternwick Branch Library,

Staniland Grove, Elsternwick.

Monday January 8 — Fishy tales, 4-8 years.

Thursday January 11 — More fishy tales, 4-8 years.

Monday January 15 — * For your funny bones — stories and other activities for older children, 7-11 years.

Thursday January 25 — Bits and pieces from the beach — come and be inventive.

Games — jigsaw puzzles, chess and other games are available for use in the libraries.

Christmas Cheer

Christmas storytimes for 4 to 8 year olds.

Tuesday December 19 — Malvern City Library, 4pm.

Wednesday December 20 — Chadstone Branch Library, 2.30pm.

Thursday December 21 — Caulfield City Library, 2.30pm.

Thursday December 21 — Elsternwick Branch Library, 2.30pm.

Community Centre News



6 Maple Street, South Caulfield: 524 3288

How about Monday lunch?

No senior citizen need be alone on Mondays at lunchtime because the Caulfield Community Centre offers a lunchtime get together.

A delicious meal for just \$1 is served at 12.15 p.m. — the lively conversation comes for nothing. Lunch is followed by a wide range of activities including billiards and arts and crafts. For those who prefer to continue chatting over a cup of tea — there are always plenty of talkers.

Have your next birthday at the centre.

Children's birthday parties at the Community Centre are very popular. It costs very little to hire the centre and have access to all its facilities. Staff are available to act as play leaders, trampoline supervisors or to organize games and activities.

Why not look over the centre between 9 a.m. and 9 p.m. daily. Enquiries are welcome — ask for Ron, Jenny or Denise.

Second Annual Walker Ceramic Award.

The Second Annual Walker Ceramic Award will be held at the Caulfield Arts Centre from December 4 through December 17, 1978 with an official opening by Dr Eric Westbrook, Director, Ministry for the Arts, to be held on Sunday, December 3 at 3 p.m.

This innovative project offers the substantial award of \$1,000. It is open to all full time final year ceramic students of Tertiary Institutes. The Award provides encouragement for students, by providing an opportunity for the public to recognize the talent displayed by these young Australian artists and in many cases, to help launch careers.

The Award is donated and the exhibition presented by Walker Ceramics, suppliers of much of the clay, equipment and pottery materials used by tertiary institutions, professional potters and hobbyists throughout Australia. Such generous support of young artists by the private sector is certainly to be commended and encouraged.

The Award attracted many interstate entries in its first year and an even greater interstate participation is anticipated for 1978.

Students are required to submit four entries for the Award. Judgement will be made on an assessment of the submissions as a group.

Apart from the Award Section, an Open Section will be exhibited so that students can offer for sale other examples of their work.

Dennis Colsey, Arts Consultant; Janet Mansfield, Editor, Pottery in Australia (Sydney); and Alan Watt, Australian Potter and Educator make up the judging panel for the 1978 Award. For further information ring the Arts Centre, telephone 524 3277.



PLIGHT OF THE WHALE?
How would you feel if you were being hunted; that the whole human race was being threatened with biological extinction?

PROTECT YOUR HOME
Are you inviting a burglar into your home?

This is what you think about Contact

4.5 cents goes a long way
Last year, Caulfield Council received \$4,954,988 from rates.



Some people are old at 40
Theobald is a young man.

Australia, about 3,500 children travelling in cars and being as a result of collisions.

RATE ROLL KEPT LOW

4.5 cents in the dollar was spent on Social Development and Recreation and Culture Services and Programmes. So what did you get for it?

While 'Rape' and 'Murder' stories continue to head the front pages of our daily papers, women cannot afford to rely on the old paper, per pot or haplin to defend them.

Election

How we saw the year

HOW TO GET A JOB.
At this very moment, one quarter of a million young people throughout Australia are unemployed. They have never had a job and don't see much prospect in the near future of getting one.

PROTECT YOUR CHILDREN AS YOU PROTECT YOUR

Hopefest
neighbours, celebrate.

WANTED VOTES
VOTING IS COMPULSORY IN THE CITY OF CAULFIELD

Congratulations Max!

Open Committees
Day of Ceremony

I'm Stuck.

Noise can be a Nuisance

New Books
We were wrong

Results...

NEERIM ROAD RAILWAY CROSSING
The Minister of Transport, Hon. J. A. Rafferty requested the Victorian Railway Board to prepare a report on alternative ways of providing grade separations at the Neerim Road level crossing in Glenhumpy.