

Corner Hawthorn and Glen Eira Roads, South Caulfield 3162  
(PO Box 42, South Caulfield 3162) Phone 9524 3333  
Internet - <http://www.gleneira.vic.gov.au> Email: [mail@gleneira.vic.gov.au](mailto:mail@gleneira.vic.gov.au)

## Budget benefits community

**Glen Eira City Council will spend nearly \$10 million on capital works in its 1997/98 Budget - the first brought down by the elected Council. The overall Budget is worth \$54 million.**

The biggest portion of the Budget - close to \$6 million - will be spent on vital maintenance works to roads, drains and buildings, which have been inadequately funded in the past.

Major projects on community facilities include \$250,000 repair work on East Boundary Road pool and \$130,000 on Caulfield Pool, and improvements to Packer Park Velodrome. About \$300,000 will be spent on strip shopping centre improvements.

Rates in the City of Glen Eira have been set at 4.7835 cents in the dollar, a 2.4 per cent increase. The State Government has required councils to pay for the \$400 million local government superannuation fund shortfall revealed recently, and has allowed Councils to increase their rates between 1 to 3 per cent to contribute to the cost of the blowout. This accounts for 1.7 per cent of Glen Eira's increase.

Council will raise just over \$28 million from rates and garbage charges, the latter increasing by 0.7 per cent (less than inflation).

Mayor Cr Alan Grossard said: "The Budget for the next 12 months is tight but fair and everyone in the community will benefit, from young to old.

Funds will go to older people's facilities, playgrounds, child care and family services.

"Funds will be injected to increase library materials, improve Information Technology, repair East Bentleigh pool for re-opening next summer, improve sports pavilions and update Packer Park Velodrome.

"The Budget also has no new loans, and by the end of the decade, the City will be debt free.

"The Budget took months of planning and I thank the members of the Glen Eira community who participated in the consultation process and helped shape the outlook of the City over the next 12 months."

## Student murals brighten shopping centre



Teacher Marianna Gentilin, artist Colleen Burke and young artists of Carnegie Primary School are delighted with their local "Monopoly" version.

**If you happen to drive down Koornang Road, Carnegie and cross the railway line you will notice twelve bright murals that are now hanging on the wire fence alongside the pedestrian overpass.**

These colourful and creative art works are the combined efforts of local artist Colleen Burke, Carnegie Primary School's art teacher Marianna Gentilin and all the students of the school.

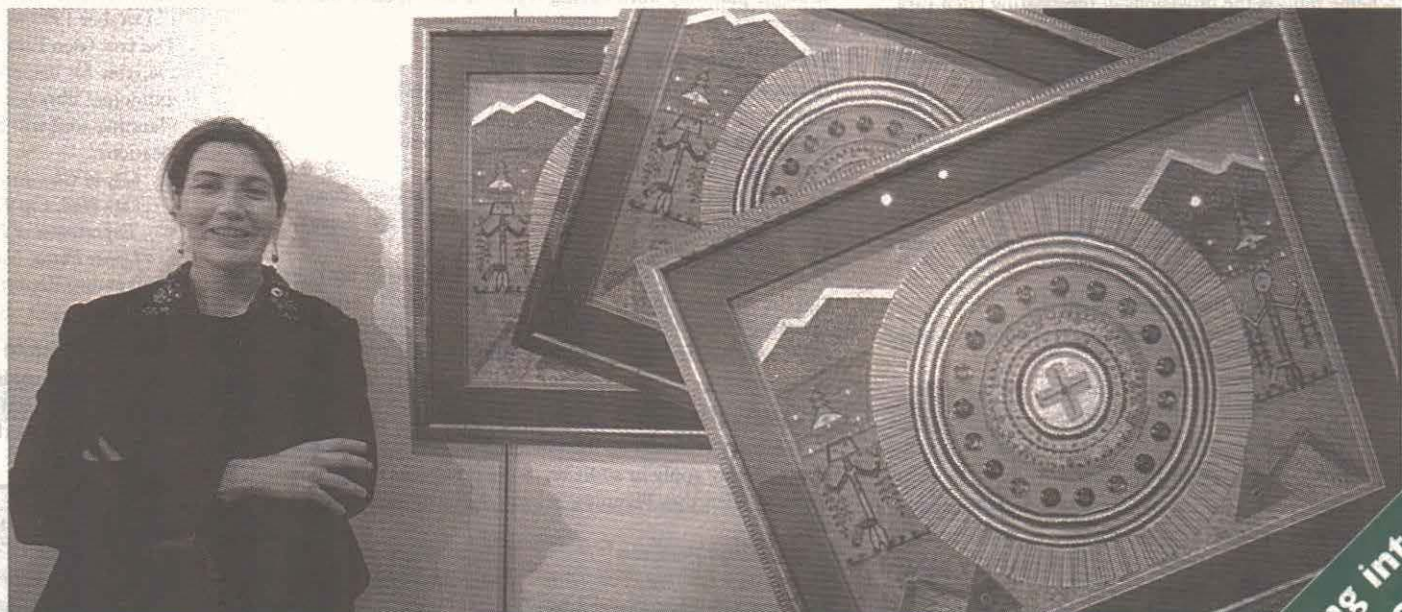
The Koornang Road Mural Project is part of the beautification of Carnegie Shopping Centre. It was organised by Council's strategic planners in conjunction with the Arts department, and Colleen Burke was appointed artist-in-residence at Carnegie Primary for two weeks.

The students have produced 12 murals, each coming from a different grade, with a different theme. Their delightful work will brighten Koornang Road for many months to come.

The murals were launched last month by Mayor Cr Alan Grossard and the school received a plaque from Carnegie Main Street Traders Association president Gerald Galatis.

### Index

|                      |     |
|----------------------|-----|
| Planning             | 2   |
| Free Internet        | 3   |
| Feedback             | 4   |
| Swing into Spring    | 5-7 |
| Arts                 | 8   |
| Needle Safety        | 9   |
| Rates - translations | 10  |
| Doing Business       | 11  |
| Community Diary      | 12  |



Four hundred people attended the opening of the Artists in Recovery "Coming Up For AIR" exhibition at the Glen Eira Complex last month. Above: Margi Gibb and her work Broken Arrow. Digital imaging by Les O'Rourke.



*Planning and Environment Act 1987*  
*Planning and Environment (Planning Schemes) Act 1996*

## **Glen Eira Planning Scheme**

### **Notice of preparation of planning scheme**

The Glen Eira City Council has prepared a new Glen Eira Planning Scheme. The planning scheme affects all of the area of the municipal district of the Glen Eira City Council.

The planning scheme introduces a new Glen Eira Planning Scheme as required by *the Planning and Environment (Planning Schemes) Act 1996*, including a new format containing selected State standard provisions from the *Victoria Planning Provisions*, a municipal strategic statement, state and local policy frameworks, standardised zones, overlays, particular provisions relating to use and development, and a number of administrative provisions and definitions. The new planning scheme also incorporates a number of documents specified in the planning scheme, and contains new maps applying the standardised zones and overlays to land within the area covered by the scheme.

The planning scheme, including incorporated documents and maps, can be inspected during office hours at City of Glen Eira, Municipal Offices, City Hall, Cnr Hawthorn & Glen Eira Roads, Caulfield South and at the Department of Infrastructure, Customer Service Centre, Upper Plaza, Nauru House, 80 Collins Street, Melbourne.

**Submissions about the planning scheme must be sent to:**

**Chief Executive  
City of Glen Eira  
PO Box 42  
Caulfield South 3162**

**Submissions must be received by 5pm Friday 17th October 1997.**

A submission may include a request that a State standard provision be included in or deleted from the planning scheme, but cannot request a change to the terms of any State standard provision.

Margaret Douglas  
Chief Executive

**GLEN EIRA CITY COUNCIL**

*Corner Glen Eira & Hawthorn Roads Caulfield 3162 PO Box 42 Caulfield South 3162*  
**TELEPHONE 9524 3333 / FACSIMILE 9523 0339 EMAIL [mail@gleneira.vic.gov.au](mailto:mail@gleneira.vic.gov.au)**

1875

Received of the Treasurer of the  
Board of Education the sum of  
\$100.00 for the year 1875

Witness my hand and seal this  
1st day of January 1875

John J. [Name] [Title]

Secretary of the Board of Education

City of New York

1875

# SNIPPETS

## Leap into colour

The Freddo Frog colouring competition held as part of the Look Before You Leap launch in last month's issue attracted the interest of our younger readers.

Pictures of Freddo were downloaded from the KidSafe Internet site called [www.thegreenwebb.com.au](http://www.thegreenwebb.com.au), printed and coloured in.

Congratulations to the winners, who will each receive in the mail a Freddo Frog t-shirt:

- Danielle Vosk (aged 6) of McKinnon*
- Peter (3) and Katie (5) Petros of Elsternwick*
- Ella (7) and Joshua (5) Benjamin of North Caulfield*
- Sam Levin of East Malvern*

## Suburb name changes: update

Thank you to the more than 800 people who responded individually to Council's request for community feedback on the recent proposal by the Victorian Place Names Committee to properly define all suburb boundaries within Glen Eira (Glen Eira News June edition).

Council will shortly be recommending its own preferred boundary option back to the Place Names Committee. Look out for next month's 'Glen Eira News' for full details on Council's recommended model.

## Council meeting dates

Ordinary Council meetings of the Glen Eira City Council are held in the Council Chamber, corner Hawthorn Road and Glen Eira Road, Caulfield at 7.30pm on the first and third Monday each month. Meetings are open to the public and you are welcome to attend. Agendas for the meetings are available from the Service Centre and at branch libraries on the day of each meeting.

Coming meeting dates are:  
4 & 18 August, 1 & 15 September.

## Correction!

The amendments to the Resource Guide published in the last edition of the Glen Eira News incorrectly stated that details for Frank Durra JP should be deleted.

The amendment should have been to change Mr Durra's street name spelling. Our apologies to Mr Durra for this error.

Please include in your Resource Guide: page 97 (under Glen Huntly)

**Frank Durra JP**  
3/1 Mackay Avenue, Phone: 9578 8046  
Phone for appointment first.

Future amendment listings will be published in the Glen Eira News quarterly.

## Dear Editor

"We have been inundated with phone calls and messages and I have been enlisted to help sort through them, providing guided station tours and having interested new members sitting in on Thursday Drive with me.

"And it's due to the advertisement we placed in the June issue of the Glen Eira News! There certainly is a lot of interest out there in a local community radio station. Thanks for the coverage."

Helen Cook  
88.3 Southern FM

## A big thank you

Thank you to the Japanese School in Caulfield, which kindly donated \$300 to the Integration Support Program.

This program facilitates access and provides resources to children from non-English speaking backgrounds, into the various children's services within the City of Glen Eira.

Support is also given to children with disabilities and developmental delays, and their families.

The generous donation allowed the program to buy five kimonos. Pre-school aged children are learning, through play, about customs in Japan.

## Copelen opens new office in Caulfield

Copelen Child and Family Services opened a new head office and service centre at 5/115 Hawthorn Road, Caulfield North on 24 June. Involved in the launch were Bentleigh MLA Mrs Helen Shardey, Cr Veronika Martens and the Rev. Ian Porter, of St Stephen's Church, North Caulfield.

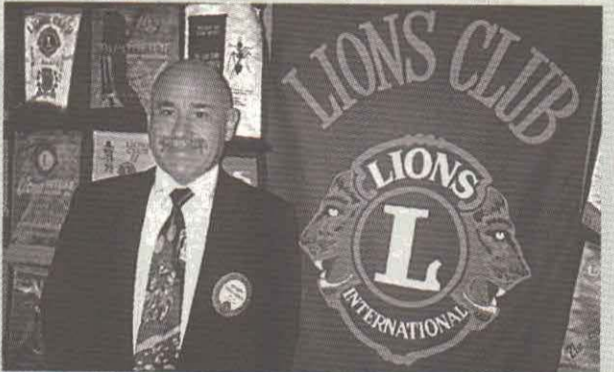
Copelen's executive director, Mr Peter Renkin, outlined the work of the two major programs operating from the Caulfield office: the Adoption and Permanent Care program, which places children who are unable to live with their own parents, and the Adoption Information Service, which assists adoptees or their family members.

Mr Renkin said Copelen planned to develop additional family services. "Our Pre-School Field Officer and Parenting Education programs already include the City of Glen Eira, so we have a range of services covering this area." Details: 9530 0666.

## Your School

The regular feature "Your School" has been held over this month because of the "Swing into Spring" liftout.

Look out for school news in the next edition.



Geoff "Goldy" Goldsmith has been elected president of the Lions Club of Carnegie for 1997/98. Geoff (pictured) welcomes new members to work for local community projects, such as the hospital and youth exchange, as well as many requests for help.

The Lions hold dinner meetings on the first and third Tuesday of the month, from 6.30pm, at the Carnegie RSL and Citizens' Bowling Club, Rosanna Street, Carnegie. Details: contact secretary Glenys Needham on 9569 7269.

# The new Glen Eira Planning Scheme

**The City of Glen Eira has prepared for exhibition a new planning scheme for the municipality. The new scheme affects all of the land in the municipality and sets out land use provisions to guide the future development of the municipality.**

The new scheme reflects the provisions of the existing Glen Eira Planning Scheme however a more streamlined approach has been used which will offer greater flexibility and certainty for residents, businesses and the development industry. Features include:

- a local planning policy framework and Municipal Strategic Statement which identifies long term directions about land use and development in Glen Eira and presents a vision for the community;
- new standardised zones and overlay controls to replace all existing local zones;
- new maps which apply the standardised zones and overlay controls to land within the municipality.

## Why has this scheme been prepared?

The State Government has recently introduced a number of major reforms to the planning system.

Councils across the state are required to prepare new planning schemes which use a consistent set of planning provisions and which have a more strategic focus.

## What will the scheme contain?

The scheme is in a new format containing selected State standard provisions from the Victorian Planning Provisions, a Municipal Strategic Statement, state and local policy frameworks, standardised zones, overlays, particular provisions relating to use and development and a number of administrative provisions and definitions.

## What is a Municipal Strategic Statement?

The Municipal Strategic Statement is a strategic document of broad visions for the municipality, including long term visions for land use and development. It sets out the objectives of Council's strategic planning work having regard to social, economic and environmental considerations.

## What Zones will be included?

In translating the existing planning scheme into the new format, the number of zones has been reduced from 37 to 13. The new zones are considerably more flexible and allow a greater range of uses in each zone. They include:

- 2 Residential Zones.
- 2 Industrial Zones.
- 5 Business Zones.
- 3 Public Land Zones.
- 1 Special Use Zone

The zones have been applied to land on the basis of the existing use and the strategic objectives for the land identified in the Local Planning Policy Framework. The zones are standard statewide zones which have been taken from the Victorian Planning Provisions.

## What Overlays will be included?

If an overlay is shown on the planning scheme map, the provisions of the overlay apply in addition to the provisions of the zone. The new Glen Eira Planning Scheme will feature 5 overlays. These are:

- Vegetation Protection
- Heritage Overlay
- Potentially Contaminated Land
- Land Subject to Inundation
- Public Acquisition

Owners and occupiers of properties affected by overlays will be individually notified.

## What zone will my property be in?

In most cases the changes will be fairly minimal. Where significant changes are proposed to the zoning of your property Council will write to you individually. If you would like to find out more about the zoning of your property or surrounding properties you are encouraged to contact Council.

## How do I find out more?

The scheme is on exhibition for public comment for 2 months, until 17 October 1997.

The new Glen Eira Planning Scheme and associated maps will be available for inspection during office hours at the City Hall and municipal libraries.

Planning staff will be available to answer questions at the following locations:

- City of Glen Eira Municipal Offices  
City Hall, Cnr Hawthorn & Glen Eira Roads, Caulfield South
- Department of Infrastructure, Customer Service Centre  
Upper Plaza, Nauru House, 80 Collins Street, Melbourne

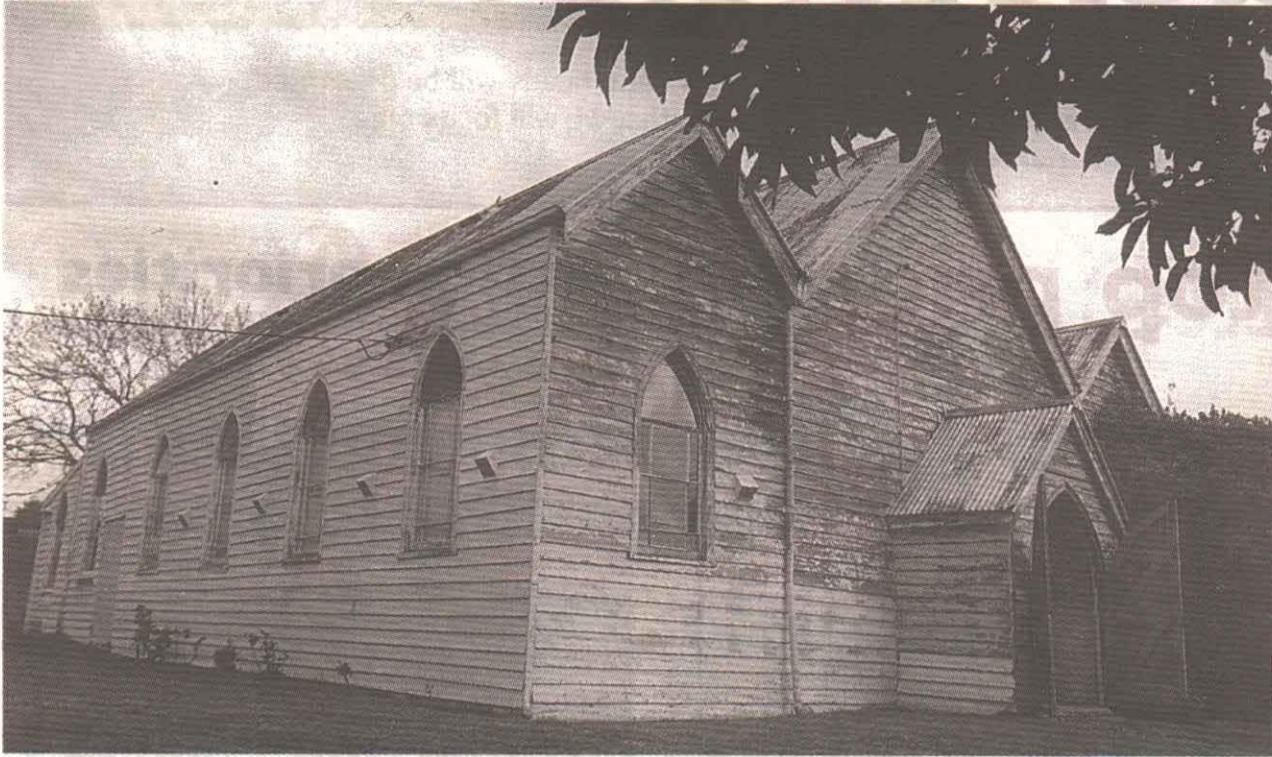
Explanatory Reports may be collected free of charge from these locations.

## How do I make a submission?

Submissions must be made in writing and may suggest changes to the Municipal Strategic Statement or Council's application of the new zones and overlays but may not suggest changes to the content of state zones.

Submissions should be addressed to:  
Chief Executive, City of Glen Eira, P O Box 42, Caulfield South 3162  
Submissions must be received by 5pm Friday 17 October.  
Enquiries: Phone 9524 3374 or fax 9524 3432.

# Church for sale



**Is there a future for St George's Church hall? It's already had one move in its history and now Council is hoping to find it a new home, as strategic planner Jason Close reports.**

The land where St George's Church hall, in Mavho Street, Bentleigh, stands is to be redeveloped for townhouses. Council has issued a permit for the works, and is seeking expressions of interest on behalf the owners to have the building removed rather than see it demolished.

The nave of the mid-Victorian timber building was originally erected in Manningham Street, Royal Park in 1876. The south side was added in 1878 and the north aisle the following year. It remained in use as a church until 1916 when it was used for Sunday School activities.

Later, as the new suburb of Bentleigh sought to establish an Anglican church in Mavho Street, it

acquired the old Manningham Street church hall. The building was relocated in sections and re-erected in 1926. It remained as the church until 1955, when it was again changed back to a church hall, and a new church built beside it.

Sadly, time has run out following the closure of St George's and Council hopes a reader might be interested in giving the old church yet another lease of life on another site.

The building is unusual for a timber church in that it is bigger and distinguished not only by a triple gabled roofed form but also the intact interior, with lofty varnished pine ceiling and varnished scissor trusses carried on chamfered timber posts with relatively plain capital moulds.

Anyone interested in finding out more about the building, can contact Jason Close on 9524 3374.

## Free Internet in the library

**Free Internet access is now available through the Glen Eira Library and Information Service at Bentleigh, Caulfield, Carnegie and Elsternwick libraries.**

To avoid disappointment, bookings are recommended and may be made in person or by telephone. Bookings are of 55 minutes duration.

On the libraries' networked PCs, you can

- surf the Net
- prepare a resume
- put your business data on a spreadsheet
- type a letter

On the Internet you will discover all sorts of information for serious study or for fun and recreation, such as today's news from Russia, travel information, complete works of Shakespeare, historical records, etc.

Training sessions will be offered in the near future.

### Catalogue available

The Glen Eira Library and Information Service catalogue can now be accessed over the World Wide Web.

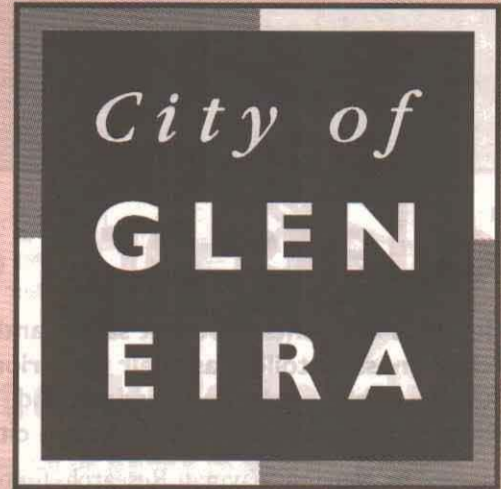
We are the first public library in Australia to have its catalogue available on the Internet in 'browser' format.

You can search the catalogue by keyword, author, title, or subject. This means you can look on our catalogue for your favourite author or for materials on a particular subject from home, school, work or anywhere in the world...

You will find our catalogue through the City of Glen Eira homepage at:

[www.gleneira.vic.gov.au/library.htm](http://www.gleneira.vic.gov.au/library.htm)

## Glen Eira - bolder and brighter



You may have noticed a different look to the Glen Eira logo which sits on the front page of the News. Over the past three months, we have developed a new Glen Eira symbol and image for printed and promotional material, to provide a consistent and professional approach.

The new image has been introduced gradually to allow existing stocks of stationery to run out, eliminating unnecessary waste.

The original Glen Eira image was developed after the city was formed in late 1994, but it was felt there was room for improvement.

Basically, the words are the same, but there is a warmer and stronger feel to it.

Developed by Storm Design, the logo retains the colours burgundy and green, with yellow added for more design options.

## RATES PAYMENTS

Glen Eira ratepayers are receiving notices for their rates and charges for the 1997/98 financial year. These charges cover the period from 1 July, 1997 to 30 June, 1998. The last rating period was from 1 October, 1996 to 30 June, 1997, a nine month period only.

Glen Eira City Council rates are now payable by four instalments, on the following dates:

- Tuesday, 30 September, 1997
- Monday, 1 December, 1997
- Monday, 2 March, 1998
- Monday, 1 June, 1998

Individual reminder notices will be sent out one month prior to each instalment due date. You may still take advantage of the pre payment option until 30 September 1997, however after this date all ratepayers will be placed on the instalment method of payment (excluding people on the Direct Debit system of payment). Interest will apply on any amount outstanding after each date specified.

Payment may be made at any bank. You do not need to have an account with the bank at which you make your payment. The National Australia Bank will not charge a transfer fee, other banks may. You can also mail your payment to:

**Glen Eira City Council  
GPO Box 184C, MELBOURNE 3001.**

Alternatively, for your convenience you can arrange to pay your rates by nine equal monthly payments through the Direct Debit payment system.

Enquiries on 9524 3333.

The information in this publication is of a general nature. The articles contained herein are not intended to provide a complete discussion on each subject and/or issues canvassed. While the information contained herein is believed to be correct, no responsibility is accepted for the accuracy of any article and/or any matter which is discussed herein. The Glen Eira City Council does not accept any liability for any statements or any opinion, or for any errors or omissions contained herein.

# Feedback Feedback

Welcome to Feedback - where results of market research on your views and needs will be presented, and Council will report on developments. For the next few months, we will focus on a survey undertaken by the Parks Service.

## Toilets are a top priority

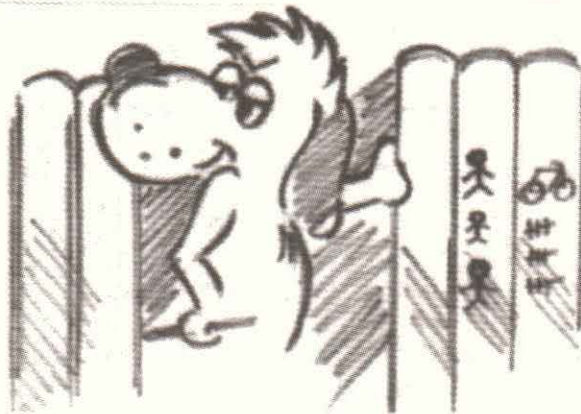
**G**len Eira residents have put safety and cleanliness of toilets as their top priority in a survey about parks and gardens and sporting and recreation facilities in the city.

The survey, by Newton Wayman Research, found resident priorities included absence of dog litter, dogs under effective control in parks and gardens, and an improved appearance for streetscapes.

Other areas for improvement were opportunities for residents to contribute to planning of parks and gardens and streetscapes, and the desire for better communication about Council works and toilet opening hours.

Newton Wayman Research surveyed 353 residents by phone and conducted 34 interviews among sporting organisations in May 1997. The objectives were to identify areas for service improvement, priority areas for resource allocation, and to measure Council's performance.

The resident survey revealed high usage of parks, with 71 per cent of respondents visiting neighbourhood parks and 49 per cent using



Caulfield Park. Only 7 per cent of residents surveyed had not visited any parks in the past year. Respondents on average had visited a sporting ground 2-3 times in the past 12 months - the most popular being Caulfield Park and Duncan MacKinnon Reserve.

One in five East Bentleigh residents raised the issue of last summer's closure of the East Boundary Swimming Pool, without prompting.

## Action priorities

### Parks and Gardens

- Safety and cleanliness of toilets very important.
- Most respondents felt the absence of dog litter was critical or very important (79 per cent). Only one-third (30 per cent) were satisfied with the issue. 40 per cent claimed a need for "some" or "a lot of improvement". 7 per cent suggested people be more responsible for picking up dog litter and educated about using "pooper scoopers".

### Sport and Recreation Services

- Presentation and maintenance of facilities of considerable importance.
- Two thirds of respondents (60 per cent) felt that meeting requirements of people with special needs/disabilities was critical or very important. One third (31 per cent) requested improvement.
- Need for up-to-date information on local sport and recreation facilities, services and programs.

## Hopetoun Gardens

### PARKS OF GLEN EIRA

The picturesque Hopetoun Gardens - Glen Huntly Road, Elsternwick has historic cannons and bandstand, shady ornamental trees, a modern playground and annual flower displays.

Back in 1857, the Caulfield district contained 11 reserves. Apart from reserving land for the Brighton and St Kilda cemeteries, most was swampy land. The first real "garden parks" appeared between Federation and World War 1. Public open space was needed, particularly for the Caulfield and Elsternwick Town Bands, because the Elsternwick Railway Reserve was too small for the crowds for Sunday afternoon music.

The head gardener of Malvern, Mr Pockett, who had overseen the development of Caulfield Park four years earlier, designed Hopetoun. "The gardens were opened on 31 July 1908 amid great fanfare and brass band music. Cr Dunbar had obtained ornamental trees from the Botanic Gardens, though the ANA (Elsternwick branch) and Elsternwick Progress Association had urged that all plantings be native."

The two cannons at the Glen Huntly Road entrance were manufactured in the Royal Arsenal in Woolwich, England, in 1866. The 80-pound, muzzle-loading guns weigh just over 4 tonnes, and were originally located at Fort Gellibrand in Williamstown in 1901 "in case a foreign power tried to invade these shores". They were moved to Hopetoun Gardens in 1910.

In 1946, Hopetoun Gardens underwent major replanting after 600 begonia plants were stolen. The bandstand was renovated in 1995.



## An experience of a lifetime

Applications are invited from young business and professional men and women aged between 25 and 35 years to join a Rotary Group Study Exchange team of four or five persons who, under the guidance of an experienced Rotarian, will participate in an intensive 5 week vocational and cultural study tour to be hosted by Rotary District 1090 in England.

The team's international travel expenses are paid for by the Rotary Foundation. The team member will be hosted in the home of Rotarians. The trip will begin on about 23 January, 1998.

Application forms may be obtained from Ross Rampling, Rotary Club of Caulfield, PO Box 281, Caulfield South 3162, or phone 9528 3208.

**Applications close on 6 August.**

## Solicitor Conveyancing

**\$150**

plus Title & other search fees, etc

**Wills \$60**

**Loans arranged**

**Powers of Attorney \$40**

**Probate, Mortgages, etc**

**Phone: David Anthony (Solicitor)**

77 Grange Road, Glen Huntly 3163  
(Cnr Neerim Road)

**9571 1073 any day**

Open until 7pm weekdays

Glen Eira City Council invites you to...

Shake off those winter blues and

# Swing into Spring!

On 12, 13, 14 September



With SIX separate events starring Australia's leading theatre, television and recording personalities

Liftout Program

**Friday 12 September**

## Rhonda Burchmore

With her dancers and trio

One of Rhonda's last Australian performances prior to her New York Broadway debut in 'Easter Parade'

Auditorium  
Glen Eira Arts Complex

**Saturday 13 September**

## The Ted White Big Band

The hottest Big Band around brings you the unforgettable sound of the music greats

Auditorium  
Glen Eira Arts Complex

**Saturday 13 September**

## ZOOM Music Showcase

Some of Melbourne's most exciting new bands, plus local acts.

Gryph Inn  
Monash University

**Sunday 14 September**

## Franciscus Henri

Australia's most successful children's entertainer.

Classic Cinema  
Elsternwick

**Sunday 14 September**

## The New Tango Quintet with Jazz at the Classic

Direct from their outstanding success at the Perth Festival, presenting their individual style of jazz.

Classic Cinema  
Elsternwick

**Sunday 14 September**

## Nehama Patkin and young musicians of excellence

Come and hear these fine young Australian stars of tomorrow

Auditorium  
Glen Eira Arts Complex

**Full details inside.**



City of  
**GLEN  
EIRA**

**Arts**

Tickets for these events are limited, so book early to avoid disappointment. 'Swing into Spring' is a City of Glen Eira Arts and Entertainment Project.

## Rhonda Burchmore

**F**rom television to the big screen, musical theatre to opera and cabaret, there are few entertainment mediums Rhonda Burchmore has not embraced with her wide ranging talents.

Rhonda's credits include the Australian production of Sugar Babies opposite Gary McDonald and Broadway legend Eddie Bracken, and the London production of the same musical which starred Mickey Rooney and Ann Miller. Also in the UK, she starred opposite Anthony Newley in the revival of Stop The World I Want To Get Off.

Other Australian stage credits include Song and Dance, They're Playing Our Song and the sexy Diana in Lend Me A Tenor. With the Victorian State Opera she won critical acclaim for her performances as Queen of the Fairies in Iolanthe, Prince Orlofsky in Die Fledermaus with Joan Carden, An Evening With Sondheim and the title role in Annie Get Your Gun.

Rhonda has appeared on almost every television variety and awards program in Australia including

regular appearances on The Midday Show and Hey Hey It's Saturday.

She has recently performed in her own one woman show Red Hot and Rhonda following starring roles in Dancin Man and Hot Shoe Shuffle which was the first Australian musical to open in London's West End.

A great favourite at the City of Glen Eira's Carols by Candlelight last year, we welcome Rhonda back to star in the first of our special monthly morning programs That's Entertainment, a great opening show for 'SWING INTO SPRING'.

Rhonda will shortly be heading for New York and Broadway where she will star opposite Tommy Tune in Irving Berlin's musical Easter Parade.

**Friday 12 September**

**Auditorium Glen Eira Arts Complex  
12 noon Admission: \$7.00**

**Bookings:**

**Glen Eira City Council Service Centre  
Telephone: 9524 3333**



## FRANCISCUS HENRI

**F**ranciscus Henri is a magical performer with the rare ability to enthrall large audiences of children and adults. A man with a rich and varied artistic background, Franciscus paints and writes stories in addition to recording and performing his wonderful music for young audiences.

Franciscus Henri is Australia's most successful children's entertainer with a rich career that began with his first children's recording in 1972. He has recorded 15 albums and has been nominated for four consecutive ARIA's.

His new creation is 'Mister Whiskers and his dog Smiggy'.

Having entertained many thousands of Australian children for nearly 25 years, Franciscus is poised to break into the North American market. In 1996 he was asked to share the stage with America and Canada's best known children's entertainer Raffi at the Vancouver International Children's Festival.

**Sunday 14 September**

**Classic Cinema, 9 Gordon Street Elsternwick  
Two shows at 10.30am and 12 noon  
Admission: \$8.00**

**Bookings: Classic Cinema**

**Telephone: 9523 9739**

### Forthcoming Events

**Thursday 16 October**

**That's Entertainment**

Auditorium Glen Eira Arts Complex

11.30am

**Admission: \$7.00**

The second program of That's Entertainment presenting outstanding Australian entertainers.

**Bookings: Glen Eira City Council Service Centre**

Telephone: 9524 3333

**Thursday 13 November**

**That's Entertainment**

The final program in this series for 1997

**Sunday 21 December**

**Carols by Candlelight sponsored by Tattersalls**

The City of Glen Eira's main Community event for the year. Make a note in your diary now.

This year Carols will be staged with the assistance of the Victorian Amateur Turf Club at the Caulfield Racecourse. Last year a crowd of 10,000 joined in the fun. Set aside this wonderful evening to be held on the lawns at the Terrace Whittier Stand.

## The New Tango Quintet

**C**ombine the romance of the tango with the street wise daring of jazz and you get the nuevo tango - music of raw sensuality and burning passion.

The New Tango Quintet draws on the musical legacy of Astor Piazzolla, Argentina's nuevo tango supremo, and makes its way into new territories of discovery, creating its own music - music that satisfies the intellect and arouses the emotions.

The group's rich cultural background is frequently reflected in a growing repertoire exploring classic musical forms such as tango, waltz, polka and the Spanish habanera - Jazz, Celtic, New Orleans and Latin American.

The New Tango Quintet is Doug de Vries - guitar, Dan Bourke - violin, George Butrumlis - accordion, Jex Saarelaht - piano, Philip Rex - bass.

**Sunday 14 September**

**Classic Cinema, 9 Gordon Street Elsternwick, 1.15pm**

**Admission: \$11.00, Concession \$8.50, Children \$6.50**

**Bookings: Classic Cinema Telephone: 9523 9739**

**Proudly supported by the Classic Cinema**

**CLASSIC**  
C I N E M A



# The Ted White Big Band



Eighteen of Australia's outstanding musicians combine to create one of the hottest big bands around to bring you the unforgettable sounds of Glenn Miller, Benny Goodman, Count Basie, Duke Ellington, Tommy Dorsey, Woody Herman, and Stan Kenton with a special tribute to Frank Sinatra featuring vocalist Andy Free.

Led by gifted Melbourne musician Ted White, music has been his way of life working with name bands such as Teddy Foster, Eric Winstone and Ronnie Aldrick and the Squadronnaires and stars like Sammy Davis Jr, Julio Iglesias, Shirley Bassey, the Bee Gees, Gladys Knight and The Pips, and many others.

If you hear only one Big Band concert this year - this MUST be it

**Saturday 13 September**

**Auditorium Glen Eira Arts Complex**

**8 pm**

**Admission: \$7.00**

**Light refreshments available**

**Bookings:**

**Glen Eira City Council Service Centre, Telephone: 9524 3333**

## ZOOM Music Showcase

**A**s part of the 'SWING INTO SPRING' celebrations, Youth services will stage a music concert showcasing some of Melbourne's most exciting new bands, as well as local acts. As part of 'ZOOM MUSIC', the aim is to bring live popular music to the young people of Glen Eira in the form of a safe, accessible and affordable event.

Following the success of the last Zoom in March with bands such as The Fauves and Even this event will be even bigger, so make sure you wont miss out this time. The headlining acts for Zoom will be announced very soon, so stay tuned. Two of the local support acts appearing at Zoom are:

### Bidston Moss

The band have been together, in their present form, for the past 18 months. Their six track debut self-titled EP was released in Melbourne in 1997, scoring positive coverage in Rolling Stone and Drum Media. The CD is now in all good Melbourne record shops and the band have received positive press on air and in print. Their video clip "Penguin" is soon to be released.

### Sassy

Aged 17, Sassy has played with the Fauves and Even. She plays folk pop with a message and has been

compared to Alanis Morissette. Sassy will be the opening act so come and see what all the fuss is about.

**Saturday 13 September**

**Gryph Inn Monash University**

**K Block ground floor**

**Cnr Queens Ave & Sir John Monash Drive**

**Opp Caulfield Station**

**7.00pm to 11.30pm**

**Admission: \$7.00 Tickets at the door**

**Zoom Information, Mikey: 9524 3392**

## Nehama Patkin and young musicians of excellence



**P**erforming solos, duets and ensembles to greet the advent of Spring with children aged 5 to 18 years.

The program includes premier performances of Elgar's Pomp and Circumstance March for eight hands (two pianos) and excerpts from Handel's Water Music for eight hands and orchestra. Also featured will be a choir and dancers.

Nehama Patkin is one of Australia's foremost performers and educators. Her work encompasses solo piano recitals, playing with orchestras, teaching, adjudicating, producing and directing shows. She has performed and taught in the USA, Israel, UK, Finland, Sweden and Canada and many parts of Europe.

Her reputation as an inspiring and illuminating teacher of both the traditional and Suzuki methods is highly recognised. Her honours include the Avon Spirit of Achievement Award for Women of Excellence in the Arts, and being chosen as one of nine Women Achievers of the Year by WIZO, the World Jewish Women's Organisation. Nehama serves on a number of committees including the Malcolm Sargent Cancer Fund for Children.

**Sunday 14 September**

**Auditorium Glen Eira Arts Complex**

**2.30pm to 4pm**

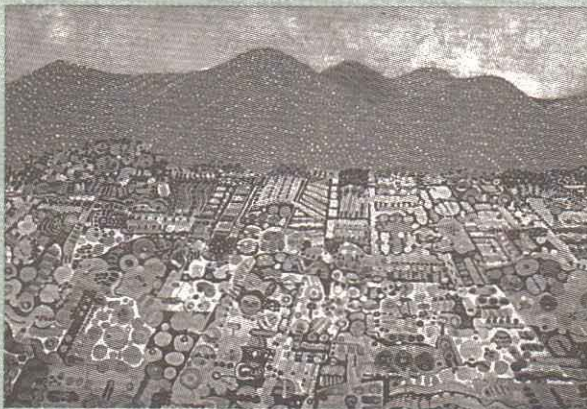
**Admission free**

**Gold coin donation to the Malcolm Sargent Cancer Fund for Children gratefully accepted.**

# Arts

brought to you each month by the Glen Eira Arts Complex 9524 3287

## David Dalgarno paintings



A painting by David Dalgarno to be featured in his forthcoming exhibition.

David Dalgarno's paintings range from a traditional 'realist' style, to surreal interpretations of the land in bold patterns. The landscapes depicted in the exhibition are inspired by the tortured rock formations near Alice Springs, or the tropical rain forests of far North Queensland, and the red dirt road from Cape Leveque.

David's exhibition opens concurrently with the Melbourne Society of Women Painters & Sculptors at 6pm, Tuesday 5 August and continues to 4pm, Sunday 17 August.

## Dialogue with nature

A photographic exhibition by Daisaku Ikeda

20 September - 12 October, 10am - 6pm, free entry.

Featuring scenes of flora, fauna and seasonal changes from many countries around the world, Dialogue with Nature captures the spirit and beauty of the natural environment through the medium of photography.

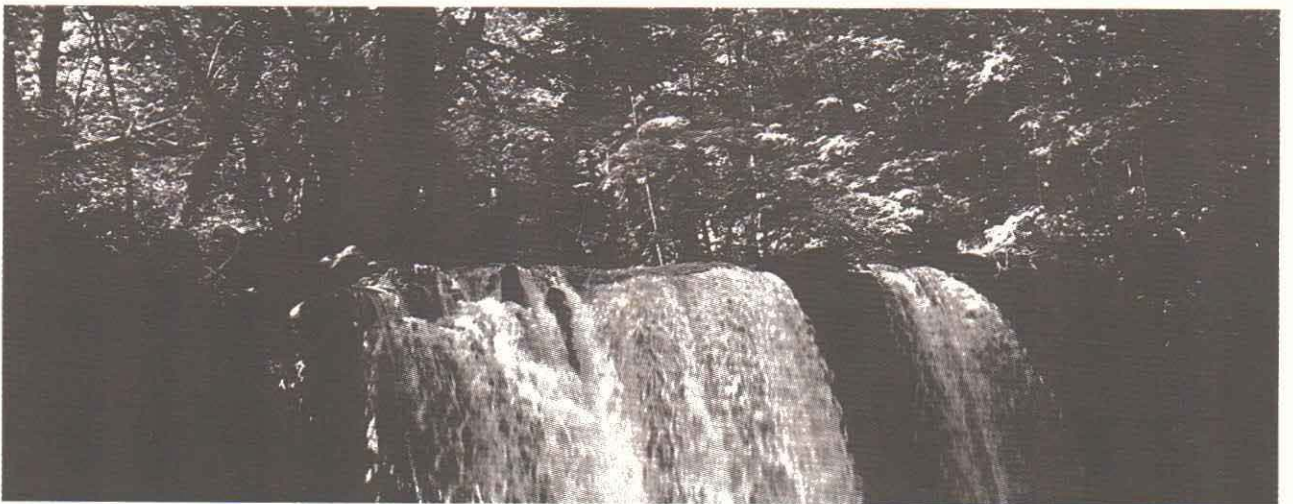
By contrasting landscapes and cityscapes and reflecting a brilliance of colours, Dialogue with Nature aims to deepen people's awareness of the beauty of their environment and to encourage them to look to nature as a source of inspiration.

The photographer, Daisaku Ikeda, is a philosopher, poet laureate and recipient of the 1983 United

Nations Peace Award. He is the President of Soka Gakkai International (SGI), a worldwide organisation founded on the Buddhism of Nichiren Daishonin. The aim of SGI is to promote peace through cultural exchanges and education.

Daisaku Ikeda travels the world constantly, engaging in dialogue with world leaders, scholars and cultural figures to deepen mutual understanding. He has also encouraged a wide variety of grass-roots cultural exchanges.

Dialogue with Nature is a collection of photographs taken during his travels for peace. It has been shown in more than 35 cities throughout the world over the past nine years.



## What's on at the Arts Complex

### Exhibitions

There is no admission charge to these exhibitions

**Melbourne Society of Women Painters and Sculptors**, an annual exhibition by one of Australia's oldest artists' societies, 4 - 17 August.

**David Dalgarno**, Australian landscape paintings which reflects the artist's travel and love for our land, 4 - 17 August.

**Morrie Gold Memorial Prize, Annual Jewish Art Competition**, the late Morrie Gold left a bequest to assist in promoting the interest and love for art among Jewish youth. The Shalom unit of B'nai B'rith have adopted this project. The competition is open to Jewish youth aged 11 - 18 years, 18 - 31 August.

### Gallery Hours:

**Monday - Friday**

10am - 5pm (except Tuesdays, 10am - 7pm)

### Weekends & public holidays

1-5pm

### Performances

**Humphrey B Bear in the 'Alphabet and Numbers Show'**, includes popular tunes: Humphrey works with 5 hammers, I'm a little teapot, 5 little ducks and ABC/123 - presented by Kids Promotions, 24 August. Bookings ph: 9563 8799.

**Magic Melodies presents Marion Martin** in concert, featuring Peter Jones on piano and pipe major John Young, 28 August. Bookings ph: 9557 5493.

**Jacaranda Theatre presents 'The Anniversary'**, by Bill MacIlwraith - an English black comedy directed by Jan Coulson, 28 August - 6 September. Bookings ph: 9562 9945.

## Society's 88th exhibition

The 88th Annual Exhibition of the Melbourne Society of Women Painters & Sculptors is to be held at the Glen Eira Arts Complex Gallery from 10am on Tuesday, 5 August to Sunday, 17 August.

The society was founded in 1902 by a group of former students from the National Gallery School, who shared studios and exhibited together. Today, the group has about 100 members each working in their individual styles.

A book on the society by art historian Juliet Peers, *More than just Gumtrees*, was published recently and will be available for sale during the exhibition.

## Have a cultural cuppa on us

Sundays in the Gallery began in July, when visitors to the Patchworkers and Quilters Guild exhibition were served a complimentary afternoon tea provided by the Arts Complex, while watching demonstrations by guild members. Hundreds attended the three-day display, many combining it with a visit to the National Gallery of Victoria's Amish Quilt Exhibition.

In August, participants of Hazel Edwards' fascinating workshop, *How to Write a Non Boring Family History*, enjoyed an afternoon tea and discussed what they had learnt in this popular workshop.

Over the coming months, demonstrations, discussions/ workshops and performances will be staged on the various Sundays.



# Needles and safety - a top priority

**G**len Eira's two community health centres and Council provide an invaluable preventative health service to residents through their needle/syringe exchange programs.

East Bentleigh Community Health Centre and Caulfield Community Care Centre have a needle/syringe exchange for intravenous drug users. They provide free needles and syringes, and a disposal container for their safe return.

The health centres also give out information on safe intravenous drug use and safe sex, and provide condoms. The service is confidential and they don't ask for any names.

Safe disposal services ensure that needles don't find their way into public places where children can find them and pick them up - a vital service for the health and safety of the whole community.

The Needle/Syringe Exchange Program (NSEP) is

part of the National HIV/AIDS strategy and is an effective HIV/AIDS education and prevention program.

Hepatitis B and Hepatitis C are far more easily transferred than HIV. Recent studies in Western Australia showed that 88 per cent of IV drug users attending a methadone program were infected with Hepatitis C. The long term effects can be cirrhosis of the liver and in some cases liver cancer.

Australia has one of the lowest rates of HIV spread in western countries, which is largely due to the prompt introduction and success of needle syringe exchanges combined with education.

Department of Human Services statistics show the HIV infection rate among IV drug users in Victoria is about 0.25 to 0.3 per cent. This compares to rates in Southern Italy (76 per cent), and the cities of Geneva (52 per cent), Edinburgh (51 per cent) and Bangkok (40 per cent).

Cooperation with police is important. The police often let the community health centres know when there are particularly strong batches of heroin in circulation.

Council also provides a sharps disposal service to residents who are diabetic (about 3.8 per cent of the Glen Eira population) and disposal units in public toilets.

**Opening hours of the exchanges are:**

**East Bentleigh Community Health Centre,**  
Gardeners Road, East Bentleigh, 8.30am - 4.45pm

**Caulfield Community Care Centre,**  
260 Kooyong Road, Caulfield, 8.30am - 5pm.

For details on the closest after hours service or pharmacies which sell needles, call DIRECT Line on 9416 1818 (24 hours).

## KIDS CHURCH PROGRAM

*Run by kids - for kids*

**August 30**

Join us for our Spring Breakfast at 8.30am and/or stay for the church program from 9.45am - 12noon.

A morning of lively singing, crafts, puppets and fun activities in a Christian environment.

### Bookings

Lil 9800 2578 (AH), Karen 9807 1652 (AH) or Colleen 9772 7927 (BH)

**Glen Huntly Adventist Community Church**  
99 Grange Road, Glen Huntly



*Marion Martin will be performing at Magic Melodies on 28 August.*

## Magic Melodies hit the right note

**T**he Magic Melodies daytime concert series in the Glen Eira Auditorium has been filled with great entertainment, fun, laughter, musical memories, smiling faces, warm atmosphere and the buzz of friendly chatter.

Since the opening show in April, the audience size has swelled to more than 500 people.

The next show is on 28 August, when you can see 'Flower of Scotland' Marion Martin present a concert of hits from stage and film, plus much loved Scottish songs.

Then in September, it is "Hits of Yesteryear 2", featuring the cast of the opening show in April, return to perform a completely new show.

For details on all the Magic Melodies concerts, see the advertisement on the back page of this issue of the Glen Eira News or phone Magic Melodies on 9557 5493.

## BUS TOURS

**Glen Huntly Friendship Group**

**14 August**

Historical films shown in "The Grange Room", 99 Grange Road, Glen Huntly.

10am-12noon, morning tea - cost \$1

**28 August**

Interesting and informative bus trip around Brighton with well-known historian Wilma Farrow in the character of Sir Thomas Bent. BYO Lunch.

Departs 10am, 99 Grange Rd - Cost \$15

Bookings: Margaret 9596 6124 or Ada 9596 2295

## Children's Fun Day 26 October

The Glen Eira Children & Family Services Network, in conjunction with Glen Eira City Council, will hold a Children's Fun Day at Princes Park (opposite Caulfield Recreation Centre), Maple Street, Caulfield South, on 26 October, from 1pm to 4pm.

### The aims of the day are to:

- Celebrate children and families in the City of Glen Eira.
- Provide a free, non-commercial day for children up to the age of twelve.
- Promote non-profit groups offering services to children and families in the City of Glen Eira.

Any community-based non-profit groups offering services to children are invited to participate by organising an activity.

**For further information contact**  
Judy Moylan on 9596 1481.

*Al Jolson,  
Benny Goodman,  
Vera Lynn, Glenn Miller*

**They're all on**

**GOLDEN DAYS RADIO**

**99.9FM**

**EVERY WEEKEND**

*Good old fashioned wireless*

**9572 1466**

**Advertise your  
INTERNET ADDRESS  
in the 'News'**

**This space costs just \$50**

# Council Rates 1997/98

## RUSSIAN

### ИЗМЕНЕНИЯ В ПРАВИЛАХ УПЛАТЫ МУНИЦИПАЛЬНЫХ НАЛОГОВ, ДЕЙСТВУЮЩИЕ С 1 ИЮЛЯ 1997 ГОДА

В настоящее время плательщики муниципальных налогов Муниципального района Glen Eira получают уведомления о налогах и сборах за 1997/1998 финансовый год. Эти налоги и сборы теперь взимаются за период с 1 июля 1997 года до 30 июня 1998 года. Предыдущий период был с 1 октября 1996 года по 30 июня 1997 года, только за девять месяцев.

Теперь муниципальные налоги в Муниципальном районе Glen Eira будут платиться только в четыре приема, в следующие дни:

- вторник 30 сентября 1997 года
- понедельник 1 декабря 1997 года
- понедельник 2 марта 1998 года
- понедельник 1 июня 1998 года

За месяц до каждого из этих дней каждому налогоплательщику будет послано напоминание. Вы по-прежнему можете воспользоваться возможностью заплатить налог заранее до 30 сентября 1997 года, но после этого дня все налогоплательщики (включая и тех, у кого налоги удерживаются напрямую с банковского счета) будут переведены на систему уплаты налогов в четыре приема. Проценты будут начисляться только на сумму, которую налогоплательщик будет должен после каждой из вышеуказанных дат.

Уплатить можно будет в любом банке. Вам не обязательно иметь счет в банке, в котором вы вносите плату. Банк "National Australia Bank" не взимает плату за перевод денег, а другие банки могут взимать такую плату. Можно также выслать плату по почте по следующему адресу:

Glen Eira City Council  
G P O Box 184C  
Melbourne 3001

В качестве другого варианта, для вашего удобства вы можете договориться об уплате муниципальных налогов с помощью системы удержания из банковского счета, в виде девяти равных ежемесячных выплат.

Если вы хотите поговорить с нами об этих вопросах, или если вы предвидите трудности в оплате своего счета, позвоните в Центр по обслуживанию населения Муниципального Совета района Glen Eira или в Отдел налогов и сборов (Revenue Office) по номеру 9524 3333.

## POLISH

### ZMIANY W SPOSOBIE OPŁATY PODATKÓW MIEJSKICH (COUNCIL RATES) OBOWIĄZUJĄCE OD 1 LIPCA 1997

Podatnicy na terenie Glen Eira otrzymują obecnie zawiadomienia o należnych podatkach miejskich i opłatach za rok finansowy 1997/1998. Opłaty te obejmują okres od 1 lipca 1997 do 30 czerwca 1998. Poprzedni okres opodatkowania rozpoczął się 1 października 1996 i zakończył 30 czerwca 1997, obejmując jedynie dziewięć miesięcy.

Podatki miejskie Rady Gminnej Glen Eira są teraz płatne jedynie w czterech ratach, w następujących terminach:

- Wtorek, 30 września 1997
- Poniedziałek, 01 grudnia 1997
- Poniedziałek, 02 marca 1998
- Poniedziałek, 01 czerwca 1998

Zawiadomienia przypominające o płatności będą wysyłane na miesiąc przed terminem uiszczenia każdej raty. Do 30 września 1997 roku można jeszcze skorzystać z możliwości przedpłaty, jednakże po tym terminie wszystkich podatników będzie obowiązywać ratalna metoda wnoszenia opłat (za wyjątkiem osób używających tzw. Direct Debit, czyli automatycznego odciążania opłat z konta). Wszelkie kwoty nie opłacone w obowiązującym terminie będą podlegały oprocentowaniu.

Wpłaty można dokonywać w każdym banku; nie jest konieczne posiadanie konta w banku, w którym wpłaca się ratę. Narodowy Bank Australijski (National Australia Bank) nie pobiera opłaty za przyjmowanie rat, ale w innych bankach wpłaty mogą nie być bezpłatne. Należną ratę można także opłacić listownie, na adres:

Glen Eira City Council  
GPO Box 184C  
MELBOURNE 3001

Dla wygody podatników istnieje także alternatywna metoda uiszczenia wpłat, w dziewięciu jednakowych miesięcznych ratach, odciążanych automatycznie przez system Direct Debit.

W celu przedyskutowania powyższych informacji, lub jeśli mogą zaistnieć problemy z terminowym opłacaniem rat, proszę się skontaktować z Wydziałem Usług Glen Eira (Glen Eira Service Centre) lub z Wydziałem Skarbowym (Revenue Office), pod numerem telefonu: 9524 3333.

## ITALIAN

### CAMBIAMENTI NEL PAGAMENTO DELLE IMPOSTE DAL 1 LUGLIO, 1997

I residenti di Glen Eira stanno per ricevere l'avviso di pagamento delle imposte comunali per l'anno finanziario 1997/1998. Questo copre il periodo che va dal 1 luglio, 1997 al 30 giugno, 1998. L'ultimo periodo andava dal 1 ottobre, 1996 al 30 giugno, 1997 e copriva soltanto nove mesi.

D' ora innanzi i residenti del Comune di Glen Eira potranno pagare le imposte comunali solo per mezzo di quattro pagamenti rateali da effettuarsi nelle seguenti date:

- Martedì, 30 settembre, 1997
- Lunedì, 1 dicembre, 1997
- Lunedì, 2 marzo, 1998
- Lunedì, 1 giugno, 1998

Il Comune invierà un avviso di sollecito ad ogni residente un mese prima della data di scadenza del pagamento rateale. Il pagamento anticipato si può effettuare fino al 30 settembre 1997, però dopo questa data tutti i contribuenti dovranno attenersi al metodo di pagamento rateale (ad eccezione di chi paga col sistema dell'Addebito Diretto). Si applica l'interesse su tutti gli arretrati.

I pagamenti si possono effettuare presso qualsiasi banca anche senza avere un conto corrente. La National Australia Bank non applica nessuna tariffa di trasferimento, ma le altre banche è possibile che lo facciano. Il pagamento si può anche inviare per posta al:

Glen Eira City Council  
GPO Box 184C  
MELBOURNE 3001

Alternativamente se vi è più conveniente potete prendere accordi per pagare le imposte in nove pagamenti mensili tramite il sistema dell'Addebito Diretto.

Se volete discutere le questioni di cui sopra, o se pensate di avere difficoltà per quanto riguarda il pagamento del conto, prendete contatto col "Glen Eira Service Centre" (Centro di Servizio di Glen Eira) o con il "Revenue Office" (Ufficio Imposte) al numero 9524 3333.

## GREEK

### ΑΛΛΑΓΕΣ ΣΤΙΣ ΠΛΗΡΩΜΕΣ ΤΩΝ ΔΗΜΟΤΙΚΩΝ ΤΕΛΩΝ ΑΠΟ ΤΗΝ 1η ΙΟΥΛΙΟΥ, 1997

Όσοι πληρώνουν δημοτικά τέλη στον δήμο Glen Eira λαμβάνουν τώρα ειδοποιήσεις για τα δημοτικά τους τέλη και επιβαρύνσεις για το οικονομικό έτος 1997/8. Οι επιβαρύνσεις αυτές καλύπτουν τώρα την περίοδο από την 1η Ιουλίου, 1997 μέχρι τις 30 Ιουνίου, 1998. Η προηγούμενη περίοδος για τα δημοτικά τέλη ήταν από την 1η Οκτωβρίου, 1996 μέχρι τις 30 Ιουνίου, 1997, για περίοδο εννέα μηνών μόνο.

Τα δημοτικά τέλη του δήμου Glen Eira μπορούν τώρα να πληρώνονται σε τέσσερις δόσεις μόνο, στις παρακάτω ημερομηνίες:

- Τρίτη, 30 Σεπτεμβρίου
- Δευτέρα, 1 Δεκεμβρίου, 1997
- Δευτέρα, 2 Μαρτίου, 1998
- Δευτέρα, 1 Ιουνίου, 1998

Θα σταλούν ατομικές ειδοποιήσεις υπενθύμισης ένα μήνα πριν από την προκαθορισμένη ημερομηνία πληρωμής κάθε δόσης. Μπορείτε ακόμη να προπληρώσετε ολόκληρο το ποσό μέχρι τις 30 Σεπτεμβρίου, 1997, εκμεταλλευόμενοι την εκλογή προπληρωμής, ωστόσο, μετά από την ημερομηνία αυτή, όλοι όσοι καταβάλουν δημοτικά τέλη, θα μπορούν να πληρώνουν τα δημοτικά τέλη μόνο με δόσεις (εξαιρουμένων των ατόμων που πληρώνουν μέσω του τραπεζικού συστήματος άμεσης πληρωμής (Direct Debit)). Σε περιπτώσεις καθυστέρησης πληρωμής των δημοτικών τελών μετά από την κάθε προκαθορισμένη ημερομηνία πληρωμής της δόσης, θα χρεώνεται τόκος.

Οι πληρωμές μπορούν να γίνουν μέσω οποιασδήποτε τράπεζας. Δεν χρειάζεται να έχετε λογαριασμό με την τράπεζα που θα κάνετε την πληρωμή σας. Η τράπεζα National Australia Bank δεν χρεώνει τραπεζικά έξοδα μεταβίβασης, αλλά άλλες τράπεζες μπορεί να σας χρεώσουν. Μπορείτε επίσης να ταχυδρομήσετε την πληρωμή σας στη διεύθυνση:

Glen Eira City Council  
GPO Box 184C  
MELBOURNE 3001

Διαφορετικά, για την εξυπηρέτησή σας, μπορείτε να κανονίσετε να πληρώσετε τα δημοτικά τέλη σε εννιά ισόποσες μηνιαίες πληρωμές μέσω του τραπεζικού συστήματος άμεσης πληρωμής (Direct Debit).

Για να συζητήσετε οποιοδήποτε απ' αυτά τα θέματα, αν προβλέπετε δυσκολίες με την πληρωμή του λογαριασμού, επικοινωνήστε με το Κέντρο Εξυπηρέτησης του Δήμου Glen Eira ή Το Γραφείο Εσόδων στον αριθμό 9524 3333.

## CHINESE

### 從1997年7月1日開始的 市政稅收方面的變化

格蘭·艾拉(Glen Eira)市目前正在向納稅人發送通知,告知他們1997/98財政年度的地方稅和收費情況。這些收費包括的是1997年7月1日到1998年6月30日這段時間。上一次的收費時間是從1996年10月1日到1997年6月30日,祇有九個月時間。

格蘭·艾拉市(Glen Eira)市政廳的地方稅現在分四次付款,日期如下:

- 1997年9月30日星期二
- 1997年12月1日星期一
- 1998年3月2日星期一
- 1998年6月1日星期一

每次分期付款到期以前一個月市政廳會分別寄出提醒通知。您在1997年9月30日以前一直都可以使用預付選擇,然而,在這個日期之後,所有的納稅人都必須按照分期付款方式付款(屬於直接付賬系統的人士除外)。超過每個規定日期之後,所欠款項都需要支付利息。

款項可以在任何銀行支付。您支付時,不一定非要在銀行中開有戶頭。國立澳大利亞銀行不收取轉帳費,其他銀行可能會收取。您也可以把付款寄到:

Glen Eira City Council  
GPO Box 184C  
MELBOURNE 3001

另外一個辦法是,為了您方便起見,您可以通過直接付賬系統,把地方稅平均分成九個月來進行支付。

要討論以上事項,或者您認為支付這些款項有困難,請與格蘭·艾拉市服務中心或者稅務辦公室聯繫,電話9524 3333。

## HEBREW

### שינויים בתשלומי ארנונה (מיסי-עירייה) מ 1 ביולי 1997

בימים אלה מקבלים משלמי המיסים ב-Glen Eira הודעות על שיעור החיובים הארנונה לשנת הכספים 1997/1998. החיובים מכסים את התקופה מ 1 ביולי, 1997 עד 30 ביוני, 1998. השומה האחרונה היתה מ 1 באוקטובר, 1996 עד 30 ביוני, 1997, תקופה של תשעה חודשים בלבד.

ניתן לשלם את הארנונה למועצת Glen Eira בארבעה תשלומים בלבד בתאריכים הבאים:

- יום שלישי, 30 בספטמבר, 1997
- יום שני, 1 בדצמבר, 1997
- יום שני, 2 במרץ, 1998
- יום שני, 1 ביוני, 1998

תזכורת אישית תישלח תודש לפני תאריך התשלום. באפשרותך לבצל את אופציית התשלום מראש עד 30 בספטמבר, 1997, אולם אחרי תאריך זה כל משלמי המיסים ישובו בשיטת התשלומים (למעט אנשים המשלמים בשיטת החיוב הישיר). ריבית תחוייב על כל איחור בתשלום אחרי כל אחד מתאריכים הנקובים.

ניתן לשלם בכל בנק אינך חייב/ת להיות בעלת חשבון - בנק בבנק בו הינך מבצע/ת את התשלום. The National Australia Bank לא יחייב אותך דמי העברה. בנקים אחרים עלולים לחייבך. כמו-כן באפשרותך לשלוח בדואר את התשלום ל:  
Glen Eira City Council  
G P O Box 184C  
MELBOURNE 3001

לחילופין לנוחותך הינך יכול/ת להסדיר את תשלום המיסים בתשעה תשלומים חודשיים שווים בשיטת החיוב הישיר.

אם ברצונך לדון בנושאים הנ"ל או אם הינך תוה קשיים בתשלום חשבונך, התקשר/י למרכז השירות של Glen Eira או למשרד הגבייה בשלפון 9524 3333.



# Doing Business

Focussing on the traders, businesses and workforce of Glen Eira.

Doing Business

## Home Business Seminar - don't miss it!

**Tuesday 19 August at 7pm  
Glen Eira Town Hall Theatrette**

**H**ome business today is big business, with over 343,000 Australians currently working from home. Home business is a rapidly growing sector of the SOHO (Small Office Home Office) market. It not only offers a unique way of doing business but a unique way of blending your business and private life... and peak hour traffic becomes a thing of the past!

Someone who has successfully worked from home for the past 16 years is local resident Peter Schmideg, author of *Your Guide to Working From Home - Getting Started, Getting Motivated, Getting Business* (Harper Collins). This book gives the reader an excellent insight into many different aspects of working from home from setting up your office, to dealing with isolation, to choosing the right technology.

There are possibly a few thousand home businesses in the City of Glen Eira, and with this in mind, the Council, in conjunction with Peter Schmideg is running a unique seminar for and about home business. There will be a number of guest speakers including an accountant, an insurance specialist, an internet service provider, a representative from Glen Eira Council, and of course Peter Schmideg.

You'll learn about:

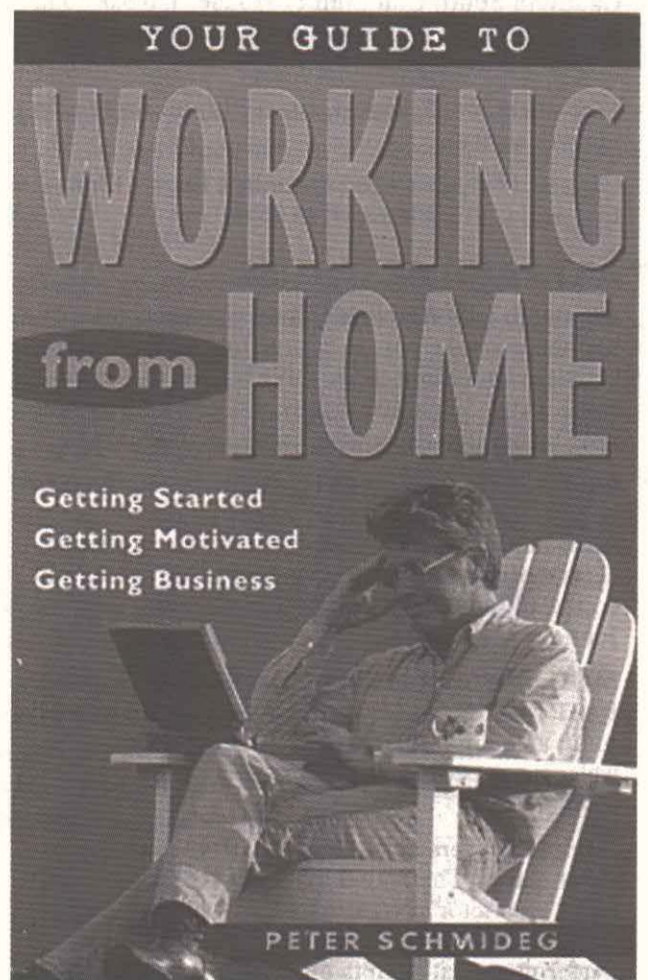
- Insurance, home business and self-employment
- Accounting and tax planning for home business
- How the internet can help your business
- What council expects of home business
- How to maximise your time and find out why home business is a lifestyle choice
- The most common mistakes home business owners make

Andrew Millen, Council's Business Development Planner, believes that this is an important initiative that underlines the Council's support for home business.

As they say, that's not all. The admission fee also includes a copy of Peter's book (valued at \$16.95). Books and receipts can be collected from the registration desk on the evening of the seminar. The question isn't so much can you afford to go, but can you afford not to go?

Some comments about *Your Guide to Working From Home*:

"A clear and informative read" *The West Australian*,  
 "...captivating and anecdotal style..." *Canberra Times*  
 "...each page if full of wisdom...a most entertaining book" *Mac User Group Magazine*



### Home based business evening program

|                |   |
|----------------|---|
| 7.00pm         | Registration (tea & coffee)   |
| 7.20pm         | Welcome by Mayor, Alan Grossbard  |
| 7.30pm         | <b>Peter Schmideg</b><br>Author: <i>Your Guide to Working From Home</i>   |
| 8.00pm         | <b>Sam Laser</b><br>Sam Laser & Co Accountants                            |
| 8.20pm         | <b>Angela Wilde</b><br>Manager Special Projects<br>Ozemail Limited        |
| 8.40 - 9.00pm  | Break   |
| 9.00pm         | <b>Don McLardy</b><br>Insurance Australia Broking Pty Ltd                 |
| 9.20pm         | <b>Andrew Millen</b><br>Business Development Planner<br>Glen Eira Council |
| 9.30 - 10.00pm | Panel Discussion<br>Chaired by Peter Schmideg                             |

Home Business Seminar proudly supported by:-



INSURANCE AUSTRALIA  
BROKING PTY. LIMITED



Training & Motivation

### Registration Form

Yes, please reserve a place and a free book for me at the Glen Eira Home Business Seminar.

Date: Tuesday 19 August  
 Place: Glen Eira Town Hall Theatrette  
 Time: 7pm

Early Bird booking \$55 per person if payment is received by Friday 15 August

Tickets available at the door for \$60

Name: \_\_\_\_\_

Address: \_\_\_\_\_

Contact No.: \_\_\_\_\_

Number of tickets required: \_\_\_\_\_

I have enclosed a cheque for \$ \_\_\_\_\_

Registration fees are non-refundable. Please make all cheques payable to City of Glen Eira. Send this coupon and your cheque to:

**Andrew Millen**  
 Glen Eira City Council  
 PO Box 42, Caulfield South 3162  
 9524 3384

# Community Diary | COMMUNITY DIARY

## MEETINGS & COURSES

**Godfrey Street Community House**, 9 Godfrey Street, Bentleigh, is hosting an accredited 50-hour course in Community Development, covering topics such as leadership, managing staff and finances, and marketing. Child care available. Contact Shirley on 9557 9037.

**Caulfield South Community House**, 450 Kooyong Road, Caulfield South, is offering singing and drama classes. Develop confidence and have fun.

Free workshop: 5 August, 10am - 12pm. Bring along ideas & wants.

Classes: 12 August - 16 September, 10am - 12pm, five weeks. \$12. Phone: 9596 8643.

## ARTS AND ACTIVITIES

**Bentleigh Life Activities Club** welcomes new members to take part in a large range of recreational activities including cards, table tennis, carpet bowls, coach trips, dine outs, theatre, craft and many more. For further details contact Frank on 9583 7355.

**Caulfield Writers Group** offers writers of all ages an opportunity to meet fortnightly to read and workshop their work. If your interest is in writing short stories, poetry, short or long prose pieces and you would like to visit us or join the group, phone John on 9889 7922.

**McKinnon Scrabble Club** meets at 100 Wheatley Road, McKinnon (Marriott House) every Thursday night at 7.30pm. Players of all standards are welcome, especially beginners. Details: Lesley Mack 9578 6767.

**Adelphi Players at "Labassa"** will present three short plays; "The Signal Man", "The Chorus Girl" and "The Actor's Nightmare", 8 Manor Grove, Caulfield North on Sunday 24 August with two performances at 2.15pm and 7.15pm. Entry \$12 (concession \$10). Bookings: 9690 1593.

## VOLUNTEERS

**Do Care Volunteers** are urgently needed to offer ongoing companionship and support to socially isolated people living locally. Please telephone Do Care on 9532 8499 for further information.

**Foster Care South East** - Interested in becoming a foster parent? Training sessions will be held 5 August and 9 August. Details: 9562 9966 during business hours.

**Southern Citizen Advocacy** - Your ability to handle everyday matters would assist an adult with a disability to participate in community life. Short orientation program begins soon. Inquiries: 9576 0155.

## COMMUNITY HEALTH

**Lupus Support Group** for patients, families and friends is held on the third Sunday of the month in Caulfield. The next meeting will be on 31 August at 2.30pm. Please contact Enid on 9509 2735.

**Monash Medical Centre** reminds women of the importance of having a breast scan or mammogram regularly. Free Monash BreastScreen mammograms are available at screening centres throughout the community. Call 13 20 50 for an appointment.

## CHILDREN & FAMILY SERVICES

**Copelen Child & Family Services** will be conducting the following Parent of Adolescent Seminar Evenings covering: 'Drugs & Health' on 4 August and 'Sexual Abuse during the Teenage Years' on 1 September. A Parenting Group for Fathers also starts late August for 6 weeks. Booking and inquiries can be made on 9521 5666.

**The Nursing Mothers' Association of Australia - Caulfield Group** will discuss "Recognising / Treating Childhood Illness" at the next meeting at 8pm on Monday 4 August. Details ring 9568 1058. A coffee morning will be held on Friday 22 August at 9.30am. Details ring 9578 0628.

## OPEN DAY

**Historic "Box Cottage"** Joyce Park, Jasper Road, McKinnon. The cottage will be open on Sunday, 31 August, 2pm to 4.30pm with a display of pioneer memorabilia. Mr R Lawson will be guest speaker. Donations 50c to Moorabbin Historical Society. Phone 9578 7060 for further information.

## RELIGIOUS ORGANISATIONS

**St. Agnes' Anglican Church** celebrates Holy

Eucharist each Saturday at 6pm at 116 Booran Road, Glen Huntly. All welcome. Vacancies also exist for Youth Group and Kids' Club which meet on Sundays. Inquiries: Cath Britton on 9563 2327.

## MUSIC

**Glen Eira City Choir** will perform "Choral Kaleidoscope" on Sunday 24 August at 2pm at St Stephen's Uniting Church Hall, 158 Balaclava Road, Caulfield North. The choir will perform opera chorus, songs from the stage, as well as familiar and well loved folk songs. For ticket details, phone 9523 6523 or 9532 4318.

**St Agnes' Music Festival**, hosted by St Agnes' Anglican Church, 116 Booran Road, Glen Huntly, will run from 14-17 August. Inquiries: phone 9563 2327.

## SPORTS

**McKinnon Basketball Association** is looking for new teams and players. It has competitions in: Mens: "Classic" (A Grade) - Sundays; B Men's - Mondays, and Over 35's - Wednesdays; Women's: Open age on Tuesday nights; Junior Boys: U/11's, U/13's, U/15's, U/16's & U/18's; Junior Girls: U/12's & U/14's; Ozball (5 to 10 year olds) and Biddyball. Contact Bob Mann on 0417 393 207.

## DEADLINE FOR THE NEWS

Editorial contributions and advertisement bookings are welcome for the *Glen Eira News*.

The next issue of *Glen Eira News* will be released on 2-4 September. The deadline is **Monday 11 August**.

Advertising rates are available on application.

Contacts: Paul Freestone (editorial listings) 9524 3431, Rosanna Verde (advertising), on 9524 3287.

## USA BUS TOURS

**20 August** Gumbaya Park including BBQ coffee/tea and lots of Roo's to pat - cost \$25

**17 September** Variety on Parade, Warburton. Top class stage show, includes lunch - cost \$32

**17 - 20 November** 4 days - 3 nights, Grand tour to Lakes Entrance, Mt Hotham & Lake Eildon - includes 2 cruises, Buchan Caves. Highlight visit to art studios including the famous artist, Anne Mieke Mein. Includes hot breakfast, lunch & dinner - cost \$365 twin share (single supplement \$66)

Contact office  
**9532 8462 or 9523 7862**  
for bus trip list and pamphlet for all trips.

## BLADDER PROBLEM?

**LEAKAGE, POOR CONTROL, FREQUENCY, URGENCY**

**PERSISTENT BED WETTING**

**DECREASED SEXUAL FULFILMENT? DUE TO WEAK PELVIC FLOOR MUSCLES**

Advanced neuro muscular stimulation strengthens pelvic floor muscles and settles bladders.

High success rate with a discreet home-based treatment that you control. No drugs involved.

Consulting East Bentleigh and Berwick

**Sister Dorothy Stevens, Control Health Services, Phone 9563 8299**

Member of Continence Foundation and Royal College of Nursing Australia.

## Magic Melodies

**Marion Martin Daytime Concerts**



Special guest artist at the Bicentennial Carols by Candlelight, sang to an audience of 160,000 at the Flemington Racecourse when Pope John Paul II was in Melbourne, plus sell-out concerts at the Melbourne Concert Hall. Marion is a stunning and enchanting performer, blessed with a three octave vocal range and a gorgeous personality. This concert will be a blend of world famous songs, hits from stage and film, plus the much loved Scottish songs.

'This dynamic and exciting show will be a series highlight'.

GLEN EIRA ARTS COMPLEX AUDITORIUM  
CORNER HAWTHORN & GLEN EIRA ROADS,  
CAULFIELD SOUTH

'SHOWS INCLUDE COMPLIMENTARY  
MORNING OR AFTERNOON TEA'

August and September shows

|              |                        |               |
|--------------|------------------------|---------------|
| 28 August    | "Marion Martin"        | 11am & 1.30pm |
| 25 September | "Hits of Yesteryear 2" | 11am & 1.30pm |

### COST OF TICKETS

Individual tickets \$9  
Groups (10 plus) \$8

BOOKINGS & INFORMATION: contact (03) 9557 5493

"Organise a few friends and book now for Marion Martin and Hits of Yesteryear 2"

## BOOKING COUPON

I would like to attend

Please tick: Number of tickets per show:

- Thursday 28 August AM \_\_\_\_\_  
Show 2 - "Marion Martin" PM \_\_\_\_\_
- Thursday 25 September AM \_\_\_\_\_  
Show 3 - "Hits of Yesteryear 2" PM \_\_\_\_\_

Name: \_\_\_\_\_

Address: \_\_\_\_\_

Amount \$ \_\_\_\_\_

(cheques payable to "Magic Melodies")

Post to: Magic Melodies,  
PO Box 456, Bentleigh, 3204