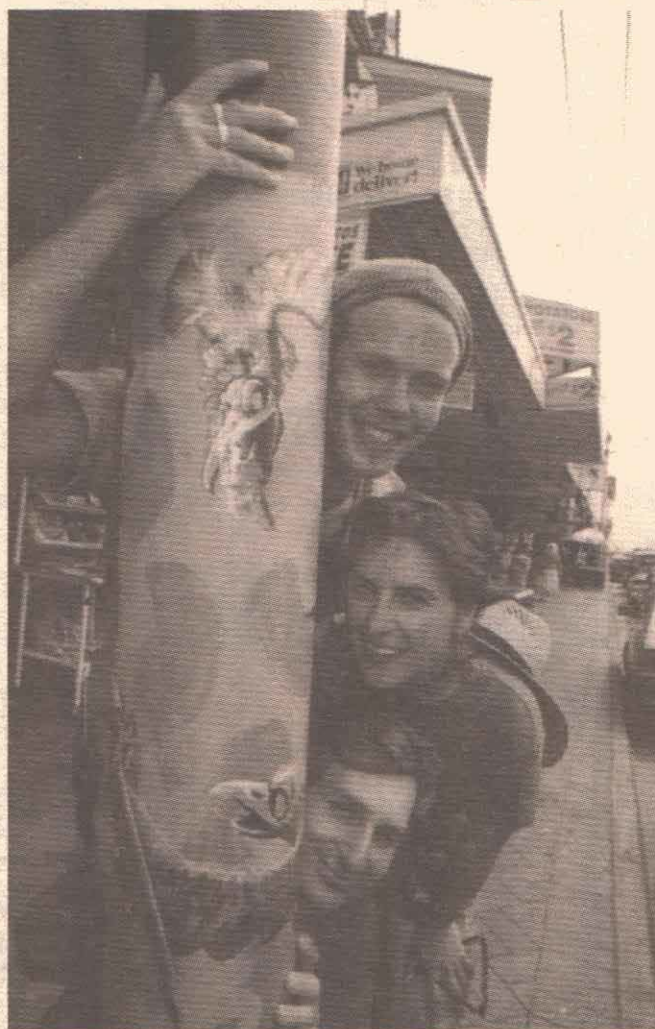


Glen Eira News

Glen Eira City Council, corner Hawthorn and Glen Eira Roads, South Caulfield 3162
Phone: 9524 3333 Fax: 9523 0339

Bringing art to the people



An Elsternwick Main Street Committee initiative to brighten the Glen Huntly Road shopping centre has given budding artists an opportunity to display their work.

Artist Scott Jansen was commissioned to decorate the 60 PTC poles lining the street. Spokesperson for the committee Sara Jones said the project had been a resounding success.

"It's been a great PR exercise for the shopping centre, people have been stopping along the way to talk to Scott as he worked. Asking him about the project, why he's doing it and so on," she said.

Sara said the committee had received positive feedback from large numbers of shoppers who have expressed their appreciation for the committee's (and Scott's) work.

Although the project brief was simply to decorate the poles with original artwork, Scott took the task to the extreme. Rather than designing ten or a dozen images and

repeating them alternately along the strip, Scott has endowed each pole with its own distinctive design.

"I wanted each pole to be quite different and to have its own identity, inspired by its immediate surroundings, while still being representative of the whole centre," he said.

He said one of the joys of the project had been the chance to bring the process of creating art to people. Art, he said, was a powerful media which evoked deep feelings and most people did not get the opportunity to talk to an artist or observe the creative process.

"Until this project, I'd never really thought about other people's perception of how art is created. Usually, they just see the finished product," he said.

Sara said getting the project off the ground had been a frustratingly long process. Permission had to be sought from the PTC (who actually own the poles) United Energy (who use the poles) and Glen Eira City Council.

The project was generously sponsored by Penhalluriack's Building Supplies, Glen Eira City Council, StreetLIFE, and Rough Sketch.

(Top to bottom) Artist Scott Jansen and co-artists Doris and Frey pictured with just one of the 60-odd artworks now lining Glen Huntly Road.

New Service Centre opens

Glen Eira City Council is delighted to announce the establishment of the Glen Eira Service Centre at Bentleigh Library.

The partnership between the Library and the Service Centre will provide a 'one-stop shop' for local people wishing to transact their Council business without having to travel to the town hall during regular business hours. Residents of Bentleigh and surrounds can enjoy the convenience of their Council coming to them.

The new Service Centre at Bentleigh Library is now open 10am to 9pm Monday to Friday and 9am to 4pm Saturday, and staff are fully trained to provide all counter services to residents, apart from taking money.

An added benefit of the evening service is that calls to the main Service Centre at the town hall after closing time will be diverted to the Bentleigh desk, expanding Council accessibility for the whole community.

The Service Centre at the town hall handles 1000 calls or visits each day.

The Bentleigh Service Centre was launched by Mayor Cr Alan Grossbard on Monday 16 February, assisted by Cr Russell Longmuir, and Cr Barry Neve.

Cr Grossbard said: "Good service to residents is a top priority of Council. The Service Centre in the town hall currently handles 1000 calls or visits each day, and now it has expanded its service to Bentleigh Library, a major Council facility where there are 30,000 visits made by residents each month."



Mayor Cr Alan Grossbard (centre) and the Glen Eira City Council Service Centre staff - ready to take calls and inquiries at Bentleigh Library.

Senior Citizens' Week

To launch this year's Senior Citizens' Week, the Greek Senior Citizens' Club of Glen Eira invites residents to a traditional Greek luncheon on Tuesday, 10 March. This fully catered lunch will include great music and dancing. Cr Alan Grossbard, Mayor of Glen Eira will officially open Senior Citizens' Week at 12 noon. Senior Citizens Week activities in Glen Eira run until 27 March.

**Full
program
see
Page 4.**

Mayor's Column



Maintaining our friendly sister city relationship

During my recent visit to Ogaki, Japan, I was able to secure the offer of a \$20,000 sponsorship from our sister city to help build a Japanese-style Tea House in one of our parks. This project would bring more people into our parks to enjoy the City's beauty throughout the year. Ogaki Mayor Mitsuru Ogura also assured me he will send artwork, artists and dancers to support the Japanese festival proposed for later this year, to celebrate 10 years of association between our Cities.

International exhibition: a first for Australia

I have initiated discussion with a world wide organisation named Soka Gakkai International to bring to Glen Eira their internationally renowned photographic exhibition called *A time to remember*. It has been displayed in more than 60 countries but never in Australia. It would be a coup for us and Melbournians to show this famous 'peace inspired' exhibition.

How one year flies

It is hard for me to imagine that it is a year since I was installed as the first Mayor of Glen Eira.

As a full time Mayor, I was accessible to the community at all times and during my term have been able to initiate and help develop many projects with the support of Council and the community.

The following projects and initiatives were achieved:

- the development of a Corporate Plan 1997 - 2000, a Municipal Strategic Plan reflecting community priorities,
- development of a \$54M budget, with spending of more than \$10M in restoring our community infrastructure (roads, drains, paths, parks),

- establishment of six advisory committees with community representation,
- establishment of a home for U3A; reconstruction of swimming pools and re-opening of East Boundary Pool; development of Glen Eira Memorial Park along Kooyong Road; upgrading of our library facilities; and the achievement of industry leader for the Service Centre,
- public discussion on redeveloping and upgrading facilities at Princes Park and Maple Street, and
- the development of arts and cultural programs to entertain our community.

Yet Glen Eira City Council remains one of the lowest taxing Councils in Victoria with a rate rise of only 2.1 per cent.

As Mayor I have:

- distributed \$300,000 worth of community grants,
- rewarded 135 residents with community services awards, and
- naturalised more than 900 new Australians who live in our city.

We can all be very proud of our City of Glen Eira.

Thank you for your support

During my Mayoral year, my wife and I have met so many people and I must say everyone has been wonderful to us. We really appreciated your support and kindness. Thank you.

I remain at your service as a Councillor not only for Orrong Ward but for the whole city of Glen Eira.

I wish each and everyone of you the best of everything in the years ahead and hope you will continue to regard Glen Eira as the most liveable municipality in Melbourne.

— Alan Grossbard, MAYOR

Councillor contacts

ORRONG WARD



Cr Noel Erlich

Ph & Fax: 9533 0054 (H)
Mobile: 0412 218 485



Cr Alan Grossbard

Ph: 9524 3225 (Council)
9533 0052 (H)
Fax: 9524 3358

JASPER WARD



Cr Russell Longmuir

Ph: 9557 4438
Fax: 9557 8717



Cr Barry Neve

Ph: 9524 3225 (W)
Fax: 9563 9403 (AH)
Mobile: 0412 218 468

MACKIE WARD



Cr Norman Kennedy

Ph: 9564 8395
Fax: 9564 8402
Mobile: 04 1937 9540



Cr Veronika Martens

Ph/fax: 9579 7072 (H)
or 9579 0297 (H)
Mobile: 0412 218 474

Glen Eira City Council

PO Box 42 Caulfield South 3162

Phone: 9524 3333

Fax: 9523 0339

Email: mail@gleneira.vic.gov.au

Internet: <http://www.gleneira.vic.gov.au>

SNIPPETS

Are you enrolled to vote?

Staff from the Australian Electoral Commission will be visiting all properties throughout Glen Eira between February and May this year to check that voters' details on their electoral rolls are up to date.

Times for the visits will range from 8am to 8pm Mondays to Saturdays and 10am to 6pm Sundays. Representatives from the AEC will be wearing identity cards.

If you are unsure whether you are enrolled for your current address, speak to the AEC staff or call your local federal electoral office on 13 23 26.

Suburb name changes - update

The Victorian Place Names Committee was expected to be meeting in mid February to consider its proposal to define all suburb boundaries within Glen Eira. The Committee invited further community comment throughout November and December last year, following Council's own consultation in mid 1997.

We do not know whether the Committee was to adopt a final model at their meeting at press time. Watch out for the April Glen Eira News for further information.

Dog and cat registration

Pet owners are reminded that they must register their dogs and cats with Council by 10 April each year. Fees for the 1998 - 99 year will be as follows:

Cats:

Sterilised	\$17
Non-sterilised	\$53
Over 10 years	\$17
FCC/Reg. breeder	\$17
Micro chipped non-sterilised	\$17
Pensioner (sterilised cat)	\$6
Pensioner (non-sterilised cat)	\$26.50
Domestic animal	\$17

Dogs:

Sterilised	\$26
Non-sterilised	\$78
Over 10 years	\$26
VCA/Working dog	\$26
Micro chipped non-sterilised	\$26
Pensioner (sterilised dog)	\$10
Pensioner (non-sterilised dog)	\$39
Obedience trained	\$26
Dangerous dog	\$260

Domestic Animal Business Registration \$155

DEADLINE FOR THE NEWS

Editorial contributions and advertisement bookings are welcome for the *Glen Eira News*.

Please submit material at the beginning of the month prior to the issue in which you wish it to appear.

The next issue of *Glen Eira News* will be released on 2-4 April. The deadline is **Monday 16 March**.

Advertising rates are available on application.

To submit editorial material for consideration, fax 9523 0339, email on mail@gleneira.vic.gov.au or write to PO Box 42, Caulfield South 3162.

Quick Quiz No. 5

Which is the largest municipal ward in population in Victoria? Answer page 11.

The information in this publication is of a general nature. The articles contained herein are not intended to provide a complete discussion on each subject and/or issues canvassed. While the information contained herein is believed to be correct, no responsibility is accepted for the accuracy of any article and/or any matter which is discussed herein. The Glen Eira City Council does not accept any liability for any statements or any opinion, or for any errors or omissions contained herein.

Young people – our stars

The talents of young people were a highlight of this year's Australia Day Breakfast at Glen Eira Town Hall on 23 January. Nehama Patkin's Young Musicians of Excellence entertained the breakfast's largest gathering ever, presenting delightful performances with piano, trumpet, violin, song and much more.

Making the early morning meal for more than 200 people run smoothly were the dedicated students from Glen Eira College, who went through special hospitality training with members of the Caulfield Rotary Club for the event.

Pam Rivers was presented the Glen Eira Citizen of the Year award at the breakfast, while guest speaker was former Victorian premier Lindsay Thompson. The breakfast was hosted by the Caulfield Rotary Club and Glen Eira City Council.

A Young Citizen of the Year award was not presented this year. Council is keen to receive nominations for the 1999 award. If you know an outstanding young person who deserves recognition, please look out for more information on the awards in the Glen Eira News later this year.

Glen Eira Citizen of the Year Pam Rivers with Lindsay Thompson and Mayor Cr Alan Grossbard.

(Below) Nehama Patkin's Young Musicians of Excellence.



Young people

Strategic health plan approved

Glen Eira City Council's Strategic Health Plan, which identifies public health priorities for the next three years, has been approved.

The plan identifies key public health issues in the City of Glen Eira within the context of state and national issues, and develops a strategic response to each. The plan also aims to develop ways to monitor and evaluate the strategies and programs and to clarify Council's role in planning and co-ordination for public health.

Reform of the Victorian public health legislation in 1988 expanded the role of Local Government into local health planning. Councils are required to produce Municipal Public Health Plans and Glen Eira has been well served by a Steering Committee representative of key health care providers in the municipality.

The committee has worked through the process of identifying and assessing actual and potential public health dangers and the resulting plan proposes five strategies, as follows:

- holding public health forums to enable a level of co-ordination to occur across the municipality,
- mapping of public health services,
- "care in place" – supporting older people in their own homes,
- prevention of falls in the 55 plus age group, and
- research into incidence of falls by young females and diseases and disorders of infants.

The Steering Committee plans to involve a broad range of health care providers in implementing the strategies and addressing issues of mutual interest in order to improve health care in the municipality. Council will provide facilitation and support in addressing the issues identified in the plan.

The plan also reflects the goals of Council's Corporate Plan – to be a living document to which all health providers are committed. The plan will be continually reviewed and updated to reflect the changing priorities of the community.

For any further information about the Health Strategy Plan, contact Michelle Hollingworth on 9524 3484.

Caulfield lake concern

Over the last few weeks the discovery of a large number of dead ducks in Caulfield Park has prompted concern about the state of the water in the lake. To date more than 80 dead ducks have been discovered.

Council responded to the discovery of the ducks by posting signage warning of the possibility of contamination and advising residents to keep clear of the lake.

Tests are being carried out by Park Services Environmental Health Department and the Murrumbena Animal Shelter with the Department of Natural Resources and Environment.

The cause of death for the ducks has not yet been established as Council is still awaiting the results of tests carried out on the lake itself.

Glen Eira Director of City Services Jim Mackinnon said the reason for the deaths was probably botulism which can be caused by a toxin produced by the bacteria *clostridium botulinum*. This bacteria grows in rotting vegetation and may have been accelerated by the hot dry summer reducing the water level of the lake.

Mr Mackinnon said once the results of the tests have been received the appropriate measures would be taken to return the area to a safe environment for both animals and humans.

URBAN ANIMAL MANAGEMENT

Council is currently reviewing the 'Dogs on Leash' Policy as there have been a number of concerns regarding dogs in parks raised by various groups and individuals.

The community is invited to comment on this important issue so that Council can address both the needs of the dog owners and other members of the community. The review will address responsible dog

ownership, when and where dogs should be on leash, when and where dogs may be exercised off a leash, and collection of dog faeces.

Input in the development of the policy will be received from the public, animal welfare organisations and dog experts.

Comments for the policy review are to be forwarded to the Recreation Section, PO Box 42, Caulfield South 3162 by 3 April 1998.



REDEVELOPMENT AND OPERATION OF RECREATIONAL INFRASTRUCTURE

CITY OF
GLEN
EIRA

PRINCES PARK AND MAPLE STREET, SOUTH CAULFIELD

The City of Glen Eira invites Expressions of Interest for the redevelopment of the recreational infrastructure at Princes Park and Maple Street, Caulfield South.

Potential proposers may avail themselves of explanatory detail and guidelines from Recreation Development, City of Glen Eira, PO Box 42, Caulfield South, Vic, 3162. Telephone 9524 3470.

These Expressions of Interest are merely the first stage in Council's consideration of its options for Princes Park and Maple Street. The Council reserves the right not to proceed with any or all proposals. Ultimately any accepted proposal would be subject to community comment and formal planning application.

Closing date Friday 27 March 1998

SENIOR CITIZENS' WEEK 1998

Age – a new adventure

10 March – 27 March 1998

TUESDAY 10 MARCH

GREEK TRADITIONAL LUNCHEON & DANCING

Hosted by Greek Senior Citizens Club of Glen Eira.
Official Opening 10.30am to 2pm Cost: \$10
Moorleigh Community Village
Bookings: Vicki 9576 4058 or Michael 9584 7817

FRIDAY 13 MARCH

CRAFT EXHIBITION AND TRIVIA AFTERNOON

Hosted by U3A Moorleigh. Exhibition of garments by Margaret Furness. Followed by lunch and trivia quiz.
Exhibition 10am to 12noon, Moorleigh Community Village
Cost: Exhibition Free. Lunch/Trivia \$5
Lunch bookings needed by 10 March
Contact: Joan McEwan 9570 3929 b/h 9596 3541a/h

SATURDAY 14 MARCH

SOCIAL AFTERNOON & SPIT ROAST

Hosts: East Bentleigh Senior Citizens Club.
Spit roast luncheon, dancing, games, and afternoon tea.
11.45am Cost: \$7, 1 Derry Street, East Bentleigh
Bookings req'd: Gwen Brown 9579 4573

SUNDAY 15 MARCH

LAWN BOWLS OPEN DAY

Hosts: Caulfield Park Bowls Club. 10am FREE
Caulfield Park Bowling Club
Opp. 255 Balaclava Road, Caulfield
Bookings req'd: Gerald Isaacs 9509 7282

SUNDAY 15 – SUNDAY 22 MARCH

AGE OF DISCOVERY AT THE GLEN EIRA LIBRARY & INFORMATION SERVICE

Explore the Internet and the Online Public Access Catalogue. Free reservation of library materials

Staff-assisted use (limited to Seniors Card holders).
"Tunes, Titles and Tea" Enjoy a musical morning, browse the latest titles and enjoy morning tea.

Tuesday 17 March
10.30am Bentleigh Library 9557 8278
Friday 20 March
10.30am Caulfield Library 9532 9466

"Cuppa and Chat" Join library staff for morning tea and browse some of the latest books.

Wednesday 18 March 10.30am
Carnegie Library 9530 4185
Thursday 19 March 10.30am
McKinnon Library 9576 8397 and
Elsternwick Library 9532 9321

MONDAY 16 – FRIDAY 27 MARCH

CELEBRATING CREATIVE ACHIEVEMENTS OF SENIOR CITIZENS

Hosts: East Bentleigh Community Health Centre.
Exhibition of local seniors' art & craft works.
9am – 5pm FREE, East Bentleigh Community Health Centre, Gardeners Road, E. Bentleigh
Contact: Danice Kuzmic 9579 2393

MONDAY 16 MARCH

COME'N TRY SOCIAL CARDS (HALF PRICE)

Hosted by Glen Eira City Council. Afternoon tea incl.
Solo or Canasta, 12noon – 4pm
McKinnon Hall, McKinnon Rd, McKinnon, Cost: \$1.25
Solo or Crazy Whist, 1pm – 3.30pm
St David's Church Hall, Cnr Grange Rd & El Nido Gr
Glen Huntly. Cost: 75 cents. Contact: Cheryl Kennedy 95243356

TUESDAY 17 MARCH

U3A GLEN EIRA OPEN DAY

Hosts: U3A Glen Eira. Try a variety of classes including painting, music and computer demos.
10am – 4pm FREE
1151 Glen Huntly Rd, Glen Huntly
Computer demonstrations: 10am, 11am, 12pm, 1pm, 2pm, 3pm (bookings req'd)
Bookings: Josie Coyle 9572 0571

COME'N TRY EXERCISE TO MUSIC CLASSES FIT ACTIVE (HALF PRICE)

Conducted by Glen Eira City Council. Classes consist of low impact & floor exercises, stretch & relaxation.

Caulfield Recreation Centre Over 50's

9.30am Cost: \$1.75
4 Maple Street, Caulfield
Contact: Crystal 9532 4956

Bentleigh Ladies Over 50's

1.30pm Cost: \$1
Bentleigh/McKinnon Youth Centre
Higgins Road, Bentleigh
Contact: Cheryl Kennedy 9524 3356

AFTERNOON TEA DANCE

Hosts: Dance and Music Vic & Glen Eira City Council. A great afternoon of social dancing (old time and new vogue) plus afternoon tea. 1pm FREE
St Giles Church Hall, 115 Murrumbeena Road, Murrumbeena Contact: 9725 2831

SENIOR CITIZENS CONCERT

Hosts: Carnegie/Murrumbeena Senior Citizens Club.
Afternoon of music and song with Brendon Scott.
1.45pm FREE
314 Neerim Road, Carnegie
Contact: Merle Grace 9571 4235

WEDNESDAY 18 MARCH

DAY TRIP TO HEALESVILLE

Hosts: Greek Women's Senior Citizens Club of McKinnon. Bus trip and BBQ lunch to Healesville.
8am – 5pm (return time approx.)
Cost: \$5 members / \$10 non members
Depart: Moorleigh Community Village
Bookings req'd: Helen Apostolou 9557 6253

PICNIC/BBQ AT WATTLE GROVE

Hosts: Polish Senior Citizens Club of Moorabbin.
New members welcome
10am – 2pm FREE to members; \$3 to non
Wattle Grove, Wheatley Road, McKinnon
Bookings: Peter 9578 6024 or Kristine 9578 1284

OPENING OF POLISH LIBRARY

Hosts: Polish Senior Citizens Club of Glen Eira.
Browse through Polish books available for loan.
1pm – 4pm Free
Committee Room, Glen Eira Town Hall
Contact: Barbara Schenkel 9523 9619

ITALIAN OPEN DAY

Hosts: Glen Eira Italian Pensioners and Senior Citizens Club. Traditional games, music, dancing and singing. 10am – 5.30pm FREE
2 Newham Grove, Ormond
Contact: Angelo Villanti 9523 5172

1930'S & 1940'S AFTERNOON TEA CONCERT

Hosts: East Bentleigh Community Health Centre. An afternoon of music. Tea/coffee and biscuits provided.
2pm – 4pm FREE E. Bentleigh Community Health Centre, Gardeners Rd East Bentleigh
Contact: Danice Kuzmic 9579 2393

THURSDAY 19 MARCH

GLEN EIRA ON FOOT

Hosts: Glen Eira City Council. Morning walk, morning tea & chat with a representative of Walk with Care. 9am – 11am FREE Meet at Springthorpe Gardens, Neerim Rd, Murrumbeena
Bookings req'd: Cheryl Kennedy 95243356

FRIDAY 20 MARCH

PICNIC IN THE PARK

Hosts: Glen Eira City Council. For residents having difficulty getting out and about, join us for a BBQ lunch and entertainment. Limited transport assistance. 11.30am – 2.30pm FREE
Harleston Park, Allison & Seymour Roads Elsternwick
BBQ sausages/salads/fruit/condial
Bookings req'd: Cheryl Kennedy 9524 3356

SATURDAY 21 MARCH

ITALIAN SENIOR CITIZENS CELEBRATION

Hosted by Italian Senior Citizens Group of Moorabbin. A community luncheon with musical entertainment. 12pm – 4pm Cost: \$6
Moorleigh Community Village
Bookings req'd: Raffaele Leuzzi 9592 6189

MONDAY 23 MARCH

TWILIGHT DANCE

Hosts: Caulfield Over 50's Dance Group. A fun evening of Old Time and New Vogue dancing.
Supper provided. 6.30pm – 10pm Cost: \$2
Glen Eira Town Hall Auditorium
Contact: Tony Bell 9578 5143

TUESDAY 24 MARCH

GLEN EIRA ON FOOT

Hosts: Glen Eira City Council. Morning walk, morning tea & chat with a representative from Walk with Care. 9am – 11am FREE Meet at Allnut Park (picnic area), Wheatley Road, Bentleigh
Bookings req'd: Cheryl Kennedy 9524 3356

COME'N TRY TABLE TENNIS (HALF PRICE)

Hosted by Glen Eira City Council. Equipment and morning tea provided.

Tuesday 24 March (beginner to experienced)
Thursday 26 March (experienced to advanced)
10am – 12noon Cost: \$1.50
Bentleigh/McKinnon Youth Centre, Higgins Road, Bentleigh. Contact: Cheryl Kennedy 9524 3356

WEDNESDAY 25 MARCH

EXERCISE TO MUSIC CLASSES (HALF PRICE) CHAIRBASED

Great for people who may suffer from complaints resulting in restricted movement. Morning tea provided. 10am – 11am Cost: \$1.25

FIT ACTIVE

Classes consist of low impact & floor exercises, stretching & relaxation. 11am – 12noon. Cost: \$1.50
Carnegie/Murrumbeena Senior Citizens Club
314 Neerim Road, Carnegie.
Contact: Cheryl Kennedy 9524 3356

VENUES:

Moorleigh Community Village, 90 – 92 Bignell Road East Bentleigh

Glen Eira Town Hall
Cnr Hawthorn & Glen Eira Roads
Caulfield 3162

Further information/brochures
Contact: Cheryl Kennedy 9524 3356

SPECIAL THANKS

Our very special thanks for their support of Picnic In The Park:

BEN HOWE BUTCHERS, MURANDY MUSIC and CAULFIELD U3A ISRAELI DANCE GROUP



Doing Business

A feature focussing on the traders, businesses and workforce of Glen Eira.

Import replacement expo a hit

An Import Replacement Expo, held late last year at Waverley Park, is already looking to be a major success with more than 800 suppliers registering interest in the project.

Sponsored by Business East, the Industry Supplies Office (ISO) and 12 councils, including Glen Eira, the expo was aimed at increasing the level of Australian materials and services used in manufacturing.

The project hopes to encourage Australian companies, who currently import materials and parts, to look locally for manufacturing supplies and services. The ISO has developed a database which matches suppliers with the appropriate end-users to create fully Australian-made products.

The Import Replacement Expo is expected to yield approximately \$12 million worth of locally sourced products for use by Australian manufacturers.

Two Glen Eira businesses were among the 40 which attended the expo: Lochard PL (manufacturer of global environment management systems) and Siltex Australia (Australia's leading steam steriliser manufacturer).

Logistic Controller of Lochard Pty Ltd Ravi Nagarajah said: "The expo has been really positive for us. We've already awarded local contracts to several Victorian companies which reduces our overheads and 'value adds' to the local business economy."

He said the company's participation in the expo had proved very successful and that Lochard had made important local business contacts and planned to continue to do so.

Managing Director of Siltex Australia Danny Jonas was also delighted with the results and said the expo had not only provided the opportunity to make local contacts but had provided several additional leads for Siltex representatives to follow up for ongoing arrangements with local businesses.

"The expo gave us the opportunity to award contracts to local rather than overseas suppliers. We would certainly participate again and thank Glen Eira City Council, Business East and the ISO for the chance to be involved," he said.

Businesses and suppliers wanting any further information are invited to contact Glen Eira's Business Development Planner Andrew Millen on 9524 3384.



Lochard representative Ravi Nagarajah (centre) talks business with local suppliers at the Import Replacement Expo.

Work opportunity in Japan



Glen Eira Council has been approached by the Ogaki International Exchange Association offering a six month appointment for a local resident to work in Ogaki commencing in April 1998. Ogaki is Glen Eira's Sister City.

The appointee must have a good command of Japanese on a daily conversational level and enjoy working with people. Duties at the Exchange Association will include teaching basic English to local residents, visiting kindergartens, primary and junior high schools and welfare facilities and assisting in hosting visiting international English speaking delegations.

Accommodation and meals will be provided free by a home host family and a Working Holiday Visa will be required. The family will even supply a bicycle for daily commuting to work.

Time is tight for those interested in applying for this unique opportunity, with written applications to be received by Monday, 9 March. For further details please contact Tim Presnell at the Glen Eira City Council on 9524 3202.

Promoting business events

The first issue of a regional business events calendar was published last month to promote and support events and activities available to businesses in the southern metropolitan area.

Commissioned by JobSouth, the calendar will be published every second month to provide business operators in the cities of Glen Eira, Monash, Bayside and Kingston with a comprehensive overview of business events. It is hoped the calendar will maximise business participation by minimising duplication and conflict between events.

The southern metropolitan region is characterised by thousands of small and medium sized businesses whose operators need information advice and assistance for their businesses to grow and develop.

The calendar aims to ensure these businesses have access to the wide variety of services offered; seminars, training, exhibitions, and conferences. Businesses wishing to include upcoming events in the calendar can contact Andrew Millen on 9524 3384.

PHOTO BOUTIQUE

"When only the best will do"

775 Glen Huntly Road,
Caulfield South 3162
Telephone: 9523 0163

Business Directory to go ahead

A business directory and community guide covering the City of Glen Eira will be produced in March 1999.

Last month, Council called for expressions of interest to produce the directory, which will include a free listing of all businesses, a comprehensive section on Council services, community group listings and paid advertising.

The combined directory and guide aims to enhance business and community networks, to encourage residents to shop locally, and to provide a comprehensive information resource for all people of Glen Eira.

Look for us on the Web

The Glen Eira City Council Web Site can be found at: <http://www.gleneira.vic.gov.au>

Council's web site has been operational since April 1997, and more than 30,000 people have visited the site. The latest addition is a Japanese translation of the Mayor's message to Glen Eira's Sister City Ogaki.

Permanent features of the site are the Community Events Diary, which shows what is happening around Glen Eira, and a calendar of events listing what's happening in and around Melbourne. The calendar has links which take you to other sites, such as the Melbourne Grand Prix.

We also have links to several Australian newspapers, the weather reports, and some of Melbourne's attractions.

The site contains information for all residents on waste collection timetables, the library catalogue system, leisure facilities, and information on local laws. A feedback page is also available where visitors can email Council with requests or suggestions. The email address for the council is: mail@gleneira.vic.gov.au

So next time you are 'net surfing' call in at the Council's web site and tell us what you think.

Working for the man....

Reporter Myrine Hawksworth spent a day with the GlenWorks team to see what really goes on "down at the depot" and developed an appreciation of the demands and challenges of keeping the City's roads, drains, and pathways in working order.

It's 8.30am when I stroll into the Glen Eira City Council Depot – GlenWorks. The early start has been a bit of a haul, but I know the depot guys have been hard at work for an hour and a half already!

This is my day to join them – get the inside story, so to speak, on how the works teams spend their day. I meet with Works Co-ordinator Kerry Martin, who gives me a brief overview and introduces me to Works Officer Bill McGiven with whom I'll spend the morning and meet the teams.

Council employs 31 staff at GlenWorks; two works officers, office manager, a depot clerk and 10 work teams who cover drainage, asphalt, concrete, and general minor construction. Sub-contractors are also employed as needed for specific repairs or works.

Bill McGiven explains, as we head to the first job, that the City of Glen Eira has been divided into 68 areas, and each team carries out repairs in their own allocated areas.

"The teams usually consist of two men, but sometimes more for the bigger jobs. Each team is responsible for the work they do in their own areas.

"It's not like the old days of having a supervisor looking over your shoulder and needing to check up on everything that's being done. The guys take their work very seriously," Bill said.

Bill's role involves advice and support, rather than straight supervision. He consults with team members when they require assistance or advice, follows up reports from residents by checking areas needing repair, prioritises jobs, and investigates issues surrounding litigation or culpability when required.

He said there is never a time when he doesn't have more jobs on than can possibly be handled, and everyone always wants their problem given "high" priority!

The depot guys are responsible for everything from clearing blocked drains, repairing uneven, cracked or damaged footpaths, clearing the streets of rubbish or refuse (from storms or the like), and even picking up animals killed on the roads.

"That's really hard," said Bill. "Getting a call from someone whose dog or cat hasn't come home. They ring council to find out if it's been hit and we have to match the description and let them know if we've picked it up."

We arrive at the first job, just as the concrete also arrives. A new house being built in Bealiba Road has meant the destruction of the original footpath. Abe and Nick have done all the hack work (or so I think), having spent the preceding hour or so clearing broken concrete, smoothing and raking the pathway, setting up the edging ready for pouring the fresh concrete.

Abe smiles as he hands me a shovel: "Just spread it roughly, as it comes down the chute, we'll neaten it up when it's all in."

The concrete starts coming. And coming, and coming – fast! I don't think I ever realised how heavy wet concrete is! Apparently, we have to work quickly to get it spread and smoothed before it "goes off". My stomach muscles are letting me know they were not built for this sort of work.

The last little bit from the concrete mixer is piled on the nature strip. I ask Bill about this – doesn't it leave a mess?

"The guys will clean up all the little bits before they leave, but that pile is put in a bucket for use on other jobs over the next hour or so. You'd be surprised how often another team needs just a scoop or two of concrete to finish up a job," he says.

Next job and it's more shoveling. But this time it's lighter, hotter, and smellier – asphalt! Boris and his team are sealing a walkway alongside a school ground in Nagle Ave. The section has never had a pathway and the pressure is on to complete it before school returns.

Jeff offers me his shovel and says: "Can I go home now, and leave you here?"

"No way! I don't know what I'm doing," I say as hot asphalt starts to mound up around my feet. It looked so straight forward from a distance.

I ask the guys how long they've worked together as a team. "Too long!" they chorus and then all laugh. I sense that they may be a little crazy, and make a comment to this effect.

"It's the fumes," explains Gary seriously, "from the asphalt, it gets to you after a while." And he glances at the others who solemnly nod their agreement, before breaking into laughter again.

This particular job has a higher than normal degree of difficulty because the pathway slopes down to the road. They need to get the asphalt spread and rolled without letting it run but can't roll it too soon because the roller may slide on the slanted surface. It's a matter of careful timing. Another aspect of the job involves Council's Park Services – one of the trees lining the road adjacent to the new pathway is dying from borer and needs to be removed before it becomes dangerous.

"Co-ordinating two departments like this can be a challenge," explains Bill. "The depot can't finish the path, even though we're under pressure to do so in time for school, until the tree has been taken away.

But that is a huge job, this tree must be 15 metres tall."

As we head off to the next job, Bill points out Abe (from Bealiba St) working next to the kerb with a bucket and trowel. He is patching and smoothing an edge of the kerb which needs repair.

"There you go," Bill says, "That's what happens to the spare concrete!"

In Hotham Road, not far from the corner of Nepean Highway, the next team has set up an island with witches hats, to repair the centre section of the road. Bill explains that drain maintenance has left some sections of the road in need of repair.

Foreman Colin insists on me wearing one of the brightly coloured vests, but despite wearing the safety vest, safety gloves and safety ear muffs, I feel anything but 'safe'. Cars are whizzing past on both sides of us. A truck decides it can't fit down the left lane and takes the wrong side of the road to get through. Three cars follow it, also on the wrong side of the road, oblivious to the error they've all made and the danger they're posing for these workers.

Colin notices my nervousness and nods. "Yeah, you take you're life in your hands sometimes in this job," he says.

Then, after some careful instructions, I have a go at the jack hammer. Breaking asphalt was never my strong point, and the machine feels like it's leaping out of my hands as I work. A few minutes is enough for me to develop an appreciation of the sheer physical strength and skill required to do a couple of hours of this kind of work. Colin smiles and takes over again, making it look ridiculously easy by comparison.

The pieces of old asphalt are lifted from the road by backhoe and these huge slabs are hoisted into the truck for removal. Bill explains that this part of the job used to be done by the men by hand – phew! They must have been giants, not men.

Then Bill and I pile back into the car to attend a drain clearance. Recent downpours have played "havoc" with the City's drainage system and left many residents concerned about overflowing drains. Bill has had a spate of calls to attend to.

Some times it's the sheer volume of water coming through, but leaves, litter and even lawn clippings can clog a drain. This can happen especially during autumn when residents pile their leaves neatly in the gutter only to have them swept into the drains when it rains to clog up someone else's section of drain.

"People don't realise that the problem can actually be quite a distance away in another connecting drain," he said.

Apparently, problems can also be caused by plumbers or cable installers who inadvertently disrupt the drains by their work. Sometimes a robotic camera is used to identify the problem. This camera can be fed through the pipes to reveal problems or blockages some distance away from the actual site. Knowing the drainage system and which pipe connects to where is extremely important in identifying and rectifying the problems quickly and efficiently.

Other times, it's the root systems of nearby trees which block off the pipes. Bill said this year's long hot summer has meant more root problems than usual as thirsty tree roots have forced their way into the drains in search of water. He said Council hired a contractor to clear the drains of tree roots as it was

a highly specialised job and this is more cost-effective than having the Council own such equipment.

I ask if cutting through the roots on the inside of the pipes causes the trees any damage.

"Not at all, it's just like pruning them really. The tree recovers easily and the roots will be back."

He pauses and grins: "So will we!"

At the drain in Balaclava Road, a huge truck is backing and turning to prepare for clearing the drain. With the help of a torch and mirror, Bill and Tony are able to look down the connecting drains to check the severity of the root intrusion. Contractor Dave will be using a high powered water jet propelled cutting tool to clear the roots. The truck also has a suction facility to remove chopped pieces of root, water and other debris from the drain. It's noisy but it works.

I feel quite content to leave this job to the experts! On completion of this drain Tony, John and Dave (the contractor) have several others to check out. John explains that this is their third for the morning.

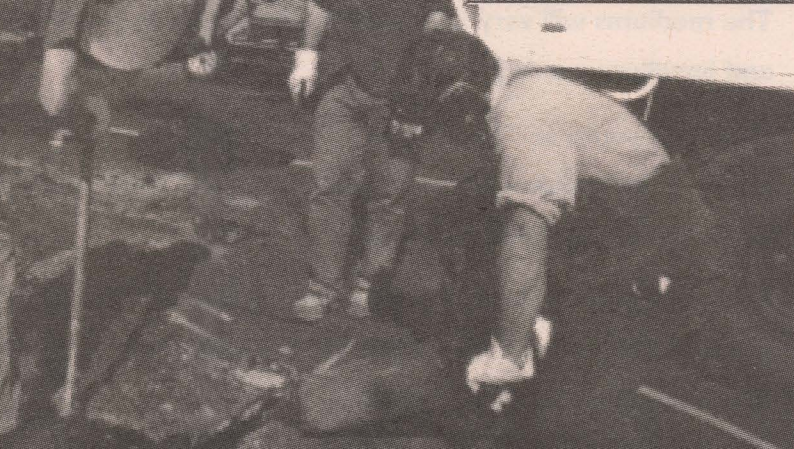
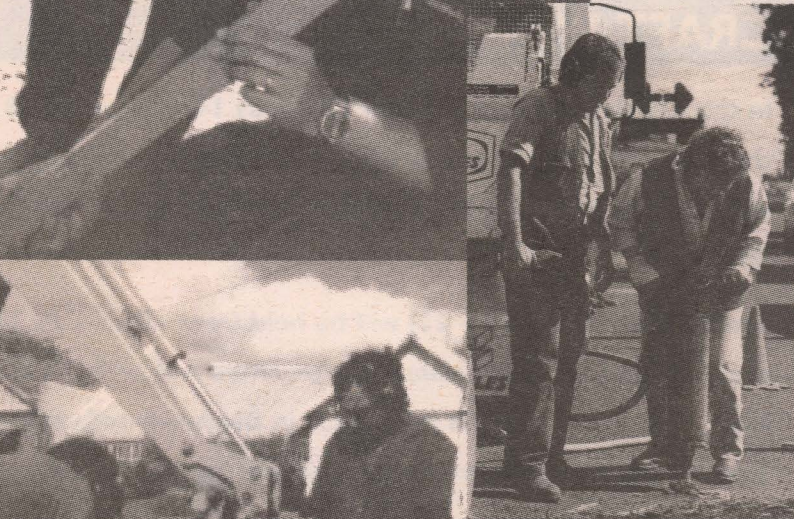
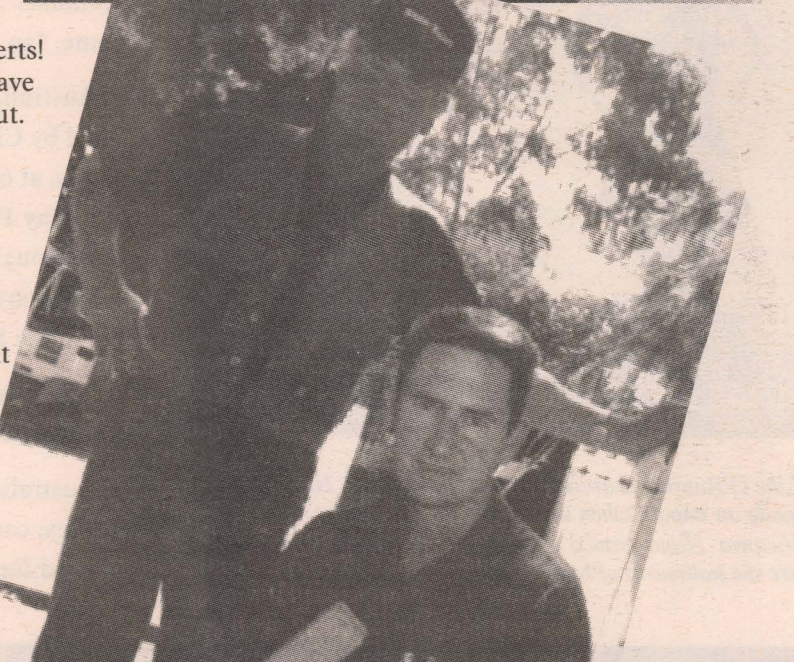
I ask how long it takes to clear a drain and he smiles. "As long as it takes!" he says.

"There's no way to judge that until you get down there, it really depends on so many things. The extent of the tree roots, the amount of stuff that's been washed down, and the general condition of the drain," John said.

Bill's walky-talky crackles into life and says he's needed back at the depot. He asks if I've seen enough and I know I've **done** enough to keep me happy for a long while. I have no idea how these guys can keep shoveling, digging, jack-hammering, lifting and working all day and comment on this to Bill.

"Yeah, so much for the 'leaning on the shovel all day' myth, hey?" he says.

And my aching body and stiffening muscles couldn't agree with him more!



Arts *New showcase for Australian craft in Caulfield*



Rosemary O'Rourke is quickly developing a national reputation for her textile art. Based in Hobart, Rosemary already has her work in state collections and been included in several important group exhibitions.



Like O'Rourke, David Ray is a young artist. His ceramics made an impact when shown earlier this year at Craft Victoria. Hand-formed and beautifully painted glazed images are the hallmarks of his work.

The Glen Eira Arts Complex Gallery will have craft as its focus in the inaugural Australian Craft Showcase in April. The Showcase is designed to provide audiences with an opportunity to see, and purchase, some of the very best of Australian craft.

The seven artists were chosen by competitive entry, to create an exhibition of quality and diversity. Fine jewellery by Gillian Hillman, stunning tapestries by Abigail Howells, bold tapestries by Tim Gresham, ceramic splendours by David Ray, individually painted silk scarves and hangings by Elizabeth Lambert, creative, relevant jewellery by Felicity Dagleish, and ornate textiles by Rosemary O'Rourke.

Visual Arts Co-ordinator David O'Halloran said the work ranges from sculptural expressions by individual artists through to carefully conceived and beautifully made functional ware.

Mr O'Halloran said the event will provide "a great opportunity to see the work of seven very creative individuals", in the first of what he hopes will become, "an annual event of national significance".

The Australian Craft Showcase will be officially opened by Christine Barro, Accessories Buyer at Georges, at 6pm on **Thursday 2 April** and conclude on **Sunday 19 April** and will provide a great family event throughout the Easter period. Residents of Glen Eira are welcome to attend the opening and entry to the Showcase is free.

The Showcase is being supported by artists' talks, lectures, and craft workshops.

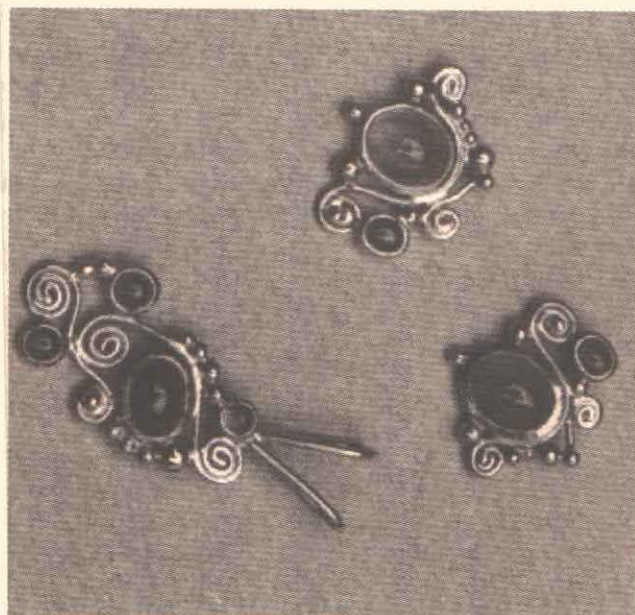
The Australian **CRAFT** Showcase, Glen Eira Arts Complex, corner Hawthorn & Glen Eira Roads. Caulfield Exhibition inquiries to David O'Halloran

9524 3214. Workshop and lecture inquiries to Susan Pilbeam or Deborah Vanderwerp 9524 3402.

An example of David Ray's work – he will be taking Craft Workshops.



The silks of Elizabeth Lambert are like the forest – colours of green, ochre and brown creating beautiful intermingling layers. Individually hand-screened, no two are alike.



Consistently elegant are Gillian Hillman's designs for her range of jewellery which has graced exhibitions at both Myer and Georges.



CRAFT WORKSHOPS

In the five days following Easter (Tuesday 14 – Saturday 18 April) the Glen Eira Arts Complex will run a series of workshops in various craft mediums in association with the Australian Craft Showcase.

Youth classes (ages 13 – 21) will be held from 10am – 12.30pm each day and specialist classes for teachers and artists will be held from 2 – 5pm. These will take place in the newly refurbished Oak Tree House on Hawthorn Road, adjacent to the library.

The mediums will vary and include ceramics, silk painting, tapestry and jewellery making.

Cost: \$15 youth and \$25 adults. The cost of materials for each class will be additional for the workshops and classes, and tutors are endorsed by Craft Victoria.

There are only 10 places in each of the classes, so book early. Details are available from the Glen Eira Arts Complex or by contacting the Arts programmers on 9524 3402.

Craft talks

Sunday 5 April 2.30pm – 4pm.

Following the successful seminar series in 1997, the arts department is once again opening the Theatrette of the Glen Eira Arts Complex to artists.

In conjunction with the Australian CRAFT Showcase, we are presenting an opportunity to hear the exhibiting artists talk about their work and the mediums they choose to work with. Participants will also have the opportunity to meet the artists during afternoon tea and see the showcase with the additional knowledge of the work presented.

Cost: \$10 adult and \$7 concession

For bookings contact the Arts programmers on 9524 3402.

The land explored

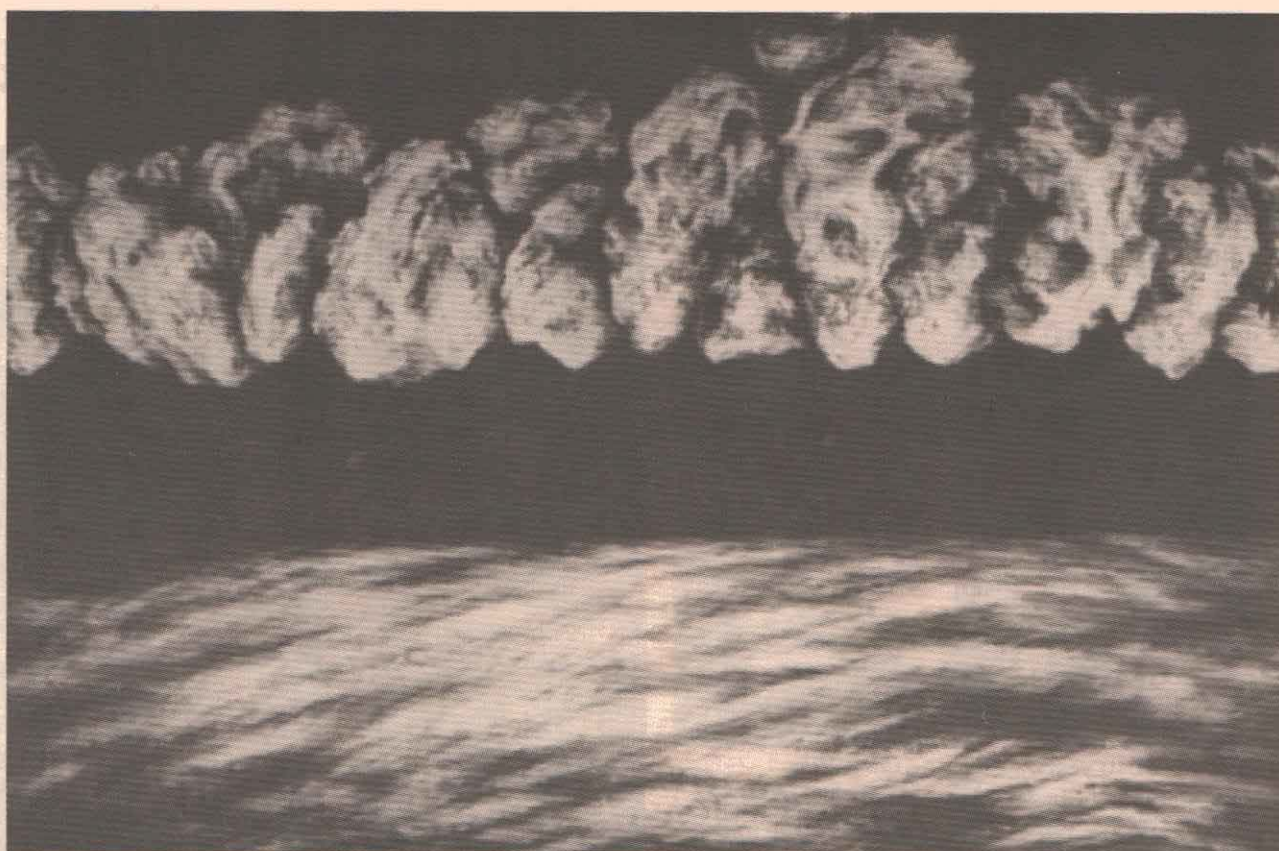
Two exhibitions running concurrently at the Glen Eira Arts Complex look at "the land". One explores the beauty of the landscape; the other, boundaries and land ownership.

Noela Stratford's *Access* exhibition explores ideas of boundaries, both physical and psychological. Stratford, who lives on the volcanic plains that cover a large part of south western Victoria, has researched the early settlers' use of volcanic stone to construct dry stone walls. These walls were built to both confine their stock and mark the boundaries of their estate. Stratford extends this to look at the creation of laws from the 12th to 18th centuries which altered relationships to the land, from a time when land was used communally to grow crops and graze animals, to its private annexation.

The qualities of permanence and stability inherent in stone feature in this series of drawings, photographs, paintings and sculptures. The exhibition opens on Wednesday 18 March through to Sunday 29 March.

Erna Roche, is an Elsternwick artist whose paintings depict her love of the Australian bush. Roche originally trained in textile design in Eindhoven, Holland. The oil paintings in this exhibition feature mainly the Victorian bush and beach scenes she has explored on her many walks. Roche's exhibition will be launched by Carol Boothman at 6pm on Tuesday 17 March and the exhibition closes on Sunday 29 March.

(Above right) A particular work of Noela Stratford featuring use of volcanic stone.



The City of Glen Eira and Wesley College, Elsternwick Campus proudly present:

MICHAEL KIERAN HARVEY and THE GLEN EIRA YOUTH ORCHESTRA

Share your passion for music with Michael Keiran Harvey as he performs selected solo piano works, and Tchaikovsky accompanied by the Glen Eira Youth Orchestra. The afternoon will also feature a performance of the winning composition from the Youth Solo Piano Competition.

Venue: Auditorium, Glen Eira Arts Complex
Date: Sunday 29 March 1998
Time: 2.30pm
Cost: \$12 adults, \$5 children, \$25 (family, 2 adults and 2 children)
Bookings: Christine Hopkins, Wesley College Elsternwick on 9528 2522

Art and the everyday in our city

Last year we called for local residents interested in having their lounge rooms photographed for an exhibition called *Everyday*. We were delighted with the response. Jane Burton has been photographing lounge rooms and is currently considering the presentation of the photographs for the exhibition.

Shortly to begin her work for the exhibition is photographer, Lyndal Walker, who will photograph garage sales that occur within the city. Lyndal's previous art work was concerned with shared living and social spaces. A recent series of photographs exhibited at the Karyn Lovegrove Gallery depicted the living areas of share households. The *Everyday* exhibition which opens in early June, will also feature works by Destiny Deacon and Jon Campbell.

EVERYDAY bus tours to discover your City

In the last issue of the Glen Eira News we asked local residents to contact us about places, people or incidents of interest in their street or area to assist us in putting together bus tours of Glen Eira. We have already received some wonderful offerings, from such diverse themes as what people do to decorate their houses and the history of the residents of Ripponlea, to tracing the missing railway lines. Even an old apple tree, in one of our parks, which used to be part of an extensive property has been noted of interest.

We need your suggestions and stories. It's the knowledge and history by individuals that makes a place come to life. We are very keen to gather more information on the migration stories to Glen Eira. Why do you choose to live here?

The four themes we are focussing on are: *Old Glen Eira* (to Federation), *The Wars*, *Migration*, and *The Suburban Dream*. Please send your letters to Arts Programmers, Glen Eira City Council, PO Box 42, Caulfield South, 3162. Contact Deborah or Susan on 9524 3402.

Glen Eira Arts Complex

Corner Glen Eira and Hawthorn Roads,
Caulfield

Phone: 9524 3287 Facsimile: 9524 3399

Email: rverde@gleneira.vic.gov.au

Website: www.citysearch.com.au/mel/gleneiraarts

Calendar for March

Gallery

To March 15

Talking Pictures staged to coincide with the Glen Eira's Writers Competition, *Talking Pictures* provides just a sample of the many artists who use text in their work.

18 - 29 March

Noela Stratford drawings, paintings and sculpture from the use of stone fences made by scoria of ancient volcanic eruptions.

18 - 29 March

A journey, an exhibition by Erna Roche features oil paintings of Victorian bush scenes.

Theatrette

5 March

Readings of the winning entries of the **Glen Eira Writers Competition** featuring readings of the winning entries by professional actors, Alan Hopgood and Kimberley Michaels. Theatrette, commencing 6pm. Free admission (includes light supper and opportunity to view the *Talking Pictures* exhibition).

Auditorium

26 March

Magic Melodies presents *The Three Amigos* in concert with Peter Chapple, Craig Macdonald and Dave Kaffey. Tickets: \$9 Bookings: 9557 5493. 11am and 1.30pm (includes morning and afternoon tea).

Boyd Park *Restoring* our natural heritage

You wouldn't exactly call him a hermit, but Boyd Park curator Matthew Simmons doesn't mind being alone. Alone, that is, with the flora and fauna of the three parks for which he cares.

Matthew has looked after the City of Glen Eira's Springthorpe and Riley reserves and the Boyd Park Indigenous Corridor for almost two years. And aside from the occasional visit from the Glen Eira Environment Group (who helped establish Boyd Park) he spends most of his time alone with the hobby falcons, noisy miners, pardalotes, grey fantails, chocolate lilies, red gums, and native grasses of seven hectares of parkland.

Boyd Park Indigenous Corridor is home to some of the oldest red gums in the area which is part of what was once known as the Outer Circle Railway Line. The area was established as a native and indigenous reserve about 10 years ago by the Glen Eira Environment Group. Members of this group still help maintain the park with regular planting and clearing.

Over this time, further plants have been established through careful propagation from the remnants of indigenous bush along the railway line.

"We have some rare plants here," Matthew said. "Chocolate lilies for example. Not necessarily rare in Australia, but rare in this area, where they're indigenous."

Matthew's biggest responsibility is the mowing and generally keeping the parks tidy. But he tries to find time also to collect seeds and 'experiment' with different plant species to develop a long term plan for each park.

He has begun replacing the European grass sections of Boyd Park with native grass, by planting a small section of the grass and then weeding back the other grasses as the native grass takes hold. He's hoping that with his help, despite the compaction of years of mowing, the native grass will gradually take over the area.

"We're not really aiming to restore [the area] to what it was, that might not be possible. But it's great to be able to show people what native and indigenous gardens have to offer," Matthew said.

Matthew said the plants indigenous to an area are often more hardy and less inclined to suffer with extreme weather conditions such as the dry 1997-98 summer. He said parks like Boyd Park needed less intensive watering than other European based parks when drought hit. Also, he said, restoring the indigenous species drew more bird life to the park.



Boyd Park curator Matthew Simmons with some of the native indigenous species now being established in the park.

As he speaks, a noisy miner swoops out of the top of a nearby tree to let another smaller bird know who's boss. Matthew shakes his fist at it.

"That bird is driving me crazy!" he says. "Noisy miners can be so aggressive."

Matthew said the plan for Boyd Park was to include some spiny indigenous plants such as prickly wattle (*Acacia paradoxa*) and sweet bursaria (*Bursaria spinosa*) to provide the fantails, wrens, and honey eaters with shelter from the larger birds. He said the plan would take several years to implement but having been established, ultimately the park would need less intensive care and would gradually be able to "look after itself".

Matthew's favourite time of day is the morning. He loves the shine of sunlight on the morning mist and the sounds of waking bird life.

He loves working outside and being part of the regeneration of the City's native and indigenous heritage.

"I love being here. It's so peaceful. It's not just the plants. It's the whole system. The creatures as well, and how it all inter-relates," he said.

And what will Matthew do when Boyd Park is established and 'looking after itself'? He's confident there'll always be a need for people who care for native indigenous plant and animal life and who love what they do.

U3A Bus Tours 1st April, 8am - 6pm

PETTY'S APPLE ORCHARD. Now you can join us on a visit to this famous antique apple orchard. 200 varieties to discover and taste. Opportunity to buy fresh apples, jellies, etc. Afterwards we travel to Yarra Glen for a country launch.

22nd April 8am - 5.30pm

VISIT HISTORIC MALDON. Ride in a CLYDESDALE DRAWN WAGON. Visit the Carman's Tunnel GOLD MINE. Plenty of time to shop for old time goodies and enjoy some bread, cakes, etc. baked in the original 1850's oven.

ENQUIRIES: 9572 0571 OR 9523 7862 (AH).

THE COMMUNITY COLLEGE AT WESLEY Elsternwick Community Arts Program

The Elsternwick Community Arts Program is now offering courses in the following:

Pre-School Music for 2, 3 and 4 Year Olds
Fitness Class - including weights room & walking groups
After School Activities for children

- French Language
- Ballet
- Instrumental Tuition
- Circus Training
- Russian Language (beginning Term 2)

Evening Classes

- Life Drawing
- Choir
- Instrumental Tuition
- Sewing
- Photography
- Using Computers - including Word Processing, Internet

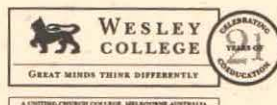
For all enquiries please contact:

Dennis Freeman, Elsternwick Community Arts Program
Wesley College, Elsternwick,
5 Gladstone Parade,
Elsternwick 3185

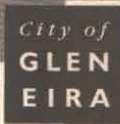
Tel. 9528 2522

Fax. 9523 5244

Email: dfreeman@cato.wesley.vic.edu.au



Calendar of events



Glen Eira City Council keeps a database of community events planned for the coming 12 months, as advised by community groups and organisations. The aim is to help groups plan ahead and avoid clashing dates for big events. To add material or to inquire about other events listings, phone 9524 3431.

Glen Eira News will publish a special six-month Calendar of Events in its July issue, which can be kept and put on a wall or noticeboard.

If you would like your event (between July and December 1998) listed in the next Calendar of Events, please send details by 8 June to: **Calendar of Events, Glen Eira News, PO Box 42, Caulfield South 3162.**



GLEN EIRA HOLIDAY PROGRAMS

April School Holidays

**Tuesday 14 April –
Friday 24 April 1998**

You sure will have a fun and entertaining time on the holiday program! Join us for some fabulous sports clinics, which include: tennis, soccer and baseball! If you enjoy art and craft then you will love making clown masks, galloping horses, painting T-shirts and a whole lot more. Have fun at our beach party day, playing with the huge earthball and going on some great excursions.

Come along and join us in all the fun during these holidays. Don't miss out – book early!

All bookings held at: Glen Eira City Council – entrance through the main carpark 'Service Centre' entrance

Bookings commence on:

Wednesday 1 April 6pm – 8pm

Thursday 2 April 8.30am – 5.30pm

Friday 3 April and
Monday 6 April 8.30am – 5.30pm

Brochures will be available late March – you can pick one up from libraries, Council offices and from your local school.

For more information, please contact Chris Potiris on 9524 3277.

Why? Stop supports parents too

Why? Stop's message of providing support, counselling, goal setting and practical assistance to the youth of the Glen Eira has been out and about for almost a year. But Youth Worker Jody Laughton has another message: **Why? Stop is for parents too.**

Situated at 54 Rosstown Road, Carnegie, the Why? Stop Youth Information Centre grew out of the needs revealed by a study completed by Glen Eira City Council in 1995 – 96. The centre now provides a range of services including everything from counselling about relationship and family issues, to the more practical issues of filling out forms for Austudy or Centrelink.

Jody said although the majority of the visitors to the centre were youth, the Why? Stop has a lot to offer parents. She said the focus of her work was to take a preventative and problem solving approach, with parents and young people, in dealing with issues experienced before they get to crisis point.

"A lot of my work involves supporting families before things get drastic. Letting them know they're not alone in trying to deal with difficult circumstances. There is someone here to talk to who can help them find solutions," she said.

"It's a really big step to actually admit you're needing help, for parents as well as young people. Society emphasises being successful and happy, and we all like to portray an image of being okay. So it's difficult to come out and ask for support," she said.

Jody's role is to make people comfortable with that admission and help them work towards a plan or strategy that enables the family to work through the issues. Without this support many families find themselves dealing with conflict, abuse, family breakdown and homelessness, she said.

Jody said she personally got a lot out of dealing with young people, and often had them drop in some time later to let her know how they are getting along.



"I love to hear back from people that they're getting on with their lives. They go from being overwhelmed by life in general to having successful relationships and finding work and being more in control of their lives."

Why? Stop Youth Information Centre offers parents all the same services it offers young people. Parents are welcome to phone or drop in to the centre during opening hours (Monday to Friday 2 – 6pm) and can access information, referrals and counselling on a wide range of youth-related matters – from education and training, Austudy, youth groups, and sporting clubs to information about available family support services, health and drug-related programs.

"Parents are welcome to drop into the centre on their own or with their son or daughter, to check out the set-up and see what we have on offer," Jody said.

The Why? Stop is friendly, relaxed, confidential and FREE! Contact: 9572 5688.

A message from Local Laws

Open air burning

Did you know that all forms of open air burning are prohibited in the City of Glen Eira? Residents are reminded that under the provisions of the Glen Eira City Council Local Law 1995, it is an offence to burn off garden refuse and any other combustible material, including newspapers, either in an incinerator or on a small pile in the open air. Barbecues are permitted providing they are properly constructed and that it is not a total fire ban day.

Footpath permits

Under the provisions of the Glen Eira City Council Local Law 1994, any person wishing to display an 'A' board sign, tables with chairs, or goods on a footpath require a permit.

The intention of the local law is to assist shopkeepers in selling their items while at the same time to ensure that pedestrians are not obstructed.

So if you are intending to display any signs, or place tables with chairs or goods on footpaths, please contact the Local Law department on 9524 3333.

Quick quiz answer
Mackie Ward in the City of Glen Eira.

LEARN JUDO

(self defence, concentration, discipline, co-ordination, self-esteem, enjoyment)

Littlies, teenagers and adults
Beginners to Black Belt
Caulfield Recreation Centre

9578 4460

GLEN HUNTLY Friendship Group

99 Grange Rd, Glen Huntly

March 10 and 11 Bus trip to the lovely Begonia Festival at Ballarat. Also included Sovereign Hill Gold Museum, Eureka Stockade Centre opening, Apex Art Show, Garden Fair, Fine Art and Craft and Open Range Wildlife Park. Overnight at Ballarat Village Motor Inn. Cost \$135 includes accommodation, transport, entrance fees, dinner and breakfast, afternoon and morning tea. Lunches not included. Departs 9am from 99 Grange Road, Glen Huntly, 9.15am from 185 Poath Road, Hughesdale. Return 5.30pm. Payment one week before departure.

For bookings ring Margaret 9596 6124



Extended Tours Dates

March 23 – 27 (5 Day) \$420 High Country Special
May 31 – June 6 (7 Day) \$550 NSW Central Coast
Nov 19-22 (4 Day) \$325 Mystery Tour

For further details of the above tours
contact Peter Lewis on 9569 7941

April 27 – 29 (3 Day) \$265 Gippsland Lakes

For further details of this tour contact
Karen Sauvarin on 9568 3596 after 6pm

BLADDER PROBLEM?

Leakage, poor control, frequency, urgency

Persistent bed wetting

Decreased sexual fulfilment due
to weak pelvic floor muscles?

Advanced neuro muscular stimulation strengthens pelvic floor muscles and settles bladders. High success rate with a discreet home-based treatment that you control.
No drugs involved.

Consulting East Bentleigh and Berwick.

Sister Dorothy Stevens, Control Health Services,
phone 9563 8299

Member of Continence Foundation and Royal College
of Nursing Australia.

Community Diary

MEETINGS & CLUBS

Caulfield Photographic Society meets every two weeks at St Peter's Church Hall, cnr Neerim Road and Ames Avenue, Murrumbena. All welcome. February meetings: Monday 2nd and 16th at 7.45pm. Contact: Lorraine on 9531 2596 (AH).

McKinnon Men's Probus Club meets at the Bentleigh Club, Yawla Street, Bentleigh on the 2nd Wednesday of each month at 9.15am for 9.45am to noon. Meetings include member topics, guest speakers and monthly outing. New members welcome. Contact: Peter Ware on 9557 4506.

St Agnes' Anglican Church offers the following activities for young people: Kids' Club (Sunday School) ages 3 to 11, First Eighteen ages 11 to 18, Music classes for beginners aged from 4 years and Drama classes for children. Contact: 9571 3932. Fax: 9572 0132.

Glover Street Kindergarten is looking for members for a new playgroup which began on 12 February. The group meets on Thursdays from 1pm to 3pm. Please join us - all welcome. Contact: Elaine McDonald 9579 5545.

Community Aid Abroad St Kilda/Glen Eira Group will meet to discuss the Government's Native Title Proposals and ideas for writing letters at the Betty Day Centre, Argyle St, St Kilda on Monday 16 March at 7.30pm. Contact: Cathy on 9578 0613.

Caulfield Writers Group welcomes writers of all ages and offers a fortnightly opportunity to read and workshop their work. Short stories, children's or adult literature, poetry or biographical. Contact: John on 9889 7922.

The Glen Eira Community Forum will hold a community forum at McKinnon Hall, 118 McKinnon Road, McKinnon on Wednesday 4 March from 8pm. Topic for discussion: "The new role of city councillors". Keynote speakers: Office of Local Government Director of Local Government Operations Vern Robson and Secretary of the Victorian Local Government Association Cr Mike Hill. Free entry. Contact: Marlene Campbell on 9527 1205.

Southern Music Club proudly presents 19-year-old Heath Wooster performing on the Yamaha EL90 at the Senior Citizens Centre, 2 Arthur St, Bentleigh, on Wednesday 18 March, doors open at 7.30pm. Cost: \$5 non-members and \$3 members. Contact: Will Rainer on 9544 6394.

VOLUNTEERS

Glen Eira Community Information and Resource Centre Social Support and Monitoring Program urgently requires volunteers weekly, fortnightly, or occasionally, to assist clients with shopping, transport and friendly visits. Car necessary. Contact: Linda Butterfield on 9524 3314.

Southern Citizen Advocacy is seeking volunteers with an ability to handle every day matters and assist an adult with a disability to participate in community life. Short orientation program begins soon. Contact: 9576 0155.

5th Central Moorabbin Scout Group seeks adult scout leaders. For more information please contact Bruce Watkins on 9557 5682 or Helen Chaberka on 9557 5135.

SERVICES

Monash Medical Centre BreastScreen Victoria offers free screening mammograms at several centres in the South East Melbourne Metropolitan area. Contact: 13 20 50 for an appointment.

Moorabbin Toy Library is situated in the Moorleigh Community Village, 90 - 92 Bignell Rd, East Bentleigh Tues. 1.15 - 2.45pm, Wed. 7.30 - 8.30pm, Thurs to Sat. 9.30 - 11am, and Sat. 1.30 - 3pm. Membership available for families, home-based and family day care caregivers, groups and foster families. Contact: 9570 3590.

McKinnon Occasional Care provides a safe, happy learning environment for children aged two years and over. Sessions held at 261 McKinnon Road, McKinnon on Wednesdays from 9.15am to 12.15pm. Contact: Sue Lyon on 9578 8454.

ARTS

Jacaranda Theatre will present the intriguing courtroom drama *Nuts* by Tom Topor from 20 - 28 March, 1998, directed by Edna Bartlett. Tickets \$14 adults, \$11 concession & groups of 10. Free program, pre-show sherry, supper and champagne. Glen Eira Arts Complex Theatre, cnr Glen Eira and Hawthorn Roads, Caulfield. Bookings contact: 9553 0148.

St Stephens Uniting Church will present *Easter Expressions* at the church, 158 Balaclava Road, Caulfield on Saturday, April 4 at 8pm. *Easter Expressions* will explore the Easter narrative as seen through the eyes of five local Christian songwriters. Suggested donation: \$5. Contact: Peter Heazlewood on 9570 4756.

Adelphi Players Theatre Company will perform the comedy *The Facts of Life* by Roger MacDougall, at National Trust property Labassa, Manor Grove, Caulfield North on Saturday 14 March, at 2.15pm and 8.15pm. Entry \$12, concession \$10 (includes refreshments). Bookings: 9690 1593.

The Music Lovers' Society will hold a recital at St Paul's Anglican Church, Dandenong Road, Caulfield North (opposite Glenferrie Road), on Saturday 14 March at 8pm.

Featuring: pianist Susanna Saw playing Scarlatti, Chopin, Tchaikovsky, Granados and Miriam Hyde; and Zoe Knighton on cello, accompanied by Sarah Watson, playing J. S. Bach, Beethoven, Messiaen and Rachmaninov. Entry \$8, \$6 concessions, \$3 children, \$17 family.

Contact: 9822 7292 or 9571 0850.

FETES & ACTIVITIES

St Agnes' Anglican Church will hold its annual fete at the church, 116 Booran Road, Glen Huntly on Saturday 21 March, from 9am to noon. Cakes, crafts, plants and more. Contact: 9571 3932.

"C" District Neighbourhood Watch will hold a Monster Family Day at King George VI Memorial Reserve, East Boundary Road, East Bentleigh, on Sunday 29 March, from 10am to 4pm. Free activities for children and adults, police rock band Code One, displays by Police Historical Society, State Emergency Service, Metropolitan Fire Brigade and the Ambulance Service of Victoria.

Carnegie Primary School will hold a car boot sale in the school grounds, Trugannini Rd, Carnegie, on Saturday 28 March, from 9.30am to 3pm. Stall holder inquiries: 9572 1403.

Glen Eira Scout Association will host a Scout Expo at Caulfield Racecourse on Sunday 22 March from 10am to 4pm. Demonstrations and activities include abseiling, rope bridge, stalls and Group displays. See local scouts in action.

Historic "Box Cottage" at Joyce Park, Jasper Rd, McKinnon will be open Sunday 29 March from 2 to 4.30pm. Box Family Day. Pioneer memorabilia on display. All welcome. Donation: 50c to the Moorabbin Historic Society. Contact: 9578 7060.

Elsternwick artist Adrian Crevatin will exhibit his fresco work at Span Galleries, 45 Flinders Lane, Melbourne from 31 March to 6 April. Contact: Adrian on 9532 9065.



"The Three Amigos"

Thursday 26 March
11am & 1.30pm

A show packed with mirth, song and silliness. The ever popular and charming Peter Chapple will team up with his mate Craig Macdonald and comedian Dave Kaffey. Their incredible vocal talent, rapport, quick wit and humour will be on full display. The warmth and charm of these three "characters" will shine through.

"This show will definitely leave you laughing and smiling".



Magic Melodies

GLEN EIRA ARTS COMPLEX AUDITORIUM

(former Caulfield Town Hall)

Corner Hawthorn & Glen Eira Roads, Caulfield South

'SHOWS INCLUDE COMPLIMENTARY MORNING OR AFTERNOON TEA'

"Book now to be part of the fun"

COST OF TICKETS

Individual tickets \$9
Groups (10 plus) \$8

BOOKINGS & INFORMATION:
contact (03) 9557 5493

BOOKING COUPON

I would like to attend

Please tick:

Number of tickets per show:

☐ Thursday 26 March
"The Three Amigos"

11.00AM

1.30PM

Name: _____

Address: _____

Amount \$ _____

(cheques payable to "Magic Melodies")

Post to: Magic Melodies,
PO Box 456, Bentleigh, 3204