

Glen Eira News

Glen Eira City Council, corner Hawthorn and Glen Eira Roads, South Caulfield 3162
Phone: 9524 3333 Fax: 9523 0339 Email: mail@gleneira.vic.gov.au

Lest we forget

The City of Glen Eira remembered those lost at war at an Anzac service held at the War Memorial in Caulfield Park last month.

About 30 returned servicemen marched in the parade and representatives from Caulfield RSL, Bentleigh War Widows, Soldiers Sailors and Airmen's Mothers Association, Caulfield St Kilda War Widows, Carnegie RSL attended the service. The Army also attended and provided a guard for the service (1st Petroleum Company, Oakleigh Barracks). A wreath was laid by Lt. Kirsten Scudmore.

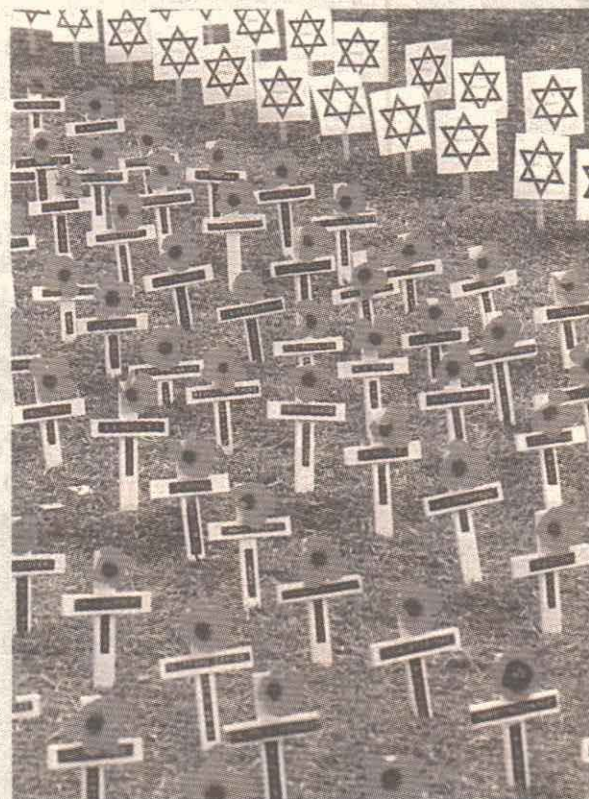
Guest speaker at the service was Mr Hedley Moore, Senior Vice President of the Caulfield Sub branch of the RSL. It has been ten years since Mr Moore had addressed an Anzac day ceremony in Caulfield. Mr Harvey Shaw of the Association of Jewish Ex-Servicemen and Women read a poem written by himself and for the first

time, 57 Stars of David were placed alongside the crosses placed by the RSL, for those Jewish soldiers lost in World War 2.

Mayor Cr Barry Neve laid a wreath on behalf of the City. He was accompanied by the Mayoress Jane and Councillors Russell Longmuir, Norman Kennedy and Noel Erlich and their wives.

Other attendees included Caulfield MLA Helen Shardey and Oakleigh MLA Denise McGill, students from Shelford Anglican School For Girls, Glen Eira College, and Bentleigh West Primary School and members of 2nd Caulfield Scout Group and Glen Eira Guides – all of whom laid wreaths. The Glen Eira Band and the choir also took part.

After the service the participants joined the Mayor and Mayoress for afternoon tea in a marquee which was especially erected in the park.



Rows of poppies and Stars of David pay tribute to lives lost in war.

Volume 18 May 1998



Private Brooke Magill (left) and Private Mark Toogood (both 18) talk to veteran Hedley Moore from Caulfield RSL.



Below: Glen Eira's returned servicemen march to the cenotaph.

Mathew Raymond (9) from East Bentleigh looks at the service medals of 73 year old veteran Bill Cane who served in the 60th Engineers.

Inside this issue...

Heritage Management Plan

Full details of the City of Glen Eira's Heritage Management Plan – preserving our City's architectural heritage. Includes maps of nominated areas and details of how you can have your say in the development of the plan. (Pages 6 and 7)

News:	PAGE
The rising cost of recycling	3
Holiday program subsidy cut	3
Bushland reserve and aviary opens	5
Open Space Strategy	5
Operation Aware – drug and alcohol help	11
Features:	
Development Approvals Co-ordination Committee – DACC	4
Lessons for Life – 78 year old coach	12
Regulars:	
Mayor's column	2
From the Chamber (Council decisions)	2
Arts	8 & 9
Community Diary	10



– Pictures: Les O'Rourke

From the Mayor Mayor's Column



Recently being elected as the second mayor of the city of Glen Eira is a great thrill and honour and my wife Jane and I look forward to the year ahead.

I must congratulate our first mayor, Cr Alan Grossbard and his wife Judi for their efforts during the past year. They worked hard for the city and deserve your congratulations. Cr Grossbard laid the foundations of involving the community at large in the activities of the Council, but this work has to be continued.

We must appreciate that our new city is just over three years old, and there are still considerable, historical divisions within our communities, ie the Caulfield - Moorabbin question. However, we are now Glen Eira, one city and I pledge that during my term as Mayor I will do as much as possible to bring the entire city together.

One community - one city

That feeling of one community - one city must also be fostered between the Councillors and all of the council staff. We must all work together, because if we are working together towards the future, that future will be much brighter.

I encourage all residents to take an active and positive role in our city. Take the time to look around the city. Use the community facilities and get to know what is available. We have some wonderful parks and reserves, such as Harleston Park, Hopetoun Gardens, Allnut Park, Halley Park, Caulfield Park and Boyd Park, amongst others. Go for a walk, have a picnic, play with your children or grandchildren.

Facilities such as Ripponlea and Labassa National Trust properties, the Jewish Holocaust Museum and the Caulfield Arts Complex are other places to visit.

Also, for the older amongst us, there are many ways to involve yourself in community activities. Maybe join a Senior Citizens Club, a University of the Third Age (U3A), an arts group or a lawn bowls or croquet club. There is a host of things to do.

Personal milestones

One initiative I wish to start is the official mayoral recognition for personal milestones of residents - 50th and 60th wedding anniversaries, 100th birthdays and such. If you or a relative or friend is about to reach this type of milestone, please contact the mayoral secretary (9524 3225) to discuss how we can be involved.

— Cr Barry Neve JP

From the Chamber



Subway and footbridge

Council has decided to write to Minister for Transport Robin Cooper and local Members of Parliament rejecting outright the State Government's request that Council take over responsibility for the Tooronga Road pedestrian subway and Oak Avenue footbridge.

Council will also be writing to residents in the area between Rusden Street, Nepean Hwy and the railway line encouraging them to express their opposition to the possible closure of the footbridge. Council felt no suitable convenient alternative routes were available - residents would be required to use round trips in excess of 1.5 kilometres should the footbridge be closed.

Extensions to Jewish Holocaust Centre approved

Approval has been given to the Jewish Holocaust Centre to construct an adjoining two-storey building including an auditorium, offices and a library, in Selwyn Street Elsternwick. The centre provides opportunities for schools wishing to educate students on the events of the Holocaust. The auditorium will provide seating for groups of up to 80.

Council has also asked the centre to comply with the car parking requirement of the original permit, for the provision of 21 car parking spaces at the location, following concerns by local residents over traffic.

Development contribution plan

Council has adopted a new plan for the collection of Development Contribution levies from planning applicants.

All future planning permits (excluding single dwellings) will be required to pay a Drainage Development Contribution levy on approval, to contribute to improvements in drainage infrastructure in the City.

This levy comes as a result of changes in State law and a Council commissioned report which highlighted Glen Eira's historic problems associated with inadequate drainage. The report recommended that Glen Eira's drainage infrastructure be upgraded over the next eight years at a cost of \$15 million. The levy is intended to offset this cost to the Council.

Council's financial position

Council is performing well against its budget for the current year. At the end of February, figures showed a surplus of more than \$300,000, compared to a budgeted deficit of about \$1.5 million for this stage of the year.

The revised projected figures for the remainder of the financial year are expected to show a shortfall of \$2.2 million (against a budgeted shortfall of \$2 million) due in part to the Unfunded Superannuation liability imposed by the State Government.

Go ahead for directory

The combined Community Guide and Business Directory for 1999 has been approved by Council and is expected to be delivered around March and April next year. The new directory will be produced by AdNet Media Australia and will replace the current Resource Guide by providing a single, accessible booklet on Council and community information. The advertising will consist of free listings to businesses operating in the City and paid advertisements.

The information in this publication is of a general nature. The articles contained herein are not intended to provide a complete discussion on each subject and/or issues canvassed, and every attempt has been made to ensure the accuracy of the material. The Glen Eira City Council does not accept any liability for any statements or any opinion, or for any errors or omissions contained herein.

Councillor contacts

JASPER WARD



Cr Russell Longmuir
Ph: 9557 4438
Fax: 9557 8717



Cr Barry Neve
Ph: 9524 3225 (Council)
Fax: 9563 9403 (AH)
Mobile: 0412 218 468

ORRONG WARD



Cr Noel Erlich
Ph & Fax: 9533 0054 (H)
Mobile: 0412 218 485



Cr Alan Grossbard
Ph & Fax: 9533 0052 (H)

MACKIE WARD



Cr Norman Kennedy
Ph: 9564 8395
Fax: 9564 8402
Mobile: 04 1937 9540



Cr Veronika Martens
Ph/fax: 9579 7072 (H)
Ph only: 9579 0297 (H)
Mobile: 0419 218 474

Glen Eira City Council

PO Box 42 Caulfield South 3162

Phone: 9524 3333

Fax: 9523 0339

Email: mail@gleneira.vic.gov.au

Internet: <http://www.gleneira.vic.gov.au>

DEADLINE FOR THE NEWS

Editorial contributions and advertisement bookings are welcome for the *Glen Eira News*.

Please submit material at the beginning of the month prior to the issue in which you wish it to appear.

The next issue of *Glen Eira News* will be released on 8-10 June. The deadline is **Monday 18 May**.

Advertising rates are available on application.

To submit editorial material for consideration, fax 9523 0339, email on mail@gleneira.vic.gov.au or write to PO Box 42, Caulfield South 3162.

Quick Quiz No. 6

When did the Bentleigh Club open its doors and why was it inaugurated?

(Answer on Page 11.)

Community Grants 1998/1999

Local Community organisations and groups are invited to apply for funds through Council's Community Grants Program.

An information package with application forms is available for collection from the Service Centre or by telephoning **9524 3333**.

Closing date is 5pm on 30 June 1998 and it will not be possible to consider late applications.



The rising cost of recycling

Glen Eira City Council spends \$800,000 each year, collecting recyclable bottles, tins and cartons. Collection by contractor Oakleigh Recyclers, from crates left by householders by the kerbside, takes in 32,000 cubic metres annually, or 3600 tonnes in weight. That's 3600 tonnes less that is sent to the tip. These co-mingled recyclables include glass, plastic soft drink, milk and juice bottles, milk cartons, and steel and aluminium cans. Recycling costs are increasing, and the environmental benefits of recycling some products, such as plastic, are being questioned. Competing with raw materials, which are cheaper than recycled goods, and finding markets are further problems which affect the viability of the service. PETRINA DAKIN visited Oakleigh Recyclers, where our bottles and plastics go.

A cacophany of smashing glass fills the air. Used bottles collected from local restaurants are being poured off the back of an Oakleigh Recyclers truck into the entrance way of the conveyor belt.

Green, amber, white – each colour has to be separated. Shards, stumps and some intact bottles rattle along the conveyor belt, as a team of workers in gloves sort them with practised skill.

The next run on the conveyor belt will be plastic. The workers will be tossing bottles in several different directions, their precision hitting the right bale for the right kind of plastic.

Across the yard, there is a sea of plastic. Heaped high are the recyclable plastics: PET bottles – soft drink containers – and milk containers (HDPE). These will be compacted into blocks and sold to manufacturers of plastic recycled goods such as partitioning for offices and garbage bins.

Jumbled up with the recyclables from kerbside collections is, unfortunately, plenty of other materials – plastics which do not have a market, and are of no value, or just plain rubbish. The sorting is time consuming and the discarded material ends up at the tip.

The Oakleigh South business also handles steel tins, aluminium cans, and cardboard milk cartons. The cartons are shredded and used for products such as computer paper.

Recycling is an expensive business – it is labour intensive, both in collection and sorting – and Councils across the country are facing rising costs and problematic markets for the material. At the moment, recycled plastic and cardboard cannot be reused for food packaging, and must be used in other applications.

Eric Wood runs Oakleigh Recyclers, said: "It's a messy business we're in, but in the end, we have to provide quality material. That takes a lot of work."

Eric has been a bottle merchant since 1955 and widened his business to recycling other materials some years ago. (His office window is filled with unusually shaped bottles which he has collected over the past four decades.)

He says residents can help make recycling easier, by checking carefully which plastics they put in the recycling crate – only those marked with a 1, 2 or 3 in a triangle, on the base of the bottle. Rinsing containers – particular milk cartons! – is a great help to keep down odour.

"One of our biggest challenges is picking out pieces of discarded crockery – plates, cups and saucers – which get thrown out with glass bottles, often by restaurants. Ceramics have a much higher melting point than glass, so that when the glass is in the furnace, it will stay intact and end up contaminating the recycled bottles. Please, throw broken crockery in the bin!"



Above; Oakleigh Recyclers owner Eric Wood sits in front of the sea of plastic that is collected from kerbside collections.

Left; Staff work busily to separate different coloured glass as it travels along a conveyor belt.

CO-MINGLED RECYCLABLES

Our community recycles:

- Glass • Aluminium cans • PET plastic (soft drink bottles) – labelled 1 • HDPE plastic (milk containers) – labelled 2
- PVC (juice bottles) – labelled 3
- Liquid paper board – milk cartons
- Steel cans

Kerbside collection:

50,000 properties (residential)
84 per cent participation rate
32,000 cubic metres collected annually
3,600 tonnes collected annually
Cost \$790,000 for collection
\$10,000 for stolen crates
TOTAL \$800,000

Holiday program subsidy cut

The Federal Government has cut Councils' school holiday program operational subsidies, effective from the July school holidays.

Glen Eira City Council's Fantastic holiday program will lose \$62,265 annual funding for vacation programs, and will be forced to raise fees.

The Federal Government will instead offer increased Childcare Assistance to cover part of the program fees, although families will have to be assessed for financial need through Centrelink offices.

Glen Eira City Council's Human Services Director Judy Leitch said the Federal Government expected to provide the increased Childcare Assistance to Federally funded holiday programs, which covered Glen Eira's holiday arts program.

However, the Federal Government had not yet announced whether it would give the same assistance to State Government funded programs, which includes Caulfield Recreation Centre and Moorleigh Community Village.

"We're waiting to see the outcome of negotiations between the Federal and State governments.

The original deadline for the announcement was February," Ms Leitch said.

Council was unable to run the Teenies program during the April school holiday program, due to falling numbers, but provided child care to families as an alternative.

Ms Leitch said the Federal Government had acknowledged that fees to parents would rise, and had instructed Councils on how to re-budget and restructure fees.

The 1997 Federal Budget announced the reforms to school age care, which included the removal of the block grant to States for vacation care, withdrawal of operational subsidies, and the increase in Childcare Assistance. (In Victoria, the Federal and State Governments cost-share 144 vacation care services.)

All after school school care programs have also been affected by the 1997 Budget, with operational subsidies ceasing from 27 April. This will impact on dozens of schools and centres around Glen Eira which offer before and after school care.

Place names saga

The News is disappointed to report that there is still no news on the suburb name changes issue. Due to meet last month, the Place Names Committee rescheduled its proposed decision to the second week in May. Issues with Australia Post and Government departments are still being addressed.

The survey carried out by Glen Eira resident Steve Partridge was completed and sent to the Committee. The Committee stressed that as suburb names are such a significant issue, affecting residents, businesses, emergency and other services, a decision could not be made in haste and must be thoroughly researched. Indications are that official notification will be given around mid June, 1998 after approval from the Minister.

Mediation process minimises appeals

Glen Eira City Council's planning application decision-making process is one of a kind.

Planning approvals

The Development Approvals Co-ordinating Committee offers objectors to planning applications the opportunity to voice their objections and gives applicants a forum in which they can address these objections personally. The committee comprises two planning staff (permanent members) and one other senior Council staff member (co-opted monthly).

City Development Director and DACC chairman, Jeff Akehurst, said the committee is the only one of its kind in Victorian Local Government and he believes it is an "efficient and fair" system. He said Council has no specific statistics as proof that the process reduces appeals lodged against planning permits with the Administrative Appeals Tribunal. He believes sufficient anecdotal evidence supports this.

Mr Akehurst said many municipalities have been experiencing a "boom" in medium density housing development, and it is "understandable" that applications have also increased dramatically. He said the City was this year dealing with applications for twice the number of dwellings it dealt with last year.

The DACC meets weekly for a full day's application hearings, but has a backlog of applications and objections waiting to be decided months in advance.

Mr Akehurst said 55 per cent of applications received by Council go through the DACC process. Planning permit applications which have received objections or are contentious are presented to the committee in front of the applicant and any objectors who choose to attend. Objectors are then given the opportunity to speak and the applicant is then given time to "answer" these objections.

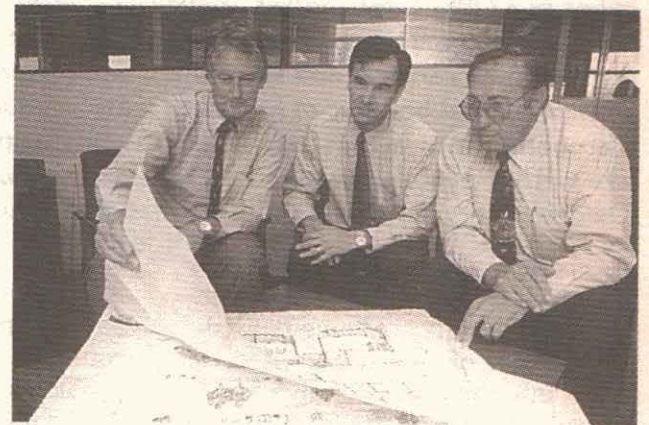
Given all this information, the committee then consults and discusses the application and either grants or denies the application.

"We don't always achieve a resolution, and some people obviously won't get what they want, but at least they have the opportunity to have their say.

"They get their 'day in court' without having to go to court, and most people seem happy to have been heard even if they don't win. Obviously the best result is a 'win-win' and through compromise this can often be achieved," Mr Akehurst said.

He said people who lodged an objection to a planning application were invited to the DACC meeting, but were under no obligation to attend.

"It's a service we offer to give them a 'hearing'. And ultimately they do have the option to go to the AAT if they still feel the need, or if they are not happy with the result," he said.



(From left) DACC Chairman Jeff Akehurst with co-opted committee members Tom Dunbar and Carl Russo (Development Services Co-ordinator and permanent DACC member Anne Grogan not pictured).

The DACC operates with full delegation from the Council and in this respect the decisions of the DACC are the decisions of the Council. By virtue of the Planning and Environment Act, Council has a role of "facilitating appropriate development". This is the primary role of the DACC - to determine what is "appropriate development" having regard to town planning law and Council policy.

Mr Akehurst said Glen Eira City Council's DACC planning application process was acknowledged as best practice by the State Government.

- Myrine Hawksworth

Community groups get it together

The newly formed Glen Eira Community Learning Network has launched a new brochure on the six community services providing adult learning opportunities across the City.

The Network's brochure has also been reproduced on the Internet, via Glen Eira City Council's web site.

Glen Eira Mayor Cr Barry Neve attended the brochure launch, and said he was most impressed to see community groups working together towards a common goal.

The evolution of the *Glen Eira Community Learning Network* from scattered community groups to a united working group has been quite remarkable. It began as a regional marketing and funding strategy from the Council of Adult, Community and Further Education (ACFE) for adult learning groups in the Glen Eira area, but the Network has since taken on a life of its own.

After advertising in the local paper and producing its own brochure, the *Glen Eira Community*

Learning Network has continued to meet regularly to discuss common issues and goals.

In an atmosphere of camaraderie and friendship, the group officially launched their brochure. The group also announced access to a web page through Glen Eira City Council's site. Adult education information in Glen Eira can now be easily accessed and will be updated quarterly. Just go to <http://www.gleneira.vic.gov.au/>

The *Glen Eira Community Learning Network* comprises:

- Caulfield Adult Literacy Group, 9532 8319
- Moongala Women's Community House, 9570 3468
- Godfrey Street Community House, 9557 9037
- Caulfield South Community House, 9596 8643
- U3A at Moorleigh, 9570 3929
- U3A at Glen Eira, 9572 0571.

Contact any of these groups for a copy of the brochure.

Mayor Cr Barry Neve (rear left) and members of the Glen Eira Community Learning Network prepare to surf the net.



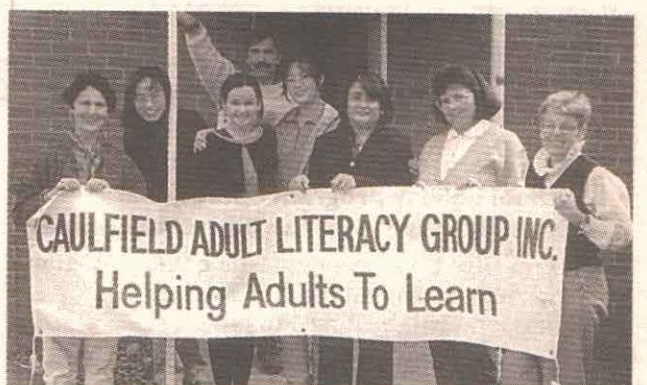
Literacy Group's new home

Caulfield Adult Literacy Group officially opened its new headquarters at 6 Maple Street, Caulfield, at its AGM on 19 March.

Then Mayor, Cr Alan Grossbard, opened the new centre and was guest speaker at the AGM.

The group was moved from Oak Tree House and set up much expanded office and classroom space, and the bonus of a computer room and kitchen, enabling the group to expand the range of programs it offers, including the new cooking group.

However, the group is concerned that the new site may be temporary, with Council advertising for expressions of interest to redevelop the Maple Street building and Princes Park area. Cr Grossbard said it was possible the group will remain at Maple Street, even if the building is redeveloped.



Caulfield Adult Literacy Group co-ordinator Helen Yandell (right) and members of the cooking course, at the entrance to the group's new home.

This correspondent would like to thank the participants of the group's first cooking class for the delicious lunch they provided when the News dropped in to take a photo. (The cooking course is aimed at improving literacy through students explaining recipes and guiding preparation, with each student taking turns to bring a traditional recipe from their country of birth. The latest group included: Polish, Indonesian, Chinese, Malaysian and other wonderful cuisines.)

Bushland reserve and aviary opens

Glen Eira Mayor Cr Barry Neve and students from Ormond East Primary School (pictured right) got "up close and personal" with some bushland friends at the launch of the Bushland Flora Reserve and Aviary at Caulfield Park recently.

The reserve was officially opened by Cr Neve and environmental crusader and pioneer of the indigenous plant movement Darcy Duggan last month.

Cr Neve said the reserve and aviary represented passion and vision and said it was "fantastic" to involve children from local schools in both the launch and the development of the plant life in the reserve.

This exciting project presents a unique native bushland environment in an urban setting, and an aviary, whose inhabitants include a menagerie of wonderful bird characters.

The Aviary has been in existence since 1972 but was given a new lease of life when redevelopment started in March 1997. The land surrounding the Aviary includes a new river course, bush tracks, bridges and 4000 indigenous plants to demonstrate how beautiful native gardens can be.

In his speech Mr Duggan commented on the tendency to save our building and architectural heritage and miss the rich "grass roots" heritage associated with plants and wildlife.



The plants in the bushland reserve will reach maturity over the next few years, providing an abundance of colour and variety of species – including Red Gum Woodland, Tea-tree heathland and a Grassy Low Open Forest believed to be the original plants of this area.

The reserve gives people the opportunity to learn how to develop their own native gardens which require little maintenance and water and have the added bonus of attracting native birds into your backyard.

In the future it is planned visitors will be able to buy native plants from the reserve and gain expert advice from the staff who are happy to provide information sessions to schools and the general public. Native plants propagated in Park Services Nursery will be utilised when landscaping Glen Eira's public spaces such as roundabouts and strips, returning local plants to their original region.

The Glen Eira Bushland Flora Reserve and Aviary at Caulfield Park is open daily and can be easily accessed via 721 Inkerman Rd, North Caulfield. Contact: 9524 3323.

All that open space

Glen Eira City Council has developed a **draft Open Space Long Term Strategy – providing a comprehensive long term plan to guide the development and management of Council's open space system.**

The strategy involves a review of State Government, regional and local policies that impact on open space in Glen Eira, which looks at general recreation trends, open space available in adjacent municipalities, Glen Eira's demographics and a physical analysis of the existing open space system. An extensive community consultation process was undertaken as part of the review.

The Recreation Advisory Committee was chaired by Councillor Veronika Martens, who said: "The strategy is very comprehensive and provides a much needed long term plan to improve Glen Eira's open space system". Cr Martens acknowledged the hard work of the Committee which comprised a

representative from all wards: Danielle Hastings, Joan Hardy, James Barrett, Jack Sheahan and John White.

The review recommends a long term action plan to build on the existing open space system. The strategy identified areas in the municipality as deficient in open space, but emphasised "quality" rather than "quantity" as the main issue.

The strategy provides concept plans for all of the larger parks in the City and shows potential recreation opportunities that may be able to be accommodated in each park, for example; the concept plan for Bentleigh Recreation/Hodgson Reserve includes a new adventure playground, native landscaping, a BBQ/picnic area and a sealed track

around the perimeter of the park for shared activities, ie walking, cycling. These concept plans are indicative only and subject to budgetary funding, community consultation and the detailed development of masterplans.

Copies of the draft strategy will be available for comment in Council's libraries throughout the municipality and on Council's web site from 4 May to 6 July, 1998. Council's web site address is: gleneira.vic.gov.au and the document will be on the home page under the "What's New?" section.

Any information offered and written responses received will be considered in the final development of Council's Open Space Long Term Strategy. Written submissions should be lodged no later than 6 July, 1998 and mailed to "Draft Open Space Long Term Strategy", Glen Eira City Council, PO Box 42, Caulfield South 3162. For any queries about the draft Open Space Strategy contact 9524 3333.

Council aims for safety

Glen Eira's Chief Executive Margaret Douglas (centre) and Directors (clockwise from left) Jeff Akehurst, Andrew Newton, Jim Mackinnon and Judy Leitch have personally endorsed Council's **Occupational Health and Safety Policy.**

The policy was developed by Council to promote a safe and healthy work environment for employees, contractors, customers and visitors. The endorsement represents a commitment by the Executive to supporting a long term programme aimed at ensuring Glen Eira City Council will:

- provide safe plant and systems of work,
- provide written procedures and instruction to encourage safe systems of work,
- ensure compliance with legislative requirements and "best practice" standards,

- provide employees, contractors and customers with regular information, instruction, training and supervision to ensure their safety and minimise loss, and
- provide support mechanisms which will assist employees to maintain or improve their psychological and physical health.



4-year-old kindergarten

Council operates a Central Enrolment System for Community-based kindergartens within the municipality of Glen Eira.

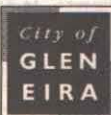
Applications open on 1 May, 1998 for parents to enrol their children to attend 4-year-old kindergarten in 2000. Children whose birthdays fall between 1/5/95 and 30/4/96 (inclusive) are eligible.

Enrolment forms are available from community-based kindergartens or the Service Centre, telephone **9524 3333.**

Central Enrolment fee: \$8 per child (\$5 for health care card holders).

Enrolments for 4-year-old kindergarten in 1999 are presently being processed.

For 3-year-old kindergarten enrol directly with the kindergarten of your choice.



Glen Eira Heritage Management Plan

Proposed heritage areas announced

Glen Eira City Council is about to embark on an exciting initiative to protect and enhance buildings and areas of heritage significance within the municipality.

The Council has recently resolved to put into action a number of the recommendations of the Glen Eira Heritage Management Plan.

The Plan identifies 18 Heritage Areas in the City of Glen Eira. These areas demonstrate important eras in the growth of the municipality and survive with a comparatively high level of integrity. A map of the areas is shown on the opposite page with a description of each area. As well as the heritage areas, a number of individually significant buildings outside these areas have been identified.

What controls may be introduced?

The statutory planning controls which may be introduced into the Glen Eira Planning Scheme have been prepared by the State Government and are standard provisions to be used throughout Victoria. These controls, known as a Heritage Overlay, deal with the following:

- demolition of buildings,
- subdivision or consolidation of land,
- constructing a building,
- external alterations,
- displaying signage, and
- painting of previously unpainted surfaces.

In most circumstances, a planning permit would be required to undertake any of these works.

The Heritage Overlay provisions set general parameters but Council must determine any detailed controls and their implementation.

More specific controls relating to internal alterations, paint colours and tree protection can be introduced in special circumstances.

To assist Council in assessing applications for works, Heritage Guidelines are being developed which will provide advice on maintenance and repair of buildings and the design of alterations and new buildings.



Your rights as a property owner or occupier

Your views on the Heritage Management Plan and its implementation are important to Council. There are many opportunities throughout the process to participate and make submissions and comment.

With the introduction of heritage controls, Council will have the right to require planning permission for demolitions and construction or alterations to detached dwellings. Residents will have the right to participate in the development process in their neighbourhood in areas where previously no rights existed.

Prior to any controls being introduced you can:

- speak to Council Officers or Heritage Advisor for further advice,
- send your comments/letters of support or concern to Council,
- contact local action groups,
- speak to your ward Councillor,
- when the amendment is on exhibition send a formal submission containing your comments to Council,
- attend any planning conferences that may be scheduled, and
- make submissions to any Ministerial Panel established to consider comments received in relation to the amendment.

What is the Glen Eira Heritage Management Plan?

The City of Glen Eira Heritage Management Plan is an overall strategy to encourage the maintenance and enhancement of buildings and areas identified as having heritage significance.

Statutory initiatives include amending the Glen Eira Planning Scheme to introduce Heritage Overlay controls. Non-statutory measures include preparation of detailed policies and guidelines, continuation of the free Heritage Advisory Service and the establishment of a reference library of conservation literature.

The Heritage Management Plan identifies and recommends for planning scheme protection some 18 Heritage (or Urban Conservation) Areas which demonstrate important eras in the growth of the municipality and survive with a comparatively high level of integrity. In addition, over 200 individual properties have been identified for their local, regional or statewide heritage significance.

The Planning Scheme Amendment Process

The planning scheme amendment process to introduce heritage controls has the following major stages:

August 98

A Planning Scheme Amendment is prepared

September 98

Public Exhibition of the Planning Scheme Amendment for two months. Notification of persons with properties directly affected by the proposed changes.

Amendment on display at the City Offices and the Department of Infrastructure.

November 98

Submissions will be received by Council until the close of the exhibition period.

Late 98

Planning conferences to be held to give people making submissions an opportunity to verbally express their views to council.

Late 98 – early 99

Council Meeting to consider submissions.

A decision will be made on whether to proceed with the amendment unaltered, to alter the amendment and proceed, or to abandon the amendment.

Early 99

Independent panel appointed by the Minister to hear submissions and evaluate amendments.

Early – mid 99

Council considers the panel recommendations and can –

- (1) adopt the amendment with or without any changes suggested by the panel or
- (2) abandon the entire amendment.

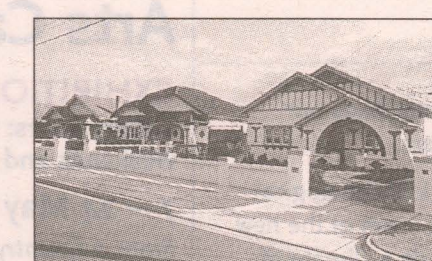
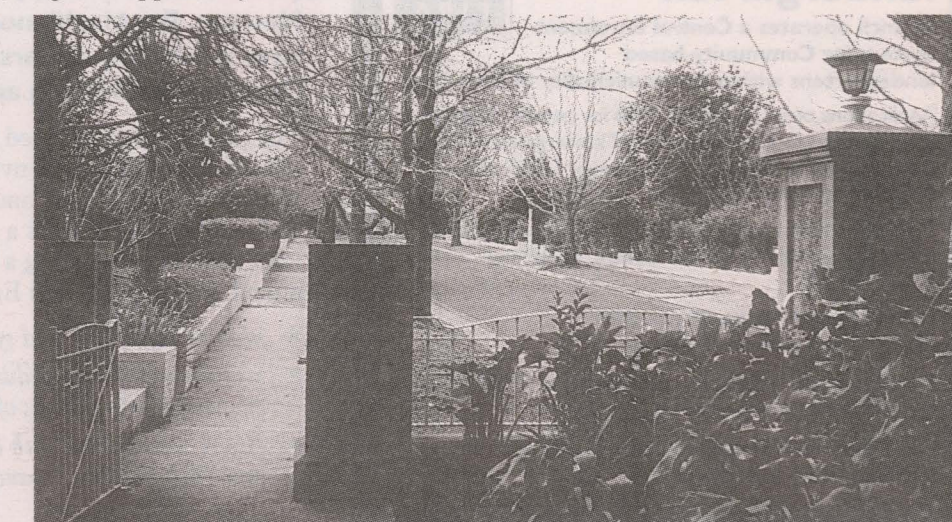
The dates shown in the above schedule are approximate only and subject to change.

For further information:

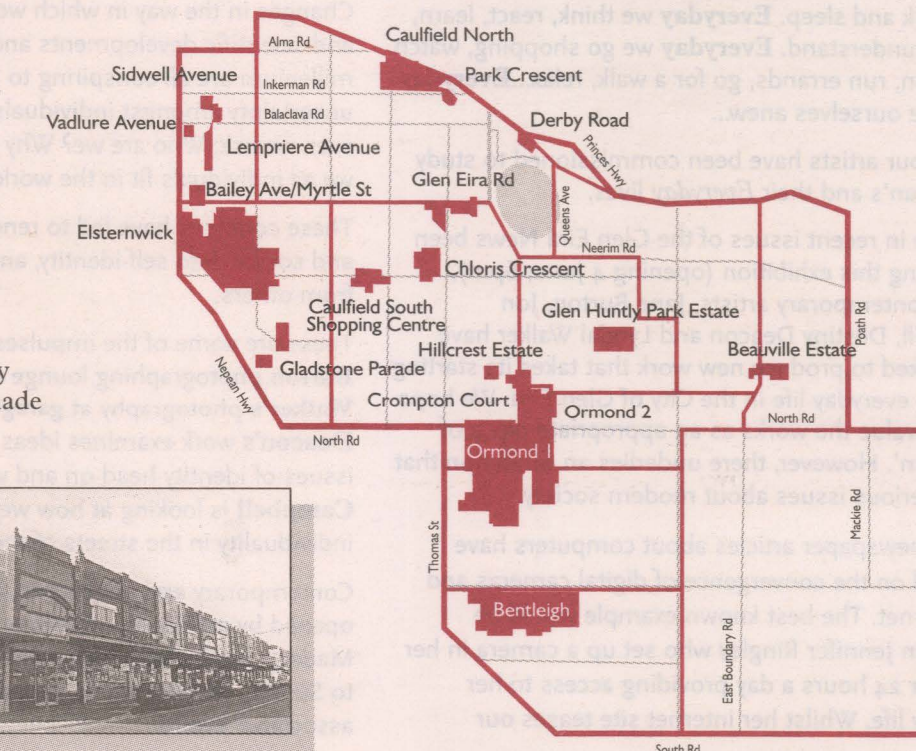
For further information on Council's Heritage Management Plan contact the Planning Department on 9524 3374 or call into the offices. The Heritage Management Plan booklet is available from the Service Centre or Planning Counter.

Council's Heritage Advisory Service is a free service to residents and ratepayers. Bookings can be made by ringing the above number.

If the controls are introduced you may, depending on the particular proposal, have the ability to submit comments. If the proposal is a formally advertised planning permit, you will be able to make submissions to Council and have the right to appeal any Council decision.



Proposed Glen Eira Heritage Areas



Heritage areas defined

Bailey Avenue/ Myrtle Street, Caulfield –

is an area with Interwar houses of distinctive character built by William Bailey.

Beauville Estate, Murrumbidgee –

is a residential area of Interwar housing built as the first large housing estate by the A.V. Jennings Construction Co. to incorporate a range of features such as made roads, shops and recreation facilities.

Bentleigh –

is a residential area of Interwar bungalows and villas demonstrating the ideals of the Garden Suburb movement.

Caulfield North –

is a residential area of late Victorian and Post Federation houses which are substantially intact.

Chloris Crescent, South Caulfield –

is a residential area and tram depot built at the same time during the interwar period.

Crompton Court, South Caulfield –

is a small residential area of Spanish Mission style, Interwar housing.

Derby Road, North Caulfield –

includes the Derby Road shopping centre, railway station and tramway.

Elsternwick –

is predominantly residential buildings and commercial buildings in Glen Huntly Rd from the Victorian, Post Federation and Inter War periods.

Gladstone Parade, Elsternwick –

is a residential area of late Victorian period houses.

Glen Eira Road, Caulfield –

is a residential area of Victorian and a range of Interwar houses of different styles.

Glen Huntly Park Estate, Carnegie –

is a residential area of the Interwar period which demonstrates the principles of the Garden Suburb movement.

Hillcrest Estate, South Caulfield –

is a residential estate of Interwar housing which was the first housing estate undertaken by A.V. Jennings Construction Co.

Lempriere Avenue and Greenmeadows Gardens –

is a residential area of Interwar buildings set in a landscaped street environment with recreational parkland to the south.

Ormond 1 & 2 –

includes residential areas and commercial land uses from the Interwar period.

Park Crescent, North Caulfield –

is a residential area of Interwar housing adjacent to Caulfield Park.

Sidwell Avenue, North Caulfield –

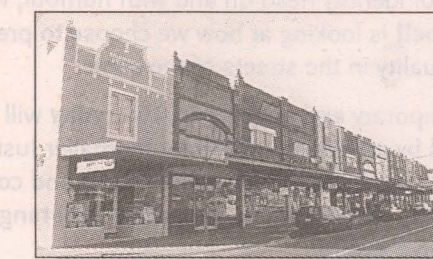
is a residential area of Interwar houses and flats.

South Caulfield Shopping Centre –

is a commercial area on Glen Huntly Road of prominent Victorian and Interwar buildings such as the Church of the Holy Cross, the State Savings Bank and the state school.

Vadlure Avenue, North Caulfield –

is a residential area of Interwar housing including exceptional Spanish Mission and English Domestic residences.



Have your say

Before introducing any changes to the Glen Eira Planning Scheme to introduce Heritage Controls, Council is keen to hear the views of people who are for, against or indifferent to such controls. Owners and occupiers of properties within identified heritage areas or individually identified properties have been directly advised of the proposed controls and their likely implications.

The more formal process of amending the Planning Scheme to introduce heritage controls will not occur until later in the year. The timetable on page 6 outlines the stages and approximate dates for introducing heritage overlay controls.

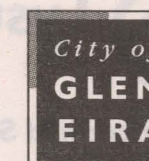
Written submissions will be considered by Council prior to commencing the amendment process, and should be sent in by Friday 15 May 1998 to:

The Strategic Planning Department, Glen Eira City Council
PO Box 42, Caulfield South 3162.

Glen Eira City Council

Heritage Advisory Service

Glen Eira City Council provides a free heritage advisory service. Heritage Adviser Andrew Ward is a well known architect and architectural historian.

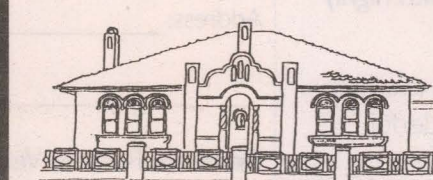


Andrew can offer free advice:

- to property owners with respect to any alterations and conservation work, and
- to builders and trades people on relevant conservation/restoration techniques and material sources for specific tasks.

Andrew is available for on-site meetings or can be visited at the Council offices. Please ring in advance for an appointment.

For bookings or further details contact Council's Strategic Planning Department on 9524 3441 or by fax on 9524 3432.



ARTS

EXHIBITIONS

Everyday – 5 to 28 June

Everyday we wake up, go to work or school, socialise, eat, drink and sleep. **Everyday** we think, react, learn, believe, understand. **Everyday** we go shopping, watch television, run errands, go for a walk, relax...**Everyday** we make ourselves anew...

and so four artists have been commissioned to study Glen Eira's and their *Everyday* lives.

We have in recent issues of the Glen Eira News been promoting this exhibition (opening 4 June, 6pm), where contemporary artists, Jane Burton, Jon Campbell, Destiny Deacon and Lyndal Walker have been asked to produce new work that takes its starting point as everyday life in the City of Glen Eira. We hope viewers value the works as an appropriate piece of 'good fun'. However, there underlies an exhibition that raises serious issues about modern society.

Recent newspaper articles about computers have reported on the convergence of digital cameras and the internet. The best known example would be American Jennifer Ringley who set up a camera in her bedsitter 24 hours a day providing access to her everyday life. Whilst her internet site teases our

voyeuristic desires, it more importantly feeds our continual intrigue of the lives of others.

Changes in the way in which we work, technological and scientific developments and the onset of the new millenium are all conspiring to provide a climate of uncertainty amongst individuals. Today, more than ever, we ask: Who are we? Why are we? and Where do we as individuals fit in the world today?

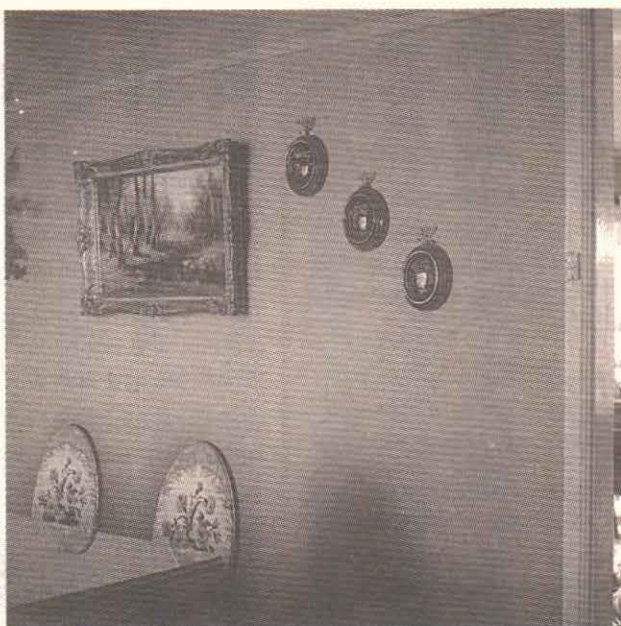
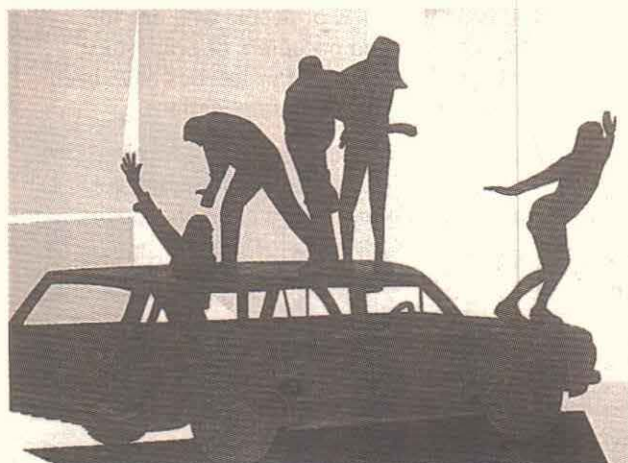
These concerns have led to renewed interest from art and society into self-identity, and into how we differ from others.

These are some of the impulses that lie behind **Jane Burton** photographing lounge rooms, and **Lyndal Walker's** photography at garage sales. **Destiny Deacon's** work examines ideas of who we are, tackling issues of identity head on and with humour, while **Jon Campbell** is looking at how we choose to present our individuality in the streets of the same.

Contemporary and interesting, **Everyday** will be opened by architect and former footballer Justin Madden on Wednesday 4 June at 6pm and continues to Sunday 28 June and is supported by a range of associated events.

Right: A lounge room in Glen Eira photographed by Jane Burton.

Below: An example of Jon Campbell's quirky pop style painting.



Lysterfield Society

The **Lysterfield Society** is a Glen Eira Arts Complex initiative aimed at attracting supporters of the Arts to enjoy and appreciate the wonderful and diverse range of cultural activities the Complex offers, including programs in visual arts, theatre, lectures and workshops, and musical events. In 1998, the Glen Eira City Gallery has staged a new and exciting range of contemporary exhibitions: *Containment*, *Episodes*, *Talking Pictures*, *Australian Craft Showcase* and shortly *Everyday*. Most of these exhibitions have been complemented with highly successful associated talks and seminars.

Membership to the Lysterfield Society is available on three different levels and offers wonderful benefits. Further information and membership brochure is available by contacting Rosanna Verde on 9524 3287.

For more information

The Complex has a wide range of information available. Please indicate which area is of interest to you and we will include you on our mailing list(s). Feel free to tick all boxes if desired.

- ☐ Exhibitions
- ☐ Seminars/lectures
- ☐ Classes/workshops
- ☐ Lysterfield Friends Society
- ☐ Concerts/music performances
- ☐ Arts & quarterly newsletter

Name: _____

Address: _____

Postcode _____

Send to: Rosanna Verde, Arts Liaison Officer,
Glen Eira Arts Complex, PO Box 42, Caulfield 3162.
Fax: 9524 3399 or email: rverde@gleneira.vic.gov.au

Arts Calendar for May

EXHIBITIONS

Gallery hours: 10am to 5pm daily, 1 – 5pm weekends and public holidays. Free admission.

7 – 24 May

From a Country Palette, Di and John Koenders – paintings of Australian country scenes and bird life.

27 May – 7 June

Birdman Series by **Sylvia Mair** featuring pastels, life drawings, linocut and woodblock printing, and **Annette Edwards'** new works of linocut and etchings.

PERFORMANCES

Auditorium

Saturday 9 May

Serguei and friends in Concert at 8pm. An evening of popular light classics. Tickets: \$18 adults \$15 concession. Bookings: 9553 8033 or 9532 9108.

Sunday 17 May

Medieval Carnevale Rosemary Hodgson, Kate Burridge, Rachel Snedden, Robert Ely, Helen Dell and Nicole Weatherill perform 12th and 13th century songs and music.

Second show in Early Music and Dance Series. Commences 2.15pm. Tickets: \$12 adult \$8 concession. Bookings: 9699 8417.

Saturday 23 May

Rita Reichman will perform a stunning all Chopin program in the first of three Classic Virtuosi Series. Commences 8.15pm. Tickets (three recitals) \$60 adults \$45 concession. Individual tickets \$25 adults \$19 concession. Bookings: 9685 5111.

Sunday 24 May

Aura and Body Benefit Concert – featuring vocal music from classical opera to modern musical theatre. Commences 2pm. Bookings: 9852 3885.

Friday 29 May

McKinnon Big Band music from the swing era of the 30s, 40s and 50s. Bookings: 9578 0844.

Saturday 30 May

Ida Doubleday Bequest Recital featuring harpist Megan Forse. Tickets: \$12 adults \$9 concession. Bookings: 9571 0850.

Tuesday 2 June

Wesley College in Concert. Commences 7.30pm. Bookings: 9528 2522.

Sunday 7 June

The Hooley Dooley's in Concert. Bookings: 9563 8799 or 9727 2996.

12 – 13, 17 – 20 June

Lipstick Dreams by Helen O'Connor and Simon Hopkinson in the Theatre. Performances 12 – 13, 17 – 20 June at 8pm, matinee on 14 June at 2pm. Tickets: \$14 adults \$11 concession. Bookings: 9553 0148.

Brought to you by the Glen Eira Arts Complex
Corner Glen Eira and Hawthorn Roads, Caulfield
Ph: 9524 3287 Fax: 9524 3399
Email: rverde@gleneira.vic.gov.au
Website: www.citysearch.com.au/mel/gleneiraarts

Everyday Expressions and Excursions, for *Everybody*

Everyday is about the relationship of Art and everyday life. The associated programs invite you to involve yourself in the exhibition and in the life and culture of this community. There's something for everybody in **Everyday**.

Children and young people (to year 9) have a fabulous opportunity to have their views displayed as a part of the exhibition. The Arts Lounge at the Glen Eira Arts Complex will be given over to the visual artworks of young Glen Eirans and their written views of the everyday will be displayed in the

libraries and published in the Glen Eira News and on the internet page. The theme is **Everyday**, so the entry may be a story or picture of home life, or street life or school life... We want to display as many views as possible and there is no entry fee. Call the Arts Programmers for an entry form and send us your interpretation of everyday life in Glen Eira.

Another way to view our fair city is through the window of a bus. We are running four special mini bus tours, exploring various historical and cultural perspectives of Glen Eira, charting the changes from

aboriginal life on the wetlands, through settlement, boom and bust, wars and migration, to the suburbs of yesterday and today.

Darren Green is a local artist who is fascinated by the everyday. He will be involving local residents in choreographed performance art which challenges the notions of the **Everyday**. You will be able to catch his work throughout the city during the exhibition dates. Details will be published in the next issue of the GE News.

From a country palette, Di & John Koenders – 7 to 24 May

Those who yearn for an Australia of days gone by might also yearn for the return of Di & John Koenders with their paintings of Australian country scenes and birdlife. The Koenders staged a highly successful exhibition last year and are back with more work evoking the spirit of Australian country. Di Koenders specialises in bird and wildlife studies, while John paints Australian landscapes depicting the spirit of country life.

The exhibition opens on Wednesday 6 May at 6pm, and continues to Sunday 24 May.

Annette Edwards & Sylvia Mair, 27 May to 7 June

Sylvia Mair has a knowledge of a number of art mediums including pastels, life drawing, linocut and woodblock printing. In this exhibition, The Birdman Series, Mair presents collages featuring a cartoon character of her own invention. Like many successful cartoon characters, 'Birdman' reveals human frailties and vulnerabilities. An exhibition for adults and children alike.

Artist **Annette Edwards** is a well known Melbourne printmaker with expertise in a range of print making media including linocut and etching. Come and enjoy this exhibition of her new work.

Exhibitions opens 6pm 26 May and continues to Sunday 7 June.

Henry Wenig and the Labassa Trio to visit our schools

As part of the arts programmer's education initiative, Glen Eira schools will have the unique opportunity to book this trio to perform, workshop and explore their music and instruments with the students. The Labassa Trio is keen to bring their skills to the local children and youth in an informal yet informative way. If you are interested in this opportunity contact the arts programmers on 9524 3402.

Classic Virtuosi Concert Series I:



The Glen Eira City Council is proud to present four of Australia's finest artists in a special inaugural classical concert series. Each year, the Arts Complex will bring many of the best classical artists and ensembles to

perform in the comfortable and inviting ambience of the Glen Eira Auditorium.

The artists in this first series have all performed to great acclaim within Australia, but have also appeared on the major concert stages of the world.

On **Saturday 23 May at 8.15pm**, **Rita Reichman** on piano will perform an all Chopin recital series. Rita began her career as a child prodigy at the age of three. At the age of 10 she made her American debut and

began studying with the renowned Rudolph Serkin. At 13 she gave a triumphant performance with the Detroit Symphony with Arthur Fiedler conducting. She has twice performed for US Presidents at the White House and has performed throughout Europe, America and Australia.

Three concert series (Geoffrey Tozer, piano on 11 July and Asmira Woodward-Page, violin and Len Vorster, piano on 8 August) are offered, and are available as a subscription series at specially reduced prices, or individually.

Cost: Single recital tickets \$25 adults, \$19 concession
Series of three: \$60 adults, \$45 concession

Telephone bookings: 9685 5111 **Over the counter:** The Malthouse Box Office, CUB Malthouse, 113 Sturt Street, South Melbourne or Service Centre, Glen Eira City Council, corner Glen Eira and Hawthorn Roads, Caulfield. **Information and brochure:** 9524 3287.

SIMPLY BALLROOM

Dance until you drop to the sounds of

THE TED WHITE BAND



Sunday, 28 June

2pm to 5pm

at the **Glen Eira Arts Complex**

corner Hawthorn and Glen Eira Roads, Caulfield

Warm up on a winter's day and enjoy a great afternoon of social dancing on the superb *sprung floor* of the Auditorium.

- free practice hour from 1pm
- delicious afternoon tea
- lucky door prize
- free parking
- spot prizes and

Special guest appearance by Australian National and South Pacific Accordion Champion

Bernadette Conlon

Tickets \$20

available through the Service Centre, corner Hawthorn & Glen Eira Roads, Caulfield

Bookings: 9524 3333 **Enquiries:** 9524 3371

Future dates for your Dance Diary: Sunday 26 July and Sunday 30 August

A Glen Eira Arts Complex Initiative



Oak Tree House is open for inspection

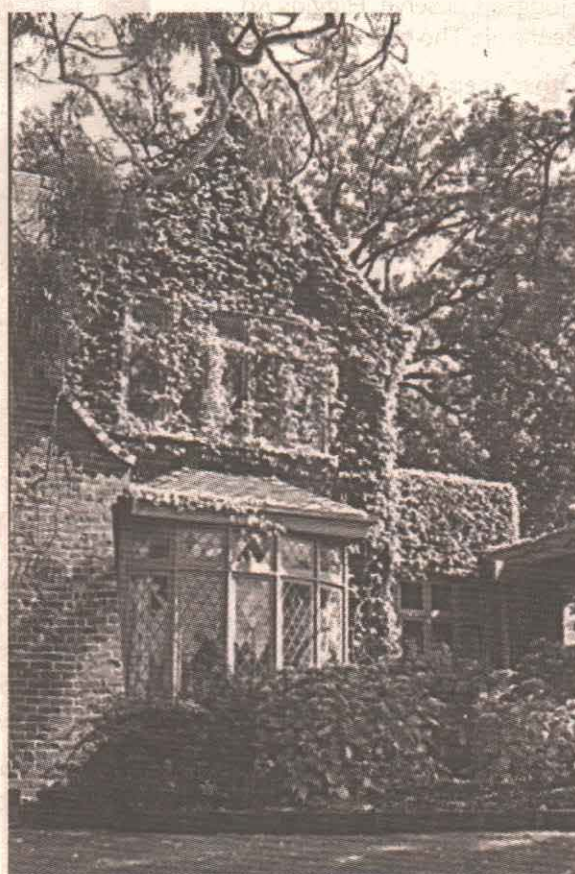
Oak Tree House is open and we are ready to welcome the arts community to this lovely and well-equipped space.

Adjacent to the Caulfield Library and the Glen Eira Arts Complex, Oak Tree House is superbly situated, and provides a range of facilities and rooms for arts-based associations and businesses.

Upstairs are four studio/tutoring spaces; downstairs a range of class/meeting rooms and the extended ceramics workshop area.

So, if you're searching for a place to meet, teach, work, show or play, for an afternoon, a week, or a year, on a regular basis, call us for more information.

If you would like to see the facilities of Oak Tree House and talk about its potential, come and inspect it at one of the following times: Sunday 10 May 12pm-1pm, Tuesday 12 May 3pm-4pm, or Tuesday 12 May 6pm-7pm. If you wish to inspect the facilities but cannot make one of these times please call the arts programmers for assistance on 9524 3402.



Community diary

COURSES

U3A Glen Eira has vacancies in the following classes: Let's Look at Art, French Literature, Short Story Writing, Italian Conversation, Bridge Beginners, and Air brush. Contact: 9572 0571.

MEETINGS AND CLUBS

Community Aid Abroad St Kilda/Glen Eira Group will meet at the Betty Day Centre Argyle Street St Kilda Monday 11 May at 7.30pm. Guest speaker from Living Ethically and Sustainably (LEAS). Contact: Cathy 9578 0613.

Caulfield Combined Probus Club meets the first Wednesday each month in the Ashley Ricketson Centre 262/294 Kooyong Road Caulfield at 10am. Vacancies – new members welcome. Contact: Ted Hills 9563 6595.

Caulfield Day VIEW Club (Voice Interests and Education of Women) offers opportunities to meet new friends and enjoy monthly outings, lunches and coffee mornings. Activities aid the Smith Family. New members welcome. Contact: Val 9578 1302.

Glen Eira Bicycle User Group meets once a month to socialise, liaise with Council on bicycle facility improvements and organise social rides. Contact: 9557 8591.

Caulfield Rotary Club presents *A Night to Remember*, compered by Rod McLennan and featuring Young Voices of Melbourne, Robin Collins and the Tivoli Dancers, cellist Robin Gray, violinist Dominique Gallery and others, at the Auditorium Glen Eira Town Hall cnr Glen Eira and Hawthorn Roads Caulfield, on Wednesday 6 May at 7.45pm.

City of Glen Eira Neighbourhood Support Program – for information about our Fathers' Group, Chinese Mothers' Group, Young Mothers' Group or Solo Mothers' Group, and drop in centre at Moorleigh village. Contact Judy White or Maureen Carolan at Caulfield Maternal and Child Health Service on 9524 3403 or 9524 3404.

CHURCHES

St Stephen's Uniting Church will present instrumental and vocal concert *Spirit of Youth* at the church 158 Balaclava Road North Caulfield on Sunday 31 May at 2pm. Donation: \$8, children free. Afternoon tea included. Contact: Ingrid Austin 9557 5979.

St Mary's Anglican Church answers "Everything you ever wanted to know about Christianity but were too afraid to ask" at its 12 week Alpha Course discussion nights beginning 10 June 7 – 9.45pm. Small charge for meal. Free no-obligation introductory dinner (bookings essential) on Wednesday 27 May. Contact: Vicar Barry Green 9532 8566.

ARTS AND ACTIVITIES

Historic "Box Cottage" Joyce Park Jasper Road McKinnon will be open Sunday 31 May, 2 – 4.30pm. Display by Murrumbidgee Spinning Group and pioneer memorabilia. Donation: 50 cents goes to Moorabbin Historical Society. Contact: 9578 7060.

Scouts and Guides present the *Melbourne Gang Show* live theatre entertainment written and performed by scouts and guides. National Theatre cnr Barkly and Carlisle Streets St Kilda, 3 – 13 June. Bookings: 9309 4647.

SERVICES

Moorabbin Area Toy Library at Moorleigh Community Village 90 – 92 Bignell Road East Bentleigh has items for babies to early primary and special needs. Membership available for families, caregivers, groups, foster care, etc. Contact: Marianne on 9570 6825 or the centre on 9570 3590.

Caulfield Community Toy Library off car park of Caulfield Swim Centre Moira Avenue Carnegie. Vacancies available now. Contact: Fiona 9572 5102.

Alcohol and Other Drugs Service provided by Heathlands Community Health Service. Free guided and supported withdrawal and counselling. Confidentiality assured. Outpatient or home visits. Contact: 9579 2333.

Southern Citizen Advocacy – your ability to handle every day matters would assist an adult with a disability to participate in community life. Short orientation program begins soon. Contact: 9576 0155.

Step out for your *fitness*

Step out and improve your fitness with Council's over 50's walking groups.

Walking with an organised group is a great way to improve your fitness in a fun and social atmosphere. With the assistance of your qualified instructor, the company of other participants and pleasant surroundings, motivation is easy. Each session is suitable for both men and women and includes warmup exercises, a comfortable but invigorating walk and cool down stretches.

Recent surveys and back care advertisements have shown that walking is a great help in reducing back pain.

East Bentleigh Walkers step out on Tuesdays at 9am from Centenary Park, Brady Rd entrance, East Bentleigh and Bentleigh Walkers start on Wednesdays at 9am from Hodgson Reserve, Higgins Rd Bentleigh. The cost per session is \$2.

Other keep fit opportunities for Over 50's include exercise to music classes, chair-based exercises, and table tennis. For further information on these programs and our walking groups please contact Cheryl Kennedy, Recreation Officer for Older Adults on 9524 3356.

Members of the East Bentleigh Walkers set off for a pleasant morning walk.



NEW OVER 50'S WALKING GROUP

Glen Eira City Council is planning a new walking group for residents 50 years and over in the Caulfield area. Commencing early spring, sessions will be led by a qualified instructor and will meet once a week for one hour in the morning. Day and location yet to be decided. The walk will include warmup exercises, a pleasant walk and cool down stretches.

Walking groups enhance your fitness level and offer the opportunity to meet new friends. If you are interested in having your name on the list to start in August/September 1998, please contact: **Recreation Officer for Older Adults, Cheryl Kennedy, 9524 3356.**

Music club entertains

There was music in the air – played on a Yamaha EL90 organ by young Geelong artist **Bradley Treloar** (pictured). Bradley's skill produced the sounds of a full symphony orchestra (complete with strings and flute), and a dance band with sax and trumpets to rival a live band.

Bradley was performing for the Southern Music Club at the Senior Citizens Centre, Bentleigh. The club meets each month for recitals and performances with local and international artists.

Southern Music Club brings together people with a love of all kinds of music and offers them a chance to learn more about their instrument or, if they do not own a keyboard, an opportunity to practise before making the purchase. The monthly performances by professional players gives members and visitors an experience of how these instruments can sound with an expert at their keys.

The club is open for new members and offers a warm and friendly place to escape the wintry evenings. **Contact: Will Rainer on 9544 6394.**



Volunteer drivers and jockeys needed

Glen Eira Meals on Wheels

Can you help?

- Weekly, fortnightly or monthly spots available.

We offer:

- Petrol voucher to drivers • Morning tea and coffee • Social contact with other volunteers • and more ... (come and find out!)

You will gain:

- Satisfaction – helping those in need • Gentle exercise – to keep you fit.
- An enjoyable occupation • Companionship – we will find you a compatible jockey if required.

CONTACT: Gai Woolhouse on 9563 6611.

City of
**GLEN
EIRA**

HELP! for our youth

Glen Eira, Kingston and Bayside Councils and local youth support agencies recently unveiled the state's first comprehensive directory of community agency services and programs for young people in secondary schools.

State Education Minister Phil Gude launched the *HELP!* Catalogue last month at Glen Eira town hall. The launch was attended by representatives from the Councils, Department of Education, youth services and agencies, local MPs, and Glen Eira Mayor Cr Barry Neve.

Local drama students acted out scenes dealing with issues facing young people, from drug use to suicide and the McKinnon Brass Band entertained guests.

The *HELP!* Catalogue is a joint initiative by youth services workers from the three Councils, Department of Education social workers and two local Community Health Centres – East Bentleigh and Heathlands (in Bayside).

Glen Eira Mayor Cr Barry Neve said: "This is an exciting pilot project, which has the scope to be duplicated across the State and provide a much needed resource for our young people and to help tackle youth suicide and homelessness."

HELP! stands for Health Education and Learning

Programs. The catalogue promotes prevention, early intervention, resilience building, health and well-being through the provision of education and learning programs and services.

Many of the agencies in the *HELP!* Catalogue can also support young people at risk through early detection, intervention, specialised youth counselling, case management and follow up.

The *HELP!* Catalogue will help bring the expertise of community agencies specialising in youth support services into schools, and is supported by school student welfare co-ordinators. Programs will be run in schools and personal links provided to agency workers.

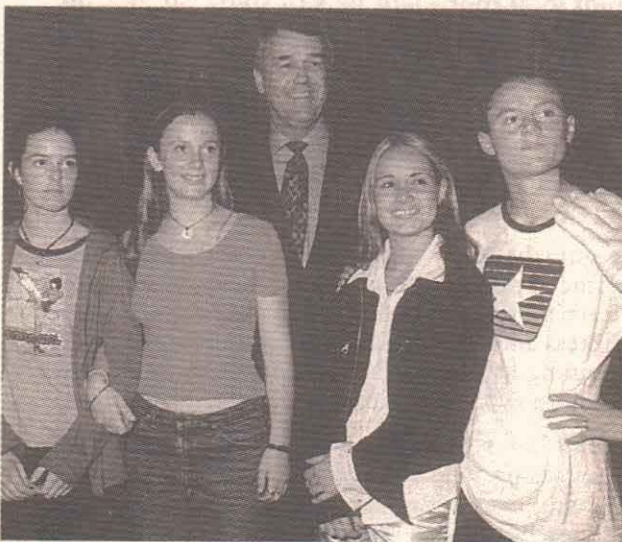
The local initiative follows recommendations for better integrated services for young people, in both the Youth Suicide Prevention Taskforce Report and the Prevention of Youth Homelessness Report.

The State Government Departments of Education and Human Services also emphasise the need for schools and community agencies to work in partnership to provide programs for young people which promote and develop resiliency, life skills and well being, as outlined in the report *Framework for Student Support Services in Victorian Government Schools*.

Developing the *HELP!* Catalogue took eight months of discussion, negotiation and hard work by

members of the Steering Committee, and was the first time that many of the agencies had worked collaboratively.

For more details on the project, contact youth services co-ordinators Jodie Belyea at Glen Eira City Council on 9524 3321 or Denise Duivenvoorden at East Bentleigh Community Health Centre on 9579 2333.



Education Minister Phil Gude with drama students at the *HELP!* Catalogue launch.

Phone in for drug awareness

In conjunction with the Victoria Police, Department of Education, and a number of community groups, Glen Eira City Council will conduct a phone-in to raise awareness of issues surrounding drug and alcohol use and dependency.

Operation Aware will provide a confidential alcohol and other drugs information and referral service by trained professionals, to assist, educate and resource young people and parents of young people who may suffer through drug use.

On Tuesday 19 and 26 May, residents are invited to anonymously phone the Service Centre from 7pm to 11.30pm for confidential, free advice on any issue relating to drug use. *Operation Aware* is not a police

information gathering exercise, but is an education and resourcing project. Over recent years a number of programs have directly and indirectly targeted young people, parents and the broader community on the issue of drug use and dependency. These programs have enjoyed varying degrees of success as was reflected in the findings of the Premier's Drug Advisory Council.

Following this research and the development and implementation of the Victorian State Government's Drug Reform strategy *Turning the Tide*, Caulfield Police Community Consultative Committee, of Glen Eira City Council, the Department of Education, local Rotary Groups, Heathlands Community Health Service and Task Force, have joined together, in a proactive community partnership, to implement *Operation Aware* – a local initiative to "help turn the tide on drugs".

A resource brochure will be available and Education and Information Sessions are proposed.

For further information contact: Sgt. Mal Thorp, Caulfield Police on 9528 6688 or Jodie Belyea, Youth Services, Glen Eira City Council on 9524 3321.

Quick Quiz Answer:

The property known as Killleam in Yawla Rd was purchased by a group of well-known local identities in 1949 for £5,500. The club was up and running on this site within a year of purchase. The club was set up for those who wished to meet in a social atmosphere without having to abide by the strict hotel law of 6pm closing.

TONER CARTRIDGE SAVINGS!

Save up to 50%

Businesses large and small can cut costs in their computing areas without spoiling the quality of their work. Save up to 50 per cent on Epson, H.P. Laserjet and Canon toner cartridges, photocopier and fax, bubble jet and ink jet cartridges. These are re-manufactured to as good as new by Advanced E.D.P. Supplies P/L.

Inessa Elberg, who established the company eight years ago, says that the re-manufacturing process used by her company caters to over 600 satisfied clients in Victoria and interstate. Customers such as Big W, K-Mart, major hotel chains and small businesses

save money while reducing waste.

"Our free pick up and delivery is an additional convenience," says Inessa. Recycling empty toner cartridges means you don't have to pay the full price again. Contact Advanced E.D.P. Supplies P/L on Phone 9563 6111 or fax 9563 6352.



Understanding young children's behaviour

City of
**GLEN
EIRA**

Would you like to know more about parenting young children...? Then come along to an informal talk by: Community Health Nurse/ Psychologist Jenny Burley – Caulfield Community Care Centre.

WHERE: Moorleigh Community Centre
92 Bignell Road, Bentleigh
Phone: 9570 3870 or 9570 6418.

WHEN: Tuesday 5 May, 1.30-3 pm
COST: \$3

Toddlers and food

You are invited to come along to this informal talk by: Dietitian, Sally Curtis – Caulfield Community Care Centre.

WHERE: Glen Huntly Maternal & Child Health Centre
Cnr. Royal & Rosedale Avenues, Glen Huntly
Phone: 9572 5123 or 9572 5126.

WHEN: Tuesday 19 May, 1.30-3 pm
COST: \$3

GLEN HUNTLY Friendship Group

99 Grange Rd, Glen Huntly Activities for May

Wed May 13: Bus trip Mornington Market – always interesting. Bring or buy own lunch. Afternoon tea provided at Linton's beautiful nursery at Mt Eliza. Gift shop with gifts galore. Departs 9am from 99 Grange Rd, Glen Huntly, and 9.15am from 185 Poath Rd, Hughesdale. Return 5.15pm. Cost \$20.

Thurs May 28: Comedy film, community singing, etc, 10am – 12noon. Morning tea \$2. Hall, 99 Grange Rd, Glen Huntly.

Bookings for bus trip:
please ring Margaret 9596 6124.

U3A Bus Tours

20 May 9.30am – 3.30pm

Visit Smorgy's, Geelong, with its delightful Polynesian atmosphere, situated on Cunningham Pier. See the famous painted bollards. For lunch, eat all you can from a mouth-watering smorgasbord. Spectacular special effects show.

17 June, 9.30am – 3pm

Crown Casino Special. Cost just \$6.

23 – 26 November

Special 4 days/ 3 nights. Great Ocean Road, Apollo Bay, Twelve Apostles, Warrnambool, Port Fairy, Nelson, Mt Gambier, Penola.

ENQUIRIES: 9572 0571 OR 9523 7862 (AH).

Lessons for life

Coach Manny isn't just teaching soccer – he's teaching life skills.

He says he's 78 but Manny Poulakakis' animated, smooth-skinned face makes him look more like he's pushing 60, not 80. With a lifetime in soccer as both player and coach, does he attribute his health and youthful outlook to the game?

"Maybe, but I also believe everything in moderation, and a healthy attitude – to life, to everything," he says.

Manny believes everything he teaches about the game applies to life as well. He said young players learn all the obvious things like team spirit, physical fitness and co-ordination, self discipline and good training habits. But he said they also learn lessons about how to deal with other situations in life.

"Children need to learn persistence. If they know if they keep trying at improving their game, they will actually play better, then they learn that applying themselves and working hard gets them somewhere. This is true in school, then later in their work and in every aspect of life."

"Children need to learn from their own mistakes and make their own decisions. I'm teaching them to be responsible for themselves," he said.

"If they make a mistake, or miss a goal, it means they'll try even harder next time. They learn to deal with the disappointment of missing a shot or losing a game, then they can deal with disappointments in life. When they are young, they need to be encouraged and inspired," Manny said.

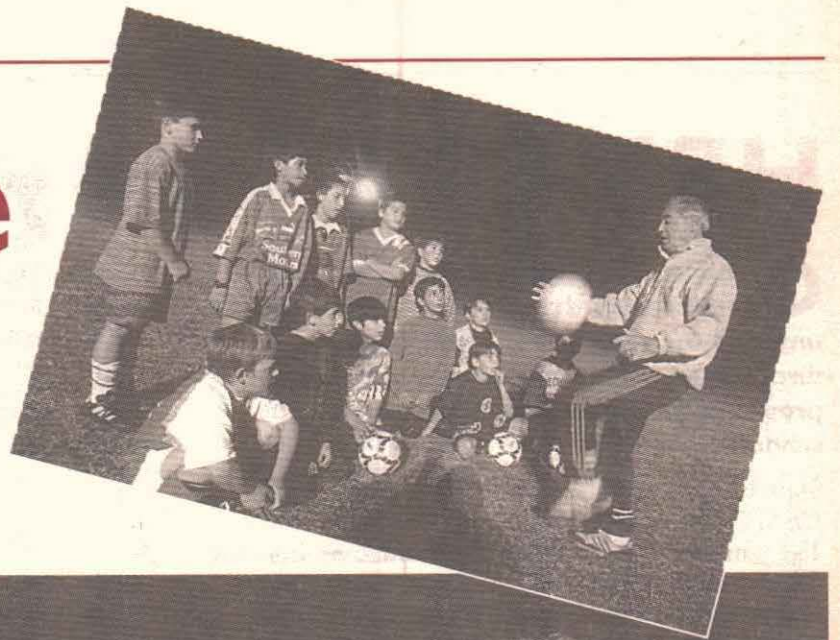
Manny played soccer in Egypt as a teenager, then later played with a French team. He has coached in the UK and, on coming to Australia has coached in both Sydney and Melbourne. Hailed as the "most successful coach in Australia", Manny won five championships in Egypt and has since added 10 championships to his achievement list in Australia.

He worked as a Physical Education teacher for a number of years – teaching secondary students the game and often training PE teachers in teaching the game as well.

Manny is Coaching Co-ordinator for the South Melbourne Juniors based at Princes Park. He trains sub-juniors (under 10) and works with teams in Under 11s to under 16s in the Covo Sports Super League competing in the Premier Victorian Soccer Federation competition.

Inset: Manny shows the Under 11 team the finer points of "juggling".

Below: Coach Manny Poulakakis gives Alex and Thomas some advice on game strategies.



Library News

Web-Wise Seniors

Seniors Card holders took advantage of the free Internet and Online Public Access Catalogue sessions at the Glen Eira Library and Information Service during Senior Citizen's Week. As one lady remarked: "Now when my grandchildren are talking about the Internet, I won't feel so much in the dark".

The morning tea and music sessions were also a great hit with staff and customers who tapped to the beat of Wacław Krol and his keyboard.

Library staff member Debbie Woodroffe gives some pointers to a happy new Internet user.



Did you take your heart for a walk today?

Regular physical activity helps keep your heart healthy.

Please support the



Heart Foundation

Send your tax deductible donation to GPO Box 9966 in your capital city.

Win our "Heartweek" competition Heart Week 1998: 3-11 May

Heart Week highlights the alarming fact that heart and blood vessel disease is the major public health problem facing Australians today. Heart attack, stroke and related disease cause the most deaths in Australia, claiming a life every 10 minutes.

More than 53,000 Australians died of heart and blood vessel (cardiovascular) disease in 1996, and far too many Australians remain at a higher risk through smoking, high blood pressure, high blood cholesterol, being overweight and not being regularly active.

Glen Eira City Council supports Heart Week and the Heart Foundation's life saving work by encouraging the Glen Eira community to take steps to have a healthier heart.

Win a fabulous prize of either a Heart Foundation approved cookbook (to the value of \$40) for adults or a kids' pack containing a T-shirt, pens and stickers from the QUIT campaign by filling out the form and posting it to:

*Health Promotion Team, Glen Eira City Council,
PO Box 42, Caulfield South 3162.*

Name one lifestyle change you can make to have a healthier heart:

Name: _____

Address: _____

Postcode: _____

Telephone Number: _____

Age (if under 18): _____

Entries close: 5pm Friday 15 May.

All entries will be entered into a barrel and the first correct adult and child entries will win the prizes. Mail entries to:
Health Promotion Team, Glen Eira City Council, PO Box 42, Caulfield South 3162.