

Glen Eira News

Glen Eira City Council, corner Hawthorn and Glen Eira Roads, South Caulfield 3162
Phone: 9524 3333 Fax: 9523 0339 Email: mail@gleneira.vic.gov.au

\$12.3 million for capital works

Glen Eira City Council will increase capital works spending by 27 per cent to \$12.3 million under its draft 1998/99 Budget, as part of the essential "catch up" works on community infrastructure and facilities.

Rates are proposed to rise by an average 6.5 per cent, which includes an Infrastructure Levy of 6 per cent to be used solely for the "catch up" works, and the balance to fund rising costs of recycling. This increase represents about a \$30 – 35 increase on the average rate bill, and has been approved by the State Government.

Despite the increase, Glen Eira rates will still be 15 per cent lower than in 1993/94 (after inflation) – see graph (right). Glen Eira's average rates and charges are also about \$80 lower than the average of our five neighbouring Councils.

Council is due to adopt the budget of \$57.4 million at its meeting on Monday 15 June.

The proposed rate is 5.1183 per cent of the Net Annual Value.

The Infrastructure Levy – to be implemented for three years – was first recommended by the Glen Eira Commissioners to the State Government in February 1997, following a study by Coopers and Lybrand.

The 1998/99 Levy will raise \$1.5m, which will be used only to "catch up" on the condition of community assets: footpaths, community facilities, drainage, and such. Council will allocate a further \$2.5 million for catch up works, bringing the total to \$4 million.

Recycling charge

The cost of recycling and other waste collection is increasing rapidly. Charges have been increased to cover these higher costs. The 1998/99 garbage charge is proposed to be \$78.50 for a 120 litre bin, and \$95 for a 240-litre bin.

The Glen Eira charge is still more than 10 per cent lower than the average of our five neighbouring Councils.

Council spends about \$1 million a year on collecting recyclable paper, glass bottles, plastic soft drink, milk and juice bottles, milk cartons, and steel and aluminium cans.

Waste collection costs seem likely to rise in future because of the higher costs of landfill, and, as the supply of recyclable material has increased, the market price has fallen.

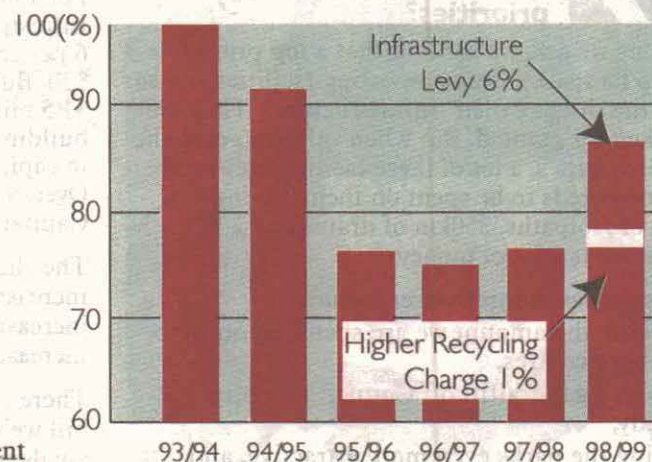
Capital projects

Capital projects for 1998-99 include the following:

- \$3 million on roads
- \$1.8 million on drainage
- \$1 million on footpaths
- \$870,000 to improve shopping centres
- \$500,000 on sports ovals
- \$400,000 on library materials
- \$200,000 on the two swimming pools
- \$210,000 for disability access to buildings
- \$200,000 on parks
- \$120,000 on playgrounds
- \$110,000 on improving traffic flows and safety

The "bottom line"

The bottom line for the 1998-99 Budget moves Council out of deficit. Glen Eira will be one of a handful of Victorian Councils to achieve that.



Rates and charges across the last five years (adjusted for inflation) showing Glen Eira's rates are still 15 per cent lower than the 1993/94 year.



Council spends money each year on improving pavements and kerbing in shopping centres.

Top: the old paving...

Above: replaced pavers and new kerbing...

Left: Council will spend \$1.8 million on drainage.

Below: \$3 million will be spent on Glen Eira's roads.



Inside this issue...

It's budget and rates time...

This month we present details of the coming budget

2-3

New item:

This month we also start what we hope will be a regular item – "Letters to the Editor"

4

News:

- Oak Tree House is ready for business
- Launch of the library's new multimedia service
- Phoenix Urban Precinct Project
- New Planning Policy

3
5
7
7

Features:

- The changing face of McKinnon
- Volunteer Recognition Awards

4
6

Regulars:

- From the Chamber (Council decisions)
- Arts
- Community Diary

2
8-9
10

From the Mayor Mayor's Column



A lot of work has gone into this year's budget. We have tried hard to match Council money to the community's priorities and to give top value for the ratepayer's dollar.

What are the community's priorities?

Every time we ask, we are told that a top priority is fixing up footpaths, drains, sporting facilities and so on – all the things called "infrastructure". They are often taken for granted. But when suburbs get to the age of Glen Eira's, a lot of these facilities get tired and money needs to be spent on them. Fixing 1000km of footpaths, 350km of drains and 200 buildings costs a lot of money.

Other priorities in this budget include:

- doubling the amount we are spending on strip shopping centres,
- money to get graffiti off Council property quickly,
- making the parks even more attractive, and several other initiatives which may not cost a great deal but can make a big difference to the people who live here.

How are we paying for this?

When the Commissioners cut rates a few years ago they were responding to a Government requirement and could not have known about three important things:

1. They did not know such a lot of money needed to be spent on infrastructure. (But when they realised it, they wrote to the State Government recommending an Infrastructure Levy of 6 per cent of rates should be introduced.)
2. They did not know the Government was going to keep rates below the level of inflation – meaning rates had less purchasing power each year.
3. They did not know Council would get a bill for about \$8 million to pay to the Superannuation

Fund – most of which was to pay for the cost of retrenching employees so rates could be cut in the new, larger City of Glen Eira.

If the Commissioners had known these things, I believe that they would not have cut rates as much as they did.

For 1998 – 99, we are implementing the Infrastructure Levy which means a rates increase of 6 per cent – for most people, that will mean about \$30. But when all of us put in this 6 per cent, we get \$1.5 million to help fix up our footpaths, drains, buildings and so on. Every cent of that Levy will go to capital works on our community infrastructure. Overall, we will be spending 30 per cent more on Capital works than in this financial year.

The charge for waste collection has also been increased. As we all know, the costs of recycling are increasing rapidly so the cost to ratepayers has to increase to cover it.

There is also a small increase to cover the rest of the bill we've been given for the superannuation costs of amalgamations. We don't like it but legally we have to pay it.

How much are rates increasing for day-to-day services?

Not a cent. We are continuously looking for ways of saving money and are absorbing the ordinary pressures on costs associated with such a large organisation.

Thanks

I would like to thank the Councillors for their input to this budget and the thinking behind it. Many evenings and some weekends have gone into this result.

I would also like to thank the Chief Executive and her staff who have done the work to achieve this result. The management team has worked hard over a long time to improve our finances to this position.

– Mayor Cr Barry Neve



From the Chamber

Superannuation pay out

Council has saved ratepayers \$2 million over the next 10 years, by deciding to pay out its superannuation liability to the Local Authorities Superannuation Board.

Independent professional advice stated that paying from reserves was the lowest cost approach, and endorsed management's original advice to Councillors.

Council voted 5–1 to use \$6 million from reserves and pay out the debt covering the former City of Caulfield, rather than pay \$8 million (in today's dollars) over 10 years. A division was called for on the vote.

The large increase in superannuation liability was caused by retrenchments, overwhelmingly arising from amalgamations of Councils several years ago.

The issue of liability for the area in the former City of Moorabbin is the subject of discussions with Kingston City Council, and will be handled separately.

East Caulfield Park redevelopment

Council will go ahead with the proposed \$500,000 East Caulfield Park redevelopment plans, which include synthetic tennis courts. An alteration to the plans will see the tennis courts moved slightly west, which will halve the car parking area.

Both Council and Monash University will put in \$250,000 each for the project. The redevelopment follows

two years of consultation between Council, Monash University and local residents.

Finance committee

A Finance Advisory Committee will be set up to tap into financial expertise in the community, to help Council deal with the many financial challenges it is facing.

Cr Veronika Martens will chair the committee, with several independent members chosen using a selection criteria which will relate to their financial expertise. Its terms of reference are:

- a. to make itself aware of strategic issues affecting Council finances,
- b. to debate and test the financial strategy put forward by management and give advice to the Council,
- c. to identify critical financial issues and refer them to management for analysis and recommendation,
- d. to provide further assurance to the community that Council's financial decisions are made on the basis of sound analysis and advice, and
- e. to inform and educate the broader community on financial issues affecting local government (a \$3 billion per annum industry in Victoria), eg ratepayers, professional associations, representations to government.

The Council's Audit Committee has strongly urged for

Councillor contacts

JASPER WARD



Cr Barry Neve

Ph: 9524 3225 (Council)
Fax: 9563 9403 (AH)
Mobile: 0412 218 468



Cr Russell Longmuir

Ph: 9557 4438
Fax: 9557 8717

ORRONG WARD



Cr Noel Erlich

Ph & Fax: 9533 0054 (H)
Mobile: 0412 218 485



Cr Alan Grossbard

Ph & Fax: 9533 0052 (H)

MACKIE WARD



Cr Norman Kennedy

Ph: 9564 8395
Fax: 9564 8402
Mobile: 04 1937 9540



Cr Veronika Martens

Ph/fax: 9579 7072 (H)
Ph only: 9579 0297 (H)
Mobile: 0419 218 474

Glen Eira City Council
PO Box 42 Caulfield South 3162
Phone: 9524 3333
Fax: 9523 0339

Email: mail@gleneira.vic.gov.au
Internet: <http://www.gleneira.vic.gov.au>

DEADLINE FOR THE NEWS

The next issue of *Glen Eira News* will be released on 6-8 July. The deadline is Monday 15 June.

Advertising rates are available on application.

To submit editorial material for consideration, fax 9523 0339, email on mail@gleneira.vic.gov.au or write to PO Box 42, Caulfield South 3162.

the establishment of a Finance Committee. Membership of the two committees will be kept separate.

Planning permit for Murrumbeena subdivision

A planning permit was approved for a new 97 lot subdivision on the former Murrumbeena Primary School site at the corner of Murrumbeena Road and North Road. The development will feature two new streets and a variety of dwelling sizes. A section at the rear has been set aside as open space.

Petrol station permit refused

Council has refused a permit for a petrol station, convenience shop and cafe at 347 North Road, not far from the corner of Bambra Road. The refusal was based on concerns of the effect on local residential amenity and non-conformance with Council's Retail Strategy. There were 42 objections.

The information in this publication is of a general nature. The articles contained herein are not intended to provide a complete discussion on each subject and/or issues canvassed, and every attempt has been made to ensure the accuracy of the material. The Glen Eira City Council does not accept any liability for any statements or any opinion, or for any errors or omissions contained herein.

Oak Tree House ready for business

Word is out and the new arts facilities at Oak Tree House are attracting a great deal of interest. The two houses which make up Oak Tree House (bought by Caulfield Council and connected by a hallway) adjoin the Glen Eira town hall. The building has been fully refurbished over the last few months to accommodate a wide creative arts usage, from pottery and painting studios to meeting and seminar rooms. Oak Tree House will become an arts-based facility for the Glen Eira community, for resident artists, classes, and workshops, as part of the service provided by the Glen Eira Arts team.

Built in the early 1900s the house is Edwardian style and features latticed glass work and bay windows. It takes its name from the old oak tree under which it resides.

The top floor of the house has been built to accommodate three art studios and all three spaces have already been leased. The ground floor has a wet area for courses in pottery, silk painting, and the like and has several meeting and seminar rooms.

Caulfield Writers Group is already making use of the space on a fortnightly basis. Minds @ Work will be running series of classes in 'The Ideas Business - exploring the creative process' and will soon be running writing classes there also.

The first workshop series in the wet area will commence in July. Brochures will be available later this month.

Local illustrator and artist Mitch Vane (pictured) is one of the lucky ones to secure a tenancy in one of the upstairs studios. She said she was looking

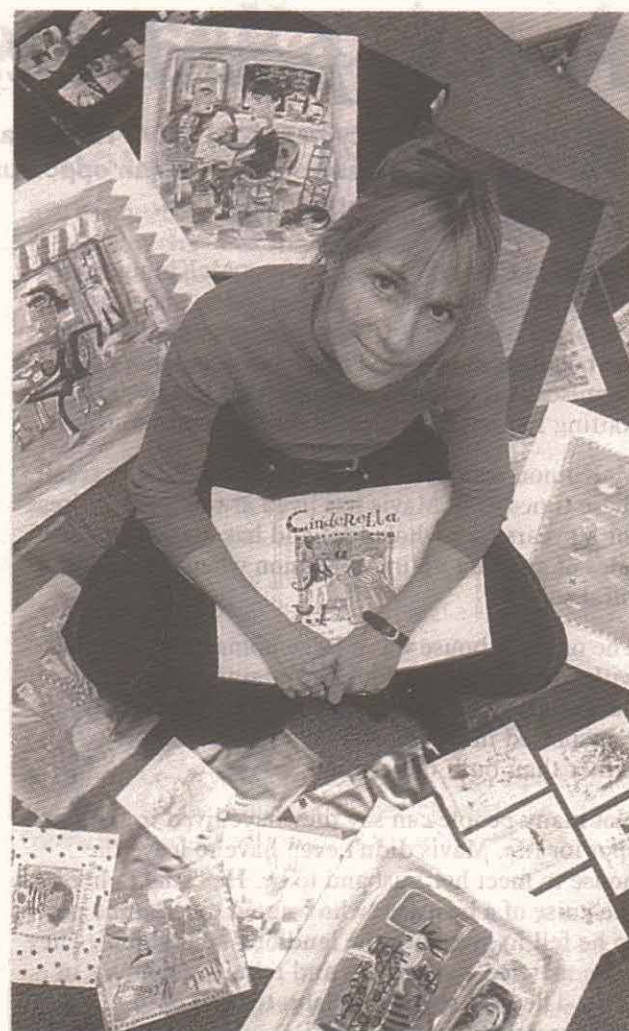
forward to setting up her easel in her new space and having the opportunity to do some of "her own" work.

Mitch has illustrated a number of children's books including Cinderella by Glenn Robbins. She has also completed some commissioned paintings and works in acrylic as well as pen and ink.

"Born and bred" in Elsternwick, Mitch has worked overseas and spent five years in a studio in London before returning to Caulfield three years ago. She trained at RMIT and is now teaching illustration as part of the design course.

The remaining upstairs studios have been rented by artist in pen and ink Polly Sproat and oils painter Georgina Kenyon.

Seminar rooms and the "wet area" are still available for rent on a regular or casual basis for classes. For further details or for a copy of the Oak Tree House brochure contact Deborah Vanderwerp or Susan Pilbeam on 9524 3402.



Local illustrator and artist Mitch Vane

Oak Tree House

So, why do we pay rates?

Every year at rate paying time, residents and business people alike bemoan the fact that they are required to pay Council rates. Many believe they do not use the services provided by local councils, so "why should they have to pay"?

But as Glen Eira Mayor Cr Barry Neve suggests, people often take for granted the essential services provided by local councils.

"As soon as you walk outside your door, you're taking advantage of local council services. The footpath you walk on and the roads you use are built and maintained by the City. Even the street lighting, that costs Council about \$900,000 per year, or the equivalent of about \$18 per household," he said.

Cr Neve explained that all local councils whose borders fall within an area serviced by the Metropolitan Fire Brigade pay a levy of \$850,000 per year - the equivalent of about \$16 per household in the City of Glen Eira for an essential service to be maintained.

"Not to mention parks and gardens, playgrounds, and library services - Council contributes \$1.7 million to library services in Glen Eira, representing access to 200,000 library books and material," Cr Neve said.

He also suggested many ratepayers take for granted the cleanliness and safety of food premises (Council audits 650 premises each year), Maternal and Child Health Services such as immunisation (a free service) and kindergartens, and sporting and recreation, pools, and arts facilities.

Council provides services for Local Law (at a cost of \$194,000 per year) and Parking and Traffic Control (at a cost of about \$720,000 per year), access to information through two Service Centres (at the

Town Hall and at the Bentleigh Library) and the monthly Glen Eira News and various other publications.

"What about the street sweeper and weed control? Together these services cost Council \$880,000 per year. And the annual budget for waste services, garbage collection, is \$4.7 million," Cr Neve said.

The garbage and recycling charge is proposed to be \$95 per residential property per year for a 240 litre bin. This charge covers the weekly collection of garbage, mixed recyclables (in the black crate), the monthly collection of recyclable paper, hard rubbish, bundled branches, tip fees, and administration.

"That's not bad for \$1.83 per week!" he said.

"Council also provides hard rubbish collection on call. Ratepayers can ring up at any time of the year and book a collection of hard rubbish," he said.

"And what about the Senior Citizen groups and activities, accommodation and meeting rooms for community groups and the like? All these things have to be paid for, it's as simple as that.

"The Glen Eira ratepayer pays an average of \$10 or \$12 per week - in real terms what can you get for that these days? And yet look at the range of services and facilities Council is able to offer. In many instances, ratepayers have unlimited use of these facilities. Nobody likes paying bills, but most people think nothing of using the service," Cr Neve said.

Glen Eira rates will increase this year by some 6 per cent as a result of the implementation of an "Infrastructure Levy" which will be spent on Capital Works. This increase represents about \$30 per ratepayer but will in effect raise \$1.5 million towards the repair and development of roads, drains, footpaths and buildings in the City.

The increase will help to cover the rising cost of recycling and rubbish collection and will also cover the Superannuation Fund bill councils have been given for the cost of superannuation as a result of council amalgamations.

Despite this increase in rates, Glen Eira rates remain 15 per cent lower (after inflation) than the rates in 1993-94, and are 13 per cent lower (on average about \$80) than the average of Glen Eira's surrounding councils.

Cr Neve said "taxes" on luxury items, alcohol, bank services and the like are "hidden" - absorbed into the overall cost of the item - while Council rates is one compulsory "tax" payment which people can't remain blissfully ignorant of.

"If somebody asked you how much you pay on council rates each year you would know the answer in an instant. But if that same person asked you how much 'tax' you pay just for being alive and making use of various services and facilities, you would not have the figures to hand and may not even know some of them," he said.

Community Grants 1998/1999

City of
GLEN
EIRA

Local Community organisations and groups are invited to apply for funds through Council's Community Grants Program.

An information package with application forms is available for collection from the Service Centre or by telephoning 9524 3333.

Closing date is 5pm on 30 June 1998 and it will not be possible to consider late applications.

From paddocks to suburbia

A lifetime residency has given Mavis Rusher a very special sense of the history of McKinnon. Robyn Szechtmann recently had an opportunity to talk to her and husband Athol about times past and present in McKinnon.

Imagine a time when waiting for a McKinnon train meant toasting your toes in front of an open fire in a warm room. When the trains were powered by coal, the boom gates operated by a man who lived on the premises and mud-caked shoes were left in the waiting room to be collected on the return journey.

McKinnon residents, Mavis and Athol Rusher recall these times well. Mavis has lived at the same address for 80 years (her whole life) and has many wonderful tales of growing up in McKinnon when it was still a rural suburb.

The original house was a large homestead complete with surrounding paddocks containing chooks, ducks, cows and a nanny goat. The house was transported in its entirety on a horse and lorry, rather than built on location.

Not many people can say they have lived in the same spot for life. Mavis didn't even have to leave the house to meet her husband to be. He came to her in the guise of a boarder "who wanted extra apple pie so he fell in love with the landlord's daughter". They were married a year later, and rebuilt the house in 1968. They are about to celebrate their 58th anniversary in June.

It's hard to reconcile the McKinnon of the young Mavis (nee) Moore's childhood with the suburb it is today. It was considered a rural suburb, "real Woop Woop, no-one knew where it was". There were paddocks as far as the eye could see, Chinese market gardens, dirt roads, and Elster Creek ran from Elwood through McKinnon. The creek was later diverted underground due to its tendency to flood.

The amenities and services we take so much for granted today, existed in very different forms back then. Mavis's neighbour provided the night lighting. Wielding a ladder on his bike, he went from lamp to lamp, igniting the gas streetlights. Sewage was collected once a week, and woe betide if you happened to be sitting on the lav' when he arrived, the draught sent shivers into places previously unexplored!

Only three shops existed in those days, a grocery shop, a general store and a haberdashery store run by the local midwife. Illnesses were treated by home-made remedies, such as cloves for toothache, because visiting the doctor meant a long trip to Caulfield where the only doctor and chemist in the area lived. Bread, rabbits and fish were all home delivered. Bottles were collected; beer bottles fetched the most money, which was unfortunate for Mavis's family, as they didn't drink.

Mavis' family have had a long association with the Salvation Army. The old homestead was the first site for Salvation Army meetings in the area, later serving as a Sunday school and Mavis has continued her family's connection. Athol was only accepted into the Moore household because they needed a coronet player for the Salvo band!

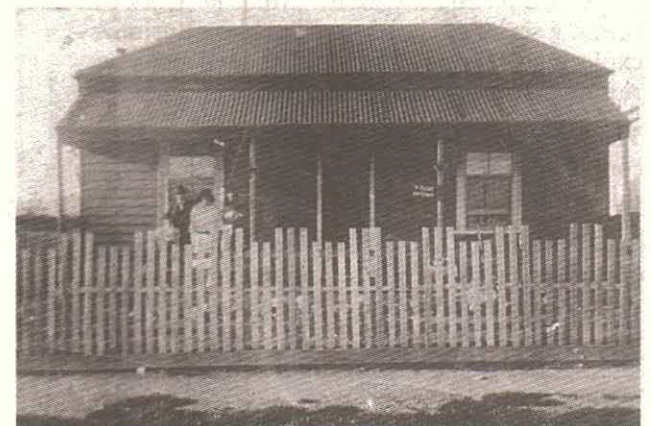
When the War broke out, Athol joined the Navy where he was assigned to Canberra to play the bugle in the company of the Duke of Gloucester and little Prince William. As the Rushers were recent newlyweds, Mavis continued to live with her mother and was recruited to work in the Xyolinite factory on the Nepean Highway to make cartridge cases.

Mavis recalls regularly taking supper down to the soldiers who were manning the searchlights operating from the Caulfield Racecourse. Watching the beams of light pass through the countryside was a "spooky" experience. Mavis recalls the war as a time of uncertainty, where rationing and blackouts prevailed but also a time where people came together as a community and shared with one another. "Never heard the word bored or depressed."

The end of the war saw a great shortage in housing and rural areas like McKinnon quickly became a part of the suburbs. The loss of lifestyle is still mourned by Mavis - she witnessed the end of steam trains, began to experience crowded carriages, and saw electric streetlights and shops popping up all over. Long gone are the days when she could leave the house unlocked and go for walks by the creek.



McKinnon residents Mavis and Athol Rusher with the photo of their wedding.



The original house in Lees St, McKinnon.

Athol and Mavis are still very active and vibrant. They both regularly visit people in nursing homes as far away as Blackburn and Athol still plays the trombone for the Salvation Army Veteran Band. He has recently received an OBE which impressed me greatly until I read the small print and realised the letters stood for Over Bloomin' Eighty! Must admit, I was still impressed.

Letters to the Editor

Barking dog costs owner

In response to a letter from a resident, the News offers the following information on Local Law regarding barking dogs.

A Glen Eira resident was prosecuted by Council at the Prahran Court on 30 July 1997 under the provisions of the Health Act, for having a nuisance (barking dog) on his premises.

The offender was found guilty and a conviction recorded. He was given a two-year Good Behaviour Bond and the Magistrate ordered that no dog be kept at the offender's premises for the duration of the Bond.

He was fined \$500 plus Court costs of approximately \$60. The defendant was also charged with failing to register a dog.

Keep those cats under control, please!

Further to letters received about pets...

A Glen Huntly resident writes of her concern about cats being outside and uncontrolled in early morning and evening, at bird feeding times:

"The result is many more distressing sights and cleanups for people like myself who encourage birds to feed and live in our gardens...I know it is hard for people who work but it is also very hard for birds and people like myself."

Local Law advises that at present Glen Eira does not have any local laws pertaining to cats. However under the provisions of the Domestic (Feral and Nuisance) Animals Act 1994 in Section 32, dogs and cats are not to create a nuisance. Council may be able to take some action if the person complaining about the cat knows who the owner is.

Also under the Act, Council may by resolution make an order in respect to confining cats on their properties, however this order mainly applies to Councils that may have wildlife and fauna within their municipality.

Non-smoking food outlets

We also received a letter to the editor which congratulated us on our recent Safe Food Guide, and requested a listing of which restaurants offer a smoke free environment.

Our Environmental Health officer advised that creating an accurate list of which premises offer this, from the information gathered during the

food audit was not as easy as it sounds. Points are taken off during the Hygiene Audit if there is evidence of staff smoking in the vicinity, but owners are not asked whether their premises are smoke free.

In addition to the Food Safety Audit, Council's Health Promotion Department runs a voluntary program called Taste for Health in which four and five star Food Safety winners are invited to undergo a second inspection relating to food health and taste. Those premises which opt to participate are inspected in regard to food preparation, health value of food (such as low fat and non-fried), taste and food choices (such as Skinny or Rev milk in coffees), and on whether or not they offer smoke-free sections or are totally smoke-free. Premises which meet the Taste for Health requirements are then given an award.

Readers are invited to send letters for publication in this new section: Letters to the Editor. Letters must be signed and include a name (please indicate if not for publication), contact phone number and address. The Glen Eira News reserves the right to edit letters. Please send your letters to: The editor, Glen Eira News, PO Box 42 CAULFIELD SOUTH 3162 or email to: editor@gleneira.vic.gov.au

Library grant starts CD-ROM loan collection

Extra State Government funding for Glen Eira's libraries was presented last month by Oakleigh MLA Denise McGill.

Mrs McGill presented Mayor Cr Barry Neve with a total of \$35,000 to boost Glen Eira Library and Information Services' collections.

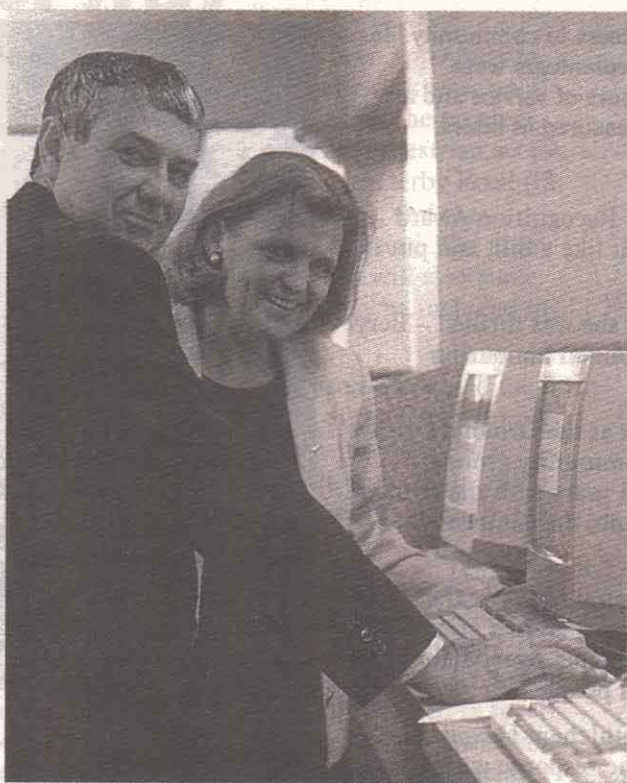
The amount included an Office of Local Government allocation of \$25,000 for special projects, which will be used to establish a special CD-ROM collection available for loan at Bentleigh and Caulfield libraries.

Also, a one-off grant of \$10,000 for buying additional materials has been offered by the Minister for Planning and Local Government Rob Maclellan. The funds will be used to start the Glen Eira Library and Information Service's upgrade of the Russian language collections.

Library and Information Service manager Sue Webster said: "The Library Service is extremely pleased to have successfully negotiated the \$25,000 allocation, considering the limited pool of funds available for distribution to Victorian libraries and the highly competitive bids from other library services. The extra \$10,000 is a great help."

Glen Eira has already been given core funding arrangements of \$494,000, bringing the overall annual contribution to \$518,732 to the year 2000 from the State Government.

The State Government has introduced Triennial Funding and Service Agreements for public libraries and negotiated local priorities funding – a new approach which has brought greater stability to the



Mayor Cr Barry Neve (left) and Oakleigh MLA Denise McGill explore the library's electronic catalogue system.

funding process and allowed for local projects to be targeted.

This support augments Council's commitment to its library and information services, with \$400,000 earmarked in the draft 1998/99 Budget for new materials.

Footpaths under repair

Recognizing that the condition of the city's footpaths is of major concern to residents, Glen Eira Council is undertaking an extensive program of repair and maintenance. All footpaths in the city were surveyed and over 15,000 sites requiring repair were identified.

The City of Glen Eira has a total of 911 km of footpath; fortunately, not all of it needs replacing or repairing. Since the program started in 1996, 27 km of footpath have been replaced and 29 km have been "ground".

In addition to the usual annual allocation of \$560,000 Council provided \$450,000 last year and a further \$640,000 this year. Subject to other demands for funds this level of expenditure is expected to continue for the next two to three years. The majority of these funds have been spent in the area south of North Road.

As Council's own workforce doesn't have the capacity to complete all of the work that has been funded, contractors have been employed to carry out the program in parts of the city.

The program employs two methods of repair. One is to grind down minor irregularities, ie where a slab is raised up to about 25 mm (1 inch). The other is to remove and replace slabs that are raised more than 25 mm or are sunken or broken.

The grinding contractor works through an allotted area grinding what can be ground and reporting back to Council any slabs needing replacement. These are then replaced by either Council staff or another contractor. This is the most cost-effective way of repairing footpaths.

Libraries online to new technology

Mayor Cr Barry Neve officially launched Glen Eira City Council's Multimedia and Information Services last month, acknowledging that the community was "rapt" in the technology services available in the City's network of libraries.

Library and Information Services Manager Sue Webster said: "We're celebrating how far we've come as a library service, and the work on our community's knowledge infrastructure – in both access to and understanding of the increasing network of information and knowledge services."

Service improvements include: being the first public library in Australia to have its catalogue on the World Wide Web; a single computer system for Glen Eira's five libraries – the latest Sanderson UriCA equipment with user-friendly presentation; Internet training; free public Internet access; and business support services ranging from statistics to online research.

Library Information and Technology Services Librarian Sue Woodman said community interest in the Internet at the libraries was "booming".

"The public response has been enormous. There were 1750 bookings for Internet time during April and some people come every day. There are also international visitors who come in to read their email," she said.

Cr Barry Neve said Glen Eira City Council's library and information service was at the "leading edge" of new technology in libraries.

"Residents are rapt by the new services and technology available to them in the libraries, and I want to encourage as many people as possible to use them."

The launch was attended by representatives of the Glen Eira business community, State Library of Victoria, Councillors, Council senior staff, Monash University and local secondary colleges, and other local organisations.



(From left) Information and Technology Services Officer Sue Woodman and Library Co-ordinator Sue Webster with Mayor Cr Barry Neve launch the library's Multimedia and Information Services.

The expanded services include:

Public Internet Access – 13 PCs offering FREE access to word processing and spreadsheet software packages, informational CD-ROMs and the World Wide Web.

Computer Training Facility – a fully equipped multi-station training centre at Caulfield Library, including six state-of-the-art PCs acquired with the assistance of the State Government's Community Support Fund.

Internet classes – conducted by library staff accredited as trainers.

Leading Edge Library Management System – which manages the day-to-day functions of the library and gives access to the library's extensive collections available at five branches.

Glen Eira Business Information Service – as one of eight selected libraries in Victoria, Glen Eira Library and Information Service will offer local business access to trained professional staff and specialist collections.

Resource Guide 1998

The 1998 Resource Guide has just been delivered to Glen Eira's 56,000 homes and businesses. Featuring two children at the annual Carols by Candlelight held at Caulfield Racecourse on the cover, the 100-page booklet is a valuable guide to the City, including Council services, community groups, and Glen Eira information, from parks to playgroups to politicians.

Feature photos inside include Belinda Petersen and daughters of Murrumbeena (regular users of the Murrumbeena creche), and Mavis and Athol Rusher of McKinnon – their story appears in this edition of the Glen Eira News.

A new section this year is a map of Federal and State electorates which cover the City of Glen Eira.

Volunteers Recognition for our volunteers

Glen Eira City Council recognises the contribution of volunteers to community life in Glen Eira during Volunteers Week in May. This year 169 volunteers were nominated across four categories: 500, 1,000 and 2,000 hours of service and a Special Category covering nominations which cannot be measured in hours.

By Robyn Szechtman

Beryl Craig nearly missed out on receiving her Volunteer Recognition Award from Council. When it arrived, she thought it looked a bit like a bill, and put it to one side.

When she finally bit the bullet and opened the envelope, she was thrilled – Beryl was being invited to a ceremony held each year by the Council honouring volunteers' contribution to the community.

Beryl received an award for 2000 hours of volunteer work at the Ormond Cricket Club. She has a lifetime of involvement with different community groups, including 39 years with the Ormond Cricket Club and 15 years with the Ormond Football Club. When she first started with the football club, the canteen was a pitched tent and the hotdogs were cooked in a copper.

Beryl was also a volunteer with the Mercy Maternity hospital for 14 years, working with isolated young mothers and their babies, and sang in a group called the *Heather Singers*, touring hospitals and nursing homes over Melbourne and providing much needed entertainment to bed-ridden people.

"It was very rewarding when we were singing down at Bethlehem Hospital, especially to the younger ones with multiple sclerosis. The response we got was very rewarding. The doctors would say, 'never seen them laugh before'," Beryl said.

Beryl started to volunteer when her son played for Ormond Football Club and the Cricket Club and stayed there long enough to watch her grandsons playing. "Many of the boys at the football club know me more than I know them, they were 16 or 17 when I started there and now they are grown men!"

Volunteering at Ormond Cricket Club has always been a family affair. Beryl's daughter also helps with the canteen and her husband scored for them for 20 years. The rewards of volunteering at the Cricket Club are many. "I enjoy the work I do. It takes a lot of money to keep these clubs going and it keeps the younger boys off the streets and gives them something to do."

Ken and Betty Hughes have also been volunteering with the community for many years and were nominated for a special award for their 25 years of service with the Life Activities Club Bentleigh and 22 years with the former Meals on Wheels program.

Volunteers – supporting our community

By John Wickham

Social Support and Monitoring Co-ordinator

Throughout the City of Glen Eira, volunteers' contribution to the heart-beat of the community is widely recognised. Over the years many people have contributed through Service Clubs, Schools, Churches, Meals-on-Wheels and Neighbourhood Houses. Their efforts are acknowledged each year during Volunteers Week, May 11 to 18.

From the Glen Eira Community Information and Resource Centre, which in itself is operated by volunteers, a volunteer program unique to this area is entering its sixteenth year – the Social Support and Monitoring Service which is financed through the Home and Community Care program (HACC).

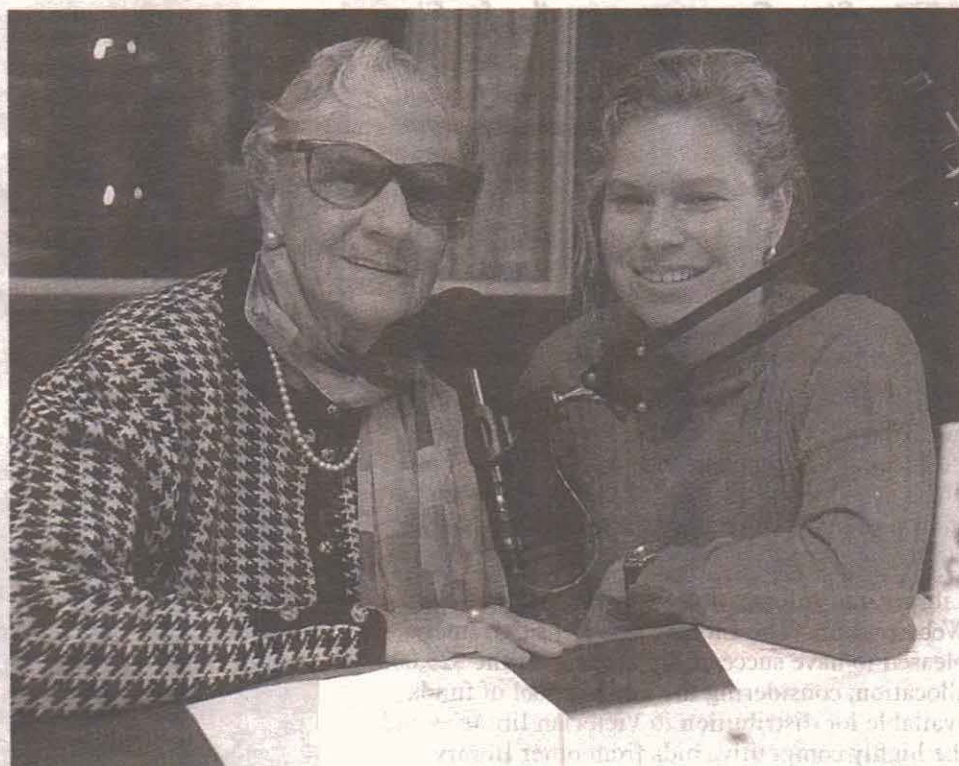
Participants in the program volunteer to visit a frail, elderly or disabled person on a regular basis to help them maintain independence in their own home. The volunteer is often complementary to professional support, such as a visiting nurse or home-help.

A volunteer who visits weekly or fortnightly for a social chat can make a real difference to what otherwise may be a lonely or isolated lifestyle. For some elderly or disabled persons the need may be for more practical assistance such as a shopping companion or someone to drive them to a medical appointment.

A volunteer with the Social Support and Monitoring Service for the last seven years, Phyllis McLean speaks of the need for such a service. She takes two ladies shopping, each on alternate weeks.

"I know that I can make life a little easier for these ladies, even though my contributions are small in time and effort. I receive a lot back in terms of satisfaction and friendship from the two ladies I assist. I would recommend this program to anyone who is thinking of doing some community work, even a couple of hours per week," she said.

The Social Support and Monitoring Service is organised from the Glen Eira Community Information and Resource Centre at 256 Hawthorn Rd Caulfield. Prospective volunteers should contact the program co-ordinator, John Wickham on 9524 3314.



Volunteer Recognition Award winner Beryl Craig (left) with Robyn Szechtman on the Glen Eira Radio Hour at Southern FM.

Betty, nearly 84, loves volunteering: "I enjoy the social involvement you get with other people, it gets you out and stops you growing too old!"

"It wasn't what we expected. My husband has been involved too, which is a very fortunate thing when you are both interested in the same thing," Betty said.

The Maternal & Child Health Service presents:

Heading towards a good night's sleep with children 12 months and under

Expert staff from The Queen Elizabeth Centre will present strategies to help your infant learn to sleep through the night.

DATE: WEDNESDAY 17 JUNE, 1998

TIME: 7.30 PM – 9.30 PM

COST: \$8 PER PERSON

VENUE: Glen Huntly Maternal & Child Health Centre, cnr. Royal & Rosedale Avenues, Glen Huntly

Tickets may be purchased in person, from any Glen Eira Maternal and Child Health Centre.

Contact: 9524 3403 ENTRY BY TICKET ONLY



Ticket giveaway

The Classic Cinema in Elsternwick this month is screening *Mrs Dalloway*, based on the novel by Virginia Woolf and starring Vanessa Redgrave.

The film is a gentle study of how a woman, on the day of a society party which she is hosting, reflects on the romance she left behind – over 24 hours we learn about the pain and dignity of the choices she made. *Mrs Dalloway* is directed by Marleen Gorris, director of the Academy Award winning *Antonia's Line*.

The Classic Cinema is offering free double passes to *Mrs Dalloway*, to the first 15 callers between 1pm and 1.10pm on Friday 12 June.

The tickets can be used for any session, except Saturday nights.

Classic Cinema, 9 Gordon Street, Elsternwick 3185. Phone: 9523 9739.



Phoenix Precinct Urban Design Framework underway

Phoenix Precinct

Council, in conjunction with Monash University and the Victoria Amateur Turf Club (VATC), have received a grant of \$35,000 through the State Government's *Pride of Place Program* to develop an Urban Design Framework for the area surrounding the Caulfield Station - also known as the Phoenix Precinct.

The Phoenix Precinct is named after a row of Canary Island palms (*Phoenix Canariensis*), along Sir John Monash Drive. The trees represent the remnants of a public garden which once occupied the area. The Phoenix Precinct encompasses the area around the Caulfield Racecourse, Monash University Caulfield Campus, Derby Road shopping centre and Caulfield Plaza, East Caulfield Reserve and residential areas in the vicinity.

Mayor Cr Barry Neve said Council, Monash University and the VATC have demonstrated a willingness to co-operate together and made a joint submission for funding in late 1997. He said each of the three applicants were to contribute \$10,000, making a total of \$65,000 to fund the development of the framework.

Gerner Consulting Group has been appointed to prepare the Urban Design Framework which will examine a number of issues around the precinct including traffic and carparking, pedestrian access, public transport, street scaping in Derby Road (in keeping with Heritage Guidelines), and the development of buildings and housing. The study will explore existing facilities but will also make recommendations about what may be included in the future.

Council's Strategic Planner Jason Close said the area represented a significant part of the City not only because of the facilities such as the university, racecourse, railway station and shopping centre, but also because of the sheer number of people in the area at any given time.

Caulfield station is a major interchange for two of Melbourne's busiest railway lines (Dandenong and Frankston) and for V-Line's Gippsland trains. He said the railway played a crucial role for facility patrons but the area was actually divided in two by the railway lines, creating some unique difficulties for students, residents, shoppers and racegoers.

The Urban Design Framework is the second phase of the research into the development of the area.

The initial stage was the production of the Phoenix Precinct Strategy report which explored ways to optimise land use, and develop an overall plan for the area. The report, compiled by Greenaway and Katz, made recommendations regarding future uses for VATC carparking sites, examined the possibility of entertainment facilities, options for high density housing, and student accommodation. The report also flagged the need for an urban design framework for the area.

Mr Close said Council had been meeting with the VATC and representatives of Monash University over the last several years to discuss strategies for joint initiatives and to realise common goals for the facilities and the area. An example of co-ordinated planning of the precinct was the manner in which the VATC have developed the provision of carparking and rooms for examinations for university students.

The Urban Design Framework will be prepared over the coming months and will offer medium and longer term plans and recommendations. The process will include community involvement and residents and traders will be given opportunities to contribute.

Council approves new planning policy

Council's adoption of the Non-Residential Uses in Residential Zones Policy gives residents and developers some certainty regarding preferred locations of non-residential uses such as medical centres, childcare centres, nursing homes or veterinary centres.

Many non-residential or commercial-type uses are permitted in residential areas, but badly sited or controlled non-residential uses can progressively erode the amenity of Glen Eira's basically residential nature.

The Policy addresses important issues such as siting and design, traffic and car parking, landscaping, hours of operation, noise and lighting. Non-residential uses will be encouraged to locate on main

or secondary roads where the impact on neighbouring properties are considered to be lower than such uses in minor streets.

This policy, together with the Monash Medical Centre Precinct Structure Plan are proposed to be incorporated into the new Glen Eira Planning Scheme later this year.

New format planning schemes allow a much broader range of discretionary uses within residential zones, thus Councils need to incorporate local policies into their schemes to guide decision making.

Copies of the both the Non Residential Uses in Residential Zones Policy and the Monash Medical Centre Precinct Structure Plan are available for inspection or purchase at the Town Planning Counter, Glen Eira City Council Offices.



Pharmacist Giovan Gandolfo (right) was among the pharmacists who participated in National Pharmacy Week (May 17-22) to highlight the role of pharmacists in providing information.

Travel Scholarship to Japan - September 1998



The Glen Eira - Ogaki Friendly Cities Advisory Committee invites Year 8 to 11 students who either live in or attend a school in the City of Glen Eira to participate in a Student Exchange to Ogaki, Japan for the above month.

The visit will be partially funded by a scholarship.

Applications close on Friday, 10 July 1998.

For more details contact Susan Pilbeam at Glen Eira City Council on 9524 3402

WHY? STOP Youth Information Centre

Why? Stop Youth Information Centre is open Monday to Friday, 2-6pm. It offers a fantastic range of information on services available to assist and support young people between the ages of 12 and 25 and their families. Information on heaps of youth matters is available, such as housing, training, recreation and leisure activities, health, and lots more!!! No appointment is needed - Just ring or drop in to the centre.

Youth Workers Jody and Isabel are available each afternoon. 54 Rosstown Road, Carnegie (close to Carnegie station) Ph: 9572 5389.

Funtastic School Holiday Program



Monday 26 June to Friday 10 July 1998
Don't be bored sitting at home these school holidays...

Come along to one of Glen Eira's Funtastic holiday programs!

Take part in great activities such as sports clinics, craft, cooking, trampolining or go on one of our great excursions.

Bookings are essential and can be made at the GLEN EIRA SERVICE CENTRE at the GLEN EIRA TOWN HALL on the following dates:

| | |
|-------------------|----------------|
| Monday June 15 | 6pm-8pm |
| Tuesday June 16 | 8.30am-5.30pm |
| Wednesday June 17 | 8.30 am-5.30pm |
| Thursday June 18 | 8.30am-5.30pm |

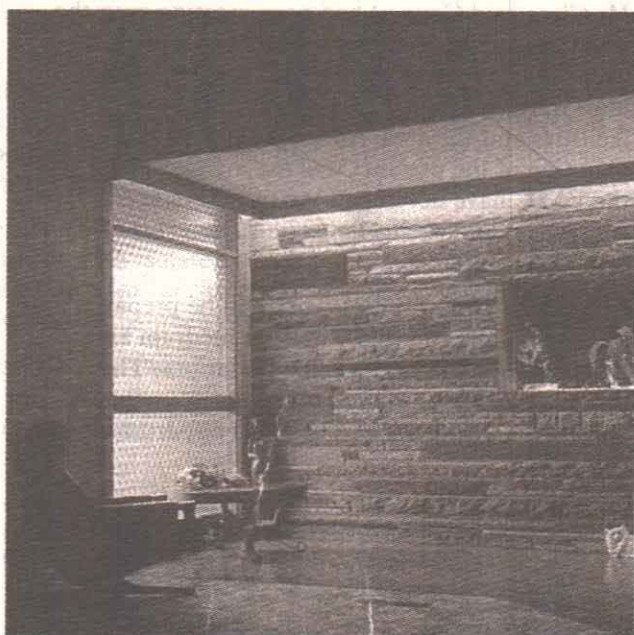
FOR A DETAILED BROCHURE OR MORE INFORMATION PLEASE PHONE 9524 3277

Arts

ARTS

EXHIBITIONS

How we are seen Everyday



Pictured above is a lounge room in Caulfield as seen by photographer Jane Burton. This photograph and other works that look at aspects of everyday life in Glen Eira are featured in **Everyday**. The exhibition was launched by architect and ex-footballer **Justin Madden** on Thursday 4 June 1998 and continues to Sunday, 28 June.

Unity & Diversity

The universal and the particular rub shoulders in the work of Auckland artist Don Copeland. *Unity and Diversity*, is Copeland's exhibition at the Glen Eira City Gallery and demonstrates his sense of Jewishness and antipodean roots, and explores an understanding of the universality of human experience.

Several of the paintings, with titles such as *Conversations* or *Lateral Thinking/Multilateral Argument* celebrate the Jewish love of robust debate as well as generalised concepts of communication and discussion.

There is a similar linkage between the general and the culturally specific in *Man at the bottom of the Ruck*, in which Copeland captures a painful moment from many a trans-Tasman game of rugby, and transforms it into a wry commentary on the human condition.

Unity and Diversity, recent works by Don Copeland, will be on show from **Tuesday 9 June to Sunday 21 June 1998**.

(right) *SO*, by Don Copeland. Acrylic on acid free paper

Timbuctoo to Tasmania

After a highly successful exhibition in 1997, Sidewalk Gallery from Hobart return with West African artefacts, tribal jewellery, textiles and contemporary work from Tasmanian artists.

This year's collection, the largest in Australia, will focus on antique tribal jewellery, including an exceptional collection of Yemeni Jewish silver and Bedouin pieces collected in 1997, and Hill Tribe silver from Thailand and Burma collected during the 1950s and 1960s. The exhibition also features a variety of pieces from many other countries, ranging from antique Turkman silver to trade beads from Africa and even a selection of Tuareg pieces from Timbuctoo as pictured below.

Contemporary Tasmanian artists will also be featured in the exhibition including the beautiful works of Launceston-based painter Jeff Burgess.

Opens 6pm, Tuesday 30 June and continues to Sunday 12 July.



EVERYDAY BUS TOURS

The Everyday Bus Tours will be casual, fun and informative and will feature a specialist guide. Each of the nine tours will run only once and numbers are limited to 10 per bus trip.

Each bus tour will begin and end at the Glen Eira City Gallery (corner Hawthorn and Glen Eira Roads) and includes morning/afternoon tea on return, and a tour of the Everyday exhibition. Costs are fully inclusive.

Tour 1 Jewish Culture
Tuesday 9 June – 10.15am-1.15pm **\$15**

This tour begins with a general introduction to Jewish culture with a guided tour of the award winning Jewish Museum, including its permanent and temporary exhibitions. A guided tour of the St Kilda Synagogue will follow. A wonderful opportunity to learn more about this important part of Glen Eira's culture.

Sites: The Jewish Museum, St Kilda Synagogue

Tour 2 Jon Campbell - Oak Tree House
Tuesday 9 June – 2pm-3.30pm **\$15**

Creatours introduce you to professional artists and crafts people and the spaces in which they create. You will see both finished art and art in progress.

Jon Campbell, one of the commissioned artists for the Everyday exhibition, will present a floor talk. His work is represented in both private and public collections throughout Australia. Oak Tree House is adjacent to the Arts Complex, and provides studio space for illustrator Mitch Vane, and painters Polly Sproat and Georgina Kenyon. **Run by Creatours.**

Sites: Glen Eira City Gallery, Oak Tree House
* See also Tours 3 and 5.

Tour 3 Victor Majzner's Studio
Wednesday 10 June – 10am-12pm **\$25**

Victor Majzner, Head of Painting at the VCA, will talk about his painting tour of Israel and his recent exhibitions in Adelaide and the Jewish Museum. **Run by Creatours.**

* See also Tours 2 and 5

Tour 4 A City of Many Cultures
Friday 12 June – 10am-12pm **\$15**

Explore multicultural Glen Eira by visiting areas and sites of cultural significance. A fascinating insight into the way we live, eat, learn.

Guide: Ellina Lewis is a professional tour guide, local resident, writer and teacher. She has a Master of Arts and speaks fluent Russian.

Sites include: Victorian Racing Museum, Glen Huntly Road, Elsternwick, Glen Eira Road.

*Tour to be run once in English and once in Russian (see Tour 8).

Tour 5 Benjamin Design - Jane Burton
Thursday 18 June – 1pm-3pm **\$25**

Creatours takes you to the studio of Benjamin Design to talk to Artist in Wood - Ben Carson, about his 'one off' designs and current commissions for furniture. Jane Burton, one of the commissioned artists for the Everyday exhibition, will present a floor talk. She has recently moved to Melbourne having successfully exhibited her photography interstate and studying in Paris.

* See Tours 2 and 3

Tour 6 Suburban Treasures
Monday 22 June – 10am-12pm **\$10**

Visual Arts Co-ordinator, David O'Halloran, will conduct a tour of highlights of the City's extensive quality art collection, including the 'paper boy' sculpture in Caulfield Park, sculptures by Guy Boyd and Peter Cole, plus works by Leonard French and Fred Williams. A floor talk by David, the curator of the Everyday exhibition will follow.

Sites include: Caulfield Park, City Hall, Harleston Park, Hopetoun Gardens

Tour 7 Cottage to Mansion
Tuesday 23 June – 10am-12pm **\$15**

A visit to three historic properties illustrates the development of the house and garden in the 19th Century. The National Trust and the local Historical Societies will each present a mini tour, with a specialist guide.

Sites include: Box Cottage, Labassa, Rippon Lea Garden.

Tour 8 The Impact of White Settlement
Wednesday 24 June – 10am-12pm **\$10**

Discover the effects of pre-Federation white settlement on the physical environment and its impact on the Wurrundjeri people. Explore indigenous flora and fauna, aboriginal sites, the effect of railways, drains and farming, discover the outer circle linear parks.

Guide: Moyna Wilson, teacher and local resident, has a special interest in local parks and history.

Sites include: Boyd Park, Murrumbidgee, reclaimed Swamps, old railway lines.

Tour 9 A City of Many Cultures
Friday 26 June – 10am-12pm **\$15**

In Russian See Tour 4 for details

Further enquiries and bookings: telephone 9524 3402

Everyday Expressions is an exhibition of visual art and writing by young Glen Eiran's, (primary and secondary students) on everyday life in their city. Entries will be displayed in the Arts Lounge, Glen Eira Arts Complex, and throughout the Glen Eira Libraries, and on Council's web site.

Mini exhibitions in display cases in City Hall will enhance the Everyday theme and will be displayed around the Town Hall offices. The mini-exhibitions will feature:

- *The Glen Eira Heritage Study and Management Plan* identify your house, style and history
- *'Kooyong Memorial Park - 10 years in the making'* a personal view by a resident. Also historical and planning perspectives on park development in urban areas.
- *Historical society display, gems from the collection.*
- *The Fooks' house, a 60s sensation, fabulous photos and articles from glossy magazines of the time.*

DARREN GREEN is "KAMELEON" – a travelling performance at major shopping centres in Glen Eira (19 June, 4-6pm, Koornang Rd shopping centre and travelling by train to Elsternwick, 20 June, 10am-12pm, Caulfield station to Glen Huntly). The Kameleon appears and travels the Glen Eira community as a living statue. Through performance he observes and analyses the environment of Glen Eira and its people.

Arts Calendar for June

Exhibitions

Hours: 10am to 5pm daily, 1pm to 5pm weekends and public holidays. Free admission.

4 to 28 June

Everyday, a study of life in Glen Eira. Featuring works by Jane Burton, Lyndal Walker, Jon Campbell and Destiny Deacon.

9 to 21 June

Unity & Diversity exhibition of recent work by New Zealand artist, Don Copeland.

30 June to 12 July

Timbuctoo to Tasmania Sidewalk Gallery return with West African artefacts, tribal jewellery, textiles and contemporary Tasmanian Artists.

Concerts

Auditorium

Sunday 14 June

To Melt the Ear and Charm the Eye at 2.15pm. Baroque concert featuring works by Johann Sebastian Bach, Jean-Philippe and Francois Couperin. Baroque dances, the Rigadon, Minuet, Bouree and Sarabande are performed by members from the Rippon Lea Renaissance Dancers to music played by Peter Hagen harpsichord, Rosemary Webber violin, and Rodney Waterman recorder. Tickets \$12 adult \$8 concession Bookings 9699 8417.

Friday 19 June

First Time Ever Classical Concert at 7.30pm. The Society of Polish Culture in Victoria presents an evening of favourite arias and songs by composers Moniuszko, Chopin, Niewiadomski and Zelenski. The programme will also include music by Strauss, Puccini, Vivaldi, Rossini and J.S. Bach. Tickets \$10 Bookings 9795 0203/9572 2687.

Sunday 21 June

Variety Night of the Stars Concert 7.30pm presented by B'nai B'rith. Bookings: 9527 1228.

Performances

Theatrette

Lipstick Dreams by Helen O'Connor and Simon Hopkinson. Directed by Ron Conroy. Performances 12, 13, 17 - 20 June at 8pm with a special matinee at 2pm, 14 June. Tickets: \$14 adult, \$11 concession includes pre-show sherries, supper and champagne. Bookings: 9553 0148.

Oak Tree House

a home for the arts

This delightful space is now open for arts-based activity.

- Do you have a workshop or series of classes that you'd like to run?
- Are you looking for a space to work?
- Do you have a group needing a meeting space?

Then contact Susan Pilbeam or Deborah Vanderwerp on 9524 3402.



Classic Virtuosi concert No. 2

featuring

Geoffrey Tozer, piano

Following Rita Reichman's highly successful all-Chopin performance in May, we are thrilled to present Concert No 2 featuring one of Australia's finest pianists. Geoffrey Tozer, whose exceptional piano technique is hailed both in Australia and internationally, will present a superb evening of Mozart, Schumann, Medtner, Spohr and Verdi on **Saturday 11 July at 8.15pm**

Glen Eira Auditorium, Corner Glen Eira and Hawthorn Roads, Caulfield



Geoffrey first performed on national television at the age of seven, and gave his first concerto performance at eight with the Melbourne Symphony Orchestra. At 14, he became and remains the youngest person to be awarded the Churchill Fellowship. He has recorded the three piano concertos of Medtner for Chandos, and also recently recorded the four piano concertos of Respighi with the BBC Philharmonic Orchestra under Edward Downes.

Cost: \$25 adults, \$19 concession (pensioners, seniors, students, unemployed)

Telephone bookings: 9685 5111.

Over the counter: The Malthouse Box Office, CUB Malthouse,

113 Sturt Street, South Melbourne

or: the Service Centre, Glen Eira City Council,

corner Glen Eira and Hawthorn Roads, Caulfield.

Information: 9524 3287.

GLEN EIRA ARTS COMPLEX PROUDLY PRESENTS



Tea dances
featuring



THE TED WHITE BAND

Tickets only
\$20



Sunday, 28 June

2pm to 5pm

at the **Glen Eira Arts Complex**

corner Hawthorn and Glen Eira Roads, Caulfield

Enjoy a great afternoon of social dancing on the superb *sprung floor* of the Auditorium
Chance to win the lucky door prize of tickets to the hit musical 'CHICAGO'

Special guest appearance by Australian & South Pacific Accordion Champion **Bernadette Conlon**

Free

practice hour from 1pm,
afternoon tea, parking
and spot prizes.

Tickets available through the
Service Centre, corner of
Hawthorn & Glen Eira Roads Caulfield
Bookings essential 9524 3333
Enquiries 9524 3371

Community diary

MEETINGS AND CLUBS

Bentleigh Life Activities Club offers opportunities to meet new friends and enjoy social activities such as carpet bowls, table tennis, solo, scrabble, music, golf, armchair travel, canasta, craft etc. New members welcome. Contact: 9563 2554.

Little Kids Contact Group Inc. Playgroup and Occasional Care Centre operates Monday and Thursday 9.15am-11.45am. Has relocated to the Uniting Church Hall, corner of Kooyong and Jupiter Street, Caulfield South. New members welcome. Contact: Zarla 9523 5981 or the Centre 015 836 256.

Glen Eira Community Forum will hold a public forum on Thursday 11 June at 8pm at Caulfield North Primary School, 186 Balaclava Rd, Caulfield North. Topic: **"Development - Striking a Balance"**. A panel of four speakers from various councils and perspectives. Entry is free and all are welcome to attend.

Caulfield Photographic Society meets every two weeks at St. Peter's Church Hall, cnr. Neerim Rd and Ames Ave. Murrumbidgee. All welcome. Meetings: 15 & 29 June at 7.45pm. Contact: Lorraine 9531 2596.

ARTS AND ACTIVITIES

Historic "Box Cottage" Joyce Park Jasper Road McKinnon will be open Sunday 28 June, 2-4.30pm with a display of Pioneer Memorabilia. Donation of 50 cents goes to the Moorabbin Historical Society. Contact: 9578 7060.

Caulfield Over 50s Dance Group Inc holds a dance every Monday afternoon 1-4pm at the Glen Eira Town Hall Auditorium. Practice begins at 12.30pm. Live music and tapes alternate. Admission: \$2 includes afternoon tea. Contact: Tony Bell 9578 5143.

The Victoria B'nai B'rith will hold annual *Variety Night of Stars Concert* at the Glen Eira Arts Complex on Sunday 21 June at 7.30 pm. Tickets at the door: \$15 and \$12 for pensioners and children. Contact: 9523 6536.

Bentleigh Progressive Synagogue begins a group focussing on bringing up children as good Jewish people meeting on the last Sunday of the month at 549 Centre Rd, Bentleigh at 10am. Next meeting 28 June.

A night of musical entertainment will be held on Sunday 14 June. \$15 and \$12 concession. Contact: Myra 9555 3061. A "Games night" to raise funds for the Synagogue will be held 7.30 Saturday 27 June. Contact: Dina 9570 4339.

SERVICES

Tune into Southern 88.3FM Council Hour Glen Eira Council takes over the air waves for an hour every month. The show features all the latest happenings from the council, interviews with locals and keeps you informed about events in your

community. Too good to miss! Tune in for the next show 18 June at 1pm.

The Caulfield Lions Club is looking for a project to support during 1998/99. They are seeking submissions from community groups in the area who want help with a particular project. Initial written submissions stating what help is required, the cost and purpose of the project should be sent to: The Secretary, PO Box 162, Caulfield South, 3162.

HEALTH & WELL BEING

Learn to meditate in a methodical and practical way with a qualified instructor. Procedures will be well explained until you master them. Venue: Oak Tree House (adjacent to Glen Eira City Offices) 256 Hawthorn Road, Caulfield 3162. Contact: Michael Antony after hours 9578 0235.

SOUTHERN MUSIC CLUB PRESENTS - RAY THORNLEY

known as **"Mr Popular"** after being voted the most popular organist for three years in a row. You can see him perform at 2 Arthur Street, Bentleigh on Wednesday 17 June at 8pm. Cost: \$3 members, \$5 visitors. You've heard the rest - now come and hear the best! **Sorry, no reserved seats.**

Moving to the music

Council's Exercise to Music classes are a great way for residents over 50 years to improve their fitness level. Led by a fully qualified instructor the classes include standing, floorbased, stretching and relaxation exercises. The classes are suitable for both men and women and aim to be fun and social as well as encouraging a better sense of well being.

With the added bonus of great music from the 40's through to today from popular artists including Nat King Cole, Frank Sinatra, Neil Sedaka, Elvis Presley, Whitney Houston, John Farnham and many more, exercising is a most enjoyable experience.

Recent surveys have shown exercise to be of great assistance in alleviating arthritic and back pain. Join now and improve your fitness in a fun, safe and social environment. Classes are available:

Monday 11am
40 Toolambool Rd, Carnegie

Wednesday 11am
314 Neerim Rd, Carnegie

Tuesday & Thursday 9.30am
Caulfield Recreation Centre, Maple St, Caulfield

Floor exercises to music - a great way to keep fit.

Tuesday 1.30pm-2.30pm**
Bentleigh McKinnon, Youth Centre,
Higgins Rd, Bentleigh

(**callisthenics-based exercises)

For further information on these classes, chair-based exercises, walking groups and table tennis please contact Cheryl Kennedy, Older Adults Recreation Officer 9524 3356.



Calendar of events

City of
**GLEN
EIRA**

Glen Eira City Council keeps a database of community events planned for the coming 12 months, as advised by community groups and organisations. The aim is to help groups plan ahead and avoid clashing dates for big events. To add material or to inquire about other events listings, phone 9524 3281.

Glen Eira News will publish a special six-month Calendar of Events in its July issue, which can be kept and put on a wall or noticeboard. Paid advertising space will also be available to businesses, at \$10 per column centimetre.

If you would like your event (between July 1998 and January 1999) listed in the next Calendar of Events, or to book a paid business advertisement, please send details by 15 June to: Calendar of Events, Glen Eira News, PO Box 42, Caulfield South 3162.

BLADDER PROBLEM?

Leakage, poor control, frequency, urgency, Persistent bed wetting?

Decreased sexual fulfilment due to weak pelvic floor muscles?

Advanced neuro muscular stimulation strengthens pelvic floor muscles and settles bladders. High success rate with a discreet home-based treatment that you control. No drugs involved. Consulting East Bentleigh and Berwick.

Sister Dorothy Stevens, Control Health Services, phone 9563 8299

Member of Continence Foundation and Royal College of Nursing Australia.

U3A Bus Tours

15 July, 10am-4pm

Join us on our popular Christmas-in-July visit to the Cuckoo Restaurant with its delightful smorgasbord and entertainment

19 August, 9am-5pm

The New Seal Rock Life Centre at Phillip Island. You've heard about it, now you can experience it. Visit this unique interactive all-weather display of fascinating marine life surrounding the Nobbies and Seal Rock. The bus is warm - the Centre is warm. An outstanding trip. **ENQUIRIES: 9572 0571 OR 9523 7862 (AH).**

ART CLASSES

Children's School Holidays Art Classes (6th, 7th, 8th July)

Afterschool Children's Classes

Day and Evening Art Classes (adult)

All mediums, classes suitable for folio presentation
Phone: 9564 8119

JUDO

Self defence, Concentration, Discipline, Co-ordination, Self-esteem, Enjoyment, Stress Release

BEGINNERS TO BLACK BELT - All Ages
YAMADA JUDO ACADEMY

6 Maple St, Caulfield South 9578 4460

Family Day Care turns 21

Care providers from Glen Eira Council Family Day Care celebrated the scheme's twenty-first birthday at a recent international dinner.

Care providers who have been with the scheme for 20 years reminisced about the number of children they have cared for and the changes they have witnessed as the scheme has grown and responded to the needs of families using child care.

Today the service is very multicultural with opportunities for families to have diverse cultural needs met when choosing a care provider.

Enquiries about home-based child care should be directed to Glen Eira Family Day Care on 9524 3461.

(From left) Broni, Nandita, Betty, Pauline, and Laura – providers from Glen Eira Council Family Day Care – share a birthday cake to celebrate 21 years of care giving.



Glen Eira's retailing renaissance

Glen Eira City Council has always recognized that a strong, vibrant retail sector is one of the keys to sustainable economic growth, with significant flow-on benefits to the community.

The importance of retailing in the City of Glen Eira is highlighted by the fact that over 20 per cent of the City's workforce are directly involved in the retail sector and generate an estimated annual turnover in excess of \$485 million.

To ensure that the retail sector, which is represented by some 40 or so shopping centres, is positioned to meet the expectations of retailing in the 21st century, Council recently commissioned a report on implementing a retail/commercial strategy.

The report has now been completed and will provide the basis for future planning, new retail,

and enhancement and re-positioning of existing retail centres, to provide an attractive, safe and vibrant environment that will attract and retain patronage.

Cr. Norman Kennedy, Chairman of Council's Business Development Portfolio said: "The report has identified some key issues and options that will significantly influence the future direction and positioning of Glen Eira's retail sector."

"It is important to Council that the community participates in giving its views on the findings of the report and we invite public comment from as wide a section of the community as possible."

The report is available for public viewing and open for comment until 30 June 1998 at the Glen Eira Service Centre and at the service counters of the municipal libraries.

For information contact: Gerhard Keilig on 9524 3384.

Glen Eira Safe Food Guide – update

The annual Glen Eira Safe Food Guide lists all food premises in the City of Glen Eira gaining 90 per cent (or above) in their 1997 Food Hygiene Audit (4 Star premises). The April 1998 issue of the Glen Eira News featured a three-page spread on the Glen Eira Safe Food Guide. Unfortunately, four premises which gained a 4 Star rating in 1997 were left out of both publications. These premises were:

Fong's Restaurant, 4/676 Centre Road, East Bentleigh, 9570 1121.

Traditional Cantonese Cuisine, with specialities such as Peking pork, sizzling beef dishes and a new vegetarian selection. Main meals from \$6.50 to \$13 to dine in (BYO) or Take Away. Trading Hours: Lunch Tuesday to Friday 11.30am-3pm and dinner seven nights a week from 4.30pm.

Sheli's Café, 306 Hawthorn Road, Caulfield North, 9272 5607.

Vegetarian Chalav Israel Kosher cuisine prepared under the supervision of Melbourne Kashrut to dine-in or take away. Smoke free. Specialities include blintzes, polenta, shakshuka and a large selection of deserts. Trading Hours: Sunday to

Friday 10am – 11pm and Saturday night from one hour after the Sabat until 2am.

Mussel's Fish and Chips, 126 Koornang Road, Carnegie, 9569 6300.

Mussels Carnegie is bright, vibrant and colourful, and offers excellent quality food with a focus on hygiene. Mussels offer top quality, fresh seafood cooked to order in the most light and tasty batter. Open for lunch: Tuesday to Sunday and for dinner 7 days. Call and order service: 9569 6300.

Chook's Corner, 791 Glen Huntly Road (cnr Hawthorn Road), South Caulfield, 9523 8473.

Caulfield South's charcoal chicken shop, has received a 4 Star rating with a score of 99.2 per cent in the Council's Food Hygiene Audit. Chook's Corner also received Council's 1998 Special Mention award. Chook's Corner specialises in: charcoal chickens, home made salads, souvlakis, and all types of Take Away foods. Trading hours: Monday to Saturday 9am-8pm.

Glen Eira City Council's Environmental Health Department sincerely apologises to these premises for this oversight.

GLEN HUNTLY Friendship Group

99 Grange Rd, Glen Huntly
Activities for May

June 11: Explore superb antiques in a Georgian style home in East Melbourne. Departs from the Melbourne Hilton on the Park at 192 Wellington Pde, East Melbourne (Tram stops 16 & 17), by 11.30am. A courtesy bus will take the group to the house. Tour lasts 1.5 hours. Cost \$7.50.

June 25: A relaxed day at Capalba Alpacas and Tourist Farm at Seymour. Departs 9am from 99 Grange Rd, Glen Huntly and 9.15 am from 185 Poath Rd, Hughesdale. Return 5pm.

Bookings: Margaret 9596 6124

TOILET TRAINING - the essentials!!

City of
GLEN
EIRA

You are invited to come along to this informal talk by Community Health Nurse/Psychologist **JENNY BURLEY** from Caulfield Community Care

WHEN: Tuesday 16 June, 1.30-3pm

COST: \$3

Are you tired of your toddlers' fighting???

You are invited to an informal talk on:

Your Toddler and the New Baby by Social Worker **SUSAN FRIEDMAN** from Caulfield Community Care

WHEN: Tuesday 7 July, 1.30-3pm

COST: \$3

Both talks will be held at:

Murrumbeena Maternal & Child Health Centre
105 Murrumbeena Road
Murrumbeena
Phone: 9569 5700

Caulfield champs on home turf

Caulfield Cricket Club has won the CUB sub-district cricket championship, defeating Preston by six wickets. Scores: Caulfield 4cc 292 to Preston all out 238.

President David Roberts said: "It was a tremendous effort, in a competition involving 28 clubs from Williamstown, Werribee, Melton and Ivanhoe across to Bayswater, Croydon, Noble Park to Moorabbin.

"The Victorian Sub-District Cricket Association has used the magnificent facilities at Caulfield Park to host the championship match for the past eight seasons. To Glen Eira City Council Recreation Department Linda Smith, Park Services Laurie Unwin and staff and to club curator Wayne Secombe thank you very much for your continued co-operation."

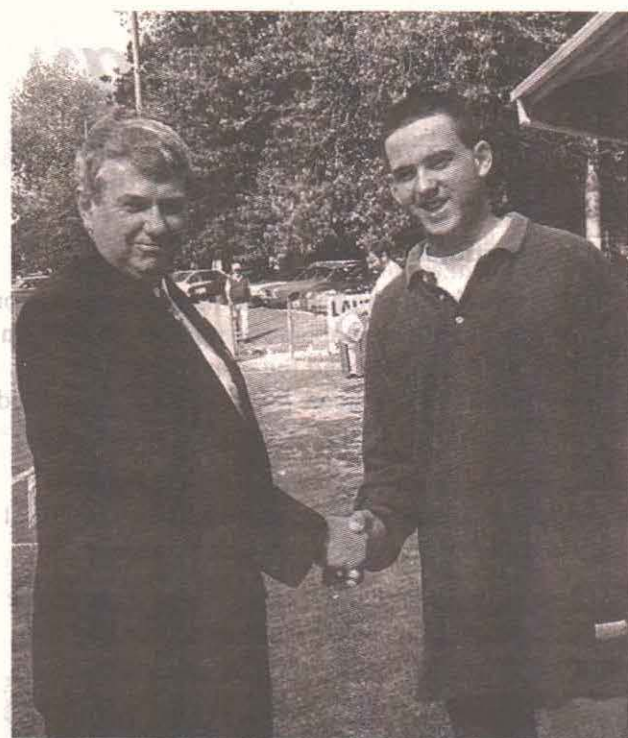
To celebrate the finals series, two luncheons were held. Guests at a pre-game brunch included Mayor Cr Barry Neve, VCA CEO Ken Jacobs, VSDCA

president Ken Fewster, Council's recreation co-ordinator Linda Smith, current Ryder medallist Peter "Pepe" Harper (ex-Ormond) and guest speaker Shaun Graf who is VCA operations manager.

The following day, the VSDCA "200" luncheon club held their seventh annual get together for all members who have played or umpired 200 or more games in the first eleven. Guest speaker was Victorian coach John Scholes. Of the 60 members at the luncheon, Caulfield was represented by Kevin Carmody, Harold Little, Keith Walker, Jack Sheehan and Don Rixon.

* For the second year running, curator Clive Ware and Glen Eira City Council have been rewarded for outstanding work in preparing the Moorabbin Cricket Ground at Moorleigh Community Centre in Bignell Road, by winning the VSDCA curator/ground of the year award.

Mayor Cr Barry Neve with Ryder medallist Peter "Pepe" Harper at Caulfield Park.



Children's rhymes increase fluency

Chinese-speaking mothers will soon be able to recite Australian nursery rhymes as well as their children as part of a Glen Eira City Council program to support parents of young children and help them develop English language skills.

Council's Maternal and Child Health Service has developed the Neighbourhood Support Program and runs two Chinese-speaking groups as well as a Solo Mothers group, a Fathers group, and a young Mothers group, on a regular basis.

The Chinese-speaking group meets at Jersey Parade, Carnegie every fortnight and has become very popular. An interpreter is provided, and speakers are frequently organised on topics identified by the parents. Once a month a Glen Eira Maternal and Child Health Nurse attends to answer any questions or concerns the parents might have about their children.

At the group's request parents are about to embark on learning nursery rhymes and popular children's ditties.



This will enable the mothers to practice their English and become familiar with what their children will learn when they join child-care centres, playgroups and kindergartens. At the same time we encourage the parents to teach the children songs from their own culture. Our other Chinese speaking group meets

Members of the Chinese mothers group and their children.

monthly at either Elsternwick or Caulfield Maternal and Child Health Centres.

For information on any of the Neighbourhood Support groups please contact: 9524 3404.

Library News



Webmasters

Don't miss out on the June Introduction to the Internet classes at the Glen Eira Library and Information Service. Classes are filling fast and are ideal for people with little or no experience in using the Internet.

At our classes you will learn:

- how and why the Internet developed,
- how the Internet works,
- what makes the Internet so popular today, and
- how to search the Web with confidence.

Our accredited trainers, small class sizes, "hands-on" sessions, laser printing facilities and take-home manuals give you a first-rate introduction to the Internet.

A one-hour Introduction to the Internet course costs only \$30.

Bookings and enquiries to Belinda at Caulfield Library: 9532 9466.

Don't be alarmed!

Glen Eira Library and Information Service is installing a new security system.

Many of our customers have expressed interest in library security measures. As part of our responsibility to protect community and Council assets, the security system will help us to ensure all items are borrowed through the loans system.

Membership of the Library and Information Service brings with it responsibilities as well as privileges. It is the responsibility of all library members to ensure library materials in their possession have been correctly borrowed before leaving the library.

Should the alarm sound as you walk through the gate, staff will come to assist you. They will ask you to present any library materials in your possession to ensure they have been correctly borrowed.

We trust you will welcome this initiative. Our aim is to ensure that library collections will continue to be enjoyed by all.

Do you live, work, study or play in Glen Eira?

If the answer is yes, you can become a member of the Glen Eira Library and Information Service. Not only can residents or ratepayers join the libraries, but anyone who, for instance, comes to work, goes to school, attends a sporting club, or meets friends in Glen Eira is able to join.

Become a member at Bentleigh, Carnegie, Caulfield, Elsternwick or McKinnon libraries - it's free!

Bentleigh Library: 9557 8278
Carnegie Library: 9563 0971
Caulfield Library: 9532 9466
Elsternwick Library: 9532 9321
McKinnon Library: 9576 8397

Top tennis

Caulfield Recreation Tennis Club invites local residents to watch its men's and women's State grade matches during the Victorian Tennis Pennant competition.

Come along and see some great tennis - eight singles matches, followed by eight doubles matches - starting at 12.30pm at Caulfield Recreation Tennis Club, cnr Murrumbena and Leila Roads, Murrumbena. Entry is free. Dates: 28 June, 5 and 19 July, and 9 August. For more details, contact 9551 5036.

Heart Week Competition

Winners of the Heart Week Competition were: Suzanne Beckers of Carnegie who won the cookbook and Stephen Mansfield of Elsternwick who received the kids pack.