

Volume 23 October 1998

Glen Eira City Council corner Hawthorn & Glen Eira Roads, South Caulfield 3162
Phone: 9524 3333 Fax: 9523 0339 Email: mail@gleneira.vic.gov.au

Talking to the trees



Mayor Cr Barry Neve took time out in Caulfield Park last month to "make contact" with a few of our older friends, including this mature Lilly Pilly tree.

The Mayor was getting to know some of the more significant trees in our City in preparation for the development of Council's Significant Tree Register.

Landscape Assessment Officer, Amanda Crago said Council was hoping to develop the tree register to assist in planning for the protection of our City's botanical heritage. Registering the trees worthy of National Trust or Heritage recognition would streamline the process involved in assessing planning applications and protecting significant trees.

"Ultimately, such a register will provide protection for registered trees by way of the planning scheme and Local Law. The purpose of the Significant Tree Register is not to hinder development but to raise

awareness in the community of significant trees and their importance to the landscape when considering any development," she said.

Council is seeking nominations from the local community as to possible inclusions in the Significant Tree Register. Nominations will then be assessed for possible inclusion on the register. The criteria for assessment is modelled on the National Trust of Australia program for identifying Significant Trees and includes the following categories: historic, ecological or environmental, outstanding size, unique growth form, rarity, aesthetic value, or particular age, or of horticultural or genetic value.

Nomination forms are available from the Service Centre at the Town Hall and local libraries and need to be returned to the Town Planning department by Monday 16 November.

New draft policy unleashed

Council has released a new draft dog policy and is calling for public comment.

The new policy, which greatly simplifies the leash free and on leash areas in the parks, has been formulated in response to an audit of all parks in the city conducted by Recreation Services. The audit sought to review the effectiveness of current policies and whether they were "user friendly".

Recreation Services Manager Linda Smith believes with the new policy will eliminate any confusion. She said the new areas have been simplified and more easily defined using existing pathways and fences. Signage would also be simplified and placed prominently at park entrances so that dog owners and members of the public know where the leash free and on leash areas are.

Ms Smith said the policy would be displayed at Council offices and at the Bentleigh Library until 23 October while public comment is sought.

Alongside the simplified dog control areas Council will be enforcing the picking up of dog litter. Failure to do so can attract a fine of \$200. Pooper-scoopers are provided in all parks but it is recommended that owners carry a plastic bag to clean up after their dog when not in parks.

Ms Smith said: "This is all part of responsible dog ownership and something the community has spoken loudly on. Cleaning up after our animals will ensure our City and waterways remain clean and free of pollution from dog litter."

Council invites public comment on the draft policy. Please send all comments to Recreation Services, PO Box 42 Caulfield South 3162 or email recservices@gleneira.vic.gov.au.

Inside

News

Road resealing	Page	3
Disability Action Plan adopted	Page	4
Beating the Millennium Bug	Page	5

Features

Alzheimer's Carer Group	Page	3
Carnegie Urban Village Structure Plan	Page	6&7

Regulars

From the Chamber (Council decisions)	Page	2
Arts	Page	8&9
Community Diary	Page	10
Youth Page	Page	11
Recreation News	Page	12

MAYOR'S column



Recently I spoke at the Glen Eira Community Forum on the subject of "Sport and Recreation" in the City of Glen Eira.

When preparing for that subject, I turned my mind to what the term "recreation" really means. It is a catch-all phrase, but

generally means some activity we undertake in our leisure time for enjoyment, relaxation and stimulation. But it means something different to everyone.

As a Council, we have the responsibility to provide a vast range of "recreational" facilities. This has evolved over many years, from the basic provision of sporting areas, parks and resources, to the provision of buildings, facilities and programmes to be used by residents. But many of these cater to the more active styles of recreation. We also need to cater to pursuits which do not involve active physical recreation — such as reading, computer and electronic, learning, community service and general socialization.

For example, I believe people generally would not see community service as recreation. But it is, or at least can be. As I move around the City, I meet numerous people involved in community service, real volunteers. They may be involved in welfare or charity organisations, such as Red Cross or CWA, in sporting or social clubs, or in organizations such as University of the Third Age or an Historical Society.

The one thing common to all of these is that these people are happy to be helping others. They actually derive pleasure and satisfaction from their activities. And that is what recreation is all about.

I encourage all people to participate in recreational pursuits in the City, but especially encourage people to become involved in a Community Service organisation. The type is not important, just being involved is what matters. Volunteers give a great deal to our society but I am sure the feeling of self esteem and satisfaction they receive far outweighs this aspect.

— Barry Neve
Mayor

Deadline for Glen Eira News —

Editorial contributions and advertisement bookings are welcome for the Glen Eira News. The next issue will be released on 3-5 November. The deadline is **Monday 12 October**.

Please note: due to time constraints, the deadline for the December issue will be one week EARLY: 2 November.

Advertising rates are available by contacting Robyn on 9524 3281.

To submit editorial material for consideration, fax 9532 8367, email on mail@gleneira.vic.gov.au or write to: Glen Eira News PO Box 42, Caulfield South 3162.

Facilities for hire

Are you planning a family reunion, 60th birthday, wedding, conference, wedding anniversary or special event? Why not consider hiring one of Council's facilities as your next venue? Venues range in size and facilities, are located throughout the city and are available for hire at very competitive fees.

For example, the Glen Huntly Park Function room is a very popular venue with its outstanding outlook and modern facilities. This room can seat 160 people and has excellent catering facilities. Or, for something completely different, why not hire the Conservatory in Caulfield Park or a rotunda in one of our many parks for your wedding or special event?

Bookings are available to individuals, groups, schools, and organisations, for seminars, meetings, theatre performances, rehearsals, exhibitions and



dinner dances. All Council's venues are available on a casual or regular basis.

For a full list of facilities for hire see the resource guide or contact our Service Centre. Why not make an appointment with our Facilities Officer to inspect the halls? Contact Fran or Greg on 9524 3253 or 9524 3383.

From the Chamber... Recent Council decisions

Rezoning requested

Council has agreed to ask the Minister for Planning to approve the rezoning of a property in Clairmont Avenue, Bentleigh from Light Industrial to Residential. Council felt that as the site was next to existing residences, it would be a prime location for redevelopment for further residential purposes.

Velodrome upgrade

The second stage of refurbishment of the velodrome in Packer Park, Leila Road, Carnegie, has been scheduled to start in October/November this year. The works will include excavation of the existing surface and sub-base and reconstruction of the track.

Funding for the works will come from a State Government grant, the Carnegie/Caulfield Cycling Club, Council and advertising sponsorship.

Year 2000 plan under way

Council has adopted a detailed action plan aimed at ensuring all of its systems are protected from the

so-called 'Millennium Bug'. Concern has been raised throughout the business world about the potential implications of what will happen at the end of the current decade when computers everywhere start using the date '2000' instead of the two-digit '98' or '99', as any equipment containing computer chips may be affected.

The plan involves identifying, assessing, testing and rectifying equipment and systems to make sure these continue to operate unaffected after this time.

Remaining council meeting dates for 1998

Tuesday, 13 October
Wednesday, 4 November
Monday, 23 November
Tuesday, 15 December

All meetings commence at 7.30pm in the Council Chamber, corner Hawthorn and Glen Eira Roads, Caulfield, and are open to the public.

Councillor contacts

JASPER WARD



Cr Barry Neve

Ph: 9524 3225 (Council)
Fax: 9563 9403 (AH)
Mobile: 0412 218 468

Cr Russell Longmuir

Ph: 9557 4438
Fax: 9557 8717



ORRONG WARD



Cr Noel Erlich

Ph & Fax: 9533 0054 (H)
Mobile: 0412 218 485

Cr Alan Grossbard

Ph & Fax: 9533 0052 (H)



MACKIE WARD



Cr Norman Kennedy

Ph: 9564 8395
Fax: 9564 8402
Mobile: 0419 379 540

Cr Veronika Martens

Ph & Fax: 9579 7072 (H)
Ph: 9579 0297 (H)
Mobile: 0419 218 474



GLEN EIRA CITY COUNCIL

PO Box 42 Caulfield South 3162 Phone: 9524 3333 Fax: 9523 0339
Email: mail@gleneira.vic.gov.au Internet: <http://www.gleneira.vic.gov.au>

Road Resealing ready to go

Council will be carrying out bitumen resealing works in 165 streets throughout the city starting the last week of October and continuing to the middle of December.

The resealing process consists of spraying hot bitumen onto the road surface and then covering with crushed stone. This provides a new wearing surface and seals the road against intrusion by water.

Water is one of the major causes of road deterioration as it weakens the base and leads to deformity in the road, and surface failures such as potholes. Like painting a house, resealing protects the underlying structure and prolongs its useful life. It is an effective and economical way of preserving the City's road assets.

Council will give residents two day's notice, through letter box drops, when resealing work will commence in their street. Unfortunately, more notice is not always possible due to program changes forced by the weather or traffic conditions.

Please don't park your cars in the street on the days the work will be conducted. Parked cars prevent us from sealing the section where the cars are and, in some cases, this means we have to leave the street for another day. While the work is in progress, the street will be closed to all traffic, but this is usually only for a short time, generally no more than an hour.

For about a week after the sealing is done, there will be loose stone on the road and drivers need to exercise caution. Council will sweep the street to remove the loose stone after about a week. Again, the delay may be a bit longer depending on weather and traffic.

Council appreciates the work may cause residents some temporary inconvenience and apologises for that, but will endeavour to minimise the disruption. The long-term benefits of having good roads at an economical cost outweigh the short-term inconvenience.

DISCLAIMER

The information in this publication is of a general nature. The articles contained herein are not intended to provide a complete discussion on each subject and/or issues canvassed. Glen Eira City Council does not accept any liability for any statements or any opinion, or for any errors or omissions contained herein.

Alf — a carer's story

by Robyn Szechtman

I dropped Alf off to visit his wife in the nursing home after our interview and went in for a quick hello. Florence's face lit up when she saw her husband and she hurried over to greet him. She obviously recognises that he is a special person, but can't remember his name.

Alf's love for her is painfully obvious and he visits Florence daily, but each farewell is difficult and can still bring Alf to tears.

Alf goes through the same painstaking process each time they meet. He tells her, "I am Alfred, we have been married for more than 61 years."

"Have we?" she asks with a smile. All memories of their life together and their children have long been erased. Florence has even forgotten how to eat and must be fed intravenously via a tube to her stomach every three hours.

One of the hardest things for Alf to accept about Florence's illness is that she will never return home. He had problems adjusting to her increasing slowness and confusion, finding it difficult to grasp that she was just not capable of the things she used to be able to do. Alf regrets that he was not more patient.

Alzheimer's requires a major adjustment on the carer's behalf as they must slowly let go of the person they used to know, and this is hard to do without putting up some sort of fight. Roles change. The parent becomes the child, the lover becomes the patient. Grieving for the lost person becomes a constant part of daily life.

"A few months ago when people asked me how Florence was I couldn't answer. I would walk away and start crying. I am getting past that stage now. People get embarrassed, they don't know what to say," Alf said.

The onset of Alzheimer's can be difficult to pinpoint. It can start off as a series of mishaps, sometimes amusing, sometimes just puzzling. Florence started to lose interest in favorite activities like reading and going to the ballet. Looking back, Alf thinks one of the first indications of the illness occurred in 1995 when a woman asked for directions to the next street and Florence could not remember its whereabouts although she had been living at that address for 39 years. Hiding objects became a frequent occurrence. Alf's lawn bowl disappeared, only to turn up in the bread tin.



Alf (centre right) with other carers

Alf looked after Florence in their home for approximately two years before a series of mini-strokes determined that a high level of care was needed and a nursing home had to be found. Making the decision to place a loved one in a nursing home can be devastating.

It is difficult for others to fully understand the different range of feelings and experiences carers can go through. Being able to talk to people in the same situation can be a lifesaver. Alf regularly attends a Carer's Support group co-ordinated by Margo Anderson from GlenCare, Glen Eira's Home and Community Care Services.

"We meet, and it's just comforting to talk and rather suprisingly, there are at least three people there whose spouses have now passed on, but they still come. They are trying to give comfort rather than receive. Everyone has a different story. One has been looking after his mother for years, one woman's mother used to get out and walk around without any clothes on. Sometimes someone comes along to give a talk." Alf said.

Margo receives a lot of positive feedback from the Carers who often say how important it is to talk without having to explain or justify their situation or actions. When Florence was still at home she used to attend GlenCare's ADASS program which provides activities so Alf could get some time out.

Alzheimer's is a devastating illness, but we mustn't forget the people sufferers leave behind. If you would like to find out more about the services GlenCare can offer, please call Margo Anderson on 9524-3247.

Toddlers and food

City of
GLEN
EIRA

You are invited to come along to this informal talk by:

Dietitian Margaret Cox
of Caulfield Community Care Centre

WHERE: Glen Huntly Maternal and Child Health Centre
Cnr Royal & Rosedale Avenues
Glen Huntly
Contact: 9572 5123 or 9572 5126

WHEN: Tuesday 27 October
1.30-3pm

COST: \$3

Toilet training

City of
GLEN
EIRA

...the essentials!

You are invited to come along to this informal talk by Community Health Nurse Jenny Burley of Caulfield Community Care

WHERE: Bentleigh Maternal and Child Health Centre
542 Centre Road, Bentleigh
Contact: 9557 2359

WHEN: Tuesday 13 October
1.30-3pm

COST: \$3

Free! Hard rubbish & bundled branch collection

City of
GLEN
EIRA

For limited quantities

■ Check your brochure for details and collection dates

and

■ Call Service Centre to make a **BOOKING NOW!**

Ph 9524 3333

A place for everyone

by Myrine Hawksworth

Being aware of people with disabilities is not a special talent, it's good common sense according to Human Services Advisory Committee member Brian Caulfield.

Himself a sufferer of a physical disability in the form of childhood polio, Brian said people have a natural tendency to want to rush to the assistance of someone who appears to need aid — disability or no.

"But, if I've fallen I'd rather get up to a certain stage by myself, before anyone hauls me up," he said.

"It's a matter of respecting someone's dignity, and it's best to ask if they need help first, rather than just rush in," he said.

Along with three other committee members, Council staff and chairperson Cr Noel Erlich, Brian has worked to develop Council's Disability Policy and Action Plan over the last 12 months. The other committee members were Judy Moylan, Debbie Panakos and Russell Oke.

Brian said he joined the committee to "give something back" to a community which had supported him for many years, and to be a voice for other disabled people.

As a member on the committee Brian said he was "very excited" about Council's new Plan which was developed through consultation with representatives of disability groups and staff.

The plan has a number of strategies identified under four broad headings: compliance with the Disability Discrimination Act, development of a culture of inclusion, ensuring a physically accessible environment, and community leadership.

Chairman of the committee Cr Noel Erlich said Council is committed to making the City of Glen

Eira an accessible and inclusive place for everyone and has been working with the community to identify and overcome any physical and social barriers to access and participation by people with disabilities.

"The plan acknowledges Council's responsibility to work towards ensuring that no person with a disability is discriminated against in using Council services, and to facilitate full participation in the community," he said.

Cr Erlich said Council recognises planning needs to take account of people with a disability. This means that infrastructure, facilities and services must be as accessible as possible to all members of the community.

Council has recently appointed an adviser for 12 months to help staff implement the plan and staff training has already begun. Further staff development will be provided to ensure staff have the knowledge and skills to contribute to the organisation meeting its obligations under the Disability Discrimination Act and in implementing the plan.

Other actions which have been identified include addressing physical access, co-operative arrangements with disability agencies, accessible information strategies, profiling the needs of people with disabilities, and ensuring practices and procedures are in line with the action plan.

Brian said generally the appreciation of people with disabilities had changed over the years in a very positive way. He remembers times when it was "stiff" if a disabled person couldn't access a building, but said people were now a lot more aware of the issues faced by people with disabilities and he believed Council's Disability Policy and Action Plan would continue to address these issues.

Celebrate National Family Day

Glen Eira Children and Family Services Network in conjunction with the Glen Eira City Council is once again organising a Children's Fun Day at Princes Park (opposite the Caulfield Recreation Centre, Maple Street and Hawthorn Road Caulfield South).

To be held on Sunday 25 October from 1pm to 4pm, the Fun Day centres on families and children and aims to promote non-profit groups which offer services to children and families in Glen Eira.

Free activities will be provided for children up to 10 years of age and to ensure the day is genuinely FREE

there will be no stalls selling food. Pack a picnic, bring your food and drinks and join in the fun to celebrate National Family Day.

There will be roving performers through the park, amongst the activities and lots happening in the Recreation Centre during the afternoon.

Activities to choose from include: trampolining, rock climbing, mini golf, children's aerobics, mask making, face painting, fairy wands, PMP physical activities, construction activities and role play toys.

Contact Judy on 9596 1481 or Pat on 9568 0520.

Sash Cord Windows

OVER 40 YEARS EXPERIENCE IN REPLACING

BROKEN CORDS

- ◆ Bottom sash (2 cords) \$40
- ◆ Both sashes (4 cords) \$50

If not stuck and under 2.5m above floor

Service of pulleys and slides included
Reduction for 2 or more windows

TUBULAR (spiral) balances replaced

John Moline AH: 9596 6124

Cut out this ad and keep for future reference

**SENIOR CITIZENS'
WEEK, 1999
13-28 March**

Grants

Local Senior Citizens' Clubs and Groups interested in holding an event for Senior Citizens' Week 1999, may apply for a grant* and/or advertising assistance.

Contact: Cheryl Kennedy Recreation Officer for Older Adults on 9524 3356.

Glen Eira City Council
PO Box 42
Caulfield South 3162

*Applications for grants must meet criteria set out by the Victorian Senior Citizens' Week Advisory Committee.

City of
**GLEN
EIRA**

State carer of the year



Victorian Careprovider of the Year has been awarded to one of Glen Eira's very own carers. East Bentleigh resident and Family Day Care Careprovider Denise Horley was recently recognised for her 10 years of service to family day care.

Denise, who is married with two of her own children, said she enjoys her role as a careprovider. She is committed to providing a service which is valued by parents and offers children an environment filled with a variety of experiences. Denise takes great pride in her profession and holds a Home Based Carer's qualification and participates in ongoing training opportunities. She is pictured above with three of her day care children.

Denise will attend the National Carer's Convention The Value of the Carer in Sydney from 16 to 18 October, where she will be the Victorian finalist for the "National Carer of the Year Award".

IMMUNISATION SESSIONS

If your child missed vaccination at school or your pre-schooler needs vaccinations prior to school, visit one of Council's immunisation clinics in October.

Immunisation will be available on the following dates and times:

- **6 October** 9.30-10.30am at St Peters Church, corner Neerim Road and Ames Avenue Carnegie
- **14 October** 9.15-10.45am at the Glen Eira Town Hall, 1st Floor Auditorium corner Hawthorn and Glen Eira Roads, Caulfield South
- **21 October** 9.15-10.45am at the Glen Huntly Maternal and Child Health Centre, corner Royal and Rosedale Avenues, Glen Huntly
- **27 October** 6.30-7.30pm at the Glen Eira Town Hall, 1st floor Auditorium corner Hawthorn and Glen Eira Roads, Caulfield South
- **29 October** 1.30-2.30pm at St Christopher's Church, 4 Mackie Road, East Bentleigh

NEEDING ASSISTANCE?

PROFESSIONAL COUNSELLING FOR

- Victims of crime and other traumas ■
- Transport and work accidents ■
- Grief, loss and depression ■
- Relationship problems ■

contact

**DAVID
JOHNSTON**

BA, BEd (COUNSELLING), MAPS Registered Psychologist

Telephone: 9571 2111

CARNEGIE PARAMEDICAL CENTRE

Registered
Psychologist

Over 20 years of
experience

Don't let the M-Bug *bite!*

We've been hearing a lot about the Year 2000, none the least of it to do with the scourge of the millennium — the Millennium Bug.

Beware! Every one says, the world will grind to a halt if you haven't taken the appropriate steps to squash the bug before the clock ticks over...

As part of Year 2000 compliance requirements, Council's IT Department has undergone an investigation into the issues surrounding the Millennium Bug and developed a Business Risk Minimisation Plan to safeguard all business systems which rely on computers and other date dependant devices.

The problem with computers and the Year 2000, arises because programmers have traditionally stored only the last two digits of the century (ie: '98' instead of '1998') whenever they needed to store a date. This was common practice, in an effort to save computer storage space. The Year 2000 problem occurs when a computer tries to use a date that is in or after the year 2000.

Information Technology adviser Ilias Antipas explained that until 1999, computers have been able to determine that a later date, for example '1988', falls after a preceding number, '1987', because the final two digits are numerically consecutive. Many computer systems will however, store the millennium year not as 2,000 (a consecutive date after 1999), but as '00'. Suddenly '00' will no longer be later than '99'.

Mr Antipas said: "In simplistic terms most computers or devices which process dates will produce erroneous data when they attempt to determine the number of years between 1999 and 2000. For instance, is 00 minus 99 equal to negative 99, to zero or to some other value?"

He said that technically the "millennium bug" may affect anything that contains a computer chip, including: main computer systems, personal computers, telephones and PABX systems, building security systems, fax machines, traffic lights, and lifts. Not to mention air conditioners and heating systems, microwaves, video recorders and a host of appliances you would not normally think of as "computers".

So what can people do to reduce the risk of being affected by the Big-M bug?

"For many large corporations, businesses and

individuals, the Year 2000 is a real problem but unless residents are relying on a computer for business reasons, we suspect they won't really need to worry too much. Everything should keep working- but the microwave and the VCR might click over to display a year of '00' rather than of '2000'.

"One thing you can do is test your appliance yourself by setting the time and date ahead to simulate the coming of the millennium. Set the time for a couple of minutes to midnight on December 31, 1999, and then see what happens when it clicks over. With all the hype surrounding the Year 2000 most people will be waiting for something miraculous to happen, so don't be disappointed if nothing does!"

"If something does happen, you know you have a problem. But, unfortunately, if nothings happens you still cannot be sure," he said.

Mr Antipas said people running a computer for their home business or other account-keeping purposes relying on dates, would be best advised to check the documentation that came with their computers. Verifying that the 'bios clock' was Year 2000 compliant was simply a matter of checking to see that it used four digits to store the year rather than two and ensuring that the Operating System could handle the long year format.

"If you have any doubts, you should check with your supplier or purchase one of the numerous software packages that have been created to interrogate your computer and tell you if it is Year 2000 compliant. The better packages can even fix them if they are not," he said.

"Likewise with your software. If you are running any business, accounting or other critical software, you need to check with the manufacturer whether it has been designed to cope with the changeover. If the program compares, processes, or performs calculations with or on dates, you will probably have a problem if the program is not Year 2000 compliant. It is best to confirm compliance with the software developer in all cases if you would prefer the peace of mind," he said.

Council's Business Risk Minimisation Plan was adopted in May this year and is already being implemented— including the replacement of its critical business systems. The final stage of implementation is due to finish in February 1999.

Special dinner delivery

Carnegie resident and long term volunteer Vern Collister received his Meals on Wheels dinner special delivery last month! Mr Collister had the opportunity to chat with Mayor Cr Barry Neve, before enjoying his regular meal from Glen Eira Food Services.

The Mayor was out and about for the 6th annual National Meals on Wheels Day, acknowledging the work of our volunteer meal delivery team.

Mr Collister has been volunteering for Meals on Wheels for 24 years, first as a driver and now as a jockey, and is a recipient of the service himself two days per week. He was also presented with a certificate of appreciation for his commitment to the service.

Cr Neve said Food Services were urgently calling for volunteers to become part of the team.

"Meals are delivered through our extensive network of volunteers, who give their time freely to the Meals on Wheels service. But we urgently need both drivers and jockeys to help provide this vital service to our community," he said.

Cr Neve appealed to anyone who could offer their services to contact the Meals on Wheels Service Volunteer Coordinator on 9563 6611 from Monday to Friday between 9am and 1pm. The Meals on Wheels service operates from the Glen Eira Food Services office located at 15 Truganini Road, Carnegie.



Vern Collister receives a certificate of appreciation for 24 years volunteer service from Mayor Cr Barry Neve.

THE TASTE OF ITALY COMES TO CAULFIELD

Fresh Homestyle Pasta
Mediterranean Seafood
Gourmet Pizza

BYO Wine Only

Eat in or Take Away

Open Tuesday - Sunday 5.30pm - Late
Business Lunches for group of 10 or more
Thursday and Friday. Bookings Essential

467c Hawthorn Road, Caulfield. 3162

Ph: 9533 0833. Fx: 9645 3666



Neerim Home Business Community

Trade and Info Fair 11am to 3pm

Tuesday 13 October 1998 at Glen Huntly Pavilion
cnr Neerim Rd & Booran Rd.

12.30pm: Talks Subject Health Wise Business.

Sarah Joyce (Psychologist) — Are you stressed out? Management strategies.

Derek Moore — Nutrition & Healthy Lifestyle.

Valda Bawden — Glen Eira Council Health Plan & Issues.

1.30pm: Exchange: experiences running a home business.

Network, get to know: people, facts, products, services and promote yourself.

For info on TradeFair Stands and InfoMart Trestles
Ring LYNN on 0413 964 646

Entrance: \$8 Members: \$6

Next function Tuesday 10 November 11am to 3pm

Subject: Marketing and Communication with talks on clear communication, the unique selling proposition, the itch that sells, and Glen Eira City Council plans for business.

For info on NHBC ring Orek on 9578 3531

Urban Villages

— diversity on your doorstep!

The concept of an urban village springs all kinds of images to mind. Memories of a time when you knew everyone in your area — the local shopkeepers, the baker, the grocer, the doctor and dentist — and they all knew you and your children by name. Everything you needed was right there, on your doorstep.

Today's urban village concept can't recapture time gone by, but it can go some way towards recreating a diverse and alive community, maximising the benefits of an area and providing something for everyone.

Glen Eira Strategic Planner Fiona Johnstone said an urban village is defined as "a suburban centre of either a 400 or 800 metre radius having a range of community facilities".

She said the principles of an urban village were to create centres of activity and break down the barriers of zoning to encourage mixed uses. An urban village would feature a mix of activities and land uses with employment and living opportunities co-located with community facilities, entertainment, dining and cafes, all focused on fixed transport routes.

"Instead of having a hard line between areas zoned for business or residential, an urban village concept encourages the mixing of a number of uses within an area," Ms Johnstone said.

"In Carnegie for example, industry is clearly defined as being towards Dandenong Road. It's well-placed there and will not be encouraged to extend anywhere else. However, in terms of the retail and commercial uses, the study identifies opportunities where these uses may be expanded to better support the greater area and suggests integration with residential development," she said.

Ms Johnstone said urban villages focus around public transport and a retail strip and comprise a defined area which offers a concentration of a broad range of activities, retail, commercial, industrial, community support and residential.

Ms Johnstone said Council is undertaking preparation of these Urban Village Structure Plans to set parameters for making decisions in response to planning applications.

"The structure plans are about adopting an overall policy for an area's future direction. Without such a plan, decisions would be made on an ad hoc, site by site basis," she said.

"The structure plans identify opportunities, though Council will fundamentally be reactive rather than proactive. We won't be making any overnight changes in any of the three centres. For example, in Carnegie the only physical change or development under Council's control is the development of the multi-purpose community centre. We're looking at combining the existing community services into one comprehensive facility."

Structure Plan options for Bentleigh and Elsternwick will be available for comment shortly, and summaries and maps will be presented in forthcoming issues of the News.

Carnegie — Urban Village Structure Plan

In early 1997, Council commissioned PLM P/L, planning consultants, to prepare a report containing structure plans for Glen Eira's three main shopping strips — Bentleigh, Carnegie and Elsternwick. The report presented three options per centre and was broadly advertised in October 1997 and community meetings were held in December. The community expressed concern about the lack of notification and the complex nature of the report. In response to this, Council formed a community consultative committee for each of the study areas, to work with Council officers to form one structure plan.

The Carnegie committee, consisting of one trader and four residents, has convened regularly since April of this year. It has developed the three options originally presented by the consultants into one option, taking into account previous comments received from the community and the members' own experiences. The map below and detailed description of each precinct defines the option prepared for the Carnegie Urban Village Structure Plan.

Should you wish to refer to the original report prepared by the consultants, it is available for viewing at the Carnegie, Bentleigh, Elsternwick and Caulfield libraries.

PRECINCT 2 — INDUSTRIAL AND RECREATION

- Retain industrial/wholesale and recreational uses.
- Restrict retail activity to the larger type stores on sites with frontage to Dandenong Road.
- Pursue the provision of vehicle access from the service road along Dandenong Road into the shopping centre via Egan Street.
- Discourage the development of residential accommodation and office space.
- Formalise parking along Egan Street.
- Provide a bike/walking path along the railway line connecting Carnegie and Monash University.

PRECINCT 6 — MEDIUM DENSITY RESIDENTIAL

- Retain and encourage the area's function as a medium density residential area.
- Retain the child care centre, meals on wheels centre and food services at 17 Truganini Road.
- Commercial activities in Rosstown Road should not be extended.

PRECINCT 3 — RETAIL HUB

- Retain and encourage the ground floor retail function of premises along Koornang Road.
- Encourage development of residential and commercial uses on the upper floors through an increase in building heights.
- Encourage the retention of uses such as post offices, hardware stores, and banks on sites with a frontage to Koornang Road.
- Encourage evening uses — restaurants and cafes
- Promote usage of the existing pedestrian links between Koornang Road and the car parks with clear signage and lighting.
- Improve identification of the shopping centre's entrances through the installation of signage.
- Discuss the possibilities of a right turn arrow in the traffic signals at the intersection of Koornang Road and the Princess Highway with VicRoads.
- Promote the proximity of the Glen Huntly Road tramline and investigate its redirection towards the shopping centre with the PTC.

PRECINCT 1 — MIXED USE

- Retain residential, retail and industrial uses.
- Council should purchase the PTC owned open space adjoining the railway if it is offered for sale, and develop it for a park.
- Encourage cafes with outdoor seating in the area surrounding the proposed park.
- Encourage high intensity/multi-storey residential development that is of a similar scale to the existing built form along Woorayl Street; elsewhere sympathetically designed multi-storey is encouraged.
- Improve the connection between the retail centre and commercial activity to the north through the provision of pedestrian access between Woorayl Street and Arrawatta Street.
- Construct an overpass to connect the north side of the railway line and the commuter carpark and trip shopping centre on the south.
- Provide bicycle storage facilities at the station.

PRECINCT 5 — MIXED USE

- Retain the existing uses — community facilities car parks, residences, and light industries.
- Locate the proposed multi-purpose community facility within this precinct (see Community Centre item for further discussion).
- Encourage the PTC to undertake an overall beautification program of the station, including formalising and extending the carpark.
- Encourage an integrated development in the area to the south of the station and railway line, eg a multi-storey building of retail at ground level and residential on upper levels with associated parking.
- Illuminate and landscape the public car parks in Shepperson Avenue, whilst providing an improved pedestrian connection between the car park and Koornang Road.
- Airspace above the public car parks could be developed for commercial and residential uses.

PRECINCT 7 — RESIDENTIAL

- Retain the variety of residential uses within this area.
- Ensure that any residential development is sympathetic with the existing character of the area.
- Encourage higher density residential development along Dandenong Road.

PRECINCT 8 — RESIDENTIAL

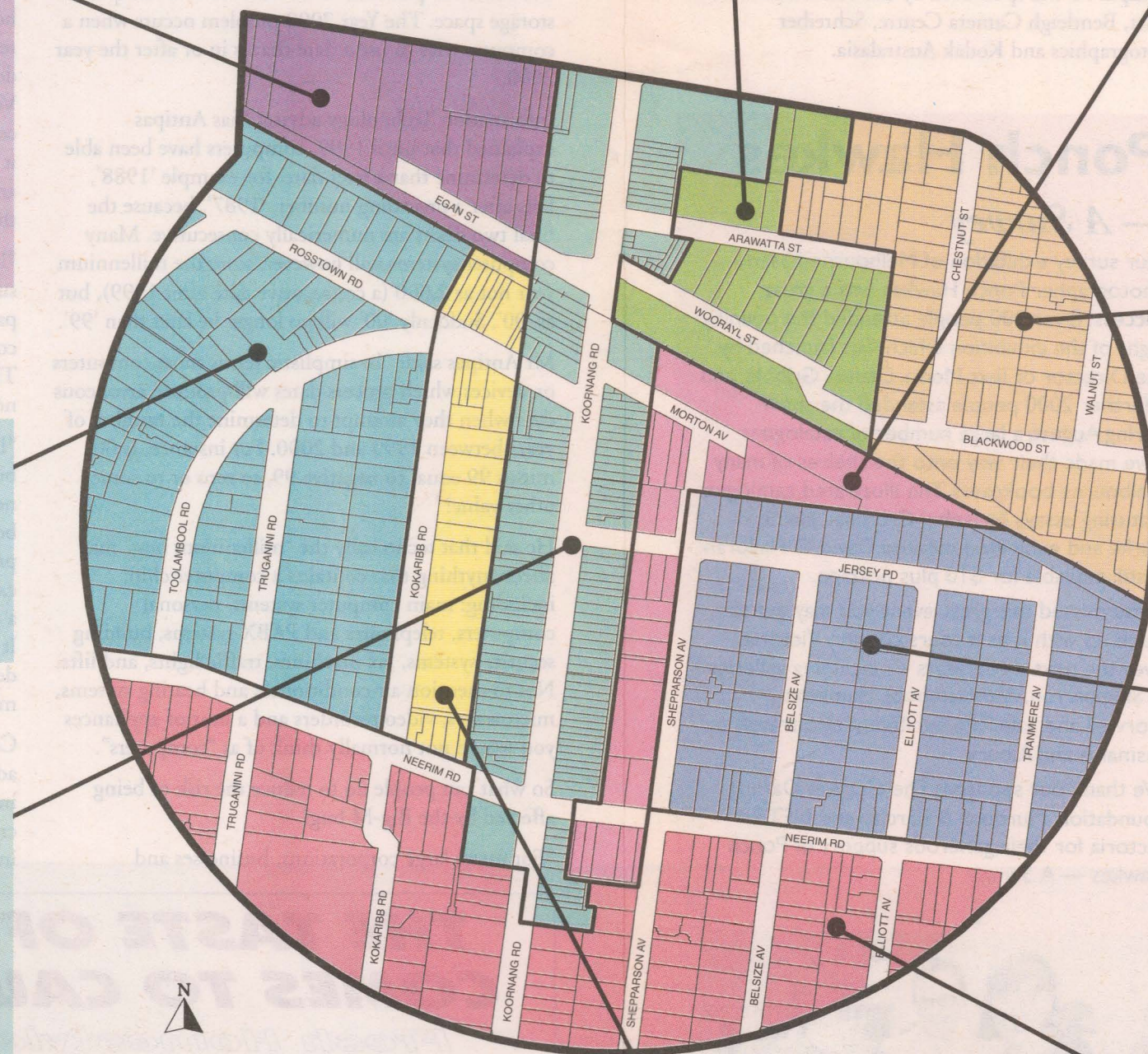
- Retain the variety of housing catering for differing housing groups.
- Encourage elderly accommodation within this area.
- Encourage the elderly citizen centre at 314 Neerim Road to relocate into the new community centre in Shepperson Avenue. Council should then consider selling the site for a medium density housing development.

PRECINCT 9 — RESIDENTIAL

- Retain the variety of housing within this area.
- Ensure that any residential development is sympathetic with the existing character of the area.

PRECINCT 4 — MIXED USE

- Retain the mix of uses such as the car parks, residences, supermarket, shops and commercial uses.
- Northern carpark should have improved landscape and illumination. The toilet block in the southern car park should be upgraded.
- Acknowledge the redevelopment potential of the car park areas for commercial or residential uses. Adequate car parking must be provided.



Community Centre

- Build a new community centre at the intersection of Jersey Parade and Shepperson Avenue that provides for co-location of services already provided in the area.
- Close Jersey Parade to all vehicle traffic between Koornang Road and Shepperson Avenue to provide a landscaped pedestrian mall, with the new community centre extending across the mall and incorporating properties on both the north and south sides of Jersey Parade.
- Provide a ground level walk through to connect pedestrians between Koornang Road and the residential area to the east.
- Consider the provision of a direct and safe pedestrian connection between the community centre, the station to the north, and the carpark to the south.
- Encourage the establishment of food outlets with access/frontage onto the mall.
- To provide a better opportunity for a well-designed and integrated community centre, Council should purchase the two residential properties in Shepperson Avenue (No. 5 and 7).
- The development should replace the existing public park and provide additional parking.

The process

The process involved in developing the Carnegie Urban Village Structure Plan into a local policy which can be incorporated into the Planning Scheme has the following major stages:

- October 1998** Public exhibition of the Structure Plan for six weeks
- December 1998** Public meeting held for public to voice concerns
- Early 1999** Council meeting to consider revised structure plan
- Early-mid 1999** Planning Scheme Amendment is prepared and exhibited to the public. Persons with properties directly affected will be notified again
- Mid 1999** Planning Conferences held if required
- Mid-late 1999** Council meeting to consider submissions
A decision will be made on whether to proceed with the amendment unaltered, to alter the amendment and proceed, or to abandon the amendment
- Late 1999** Independent Panel appointed by the Minister to hear submissions
- Late 1999** Council considers the panel recommendations and can:
a) adopt the amendment with or without any changes suggested by the panel, or
b) abandon the entire amendment

The dates shown in the above schedule are approximate only and are subject to change

For more information:

Should you wish to obtain a copy of the complete option, contact Council's Planning Department on 9524 3374. If you have any further inquiries, please contact Fiona Johnstone on 9524 3300.

ARTS *Arts*

Photographic skill acknowledged

The Glen Eira annual youth photographic exhibition Youthpix 98 enjoyed a substantial increase in entries for both categories with works submitted by independent young artists as well as students from TAFE colleges, state and private secondary schools and university art schools.

Presented in association with the Caulfield Rotary

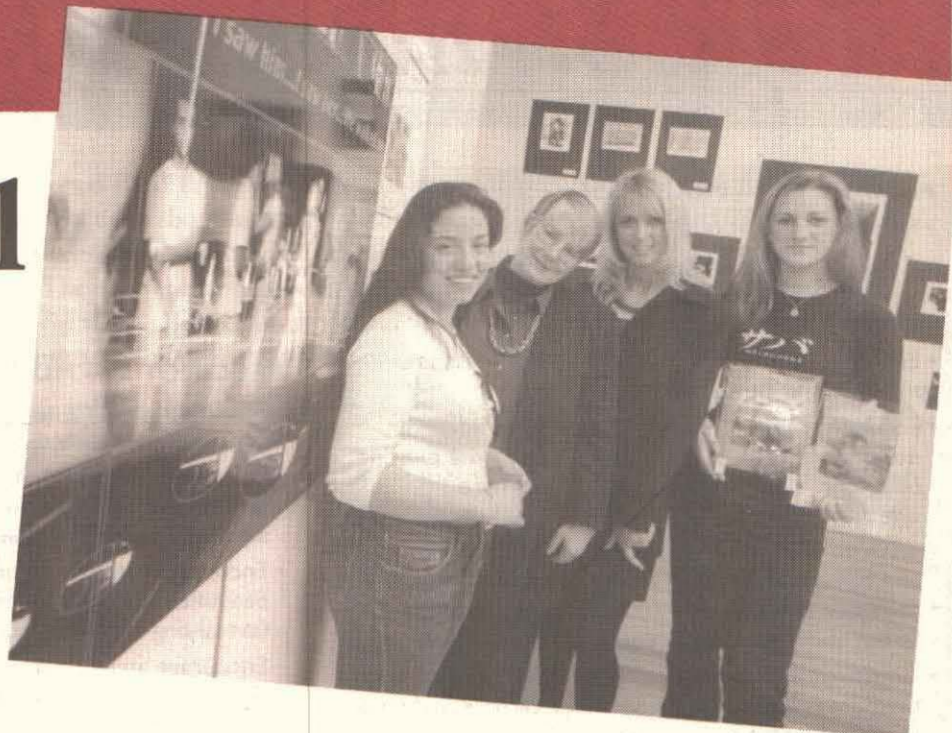


David Mel, 11, was commended for his photograph titled 'Having a Break'.

Club, the award was revamped this year with the Melbourne School of Art providing \$1600 in cash prizes for the open section and \$1600 in tuition in the secondary school section.

Max Creasy won First Prize of \$1,000 in the Open section. His entry was a panoramic colour work depicting life in a newly built outer suburb. Brad Haylock of Glen Huntly was awarded second prize for his clever slide series titled *The Woods*, and Jessica Apthorpe was awarded third prize for her stirring thoughts on AIDS.

In the secondary section, Loreto Mandeville Hall scooped the pool to win all prizes. First prize of \$1,000 of tuition at the Melbourne School of Art was awarded to Nancy Sposato for her sophisticated digital work depicting a contemporary rendezvous. Charlotte Hickey and Alice Penna were awarded second and third prize, respectively.



Above: Winner of secondary school section Nancy Sposato (left) with Director of Melbourne School of Art Kay Brewster, Loreto Mandeville Hall teacher Sandra Jane, and third prize winner secondary school section Alice Penna.

Youthpix 98 was sponsored by the Melbourne School of Art, Bentleigh Camera Centre, Schreiber Photographics and Kodak Australasia.

Exhibitions

1998 Silk Cut Award

15 to 31 October

To be opened by Lorraine Elliott, Parliamentary Secretary to the Premier's Department for the Arts on **Wednesday 14 October at 6pm.**

The Silk Cut Award is a national competition, introduced in 1995 to encourage the making and appreciation of linocut prints. Top Australian printmakers have taken part in the competition and previous winners include Deborah Klein, Jennifer Marshall and Kaye Green.

The Silk Cut Award is now recognised as the showcase for the exciting and versatile linocut medium and is the largest national art prize and exhibition of printmaking in Melbourne.

Forty-one of the nation's most talented printmakers have been included in the Open Section of the exhibition which contains small, precisely worked images, together with large-scale multi-panelled prints where in one instance, computer technology has had a hand in 'drawing' the image into the lino tiles, and in another, layers of fabric have been bonded inseparably with the more traditional print on paper. Submissions to the competition includes some of the most visually arresting and thought-provoking prints recently produced in Australia.

Linocuts by 26 primary and secondary school finalists from around Australia will also be on display.

The award is sponsored by Duraloid Pty Ltd who

distribute linoleum made in Holland by Forbo Krommenie. Silk Cut takes its name from the versatility and effortlessness that linoleum affords.



One of 41 finalists to feature in the exhibition: Heather Shimmen's 'Valentine - A Rival in the Field' 1998 linocut on paper and organza.

Ponch Hawkes

— A Survey

Our survey exhibition of Melbourne-based photographer Ponch Hawkes was a great success. Over 300 people attended the opening night of the exhibition which was launched by the Director of Text Media, Dianna Gribble, and a further 2000 people attended the show during August; a large number of catalogues have made their way onto the shelves of many Melbourne bookcases. The illustrated catalogue featuring essays by Isobel Crombie, Janine Burke and exhibition curator, David O'Halloran is still available for \$10 plus postage.

If you missed this great event you may get to catch up with it as it tours country Victoria over the next three years — including galleries in Shepparton, Warrnambool, Hamilton, Morwell and Sale. The exhibition also travels to Tasmania and Albury.

We thank our sponsors The Gordon Darling Foundation, Murdoch & Barclay and NETS Victoria for their generous support of Ponch Hawkes — A Survey.



Left to right: Artist Ponch Hawkes, Curator David O'Halloran, and Director Text Media, Dianna Gribble at the opening of the exhibition.

Straight from the heart



melbourne festival

14 October — 1 November

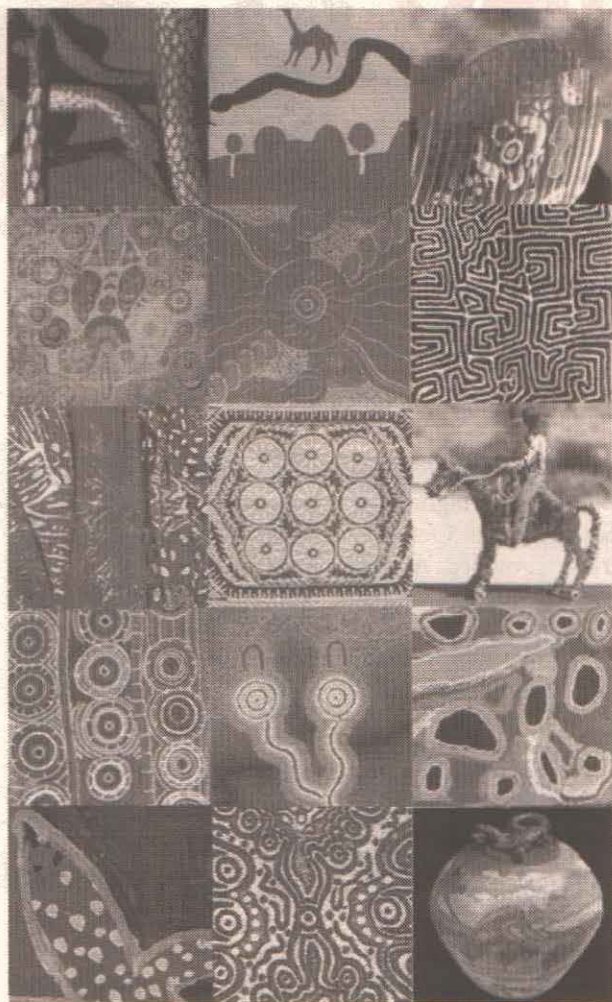
Officially opens Saturday 17 October at 2pm.

This exhibition profiles contemporary Aboriginal art and craft from Central Australia and features a wide range of work from painting, printmaking, textiles and glass. It will be the first comprehensive view of the Aboriginal art centres of Central Australia. Straight from the heart is part of the Melbourne Festival's program of visual arts.

Art centres in Central Australia have provided a vehicle for communities and individuals to express their cultural identities. The involvement of these communities has also established an important means by which individual artists derive an income from sales of their work, which in turn benefits the entire community.

The exhibition will include dot painting for which the central region is renowned. It also features slump glass from the Mutijulu community, weaving from Ngaanyatjarra, homewares from Keringke Arts, ceramics from Hermannsburg and batiks from Utopia and Ernabella.

Straight from the heart is a project of Desert Incorporated, the Araluen Centre for the Arts and Entertainment, and the Glen Eira City Gallery. Sponsored by Visions Australia, the Gordon Darling Foundation and the Australia Council.



A collage of works presented in the exhibition.



Oak Tree House Tutors' Group

Oak Tree House is pleased to present a wonderful array of specialist courses available to people of all ages in Semester Two 1998.

- Ceramics • Creative Thinking
- Creative Writing
- Drama for Young People • Drawing
- Feltmaking • Painting • Parenting
- Porcelain Doll making • Printmaking

An Oak Tree House Spring Open Day and an Information Evening are being planned, with opportunities to meet tutors and find out more about courses. Please direct your inquiries to either Susan Pilbeam or Deborah Vanderwerp on 9524 3402.

NOW AVAILABLE

Studio space boasting excellent natural light. Ideal for all artists. Reasonable rental. Please contact: 9524 3402.

WHAT'S ON IN OCTOBER

Gallery

9 to 11 October

Bonsai Society of Victoria – an exhibition of bonsai displays and information presented by the Bonsai Society of Victoria. Bonsai plants of all sizes and ages will be on show and available for purchase. A must for gardeners and lovers of this unique Japanese art form. Admission charges apply.

14 to 31 October

1998 Silk Cut Award for Linocut Prints – a national exhibition featuring 41 of the nation's most talented printmakers and 26 finalists in secondary school division.

14 October to 1 November

Straight from the heart – the first comprehensive exhibition of contemporary Aboriginal art and craft from Central Australia featuring painting, works on paper, woven items, textiles, wooden artifacts, ceramics, glass and jewellery.

Performances

Sunday 11 October

Shalom Association Performance.

Bookings and information contact: 9532 9033.

Thursday 22 October

Rodgers and Hammerstein Songbook Concert featuring songs from Oklahoma, State Fair, Carousel, South Pacific, The King and I and The Sound of Music at 11am and 1.30pm.

Tickets: \$10 Groups of 10 plus: \$9 For bookings and information contact: 9557 5493.

Saturday 24 October

The Music Lovers' Society presents the 35th Ida Doubleday Bequest Recital — Brett Jones, piano. Works by Beethoven, Schumann, Debussy and Sibelius. Concert commences 8pm.

Tickets: \$12 Concession: \$9 Children: \$5.

For bookings and information contact: 9571 0850 or 9870 0318.



TaleTold
Writing/editing/training

writing courses

Writing courses at Oak Tree House commence in early November

Creative Writing: For those who wish to free the trapped writer within
Intro to playwriting: for those who have always wanted to write a play (radio & stage)

Playwriting: a more advanced course

Call 9532 4287 for more details

<http://web.one.net.au/~taletold> taletold@one.net.au

Glen Eira Youth Orchestra

A public meeting was held on 6 October inviting people interested in supporting or participating in the newly-formed Glen Eira Youth Orchestra. For those who could not or did not attend the meeting, we would still like to hear from people interested in playing, volunteering to assist with running the orchestra, sponsorship, tutors, a coordinator, and a conductor.

For further information or to register your interest please contact Deborah Vanderwerp at the Glen Eira City Council on 9524 3402 or Dennis Freeman at Wesley College on 9524 6646.

Mailing list

The Arts Complex has a wide range of information available. Please indicate which area is of interest to you and we will include you on our mailing list(s). Feel free to tick all boxes if desired.

Exhibitions Special events Classes/workshops
Seminars Concerts/music performances Arts & (newsletter)

Name: _____

Address: _____

Postcode: _____

Send to:

Rosanna Verde, Arts Liaison Officer, Glen Eira Arts Complex, PO Box 42, Caulfield 3162.

Facsimile: 9524 3399

or email: rverde@gleneira.vic.gov.au

Website: www.citysearch.com.au/mel/glenciraarts

COMMUNITY *Diary*

Meetings & Clubs

The Gladys Machin Senior Citizen's Club invites people to join in various activities in a friendly atmosphere, including: indoor carpet bowls, Crazy Whist, Bingo, Bridge and even a visiting podiatrist. Contact: 9528 6427.

Caulfield Garden Club presents their Spring Flower Show on 25 October at 567 Glen Huntly Road, Elsternwick at the Uniting Church Hall 2pm-5.30pm. Official opening at 2.15pm by Mayor Barry Neve. Contact: 9528 6480.

"Do fears of loneliness, rejection and failure overwhelm you?" Michael Muldoon will present *Overcoming your fears* at the Glen Eira Christian Community Church corner Walsh Street and Lillimur Road, Ormond 10am-12noon on 13 October. Contact: 9570 4380 or 9578 4790.

Society for Growing Australian Plants Caulfield and Districts Group. Next meeting: 6 October, Hughesdale Community Centre, corner Poath and Kangaroo Roads, Hughesdale. Speaker: Colin Judkins on Wilsons Promontory. Visitors welcome, plants for sale. Contact: Allan 9598 1855.

Neerim Home Business Community is holding their first meeting on Tuesday 13 October at the Glen Huntly Pavilion, corner Neerim and Booran Roads 11am-3pm. Contact: Orek on 9578 3531 or David on 9578 2730.

Caulfield Combined Probus Club meets first Wednesday each month at 10am in the Ashley Ricketson Centre, 262/294 Kooyong Road, Caulfield (in front of the Caulfield General Medical Centre). New members welcome. Contact: Ted Hills on 9563 6595.

The Victorian Lupus Association will meet on Sunday 11 October at 2pm. Contact: Enid 9509 2753.

Caulfield Photographic Society meets every two weeks at St. Peter's Church Hall, corner Neerim Road and Ames Avenue Murrumbeena. All welcome. Next meeting: 19 October at 7.45. All welcome. Contact Pam: 9570 4617.

Services

People with Disabilities and their carers can collect information from service providers at a Disability Expo, Moorabbin Town Hall, 5 November 2-9pm. Admission is free. Contact: Judy, MOIRA Child and Family Support on 9532-1316.

Southern Citizen Advocacy — your ability to handle every day matters would assist an adult with a disability to participate in community life. Short orientation program begins soon. Contact: 9576 0155.

Hall to let — carpeted and spacious 200sq. metres (2150sq. ft. approx.) at 112 Booran Rd. Competitive rates include heating and ceiling fans for hot weather, good natural light and florescent lighting. Kitchen access for light refreshments. Contact: 9571 3932.

Events and activities

Caulfield Over 50s Dance Group Inc will be holding a Twilight Dance to celebrate Daylight Savings on 26 October, 6.30pm-10pm with live music provided. Admission: \$2 includes a plate of food for supper. Contact: Tony Bell 9578 5143.

Historic "Box Cottage" Joyce Park, Jasper Road, McKinnon will be open Sunday 25 October, 2-4.30pm when Mr E Terry will give a photographic Exhibition. Donation of 50 cents goes to the Moorabbin Historical Society. Contact: 9578 7060.

Talk and display of Porcelain Dolls is being held by the Bentleigh Red Cross as a fundraiser on 29 October at 1.30pm at the Uniting Church Hall, 497 Centre Road. Donation: \$5. Contact Valina: 9579 1153.

The Hughesdale Art Group invites you to their 35th Annual Exhibition and Sale of Paintings at the Hughesdale Community Centre, corner Poath and Kangaroo Roads, Hughesdale. Opening night: 3 November at 8pm and exhibition continues 4-7 November, 10am-9.30pm.

Indoor Bias Bowls. Bentleigh RSL Centre Road is recruiting new players to participate in this fun loving sport. Practice will be held every Thursday at 7.30 pm starting 1 October. Contact: 9557 4617.

Elsternwick Croquet Club Inc. invites you to come and play on Thursday 29 October at 1pm for persons of all ages. Bring flat-soled shoes. Contact: 9571 7935.

Music Lovers' Society presents 35th Ida Doubleday Bequest Recital at the Glen Eira Arts Complex Auditorium on Saturday 24 October at 8pm. Features Brett Jones piano, works by Beethoven, Schumann, and Debussy. Cost: \$12, concession \$5, family \$25. Contact: 9571 0850 or 9870 0318.

Annual Concert for Senior Citizens of the City of Glen Eira. Great afternoon of music and songs. Afternoon tea provided. Cost: \$3. Organised by the Raoul Wallenberg Unit of B'nai Brith. For transport, contact: Bina 9528 5436 or Sylvia 9532 9108.

Parish Spring Fair will be held at St Giles Uniting Church, Murrumbeena Road, Murrumbeena on Saturday 10 October 9-1.30pm. Trash and treasure, cakes, pony rides, craft and sausage sizzle.

Southern Music Club proudly presents Gail Dibben in concert at 2 Arthur Street, Bentleigh on 18 November at 8pm. Doors open 7.30pm. Cost: members \$3, non-members \$5. Tea and coffee provided. All welcome.

Caulfield South Primary School celebrates its 70th anniversary year with a range of events culminating in a country fete on 14 November. Contact: 9578 3718.

Health and recreation

McKinnon Basketball Association is looking for people to join one of their established clubs or to register a team or individual entry. Contact: Bob Mann on 0417 393 207 or 9563 7647.

CHILDREN'S CLASSES AFTERSCHOOL

Available October-November
Includes painting, drawing, clay, screenpainting

ADULT CLASS TUESDAY EVENINGS

Available 13 October-24 November

SMALL GROUPS TO SUIT INDIVIDUAL NEEDS

159 Poath Road Murrumbeena

Phone: 9564 8119

ART
CLASSES

JUDO YAMADA JUDO
ACADEMY
6 Maple St, Caulfield Sth
9578 4460

Self defence, Concentration,
Discipline, Co-ordination, Self-esteem,
Enjoyment, Stress Release

BEGINNERS TO BLACK BELT - All Ages

Toilet training

...the essentials!

You are invited to come along to this informal talk by Community Health Nurse Jenny Burley of Caulfield Community Care

WHERE: Town Hall Maternal and Child Health Centre
Corner Hawthorn and Glen Eira Roads, Caulfield
Contact: 9524 3403

WHEN: Tuesday 10 November 1.30-3pm
COST: \$3

City of
GLEN
EIRA

UBA BUS TOURS

11 November 9am-5pm
Visit the New Seal Rock Life Centre
at Phillip Island.

Another opportunity to see this unique display of fascinating marine life surrounding THE NOBBIES and SEAL ROCK.

The spectacular electronic installation enables you to view thousands of Australian fur seals, both in and out of the water, as they play or tend their pups.

Educational displays. Well stocked gift shop. Wander the boardwalks and enjoy views of this magnificent Victorian Coastline.

All inclusive bus, entry fee, and 3-course light luncheon, all for a special fee of \$35.

ENQUIRIES: 9572 0571 OR 9523 7862 (AH)

BLADDER PROBLEM?

- Leakage, poor control, frequency, urgency
- Persistent bed wetting
- Decreased sexual fulfilment due to weak pelvic floor muscles?

Advanced neuro-muscular stimulation strengthens pelvic floor muscles and settles bladders. High success rate with a discreet home-based treatment that you control. No drugs involved. Consulting East Bentleigh and Berwick.

**Sister Dorothy Stevens
Control Health Services**
Phone: 9563 8299

Member of Continence Foundation and Royal College of Nursing Australia.

UBA BUS TOURS

4 day / 3 night trip
22/23/24/25 March 1999

GLENROWAN, ALBURY, MURRAY RIVER CRUISE ON PS "CUMBEROONA", FAMOUS NUG NUG RANCH, BHARATRALIA WILDLIFE PARK, RUTHERGLEN WINERIES, SPECTACULAR MITTA MITTA VALLEY, DARTMOUTH DAM, EILDON WEIR CRUISE.

Something for everyone on this tour! Every day a touring adventure and each night we return to the comfort of our motel in Myrtleford.

FOR MORE DETAILS OR COPY
OF ITINERARY
PHONE 9572 0571 OR 9523 7862 (AH)

Glen Eira

Youth Page



New trophies mark youth *excellence*

The City of Glen Eira is full of talented and dedicated young people!

Mayor Cr Barry Neve presented trophies and grants to recent recipients of Youth for Excellence awards to travel to a wide variety of exciting events.

Created in 1993 the Foundation for Youth Excellence provides grants to young people who excel in education, sport or the arts, and need support to travel to a national or international competition or event. Glen Eira now provides an annual contribution of \$20,000 for the Foundation.

Past recipient Ellen Donnan, who plays the viola, said a highlight of receiving an award was meeting other young musicians from around the world. "The time I spent in Canada and America was probably the best time of my life and I learnt so much from the experience," she said.

Awards were presented to:

Christopher Howlett — to perform in the McArthur String English Exchange Tour

Adrian Trimarchi and Daniel Warner — to compete in the World Championships Trampoline competitions in Sydney



Christopher Howlett

Rachel Truscott — to compete with the Victorian Women's Hockey in the National Championships on the Gold Coast

Priya Schubach — to perform with the Kanagawa International Marching Band Festival in Yokohama, Japan

Fiona Lathleiff — to attend the United Nations National Youth Conference in Brisbane

Dean Podger — to attend the National Basket Ball Games in New Caledonia for men under 22 years with the Victorian Basket Ball Association

Anja Grant — to perform with the Genimiami Orchestra in Europe.

A generation of no hoping losers — *are we?*

by Skye Holcombe

Are we a 'school dropout, dole-bludging, drug-using, body-piercing, suicide-possessed' generation? That's what the headlines scream with yet another disapproving look from a disgusted elder.

We cannot congregate at shopping centres, open spaces or amusement parlours without raising fear or suspicions that we are dealing drugs, instigating fights and generally getting up to 'no good'. We are negatively generalized as a whole by the media, who never seem to fail in publishing an article or showing footage that in some way, weaves its way back to the belief that we are a generation of 'no-hoping losers'.

The image of a stereotyped adolescent has been created in the form of an unco-operative, disrespectful, unmotivated, untrustworthy and seemingly worthless teen. We say, thanks for the vote of confidence; whom did you say was to run the country in twenty years time?

Chief Inspector Rod Norman who heads the Victoria Police Youth Advisory Unit said: "There is a common belief that there are lots of groups of young people up to no good, but the fears have little basis in reality".

The media describes a group of three or more teens standing around as a 'gang' and insinuates that all

kids, who walk the streets after dark, are looking for fights with gangs. Sadly, there are many teens caught up in drugs and gangs, but the media does not realize that with every word they print, they are bruising the image of the large majority of us who are law-abiding and friendly citizens. Stereotyping and labeling our generation as one, causes unnecessary fear to misinformed people who believe everything they read, as well as encouraging the elderly to fit new and stronger locks to their doors and windows.

An article published in The Age in May 1998 stated that juvenile crime rates in Victoria have been stable for years. It also mentioned that the nature of the crimes being committed by youth were minor, such as shoplifting and theft rather than assault or homicide. With acknowledgment to the fact that our generation is hardly a bunch of fun loving, harmonious, drug, alcohol and cigarette free youths, we are not advocates of the Devil or the 'Seeds of Satan' as the media would have you believe.

So next time you're walking down the streets of Glen Eira and you see a crowd of teens approaching, think twice before crossing the road in an effort to avoid us. And remember we're not all bad so give us a break — PLEASE!

From the Editor

Hi guys! Well, here we are, getting heaps of stuff published and sorting through the mountain of material that lands on the desk here at Youth Services. But we want more! Yep, you heard right, we want MORE! So keep sending anything you think we might want — articles, photos, poetry — you name it, we want it... Especially if it's got something to do with youth and the City of Glen Eira.

So, to make life easier for you all, here are our details again:

Phone: 9524 3283 (Judith)
Fax: 9523 0339

Post: Glen Eira Youth Services,
PO Box 42,
Caulfield South, 3162

or e-mail: pike@netspace.net.au
jbruce@gleneira.vic.gov.au

Hope to hear from everyone really soon,

Daniel

New Service at the *Why?* Stop

by Isabel Machuca and Judith Bruce

The Why? Stop Youth Information Centre in Carnegie now has a new service for job-hunters and for those having difficulty obtaining suitable clothes for interviews — a Clothing Library.

Unemployed people can borrow suits, skirts, shirts and pants as well as shoes and ties. The service is free to those who have been referred to the Clothing Library by an employment service. For those without a referral, the charge for borrowing clothing (apart from shoes and ties which are free to borrow) is \$3.50 per item. This covers dry-cleaning costs.

The Mount Martha Community Contact Inc. has established clothing libraries in various locations around Victoria with the assistance of a grant from the Department of Education, Employment, Training and Youth Affairs. This service is very beneficial for unemployed people who may be lacking confidence. By "dressing for success", people can gain more confidence, an important ingredient for these challenging encounters.

The Clothing Library has a wide variety of styles and sizes to choose from as most of the clothes in the library have been donated by popular retailers. Experienced staff at the Why? Stop can help you find a combination that feels comfortable and appropriate for you. Why? Stop staff can also help people with resume writing and interview techniques.

Though based at the Why? Stop Youth Information Centre, the Clothing Library is open to all age groups. The Why? Stop is open every weekday from 2pm to 6pm and the Clothing library can be accessed during these hours. For more information call Jody or Isabel at the Why? Stop on 9572 5389 or drop in to 54 Rosstown St, Carnegie.

Recreation News

Summer Sport

– it's all happening!
by Byron Douglas

Thousands of sports people will be out in Glen Eira's parks playing competitive sport this summer.

More than 160 cricket teams are based in the municipality, half of which are junior teams. This represents almost 2000 people just playing cricket. Athletics will also be in full flight with the major venue being the Duncan Mackinnon facility.



There are 28 teams playing softball with the Moorabbin Softball Association playing at Bailey Reserve. Sixteen of these teams are junior teams, which demonstrates junior development is a high priority for clubs in the municipality. Netball and baseball will also run their usual competitions. Many people may not be aware that the

Carnegie/Caulfield cycling club operates in the city. The club is based at the Velodrome at Packer Park and welcomes new members.

For many Glen Eira people, donning the whites and hats for a game of lawn bowls is the perfect summer fun. Hundreds of people will be involved in summer competitions for both men and women. Members of the Caulfield South Bowls Club are pictured above right enjoying a game.

While you are out and about on Saturdays and Sundays over summer take time out to have a look at the games in progress. It is greatly encouraging that thousands of people of all ages each week are training

and participating in sport, contributing to a healthier life style. And don't forget when the weather really gets hot, there's always the option of a lazy lap or two in one of Glen Eira's Swim Centres...

There are also opportunities for you to be part of a team with a sporting club, if you would like to know of the options near you, please contact Recreation Services on 9524 3455 or email recservices@gleneira.vic.gov.au.



In Brief

Sports injury prevention seminar series

An information seminar about sports injury prevention is being held to launch the seminar series. High profile speakers from the sports and health sector will provide information. Funding for the seminar series was developed through a joint initiative of the Cities of Bayside, Kingston and Glen Eira and provided by the Department of Human Services. The first of the series is expected to attract an audience of up to 1000 people and will be held at the Moorabbin Town Hall on 15 October from 7–9.30pm. Further seminars will be held in Glen Eira early next year.

Finals history in the making

Congratulations must go to two local clubs who have made local sporting history. Carnegie Football Club won their first ever premiership when their Reserves



won the grand final. This was their first premiership in their 19-year history. Monash Gryphons made it in to the grand final for the first time ever. Whilst they did not win on the day we know big things are in store for them next year after such a successful season.

Sports club seminar a success!

Recently Recreation Services held a seminar for sports clubs on changes to the new incorporation laws and on public liability. Both speakers gave important insights for club representatives on both these issues. Feedback from those who attended was positive as they found it worthwhile and informative.

Glen Huntly Friendship Group

99 Grange Road, Glen Huntly

ACTIVITIES

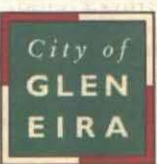
October 22: Bus trip to Morwell in Gippsland. At this time of the year Gippsland is at its most beautiful with rolling hills of vibrant green. Includes a tour of the Morwell Power Works.

BYO lunch or buy at the Power Works cafeteria. Cost: \$20. Bus departs: 185 Poath Road, Hughesdale at 9am and 99 Grange Road, Glen Huntly at 9.15

November 12: Come along and enjoy a fun day. Bring your favourite game/poem/puzzle/story/etc. 10am–12noon. Morning tea. Cost: \$2.

Bookings: Margaret 9596 6124

Free mulch



Glen Eira Park Services will load up your trailer or ute with mulch for free!

When: Saturday 17 October from 8.30am to 1pm

Where: at the rear of the Caulfield Bowling Club in Caulfield Park (enter via the driveway on Balaclava Road).

Come back as many times as you like. Bring your garbage bags, your car boot, or even your wheelie bin and fill them yourself.

The mulch comes from wood chipped prunings from around the City, and is always available for residents to help themselves.



Magic Melodies

DAYTIME CONCERTS
GLEN EIRA ARTS
COMPLEX AUDITORIUM
(former Caulfield Town Hall)

Corner Hawthorn & Glen Eira Roads Caulfield

'SHOWS INCLUDE A LOVELY MORNING OR AFTERNOON TEA'

"Book now to be part of the fun"

COST OF TICKETS	
Individual tickets	\$10
Groups (10 plus)	\$9
Three Show Series	\$27

**BOOKINGS AND INFORMATION
CONTACT: 9557 5493**

SHOW 1 Rodgers and Hammerstein Songbook

Thursday 22 October
11am & 1.30pm

SHOW 2 Donald Cant

Thursday 19 November
11am & 1.30pm

SHOW 3 Christmas Spectacular

Thursday 17 December
11am & 1.30pm

**PLEASE BOOK EARLY OR BOOK SERIES TICKETS
SO YOU DON'T MISS ANY OF THESE
GREAT SHOWS**

BOOKING COUPON

I would like to attend
Please tick: Number of tickets per show:

<input type="checkbox"/> Thursday 22 October "Rodgers & Hammerstein"	11 AM _____ 1.30 PM _____
<input type="checkbox"/> Thursday 19 November "Donald Cant"	11 AM _____ 1.30 PM _____
<input type="checkbox"/> Thursday 17 December "Christmas Spectacular"	11 AM _____ 1.30 PM _____

Name: _____

Address: _____

Amount: \$ _____

(cheques payable to "Magic Melodies")
Post to: Magic Melodies, PO Box 456, Bentleigh, 3204