

Volume 28 — April 1999

Glen Eira City Council corner Hawthorn & Glen Eira Roads, South Caulfield 3162
Phone: 9524 3333 Fax: 9523 0339 Email: mail@gleneira.vic.gov.au

New Mayor aims for teamwork, tradition and fun

Glen Eira City Council's new Mayor Cr Norman Kennedy will lead the municipality into the next millenium. Cr Kennedy was elected Mayor for 1999/2000 at a special Council meeting held last month, and is the first Glen Eira mayor to come from Mackie Ward.

Cr Kennedy told the gathering he hoped "this year will be noted for the way in which Councillors work together as a team and Council officers deliver the best services possible for residents, ratepayers, businesses and visitors to the city".

Cr Kennedy said his wife Nola and his sons Nicholas and David were an integral part of the team— "I couldn't do this without their wholehearted support". He also paid tribute to Glen Eira's first two mayors, Barry Neve and Alan Grossbard, and said Council "has achieved a lot in a short time".

"This is the final year of the first term of the new City of Glen Eira (elected Council), but we are also carrying on the tradition from the former City of Caulfield and City of Moorabbin." He acknowledged former mayors Geoff Patience, Emil Braun, Brian Rudzki, Jack Campbell, Doug Lee and Keith Duckmanton who were in the gallery. "I am humbled by your presence tonight and thanks for your support."

Cr Kennedy's four main aims for the year are to:

1. review communications and consultation policies to improve community input,
2. review advisory committees' structure for the best possible mix of Councillor, officer and community experience,
3. use the Mayor's casting vote to ensure best decisions are made for the community, and
4. have fun during his term, while serving Council and the community.

The meeting set the Councillor allowance at \$12,000 and the Mayoral allowance at \$36,000 with the use of a car— the same as last year's allowances.

Cr Kennedy, 48, lives in Murrumbeena. He works as Telstra's Litigation Support Group manager and is a professional communications engineer with experience in management, engineering and IT development. He is also a keen athlete, recently competing in a triathlon, and leading a team (including his sons) in the Anti-Cancer Council's Relay for Life fundraising event at Duncan MacKinnon Reserve track last month.



Glen Eira's new Mayor Cr Norman Kennedy (right) presents outgoing Mayor Cr Barry Neve with gifts from the City.

Inset: Glen Eira's "first family" the Kennedys: David, Norman, Nola and Nicholas.



Outgoing Mayor Cr Barry Neve said: "The year has had its up and downs, but I've enjoyed meeting so many people. It is a wonderful community and I've had fun. It has been an honor to be Mayor, and to be have been Mayor in two cities."

Cr Neve thanked his wife, the 1998/99 Mayoress Jane Neve, for her tireless work during the year. "I owe you a debt of gratitude." The Neves were presented with a citation for their services to the City of Glen Eira, as well as flowers and gifts.

Payment method to change from 1 May

From 1 May all Council accounts including rates, will be payable at Post Offices and Post Office Agencies.

All Council accounts will cease to be payable at any bank from 30 April. For further details see Page 3.

Inside

News

Suburb name changes	Page	2
Town Hall upgrade	Page	3
Disability ramp opening	Page	5

Features:

Drainage levy	Page	9-10
Doing Business	Page	4

Regulars:

Arts	Page	6-7
Community Diary	Page	8
Youth Page	Page	11
Recreation News	Page	12

Name changes approved— at last!

The State Government has finally given its approval to assigning boundaries to all suburbs within the City of Glen Eira. A notice officially assigning the names was published in the Government Gazette on 25 March—the boundaries take effect from that date.

The map on this page shows the boundaries approved by the Minister.

Residents should note that Australia Post is currently reviewing the impact of these changes on local postal addresses and will advise residents on any changes in due course. They ask that people continue to use their current postal address on all correspondence until further notice.

This decision on suburb boundaries completes a lengthy process undertaken by the State Government's Place Names Committee over the last two years to set clearly defined boundaries between suburb localities throughout Victoria.

This project was commenced at the request of the Australian Bureau of Statistics and emergency service organisations with the aim of giving certainty to suburbs localities which may not have been properly

defined or have "moved around" over time. In Glen Eira's case, there has not been a clear distinction between a number of our suburbs such as Carnegie, Murrumbeena, Ormond, McKinnon, Bentleigh, Glen Huntly and Gardenvale.

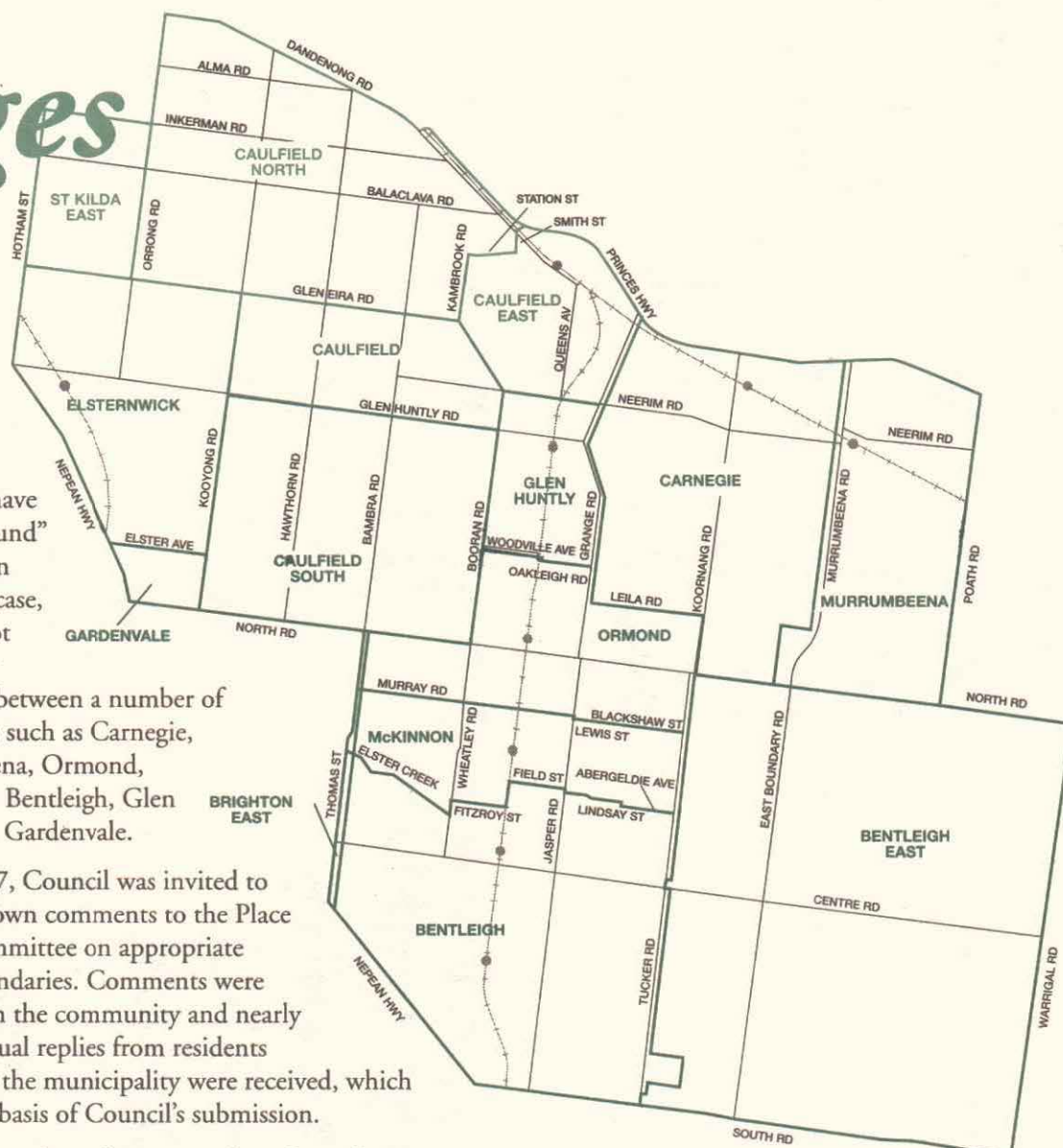
In mid 1997, Council was invited to provide its own comments to the Place Names Committee on appropriate suburb boundaries. Comments were invited from the community and nearly 800 individual replies from residents throughout the municipality were received, which formed the basis of Council's submission.

The final boundaries have a number of significant changes:

- The area between Patterson Road, Nepean Highway, South Road and Tucker Road has been changed from **Moorabbin** to **Bentleigh**;
- The boundary between **Gardenvale** and **Elsternwick** has been set at Elster Avenue;
- The area west of Warrigal Road known as **Oakleigh South** has been changed to **Bentleigh East**;

DISCLAIMER

The information in this publication is of a general nature. The articles contained herein are not intended to provide a complete discussion on each subject and/or issues canvassed. Glen Eira City Council does not accept any liability for any statements or any opinion, or for any errors or omissions contained herein.



- The area bounded by the Caulfield Racecourse, Neerim Road and Grange Road has been changed to **Caulfield East**.

School Holiday Programs

All school holiday programs in the City of Glen Eira include carefully planned activities catering for a wide range of interests, including: sports, craft, cooking and many other great activities, including excursions, to keep your children entertained during the school holidays.

Fees vary from program to program and most programs listed offer Child Care Assistance.

Bentleigh West Primary School,
23 Brewer Road, Bentleigh West*
Contact: Anne O'Brien on 9563 9161

Carnegie Primary School,
Truganini Road, Carnegie*
Contact: Yvonne Buckley on 9571 2662 or 015 529 987, 3pm–6pm

Caulfield North Primary School,
Balaclava Road, North Caulfield*
Contact: Helen Granek on 9509 6872

Shelford Anglican Girls College,
3 Hood Crescent, Caulfield*
Contact: Carol Anderson on 9528 5329

St Patricks Primary School,
3 Dalny Road, Murrumbeena*
Contact: Natasha and Gale on 9568 3397

Valkstone Primary School,
Valkstone Street, East Bentleigh*
Contact: School on 9570 3986

Yeshivah College,
92 Hotham Street, East St Kilda*
Contact: Mrs Bendet on 9522 8222

Murrumbeena Primary School,
Hobart Street, Murrumbeena
Contact: Fiona Finger on 9560 9275 or 0417 595 818 or during the holidays on 9568 1300

* Child Care Assistance available at these programs.

Councillor contacts

MACKIE WARD



Cr Norman Kennedy
Ph: 9524 3225 (Council)
Fax: 9564 8402
Mobile: 0419 379 540
Email: nkennedy@telstra.com.au

Cr Veronika Martens
Ph & Fax: 9579 7072 (H)
Ph: 9579 0297 (H)
Mobile: 0419 218 474



Cr Barry Neve
Ph: 9557 4090
Fax: 9563 9403 (AH)
Mobile: 0412 218 468

JASPER WARD

Cr Russell Longmuir
Ph: 9557 4438
Fax: 9557 8717



Cr Noel Erlich
Ph & Fax: 9533 0054 (H)
Mobile: 0412 218 485

ORRONG WARD

Cr Alan Grossbard
Ph & Fax: 9533 0052 (H)



GLEN EIRA CITY COUNCIL

PO Box 42 Caulfield South 3162 Phone: 9524 3333 Fax: 9523 0339
Email: mail@gleneira.vic.gov.au Internet: http://www.gleneira.vic.gov.au

Where did you get *that hat*?

Edith Pearlman (right) got into the spirit of Senior Citizens' Week with a party hat made by clown Chris Lavery. Edith was one of 230 people who enjoyed the lunch and entertainment at Harleston Park for Glen Eira's Picnic in the Park.

Magic Melodies singer Jennifer Lee (pictured below right) was among the entertainers who helped give people from nursing homes and hostels, who may have difficulty getting out and about, an opportunity to celebrate the week.

Sixteen senior citizens groups organised a range of events including open days, social dancing, picnics, afternoon teas and concerts. The celebrations were officially opened on Saturday 13 March by then Mayor Cr Barry Neve at a lively afternoon of activities organised by the East Bentleigh Senior Citizens Club.

University of the Third Age opened its doors with a range of activities to try; Eileen Terrill got some hands on experience with computers with tutor Bernie Pollett (pictured right).

This year's Senior Citizens Week celebrations were the opening event for International Year of Older Persons (IYOP). Council is planning a range of events throughout the year including Radio Daze which relives the radio shows of yesteryear, on 24 May.

For further information on IYOP contact Cheryl Kennedy on 9524 3356 or Lynne Howard on 9524 3230.



Senior citizens celebrate

A more "user friendly" Town Hall

Council has started work on upgrading the Glen Eira Town Hall to make it more accessible and useful to the community, by improving facilities and overcoming access constraints and security problems.

The first stage of work—on the theatre, auditorium and gallery—includes lighting and audio enhancements, and general refurbishment, which will make them state of the art venues and community facilities.

Works will soon begin on the revamped Glen Eira Service Centre, which will be relocated to the north-west side of the building, opposite the main car park. The new service centre will provide a 'one-stop shop' for all people visiting the complex and eliminate the confusing number of entrances and hallways people currently have to navigate.

The success of the Service Centre has prompted the need for better facilities. Established in July 1996, it now handles 80 per cent of all inquiries to the Council. Staff took more than 216,000 phone calls and counter inquiries in 1998, with most calls handled completely by the person who answers the phone or attends to the counter inquiry. The average

time for calls to be answered is seven seconds.

Council's Manager Corporate Assets Tim Frederico said the new service centre will operate as the public "face" of the building and the changes would ensure better access to the Town Hall's other facilities.

He said it will have five service points, including one disability access point, ensuring shorter queues at peak times. He also said the restructure would allow Council officers to come to the public, and result in a quicker response to inquiries.

Work is scheduled to commence in April 1999, with completion due in July.

After the Service Centre relocation, builders will move onto the old section of the town hall, to refurbish meeting rooms and the Council Chamber.

The two-year project includes a budget in 1998/99 for:

Auditorium	\$150,000
Theatrette	\$100,000
Service Centre and cashier relocation	\$250,000
Meeting rooms—preliminary works	\$100,000

Council accounts payment method to change

From May 1, 1999 Council accounts formerly payable at the National Australia Bank free of charge will be payable at **Post Offices and Post Office Agencies** free of charge. All Council accounts will cease to be payable at any bank from April 30.

This includes all Rate, Meals on Wheels, Day Care, Home Help, Home Maintenance, Respite, Hostels (Camden, Heathlands, Rosstown), Nursing Home (Spurway), Specific Care (Disability Care) and Community Bus Hire accounts.

Council accounts at present in circulation, ie dog and cat registrations, can be paid at any bank by the due date shown on the accounts. The National Australia Bank will not charge a transfer fee; however, banks

other than the National Australia Bank may charge a transfer fee.

The change improves services by:

- offering more places to pay, free of charge, a total of 26 outlets in the city, and
- ensuring residents won't be affected by bank branches closing.

Payments at Post Offices will also bring Council into line with other authorities whose accounts are payable at Post Offices which will also make the payment of Council accounts easier. Given Australia Post's nationwide network, Council accounts can be paid from any State or Territory by their due.

City of Glen Eira
Pride of Place

City of
**GLEN
EIRA**

Phoenix Precinct

Urban Design Framework

Council is seeking public comment in relation to the draft Phoenix Precinct Urban Design Framework (reported in last month's Glen Eira News) and its recommendations.

Council, in conjunction with Monash University and the Victoria Amateur Turf Club (VATC) has prepared a draft Urban Design Framework for the Phoenix Precinct.

The Phoenix Precinct encompasses the area around the Grandstand side of Caulfield Racecourse, Monash University Caulfield Campus, Derby Road shopping centre and Caulfield Plaza and residential areas in the vicinity.

The draft Framework examines a number of issues including traffic and car parking, pedestrian access, public transport, urban design guidelines, revitalisation of Derby Road and the development of buildings and housing. It proposes future directions for development within the Precinct.

The report and maps can be viewed at the Planning Department, Glen Eira Town Hall. Copies of the Executive Summary can be obtained by contacting Kelvin Walsh on 9524 3441.

Written submissions should be made by **Monday 19 April**, and addressed to:

Phoenix Precinct Urban Design Framework,
Strategic Planning
Glen Eira City Council, PO Box 42
Caulfield South, 3162
or faxed on: 9524.3432.



Doing Business



Mainstreet conference comes to Melbourne, 18-21 April

Glen Eira City Council in association with six other Council's, StreetLIFE and Community Business Centres of Victoria (CBCV) will sponsor the 3rd National Mainstreet Conference.

The conference, presented at Hilton on the Park, will provide a platform for small business operators from across Australia to hear and experience lessons from successful, small business proprietors who have identified and overcome the challenges of the last decade.

According to Industry Minister Mark Birrell: "Today, retailing is a tough business and the 1999 Mainstreet Conference will provide practical ideas and advice for a wide range of businesses."

The conference is a partnership between the State Government, Local Government and Community Business Centres of Victoria.

Over the four days delegates will hear about innovative and energetic efforts already occurring across Australia, New Zealand, the United Kingdom and the USA that are heralding the "rebirth" of the strip shopping centre. The Conference is a must for anyone who has an interest in the future of retail and the role of strip shopping centres.

Using keynote presentations to lay the groundwork, the conference will be strongly workshop-based with maximum opportunity for delegates to explore and develop ideas with experienced workshop leaders.

The conference will include field trips, panel discussions, strategic workshops, conference dinner, planning and strategy workshops, industry-hosted events, and trade displays.

Costs and registration

Full registration	\$395
Single day registration	\$180

Conference contacts

Bruce Robertson at StreetLIFE on 9655 6132 or Andrew Millen at Glen Eira City Council on 9524 3384. Visit the Conference web site: www.mainstreet.citysearch.com.au

Expo offers import opportunities

Glen Eira City Council, in association with about 10 other Councils, is organising an Import Replacement Expo and Trade Show for Wednesday 8 September. The Regional Area Consultative Committees, JobSouth and South East Development, are providing sponsorship and significant funding for this event.

The Expo and Trade Show will be held at Sandown Racecourse in Springvale and business operators and importers from all over the South Eastern Region are invited to participate. The major objective of the Expo is to identify import replacement opportunities for businesses, which are currently importing goods and components, and to make them aware of the benefits of replacing imports with products manufactured by local organisations.

The Trade Show component aims to assist businesses and manufacturers within the South Eastern Region, to promote the diversity of their

manufactured products and the broad range of business excellence, which abounds this region.

The Expo provides an excellent opportunity for companies with import replacement potential and other businesses to identify opportunities, which may increase growth and reduce costs. If you would like further information regarding the Expo and Trade Show '99, please contact Andrew Millen on 9524 3384

Anzac Day Service



The people of Glen Eira are invited to attend an Anzac Day Service at the War Memorial (north-west side) in Caulfield Park on Sunday 18 April, commencing 2.30pm. Following the service light refreshments will be served in the marquee located in Caulfield Park. Contact: 9524 3225.

Cat and dog registration due

Pet registration is now due. While the official deadline is 10 April, pet owners have until 26 April to pay renewal fees either through the National Australia Bank or at the Glen Eira town hall. If residents want to make alterations to registration details, or register a new pet, payment must be made at the town hall.



Printer Cartridges!

HEWLETT PACKARD, CANON, EPSON, SHARP, IBM....
NEW & RE MANUFACTURED

SAVE UP TO 50%

PH: 9563 6111
ADVANCED EDP SUPPLIES P/L
FREE DELIVERY!

Centre Road works in East Bentleigh

Major road reconstruction and surfacing works will commence from Monday 12 April in Centre Road, between East Boundary Road and Francesco Street, East Bentleigh. The works will take approximately six to eight weeks to complete.

Council contractors will undertake this work following South East Water's water main reconstruction works.

The road works are part of Council's 1998/1999 maintenance and reconstruction program. Prior to the commencement of Centre Road works, Council will notify those properties affected.

If you have any questions please contact Andrew Millen (Business Development Planner) on 9524 3384.

WEBSITE DESIGN

- Web Sites for Small Business
- Internet Birth Notices

Call us for more information or a brochure



Quintessential Sites

Telephone 9563 9996
info@quintessential.com.au
www.quintessential.com.au
PO Box 501,
Bentleigh 3204



How to Increase Your Sales by 30% in 60 Days

A Seminar presented by Wayne Berry
Australia's TOP GUN Sales Coach

You'll discover

- WHY traditional selling methods no longer work
- HOW to develop the Winning Edge to increase your sales
- HOW self image controls our performance in sales
- WHAT today's top Sales Achievers do that make them successful
- HOW you can increase your sales by up to 30% or more
- HOW to use seven proven steps to increase your sales

To book, contact adNet Australia on 1800 066 042

Tuesday 18th May 1999, 6:30pm - 9:30pm, City of Glen Eira

Compromise benefits all players

by Petrina Dakin

St Paul's Junior Football Club will be able to play all its matches at McKinnon Reserve, under a compromise put forward by Council for training and playing facilities for the winter football season.

Council has set up a committee of councillors (Mayor Cr Barry Neve and Cr Russell Longmuir), staff and representatives of the three football clubs which share McKinnon Reserve, to implement the compromise solution.

Elements of the proposed deal include St Paul's playing all its matches at McKinnon reserve, while junior sides will use Bentleigh Secondary College for training.

Council has also offered \$15,000 towards a light tower, in what would be a joint project with St Paul's Juniors, St Paul's Seniors and Old Haileyburians to provide training lights at McKinnon and Mackie Reserves.

St Paul's Junior Football Club had wanted to have all 12 teams play and train at McKinnon Reserve in 1999. However, the recently reconstructed main oval—worth nearly \$300,000—can only handle seven matches weekly until the ground matures. No training is possible for 12 months.

Then Mayor Cr Barry Neve said if the oval was used excessively this winter, the funds spent rebuilding it would be wasted.

"Our concerns were that we maximise the football playing opportunities of our local teams, and that the conditions of the grounds are able to be maintained to a safe playing standard. We have made special arrangements for 1999 to make sure all 18 teams across the three clubs are accommodated," he said.

In its ongoing improvements program, Council also recently completed drainage works, top dressed and reseeded McKinnon Reserve's Oval No. 2.

Council manages ovals across the municipality, and co-ordinates playing arrangements each year for nearly 3000 senior and junior footballers involved in matches, training and junior development.

Disability access ramp opens

People with disabilities will now be able to enjoy the function room facilities of the Glen Huntly Pavilion with the opening of a \$100,000 disability access ramp to the pavilion's first floor last month.

The project, which includes a disabled toilet on the first floor, is the first major capital works undertaken as part of Council's Disability Action Plan to provide access to all Council-run facilities.

Council's Disability Adviser Sharon Granek said: "I'm very pleased to see that the first stage of making Glen Eira a more user-friendly place is underway. This ramp represents the first of many structural changes.

"Some people may think, it's only a ramp so why all the fuss? But, have you ever tried to negotiate steps while carrying heavy boxes or tried to get a child in a stroller up a flight of stairs? It can be a big deal. The ramp will provide an alternative route to reach the first floor without having to feel like Mt Everest has just been tackled! Or worse still, not even bothering to come because you can't climb the stairs without assistance.



Treasurer of the Physical Disability Council of Victoria Harold Hartfield (left) oversees the opening of the Glen Huntly Pavilion disability access ramp by then Mayor Cr Barry Neve.

"The completion of this ramp signifies the right to participate and the right to choose. No longer will someone with a disability have to ask for assistance just to get inside this building. They can now choose whether they want to attend a function held here or not. They can watch the game of footy or cricket with their friends in comfort. They can choose when to arrive and when to leave. This ramp represents independence. Now that the ramp is here, I encourage everyone to take full advantage of this facility," Ms Granek said.

We need help!

You can help our local community by becoming a Social Support Volunteer.

- ▲ Transport assistance
- ▲ Social visiting
- ▲ Shopping and outings
- ▲ Use your valuable life skills to establish a friendship with a frail elderly person or a person with a disability.

Volunteers will need a car to help with shopping, transport to appointments or friendly visiting. A couple of hours a week is all that's required. To find out more about this program, contact the Social Support Coordinator at Community Information Glen Eira, 256 Hawthorn Road, Caulfield on 9524 3314 or 9524 3200.

Immunisation dates for April and May

Wednesday 7 April 9.30am–10.30am

Glen Eira Town Hall, corner Hawthorn and Glen Eira Roads Caulfield South, 1st floor, Auditorium

Saturday 10 April 9.30am–10.30am

East Bentleigh Community Health Centre, Gardners Road, East Bentleigh

Monday 12 April 1.30pm–2.30pm*

Bentleigh Baptist Church 9 Vickery Street Bentleigh

Tuesday 13 April 6pm–7.30pm

Glen Eira Town Hall, corner Hawthorn and Glen Eira Roads Caulfield South, 1st floor, Auditorium

Tuesday 20 April 9.30am–10.30am

East Bentleigh Community Health Centre

Monday 26 April 9.30am–10.30am

Murrumbeena Baptist Church, 44 Murrumbeena Road, Murrumbeena

Wednesday 28 April 9.30am–10.30am

Glen Huntly M&CH, corner Royal and Rosedale Avenues, Glen Huntly

Monday 3 May 1.30pm–2.30pm

Bentleigh Baptist Church 9 Vickery Street Bentleigh

Wednesday 5 May 9.30am–10.30am

Glen Eira Town Hall, corner Hawthorn and Glen Eira Roads Caulfield South, 1st floor, Auditorium

* this session has moved because of Easter.



Glen Eira Food Services

Volunteers needed urgently

Food Services need volunteer drivers and jockeys, to help deliver Meals on Wheels seven days per week. If you are able to provide assistance or would like further information, please contact our Volunteer Co-ordinator on 9563 6611 from Monday to Friday 9.30am–1.30pm.

The Meals on Wheels Service operates from the Glen Eira Food Services office located at

15 Truganini Road, Carnegie.

Autumn savings on frozen meals

Don't forget our Autumn Special on frozen meals:

Buy five Main Meals and get one Main Meal and one Dessert Free.

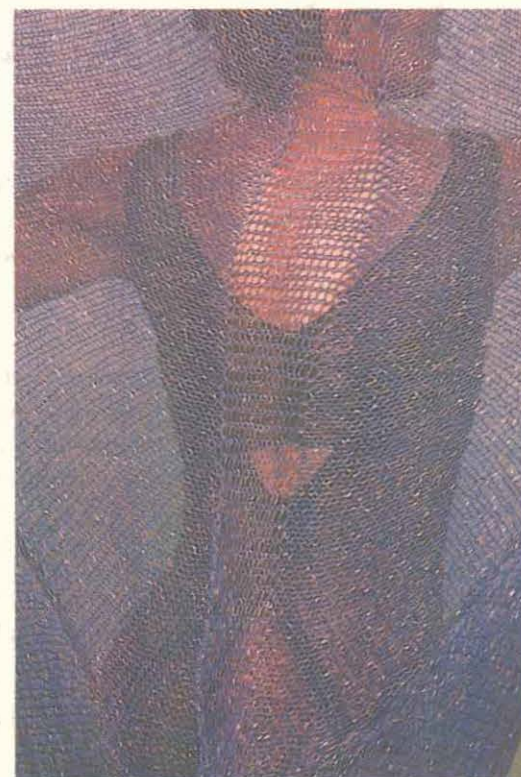
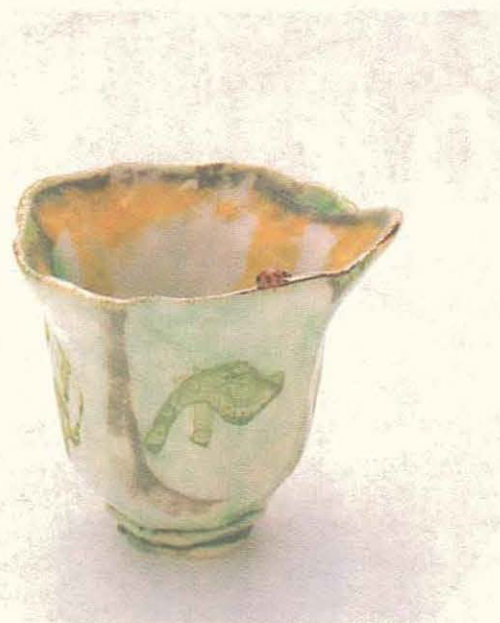
Cost: \$4.50 Main Meal and Dessert
\$4 Main Meal.

Ordering is easy! Telephone: (03) 9563 6611 or fax: (03) 9569 2223 to place your order. Monday-Friday 9am–4pm.

Meals on Wheels service

The Glen Eira Meals on Wheels Service is available for everyone. If you would like more information about our service, telephone (03) 9524 3220 for a brochure.

ARTS *Arts*



Australian Craft and Design Showcase

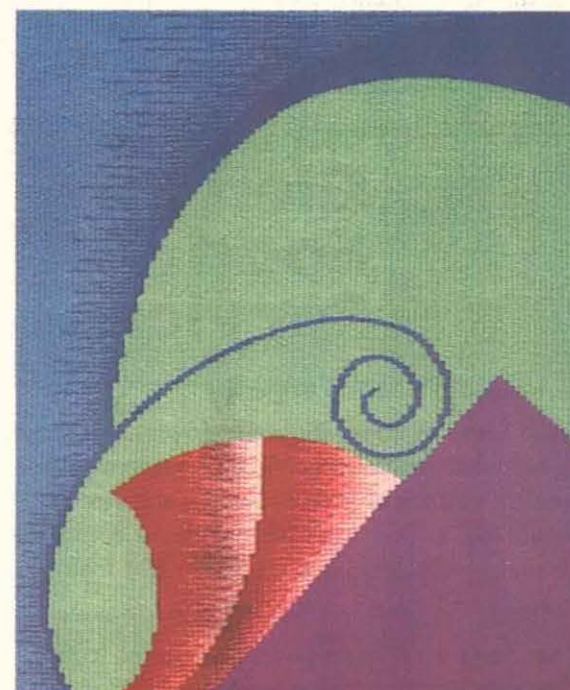
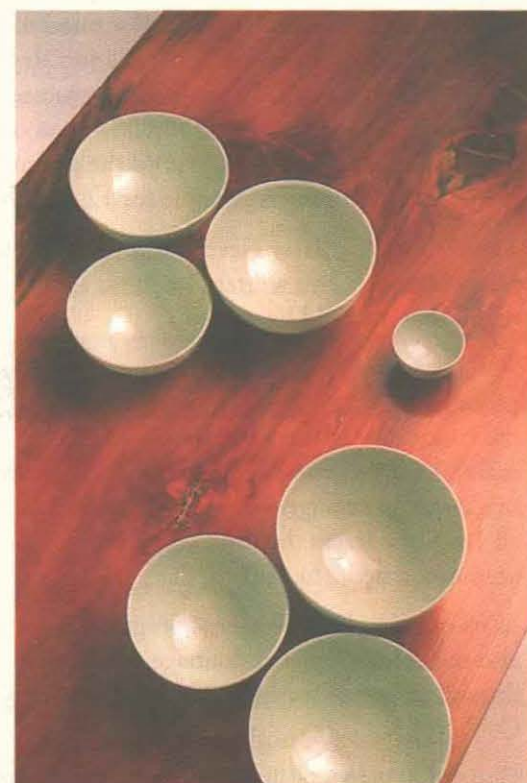
8 to 25 April

Official Opening
Wednesday 7 April at 6pm.

❖ ceramics ❖ tapestries ❖
❖ textiles ❖ furniture ❖
❖ jewellery ❖

The Glen Eira City Gallery proudly presents the second annual Australian Craft and Design Showcase featuring the work of eight well known and respected artists.

The Showcase is a platform for the sale and promotion of the very best in contemporary craft and design. This year's exhibition features beautiful fabrics, sarongs and cushions by Vixen Australia; restrained and dynamic office and domestic furniture by Join; the Japanese inspired ceramics of Phil Elson; David Ray's decorative baroque style ceramics; contemporary tapestries by Sara Lindsay; the knitted dresses, sweaters, hats and bags of Zlatka Viola Sirakova; striking jewellery by Stephen Gallagher; and Tim Gresham's strong geometric tapestries.



Taking time to take tea

As part of the Ogaki Glen Eira Japanese Festival demonstrations of the cha-no-yu (tea ceremony) by Yoshiko Usui have been providing insights into an ancient tradition—and the opportunity for some “quiet time”.

The Japanese tea ceremony is not so much about drinking tea—it provides a moment of relaxation and an opportunity to achieve inner calm.

Tea was introduced to Japan from China and the tea ceremony was perfected by Master Sen-no-Rikyu, based on the spirit of Zen, in the 16th century. It is used to welcome special guests and friends, to honour new acquaintances, and to provide a special time for families to come together away from the demands of their busy lives.

Participants are invited to sit while Yoshiko Usui prepares to begin the ceremony. She bows low and says: “Please relax”. Her movements are slow and precise, each step in the process smoothly flowing into the next. Form and grace are an important aspect of the ceremony.

Yoshiko wipes and arranges the various implements with a silk napkin; the chasaji (bamboo spoon), the chasen (bamboo whisk), the chaki (tea container) and the hishaku (bamboo water scoop), then washes and dries the chawan (tea cup).

Next she spoons the brightly coloured matcha (green tea powder) into the cup and scoops hot water in from the kama (kettle). The mixture is whisked and, when ready, the cup is raised and turned twice to be passed to the waiting guest. The guest receiving the tea also turns the cup twice to drink from the correct side and once the tea has been consumed, turns the cup back; wiping the edge which has touched the lips with the right hand.

Yoshiko explains the significance of sharing the tea ceremony with someone: “We can never experience this moment again, once passed it has gone. Perhaps we will see each other again, but not in this moment. So we must enjoy this time together.”

Next month's Glen Eira News will feature stories and photos of the Ogaki Glen Eira Japanese Festival.



Classic Virtuosi Series II presents

Australian Classical Players Saturday, 15 May at 8pm

Presents an evening of Albinoni Adagio for strings

- | | |
|---------|--|
| Vivaldi | Concerto for Oboe and Bassoon
RV 545 Op. 42 No.3
<i>Hannah Cooper, oboe</i>
<i>Elizabeth McGrath, bassoon</i> |
| Grieg | Holberg Suite |
| Bach | Concerto for two violins
BMV 1043 in D minor
<i>George Vi and</i>
<i>Dominique Gallery, violins</i> |
| Vivaldi | Concerto for flute
RV428 Op. 10 No.3
<i>Megan Kenny, flute</i> |
| Elgar | String Serenade |

Formed in early 1998, the Australian Classical Players are professional, amateur and student musicians and the resident orchestra of MLC Music Academy in Kew. Concerts have included Rimsky-Korsakov's Scheherazade, Dvorak's Cello Concerto and Symphony No.8, and a program of music by Leonard Bernstein and George Gershwin. The orchestra is lead by conductors Peter Marks and Ivan Ungar.

Ticket prices
\$28 adults \$22
concession.
Bookings phone
9524 3287.



Upcoming events



Music

Sunday Arvo with Vince Jones
Sunday, 30 May 2.30pm in the
Auditorium. Tickets: \$25

Theatre

Second play of the Views of
World War II Theatre and Music
Season in the Theatre

Placed on Hold

By Joy Dettman
Friday 14, Saturday 15 May at
8pm and
Sunday 16 May at 2.30pm

Starring John Flaus and Brenda
Palmer. Directed by Susan
Pilbeam. Music by Dorothy Baker,
Bob Horsfall and Helen Jowsey.

Tickets: \$18/15

**For further information contact
Rosanna Verde on 9524 3287.**

After School Art

▲ Ceramics ▲ Drawing
▲ Multi-media



A lively new program for budding artists and students interested in the visual arts will be presented at Oak Tree House in Term 2.

After School Art will offer classes in ceramics, drawing or multi-media on weekdays specially scheduled so students can attend after school.

Practising artists and teachers will conduct the classes with an emphasis on developing each student's potential and with the aim of equipping students with the skills particular to each art form in an enjoyable and friendly atmosphere.

An occasional feature of the program will be the opportunity to view selected exhibitions at Glen Eira City Art Gallery as a stimulus to that week's class.

For more information and a booking form please ring the Arts Programmers on 9524 3402.

Education Programs

Education programs for primary, secondary and tertiary students accompany a number of exhibitions in the Glen Eira City Gallery this year. Three exhibitions in particular: Herbert Kruckman: 5–31 July; Cartograph 25 July–8 August and Jon Campbell's Greatest Hits 9–29 August, will all involve associated Education programs.

The programs will provide opportunities for students to meet the exhibition curator, the exhibiting artists and participate in guided exhibition tours, discussions and workshops.

Of particular interest to VCE Art and Studio Arts students will be the opportunity to discuss conservation procedures, exhibition planning and presentation and issues in contemporary arts practice with the exhibition curator.

Many exhibitions presenting a range of art forms will be exhibited in the Gallery in 1999 including Aboriginal art, photography, children's art and painting. Teachers can contact the Gallery to arrange visits focussing on these exhibitions which can include guided exhibition tours with appropriate Gallery staff.

Mailing list

The Arts Complex has a wide range of information available. Please indicate which area is of interest to you and we will include you on our mailing list(s). Feel free to tick all boxes if desired.

- Exhibitions ☐ Special events ☐ Seminars ☐
Classes/workshops ☐ Arts & (newsletter) ☐
Concerts/music performances ☐

Name: _____

Address: _____

Postcode: _____

Send to: Rosanna Verde, Arts Liaison Officer,
Glen Eira Arts Complex, PO Box 42, Caulfield 3162.
Facsimile: 9524 3399

or email: rverde@gleneira.vic.gov.au

Website: www.citysearch.com.au/mel/gleneiraarts

COMMUNITY *Diary*

Events and activities

Charity Concert Strike a Chord against Cancer Saturday 24 April at 8pm in the Glen Eira Town Hall, Caulfield. Cost: \$12 prepaid (or \$15 on the night). Full time student: \$8 (or \$10 on night). Light supper available. Contact: 9578 0160 Fax: 9578 2413.

Australian Racing Museum exhibition of works by colonial painter Frederick Woodhouse until 10 June at the Museum, Gate 22, Caulfield Racecourse, Station Street Caulfield East. Admission FREE. Contact: 9257 7279.

Jacaranda Theatre presents *A Month of Sundays*, at Glen Eira Arts Complex Theatre, corner Glen Eira and Hawthorn Roads, Caulfield. Dates: 16-17 and 21-24 April at 8pm. Cost: \$15 adults, \$12 concession and groups of 10. Matinee: Saturday, 17 April at 2pm, all tickets \$8. Bookings: Cathie or Colin 9546 2237.

Mothers' Day Expos at Coatesville Uniting Church, corner North and Mackie Roads, East Bentleigh. Saturday, 10 April, 2pm-5pm. Range of gifts. Afternoon tea. Free prizes. Contact: 9563 8019.

Music Lovers Society will hold an Ida Doubleday Bequest Recital at the Glen Eira Arts Complex, Auditorium, on Saturday 8 May at 8pm. Piano performance by Ross Calia. Contact: 9571 0850 or 9822 7292.

Meetings & clubs

Ormond Auxiliary for Alfred Hospital needs new members to raise money for equipment. Meetings held in Baptist Church Hall, corner Lillimuir Road and Walsh Street, Ormond, fourth Monday of each month at 10.30am. Contact: Eveline Moir 9578 1721.

Bentleigh Life Activities Club: opportunities to meet new friends and enjoy a wide range of social activities. Contact: 9580 2461.

Glen Eira Cheltenham Art Group New members welcome. Classes in all media, demonstrations, workshops, and more. Term 2 classes begin 19 April. Enrolment Day: Saturday 10 April, 10.30am-2.30pm. Room 32 Robert Flavell Wing, Moorleigh Village, 92 Bignell Road, East Bentleigh. Contact: Clubroom 9563 7621 or Secretary 9570 3596.

Glen Eira Neighbourhood Support Program For information on our Father's Group, Chinese Mothers' Group, Young Mothers' Group and Solo Mothers' Group, contact Judy White or Maureen Carolan at Council's Maternal and Child Health Service 9524 3403.

Southern Music Club meets monthly at Bentleigh Senior Citizens Centre, 2 Arthur Street, Bentleigh. International guests appearing regularly. Contact: Will Rainer 9544 6394.

Bentleigh Organ Club invites residents to meet at East Bentleigh Hall, 675 Centre Road, East Bentleigh. First Monday of the month, from 8pm. Contact: Cliff and Jenny Restarick 9528 2539.

Caulfield Toddlers Playgroup has vacancies in most groups. Also has German speaking playgroup. Morning and afternoon sessions available. Contact: Vickie 9527 1769.

Health and wellbeing

Arthritis— East Bentleigh Self Help Group (Arthritis Foundation of Victoria) meets first Tuesday of the month at East Bentleigh Community Health Centre Gardeners Road, at 10.15am. All Welcome. Contact: 9557 4863.

The Well Women's Clinic operates every Thursday 3.30-5.30pm. Female doctor available. Range of women's health issues. Appointments: East Bentleigh Community Health Centre 9579 2333.

Volunteers and services

The Jewish National Library has books in Yiddish and English and many other languages available for loan, plus large range of reference materials. Hours: Wednesday 10am-2pm.

Volunteers needed Glen Eira Area Aged Care facility, Hurlingham Day Centre, operates five days a week in Glen Eira, Bayside and Kingston. If you enjoy listening, playing music, walking or could help with transport you would be warmly welcome. Contact: Sandra 9596 2227.

Glen Eira Community Recycling Centre located in Neerim Road, Glen Huntly (opposite Caulfield Racecourse) is now paying 40 cents per kilo for aluminum cans. Open Sundays 10am-2pm. Recycles products on behalf of schools, community groups and not-for-profit organisations. Managed by Caulfield Rotary Club. All proceeds to local youth projects. Contact: 9568 7190.

Courses

Birthwise— birth/labour and early parenting course runs April-November. Guest speakers. First session 19 April, 6-8.30pm at East Bentleigh Community Health Centre, Gardeners Road, East Bentleigh or Monash Link Community Health Service, corner Neerim and Poath Roads, Hughesdale. Cost: \$50 (with support person), or \$35 (without). Contact: 9579 2333.

Rotary Club of Caulfield will conduct *Our Own Health and Well-being* program (aimed at women 50 plus) in support of the IYOP. 10-week program 20 April to 22 June at South Caulfield Community Centre, corner Kooyong Road and Jupiter Street, South Caulfield, Tuesdays 10am-12.45pm. Cost: \$2 per session. Contact: Heather Aldred 9568 7190.

Support for children's hospital



Caulfield Auxiliary of the Royal Children's Hospital recently presented a bequest of \$72,000 from the estate of long standing member Olive Coulson, to the hospital.

Olive and her sister Sylvia joined the Auxiliary in the 1970's, and were involved both as active members and through baking and fund-raising support for many years.

Formed in 1932, the Auxiliary has raised funds through a variety of means and individual memberships have spanned more than 40 years.

The committee is pictured here (left to right) co-ordinator Sally Watson, vice president Pat Piper, president Jean Patience, secretary Olive Swift and treasurer Barbara Mitchell.

The Auxiliary welcomes new members to its meetings held on the third Wednesday monthly from February to November and will hold a card luncheon on Monday 31 May. Contact: 9528 6616 or 9578 2395.

JUDO

YAMADA JUDO ACADEMY
Caulfield Recreation Centre
6 Maple St, Caulfield South
9578 4460

Self defence, Concentration, Discipline, Co-ordination, Self-esteem, Enjoyment, Stress Release

BEGINNERS TO BLACK BELT – From 4 years old

U3A BUS TOURS

19 May, 9am-5pm

THE SPHINX ENTERTAINMENT CENTRE, GEELONG
Join us on this fun day! Morning tea in the Gaming Room— time to play the Pokies. 3 course lunch.
Afternoon tea and non-stop entertainment.

14 July, 10am-4.30pm

Popular CHRISTMAS-IN-JULY outing to the CUCKOO RESTAURANT will offer unlimited smorgasbord includes CHRISTMAS fair. Great entertainment by the BLACK FOREST BAND.

18 August, 9am-5pm

Bus trip to DAYLESFORD and its renowned CONVENT ART GALLERY. Opportunity to visit this outstanding tourist region.

ENQUIRIES: 9572 0571 or (A/H) 9523 7862

BLADDER PROBLEM?

- Leakage, poor control, frequency, urgency
- Persistent bed wetting
- Decreased sexual fulfilment due to weak pelvic floor muscles?

Advanced neuro-muscular stimulation strengthens pelvic floor muscles and settles bladders. High success rate with a discreet home-based treatment that you control. No drugs involved. Consulting East Bentleigh and Berwick.

Sister Dorothy Stevens
Control Health Services
Phone: 9563 8299

Member of Continence Foundation and Royal College of Nursing Australia.

Glen Huntly Friendship Group

ACTIVITIES FOR APRIL/MAY

22 April: Bus trip to New Gisborne and Macedon. Visit Barringo Wildlife Park and Macedon Gardens. Lunch and entrance fees included. Cost: \$32 Departs 9am, 99 Grange Road, Glen Huntly 9.15am from 185 Poath Road, Hughesdale.

4, 5 & 6 May: Trip to Bright 3 days and 2 nights.
Mt Beauty, Bogong Village, Falls Creek
— the rooftop of Victoria.

Dinner, Bed and Breakfast at Bogong View Motel.
Lunches not included

Cost: \$200, deposit of \$50 by 16 April and balance by 27 April.
Please note early departure: 8.30am from 99 Grange Road, Glen Huntly and 8.45am from 185 Poath Road, Hughesdale.

Bookings: Margaret 9596 6124

Heritage plan submissions heard

Only nine property owners out of 70 individually listed properties have made submissions on Glen Eira's proposed heritage amendment.

Glen Eira City Council has received a total of 68 submissions to the proposed Heritage Amendment L33, which was on public display late last year.

Three of 17 proposed heritage areas have generated the most submissions: Bailey Avenue/Myrtle Street, Caulfield; Vadhre Avenue and Lempriere Avenue, North Caulfield.

The great majority of proposed areas had no objections, including the larger areas of Beauville Estate, Caulfield North, Crompton Court, Gladstone, Glen Huntly Park, Hillcrest Estate and Park Crescent, as well as a large number of the proposed individual properties.

In Council's ongoing community consultation, submitters were able to speak to their written submissions at planning conferences held over the last few weeks.

Then Mayor Cr Barry Neve said the planning conferences provided a constructive opportunity for Councillors to hear the concerns and also the support of residents affected by the proposed heritage amendment.

"The conferences were part of Council's commitment to involve the community. Throughout this whole process, Council has tried to ensure people have the opportunity to present their views."

He said the plan aims to achieve a balance between development and the conservation of buildings and areas identified as having architectural, cultural and historic significance, which will enhance the overall character of the Glen Eira municipality.

Submission results:

- There are 87 Heritage Overlay areas comprised of 17 heritage areas and 70 individual properties.
- A total of 4700 property owners and occupiers were formally notified of the proposal.
- There have been 67 submissions received. This represents a very small percentage of people notified— only 1.4 per cent.
- Of the submissions, 64 object to the amendment, 2 generally support the amendment and 2 support heritage controls and seek to including additional properties and areas.
- Submissions relate to 10 of the proposed heritage overlay areas and 12 individual sites.
- Of 70 individually listed sites, 12 submissions were received, including 9 from property owners. Three other submissions, from the Public Transport Corporation, United Energy and VicRoads have asked for clarification of details.
- Seven proposed areas and 58 individuals sites have no objections.

Council will consider the submissions and planning conference presentations at its meeting in April, and decide whether to proceed with the amendment unaltered, to alter the amendment and proceed or to abandon the amendment.

If proceeding, Council would request the Minister for Planning to appoint an independent panel to hear submissions.

Amendment means levy for drainage

By Fiona Johnstone, Strategic Planning

To support upgrades to the city's drainage system, Council hopes to introduce a Drainage Contribution Levy into its Planning Scheme.

This levy will affect all new developments requiring a planning permit (with the exception of single dwellings), ie building units or extending a shop. However, the levy will not be used to fund backlog infrastructure repairs.

Not all residents will be affected by this amendment— uses not requiring a planning permit will not incur a fee.

Council is able to introduce this Drainage Contribution Levy through the State Government's introduction of the Planning and Environment (Development Contributions) Act in 1995. This Act introduced a system which enables local councils to levy "development contributions". Currently in Glen Eira there are no development contributions for drainage.

A detailed study, carried out by Sinclair Knight Mertz, of the condition of Council's drains was commissioned by Council in 1996. It found that the majority of flooding in Glen Eira is due to the inadequacies of the current drainage system which was mostly laid in the 1960s. The report presents a 10-year improvement plan for drainage works throughout the city to bring the system up to modern day standards.

A further study, by Spiller Gibbins Swan in 1998, uses SKM's report to identify the location of drainage works required in each Development Area (drainage catchment). It also outlines the projected timing and likely cost of these works and calculates the proportion attributable to new development.

The rate of the levy varies depending on the identified drainage improvements required in the catchment area and the projected development levels.

The required drainage works will service both existing and new development. However, the levy rate reflects only the new development's share of the future demand on each catchment's drainage system. Monies collected will be a small proportion of the total cost of drainage works required in any Development Area.

The individual levy for a given application is based on the area of additional impervious surface (ie concrete, paving and the building area) proposed in relation to the existing property.

The rates will increase with inflation (CPI) every financial year and an administrative fee of \$40 will also apply.

A map of the city, showing the catchment areas and rates, is published on the next page. For information regarding the amendment or catchment area details contact the Service Centre on 9524 3333.

Drains, rains and autumn leaves

by Kerry Martin, Assets Manager

Autumn has arrived and winter's not far away—that means fallen leaves, more rain and possible drainage problems.

It is time to check and clean your roof gutters, downpipes and drains. Your stormwater drainage pipes are your responsibility including the section from your property boundary to where the drain connects to Council's drain or the street kerbline.

Council sweeps the streets on a monthly cycle with additional sweeping in areas of heavy leaf fall during autumn. Cleaning of drains and pits is done partly on a regular cycle in known problem areas and partly in response to specific requests from residents.

While Council has a major role in keeping the drains clean, residents also have a part to play. Here are a few things you can do to help:

- Check and clean your gutters, downpipes and drains regularly.
- In heavy rain quite a lot of pits will block due to leaves and rubbish in the street washing onto the pit grate. Often they can be cleared, simply by dragging the rubbish off the grate with a rake.
- While at the shops or the park please put your litter in the bin.
- Compost your leaves and lawn clippings and use the mulch on your garden. Don't sweep them into drainage pits where they will either block the drains or end up polluting the bay.



- A lot of Council drains are in easements on properties. Any pit lids should be kept clear of obstructions. Barbecues are great fun but please, don't build yours on top of the drainage pit in your back yard. It makes it very difficult for Council staff to clean the drains.
- Before you plant any trees or shrubs check with your nursery. Some plants have intrusive root systems that will get into drains and cause blockages.
- Report any flooding or damaged pits to our Customer Service Centre on 9524 3333.

Drainage Catchment Areas

The nine drainage catchment areas in Glen Eira and their applicable rates are:

Drainage Catchment Area (Development Area)	Development Contribution Rate (Rate of Levy) — per additional square metre of impervious area
Elsternwick (ELS)	\$0.21
Moorabbin (MOO)	\$1.95
Byron Street (BYR)	\$0.10
Elster Creek (ECK)	\$0.46
Bentleigh (BEN)	\$1.96
Murrumbeena (Mur)	\$0.54
Grange Road (GRA)	\$1.04
Heatherton (HEA)	\$1.07
Shakespeare Grove (SHA)	\$0.63

What are Development Contributions?

Development Contributions are payments by developers, to partly or wholly fund additional or upgraded infrastructure which is needed when development or redevelopment occurs. Payment is to be in cash, although Council may consider accepting works in kind in lieu of cash contributions.

What is a Development Contributions Plan?

A Development Contributions Plan (DCP) defines an area from which Council can seek a contribution for the provision of local infrastructure. It identifies the infrastructure required directly as a result of development, accurately costs this infrastructure, and identifies how these costs are to be shared between individual developments within the Plan area.

The Act requires that where development contributions are to be requested (other than through an agreement under section 173 of the Act), a Development Contributions Plan must be incorporated into the municipal planning scheme—that is, it becomes part of the planning scheme.

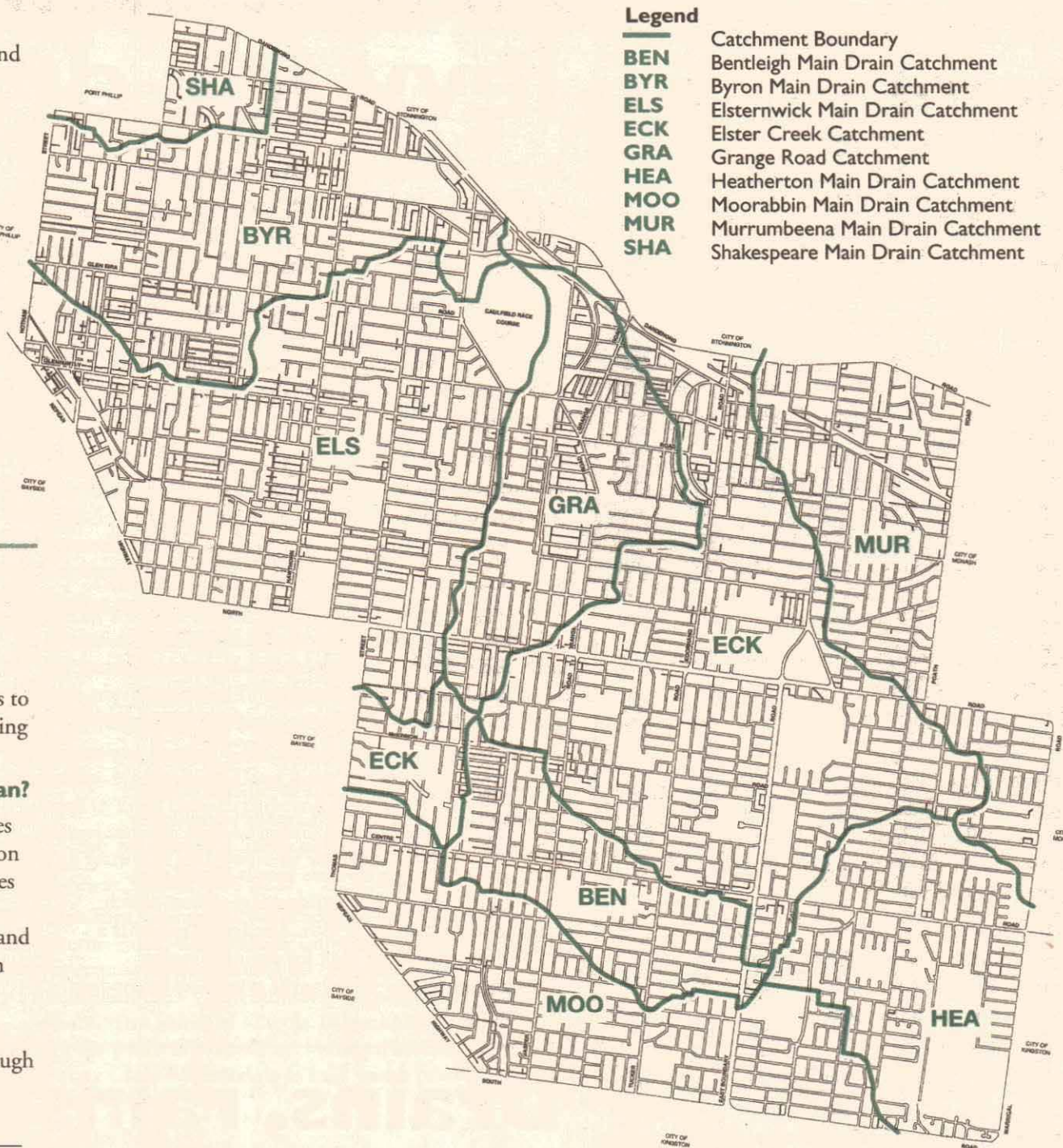
Contents of the Development Contributions Plan— Drainage

The Development Contributions Plan:

- describes the area covered by the Development Contributions Plan and within this, the nine drainage Development Areas with the rate of levy payable;
- describes the anticipated development which will and will not contribute to drainage infrastructure enhancement;
- describes the method by which drainage development contributions are to be calculated, and details the amounts payable;
- describes the methods by which drainage development contributions are to be collected and spent;
- describes the nature and location of drainage infrastructure to be provided, and its timing and cost; and
- details the proportion of drainage infrastructure upgrading costs which is attributable to new development and which is sought to be recovered by the Development Contributions Plan.

Strategic and Policy Justification of the Amendment

The Amendment has been prepared in accordance with the relevant provisions of the Planning and Environment Act and is consistent with the Ministerial Guidelines for Development Contributions December 1995.



City of Glen Eira Planning and Environment Act 1987 Notice of Amendment to a Planning Scheme Glen Eira Planning Scheme Amendment No. L35

Glen Eira City Council has prepared Amendment L35 to the Glen Eira Planning Scheme.

The Amendment changes the Local Section of the Glen Eira Planning Scheme.

The Amendment affects all land within the municipal boundaries of the City of Glen Eira.

The Amendment proposes to incorporate a Development Contributions Plan and Development Contributions Plan Overlay into the Glen Eira Planning Scheme. The amendment will require all new development for which a planning permit is required, to contribute towards the upgrading of drainage infrastructure through a drainage development contribution.

The Development Contributions Plan:

- describes the area covered by the Development Contributions Plan and within this, the nine drainage Development Areas with the rate of levy payable;
- describes the anticipated development which will and will not contribute to drainage infrastructure enhancement;
- describes the method by which drainage development contributions are to be calculated, and details the amounts payable;
- describes the methods by which drainage development contributions are to be collected and spent;

- describes the nature and location of drainage infrastructure to be provided, and its timing and cost; and
- details the proportion of drainage infrastructure upgrading costs which is attributable to new development and which is sought to be recovered by the Development Contributions Plan.

The Amendment can be inspected free of charge and during office hours at:

City of Glen Eira
Planning Department,
City of Glen Eira Municipal Offices,
corner Glen Eira and Hawthorn roads,
CAULFIELD 3162.

Department of Infrastructure
Customer Service Centre
Upper Plaza, Nauru House,
80 Collins Street
MELBOURNE 3000

Submissions about the amendment must be sent to:

Fiona Johnstone
Town Planning Office
City of Glen Eira
PO Box 42
Caulfield South 3162

by Monday 10 May, 1999

Glen Eira

Youth Page



As reported in the February edition of the Glen Eira News, the Why? Stop Youth Information Centre in Rosstown Rd, Carnegie has undergone some changes in 1999. An extension of hours means that young people in Glen Eira now have access to Youth Work support six days a week.

Just a reminder that Annie and Emely are available Monday to Friday, 12pm to 6pm and Saturday from 10am to 2pm.

But wait... there's more. No, not a set of steak knives! We now have specialist services based at the Why? Stop Youth Information Centre. Stay focussed and we'll tell you about them.



Olivia Tims

Taskforce Community Agency Inc

This is a free drug and alcohol counselling service for young people up to 21 years of age. Olivia Tims a Youth Worker with

Taskforce, is available each Monday and Thursday to provide assessment, case management, crisis intervention, counselling, advocacy and supported referrals to young people faced with drug and alcohol problems. Olivia takes a holistic view when working with young people and insists on seeing drug and alcohol use issues in the context of the individual's overall life situation. So, if you are a young person who is experiencing some problems with one substance or another, feel free to contact Olivia via the Why? Stop. If you would like to make an appointment or if you have any queries, please call us on 9572 5389.

Barb & Michael (JPET)



Job Placement Employment and Training (JPET)

This program helps disadvantaged young people on many levels. Barb and Michael (pictured below) are available each Thursday from the Why? Stop to offer assistance in finding a job or suitable training opportunities. If you need help working out problems which might be stopping you from finding a place to live or getting a job, or if you are wanting to stay at or return to school, Barb and Michael offer a fantastic support service to young people who fit the criteria for the program. So if you think it's time to organise this area of your life, call for an appointment on 9572 5389.

YFC Southern Youth Services

This service assists young people who are experiencing family conflict. You can come and meet Belinda, a Family Reconciliation Worker, each Tuesday at the Why? Stop. Belinda



Belinda

works with young people (15-21 years) and their families to assist young people who have left home but wish to re-establish positive links with their family. You can make an appointment to see Belinda by calling 9572 5389. The service also provides support to parents of teenagers.

Just like the existing Youth Support and Referral Services offered by Annie Rowland and Emely Saad at the Why? Stop, these specialist services are confidential and free to all young people and their families. All of this adds up to a comprehensive resource for young people in the City of Glen Eira.

Contact us!

Daniel Piekarski -
email: pike@netspace.net.au
Judith Bruce - Glen Eira Youth Services
Phone: 9524 3283 Fax: 9523 0339
Post: Glen Eira Youth Services
PO Box 42, Caulfield South 3162
email: jbruce@gleneira.vic.gov.au

LIBRARY News

Net news

During April the following Internet classes will be offered at Caulfield Library:

- Introductory classes— for people with little or no experience in using the Internet.
- A one hour email class— using free web-based services to establish your own email account.
- Children's School Holiday class— learn what fun you can have using the Internet.
- and for the first time a Genealogy class— discover how the Internet can assist with your family research.

Bookings essential. Phone Belinda on 9532 9466 for class times and details.

Take a tip

Saturday 10 April, 2pm at Bentleigh Library*

Thinking of leaving?

Head down to the library for a lively presentation full of useful and practical travel tips and advice.

Wednesday 14 April, 2pm at Elsternwick Library*

Don't be afraid, be informed

Don't miss this invaluable session with Snr. Constable Michaelson on personal and property crime prevention.

Wednesday 14 April, 7.30pm at Caulfield Library*

Meet the author: Lisa Buchner

Lisa Buchner, local author of the recently released "Create a Masterpiece" discusses what is involved in writing a book.

**Tickets at any branch or at the door:
\$3 members and \$5 non-members*

April Antics — School Holiday Program

Sessions with professional entertainers for:

- Pre-school children up to 5 years (P); Primary school children 5 years and older (S); with family shows for everyone (F)
- Tickets \$3 for members & \$5 for non-members on sale from Tuesday 23 March at respective library.

Wednesday 7 April, 2pm at Bentleigh Library (F)

Family fun with 'Gerry Gee' and ventriloquist Peter Blaskett

Thursday 8 April, 2pm at Caulfield Library (F)

Feathers, fur and fins— touch, listen and learn from our native animals

Monday 12 April, 10.30am at Carnegie Library (P)

Annabel the Clown— a magical journey with music and tricks

Tuesday 13 April, 11am at Elsternwick Library (F)

The Wizard's tale— a puppet show full of mischief and spells

Tickets from all branches

Wednesday 14 April, 10.30am at Bentleigh Library (S) (8-12 years)

Kartooning for kids— a hands-on workshop for 8-12 year olds

Share a story, sing a song

Free pre-school storytimes continue throughout the holiday period. Great fun for children and adults with stories, song, rhymes and more. Bookings not required.

- Monday: Bentleigh Library at 2pm
- Tuesday: Caulfield Library at 2pm
- Wednesday: Elsternwick Library at 11am
- Thursday: Carnegie Library and Bentleigh Library at 11am
- Friday: Caulfield Library at 11am

HIMIE & THE GANG

MUMMY IS COMING HOME FROM THE HOSPITAL WITH A NEW MEMBER TO THE FAMILY!



GOO GOO GA GA!



BOY IS HE UGLY!

GOO GOO GA GA!



WOE IS ME, MY BROTHER HAS A LIMITED VOCABULARY!

Recreation News

Blaze of glory

Four-year-old chestnut mare Blazing Aura had her moment of fame as she raced past the post with jockey Matthew Gatt at the Glen Eira Cup recently.

The race was held at Caulfield Racecourse on Sunday 28 February to honour the strong relationship between the VATC and the Glen Eira City Council. This year's race continues a tradition that began

with the previous City of Caulfield in the 1981-82 racing season.

The trophy, presented by then Mayor Cr Barry Neve, was accepted on behalf of Blazing Aura's owners by

the manager of Contract Racing Syndicate David Moodie.

Attending the trophy presentation were (pictured left to right): Cr Alan Grossbard, then Mayoress Jane Neve, Cr Veronika Martens, Cr Noel Erlich, then Mayor Cr Barry Neve, David Moodie, VATC Chairman John Dillon, Cr Norman Kennedy, trainer Matthew Ellerton, and (behind) Cr Russell Longmuir and VATC Racing Manager John Faulkner.



In Brief

And the Winner Is.....

Andrew Tingay of Murrumbidgee wins a free family pass to see South Melbourne Soccer Club in action at the Bob Jane Stadium in Albert Park. Andrew had to name a Soccerroo from the club and was correct in naming Paul Trimboli.

South Melbourne Junior Soccer has its home base in Glen Eira's Princes Park. Training has already begun with the winter season, commencing very soon. The club runs teams from U 10s through to U 16s. For details please phone Georgia Loupos on 9645 9797.

Keep your club safe

Two more great sports club safety seminars to come: Wednesday 28 April: *Tackle that risk* Seminar for Football, Rugby and Soccer Clubs.

Wednesday 19 May: *Safety Equipment—just use it* An equipment expo for sports clubs.

For further information please contact Recreation Services 9524 3470.

Wheelchair soccer

Wheelchair soccer began in 1993 with a series of come and try days for people with physical and multiple disabilities in the North West Region of Melbourne. Through a series of pilot competitions, rules and regulations were developed and competition structures organised.

The demand for wheelchair soccer has been overwhelming. The southern region competition is about to begin again. The games will be held at the Mills Reserve Hockey Complex at Dandenong and the Ashburton Pool and Recreation Centre. For further information please contact Mary Pace on 9682 9666.

Family fun day

The community can show their support at the Glen Eira Saints AFC Family Fun Day on Saturday 10 April, at Packer Reserve, from 11.30am. Activities include the official launch of the club, BBQ lunch, and live entertainment plus carnival rides, face painting, AusKick activities and a playground. Various AFL stars will make special guest appearances throughout the day.

For further information contact Matt D'Zilva on 9569 8745.

Master plans for Caulfield Park

Caulfield Park is one of the City of Glen Eira's major parks. Few parks contain a greater diversity of beautiful and unusual trees many dating back to the last century and many of them of considerable rarity. They contribute in a major way to the charm and beauty of the park and are one of the reasons for its popularity.

Caulfield Park plays a key part in recreation options for Glen Eira residents. But it also holds opportunities which could be further developed and some conflicts exist between different user groups. New plantings also need to be considered to sustain the park into the next century so our children and grandchildren can enjoy the park just as we do.

Council's Recreation Services have recognised these challenges and recently commissioned landscape architects John Patrick Pty Ltd to prepare a master plan for the park, to reduce conflict and to prepare and clarify directions for Caulfield Park through the next several years.

Caulfield Park offers facilities for both passive and active recreation. It is not uncommon to see young families and older residents strolling through while joggers regularly use it particularly early in the morning and in the evening.

There are also facilities for organised recreation with sports ovals, the bowling club and tennis courts. The Conservatory and War Memorial are other attractions much valued by the community while

the park offers a venue for fairs and art shows and a broad range of community events.

Community views and attitudes are vital to the success of this study. Residents and users are welcome to attend a public meeting to express their views and comment on their vision for Caulfield Park. For those who wish to write, letters should be addressed to Recreation Services, Glen Eira City Council, PO Box 42, Caulfield South 3162 or email: recservices@gleneira.vic.gov.au

Master Plan Public Meetings

Public Consultations are planned on the following dates for Caulfield and Packer Parks and Bentleigh Reserve to enable residents, sports clubs and other key stakeholders to contribute to the design and development of these parks.

Caulfield Park Public Consultation
Glen Eira Council Offices
Wednesday 21 April at 7pm

Bentleigh Reserve Consultation
Bentleigh Pavilion
Monday 3 May at 7pm

Packer Park Consultation
Packer Park Pavilion
Monday 10 May at 7pm

For further information please contact Recreation Services 9524 3470

Clubs merge to become the Glen Eira Saints

Two local football clubs have joined forces to become the Glen Eira Saints. The St Kilda South Caulfield and Glen Huntly VAFA clubs have merged, and will play at Packer Park, Murrumbidgee, in C Grade Amateurs.

Spokesperson Ben King said: "By combining the tradition and talents of both clubs, we have formed a new stronger and fitter organisation on and off the field. The Glen Eira name will bring to our club the benefits of a strong local identity."

Paul Beddoe has been appointed Senior Coach for 1999. Paul is a triple premiership player, senior and reserves coach at De La Salle and is a former coach of St. Bede's Mentone Tigers. Mr King said Paul brings a wealth of experience and a strong professional attitude to the club.

For any further inquiries, contact Ben King on 9326 8666 or 0412 191 466.

