



Road block stops traffic

by Myrine Hawksworth

Council's Local Law officers joined forces with Victoria Police, the Taxi and Tow Truck Directorate, WorkCover and Environment Protection Authority officers and the Sheriff's Office at a road block in Dandenong Road, East Caulfield last month.

The road block randomly stopped drivers of a range of vehicles, between 9.30am and 3pm for licence and vehicle checks, alcohol readings, and outstanding infringement notices.

Council's Local Law Officer Alan Katz said the road block was a success, giving officers an opportunity to show the human face of Council as well as recovering outstanding fines and dog registrations.

"We see it as a great opportunity to raise community awareness of road and traffic safety, and to work as a team alongside the police, the sheriff and other enforcement units," he said.

"Although we did recover some outstanding fines, what was equally satisfying was the public relations aspect—an opportunity to talk to people about their responsibilities regarding pet ownership, the use of disabled parking permits, car maintenance and safety, and to discuss our local laws with the public," Mr Katz said.

Almost 200 vehicles were stopped leading to payment of four outstanding infringements—one motorist made a payment of \$385 and one made an on-the-spot payment of a fine that was not yet overdue.

The Sheriff's Office identified 16 defaulters who had 70 warrants amounting to more than \$16,000 outstanding and issued 7-day notices for payment.



Senior Sheriff's Officer Michael Gaffy (right) checks registration details while Senior Constable Marty O'Donahue fills out some paperwork at the "super site" road block in Dandenong Road last month. Photo: Myrine Hawksworth.

Officer in charge of Glen Eira Traffic Management Unit Sergeant Dean Cooper said such an event was held three or four times per year. The day was very successful and police detected a number of vehicles that should not have been on the road. He said police issued 95 unroadworthy certificates, 84 of which were also issued with penalty notices and four of which were taken off the road on the spot.

Sergeant Cooper said the response from drivers was very positive and most seemed quite accepting of the issued notices.

From August 2001, Council will be offering a computerised payment system which enables people to pay parking infringements via telephone. Residents who have a credit card will be able to pay fines 24 hours a day, seven days a week by ringing the number on the back of the infringement notice.

Fines not paid by the due date incur an additional fee of \$17. A further \$72 is charged if a summons is required to recover payment.

For information on how to avoid parking and traffic infringements, turn to page 3.

Inside

News

Shop of the year 3

Pets as therapy 5

Regulars:

Doing business 4

Arts— exhibitions and events 8

Heritage hap'nings 9

Library News 9

Community Diary 10

Youth 11

Recreation News 12

Cheers! 100 years!

Glen Eira Mayor Cr Noel Erlich welcomed 12 of Glen Eira's most senior residents and their guests at a Centenarian Luncheon last month. Cr Veronika Martens, Cr Dorothy Marwick, Cr Alan Grossbard and Director of Community Services Sue Bradshaw also attended.

Organiser Cheryl Kennedy said the luncheon was a wonderful opportunity for Council to celebrate and acknowledge residents who are or will be centenarians during this year—the Centenary of Federation. "It was a great pleasure to meet and chat with residents who have seen so many changes in our country and community over the last 100 years," she said.

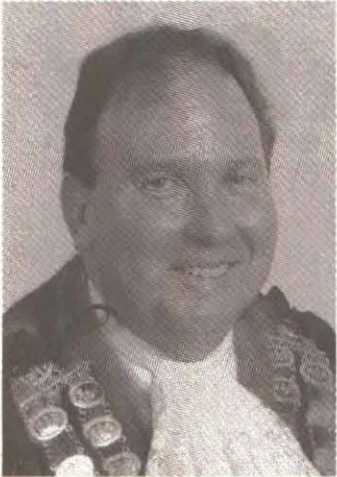
Special guests, all 100 years or more, included Richard Lydiard, Arnold Lawrence, Jim North, Dr Benjamin Cass, Caroline Newman, Louise Homfrey, Vera Sharples, Flo Day, Alice Little, Nellie Palmer, Rachel Isbi and Charlotte Minogue.



Murrumbeena resident Richard Lydiard (104 years) receives a congratulatory note from Mayor Cr Noel Erlich at the Centenarian Luncheon held last month.

Budget 2001-02 pages 6&7

MAYOR'S column



Was it Benjamin Franklin who said: "...in this world nothing can be said to be certain, except death and taxes"? I'd like to add one more thing that's certain—in a Federal election year, at around budget time, one year into major tax reform, everyone will be **talking** about taxes!

Council's budget has been prepared and approved and we know it's going to cause some frustration that rates (taxes!) have increased this year. But I'd like to take this opportunity to give you some thoughts on the whole rates issue.

Every property owner in Glen Eira (and indeed everywhere) pays rates. This payment contributes to Council's ability to provide services and facilities for residents and business people throughout the City. The amount we pay is based on our assets—the value of the property we own, multiplied by a percentage that applies equally to all residential properties. This is the best way to ensure rates are applied equitably.

Many people might hold the opinion that since they don't use Council's services and facilities they shouldn't have to pay rates. But just owning property in our City means you take advantage of Council services. You walk or drive down footpaths and roads which are built and maintained by Council. Doing either at night is easier because Council provides the street lighting!

The Metropolitan Fire Brigade charges a levy each year to all Councils which fall within its area to support the maintenance of this essential service—rates contribute to the payment of this \$1 million levy.

And for ratepayers who do live in the City—what about all the wonderful parks and gardens, playgrounds and reserves? All maintained, developed and planted by Council to provide sporting and passive recreational opportunities and open space. And this year Council adds another park to the list, Mallanbool Reserve.

Many ratepayers take for granted the cleanliness and safety of food premises (Council's Environmental Health Officers regularly audit food premises); the provision of Maternal and Child Health Services such as immunisation (a free service) and kindergartens, not to mention sporting and recreation, pools, libraries and arts facilities.

Council also provides hard rubbish collection on call. Ratepayers can ring up at any time of the year and book a collection of hard rubbish. Then there's Senior Citizen groups and activities, accommodation and meeting rooms for community groups, Local Law, Parking and Traffic Control, access to information through the Service Centre, street sweeping and weed control.

Thank you U3A Glen Eira

Minister for Aged Care Bronwyn Pike MLA recently tried her hand at bocce at the new court at U3A Glen Eira as part of the organisation's open day activities.

Ms Pike attended with Glen Eira Mayor Cr Noel Erlich, Chief Executive Officer Andrew Newton and VicTrack Manager Commercial Development Services Andrew Webster to help U3A celebrate International Year of Volunteers. They enjoyed displays and demonstrations of sculpture, oil paintings, T'ai chi, Israeli Folk Dancing, and of course bocce.

The Minister presented U3A Glen Eira with a certificate on behalf of the State Government to acknowledge the organisation's "contribution to the well being of the Glen Eira community" in the International Year of Volunteers.

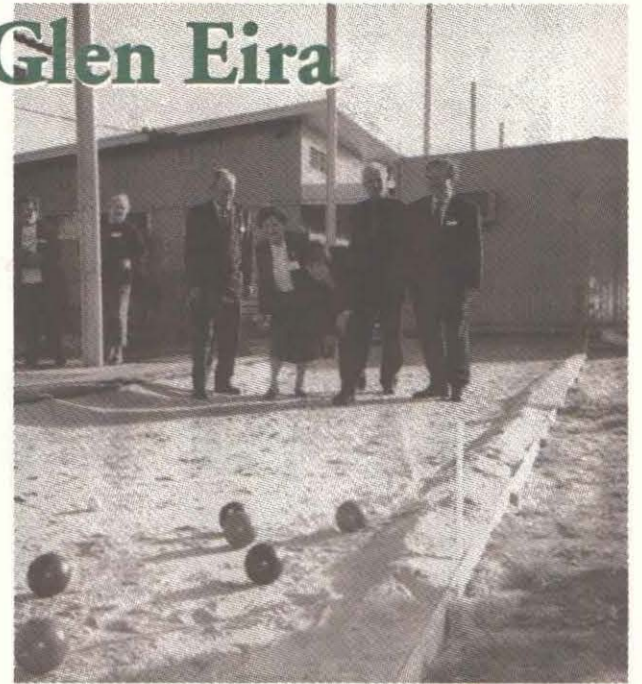
"A community where people feel included and have a role, is one where the whole community is richer. Thank you [U3A] for making sure Victoria remains an inclusive, just, and whole community," Ms Pike said.

Mayor Cr Noel Erlich told the group Council was very proud to have U3A in the City and see it making a difference to people's lives. "We have two U3As in Glen Eira and they are both very strong. I think it's terrific when people who have retired can join these organisations and continue to put in to their community."

And Council is still managing to achieve all of this despite the State and Federal Governments' "cost shifting" efforts—representing a loss of \$864,000 to Glen Eira this coming year. Yes, inevitably, rates have gone up, but the average is still lower than in 1992-93 (after adjusting for inflation).

So next time you're out and about in our City, take a look around you at all the work being done to develop our parks, to improve our facilities, and to give our City a modern civic infrastructure, and think about the range of services you have access to, some of them unlimited—all for an average cost of \$13 per week.

— Cr Noel Erlich
Mayor



Minister for Aged Care Bronwyn Pike MLA (centre) tries bocce with (from left) Glen Eira CEO Andrew Newton, U3A Glen Eira president Margaret Robinson, VicTrack Manager Commercial Development Services Andrew Webster, and Mayor Cr Noel Erlich.

Listen in

to Council's radio hour on
88.3 Southern FM

Tune in to all the latest in
Council and community news on
Thursday 30 August 1-2pm

Deadlines for Glen Eira News

Deadline for the next issue of the Glen Eira News will be **Monday 13 August** for delivery 4-6 September, 2001.

Coming deadlines:

Monday 10 September. Delivery: 2-4 October.
Monday 8 October. Delivery: 6-8 November.

For advertising contact Margaret on 9524 3224.

To submit editorial material write to:
Glen Eira News PO Box 42, Caulfield South 3162
or email: editor@gleneira.vic.gov.au

Councillor contacts

JASPER WARD



Cr David Bloom
Phone/Fax:
9597 9825
Mobile:
0417 169 679



Cr Eamonn Walsh
Phone/Fax:
9597 9826
Mobile:
0417 314 233



Cr Rachelle Sapir
Phone/Fax:
9579 7218
Mobile:
0409 186 941

MACKIE WARD



Cr Norman Kennedy
Ph: 9564 8395
Fax: 9564 8402
Mobile:
0419 379 540



Cr Veronika Martens
Ph: 9579 0297
Fax: 9579 7072
Mobile:
0419 218 474



Cr Peter Goudge JP
Phone/Fax:
9568 5472
Mobile:
0419 505 614

ORRONG WARD



Cr Alan Grossbard JP
Phone/Fax:
9533 0052
Mobile:
0407 374 474



Cr Dorothy Marwick
Phone/Fax:
9596 1459
Mobile:
0417 398 250



Cr Noel Erlich
Ph: 9524 3225
Fax: 9524 3358
Mobile:
0417 218 485

GLEN EIRA CITY COUNCIL

PO Box 42 Caulfield South 3162 Ph: 9524 3333 TTY: 9524 3496 Fax: 9523 0339

Email: mail@gleneira.vic.gov.au Internet: http://www.gleneira.vic.gov.au

DISCLAIMER
The information in this publication is of a general nature. The articles contained herein are not intended to provide a complete discussion on each subject and/or issues canvassed. Glen Eira City Council does not accept any liability for any statements or any opinion, or for any errors or omissions contained herein.

Let them *eat cake!*

Glen Eira Mayor Cr Noel Erlich and Chief Executive Officer Andrew Newton enjoyed a treat at Council's Shop of the Year Award winner Aviv Cakes and Bagels in Glen Huntly Road, Elsternwick last month.

The cake shop participated in Council's Safe Food Program, which ensures all food sold at food premises is safe for human consumption. Environmental Health Officers assess local food businesses each year against strict hygiene standards and provide a food safety rating.

As winner, Aviv Cakes received the highest food safety rating of all Glen Eira food premises. The food safety rating represents the effectiveness of food safety

practices implemented by the business and the ability of the proprietor to demonstrate his or her knowledge in relation to food safety.

Businesses achieving excellence in food safety are awarded a 4 or 5 star food safety certificate. These certificates are displayed within local food establishments and provide customers with an indication of how the shop performed on the day of the food safety assessment.

Aviv Cakes and Bagels, first opened in May 1988 by proprietors Herbert Portmann and Hans Haldemann, offers a wide array of specialty cakes, pastries, bagels, biscuits, quiche and pasties.

The shop first received a 4 star food safety rating in 1997 and since that time has maintained excellent



From left: Aviv Cakes and Bagels proprietors Hans Haldemann and Herbert Portmann and staff member Sandra Biaioni offer Mayor Cr Noel Erlich and CEO Andrew Newton a taste of the shop's 5 star wares. Photo: Bernie Bickerton.

food hygiene practices. Aviv Cakes first developed and implemented a food safety program in 1999 and received its first 5 star food safety rating last year.

Improving access to businesses

Glen Eira City Council has received a \$14,850 development grant from the Municipal Association of Victoria and the Department of Human Services to help promote access for people with disabilities in Glen Eira.

The funds will be used to develop practical information kits and pilot workshops for retailers, business owners and community service providers on how to enhance service and improve access.

Council's Director Community Services Sue Bradshaw said the project would provide an exciting and challenging opportunity for the community. "Access is not simply about ensuring people can get in and out of shops," Ms Bradshaw said.

"The workshops are aimed at developing a better understanding of the needs of people with disabilities and increasing awareness of the legislative requirements. They will provide practical advice to business owners on how services and facilities can be made more accessible."

Australian Bureau of Statistics figures show Glen Eira has more than 23,000 residents who experience some form of disability. Ms Bradshaw said access issues needed to be addressed within the City, so that people with disabilities were encouraged to shop locally.

"People with disabilities will often go to larger shopping centres because they know they can get in and out of shops and don't have to worry about steps or cluttered footpaths. Yet, these same residents are telling Council they would prefer to shop locally and receive a more personalised service, if given the opportunity," she said.

Ms Bradshaw said Council planned to introduce awards later this year, to acknowledge local businesses and community groups which provided high-quality access and service for people with disabilities.

She said the workshops and information kits would help the business and community sectors become eligible for new awards.

Focus on safety



COMMUNITY SAFETY WEEK

2 - 8 September 2001

Glen Eira Community Safety Committee will participate in Community Safety Week from 2 to 8 September to raise awareness of community safety.

Community Safety Week provides opportunities for local communities to work together towards making their community safer—to *Think, Act, Feel and Be Safe*.

Glen Eira Community Safety Committee will hold a Secure Living event during Community Safety Week. The focus will be on providing information, talks, and ideas about neighbourhood and personal safety. Neighbourhood Watch, in conjunction with Victoria Police Crime Prevention, will provide security and

safety seminars for residents. The Community Safety Committee is also keen to hear ideas about promoting neighbourhood and personal safety and will run a competition to find the best idea.

The event will be held at Moorleigh Community Village, 92 Bignell Road, East Bentleigh on Wednesday 5 September.

Details are being finalised. Please contact Council's Community Development Officer on 9524 3448 for further information.

No parking here

The best way to avoid receiving a parking fine is to obey the relevant restrictions. In Glen Eira there are two forms of parking signs—the red ones which relate to State law and the green ones which relate to local law.

The green signs are installed by Council for the safety of pedestrians and motorists. They also help ensure a continuous movement of traffic through shopping centres, residential areas, near schools and along main roads during peak times.

Council's Civic Amenity Manager Carl Russo said parking restrictions in areas such as schools and school crossings were installed primarily to help ensure the safety of children.

"Many schools have signed two-minute parking zones which enable parents to deliver or pick up their children at school, without the risk of them having to cross busy roads on foot," he said.

Mr Russo said timed parking signs (ie green signs) in shopping centres and residential areas made sure all drivers had an equal opportunity to park.

Some common parking infringements include parking:

- within 10 metres of an intersection;

- within 20 metres of a school crossing;
- within 10 metres of a tram stop;
- in a no standing area;
- across a driveway;
- within three metres of a post box;
- within one metre of a fire hydrant;
- in a permit only residential area without an approved Council permit; or
- in a clearway.

As of 1 July 2001, failing to comply with green parking signs carries a \$50 fine, while the penalty for disobeying a red parking sign remains at \$100.

Mr Russo said Council's traffic officers regularly patrolled all areas to ensure parking regulations were being followed.

"The traffic officers are there to do a job. Don't abuse them," he said. "They don't have the authority to withdraw an infringement notice once it has been entered into the machine."

Residential parking permits are available to residents who live in a street with time restricted or "permit parking only" signs. Applicants must be able to prove they reside in a property in that particular street to receive a permit.



Doing Business



Working together to promote shopping centre mix

Retail success appears more inclined to rely on shopping variety than shopping centre size—according to media reports which note a resurgence in shopping at strip shopping centres in favour of larger shopping centres, such as Chadstone.

In this climate of change, Council's Business Development Unit has been working with Elsternwick Mainstreet Committee to raise trader awareness of the importance of providing and promoting an appropriate mix of retail options in strip shopping centres.

Business Development Manager Lynda Bredin said Council hoped bringing together sectors of the business community would help traders achieve an attractive business mix, and develop a successful promotion strategy. She said Melbourne School of Art, Leader Newspapers, and the Victorian Amateur Turf Club had offered support in promoting the strip centre.

Ms Bredin said: "There has definitely been a shift away from hard top centres towards the strip centres. The slump against hard top shopping is reported as being from 78 per cent to 50 per cent in the past five years."

She said an emerging "breed" of shoppers, referred to as individual consumers, showed a preference for

boutique shopping over department stores. "The rise in this consumer category has been blamed for declining sales in traditional chain stores. We see it as an opportunity for strip shopping centres."

Melbourne School of Art, a major education provider and contributor to the arts in Melbourne, has offered time, expertise and assistance to the traders in the form of photography and layout design to promote the centre's features.

Ms Bredin said the work in Elsternwick was the beginning of what she hoped would become a City-wide focus—she planned to meet with traders in other strip centres to raise awareness of business mix and the value of appropriate promotion.

"Getting the business mix right in a centre is very important, but informing consumers of what the centre has to offer is imperative," Ms Bredin said.



From left: Council's Business Development Manager Lynda Bredin, Melbourne School of Art director Tim Bateson, Leader Newspaper Sales Manager Paul Woolard, Mainstreet Committee co-ordinator Cathy Madigan, and Leader Newspaper sales representative Natalie Peters get a feel for promotional options in mainstreet Elsternwick.

BusEd forum

More than 50 representatives from local business and trader associations spent an evening brainstorming ideas for the Glen Eira BusEd program.

The program aims to create valuable working relationships with positive and practical outcomes for business and education—to develop projects to suit the education and business sectors' needs and establish ways businesses can support education programs.

Topics discussed included assisting businesses with IT difficulties and web design, engineering challenges, assisting in marketing of individual businesses and peak business groups, such as shopping centre trader groups and street design. Developing valuable work experiences for students and developing a register of businesses interested in undergoing projects with secondary and university students was also discussed.

Business Development Manager Lynda Bredin said it became clear that any projects devised through the BusEd program will need to be based on being a valuable and positive experience for both students and business.

Women and business— together

The recently formed Glen Eira Women's Business Network met last month with guest speaker Chisholm Institute senior development consultant Yolanda Ballan who presented *Blueprint for Personal Success*.

Together the group established knowledge areas which they wish to pursue. Some items now on the agenda are marketing, finance, negotiating and presentation skills, industrial relations, and information technology.

Meetings are held on the 2nd Thursday of each month at 7pm. Business women interested in joining the Glen Eira Women's Business Network can contact Manager Business Development Lynda Bredin on 9524 3384 or email lbredin@gleneira.vic.gov.au

You are invited to an informal talk on:

Food for toddlers

with speaker Caulfield Community Care Centre Dietitian Ingrid Phyland.

At: Bentleigh Maternal and Child Health Centre, 542 Centre Road, Bentleigh

When: Thursday 23 August, 1.30–3pm

Cost: \$3 donation

Contact: 9524 3403

City of
GLEN
EIRA

Talks for parents

Parents of children up to six years and interested grandparents are invited to a series of parenting talks conducted by Glen Eira Maternal and Child Health Service and Caulfield Community Health Service.

Topics for August:

14 August *Your Child and Foot Care*

21 August *Relaxation Techniques for Busy Parents*

Cost: \$3 per session.

All sessions will be held at 6 Jersey Parade, Carnegie, 1.30–2.30pm followed by coffee and a chat.

Contact: Elizabeth Saddington on 0419 348 936 or Judy White on 9524 3403.

City of
GLEN
EIRA

126 years young

by Maureen Bathgate

At 126 years old, Smokey is clearly Heathlands Community's oldest resident—and its most pampered. Smokey, aged 18 in human years, is an adored grey cat, who has lived at the Caulfield North aged care residence since being found as a kitten.

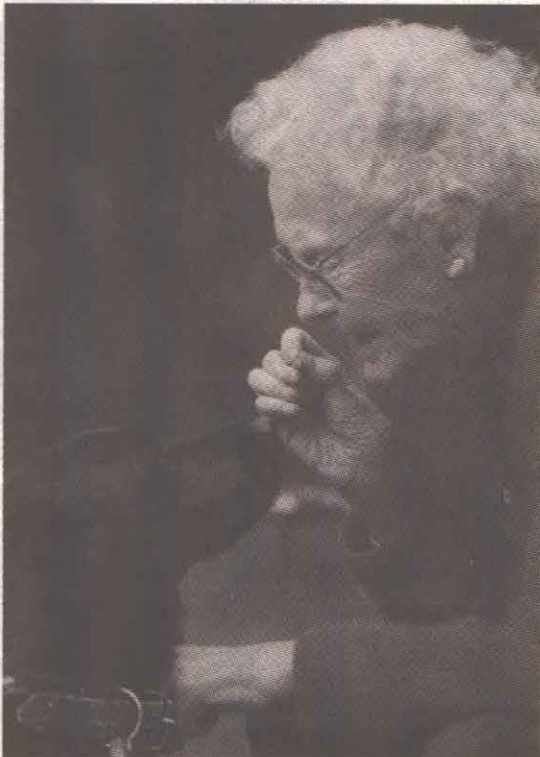
Apparently he was dumped nearby when just a few weeks old. A Heathlands resident found him and he has remained part of the family ever since.

Heathlands Supervisor Julie Rooney said: "The residents adore Smokey. He has lived in several different rooms. He usually has a couple on the go at any one time."

He also makes good use of the lift to move between floors. "Sometimes one of the staff will hear a meow and find him in the lift. He runs in when the doors open and finds he can't get out when it stops," Ms Rooney said.

Smokey's appearance belies his age. Many people are astonished to learn he is 18 years old—he looks like a cat a third his age. Ms

Rooney said even the vet is amazed at how healthy Smokey is. "He has a bit of a kidney problem, but that's about it," she said. "People think he is very appropriately placed here at Heathlands."



Tammy the dog shares some time in the sun with Heathlands resident Marjorie Kenny.

Smokey spends most nights curled up on the bed of resident Joyce Leney. The clever feline usually opens the screen door with his paws, then knocks on Mrs Leney's wooden door, meowing loudly to get in.

"I love Smokey, he's beautiful," Mrs Leney says hugging the cat tightly in her arms. "Once he's on the bed, he just sits there, he won't shift. I have to climb over the top of him to get in."

The only member of the Heathlands family who does not like Smokey is Tammy, the resident dog. Tammy, a nine-year-old black Labrador who has lived at Heathlands for six years, is scared of the cat and will not enter a room if Smokey is there.

But Tammy does receive her fair share of affection from residents and staff. She gets taken for walks twice a day and occasionally sneaks into the dining room to try to pick up a treat. Resident Marjorie Kenny remembers one incident shortly after she arrived at Heathlands. "I gave her a bit of toast in the dining room and found out later that I shouldn't have. She is on a special diet because she's got arthritis," Mrs Kenny said.

The Heathlands menagerie does not stop there. Apart from the dog and cat, there are two cockatiels called Banjo and Patty and six canaries who have babies every year.

Heathlands resident Joyce Leney snuggles up to Smokey who is 126 in cat years. Photos: Bernie Bickerton.



Pets as therapy

Job vacancy



Glen Eira City Council seeks personal carers for its residential communities.

Part time and casual positions are available at Camden, Heathlands, Rosstown and Spurway.

For more information contact Patrice Dolan on 9500 2711, Anne Davey on 9563 1911 or Human Resources on 9524 3451.

Volunteers contribute to community well being

U3A Glen Eira grew out of Caulfield U3A nine years ago. In that time more than 4000 passengers have travelled all over Victoria on U3A bus trips.

Co-ordinator Charlotte Meisser said day trips were conducted every month and extended trips were also held throughout the year. She said most trips booked out quickly, and at times she had been forced to book a second bus to cater for the numbers.

"It's great. Our members make new friends and enjoy a feeling of well being, and for many of them it's a chance to travel to places they otherwise may never see. Our bus trips contribute to the economy of the rural community as well, because our members pay entrance fees, meals, and other spending," she said.

Ms Meisser said this contribution to the welfare of the Glen Eira community is run entirely by volunteers.



The view from the boardwalk at Seal Rocks, Phillip Island, taken by a U3A bus trip participant.

Planning and Environment Act (1987)

Notice of the preparation of an amendment to a planning scheme

Glen Eira Planning Scheme

Amendment C20

Glen Eira City Council Strategic Town Planning Unit has prepared Amendment C20 to the Glen Eira Planning Scheme.

The amendment proposes to change the Glen Eira Planning Scheme by introducing:

- an Open Space Contributions Policy (Clause 22.05) that will apply to all land in the City, and
- a new Schedule to Clause 52.01.

The intention of the Open Space Contributions Policy is to provide a framework to ensure contributions are made from subdivisions that will provide for funding of the provision and improvement of public open space. Under the policy, subdivisions will be charged up to 5 per cent of land value as a public open space contribution, however reductions will be allowed depending on satisfying criteria listed in the policy.

The new Schedule to Clause 52.01 outlines the type of subdivision to which the policy applies and the amount of contribution that needs to be paid for public open space.

The following documents may be inspected during office hours free of charge:

- amendment;
- documents supporting the amendment; and
- the explanatory report about the amendment, at either

Glen Eira City Council
Planning Counter (Service Centre entrance)
Corner Glen Eira and Hawthorn Roads
Caulfield

or

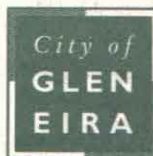
Department of Infrastructure
Customer Service Centre
Upper Plaza, Nauru House
80 Collins Street
Melbourne

The amendment can also be viewed on Council's website at www.gleneira.vic.gov.au

Any person who may be affected by the amendment may make a submission to the planning authority. **The closing date for submissions is 10 September.**

Submissions should be sent to:
Amendment C20
Strategic Town Planning Unit
Glen Eira City Council
PO Box 42
Caulfield South, 3162

— Jason Close
Manager Strategic Planning



Budget winners: safety, community facilities and pensioners

Council adopted its budget for 2001-2002 on 25 June. A general property rate of 4.1271 per cent has also been announced.

Renewal works across the City will continue at a sustainable level of more than \$10 million. This will include catch up work on footpaths and general maintenance on roads. Capital works scheduled for the coming year include completion of the new Packer Pavillion, upgrade of Packer Park (including more than 30,000 new plants) and development of the new Mallanbool Reserve. Major roadworks scheduled include reconstruction of Bamba Road, Clarence Street, Malane Street and Scott Street and resurfacing of Bignell Road and Booran Road.

Significant progress has been made on Council's major projects program. A total of \$9.16 million will be spent on 60 additional nursing home beds at Warrawee in Bentleigh East, and planning continues for a Council-owned indoor sports facility— both of which will be funded from the sale of obsolete assets, not rates. Design will also commence on a community centre (new library and other Council services) in Carnegie.

Careful financial planning will enable Council to provide better levels across a range of services: increased safety measures such as public toilet patrols, dangerous dog controls, bicycle path improvements, syringe retrieval and disposal; an additional 8000 hours in home, personal and respite care; continued improvements to disability access to facilities; and implementation of the new tobacco and food safety laws from July 2001.

A Glen Eira pension rebate of \$35 per property will be introduced this financial year for those ratepayers who receive a State Government Pension Rebate concession. (The Government's rebate has not been increased since 1981.) Based on the current number of eligible pensioners in Glen Eira, the value of this concession to our pensioners will be \$371,000.

Councillor allowances have been set at \$15,000 per annum (fully taxable), with Mayoral allowance at \$45,000 per annum (fully taxable).

The average rates and charges have increased by 9.8 per cent. Although rates have increased, the average is still lower than in 1992-93 (after adjusting for inflation) and 12 per cent below the average of Melbourne metropolitan councils.

If Council rated at the average across Melbourne, rates income would be \$5 million higher.

Mayor Cr Noel Erlich said a number of factors had contributed to the increase in rates— CPI, infrastructure catch up works and cost shifting by the State and Federal Governments.

"This 'cost shifting' by the governments will cost Glen Eira \$864,000 this coming year which is equivalent to 3 per cent of our rates. We've lost funding for roads and increases in the cost of library and Home and Community Care (HACC) services have not been covered by government funding. Plus new regulations and increased fees have also meant a bigger financial strain passed on to local government," he said.

Service charges for 2001-02

Annual service charges for the collection of recyclables and disposal of household and commercial rubbish have been set as follows:

| | |
|------------------------------------|-------------------------------------|
| Residential 240 litre bin | \$105.60 per bin |
| Residential 120 litre bin | \$94.60 per bin |
| Flats | \$94.60 per bin |
| Commercial / industrial properties | \$85.10 per bin (\$93.60 incl. GST) |

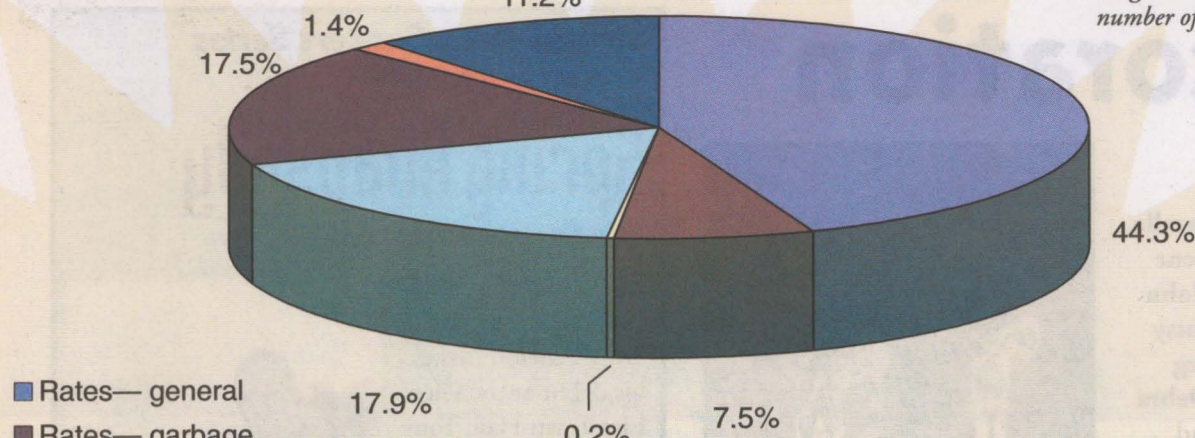
Please note: Council also offers a voluntary fortnightly green waste collection for an annual (non-refundable) subscription of \$48.54 (incl. GST).

Capital works include the completion of the pavilion at Packer Park.

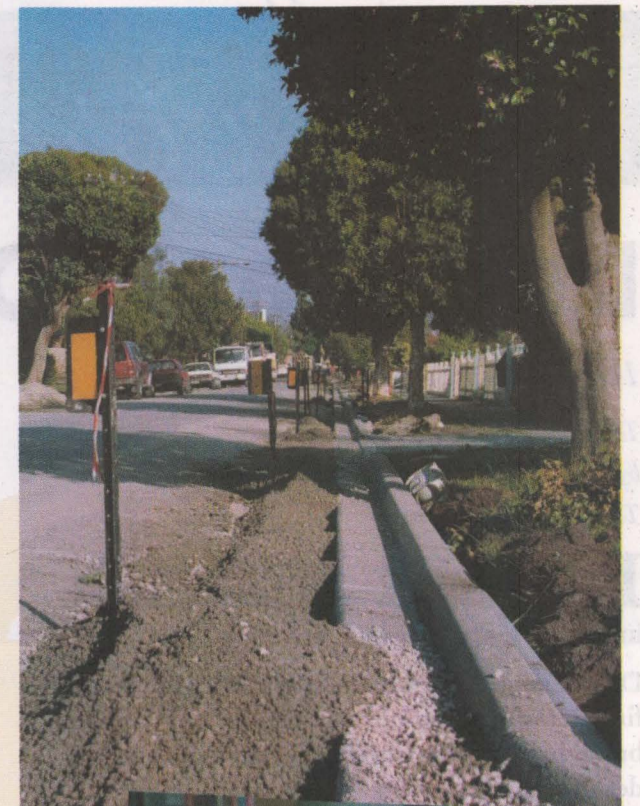


Budget 2001-02

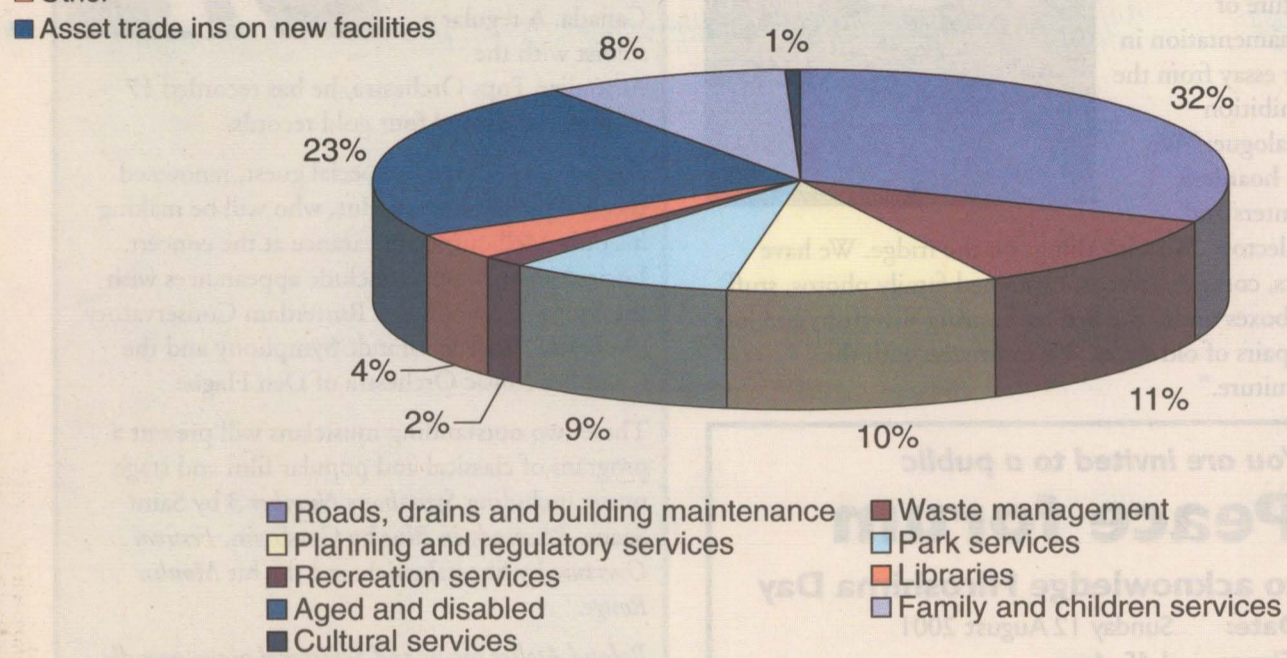
Income



Kerbing and channel reconstruction works are being carried out in a number of Glen Eira streets.



Expenditure



The budget will allow for further plantings at Packer Park, more than 30,000 new plants will go in.

Warrawee Nursing Home will get 60 additional beds.



Design for the new community centre in Carnegie will begin— plans include library and other services.



Catch up renewal works on footpaths and roads will continue throughout the City.

Language Line

Approvato il budget comunale

L'amministrazione comunale ha annunciato il budget per l'anno 2001-2002, fissando una tassa comunale generale del 4,1271 per cento.

Le tasse e altri oneri comunali hanno subito un aumento del 9,8%. Malgrado l'aumento, la tassa comunale media è tuttora inferiore alla tassa per il 1992-1993 (presa in considerazione l'inflazione) e inferiore del 12% alla tassa media dei comuni metropolitani di Melbourne.

Il comune spenderà più di \$10 milioni sui lavori di rinnovo e \$9,16 milioni su grandi progetti - 60 letti nuovi presso Warrawee; pianificazione di un nuovo centro sportivo al coperto a Princes Park e un centro comunitario a Carnegie.

I pensionati che ne hanno diritto potranno chiedere uno sconto di \$35.

市政府通過了預算

市政府公佈了 2001-2002 年的預算，並規定了一般地產稅率為 4.1271%。

平均稅率和收費提高了 9.8%。雖然稅率提高了，但是平均稅率還是低於 1992-1993 年 (通貨膨脹調整之後)，而且比墨爾本各區市政府的平均稅率低 12%。

市政府將撥款一千多萬元用於重建工程，並撥款九百六十六萬元用於重大項目 -- 在 Warrawee 增設 60 張新床位，並分別在 Princes Park 和 Carnegie 計劃建造市政府擁有的室內體育運動設施和社區中心。

符合條件的養老金領取者可申請減免 \$35。

Принят новый муниципальный бюджет

Муниципалитет принял бюджет на 2001-2002 финансовый год и определил общую ставку налога на недвижимость - 4.1271 процентов.

В среднем налоги на недвижимость и плата за различные услуги возросли на 9.8 процентов. Хотя налоги на недвижимость выросли, в среднем они все еще ниже чем в 1992-1993г. (с учетом инфляции), а также на 12 процентов ниже, чем в среднем по Мельбурну.

Муниципалитет предполагает потратить более 10 миллионов долларов на ремонтно-восстановительные работы и 9.16 миллионов долларов на новые крупные проекты: создание 60 новых мест в Warrawee, проектирование муниципального спортивного центра в Princes Park и общественного центра в Carnegie.

Пенсионеры могут подать заявление на скидку в 35 долларов при уплате налога на недвижимость.

Η Δημαρχία υιοθετεί τον προϋπολογισμό

Η Δημαρχία ανακοίνωσε τον προϋπολογισμό της για το 2001-2002 και όρισε μια γενική κλίμακα ακινήτου στα 4,1271 τα εκατό.

Τα κατά μέσο όρο δημοτικά τέλη και χρεώσεις αυξάνονται κατά 9,8 τα εκατό. Παρόλο που τα τέλη αυξήθηκαν, ο μέσος όρος πάλι είναι μικρότερος απ' ότι το 1992-93 (μετά την προσαρμογή του πληθωρισμού) και 12 τα εκατό παρακάτω απ' τον μέσο όρο των μητροπολιτικών δημαρχιών.

Η Δημαρχία θα δαπανήσει πάνω από 10 εκ. δολάρια σε έργα ανασυγκρότησης και 9,16 εκ. δολάρια σε μεγάλα έργα - 60 νέα κρεβάτια στο Warrawee, προγραμματίζει για μια δημοτική κλειστή πισίνα στο Princes Park, κι ένα Κοινοτικό Κέντρο στο Carnegie.

Δικαιούχοι συνταξιούχοι μπορούν να κάνουν αίτηση για μια παροχή των 35 δολαρίων.

Glen Eira Arts Complex,
corner Glen Eira and Hawthorn Roads, Caulfield
Website: www.gleneiraarts.citysearch.com.au

Death and Decoration

16 August–9 September

To be opened 15 August at 6pm

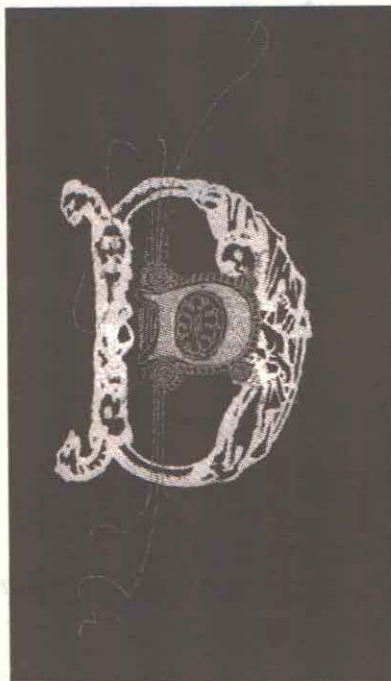
by Victorian College of Arts Head of Art History and Theory Edward Colless.

Is pattern merely a decorative pleasure, an added extra to the workings of daily life, or does it serve important functions for domestic life?

Decoration has often been dismissed within recent fine arts as frivolous and superficial. This exhibition brings together eight artists whose works celebrate decoration by exploring its relationship to the reflective and sombre notions of death. Using an eclectic range of materials—objects, paintings and printmaking—the works bring the relationship of death and the after-life closer to the living.

Works by:
Raymond Arnold, Narelle Jubelin, Irene Barberis, John Neeson, Patsy Payne, Stieg Persson, Debra Phillips and Anne Louise Rowe.

Maria Kunda ponders over the nature of ornamentation in her essay from the exhibition catalogue: "We are hoarders, hunters and collectors. We stick things on the fridge. We have pets, compost, weeds, unframed family photos, stuff in boxes under the bed harbouring silverfish, and lots of pairs of old shoes. We improvise with the furniture."



cinema
sprints

The Glen Eira Film Festival, now in its second year, is calling for entries to the main competition Cinema Sprints—inviting films of 30 seconds to three minutes duration, open theme, format and genre. Total prize pool: \$10,000 in cash and prizes, includes the FUJIFILM Best Film Award of \$5000 (\$3000 cash/\$2000 film stock courtesy of FUJIFILM, and \$1500 film processing courtesy of Cinevex).

Telephone, email or download an entry form and be part of the fun. Contact: 9524 3287 or 9524 3390 Email: rverde@gleneira.vic.gov.au or csmith@gleneira.vic.gov.au
Website: www.cinemasprints.com

FUJIFILM
PROFESSIONAL MOTION PICTURE PRODUCTS
FILMINK

You are invited to a public Peace forum to acknowledge Hiroshima Day

Date: Sunday 12 August 2001

Time: 1.45–4pm

Venue: 12 Ripon Grove, Elsternwick 3185

Free admission

(Please bring a plate and join us for lunch at 12.30pm, if you wish)

An event sponsored by Pax Christi Australia and Soka Gakkai International Australia.

Contact: Michael Henry 9571 1936 or Penny Koh 9523 7669.

Sunday Arvo Concert Series
proudly presents

Spring Rhapsody

Sunday 2 September at 2.30pm

Internationally acclaimed musician Tony Fenelon makes his debut at the Glen Eira Town Hall. Tony has recently returned from his 15th overseas tour, including concerts in USA, UK and Canada. A regular soloist with the Australian Pops Orchestra, he has recorded 17 albums and earned four gold records.



Tony will be joined by special guest, renowned classical pianist Lucien Hut, who will be making his only Melbourne appearance at the concert. Lucien's performances include appearances with the Santa Fe Symphony, Rotterdam Conservatory Orchestra, the Rio Grande Symphony and the Chamber Music Orchestra of Den Hague.

These two outstanding musicians will present a program of classical and popular film and stage music including *Symphony Number 3* by Saint Saens, *Rhapsody in Blue* by Gershwin, *Festival Overture* by Shostakovich and the hit *Moulin Rouge*.

Roland Atelier organ and Schimmel piano proudly sponsored by Bernie's Music Land, Ringwood.

Tickets: \$20/\$15 (incl. GST)

Venue: Glen Eira Town Hall
Corner Glen Eira and Hawthorn Roads, Caulfield

Bookings: Glen Eira Service Centre
on 9524 3333

Exhibitions

Glen Eira City Gallery: corner Glen Eira and Hawthorn Roads Caulfield.

Hours: 10am–5pm Monday to Friday, 1–5pm Sat/Sun/Public Holidays. Contact: David O'Halloran on 9524 3214.

More Than Gum Trees

Melbourne Society of Women Painters
Continues until 12 August

The Melbourne Society of Women Painters has a rich and significant history as outlined in Juliet Peers' book *More Than Just Gum Trees*. The society was formed in 1902 by a group of former students of the National Gallery School (including Alice Bale) to encourage and support the work of women artists. The exhibition features stylistically diverse painting and sculpture from the society's 100 members.

B'Nai Brith

Jewish Youth Art Award
19–26 August (Opening 19 August 6pm)

An annual celebration of the talents of Victorian Jewish Youth is staged by the Shalom Unit of B'nai Brith. The exhibition includes a wide range of media from painting to collage and sculpture from Jewish youth aged from 11 to 18 years.

YOUTHPIH2001

Photographic Award and Exhibition
29 August–9 September

Announcement of winners and opening 29 August.

The reputation of this photographic award has continued to grow since its debut almost a decade ago. Its aim has been to encourage photography as an art practice by people under 26 years of age.

The success of this award has had as much to do with the freshness of approach and the quality of these young artists' work, as community partnerships with the City of Glen Eira (particularly in association with Caulfield Rotary Club and The Melbourne School of Art).

The award is structured into entries by secondary students Years 7–12, and an open section for those up

to 25 years of age. The prizes are a \$1000 cash first prize in the open section, and tuition to the value of \$1000 for secondary students.

The quality in the digital photographic entries received continues to increase, but traditional photography is still well represented.

The winning entries will be selected by curator and writer Natalie King, Melbourne School of Art artist and photography teacher Kerrilee Bateson-Ninnis, and Monash University Faculty of Art and Design Gallery Manager Malcolm Bywaters.



Acknowledging our past

With National Aborigines and Islanders Day Observance Committee (NAIDOC) Week last month and International Day of the World's Indigenous People on 9 August, Council's Access and Equity Officer Sharon Granek asks how much do we know about our City's indigenous heritage? She spoke with Aboriginal Consultant Gene Blow recently.

Aboriginal Consultant Gene Blow has conducted research into Glen Eira's Koorie history, and was happy to share his insights into our City's past.

"The Bunurong and Wurundjeri people once shared this land, an area surrounded by swampland. The central part of the swamp, where the Caulfield Racecourse now stands, fed the many creeks and tributaries. And it wasn't that long ago that lyrebirds freely wandered among black and silver wattles and swamp gum trees here," Gene said.

Being a large billabong, the Caulfield area was well known for its feasting, corroborees and seasonal hunts for the local delights. According to Gene, a common sight during March and April would have been the herding of eels into traps.

"These eels migrated from Vanuatu to the area for spawning, a journey taking anywhere up to six years. The eels would find their way to the Australian mainland, swim up the rivers of western Victoria to the Yarra River, and live in the swamplands for up to 20 years before returning to Vanuatu to die," he said.

Migratory birds from South Africa and southern India would also find their way here, produce offspring during spring and fly back to their migratory home six months later.

Gene said the area became known as Le Mann's Swamp but when the Yarra River was redirected in the late 19th Century, the flooding ceased and the surrounding creeks dried up.

Glen Eira has a very rich and colourful Koorie history, a history very few people know about. By looking carefully, it is possible to find some interesting links with this past. For example Kooyong Road takes its name from the Koorie word for fishing spear—a clear indication of the type of activities that used to take place here.

To find out a more about the City's Koorie heritage, the Glen Eira libraries have a number of books: *From Sand, Swamp and Heath* by Peter R Murray and *Caulfield's Heritage* by Dr Geulah Solomon are just two.

Parents of children with special needs

Are you interested in meeting other parents of children with special needs?

Be part of a day time group— socialise, listen to guest speakers, and provide mutual support to each other.

First meeting: Glen Eira Maternal and Child Health Service (beside Town Hall) on Wednesday 15 August, 1.30–3pm

Contact: Deena Goldbloom on 9822 7333 or Phillip Lipshut on 9807 5829.



Heritage hap'nings

by Sherry Hopkins

Council's actions and policies reflect the way in which the community values Glen Eira's heritage buildings. This month we begin a column which we hope will become a regular item in the *Glen Eira News*— to keep you up to date with heritage issues, bring you the latest information and ideas, and publish upcoming events and progress on amendments to Council policy.

Heritage advisory service

Council provides a free heritage advisory service. Heritage advisor Bernadette De Corte is an experienced architect and heritage advisor.

Bernadette can offer free advice to:

- property owners with respect to any alterations and conservation work;
- architects and building designers of heritage projects prior to finalising designs; and
- builders and tradespeople on relevant conservation/restoration techniques and material sources for specific tasks.

Bernadette is available for on-site meetings or can be visited at the Council offices. Please ring in advance for an appointment. For bookings or further details contact Council's heritage office on 9524 3476.

Heritage area guidelines

The Heritage Office is preparing a series of guidelines to support the implementation of Council's Heritage Policy and heritage planning controls contained in the Glen Eira Planning Scheme. The guidelines are general in scope and form an initial step in the design approach.

Guidelines have been completed for Caulfield North, Beauville Estate, Hillcrest Estate and Park Crescent heritage areas.



The guidelines provide general design advice for a range of typical architectural forms found in each heritage area. Principles and techniques are set for achieving appropriate heritage conservation objectives. Council will use these guidelines, as well as the advice of its heritage advisor, when assessing town planning applications for development proposals within a heritage area.

For details about the guidelines, contact the heritage office on 9524 3476.



Website now ready for visitors

The new Glen Eira Library and Information Service website is now available. The new-look site is easy to navigate and provides access to a range of services.

Whatever people need to know about Council's libraries— it's all there! Access the catalogue, check loans, become a member, find out what events are on. Library members can access special databases, use the email enquiry service, access the Business Information Centre and much more.

Visit the libraries at www.gleneira.vic.gov.au/library.htm

Children's Book Week

Children's Book Week 2001 will be celebrated from 20 to 24 August. Each year Council's Library Service invites local primary schools to attend authors' talks held at both Caulfield and Bentleigh libraries. This year the authors will be Brain Caswell— author of *A Cage of Butterflies* (1992), *Lisdalia* (1994), *Maddie* (1995), *Astarias* (1996) and the enormously popular *Alien Series* (1998)— and Jeanette Rowe, best selling author and illustrator of *Scallywag*, the stunning

picture book *Hidden Treasures* and a series of preschool ABC books.

In conjunction with the program for schools, Council's regular preschool storytimes will feature stories and activities based on the books nominated for Book of the Year— Early Childhood.

This month's "Top 10"

Here is a selection of 10 of the books nominated for Children's Book of the Year Awards. This year, 34 books have been nominated in a range of categories. The complete nomination list is available at all branches.

For older readers

Wolf of the Fold Judith Clarke
Fighting Ruben Wolfe Markus Zusak

For young readers

Away with the Birds Errol Broome
Something's Fishy, Hazel Green Odo Hirsch

Early childhood

Max Bob Graham
Ernie Dances to the Didgeridoo Alison Lester
You'll Wake the Baby Catherine Jinks

Picture books

Fox Ron Brooks
The Singing Hat Tohby Riddle
A is for Aunty Elaine Russell

COMMUNITY *Diary*

Meetings and clubs

Life Activities Club—Caulfield will meet at Gladys Machin Hall, Cedar Street, Caulfield on 15 August at 7.30pm. Guest speaker. Supper served. Visitors welcome. Contact: 9569 5249.

Over 40s Club dance— all ages— old time; modern; new vogue at Ormond Uniting Church, corner North and Booran Roads, Ormond on 2nd and 4th Saturdays of each month at 7.45pm. Supper and live music. Cost \$7. Contact: 9570 4564.

Club 66 hold old time – modern – new vogue dances, live band, on the 1st and 3rd Saturday of each month at Bentleigh Uniting Church Hall, Centre Road, Bentleigh (opposite RSL). All age groups welcome. Cost \$6. Contact: Margaret 9587 1092.

Young Mothers under 25 years welcome to join friendly group at Bentleigh Bayside Community Health Service, Gardeners Road, East Bentleigh every Thursday 10am–noon. Child care available. Meet other young mothers. Contact: Denise 9575 5349.

The Indoor Bias Bowlers, Bentleigh RSL seeks more players. Thursday nights at 8pm. Good fun and gentle exercise with friendly people. Contact: Dee 9557 4617.

Bentleigh Life Activities Club offers opportunities to meet new friends and enjoy social activities. Contact: 9557 2562 or 9563 2554.

The Nursing Mothers' Association of Australia has changed its name to the Australian Breast feeding Association. Caulfield group will meet: Friday 10 August 1–3pm (discussion and counselling) and Wednesday 22 August 1–3pm (discussion on breast milk supply). Contact: 9578 0628 or 9571 3651.

Events

Bagel Belt: The Jews of St Kilda and Caulfield— nostalgic and historical exhibition of the Jewish experience in Caulfield and St Kilda at the Jewish Museum of Australia, Gandel Centre of Judaica, 26 Alma Road, St Kilda until 30 September. Hours: Tuesday–Thursday 10am–4pm and Sunday 11am–5pm. Contact: 9534 0083.

Music Lovers' Society will hold a concert at Southern Cross Anglican Church, Dandenong Road, Caulfield North (opposite Glenferrie Road) on Sunday 26 August at 2.30pm. Featuring: Meredith Jones, Katie Higgins and Katherine Gillon. Cost: \$10 (conc. \$7, children under 15 \$5, family \$25, members \$7). New members welcome. Refreshments. Contact: 9822 7292 or 9571 0850.

Broken Cords or Balances

IN DOUBLE HUNG WINDOWS

- ◆ Bottom sash (2 cords) from \$40
- ◆ Both sashes (4 cords) from \$50
- ◆ Tubular balances from \$55 per pair
- ◆ Pensioner discounts available

Price depends on size, condition and number

- Also ◆ Fit heavier counter weights
◆ Convert concealed to tubular balances

**John Moline:
9822 3470 AH**

Cut out this ad and keep for future reference

Murrumbeena Baptist Church will hold a craft fair at the corner of Sydney Street and Murrumbeena Road on Saturday 18 August. Demonstrations and sales including: smocking, cards, Christmas decorations, toys, children's craft. Entry: \$3 includes Devonshire afternoon tea.

Contact: 9569 0365 or 9568 8817.

The Moorabbin Historical Society will open Box Cottage, Joyce Park, Jasper Road, McKinnon on Sunday 26 August 2–4.30pm. Admission by donation. Contact: 9578 7060.

Hughesdale Art Group will hold a demonstration of hand-painted eggs using a traditional Ukrainian method with wax and paint at Hughesdale Community Centre, corner Poath and Kangaroo Road on Wednesday 22 August at 7.30pm. Visitors welcome. Contact: Pat 9885 6407.

Volunteers

Southern Citizen Advocacy seeks people to become volunteer advocates to assist an adult with a disability to participate in community life, including representation, support and friendship for 2–3 hours per week. Contact: Kerry 9576 0155.

Friends for Older People— do you have an hour to spare once a fortnight? Older people in nursing homes and hostels require interested people to share quality visiting time. Volunteers will receive orientation and ongoing support. Contact: Judy 9828 7296.

Job vacancy

City of
**GLEN
EIRA**

Glen Eira City Council seeks an accredited immunisation nurse for the Public Health Unit.

The position is permanent part-time, about 10 hours per week.

Please contact Council's Public Health Unit on 9524 3279.

JUDO

YAMADA JUDO ACADEMY

Caulfield Recreation Centre
6 Maple St, Caulfield South
9578 4460

Self defence, Concentration, Discipline, Co-ordination, Self-esteem, Enjoyment, Stress Release

BEGINNERS TO BLACK BELT – From 4 years old

Glen Huntly Friendship Group

99 Grange Road, Glen Huntly

Activities for August

Friday 10 August

Bus trip to Monash Gallery of Art to view Web of Life by celebrated artist Annemeike Mein. Her passion for Australian flora and fauna is reproduced in a delightful way. Lunch at Smorgy's and a look at Box Hill shops. Cost: \$28 including lunch. Contact: Margaret 9596 6124.

Thursday 23 August

Visit Melbourne's newest attraction, the Melbourne Aquarium. Meet with Ursula and Kathleen 'under the clocks' at Flinders Street station at 10am. Entrance fee \$11 (concession). Lunch available at the aquarium or eating venues just across the river at Southbank. Must book.

Contact: Ursula 9568 8564 or Kathleen 9544 0259.

Volunteers urgently needed — to participate in a valuable community service

The Social Support and Monitoring Service is part of the Home and Community Care Program, providing one-to-one assistance to frail-aged, confused elderly, and people with disabilities, enabling them to live independently in their own homes.

Volunteers are urgently needed for one or two hours per week or fortnight, to assist with tasks such as shopping, transport to local appointments, and friendly visits. A car is necessary for shopping and transport tasks.

Contact: Co-ordinator Susan Rutherford on 9524 3314.

Immunisation dates for August

Murrumbeena Baptist Church

44 Murrumbeena Road, Murrumbeena
Monday 13 August 10–11am

Glen Eira Town Hall

(entry via Glen Eira Road)

Corner Glen Eira and Hawthorn Roads, Caulfield
Tuesday 14 August 6–7.30pm
Wednesday 5 September 9.30–10.30am

Bentleigh–Bayside Community Health Service

Gardeners Road, East Bentleigh
Tuesday 21 August 10–11am
Saturday 25 August 9.30–11am

Glen Huntly Maternal and Child Health Centre

Corner Royal and Rosedale Avenues, Glen Huntly
Wednesday 22 August 9.30–11am

Bentleigh Baptist Church

10 Vickery Street, Bentleigh
Monday 3 September 1.30–2.30pm

SPECIAL U3A BUS TRIP

BENDIGO – ECHUCA – HARCOURT – DAYLESFORD

4 DAYS / 3 NIGHTS 29 October–1 November

Tour includes Sky Dancer Butterfly Sanctuary and Orchid Nursery, HARCOURT - Pink Cliffs, HEATHCOTE - 2-hour Murray River cruise and sightseeing tour, ECHUCA - Talking Tram and Deborah Goldmine, BENDIGO - Goldfields Mohair Farm, LOCKWOOD - Lunch at Royal Hotel, DAYLESFORD.

3 nights accommodation Bendigo Motor Inn.

For more details or copy of itinerary
Phone 9572 0571 or (A/H) 9523 7862.

U3A BUS TOURS

15 August, 9am–4pm

A DAY ON THE MORNINGTON PENINSULA

We travel to Flinders via Balnarring and Shoreham. Morning tea at The Bakehouse, Flinders. Stroll along the Rye Ocean Beach. 2-course lunch at RSL Club, Rye.

12 September, 8.30am–4pm

KYNETON "GOLDEN MILE OF DAFFODILS" TOUR
First stop, morning tea and tour of "WOORABINDI" GARDEN at Lauriston. We visit the studio/gallery of KYNETON FINE CHINA AND CERAMICS, displays and artists at work. Lunch at Doyleys Café then visit MARIA COYLE'S SCULPTURE GARDEN. Our drive along the Golden Mile of Daffodils will be a highlight.

3 October, 9am–3.30pm

Brand new GIPPSLAND GREEN ASPARAGUS TOUR
Experience everything from paddock to plate. Cooking demonstrations, produce for sale. Incl. bus, morning tea, entry and 2 course lunch (2 choices).

Enquiries: 9572 0571 or (A/H) 9523 7862

Glen Eira

Youth Page



Council rewards youth excellence

Glen Eira City Council has recognised the exceptional talents of 29 young people at its annual Foundation for Youth Excellence presentation evening.

The Foundation for Youth Excellence is a Council program which recognises young people aged between 10 and 25 years who have achieved excellence in the fields of creative and performing art, education, leadership or sport.

Each recipient receives a trophy, plus financial assistance to participate at state, national or international levels in their chosen field.

This year's recipients were involved in a range of events, including the Ballroom Dancing World Championships in England, the International Model Solar Car Challenge in Australia, the National Schools Aerobics Championships in Adelaide, World Inline Speed Skating Championships in Columbia, the Women's Baseball Series in Canada and the 2000 Paralympics in Sydney.

The Foundation was established in 1993 as a means of promoting young people and encouraging their talents. Since then, Council has distributed more than \$72,000 in financial awards to young people across Glen Eira.

This year's presentation evening featured performances by four Foundation recipients. Saxophonist Jason Xanthoudakis performed *Beat Me* by Barry Cockcroft; dancer Sanae Furuhashi performed a self-choreographed neo-classical ballet piece to *The Sheltering Sky*; student Simon Guttman spoke on his experiences studying economic policy in the United States; and six members of the Young Voices of Melbourne performed two works, the South African song *Tshoholoza* and a gospel number *The Storm is Passin' Over*.

Glen Eira Mayor Cr Noel Erlich said Council was committed to involving young people in the planning, development and delivery of services for young people in Glen Eira.



Photos: Bernie Bickerton.



He said it was through the foundation and other youth forums, that Council and the community could witness the diversity of Glen Eira's young people.

"The commitment, energy and enthusiasm we have witnessed is commendable and truly highlights the degree of excellence that is achievable by young people when they are given the opportunity," Cr Erlich said.

"Our young people are very much our future and these awards also give Council the opportunity to reaffirm our commitment to supporting them."

Foundation for Youth Excellence Chairman Cr Alan Grossbard said the parents, teachers and mentors of the foundation recipients also deserved praise for the support, encouragement and assistance they provided.

He said it was through this kind of support that young people were able to continue to strive for and achieve excellence in their chosen field.

— Maureen Bathgate

Make your mark

The Glen Eira News Why? Gen Youth Page provides young people with the opportunity to communicate with each other and the wider community. Youth Services invites young people to send articles, cool websites, creative writing, photos, and drawings for publication on this page. This month we feature a personal account from Jessica (right).

If you have something you would like to contribute contact youth worker Mark Bekerman at the Why? Stop 9572 5389.

A day in the life of a homeless person

by Jessica Perry

...BZZZZZZ, it's 8:30am on some day of the week, time to get up. It takes a second to adjust; I have been in a number of hostels over the weeks and sometimes you forget where you went to sleep last night. Great, everyone's annoyed with each other cause it's so early. In most refuges you have to be out of the house by 10am for the day regardless of the weather.

I get up and jump in the shower. Then all I hear is "Jesse, Jesse"— it's the workers! So I jump out of the shower, chuck on some clothes and run down the stairs, 'cause they want to have a talk. So I go into the office and they ask if I know anything about the toilet paper that's gone missing, and show me my bag. (I'd forgotten I had 12 rolls of toilet paper, two litres of milk and a tea towel stashed.) I get asked why I took them. So I explain that two of my friends had just moved into their own place, after finding long term housing a few days ago, and had run out of everything, so I got them a couple of things. Now I'm being asked to leave for stealing, even though I was doing it for a good cause.

See, when you're homeless and are living in a refuge you have to be careful what you say and do and although the workers are there to help, they also can seem like your enemies at times. See, I only took toilet paper and I got kicked out. Not because they wanted me to go, but because of the way the system runs.

So now it's 1pm and I'm at the Why? Stop in Carnegie. I have about five hours to find somewhere to stay for tonight and every night after that. The homeless population is getting a lot bigger and it's becoming even harder to find a bed.

By 1.50pm, I have called every refuge I could find and they're all full except one and the only problem with that one is it is so far away. I have no money for the train so even if I wanted to, I could not get there. I know when you're living at your parents' all you want to do is leave home and live on your own, go out with friends and party. But for me it is not that easy. Not just for me, but for a lot of people— they're on the streets instead of being in a nice, warm, family home.

So, for everyone out there reading this story at home— stay at home as long as you can with loving parents or guardians because it's not worth being out on the streets. There are other ways of sorting out problems and stopping abuse. I strongly recommend the Why Stop? Information Centre, there is no way I could have got through this without the help and support of the staff.

Now to end this tale, I could say I found a nice house and am very happy but no, I won't lie— I'm still trying to find a bed. So, if you see a person on the streets, young or old, don't be rude or snide because some people can't help where they are today.

Contact the Why? Stop Youth Information Centre at 54 Rosstown Road, Carnegie or call on 9572 5389.

Recreation News

Playground takes shape

by Byron Douglas

One could be forgiven for thinking that a giant space ship has landed in Packer Park, but there is nothing to fear, it's just a new playground taking shape.

The redevelopment of Packer Park is well under way with stage one complete and stage two about to begin. An important component of stage one was the



No, a space ship hasn't landed! It's the new Giant Orion Spacenet being installed.

installation of the Giant Orion Spacenet. This unique piece of play equipment was installed for Council by Omnitech, a Vermont based company which imports these from Germany.

The play unit is the first of its type to be installed in Australia with only about 20 of them in the world—others have been installed in London, Paris, and Berlin. Play unit installation specialist Torsten Frank flew in from Germany to supervise the installation.

The unit is designed for children between 8 and 15 years and is built entirely of cables suspended by 3.5m masts. Suspended on the cables are three rubber platforms for children to jump and bounce on. The unit will give countless hours of fun to young people and even for those of us a bit past the climbing and bouncing stage, it is still worth a look to marvel at this exceptional play unit.

More exciting play equipment is to come with a giant gecko coated in rubber and a large wooden snake that will play musical sounds when people run over it. Modular play equipment complete with lookouts will also be installed. This park will certainly become a



Play unit installation specialist Torsten Frank gives a helping hand at Packer Park. Photos: Bernie Biclerton.

favourite destination for young people and a popular picnic spot for the whole family.

Packer Park Mel Ref: 68 J8

Get into bowls

Have you ever thought of giving bowls a try? It's a popular sport and open to all levels of ability with both men's and women's competitions. The McKinnon Bowls Club is keen to have new members join as the summer season is fast approaching.

The club was founded in 1950 and plays in Joyce Park, Ormond. It is recognised by the Royal Victorian Bowls Association as one of the leading clubs and has been a venue for many important events.

The club caters for bowlers of all standards and beginners are offered free coaching and the use of a set of bowls for the first season. Discount fees are offered to new members or players transferring from other clubs. Non-bowlers can also join as social members at a very low rate.

Pennant competition ranges from the lower grades through to the top class but social games are available for those not interested in competing. Apart from the



McKinnon Bowls Club members in action at Joyce Park.

bowls, the club offers very comfortable facilities and a social calendar ranging from dinner dances to card days and in-house entertainment. The club also has darts, pool and winter indoor bowls.

More information is available from the McKinnon Bowls Club on 9578 2942 or from club representative, Bruce Hall on 9570 4836.

Joyce Park Mel Ref: 68 F9

In brief

Time for a walk

Hopetoun Gardens is a fine example of a mature 19th Century park. Walkers are encouraged to take time to explore the park with guidance from Council's interpretive tree walk. Brochures are available at the bandstand in the centre of the park. The tree walk features details on 12 of the major trees in the park and was established with the generous support of the Rotary Club of Elsternwick.

Hopetoun Gardens Mel Ref: 67 H4

A young enthusiast for the interpretive tree walk in Hopetoun Gardens.



Park draft master plan on display

Two draft master plan options for the Duncan Mackinnon Reserve are now on display for community comment. This major park caters to sports clubs, schools and the community—providing a valuable resource for Glen Eira.

The draft master plans reflect consultation with and input from the community and stakeholders. Residents are invited to make written comments on the two options.

Good planning of parks ensures they will be able to serve the changing needs of park users and provide a vision for how the park can be developed. The master plan for the Duncan

Mackinnon Reserve will make certain future park developments are in line with community requirements and that the park is preserved for generations to come.

The draft master plan options are on display at the reserve, Council's Service Centre and Benteigh Library.

Written submissions should be sent to Recreation Services, Glen Eira City Council, PO Box 42, Caulfield South 3162 or via email to recservices@gleneira.vic.gov.au no later than close of business Friday 24 August.

Duncan Mackinnon Reserve Mel Ref: 68 K9



GYMBAROO
4 MTHS TO SCHOOL YEARS

COME & ENJOY OUR:

- Specialised equipment •
- Structured program •
- Climbing, rolling, balancing & jumping •
- Songs, dance and rhythm •

Ample & traffic-free parking
Operates: Tues, Wed, Thur & Sat

Moorleigh Community Village Gym
Rob Flavell Wing, (Cricket Gnd End)
90-92 Bignell Rd East Benteigh
TELEPHONE GAIL 9570 1422