

## “New” Warrawee brings better care

By Sophie Aristodemou

Glen Eira Mayor Cr Dorothy Marwick has officially opened Council’s extension of Warrawee aged care facility in Bentleigh East.

More than 100 Warrawee residents, their families and Council staff braved the elements to celebrate the recent opening of the extended facility held in the courtyard of the new administration block.

Works on the new facility began in November 2001 and the extended Warrawee opened for business in December of last year. Final renovations to the original facility were recently completed.

In addition to the original section, Warrawee now has two new sections including an administration block and four accommodation houses that boast an additional 60 beds. The original part of the facility has been upgraded to meet current aged care standards.

Warrawee was entirely funded by Council and complies with 2008 building certification. It is part of Council’s aging in place program, which enables residents to stay within the same facility as their care needs increase.

The upgraded facility has eight houses. Low residential care has four houses with a total of 60 beds, high residential care has three houses with a total of 30 beds and a house that contains the administrative services.

Cr Dorothy Marwick said the municipality had one of the oldest demographics in the State and caring for the elderly was an important part of Council’s community services.

“Aged Care is one of our community’s greatest needs and one of Council’s top priorities,” Cr Marwick said.

Council spends 27 per cent of its recurrent budget delivering aged care services.

“But it is not enough, our community is 400 beds short of what the Federal Government says Glen Eira needs. That’s 400 elderly people who need residential



*Residents of Warrawee watch the official opening of the new extension and upgrade of the facility from the comfort of their newly developed and refurbished home.*

*Mayor Cr Dorothy Marwick (right) meets Warrawee residents Evelyn Witchell and Jill Ross at the extension opening.*

*Photos: Bernie Bickerton.*

care but cannot get it in the community in which they live.”

“In addition, there are now also hundreds of elderly residents waiting for someone to deliver care in their homes. Meeting these needs is what we all pay our taxes for. We urge our Parliamentarians to deliver the taxes we pay to meet these important aged care needs.”

Council’s older aged care facilities, Camden and Heathlands were merged with the former Warrawee facility as they were unable to be upgraded to meet increased standards and requirements in aged care. The facilities were sold to finance the Warrawee extension.

Cr Marwick said that the aboriginal meaning of the word Warrawee — *a place to stop and rest a while on a journey* — was just as important as the facility.



*One of the new accommodation houses built as part of the Warrawee upgrade.*

### Aged care feature

Older people are a big part of the Glen Eira community and Council places heavy emphasis on providing services that enable these important residents to live comfortably, safely and healthily in their own homes. This month’s feature, on pages 6 and 7, shows the range of support and services offered by Council and volunteers to older people living independently in our City.

## Inside

### News:

State adopts Council planning program	3
Recognising Glen Eira’s volunteers	5
Reducing plastic bag use	5
Responsible pet ownership	5

### Features:

Aged care services	6-7
--------------------	-----

### Regulars:

Language Line	4
Arts	8
Library News	9
Community Diary	10
Youth News	11
Recreation News	12



# MAYOR'S column



Another landmark in the development of the City of Glen Eira was reached when I recently hosted the formal opening ceremony for Council's refurbished and extended Warrawee aged care facility.

The original 30-bed facility at Warrawee came about as a result of the

work of a group of community minded citizens known as the Moorabbin Community Extended Care Society. More than 10 years ago it was they who did the hard work and the fundraising to build a nursing home on land owned by the Council.

The recent works have seen the original 30-bed nursing home refurbished and an extra 60 beds added. It cost the Council \$9 million and not one cent was contributed from either the State or Federal Government. The project was funded by the former aged care facilities at Heathlands and Camden and some other assets of a lower priority which meant that Council did not need to spend any of its rate income.

Our City has the second oldest demographics of any municipality in Melbourne which means that aged care is one of our community's greatest needs and this is reflected through the services that Council is delivering. For example, 27 per cent of Council's recurrent budget is spent on delivering aged care. As well as Warrawee, we also deliver residential care at Rosstown and Spurway. The largest group of staff members are home care workers who deliver care to about every 15th house in Glen Eira and around the City 120,000 meals-on-wheels are delivered each year.

Turning to another subject, the spring session of State Parliament is due to introduce a Local Government Amendment Bill that will bring in changes for all local governments. Perhaps one of the most significant will be the need for all Councils to introduce a Councillors' code of conduct within three months of the Bill receiving assent and becoming law.

I welcome this initiative and I will be working to ensure that Glen Eira plays a leading role in establishing such a code. I am particularly attracted to the model being developed in the United Kingdom which is based on what have become known as the Nolan principles. These principles have evolved from the third report of the Committee on Standards in Public Life on Standards of Conduct in Local Government, a report better known as the Nolan Report.

As we move forward into the 21st century, I believe our community has increasing expectations of all public office holders. As such, it is my firm belief that the development of a code of conduct, or if you will a new ethical framework, will benefit Council from the increased trust it will engender and local residents who will be reassured that their Council is run to serve them and not any individual or sectional interests.

I intend to comment on the various Nolan principles over the coming months and to stimulate thought in the broader community.

— Cr Dorothy Marwick  
Mayor

## School wises up to waste

Glen Eira schools are fast becoming wise to waste reduction — and putting all their efforts into doing something about it.

Coatesville Primary School recently became the first Glen Eira school to receive recognition from the *Waste Wise School* program. The school was presented with a *Becoming an Accredited Waste Wise School* sign by Mayor Cr Dorothy Marwick for its innovative environmental programs.

The *Waste Wise School* program, developed by EcoRecycle Victoria and supported by Glen Eira City Council and the South Eastern Regional Waste Management Group, encourages schools to think about the way they dispose of waste and become more enviro-conscious.

Under the guidance of Environmental Co-ordinator Lyn Connor, Coatesville Primary has incorporated waste minimisation programs into its curriculum.

The school runs an aluminium can recycling centre (cash for cans) and an area of the school has been allocated for composting and growing vegetables.

"Rubbish-free days are organised where students bring their lunch in reusable containers with no throw away food wrappings and nothing that can't be composted," Ms Connor said.

Each classroom has a compost bin for fruit scraps and a paper recycling program has been introduced.

To compliment the practical side of the school's environmental program, it is taught as part of the science curriculum.

At the presentation to Coatesville Primary School Cr Marwick said the sign showed the community that the school is educating its students about waste and litter reduction.

"Council is a strong supporter of recycling and as students already know, recycling helps look after our environment," she said.



Students at Coatesville Primary School show Mayor Cr Dorothy Marwick their compost bin, one of many environmental initiatives being implemented that helped the school becoming *Waste Wise* accredited. Photo: Bernie Bickerton.

As part of the accreditation process, schools make a commitment to meet eight statewide standards for excellence in reducing waste and litter. They have a year to achieve the standards and become a fully accredited waste wise school.

Glenhuntly Primary School also recently became an accredited *Waste Wise* school.

### Deadlines for Glen Eira News

Deadline for the next issue of Glen Eira News will be **Wednesday 4 June** for delivery 4-6 July.

#### Coming deadlines:

Wednesday 2 July. Delivery 1-3 August.

Wednesday 6 August. Delivery 5-7 September.

For advertising contact the PR Unit on 9524 3366.

To submit editorial material write to:

Glen Eira News PO Box 42, Caulfield South 3162  
or email: [editor@gleneira.vic.gov.au](mailto:editor@gleneira.vic.gov.au)

#### DISCLAIMER

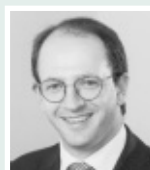
The information in this publication is of a general nature. The articles contained herein are not intended to provide a complete discussion on each subject and/or issues canvassed. Glen Eira City Council does not accept any liability for any statements or any opinion, or for any errors or omissions contained herein.

Copyright © Glen Eira City Council 2003

The copyright for all material in this document is the property of Glen Eira City Council (unless otherwise noted). Other than as permitted under the Copyright Act, no part of the document may be reproduced, reused, copied, stored or transmitted in any form without prior written permission from Glen Eira City Council. Contact Manager Public Relations and Marketing on 9524 3333.

## Councillor contacts

### JASPER WARD



**Cr Jamie Hyams**

Phone/Fax:  
9578 8966  
Mobile:  
0418 374 072

[jhyams@gleneira.vic.gov.au](mailto:jhyams@gleneira.vic.gov.au)



**Cr Bob Bury**

Phone/Fax:  
9557 7724  
Mobile:  
0418 317 128

[bbury@gleneira.vic.gov.au](mailto:bbury@gleneira.vic.gov.au)



**Cr Margaret Esakoff**

Phone/Fax:  
9578 2877  
Mobile:  
0407 831 893

[mesakoff@gleneira.vic.gov.au](mailto:mesakoff@gleneira.vic.gov.au)

### MACKIE WARD



**Cr Veronika Martens**

Phone: 9579 0297  
Fax: 9579 7072  
Mobile:  
0419 218 474

[vmartens@gleneira.vic.gov.au](mailto:vmartens@gleneira.vic.gov.au)



**Cr Rachelle Sapir**

Phone/Fax:  
9579 7218  
Mobile:  
0409 186 941

[rsapir@gleneira.vic.gov.au](mailto:rsapir@gleneira.vic.gov.au)



**Cr Peter Goudge JP**

Phone/Fax:  
9439 5535  
Mobile:  
0419 505 614

[pgoudge@gleneira.vic.gov.au](mailto:pgoudge@gleneira.vic.gov.au)

### ORRONG WARD



**Cr Alan Grossbard JP**

Phone/Fax:  
9533 0052  
Mobile:  
0407 374 474

[agrossbard@gleneira.vic.gov.au](mailto:agrossbard@gleneira.vic.gov.au)



**Cr Dorothy Marwick**

Phone: 9524 3225  
Fax: 9524 3358  
Mobile:  
0417 398 250

[mayor@gleneira.vic.gov.au](mailto:mayor@gleneira.vic.gov.au)



**Cr Noel Erlich**

Phone/Fax:  
9533 0054  
Mobile:  
0417 218 485

[nerlich@gleneira.vic.gov.au](mailto:nerlich@gleneira.vic.gov.au)

### GLEN EIRA CITY COUNCIL

PO Box 42 Caulfield South 3162 Phone: 9524 3333 TTY: 9524 3496 Fax: 9523 0339  
Email: [mail@gleneira.vic.gov.au](mailto:mail@gleneira.vic.gov.au) Website: [www.gleneira.vic.gov.au](http://www.gleneira.vic.gov.au)



# State adopts *Council planning program*

An award-winning Glen Eira City Council planning concept designed to fast track application timeframes has been taken up by the State Government.

The *Pre-lodgement Certification of Planning Applications* program piloted by Glen Eira City Council was officially co-launched, and named *A Better Way*, by the Minister for Planning Mary Delahunty and the Municipal Association of Victoria (MAV) at Parliament House last month.

Last year Council and took part in a pilot to develop and implement the program.

The program aimed to provide applicants with an incentive to follow best practice by seeking professional help from planning consultants, and discussing their application with neighbours and Council, before lodging their planning applications.

Director City Development Jeff Akehurst said the impetus for *A Better Way* was Council's planning office being clogged by planning applications.

"One of the main outcomes of the pilot was the improvement of the quality of applications," Mr Akehurst said.

"Prior to *Pre-lodgement of Certification of Planning Applications* about 98 per cent of applications lodged were rejected by virtue of inadequate information. Pre-certification by consultants ensures three important steps are taken prior to the application being lodged — all necessary information is submitted, there is consistency with State and local planning policy, and a meaningful pre-application meeting has been carried out with neighbours.

"These steps lead to quality applications being lodged, the reward of which is quicker decision making."

At the launch, Minister Delahunty said the program would bring certainty, consistency, sustainability and community back to the planning agenda.

"If you enlist the help of a qualified planning consultant to put together a solid application with no holes, your chances of success are 20 per cent better than for someone who goes it alone," Ms Delahunty said.

MAV President Cr Brad Matheson said the Glen Eira pilot project confirmed that the concept had the potential to deliver real benefits to all users of the planning system.



[Left-Right] Glen Eira Mayor Cr Dorothy Marwick, Council's Director City Development Jeff Akehurst, Minister for Planning Mary Delahunty and Council's Group Manager Statutory Services Duncan Turner at the launch of *A Better Way*. Photo: Ron Torres.

"It offers a potential solution for those municipalities experiencing difficulties achieving statutory timeframes for the processing of planning applications and will lead to higher quality applications being lodged with councils." Cr Matheson said.

A booklet on Council's pre-lodgement certification program entitled *Better planning for better plans* is available from Council's Service Centre, corner Glen Eira and Hawthorn Roads, Caulfield.

## Safe parking rules!

People often park their car oblivious to whether or not they are breaking the law or, worse still, causing a safety hazard.



When they return to a parking infringement neatly placed under the car windscreen wipers, it is sometimes unexpected.

Parking rules are put in place for the safety of pedestrians, cyclists and other motorists.

About 70 per cent of infringements issued in Glen Eira are for safety-related offences. Taking care when parking can not only save money but also improve community safety.

Below is a list of parking rules that may be a useful guide to stopping safely around the City streets.

- A driver must not park within 20 metres from the nearest point of an intersecting road at an intersection with lights.
- A driver must not park within 10 metres from the nearest point of an intersecting road at an intersection without lights.
- Cars must face the direction of travel when parked
- A driver must not park on a children's crossing, or pedestrian's crossing, or on the road within 20 metres before and 10 metres after either of these crossings.
- Drivers are encouraged to read the parking signs before leaving their car — especially look out for permit zones, loading zones, mail zones and parking reserved for people with disabilities.
- Drivers must not park within 1 metre of a fire hydrant, fire hydrant indicator or fire plug indicator.
- A driver must not park 20 metres before or 10 metres after a bus stop sign.
- A driver must not park 10 metres before a tram stop sign.
- A driver must not park on a bicycle path, footpath, shared path, dividing strip or nature strip adjacent to a length of road.
- A driver must not park within three metres of a public post box.

## Bread handouts *not helping*

Kind-hearted Glen Eira residents are unwittingly creating a public health hazard by leaving large quantities of bread as bird food in local parks.

The profusion of bread and other foodstuffs regularly left in areas such as Greenmeadows Gardens in St Kilda East and Elsternwick Plaza in Elsternwick has left Council with little choice but to put a call out to all residents to "please stop".

Acting Director Infrastructure Kerry Martin said that while the sentiment was commendable, the parks' native birds were bearing the brunt of the bread frenzy.

"The native birds are becoming dependent on handouts and losing the ability to forage for themselves," he said.

"Wild birds should be allowed to live naturally. Ample natural food is available in the parks without the need for the birds to be hand fed or bread left for them."

The food left out also encourages rats, mice and other vermin that enjoy a free feed — causing problems when these disease carrying creatures try to find somewhere warm and dry to live, usually in nearby houses, gardens and sheds.

Mr Martin said that if was not enough to discourage well-meaning residents, leaving large quantities of food on the ground constitutes littering and is an offence under the Environment Protection Act. Council Local Law and Environmental Health officers have the power to issue infringement notices



to anyone caught littering. The fine for littering is \$100.

"Leaving bread and other food in the parks also makes them untidy and less pleasant places for everyone," Mr Martin said.

Council asks residents to keep this in mind so that everyone can enjoy the parks but leave the birds to live their own way — naturally.

Council's Manager Public Health Mark Saunders visits Greenmeadows Gardens to inspect dumped bread. Photo: Maureen Bathgate.

denvale Glen Huntly McKinnon Murrumbeena  
Caulfield Elsternwick Gardenvale  
Bentleigh East Carnegie Clayton  
St Kilda East Bentleigh  
Murrumbeena Ormond  
Huntly McKinnon  
Elsternwick Gardenvale  
Carnegie Clayton  
Bentleigh East Ormond  
Kilmore  
Kilmore East

### Parenting talks

**Your child and diet**

Council invites local residents to attend an information sessions on dietary care for children. Dietitian Ingrid Phyland will be the guest speaker at the sessions.

**Date:** Thursday 5 June  
**Time:** 1.30pm to 2.30pm  
**Where:** Caulfield Maternal and Child Health Centre, Glen Eira Town Hall, Corner Glen Eira and Hawthorn Roads, Caulfield

**Contact:** 9524 3404

**Date:** Monday 23 June  
**Time:** 1.30pm to 2.30pm  
**Where:** Murrumbeena Maternal and Child Health Centre, 107 Murrumbeena Road, Murrumbeena

**Contact:** 9569 5700





# Language Line



## Муниципалитет добивается улучшения финансирования служб домашнего и общественного ухода

Муниципалитет Glen Eira и семь других муниципалитетов Мельбурна добиваются от федерального правительства и правительства штата Виктория увеличения финансирования служб домашнего и общественного ухода.

Муниципалитеты Glen Eira, Port Phillip, Yarra, Melbourne, Stonnington, Boroondara, Bayside и Kingston составляют так называемый *Inner Southern Metropolitan Mayors Forum*. На территории этих районов проживает в общей сложности 1 миллион человек.

Служба домашнего и общественного ухода - это совместная программа федерального правительства и правительства штата. Во всех других штатах Австралии подобные программы осуществляются правительством и общественными организациями. В штате Виктория муниципалитеты организуют большую часть услуг и финансируют 20% бюджета программы. Однако в последние несколько лет участие муниципалитетов в этой программе возросло, а доля федерального правительства и правительства штата уменьшилась.

В настоящее время около 4 000 жителей муниципалитета Glen Eira пользуются услугами

программы домашнего и общественного ухода, в том числе такими услугами, как уход на дому, личный уход, временный уход вне дома, доставка еды на дом, помощь по дому, социальная поддержка и развлечения для людей старшего возраста.

Снижение уровня финансирования со стороны федерального правительства и правительства штата привело к увеличению очереди на эти услуги.

320 жителей муниципалитета в настоящее время ожидают включения в программу домашнего и общественного ухода. Очередь организована с учетом состояния клиентов и индивидуальных потребностей в уходе.

Исполнительный директор муниципалитета Andrew Newton сказал, что муниципалитет делает все возможное, чтобы сократить время ожидания.

"С целью повышения эффективности отдел общественного ухода муниципалитета проводит обзор всех имеющихся в настоящее время клиентов, стандартизирует услуги, набирает дополнительный персонал и реорганизует работу отдела " сказал г-н Newton.

Более подробную информацию о программе домашнего и общественного ухода можно получить в муниципалитете по тел. 9524 3333.

## Il Comune fa pressione sui governi per avere un migliore finanziamento dell'assistenza domiciliare

Il Comune di Glen Eira assieme a sette altre amministrazioni comunali sta facendo pressione sui governi statali e federali per avere un aumento dei fondi stanziati a favore dell'assistenza domiciliare e comunitaria.

I Comuni di Glen Eira, Port Phillip, Yarra, Melbourne, Stonnington, Boroondara, Bayside e Kingston costituiscono il *Inner Southern Metropolitan Mayors Forum*, che rappresenta circa un milione di cittadini del Victoria.

Attualmente l'assistenza "Home and community care" (assistenza domiciliare e comunitaria) è un'iniziativa congiunta dei governi statale e federale. In tutti gli altri stati dell'Australia l'assistenza viene fornita da enti governativi o comunitari. Nel Victoria sono i Comuni, con un contributo del 20% della spesa, a fornire la maggior parte dei servizi. Purtroppo in questi ultimi anni il contributo economico dei Comuni è aumentato mentre quello dei governi statale e federale è diminuito.

Nel Comune di Glen Eira sono circa 4000 le

persone che usufruiscono dell'assistenza "home and community care", tra cui assistenza domiciliare, assistenza personale, assistenza sostitutiva ("respite"), la consegna dei pasti a domicilio, la manutenzione della casa, il sostegno sociale e la ricreazione per anziani.

La riduzione del finanziamento proveniente dai governi statale e federale ha visto crescere il numero di cittadini che deve aspettare in lista d'attesa per ricevere l'assistenza.

Le 320 persone attualmente sulla lista d'attesa verranno assistite secondo priorità basate sulla precarietà della salute e le altre esigenze assistenziali.

Il direttore dell'amministrazione comunale, Andrew Newton, ha detto che il Comune sta cercando di minimizzare l'effetto e la durata della lista d'attesa.

"Il reparto Community Care ha riveduto l'attuale clientela, ha standardizzato i livelli di servizio, ha assunto il numero necessario di addetti e ha ristrutturato il reparto per migliorare l'efficienza," ha affermato.

Per maggiori informazioni sull'assistenza domiciliare e comunitaria telefonare al Centro assistenza del Comune, 9524 3333.

## Η Δημαρχία ασκεί πιέσεις για ένα καλύτερο αποτέλεσμα στην οικιακή φροντίδα

Η Δημαρχία Δήμου Glen Eira και άλλες επτά δημαρχίες της Μεμβούρνης ασκούν πιέσεις στην Πολιτειακή και Ομοσπονδιακή Κυβέρνηση για να αυξήσουν τη χρηματοδότηση για τις υπηρεσίες οικιακής και κοινοτικής φροντίδας.

Οι δημαρχίες Glen Eira, Port Phillip, Yarra, Melbourne, Stonnington, Boroondara, Bayside και Kingston σχηματίζουν τον *Σύνδεσμο Δημάρχων Κεντρικών και Νοτίων Μητροπολιτικών Δήμων*, που εκπροσωπεί ένα εκατομμύριο κατοίκους της Βικτώριας.

Η οικιακή και κοινοτική φροντίδα είναι ένα κοινό πρόγραμμα της Πολιτειακής και Ομοσπονδιακής Κυβέρνησης. Σε όλες τις άλλες Πολιτείες παρέχεται από κυβερνητικές και κοινοτικές υπηρεσίες. Στη Βικτώρια, οι δημαρχίες παρέχουν τις περισσότερες υπηρεσίες και είχαν συμφωνήσει να συνεισφέρουν το 20% των δαπανών. Όμως, στα τελευταία χρόνια το ποσό που συνεισφέρουν οι δημαρχίες έχει αυξηθεί και η αναλογία της Πολιτειακής και Ομοσπονδιακής Κυβέρνησης έχει μειωθεί.

Περίπου 4.000 κάτοικοι του Glen Eira λαβαίνουν τώρα οικιακή και κοινοτική φροντίδα, που περιλαμβάνει οικιακή φροντίδα, προσωπική φροντίδα, φροντίδα ανάπαυλας, διανομή γευμάτων, οικιακή συντήρηση και κοινωνική υποστήριξη και ψυχαγωγία για ηλικιωμένους.

Η μείωση στη χρηματοδότηση από άλλες κρατικές πηγές είχε ως αποτέλεσμα ένας υψηλότερος αριθμός κατοίκων υποχρεώνεται να περιμένει περισσότερο για να λάβει υπηρεσίες.

Τα 320 άτομα που βρίσκονται τώρα στην κατάσταση αναμονής θα μπουν σε σειρά προτεραιότητας σύμφωνα με τις αδυναμίες τους και τις ανάγκες σε φροντίδα.

Ο Γενικός Διευθυντής της Δημαρχίας Andrew Newton είπε ότι η Δημαρχία έβαλε ως στόχο να ελαχιστοποιήσει τις συνέπειες και τη διάρκεια αναμονής.

"Η Μονάδα Κοινοτικής Φροντίδας επανεξετάζει τους τωρινούς πελάτες, τυποποιεί τα επίπεδα υπηρεσιών, προσλαμβάνει επαρκή αριθμό υπαλλήλων και αναβαθμίζει τη μονάδα για να βελτιωθεί η αποδοτικότητα", είπε.

Για περισσότερες πληροφορίες για τις υπηρεσίες οικιακής και κοινοτικής φροντίδας επικοινωνήστε με το Κέντρο Εξυπηρέτησης της Δημαρχίας στο 9524 3333.

## Help us to help people

- Do you enjoy people and are you a good listener?
- Do you believe access to information and to sources of assistance is important?
- Would you enjoy a brief training course?
- Could you spare half a day a week to work with a great bunch of people?

Contact Laurel Thompson at Community Information Glen Eira Inc. on 9524 3200.

## 市政府正在遊說，以爭取更多的家庭照料撥款

Glen Eira 市政府及墨爾本其他七個市政府正在對州和聯邦議員遊說，以爭取增加家庭和社區照料服務的撥款。

Glen Eira、Port Phillip、Yarra、Melbourne、Stonnington、Boroondara、Bayside 和 Kingston 等市政府組成了代表一百萬維州人的南內市區市長論壇 (*Inner Southern Metropolitan Mayors Forum*)。

家庭和社區照料服務為聯邦政府和州政府的聯合資助項目。在其他各州，這項服務由政府或社區機構提供。在維州，市政府提供其中大多數服務並同意承擔 20% 的開支。但是，近年來，市政府承擔的部分增加了，而聯邦政府和州政府的比例卻縮小了。

目前，大約 4,000 位 Glen Eira 市的居民在使用家庭和社區照料服務，其中包括家中照料、個人照料、緩解照料、送飯上門、房屋維修及老年人社會支持和娛樂。

各級政府的撥款減少導致更多的居民等待得到服務。

根據等候名單上人的年老虛弱程度和照料需求，有 320 人將需要優先考慮。

市政府總執行官 Andrew Newton 指出，市政府的目標是減少這種影響並縮短等候名單。

他說：“社區照料處已在復審現在的用戶，使服務標準化，招聘合適數量的員工，改組社區照料處以提高效率。”

欲知家庭和社區照料服務的詳情，請與市政府服務中心聯繫，電話 9524 3333。



# Residents to put recycling in the bag

The call is out for Glen Eira residents to help reduce the waste created by plastic shopping bags.

The use and disposal of plastic shopping bags is a universal problem, but the solution starts at home — and requires the help of all residents to reduce the plastic bags' impact on the environment.

Council's Waste Education Officer Ray Christy believes everyone has a part to play, starting by taking responsibility for their own plastic bag use.

"Each year Glen Eira residents use 375,000 plastic bags," he said.

"Most of these bags are discarded after only one use and can take up to 1,000 years to break down in the environment."

Mr Christy said plastic bags could have a devastating effect on the environment. If discarded incorrectly, plastic bags end up in the waterways — eventually making their way into the ocean.

"Marine life is the main victim of plastic bags. It has been estimated that over 100,000 birds, whales, seals and turtles worldwide are killed by plastic rubbish every year," Mr Christy said.

Mr Christy said residents could help reduce the use of plastic shopping bags either by using alternatives or reusing them for garbage.

"Council would really like residents to consciously think about the number of plastic bags they use when

shopping," he said.

"The greatest impact on reducing plastic bags is to avoid using them in the first place — there is no guarantee that the plastic bags will end up being recycled."

Council urges residents to consider using calico bags, string bags, baskets or boxes.

"Calico bags are becoming more popular as an alternative to plastic because they are much stronger and have a longer life," Mr Christy said.

There are other ways of reducing the impact of plastic bags in the environment. Mr Christy reports that most residents are now using plastic bags to discard their household waste.

"Using plastic bags as an alternative to garbage bags ensures they are disposed properly in landfill and don't end up being wind blown litter and eventually entering the waterways.



Caulfield South FoodWise Manager Jack Li and Council's Waste Education Officer Ray Christy demonstrate the plastic bag-free way to shop. Photo: Maureen Bathgate.

## Plastic bag reduction

- Be aware of the amount of plastic bags used and minimise use where possible
- Use calico bags, boxes, string bags or trolleys as an alternative
- Place plastic bags in the bin, or use them as bin liners, to ensure they end up in landfill

# Education breeds responsible pet owners

Council has received positive feedback from residents in support of its new approach to promoting responsible pet ownership.

Since February, Council's animal management team has implemented a number of new initiatives to educate pet owners and give warnings, before enforcing infringement notices for improper behaviour.

Council's Manager Civic Amenity Carl Russo said the initiatives were aimed at meeting the needs of pet owners and non-pet owners as well as satisfying the legislative requirements.

"Local Law officers are thinking outside the square to offer alternatives to pet owners and also use some unconventional ways of encouraging people to do the right thing," Mr Russo said.

Some initiatives already implemented by Council include offering an on-the-spot lead to dog owners so that they immediately comply with the law, offering a free bag of pet litter to cat owners for paying registration and providing pooch pouches to dog owners to remind them to carry bags to clean up after their dogs.

Other ongoing initiatives include officers attending local primary schools to talk about responsible pet ownership and safety around dogs, and regular community consultation and development of networks with community dog groups to develop appropriate policy and legislation for pet owners.

A street-to-door service that returns roaming registered dogs has replaced immediate dog impounding. This service can only be provided if the dog is displaying some form of identification, the owner is home to receive the animal and they are willing to pay the release fee.

Mr Russo said many dog owners had reported the new initiatives were a great way to educate residents about being responsible pet owners while also giving them a chance to do the right thing.

"We have 13,000 registered

dogs and 7,000 registered cats in Glen Eira to manage," he said.

"The animal management service is about providing encouragement and education of responsible pet ownership before giving fines to residents. Council's approach ensures a consistent and equitable move toward enforcement. We believe that we have reasonable laws that are reasonably enforced."



Council's Animal Management team is offering leads to dog owners whose pets are unleashed as a first time warning that it is an offence under Local Law. Pictured [from left] Caulfield dog owner Esther Sterenzon and her pet Floyd and Animal Management officer Kate Bell. Photo: Maureen Bathgate.

Kinnon Murrumbidgee Ormond St Kilda  
 Glen Huntly McKinnon  
 Caulfield Elsternwick Gardenvale  
 Bentleigh East Carnegie  
 St Kilda East Bentleigh  
 Murrumbidgee Ormond  
 Glen Huntly McKinnon  
 Elsternwick Gardenvale  
 Carnegie  
 Bentleigh East  
 Ormond  
 Kinnon  
 St Kilda

## Japanese exchange opportunity

**Delegation leader**

Council's Glen Eira-Ogaki Friendly Cities Advisory Committee invites adults who are either residents, ratepayers or teachers in the City of Glen Eira to lead a student delegation to Glen Eira's sister city, Ogaki in Japan.

Applicants should be aged 18 years or over, preferably speak Japanese or have contributed to the Friendly Cities relationship. The visit will be from 20 September 2003 to 30 September 2003 and will be funded by Council.

**Student exchange**

The Glen Eira-Ogaki Friendly Cities Advisory Committee invites students of years 9 – 11, whose parents are ratepayers or residents of the City of Glen Eira, to participate in a student exchange to Ogaki, Japan during the period of 20 September to 30 September 2003. The visit will be partially funded by a scholarship.

Applications close on Friday 25 July 2003. For more details contact Michelle on 9524 3225.

**City of GLEN EIRA**



# Helping the aged live i

## A service that *gives* and *receives*

Ralph Carpenter's life motto is to *live and smile*. To help achieve this he volunteers five and a half days each week to support the Glen Eira City Council's meals-on-wheels service.

At 85-years-old, Mr Carpenter has been a jockey — the passenger who delivers the meals to the client's door — for the meals-on-wheels service since his wife passed away seven years ago.

"When my wife died I really didn't want to be home alone," he said.

"I wanted to get out there and meet people so I answered an advertisement calling for meals-on-wheels volunteers."

The interaction between the volunteers and clients is one of the reasons meals-on-wheels driver Marlene Holden also answered a Council advertisement five years ago.

"We get to meet such a variety of people who become our friends," she said.

Mr Carpenter and Ms Holden are 'partners' each Thursday, an arrangement that could be set for at least another decade.

"I have a 10-year lease on Ralph because he is terrific and has so much energy," she said, "The jockey is the most important person in the team because they are the one who actually greet the clients. As a jockey, you don't get much better than Ralph."

One of Mr Carpenter's favourite clients is "80-and-a-bit" year old William "Billy" Conkey, and the feeling is mutual.

"He (Ralph) comes bursting in here with my meals," Mr Conkey said.

"He's just a really bright character. All the volunteers are polite but Ralph is just really bright."

While Mr Carpenter does not entertain Mr Conkey with his repertoire of songs as some clients are privy to, he has been known to regularly call "*Rapunzal, Rapunzal let down your golden hair*" from the ground



[Right-Left] Volunteers Marlene Holden and Ralph Carpenter and Meals-on-Wheels client William Conkey have become great friends through the Council-delivered service.

Photo: Les O'Rourke.

floor of Mr Conkey's Carnegie apartment building.

Mr Carpenter and Mr Conkey are great mates, the two stopping to chat and engage in some friendly banter, as meals are handed-over.

Like many clients, Mr Conkey has very specific dietary requirements that are taken into consideration by Council.

The service employs a diet monitor to assist clients with special needs, catering for recipients requiring meals that are reduced fat, diabetic, bland, soft or vitamised. Residents' likes and dislikes are also taken into consideration whenever possible.

Council's Director Community Services Peter Jones said meals-on-wheels was a vital community service not only for the delivery of food but also because in some cases it was the only human contact a recipient had all day.

"Our service is to support and enhance the health, wellbeing, independence and quality of life of residents who are aged, frail and with disabilities by providing nutritionally balanced and appetising meals," he said.

Every day 32 meals-on-wheels volunteers — 16 jockeys and 16 drivers — deliver 80–100 hot meals and 280–300 chilled meals.

In total Council has about 90 meals-on-wheels volunteers who work between Monday and Friday. Another 30 volunteers help out on weekends. The amount of time individual's volunteer varies between one day per month and five days per week.

"Any amount of time a volunteer can spare is invaluable to us," Mr Jones said, "At the moment the service is quite desperate for weekend volunteers."

People interested in becoming a volunteer can contact Council's Service Centre on 9524 3333. After discussing the prospect of volunteer work with the food services distribution coordinator, a trial day will be included on the roster.

New volunteers are given verbal training in occupational health and safety issues, including food handling and delivery. Volunteers taking a driving role are required to use their own car, however petrol usage is reimbursed at \$6 per delivery round.

## Safe living in Glen Eira

A safety awareness program to be delivered to carers of isolated elderly people has been launched by Council in conjunction with the Metropolitan Fire and Emergency Services Board and Victoria Police.

The *Safe Living Program* will educate carers to be able to identify hazards in the homes of the residents they care for. The program will be jointly presented to carers by a fire fighter and police officer.

Carers have been identified as the best, and sometimes only, point of interaction for elderly residents who are considered a high-risk group when it comes to fire related deaths and injuries.

Commander of Community Safety, Southern Zone Command, Metropolitan Fire Brigade Colin Bibby said the overall aim of the program was to reduce the number of home fire and security problems experienced by older people.

"A pilot program was successfully undertaken with carers in the Glen Eira municipality and will now extend to other municipal areas of our community," Mr Bibby said.

Chair of Council's Community Safety Committee Cr Veronika Marens said that implementation of community safety initiatives was accepted as a joint responsibility of a local coalition of key stakeholders.

"This is a partnership arrangement, with Glen Eira City Council acting to broker the partnerships, co-ordinate the efforts and drive the whole process," Cr Martens said.

Council established the Glen Eira Community Safety Committee in late 2000. The Committee reflects an integrated approach to community safety and crime prevention in Glen Eira. The Committee has representatives from Glen Eira City Council, Victoria Police, Department of Sustainability and Environment, VicRoads, Department of Human Services, Department of Education and the Metropolitan Fire Brigade.



Pictured left to right: Cr Veronika Martens, Colin Bibby, and Divisional Inspector Glen Eira Region 1 Victoria Police Inspector Greg Parr, Caulfield resident William Gostin and carer Henryk Szapirko attended the launch of the Safe Living Program.



# Independently

## Council lobbies for better deal on home care

Glen Eira City Council has joined seven other Melbourne councils to lobby the State and Federal governments to increase their funding for home and community care services, which assist older residents to remain living independently in their own homes.

Glen Eira, Port Phillip, Yarra, Melbourne, Stonnington, Boroondara, Bayside and Kingston councils constitute the *Inner Southern Metropolitan Mayors Forum*, which represents a million Victorians.

Home and community care is a joint Commonwealth and State governments program. In all other States it is delivered by government or community agencies. In Victoria, councils deliver most of the services and agreed to contribute 20 per cent of the cost. However, over the last few years the amount councils have contributed has risen and the Federal and State governments' proportions have decreased. In the 2002–03 financial year, Glen Eira City Council will contribute 29.54 per cent to the program, which equates to \$1.86 million.

About 4,000 Glen Eira residents currently access home and community care, which includes home care, personal care, respite care, delivered meals, home maintenance and older persons social support and recreation.

Council's Chief Executive Officer Andrew Newton said cost shifting was impacting dramatically on Council's delivery of home and community care services. He said as a result, increasing numbers of residents who need home care, personal care and respite care were having to wait for the service.

There are currently 320 people on the waiting list who will be prioritised according to their frailty and care needs.

Mr Newton said Council aimed to minimise the impact and length of the waiting list.

"Council has been reviewing existing clients, standardising service levels, recruiting adequate numbers of staff and restructuring its Community Care unit to improve efficiency," he said.

Glen Eira has one of the State's highest percentage of residents in the 70-plus age group and this will continue to accelerate over the next few years as the City's population ages, placing even more pressure on home care services.

"We have the age profile now that other communities will have in the future," Mr Newton said.

"Australia needs to provide for an older community — supporting people at home, among their family, friends and networks is better socially and financially because otherwise some residents will be unnecessarily forced into hospitals or nursing homes.

Mr Newton added that adequate funding for home care was a significantly cheaper option for State and Federal governments — and taxpayers.

"This is what we all pay our taxes for," he said.

"Adequate allocations of funding by State and Federal governments to home care programs will provide greater levels of support and a higher level of personal care such as showering and meal preparation."

Each year Council provides 63,000 hours of home care, 22,000 hours of personal care and 29,900 hours of respite care to residents. The meals-on-wheels program ensures the delivery of more than 135,000 meals, 30,354 hours of adult care is provided and 5,520 hours of home maintenance is supplied.

## Keeping homes maintained

There is common misconception among the community that Council's Home Maintenance Service only provides window cleaning

The Home Maintenance team can carry out many general home repairs for residents who are frail and people with a disability.

Home maintenance jobs include:

- Moving furniture
- Minor carpentry repairs to furniture, doors, windows, gates and fences
- Repairs to door and window locks
- Sinks unblocked and spouting cleaned
- Small unsafe over-hanging branches pruned
- Light globes changed
- Repair fuses
- Installation of smoke detectors and replacement of batteries
- Clean light fittings

For more information about Home Maintenance contact Council Service Centre on 9524 3333.



Council's Home Maintenance Officer Lindsay Robinson carries out general repairs at the home of a resident.

## Book worms receive door-to-door service



Sitting in her sunroom with a good book is Coral Hill's favourite hobby and Council's Home Library Service allows the Bentleigh resident to be indulged in a huge selection of stories that are delivered to her door.

The Home Library Service is co-ordinated through Bentleigh Library and is available to older residents and residents with a disability.

Mrs Hill requests large print or taped books, which are delivered once a month.

"The Home Library Service helps me to live independently in my own home," she said.

"I like being able to get the books and because of my arthritis I can't move around very well so this way I can stay home."

Mrs Hill receives 15 library items each month that are selected according to her profile or preferences by Council's Home Library Service coordinator Julie Thomas.

On registering for the service, each client completes a [Left-Right] Council's Home Library Service co-ordinator Julie Thomas and Bentleigh resident Coral Hill discuss the selection of large print books available for delivery to residents doors through the Home Library Service. Photo: Bernie Bickerton.

profile of the types of material they would like to receive and genres they prefer to read.

"Books are by far the most popular items requested and about 60 per cent of our clients ask for large print books," Ms Thomas said.

"The most popular books are romance family sagas and mystery novels," she said.

When it comes to preferences Mrs Hill shares the popular view of requesting romance and mystery novels and Jackie Collins, Belva Plain and Daphne de Maurier are among her favourite authors.

In addition to large, ordinary and talking books, the Home Library Service will also deliver magazines, videos and CDs.

The Home Library Service currently brings resources from Council's Library and Information Service into the homes of 140 older residents and local people with disabilities.

"The service keeps our clients in touch with what is going on outside their home as well as the value of all the books and resources of the library," she said.

Acceptance to the Home Library Service is dependent on the availability of places.



# ARTS *Arts*

## Exhibitions

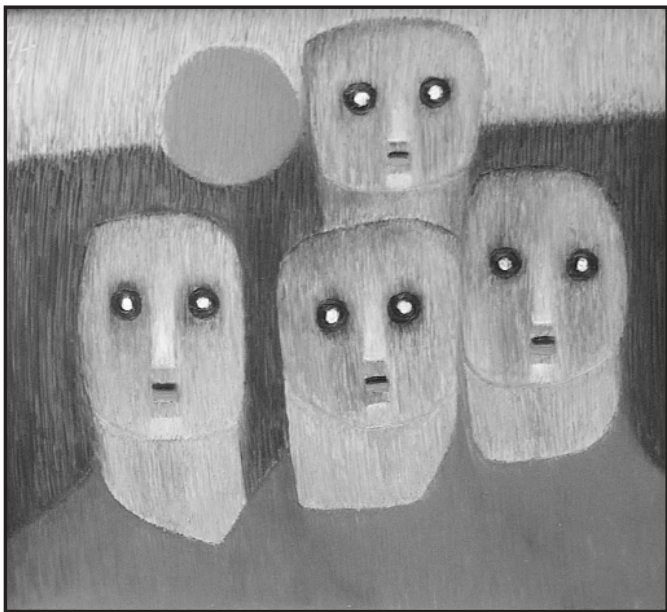
Glen Eira City Council Gallery  
corner Glen Eira and Hawthorn Roads, Caulfield  
Hours: Monday to Friday 10am–5pm  
Weekends and public holidays 1pm–5pm

### Merry Go Round in Colour and Shape by Alida Leereveld

Opening 3 June 6pm and continuing to 15 June

Alida Leereveld was born in Lara, a provincial town in Holland where her artistic career began with lessons in woodcarving. In 1956 Alida migrated to Hobart, Tasmania and studied painting and drawing under Archibald prizewinner Jack Carrington-Smith. To further her studies, Alida later moved to Melbourne to study under John Brack.

Glen Eira City Council Gallery's exhibition of Alida Leereveld's work is a profile of the artist's career, which was most prolific during the 1960s. On display will be oils, watercolours, charcoal and ceramics.



Artwork: Alida Leereveld

Alida is a strong believer that her audience should bring their own opinions and feelings to her work, and is quite open to multiple interpretations and feelings, which the viewer may interpret in her pictures. Her bold brushstrokes are full of life and possess a sincerity of vision.

### Next Year in Jerusalem by Joseph Edelman

To be opened by  
Mr Jack  
Smorgan AM,  
Chairman and  
President of the  
United Israel  
Appeal on 4  
June 7pm and  
continues to 15  
June

Joseph Edelman has always had a driving passion for the arts, which has withstood many an impasse. His father had disdain for his incessant 'scribblings' as a five-year-old, and he struggled to survive as a young artist in Russia during a period in which artists were inhibited in their practice.

Joseph continued to work as an artist in Russia until 1978. On leaving his homeland he was allowed to take only 12 of his paintings at a cost to him that was worth three years wages.

Joseph's 2003 exhibition, mainly consisting of oil paintings, consists of four main themes — musicians, childhood memories, Australian and Russian landscapes and still life.

Joseph's painting style has a very strong sense of composition and light, and clearly reflects his interest in the illuminations of stained glass windows.

All proceeds from the Shalom Association-sponsored exhibition will be donated to the United Israel Appeal.



Artwork: Joseph Edelman — Silver Lining.

### Fetish —Timbuctoo to Tasmania 2003

Opening 18 June 6pm and continuing to 29 June

For those with a keen eye for unique artifacts, a love of ethnicity or a passion for travel, this exhibition is the ultimate treat — one of Australia's largest collections of tribal artifacts on sale to the public. Brought to Glen Eira City Council Gallery by Sidewalk Gallery in Tasmania, this annual display of exotic artifacts will focus particularly on the fetish — an inanimate object believed to possess some form of supernatural power.

Sometimes the object may be natural, as in a rock, hair or animal claw, or it may be handmade, such as wooden carvings. The fetish draws its power from an inherent will, which the object is perceived to possess, or from the belief that a god dwells within the object.

This year along with the fetish, helmets, masks, drums and stools from the Congo will be displayed, filling the Gallery with vibrant colours and scents from the African continent. These beautifully hand-crafted objects reflect the stories and past-times of the people who made them. This is a rare opportunity to purchase museum quality artifacts and jewellery.



Samples of artwork from the Fetish collection.

## Get into the *swing* of winter



John Montesante's Café Society Orchestra's 20-piece swing band will kick off Council's 2003 Winter Music Series

Council's Winter Music Series kicks off with John Montesante's Café Society Orchestra — a 20 piece swing band that recreates the style and opulence of bygone eras.

The band pays tribute to many of the great names of the late 1930s through to 1960 such as Duke Ellington, Count Basie, Dizzy Gillespie, Glenn Miller, Stan Kenton, Tommy Dorsey, Ella Fitzgerald, Billie Holiday, Frank Sinatra, Sammy Nestico, The Andrews Sisters, Nat King Cole and Ray Charles.

Dressed impeccably and seated behind period music stands of the era, John Montesante's Café Society Orchestra has enchanted music loving audiences for more than two decades. The orchestra began performing at the Tuxedo High Society nights held at Inflation nightclub in King Street, Melbourne, and moved to the Metro Nightclub in Bourke Street in the 1990s. The band has also appeared at various prestige events held at the Hyatt Hotel, Crown Casino and outdoor festivals for the Melbourne Zoo and Twilight Rhythms concerts for the City of Melbourne.

Café Society Orchestra will perform in a cabaret style setting and encourage guests to wear their dancing shoes.

The concert will be held on Sunday 6 July in the Glen Eira Town Hall Auditorium, corner Glen Eira and Hawthorn Roads, Glen Eira.

Tickets can be purchased from Council's Service Centre for a cost of \$25 and \$20 for concession holders. For further details and to make phone bookings call 9524 3333.

Upcoming dates for the Winter Music Series:

Sunday 27 July	Klezmania
Sunday 12 August	Kenny Lopez and Havana Connections
Sunday 31 August	Combo Fiasco



# LIBRARY News

## An evening with authors

The Glen Eira Library and Information Service will host an evening about writing and life experiences with popular author Joy Dettman and writer/actress Jane Clifton on Friday 20 June.

Joy Dettman, author of *Mallawindy*, *Yesterday's Dust*, *Goose Girl* and *Jacaranda Blue*, will talk about her soon to be released book *Henry's Daughter*.

Jane Clifton, well known for her role as Margo in the long running TV show *Prisoner* and her recent stage performance in *Mum's the Word*, has added writing to her career talents releasing her first book *Half Past Dead* last year.

This event is part of the Victorian Public Library Network's initiative *Writers on the Road* and the Victorian Premier's Literary Awards.

The evening with the authors will be held in the Caulfield Cup Room, Glen Eira Town Hall, corner Glen Eira and Hawthorn Roads, Caulfield. There is no cost to attend but bookings are essential and can be made by calling Council's Service Centre on 9524 3333. Refreshments will be served from 7pm with the talk starting at 7.30pm.

## Accreditation where credit's due

After nearly 12 months of hard work from caregivers and staff, Council's family day care service has been accredited with high ratings in 28 of 32 categories.

Accreditation, as set by the National Childcare Accreditation Council (NCAC), is compulsory. Family Day Care Quality Assurance for family day care was introduced on 1 July 2001.

The accreditation process aims to ensure that children in care have stimulating, positive experiences and interactions that nurture all aspects of their development. Family day care does this by defining quality child care, providing ways to measure the quality of care provided and identifying areas for ongoing quality improvement.

Caregivers and staff worked steadily for nearly 12 months to achieve accreditation, participating in a self study, validation surveys, validation reports and moderation as part of the process.

The validation report and moderation rating received from the NCAC showed an achievement of good quality in four categories and high quality in 28 categories. These categories included: children's experiences, learning and development; health, hygiene, nutrition, safety and wellbeing; and carers and co-ordination unit staff.

Quality assurance is an ongoing process. As part of the process, Council's family day care service has committed to an improvement plan, with the next self study from the scheme due in 2005.

## Waiting for Harry

Many local Harry Potter enthusiasts are not leaving anything to chance when it comes to getting their hands on the next instalment of the popular series, reserving a copy of book number five at Glen Eira's libraries months ahead of its release date.

The much-anticipated fifth book in J.K. Rowling's thrilling series of Harry Potter adventures is due for release on 21 June and has ordered multiple copies to be shared between its four libraries.

About 30 library members have reserved *Harry Potter and the Order of the Phoenix*, the latest book in the bestselling series about boy wizard Harry and his adventures at Hogwarts School of Witchcraft and Wizardry.

The 896-page novel is the fifth volume in the Harry Potter series that follows the first four titles: *Harry Potter and the Philosopher's Stone*; *Harry Potter and the*

*Chamber of Secrets*; *Harry Potter and the Prisoner of Azkaban*; and *Harry Potter and the Goblet of Fire*, which are all available for loan at Council's libraries.



Harry Potter enthusiasts Amy and Ben of Caulfield East are eagerly awaiting the fifth book in the Harry Potter series *Harry Potter and the Order of the Phoenix* to arrive at Glen Eira libraries.  
Photo: Maureen Bathgate.

## Teddy's enjoy their big day out

As part of Council's Library and Information Services' school holiday program, the Elsternwick Library hosted a Teddy Bear's Picnic in April.

Nearly 30 children brought along their favourite stuffed friends for an afternoon of singing, games and activities.

Starfish, a performance duo made up of characters Fish and Star Fairy, led the entertainment program that was full of audience participation.

The audience sang along with Star Fairy to the original 1930's version of the song *Teddy Bears' Picnic*, which was accompanied by Fish on the electric keyboard.

The bears competed in the Teddy Bears Olympic Games, which included a long jump activity, and a fashion parade that showed off the variety of bears in the audience.

## Success, fulfilment and balance

Council's next Women's Business Network meeting will provide local business women with unique tools for gaining clarity in their lives, achieving goals and turning dreams into reality.

Presented by founder and managing director of Clarity Now Dr Sharon Orrman-Rossiter, the subject of *Creating Success, Fulfilment and Balance in Your Life* will be discussed at the Glen Eira Town Hall on Thursday 19 June starting at 7pm. Cost is \$10.

In 2000, Dr Ormann-Rossiter was a finalist in the Telstra Business Women's Awards and was nominated for the 2001 Hall of Fame for the Australian Business Women's Network.

Women's Business Network meets on the third Thursday of each month. People wishing to attend should call the Council Service Centre on 9524 3333 to register their interest.



Local teddies enjoyed a picnic at Elsternwick library that included a fashion parade, olympic games challenge and singing.  
Photo: Bernie Bickerton.

## Bentleigh Traders Association Black Cat Sale

Location: Shopping strip at Centre Road, Bentleigh

Date: Friday 13 June

Time: 11am to 2pm

Items from various traders of the shopping strip will be offered at substantial discounts over the three hour sale. Contact Richard Atkinson on 0418 175 736 for more information.





# COMMUNITY *Diary*

## Meetings and clubs

**Ormond Seniors Club** meets at 2 Newham Grove, Ormond for bowls, table tennis and cards. All welcome. Contact: 9578 7653.

**Over 40s Club** dance — all ages — old time, modern, new vogue at Ormond Uniting Church, corner North and Booran Roads, Ormond, on second and fourth Saturdays of each month at 7.45pm. Supper and live music. Cost: \$7. Contact: 9570 4564.

**East Bentleigh Senior Citizens Club** will hold line dancing classes at East Bentleigh Senior Citizens club rooms, 1 Derry Street Bentleigh East every Thursday afternoon at 1pm. Cost: \$2.50 includes afternoon tea of coffee. Contact: 9579 4573.

**Club 66** holds old time, modern, new vogue dances with live band at Bentleigh Uniting Church Hall, Centre Road, Bentleigh (opposite RSL), on the first and third Saturday of each month at 8pm. All ages welcome. Cost: \$6. Contact: Margaret 9587 1092.

**Young Mothers' Group** for mothers up to 25 years old meets at Bentleigh Bayside Community Health Service, Gardeners Road, Bentleigh East on Thursdays from 10am to 12noon. Free childcare available. Contact: Denise 9575 5349.

**Caulfield Life Activities Club** will meet at Gladys Machin Hall, Cedar Street, Caulfield, on Wednesday 18 June at 7.30pm. Guest speaker. Supper served. New members welcome. Contact: 9568 5849.

**Bentleigh Life Activites Club** offers opportunities to meet new friends and enjoy social activities such as carpet bowls, table tennis, scrabble, solo, canasta, rummy tiles, music, craft, golf, armchair travel and theatre outings. New members very welcome. Contact: 9557 2562.

**Lupus–Sjogrens–Fibromyalgia support group** patients, families and friends welcome to meet fourth Sunday of each month in Glen Eira area. Next meeting on Sunday 22 June. For location and details contact: 9509 2735.

**Glen Eira Combined Probus Club Inc.** meets at the Bentleigh Club, Yawla Street, Bentleigh on the fourth Friday of the month at 10am. Contact: Michael 9509 5387.

## Events

**Glen Eira City Choir** will hold a performance at the Uniting Church, Oxley Road, Hawthorn on Sunday 1 June at 2.30pm. Cost: \$22/\$18 concession. Contact: 9502 7707.

**Music Lovers' Society** will hold a classical concert at St Paul's Anglican Church, 530 Dandenong Road, Caulfield North (opposite Glenferrie Road) on Saturday 21 June at 8pm. Cost: \$15, seniors \$12, pensioners \$9, students \$6, family \$35 members free. Contact: 9822 7292 or 9571 0850.

**St Mary's Anglican Hall Group** will hold a talk on Netsuke, a type of wood carving at St Mary's Anglican Hall, 281 Glen Eira Road, Caulfield North on Tuesday 3 June at 1.45pm. Cost: \$5 donation. Contact: Shirley 9523 9774 or Alma 9572 5445.

**The National Trust Mansion Labassa** will hold an open day at 2 Manor Grove, Caulfield North, on Sunday 29 June. Labassa is one of the jewels in the crown of the Victorian National Trust, especially famous for its lavish style and ornate decoration. Entry: \$5.50/\$7.70/\$19.80. Contact: 9527 6295.

*Deadline for next Community Diary is Wednesday 4 June for publication 4–6 July*

## Volunteers needed — training provided

The Glen Eira Volunteer Resource Service has a list of over 150 local organisations currently seeking volunteers to support people with disabilities in the community, or to teach English to new migrants.

To discover the possibilities visit the  
**Glen Eira Volunteer Resource Service**

at Oak Tree House,  
256 Hawthorn Rd, Caulfield  
or phone 9524 3200.

A free information session for people wanting to volunteer, will be held on

**Wednesday 6 August (morning)**  
**and Tuesday 7 October (evening).**

These training sessions would also be useful to people who are already working as volunteers. They cover issues such as privacy, rights and responsibilities, roles of volunteers and legal considerations.

**For more information,  
contact Angela on 9534 3303.**

**JUDO** **YAMADA JUDO ACADEMY**  
Caulfield Recreation Centre  
6 Maple St, Caulfield South  
**9578 4460**

**Self defence, Concentration,  
Discipline, Co-ordination, Self-esteem,  
Enjoyment, Stress Release**  
BEGINNERS TO BLACK BELT – From 4 years old

## Anthony's Conveyancing

Buying or selling. Houses or land  
(solicitor supervised)

Phone 9571 1073 anytime

Open till 7pm weekdays  
(By appointment weekends)

77 Grange Road, Glen Huntly 3163  
(Corner Neerim Road)

*It's a world of computer experience*



**Nucleus Computer Services Pty Ltd**

• Hardware and software repairs to all computers, monitors, printers and notebooks.

**NEED IT FIXED?**

On site or in our workshop.

**NETWORK, INTERNET  
and VIRUS SUPPORT**

• Accessories, parts, cables, fans, print cartridges available.

**24 HOURS — 7 DAYS**

Call now for prompt and reliable service

**9569 1388**

www.nucleuscomputer.com.au  
9b Morton Ave, Carnegie 3163

## Broken Cords or Balances

**IN DOUBLE HUNG WINDOWS**

- ◆ Bottom sash (2 cords) from \$40
- ◆ Both sashes (4 cords) from \$50
- ◆ Tubular balances from \$55 per pair
- ◆ Pensioner discounts available

Price depends on size, condition and number

- Also
- ◆ Fit heavier counter weights
  - ◆ Convert concealed to tubular balances

**John Moline:  
9822 3470 AH**

*Cut out this ad and keep for future reference*

## GLEN EIRA 2003 BUS TRIPS

**Low budget bus trips travelling with an accredited company organised by volunteers for you.**

**Wednesday 4 June, 9.00am–4.30pm (approx.)**  
WOODEND, TRENTHAM AND DAYLESFORD

The Calder Highway takes us via Gisborne to Woodend for morning tea and then we cross the hills through Trentham to Daylesford where the various shops and boutiques always have things of interest. Bring your own lunch or buy. In the afternoon we call at the Convent Gallery (own cost) before returning along the Western Highway. Cost: \$25

**Wednesday 9 July, 10am–4pm (approx.)**  
CHRISTMAS IN JULY AT THE CUCKOO

At 'the Cuckoo' in Olinda you will find the best of smorgasboards and the best of entertainment. Any further comment is not necessary. Full payment must be made by Tuesday 1 July. Cost: \$40 (does not include drinks)

**Wednesday 13 August, 9am–5.15pm**  
DAFFODILS IN WARRAGUL

August is Daffodil time and Western Gippsland is the place to find them. Today we travel to Warragul where there is time to visit Glengarry Knitting Mills who make excellent knitted garments for men and ladies. Bring or buy your own lunch. There will be the opportunity to buy blooms. Cost: \$25

Air conditioned coaches depart from Glen Eira Town Hall and 10 minutes later from Glen Huntly Station (Tram Stop 60).

**Bookings: BY PHONE OR MAIL 9720 5677 9am–2pm**  
**Glen Eira 2003, PO BOX 221, NUNAWADING 3131**

## Glen Huntly Friendship Group

99 Grange Road, Glen Huntly

**Activities for June**

**Enquiries and bookings**  
**Margaret 9596 6124**

**Thursday 12 June**

Not to be missed. Lyn Poulson with her 'Hearing Dog'. Lyn has a profound hearing loss and will introduce us to the wonder of these very 'special' dogs at 99 Grange Road, Glen Huntly at 10am. Donation: \$2.50

**Thursday 26 June**

Bus trip through the 'Valley of the Arts', located in Melbourne's lush outer north-eastern area, visiting Eltham, Warrandyte and Templestowe. Depart 9.15am from 99 Grange Road, Glen Huntly and 9.30am from 185 Poath Road, Hughesdale. Cost: \$30 includes lunch.



**KILVINGTON**  
GIRLS' GRAMMAR

This year Kilvington proudly celebrates eighty years of education and a number of special events are being held.

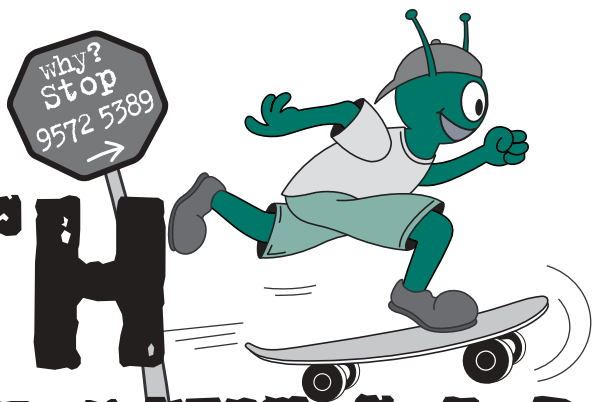
On 19 June we welcome past parents who have served Kilvington on groups or committees to a reunion between 10.30am and 12.30pm. Registration of interest must be received by 7th June.

Please contact Judy Allen  
(Thursdays or Fridays) on 9578 6231  
or email allenj@kilvington.vic.edu.au

**Kilvington Girls' Grammar**  
2 Leila Rd, Ormond 3204



# GLEN EIRA YOUTH NEWS



The **Why? Stop** Youth Information Centre provides free, friendly and confidential support to young people. Find out more about what Council's youth centre has to offer — drop in and meet the youth workers at 54 Rosstown Road, Carnegie (near Carnegie train station).  
Phone: 9572 5389  
email: [ystop@gleneira.vic.gov.au](mailto:ystop@gleneira.vic.gov.au)

## Wildcats *on a roll*

The Why Stop Wildcats basketball team has got off to a flying start this season, winning all five graded games.

After narrowly missing out on the summer 2002–03 trophy, the Wildcats have proven that even during close matches they have the skill to hold-on and win.

The team was down 8–22 at half time during the first round match against competitors No Hope but fought back to prevail 28–27 and prove they were never out of the contest.

Another thrilling game was played against the Warriors in round three when the Wildcats were down by one point with eight seconds to go.



A side ball possession in defense saw the Wildcats skillfully deliver the ball to the end of the court and score. The result — a one point win.

For people wanting to support one of the competition's top sides, the Wildcats play at Oakleigh Recreation Centre every Monday night. For details about playing times contact the Why? Stop Youth Information Centre.

*The Why Stop basketball team are on a winning streak, defeating its first five rivals to become one of the competitions top performers.*

## The out-of-class clown

Some young people like to live school holidays on the edge, even if that means learning to walk the tightrope.

During the April school holidays, Council moved its *Flying High Circus* program out of the classroom and into the community by running a two-day clowning workshop.



*Nineteen Glen Eira young people spent the school holidays clowning around by taking part in the Why Stop circus program.*

The workshop, which was held at the Bentleigh McKinnon Youth Centre in Bentleigh covered all aspects of clowning including physical theatre, mime, acrobalance, facial expression and improvisation. In addition participants learnt the fine art of juggling, walking a three metre tightrope, diabolo and plate spinning.

Many of the 19 young people who participated had never met each other but it didn't take long before they became juggling partners, human pyramids and slapstick comedy duos.

A circus performance at the end of the workshop showed the skills and self-confidence that developed over the two days.



**Emmanuel Calisthenics Inc**

A0020423J

FUN & FRIENDSHIP!



1st Class FREE!!

*Committed to fun quality calisthenics for all*

New members welcome!

Phone: Donna 95576727

## Take action for Drug Action Week

Drug and alcohol awareness is one of the prime issues of importance that has been raised by local young people during events, workshops and programs organised by Council's Youth Services team this year.

The team is joining Taskforce Community Agency which is currently forming a combined working party to provide activities that will increase young people's awareness, understanding and support networks for alcohol and drug issues.

On a State level, the Victorian Alcohol And Drug Association has bookmarked June 23–28 as Drug Action Week. This annual event focuses specifically on drug and alcohol education and awareness needs of the community.

Council's Manager Children, Youth, Family Support Marg Sullivan said issues surrounding alcohol and other drugs affect many young people either through personal or associated use.

"Drug Action Awareness week is an opportunity for us all to address these issues and take action," she said.

For further information about how to get involved in Drug Action Week and events that are currently running, please contact the Why? Stop Youth Information Centre.

## Awards for excellence!

Glen Eira residents aged 10–25 years who possess outstanding skills in the fields of creative and performing arts, education, leadership or sport are invited to apply for financial awards through the Foundation For Youth Excellence program.

Allocations of awards are funded at different amounts on state, national and international levels.

Application forms and brochures are available by calling Council's Service Centre on 9524 3333.

## SINGDANCEPLAY

studio in Caulfield  
offers FREE introductory sessions to parents with babies, toddlers and/or preschoolers.

To book your session  
please call Ellina on 9523 9793.



# Recreation News

## The jewel of the north

What was once a cow paddock, Greenmeadows Gardens is known to many locals as a jewel set in the north of Glen Eira.

Purchased by Council for £1,450 in 1912, Greenmeadows Gardens in St Kilda East was established as a park between Federation and World War 1.

During this period in Australian history, there was pressure from sports clubs to establish facilities in Council-owned parks. Many proposals were rejected, including one to establish a tennis court, and to this day the gardens remain a sports-free park.

The layout of Greenmeadows Gardens remains largely as it was established, however improvements

such as the installation of a playground, pathways and garden beds have been made.

Greenmeadows Gardens is located in Green Street St Kilda East (Mel ref: 58 G12).

*Greenmeadows Gardens is a relaxing escape for people wishing to picnic, take a walk or just sit back under the shade of a willow tree.*



## School holiday respite

July school holidays are just around the corner and for parents of children and teenagers with disabilities a program co-ordinated by the Joint Councils Access for All Abilities program may be a suitable vacation care option.

The Joint Council's Access for All Abilities *Enhancing Vacation Care* project works in partnership with mainstream vacation care programs to provide respite for parents and an exciting choice of activities for participants. The program organises recreation

activities for young people with disabilities aged 5–18 who live within Glen Eira, Bayside, Stonnington and Port Phillip municipalities.

Joint Council's Access for All Abilities project officer Fiona Allan said the project provided an excellent respite option during the school holidays for parents and carers.

"*Enhancing Vacation Care* is an excellent respite option for parents and provides an inclusive and enjoyable recreation activity program for participants," she said.

Vacation care providers are provided with support to enhance their capacity to include children and teenagers with disabilities into their programs.

*Enhancing Vacation Care* is managed by Joint Council's Access for All Abilities and funded by the Department of Human Services, Southern Metropolitan Region's GreatBreak initiative.

For further information contact Joint Council's Access for All Abilities project officer Fiona Allan on 9209 6159.

*Children and teenagers with a disability can spend their school holidays enjoying recreation activities through the Enhancing Vacation Care program.*



## Show me the money!

Applying for grants can open up new funding opportunities for local sports associations in need of an extra dollar to assist in the development of their club.

Information about funding grants available for local sporting clubs can be found on Council's website — [www.gleneira.vic.gov.au](http://www.gleneira.vic.gov.au)

## Reliving a 19th century dream

The Rosstown Rail Trail may be the result of a 19th Century dream that never came true, but, among many residents and visitors to Glen Eira, retracing the historic sites is as popular as ever.

The Rosstown Rail Trail allows history lovers to visit the construction sites of entrepreneur William Ross' railway line and eight-storey factory. Neither of these 1880s constructions were ever used.



*The Rosstown Rail Trail has proven to be a hit among local residents.*

Today, while nothing remains of this grand scheme, people can walk, drive or cycle the route guided by signs, plaques and a brochure. The route, which starts at Elsternwick Plaza on Glenhuntly Road, Elsternwick, follows local streets and linear parks. To walk the complete trail, people will need to allow about three and a half hours.

The Rosstown Rail Trail brochure, which has recently been reprinted due to popular demand, is available from Council's Service Centre. It is also available under the recreation page on Council's website [www.gleneira.vic.gov.au](http://www.gleneira.vic.gov.au) and the trails starting point in Elsternwick Plaza.



**GYMBAROO**  
4 MTHS TO SCHOOL YEARS

**COME AND ENJOY OUR:**

- Specialised equipment •
  - Structured program •
  - Climbing, rolling, balancing & jumping •
  - Songs, dance and rhythm •
  - Ample & traffic free parking
- Operates: Tues, Wed, Thur & Sat

Uniting Church

29 East Boundary Road, Bentleigh East  
**TELEPHONE GAIL 9570 1422**