

**Volume 63 — June 2002**

Glen Eira City Council corner Hawthorn and Glen Eira Roads, Caulfield.  
Phone: 9524 3333 Fax: 9523 0339 Email: mail@gleneira.vic.gov.au Website: www.gleneira.vic.gov.au

## Infrastructure — it's all about pipes and paving



New drainage pipes are installed at the corner of Koornang and Leila Roads, Carnegie — in preparation for the installation of a roundabout as part of the Blackspot program.  
Photo: Myrine Hawksworth

Council will have spent \$3.7 million on major road and drainage projects for the financial year ending 30 June, 2002.

Projects mostly consisted of kerb and channel reconstruction and asphalt resurfacing of the road pavement, but underground pipe replacement and

drainage system improvements were also part of the program.

Acting Director Infrastructure Kerry Martin said the need for reconstruction works was brought about by gradual deterioration of the City's roads over time.

"Kerbs become displaced, and cause problems with drainage and difficulties for residents accessing their properties. It's inevitable that road pavements wear out and deform, and this produces rough surfaces and cracks. Once the surface is cracked, rain water is able to enter the pavement base, which causes further deterioration," he said.

### Computer management system

Mr Martin said a computer-based pavement management system, which takes into account all factors affecting the condition of the road, produced a listing of roads rated in order of condition. Reconstruction projects were then ranked and selected on the basis of that information.

"Each of the streets in the City is inspected on a regular basis and the condition of the kerb and channel, the road surface and the pavement are assessed against set criteria," he said.

Drainage projects are selected on the basis of a comprehensive survey and assessment undertaken by specialists in 1996. The survey examined the capacity and condition of the existing drainage system and made recommendations on priority works that needed to be carried out to reduce the risk of flood damage to properties in the City.

"Any major works are going to cause some disruption and inconvenience to residents, but Council makes every effort to keep this to a minimum. Residents can assist by observing roadworks signs and directions from workers on site. We plan for any disruptions to be short-term and, of course, the end result of better roads and drainage systems will be worth the minor inconvenience," Mr Martin said.

## Better, quicker town planning

### — Glen Eira City Council leads the way

Council is leading the way in town planning decision-making reform with its pilot program for pre-lodgement and certification of planning applications.

The pre-lodgement program offers developers the option to lodge application material which has already undergone a process of assessment and certification — streamlining the application process.

Group Manager Statutory Services Duncan Turner said all metropolitan planning offices had been clogged with applications over recent years — including Glen Eira City Council. "At best the process of obtaining a planning permit in Melbourne would be described as very slow."

He said: "At the moment our system is clogged with proposals that either lack the level of information required or don't conform to Council or State planning policies. In the past, half-baked proposals have been lodged with Council with an expectation from applicants that the planning system and Council planning officers will massage their proposal into something acceptable. The system can no longer cope with these expectations."

"The challenge for the planning system is how best to cope with an environment of increased workloads, and

public participation, a shortage of planners, increasingly dependent applicants and competing demands on local government planners," Mr Turner said.

The innovative pre-certification concept was proposed in direct response to these challenges, aiming to improve the standard of applications before they are actually lodged with Council. The process requires that, before lodgement with Council, applicants have conducted pre-application meetings with immediate neighbours and a Council planning officer and had their proposal and documentation independently checked by qualified planning consultants to ensure it meets information requirements and planning policies.

*Continued page 7*

### Did you know?

Glen Eira's drains, if laid in a straight line, would reach to

- a. Tullamarine
- b. Bendigo
- c. Ararat
- d. Swan Hill

See page 7 for the answer

## Inside

### News

Volunteer Recognition Scheme	3
Property revaluations	3
Boyd Park grant	5
Powerline clearance	5

### Features:

Town planning changes	6-7
-----------------------	-----

### Regulars:

Language Line	4
Arts	8
Community Diary	10
Youth News	11
Recreation News	12



# MAYOR'S column



Last month, Council marked National Volunteers week with the holding of the Volunteer Recognition Scheme ceremony in the Auditorium at the Town Hall. This ceremony, hosted by Council, means so much to many people throughout our City. It

is a ceremony that celebrates the thriving spirit of volunteerism in our community and gives our City the opportunity to formally recognise the valuable and important work that volunteers perform.

The Auditorium was packed for the ceremony at which 121 of the 172 nominated volunteers received their awards. They were from 40 different organisations and were acknowledged thus: 42 for contributing more than 500 hours of service, 51 for more than 1000 hours of service, or 49 for more than 2000 hours of service. A further 30 people were nominated in a special category which recognised 10 or more years of continuous service within an organisation.

Australia has one of the highest rates of volunteering in the world, almost three million people, and it is extremely pleasing to see that so many people from Glen Eira are making such a significant contribution to this proud record. Council's own *Friendly Cities Advisory Committee*, is a wonderful example of the contribution of volunteers towards making this City an even better place and I, for one, sincerely appreciate the work of those who so willingly give up their time.

Council is finalising the budget for 2002-03. As Council has been saying for a long time, our City is confronted with decaying and outdated community facilities and infrastructure and much work needs to be done to address this issue. This work requires funding and Council has sought to engage with the community on this matter.

In February, a public discussion document entitled *Community Assets — Financial Sustainability* was released, and posted on Council's website. There has been extensive media coverage in The Leader Group newspapers circulating throughout Glen Eira, highlighting the infrastructure issue and in April an independent public forum was organised by the Glen Eira Resident's Association. Following the forum, the Resident's Association stated its position to Council: "unanimity that we must find more money for the City and that the most sensible way to do this is through increased rates on property."

Rates are not an easy thing to understand, because they are calculated according to the value of your property relative to the value of everyone else's property. Rates distribute costs among us all, according to our property values. Rates are complicated even more by the State Government's

## Storytelling *inspires young artwork*

Emily (aged 3½) is pictured here practising her artistic skills as she colours in a flower after listening to a story at Bentleigh Library's Storytime recently.

About 50 kids, mums and dads enjoyed a morning of stories, singing, dancing and colouring in pictures. The children's attention was firmly focused on the magical storytelling techniques of librarians Marcia Baillie and Lisa Fay. After some colouring-in, it was time for everyone to select a book to borrow from the library and take home.

Bentleigh Library is host to Storytime every Monday at 2pm and Thursday at 11 am. Storytime is also available at Council's three other branches and has proven enormously popular for both children and parents.

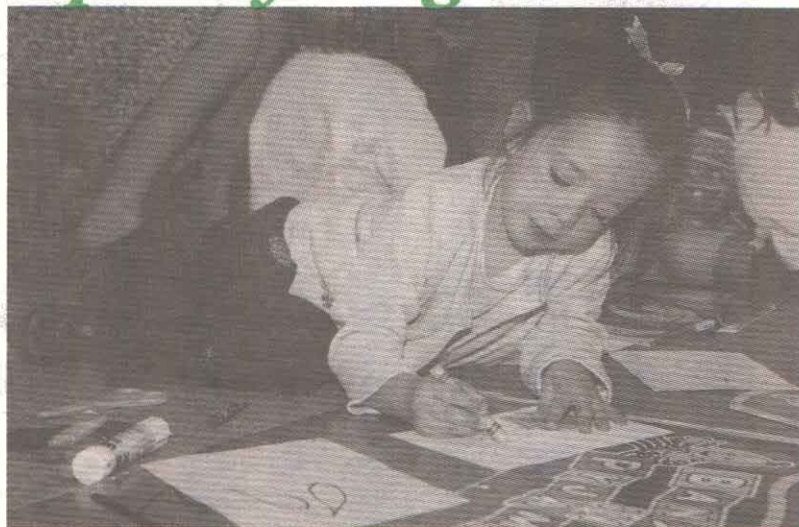


Photo: Bernie Bickerton.

requirement that all Councils must revalue every property in each municipality every two years. This means everyone's rates are likely to move around, depending on the relative movements in property values — and property values in Glen Eira are booming.

— Cr Peter Goudge  
Mayor

### Council meeting dates

Tuesday 11 June  
(Note: 10 June — Queen's Birthday holiday)  
Monday 1 July                      Monday 22 July  
Monday 12 August                Monday 2 September  
Monday 23 September          Monday 14 October  
Wednesday 6 November  
(Note: 5 November — Melbourne Cup holiday)  
Monday 25 November          Monday 16 December

All meetings held in the Council Chamber, corner Glen Eira and Hawthorn Roads, Caulfield at 7.30pm. All open to the public.

### Japanese exchange opportunity

The Glen Eira-Ogaki Friendly Cities Advisory Committee invites adults who are either a resident, ratepayer or teacher in the City of Glen Eira, to lead a student delegation to the City's sister city, Ogaki in Japan.

Applicants should be aged 18 years or over, preferably speak Japanese or have contributed to the Friendly Cities relationship. The visit will be from 29 September to 10 October and will be partially funded by a scholarship.

Applications close 28 June 2002.

For further information contact Michelle Hurd on 9524 3225.

City of  
GLEN  
EIRA

### Deadlines for Glen Eira News

Deadline for the next issue of Glen Eira News will be Tuesday 11 June. Delivery: 2-4 July.

#### Coming deadlines:

Monday 8 July. Delivery: 6-8 August.

Monday 12 August. Delivery: 3-5 September.

For advertising contact the PR Unit on 9524 3366.

To submit editorial material write to:  
Glen Eira News PO Box 42, Caulfield South 3162  
or email: editor@gleneira.vic.gov.au

## Councillor contacts

### JASPER WARD



Cr David Bloom  
Phone/Fax:  
9597 9825  
Mobile:  
0417 169 679



Cr Eamonn Walsh  
Phone/Fax:  
9597 9826  
Mobile:  
0417 314 233



Cr Rachelle Sapir  
Phone/Fax:  
9579 7218  
Mobile:  
0409 186 941

### MACKIE WARD



Cr Norman Kennedy  
Phone: 9564 8395  
Fax: 9564 8402  
Email: nkennedy@gleneira.vic.gov.au  
Mob: 0419 379 540



Cr Veronika Martens  
Phone: 9579 0297  
Fax: 9579 7072  
Mobile:  
0419 218 474



Cr Peter Goudge JP  
Phone: 9524 3225  
Fax: 9524 3358  
Mobile:  
0419 505 614

### ORRONG WARD



Cr Alan Grossbard JP  
Phone/Fax:  
9533 0052  
Mobile:  
0407 374 474



Cr Dorothy Marwick  
Phone/Fax:  
9596 1459  
Mobile:  
0417 398 250



Cr Noel Erlich  
Phone/Fax:  
9533 0054  
Mobile:  
0417 218 485

### GLEN EIRA CITY COUNCIL

PO Box 42 Caulfield South 3162 Phone: 9524 3333 TTY: 9524 3496 Fax: 9523 0339  
Email: mail@gleneira.vic.gov.au Website: www.gleneira.vic.gov.au

#### DISCLAIMER

The information in this publication is of a general nature. The articles contained herein are not intended to provide a complete discussion on each subject and/or issues canvassed. Glen Eira City Council does not accept any liability for any statements or any opinion, or for any errors or omissions contained herein.



# A night to acknowledge some special people

More than 170 Glen Eira people who work voluntarily for their community were acknowledged at this year's Volunteer Recognition Scheme ceremony.

The auditorium was filled with almost 400 people — volunteers and their guests — at the ceremony which was held during National Volunteers Week last month.

The nominations represented 40 different organisations, from community and health services, sporting and recreation groups, service clubs, senior citizens' groups, guides and scouts, churches and U3As.

Mayor Cr Peter Goudge presented awards to 121 volunteers who were able to attend the ceremony.

He said: "National Volunteers Week has become a rather special week in the life of Glen Eira. It is particularly special for us because each year we hold this ceremony — a ceremony to celebrate the thriving spirit of the very many members of our community who freely

give of their time to help others."

"Awards were given to 42 people for 500 hours of service, 51 people for 1000 hours of service, and 49 people for 2000 hours of service. Even without including the Special Category (for which 30 people received an award for having achieved 10 or more year of continuous service within an organisation) this represented 170,000 hours of community service over the past year," Cr Goudge said.

*Mayor Cr Peter Goudge presents volunteer Emilio Bini with a certificate acknowledging his 500 hours of volunteer service for U3A Glen Eira.*

*Caulfield Girl Guide volunteers serve supper to a guest at the Glen Eira Volunteer Recognition Scheme ceremony.  
Photos: David McArthur.*



## Planning Scheme amendments move forward

On Monday 29 April, Council considered reports on two amendments to the Glen Eira Planning Scheme, deciding to send both of them to an Independent Panel.

Amendment C14 is the Phoenix Precinct Policy which proposes to incorporate the Phoenix Precinct Urban Design Framework into the planning scheme as local policy. Council adopted the Framework Plan in August 1999 and a subsequent traffic study was conducted of the area. Key recommendations of the traffic report have also been incorporated into the policy.

Amendment C19 to the Glen Eira Planning Scheme is an amendment that proposes heritage controls over 64 individual properties. Council has decided to forward the amendment to the Minister for approval for properties that gained no opposition. However, Tudor Court (141 Kooyong Road) has been removed from the list. The remainder of the properties that did receive a submission will be referred to an Independent Panel.

Council will soon advise all submitters of its decision. When Council is advised of the panel appointments for the two hearings, submitters will be written to and given the opportunity to present before the Panel. Should residents have any queries in relation to these amendments, they can contact Council's Strategic Planning Department on 9524 3333.



*Derby Road Shopping Centre.*

### Call for Community Grant applications

Non-profit community organisations and groups in Glen Eira are invited to apply for funds through Council's Community Grants program.

An information package which includes application forms is available from the Service Centre or by calling 9524 3333.

Information is also available on Council's website: [www.gleneira.vic.gov.au](http://www.gleneira.vic.gov.au)

Applications close on Friday 28 June at 5pm. (Late applications cannot be considered.)



## Property values soar

Property values in Glen Eira have increased by about 33 per cent since the completion of the previous revaluations two years ago.

The revaluation of all properties has been ordered by State Government legislation, which also uses the new values for Land Tax purposes. For rating purposes, property values are determined by the buying and selling of property across the City.

Stand-alone dwellings have increased by an average of about 36 per cent while flats and units averaged 39 per cent increases.

The revaluation means that in general terms flats and units would be paying a slightly higher proportion of rates, while commercial properties will pay a slightly lower proportion.

The degree of movement in property values varies across localities for both houses and units, but a significant proportion of units have gone up more than the 39 per cent. This is because many of the units are smaller, older and cheaper and thus catering to the entry level property buyers and investors who took advantage of the Federal Government's first home buyer grants.

## Assault on a staff member

A charge of assaulting an officer of the Lost Dogs' Home, who was working for Council in Glen Eira, was heard before the Melbourne Magistrate's Court recently.

The defendant pleaded guilty to "unlawful assault" — admitting to slapping the officer and using abusive language.

Council's Chief Executive Officer Andrew Newton said: "Assaults on staff members or other Council representatives are not on. There are ample opportunities to resolve differences constructively. Assaults will be prosecuted through the courts."

The defendant was ordered by the court to make a written apology to the officer and make a \$100 donation to the Royal Children's Hospital.





# Language Line



## Πlanificazione urbana più rapida e migliore

— Il Comune di Glen Eira all'avanguardia

Il Comune di Glen Eira è all'avanguardia nelle riforme riguardanti le decisioni di pianificazione urbana con un programma pilota per la procedura preliminare di presentazione e verifica delle domande.

Le procedure preliminari di presentazione permettono ai costruttori di inoltrare domande che sono già state sottoposte al processo di valutazione e verifica - semplificando in tal modo il procedimento.

Il Group Manager dei Servizi Statutori, Duncan Turner, ha detto: "Il nostro sistema è bloccato con proposte che non sono in conformità con le regole di pianificazione del Comune o dello Stato. In passato, sono state inoltrate al Comune molte proposte incomplete con l'aspettativa che il sistema di pianificazione e i progettatori del Comune avrebbero reso la proposta accettabile. Il sistema non può più far fronte a queste aspettative a causa del sovraccarico di lavoro, dell'eccessiva partecipazione pubblica, della scarsità di

progettatori, delle domande sempre più incomplete e delle esigenze eccessive poste sui progettatori del governo locale".

Il concetto di verifica preliminare mira a migliorare lo standard delle domande prima che vengano inoltrate al Comune - i richiedenti dovranno incontrarsi con i vicini di casa insieme ad un progettatore del Comune e chiedere a un consulente indipendente di verificare la loro proposta.

Ha detto che un aspetto importante del progetto pilota è il fatto che questo processo è limitato alla presentazione delle domande e che il Comune mantiene il controllo sulla decisione finale tramite le procedure formali di pianificazione.

Il Comune attualmente sta apportando delle modifiche al modello del progetto pilota al fine di stabilire un sistema basato sul principio che l'utente paga, come alternativa alle richieste che verranno inoltrate più tardi.

In risposta al successo del progetto di Glen Eira, il Governo Statale prevede di incoraggiare gli altri Comuni ad introdurre simili meccanismi di verifica preliminare.

## Как улучшить и ускорить городское планирование

— Инициатива муниципалитета Glen Eira

Наш муниципалитет занимает лидирующее положение в вопросах проведения реформы городского планирования и в настоящее время проводит испытание новой системы предварительной подачи и сертификации заявлений на осуществление строительных проектов.

Система предварительной подачи заявлений позволяет разработчикам проектов представлять на получение разрешений материал, уже прошедший оценку и сертификацию, что упрощает процесс рассмотрения заявлений.

Руководитель группы законодательных услуг г-н Duncan Turner говорит: «При нынешней системе мы получаем большое количество заявлений, которые не соответствуют штатным или муниципальным правилам городского планирования. Плохо подготовленные заявления поступают в муниципалитет и ожидается, что наши работники доведут их до приемлемого состояния. Мы однако больше не в состоянии справляться с этим потоком из-за все более активного участия общественности, несамостоятельности разработчиков проектов, недостатка специалистов по городскому планированию и предъявляемых к ним самых разнообразных, иногда противоречивых требований».

Идея предварительной сертификации состоит в том, чтобы обеспечить соответствующий уровень заявлений на осуществление строительных проектов до того, как они официально подаются на рассмотрение в муниципалитет. Для этого разработчики проекта должны провести предварительную встречу с местными жителями и представителем муниципалитета, а также представить свое предложение на проверку независимому консультанту.

Г-н Duncan Turner заметил, что эти новые правила касаются лишь предварительной оценки заявлений, и что решающая роль по-

прежнему принадлежит муниципалитету при окончательном, официальном рассмотрении заявлений.

В настоящее время в новую модель вносятся некоторые изменения, и позднее в этом году новая система, работающая по принципу «заказчик платит», будет предложена разработчикам проектов как постоянно действующий вариант.

Следуя успешной инициативе муниципалитета Glen Eira, правительство штата собирается предложить другим муниципалитетам внедрить принцип предварительной сертификации.

## 更快更好的城市規劃申請手續

— Glen Eira 市政府走在前列

Glen Eira 市政府走在市政規劃決策改革的前列，目前正在試行市政規劃預申請計劃及認證。

預申請計劃允許發展商呈交經評估及認證的申請材料，以提高申請程序的效率。

法規服務部經理鄧肯·特納說道：“我們的審批體制因許多不符合市政府或州規劃政策的申請而運轉緩慢。過去，人們向市政府呈交不成熟的申請，然後期望規劃體制和市政府規劃官員修改申請至可接受的程度。由於申請的增加，公眾參與程度的提高，規劃人員的短缺，申請人日益增加的依賴性，以及申請方和反對方給予地方政府規劃官員的壓力，現在審批體制已無法滿足人們的這些期望了。”

預先認證的概念目的在於提高申請在向市政府實際呈交前的水準 - 申請人必須舉行由鄰居和一名市政府規劃官員參加的預申請會議，並由獨立的規劃顧問檢查其申請。

他說，這項試行工作的一個重要方面是僅限於預申請過程，而且市政府通過正式的規劃程序最終控制決策。

市政府目前正在調整這項試行工作，以便在今年晚些時候實行永久性的用戶付款制度。

鑒於 Glen Eira 市政府試行工作的成功，州政府正在考慮怎樣鼓勵其他市政府引進相似的預認證機制。

## Καλύτερη, ταχύτερη πολεοδομία

— Η Δημαρχία Δήμου Glen Eira πρωτοπορεί

Η Δημαρχία πρωτοπορεί με τις μεταρρυθμίσεις στη διαδικασία λήψης αποφάσεων για τις πολεοδομικές άδειες με το πιλοτικό της πρόγραμμα προ-υποβολής και βεβαίωσης πολεοδομικών αιτήσεων.

Το πρόγραμμα προ-υποβολής επιτρέπει σ' αυτούς που ανοικοδομούν να υποβάλλουν υλικό αιτήσεων που έχει ήδη υποβληθεί σε μια διαδικασία εκτίμησης και βεβαίωσης - βελτιστοποιώντας τη διαδικασία υποβολής αιτήσεων.

Ο Προϊστάμενος των Νομικών Υπηρεσιών Duncan Turner είπε: "Το σύστημά μας είναι παραφορτωμένο με προτάσεις που δεν συμμορφώνονται με τους Δημοτικούς ή Πολιτειακούς κανονισμούς. Στο παρελθόν, μισοτελειωμένες προτάσεις υποβάλλονταν στη Δημαρχία ελπίζοντας ότι το πολεοδομικό σύστημα και οι πολεοδόμοι της Δημαρχίας θα έκαναν τις προτάσεις αποδεκτές. Το σύστημα δεν μπορεί πλέον να αντεπεξέλθει με αυτές τις προσδοκίες λόγω του αυξημένου φόρτου εργασίας, αυξημένης συμμετοχής του κοινού, έλλειψη πολεοδόμων, ολοένα αυξανόμενος αριθμός εξαρτώμενων αιτούντων και ανταγωνιστικές απαιτήσεις επί των πολεοδόμων της τοπικής αυτοδιοίκησης."

Η έννοια της προ-υποβολής έχει ως στόχο τη βελτίωση του επιπέδου των αιτήσεων πριν όντως υποβληθούν στη Δημαρχία - οι αιτούντες πρέπει να διοργανώσουν συναντήσεις πριν την υποβολή της αίτησης με γείτονες και με έναν πολεοδόμο της Δημαρχίας και να ζητήσουν από έναν ανεξάρτητο πολεοδόμο εμπειρογνώμονα να ελέγξει την πρότασή τους.

Είπε ότι ένα σημαντικό σημείο του πιλοτικού προγράμματος είναι ότι η διαδικασία περιορίζεται στην προ-υποβολή των αιτήσεων και η Δημαρχία διατηρεί τον τελικό έλεγχο της λήψης αποφάσεων μέσω της επίσημης πολεοδομικής διαδικασίας.

Η Δημαρχία κάνει τώρα προσαρμογές στο μοντέλο του πιλοτικού προγράμματος για να εφαρμόσει αργότερα εφέτος ένα μόνιμο σύστημα με το οποίο θα πληρώνουν οι χρήστες ως μια εναλλακτική λύση για τους αιτούντες.

Λόγω της επιτυχίας της δοκιμής στο Glen Eira, η Πολιτειακή Κυβέρνηση σκέφτεται τρόπους για να παροτρύνει άλλες Δημαρχίες να εφαρμόσουν παρόμοιους μηχανισμούς πριν την έκδοση αδειών.

## Volunteers needed

For Meals on Wheels

Can you spare two hours per week, fortnight or month? Be part of a supportive group of volunteers by delivering for the Council's Meals on Wheels program.

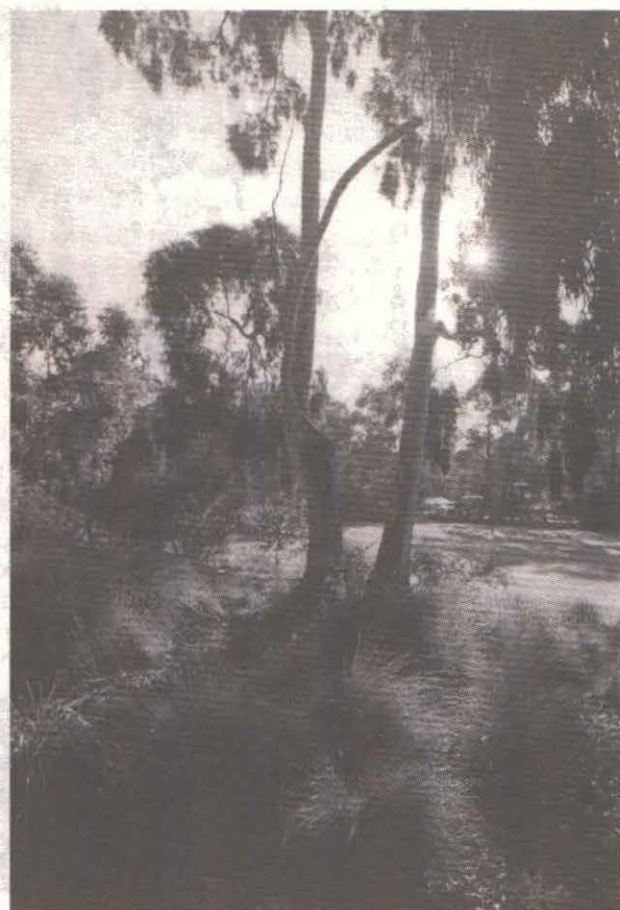
The program requires both drivers and jockeys, seven days a week. Volunteers receive training and are reimbursed for petrol.

Contact Stefanie on 9563 6611.

City of  
GLEN  
EIRA



# Boost for Boyd Park management plan



Indigenous species feature in the unique character of Boyd Park — part of the original outer circle railway.  
Photo: Myrine Hawksworth.

Council has been granted \$10,000 as part of the Crown Land Reserves Improvement Program by the Department of Natural Resources and Environment (DNRE) to develop a management plan for Boyd Park, Neerim Road, Murrumbidgee.

The grant will be matched by Council — providing a total of \$20,000 towards the development of the plan.

The management plan was identified in the Glen Eira Long Term Open Space Strategy and will be developed, along with an interpretive brochure, in consultation with residents, key stakeholders, DNRE and Council. The brochure will aim to encourage visitors to understand and enjoy Boyd Park's unique environment.

Boyd Park contains indigenous and remnant red gums, blackwood and swamp gums and a range of

native grasses and plants — the only park in Glen Eira where such vegetation exists — and is highly valued by the Glen Eira community. The proposed management plan will ensure the protection and enhancement of the indigenous landscape.

Mayor Cr Peter Goudge said: "This park is a popular destination for residents to walk and picnic. Council will be making sure local residents and the wider community will all be involved in the development of the management plan."

"This project will provide a blueprint for the future development of Boyd Park, in an effort to eliminate ad hoc development. Some of the remnant indigenous vegetation in the park dates from prior to European settlement. The proposed management plan will ensure its protection," Cr Goudge said.

## Giving powerlines a clear run

Clearing naturestrip trees from around overhead powerlines costs about \$125,000 per year — a cost which will continue to rise as more trees require regular pruning and clearing costs increase.

Glen Eira has an estimated 35,000 naturestrip trees and each year about 4500 are pruned away from powerlines by Council. This work is done on behalf of the State Government under the State Electricity Commission Act 1958 which requires the clearing of trees in "declared areas".

Almost all of Glen Eira is a declared area, and many of these trees are large established trees, requiring regular clearance away from overhead powerlines.

Prior to the Ash Wednesday bushfires in 1983, the State Electricity Commission (SEC) undertook much of the powerline clearance work in Melbourne's suburbs, but following those bushfires, responsibility was transferred to local government. Failure to ensure adequate clearances can result in disruption to power supplies to both residential and commercial properties, and possibly fires if high voltage powerlines are involved.

Each year, Council is required to submit a Vegetation Management Plan outlining how adequate clearances will be maintained between naturestrip trees and powerlines. Significant fines can be imposed on Council if it fails to satisfy obligations under the Electric Safety Regulations 1999 and the Code of Practice for Electric Line Clearance 1998.

Council annually surveys all naturestrip trees growing in or around powerlines to identify those requiring pruning. More stringent measures by the Office of the Chief Electrical Inspector to ensure compliance, and the growth of young established trees will mean an increase in the number of trees requiring pruning each year.

Powerline clearance will occur throughout the City over the next month.



A Council contractor clears branches away from overhead powerlines on one of 4500 naturestrip trees requiring pruning this year.

## Dogs and Cats — lots of them!

Many Glen Eira residents have pets. This year Council sent out 9287 dog registrations and 6439 cat registrations — a total of 15,726 registrations. That's more than a quarter of all households with either a dog or cat.

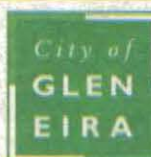
While an impressive 82 per cent of these registrations have been paid, 2832 renewal notices had to be sent out and Council is appealing to those pet owners to do the right thing and re-register their animals.

Manager Civic Amenity Carl Russo said: "Pet registration is the cornerstone of responsible pet ownership. It is a fact that the community is becoming increasingly demanding of pet owners, insisting pets are properly managed, particularly in public places. This is not a bad thing, but it nevertheless places higher demand on our officers and The Lost Dogs Home which manages Glen Eira's lost pets."

"Registration helps reduce the number of animals which cannot be returned to their owners, and ultimately saves a lot of heartache," he said. "Council's animal control officers will be door knocking during June in an attempt to get all pet owners to do the right thing."



## Kinder enrolments — now open



Council operates a central enrolment system for community-based kindergartens within Glen Eira.

Applications can now be lodged for children who will be attending 4-year-old kindergarten in 2004. (This includes children whose birthdays fall between 1 May 1999 and 30 April 2000.)

For children who will be attending 4-year-old kindergarten in 2003, applications are still being accepted and processed.

Enrolment forms are available from community-based kindergartens and Council's Service Centre. An application fee of \$9 applies. For forms and information contact: 9524 3333.

Note: 3-year-old kindergarten enrolments can be made directly at the kindergarten of your choice.



# Changing town planning and processes for the future

## Greater protection for 80 per cent of the City

### Glen Eira City Council Planning Scheme Amendment C25

Council is introducing changes to Glen Eira's town planning policies that will provide greater protection of existing neighbourhood character to more than 80 per cent of the City. The changes were developed from the draft Housing and Residential Development Strategy which has just been completed.

The policy changes will also re-direct multi-unit housing into appropriate locations suited to accommodating housing changes (less than 20 per cent of the City) to meet the changing needs of the community and stimulate and improve the vitality of Glen Eira's shopping centres by encouraging residential development in and around them.

To implement the strategy, Council is proposing changes to town planning policies in the Glen Eira Planning Scheme (Amendment C25).

### Why do our town planning policies need changing?

The changes to Glen Eira's town planning policies are necessary because of:

- an ageing population and decreasing household sizes — leading to different housing needs (eg, families where the children have left home seeking smaller homes, people beginning families, older people wanting retirement housing);



"Re-directing multi-unit housing into appropriate locations suited to accommodating housing changes to meet the changing needs of the community."

- community concern about the impact of residential development on existing neighbourhoods;
- a desire for certainty about the type of development that can occur in residential areas; and
- a need to sustain Glen Eira's shopping centres so that they can remain competitive and continue to provide services to residents.

### How have the changes been developed?

The changes to Glen Eira's town planning policies are based on the Housing and Residential Development Strategy. This Strategy guides how residential development in Glen Eira will be planned and managed over the next 20 years. The Strategy looks at the location and type of residential development needed to meet the changing housing needs of the



The Housing and Residential Development Strategy — "protection of existing neighbourhood character".

population. It also explains how the impact of residential development on neighbourhood character will be managed.

### What direction will residential development take in Glen Eira?

The changes to Glen Eira's town planning policies will achieve the following three things.

#### 1. Ensure a greater diversity of housing to meet future housing needs

To respond to Glen Eira's changing housing needs, areas have been identified where a range of housing types (such as single houses and multi-unit developments) could be developed. By encouraging a wider range of housing types in these areas, residents who want different types of housing can still live close to family and friends.

These "housing diversity areas" are located in and around shopping centres and close to public transport to take advantage of existing infrastructure and revitalise shopping centres. Housing diversity areas can provide a large amount of Glen Eira's demand for housing over the next 20 years — allowing housing needs to be met while protecting neighbourhood character in the rest of the City.

#### 2. Improve and protect liveability, neighbourhood character and amenity

Protecting neighbourhood character and the quality of life in the majority of Glen Eira's residential areas is a key focus of the town planning policy changes. For 80 per cent of the City, in a "minimal change area", single houses, extensions to existing houses and two dwellings developments are envisaged as the type of housing that will be developed. Large multi-unit developments will not be encouraged in these areas.

#### 3. Stimulate and improve the vitality of shopping centres

Encouraging a mix of housing types and mixed use developments in and around the City's shopping centres will help to stimulate and revitalise them. This will help create safer, more attractive and lively



community focuses, improve the viability of centres and provide environmental benefits such as encouraging walking and increasing opportunities for public transport use.

### What changes are being made to Glen Eira's town planning policies?

The specific changes to the Glen Eira Planning Scheme include:

#### Municipal Strategic Statement

The Municipal Strategic Statement (MSS) in the Planning Scheme provides the broad planning visions for the City, including long term directions for land use and development. The objectives and strategies from the Housing and Residential Development Strategy have been included in the MSS.

#### Local planning policies

Local policies provide more specific information on how the objectives and strategies in the MSS will be achieved. They describe Council's approach to an issue or an area. To implement the Housing and Residential Development Strategy, two local policies have been developed.

The Housing Diversity Policy outlines the different types of development which can be undertaken in housing diversity areas and minimal change areas.



A strategy to stimulate and improve the vitality of Glen Eira's shopping centres by encouraging residential development in and around them.

Photos: Ron Torres.

The Residential Character Policy identifies aspects of neighbourhood character that should be incorporated into new development — for example, preserving front yards and ensuring a high standard of landscaping is provided. The policy also lists important character elements for each suburb which must be taken into account in new developments. The Policy will also identify areas of the City where the character is considered particularly special.

### Increasing the standards for development in residential areas

Under ResCode, the new provisions for residential development in Victoria, Council can change some of the standards for residential development to reflect Glen Eira's neighbourhood character. Amendment C25 proposes to change some of these standards, including:

- increasing the amount of private open space that has to be provided for multi-unit developments from 40 square metres to 60 square metres;
- increasing the amount of space that single houses and multi-unit developments have to be set back from the rear boundary to 4 metres; and
- reducing the site coverage (or area of a site that single houses and multi-unit developments can take up on a site) from 60 per cent of the site area to 45 per cent.

The Housing and Residential Development Strategy and Amendment C25 are on exhibition from 6 June to 18 July at the Glen Eira Town Hall, Council's libraries, on Council's website (at [www.gleneira.vic.gov.au](http://www.gleneira.vic.gov.au)), at the Department of Infrastructure, Customer Service Centre, 80 Collins Street, Melbourne or by phoning the Strategic Town Planning Unit on 9524 3476.

**Submissions are welcome and must be made in writing no later than 18 July. Submissions can be sent to Glen Eira City Council, Strategic Town Planning, PO Box 42, Caulfield South 3162.**

### Did you know?

Answer from page 1:

Glen Eira's drains, if laid in a straight line, would reach to Swan Hill — a distance of about 360 kilometres.

### Continued from page 1

"Planners at Glen Eira can now concentrate on decision-making and are no longer acting as planning consultants and 'holding the hand' of developers through complex planning requirements. When an application is lodged, applicants are advised once only of any shortcomings — and in our experience more than 90 per cent of applications have shortcomings. The applicant is then given 21 days to address the issues before the application is decided."

Mr Turner said recent statistics had shown Council planners were making more decisions than there were

## Council has its say on VCAT

Council planning officers were recently invited to make a presentation to a Reference Group, established by Minister for Planning Mary Delahunty, to address the application of local policy in determining town planning applications. Of particular concern, was the Victorian Civil and Administrative Tribunal's tendency to either ignore or dispute local policy.



One of many developments rejected by Council, accepted by VCAT — the multi-unit dwelling at 29 Downshire Road, Elsternwick.

The Reference Group was established in response to a number of town planning issues raised by Council and the Inner South Metropolitan Mayors Group (of which Glen Eira is a member).

Glen Eira was the only Victorian Council asked to present to the group which was chaired by prominent town planner David Whitney and included representatives from local government, the Municipal Association of Victoria, VCAT, and the Department of Infrastructure.

Director City Development Jeff Akehurst said the forum was "a good opportunity for Council to get its point across about some of the concerns it has with VCAT and the general application of local policy. It is fairly rare that Councils are given the opportunity in a formal forum to be constructively critical of VCAT."

Council's submission raised a number of problems Council believes exist in the planning system in relation to using and interpreting local policy. These included VCAT's failure to implement and give adequate weight to local planning policy, or to correctly interpret local planning policy — despite local policy having the status of law.

He said the current process of appeal allows for VCAT to undermine local government decisions by requiring only that the decision maker "consider" such formally endorsed policies rather than "implement" them — in effect disregarding local policies developed in line with State requirements to meet local needs.

"So, provided it can be demonstrated 'some consideration' of the relevant state or local planning

policy has been made, however slight, the policy can be rejected or accorded little weight by a decision-maker such as VCAT. This can occur even if the policy has been endorsed and incorporated into a planning scheme through a formal planning process, thereby making it law," Mr Akehurst said.

"This certainly undermines much of the policy emphasis which is inherent in planning reform, if the legislative requirement is merely to 'consider' formally endorsed policy — particularly given the first stated purpose of every zone is to implement State and local planning policy."

Mr Akehurst said the ramifications for Glen Eira residents were that development which did not fit within the local planning policy, and which had been rejected by Council as inappropriate, could be given the go ahead by VCAT at an appeal. He said in the last year, VCAT had overturned 38 such Council decisions.

"We believe some sections of the Victorian Planning Provisions (State planning controls which set the guidelines for local government planning policies) and the Planning and Environment Act may need amending to strengthen the status of policy (both local and State)."

"Somewhat ironically, the weaknesses Council has identified in the current planning legislation also weaken the State Government policy and threaten the applicability of planning controls across the State."



Is this large scale, multi-unit development in Hawthorn Road, Caulfield North, really sympathetic to the area's neighbourhood character?

He said Council's submission strongly recommended making it a requirement that decisions be made which "implement or give effect to" both the State and local planning policy. "It is obviously of great concern to Council which has put considerable effort into developing a strategic local policy, and having itself implemented that policy, to have the policy seemingly rejected or accorded little weight by VCAT."

The Reference Group appeared to acknowledge Council's concern and will now consider its submission.

Council, quicker overall timelines for applicants and an appreciation from neighbours of early involvement in the planning proposal," Mr Turner said.

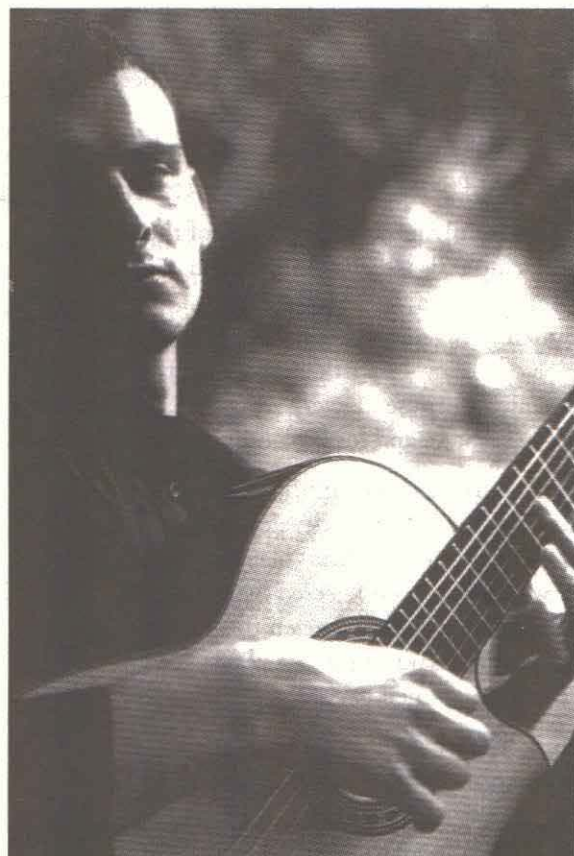
Council is now making adjustments to the pilot project model to have a permanent user pays system in place as an alternate for applicants later this year.

In response to the successful Glen Eira trial, the State Government is considering how to encourage other Councils to introduce similar pre-certification mechanisms.

—Myrine Hawksworth



# ARTS Arts



## Slava Grigoryan in concert

with special guest Leonard Grigoryan

Sunday 30 June at 2.30pm

As part of Council's Winter Music Series, internationally renowned guitarist Slava Grigoryan will perform a program of classical and contemporary music.

In 1998, Slava was named Young Australian of the Year for the Arts and in September 2000, as part of the Sydney Olympic Arts Festival, he appeared as soloist with the Australian Chamber Orchestra.

During his professional career, Slava has performed with the world's leading orchestras including the London Philharmonic Orchestra, BBC Concert Orchestra, Melbourne and Sydney Symphony Orchestras, Israel Symphony Orchestra, and the Dresden Radio Orchestra.

Recent performances include appearances with the Royal Scottish National Orchestra, the City of London Festival, the Hong Kong Festival and a tour of Japan. As a major prize-winner at the Tokyo International Classical Guitar

Competition, Slava was signed by Sony Music Entertainment and has since released five solo albums.

Don't miss this wonderful afternoon of musical magic by these two outstanding musicians.

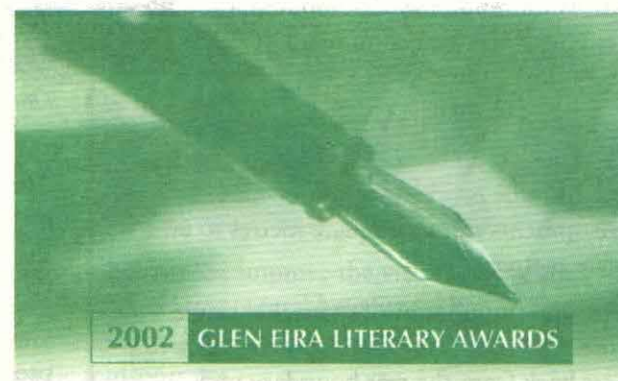
Venue: Auditorium, Glen Eira Town Hall, corner Glen Eira and Hawthorn Roads, Caulfield

Time: 2.30pm-4.30pm

Tickets: \$20/\$18 (incl. GST)

Tickets available at the Service Centre, Monday to Friday 8.30am-5pm.

Bookings: 9524 3333



## YouthPix — Works on Paper Award, 2002

**Presented by Glen Eira City Council**

Significant changes have been made for this year's YouthPix Award. The award for secondary school students and artists under 26 years of age, is now a "Works on Paper" award — printmaking, drawing, collage, painting and photography are now all eligible for entry.

YouthPix is sponsored by the Melbourne School of Art which provides cash prizes in the open category for artists under 26, and tuition prizes in the secondary school category. The Melbourne School of Art offers training in life drawing, graphic arts, photography, and computer imaging, including 3D design and animation.

Entry forms are available from Council's website [www.gleneira.vic.gov.au](http://www.gleneira.vic.gov.au) or by contacting the Service Centre on 9524 3333.

Open category entries close Monday 29 July at 7pm.

Secondary school entries close Monday 12 August at 7pm.

Exhibition at Glen Eira City Council Gallery from Wednesday 21 August to Sunday 1 September.

### Major Prizes

Open Section for artists under 26 years of age — cash prizes:

1st \$1000 2nd \$400 3rd \$200

Secondary Students — tuition in art or digital imaging course of your choice at the Melbourne School of Art to set value

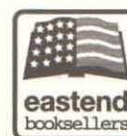
1st \$1000 2nd \$600 3rd \$400

Council gratefully acknowledges the Melbourne School of Art for providing all the major prizes for this competition.

## 2002 Glen Eira Literary Awards

Full details of all the prize-winners will be published in the July edition of the Glen Eira News.

Proudly sponsored by Council and:



The Baha'i Community of Glen Eira



## Exhibitions

Glen Eira City Gallery: corner Glen Eira and Hawthorn Roads Caulfield.

Hours: 10am-5pm Monday to Friday, 1-5pm Sat/Sun/Public Holidays.

Contact: David O'Halloran on 9524 3214.

### Paul Ching-Bor

5-23 June



Paul Ching-Bor works with a century of powerful influences and an age-old tradition of watercolour and has emerged with an entirely fresh and intensely unique style.

His paintings are crafted with frenetic brushstrokes of watercolours on paper, and despite their watery nature, are dark, sombre and heavy. In a collision of Turner, the Gothic and the 21st Century, these visionary paintings are difficult to put aside.

Strong, almost calligraphic watercolour gives the paintings an overwhelming saturation of constant rain, which visually obscures the last traces of burning light. These paintings are intense and apocalyptic streetscape and harbourside visions, which conjure up a great deal more than their realist source material.

### Timbuktu to Tasmania

Presented by Sidewalk Gallery

26 June-7 July

The key works in this year's exhibition of African artifacts by Sidewalk Gallery are works that have been collected over 30 years by African collector Francoise Byemba. Works from this collection include helmet mask and stool from Congo, fetish figures from Tanzania and Mozambique and good quality pieces, worn and scented by the African heat, including masks and helmets also from Congo.

Ann Porteous and her Sidewalk Gallery stage an amazing exhibition of African artifacts. Porteous is recognised as one of Australia's leading dealers in African and primitive artefacts.

The Glen Eira City Gallery will be again full of jewellery, masks and wooden totemic sculptures. This exhibition has become a regular highlight of the Gallery's annual program.



## Mailing list

Council has a wide range of information available on arts and cultural programs. Please indicate which area is of interest to you and we will include you on our mailing list(s).

Exhibitions ☐ Special events ☐ Seminars ☐  
Classes/workshops ☐ Arts & (newsletter) ☐  
Concerts/music performances ☐

Name: \_\_\_\_\_ Age: \_\_\_\_\_

Address: \_\_\_\_\_

Postcode: \_\_\_\_\_

Email address: \_\_\_\_\_

Send to: Arts mailing list,  
Glen Eira City Council,  
PO Box 42, Caulfield 3162.  
or email: [rverde@gleneira.vic.gov.au](mailto:rverde@gleneira.vic.gov.au)



# Trial removes need for chemical controls

A relatively new method of biological control has enabled Council's Parks Services to greatly reduce the amount of chemical pesticides used on sports grounds over the summer.

In trials to control the turf pest African Black Beetle, Council has introduced microscopic worm-like creatures called nematodes to affected areas to kill the beetle larvae before they mature and breed.

Park Services manager Laurie Unwin said it was the beetle grubs, rather than the adult beetle, that caused most damage to the turf. "They feed on the roots and rhizomes of the grass, causing it to wilt and die. And further damage is caused by birds searching for these grubs as a food source. They tear the turf and roll it back like carpet to get at the grubs."

He said not only did the pest create ugly patches of dead and damaged turf, but extensive turf damage could put player safety at risk. Using chemicals to

control the beetle was expensive and required extensive safeguards to prevent damage to the environment. The nematodes used in the trial were unlike other species which could be detrimental to plant life.

"These nematodes are completely harmless to humans, domestic and native animals, flora and fauna. We have treated 33 hectares with the nematodes and seen a great result already. Controlling the beetles will greatly reduce the costs of autumn ground renovation and further savings will be made in weed control — by maintaining a healthy cover of turf, weed infestation is greatly reduced."

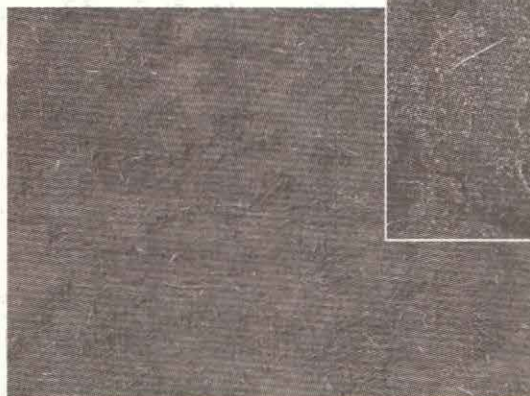
"But most importantly, we've achieved control of the pest without the need for chemicals," Mr Unwin said.

The nematode enters the body of the grub via natural body openings and penetrates the

blood cavity from the gut or breeding tubes. Once in the blood, the nematode quickly multiplies, producing 100,000 or more juvenile nematodes, killing the grub in about 24 hours but preserving the body as a food source while breeding. Nematodes die off when their food supply is exhausted or soil temperature drops over the winter period.



Above: Black Beetle grubs infected by nematodes.



Left: Turf damage caused by Black Beetle grubs and birds.

## Keeping up with your health

### Health Seminar for Glen Eira residents

In partnership with Council, Bayside Health and Bentleigh Bayside Community Health Service will hold a seminar on promoting health and preventing diseases such as cardiovascular disease and diabetes.

Health specialists from the Alfred Hospital and Caulfield Community Health Service will explore topics such as family nutrition, identification and the prevention of diabetes, and heart health.

Date: Tuesday 16 July  
Time: 7:00pm-8:30pm  
Venue: Theatre, Glen Eira Town Hall, corner Glen Eira and Hawthorn Roads, Caulfield.

**Bookings essential.**

Contact the Public Health Unit on 9524 3484

## AGORA ORGANICS

Healthier alternatives  
organic, bio-dynamic and  
environmentally safe products  
at low prices

### Home delivery

Telephone: (03) 9557 5240  
Facsimile: (03) 9557 5240  
PO Box 2077, Moorabbin 3189

*The power to make healthier and  
safer choices is in your hands*

## It's a world of computer experience



### Nucleus Computer Services Pty Ltd

- Electronic Repairs to all Computers, Monitors, Printers and Notebooks.

#### NEED IT FIXED?

On site or in our workshop.

#### NETWORK, INTERNET and VIRUS SUPPORT

- Accessories, Parts, Cables, Fans, Print Cartridges Available.

**24 HOURS — 7 DAYS**

Call Now for Prompt and Reliable Service

**9569 1388**

www.nucleuscomputer.com.au  
9b Morton Ave, Carnegie 3163

## FREE business listing

Council is currently updating local business listings and offering an opportunity to all business owners based in Glen Eira, to promote their business and its services to the local community, free of charge.

Business owners are invited to update their details either online (on Council's website: [www.gleneira.vic.gov.au](http://www.gleneira.vic.gov.au)) or by completing and posting or faxing the form to:

Post to:  
Business directory listings  
Business Development Unit  
PO Box 42  
Caulfield South 3162

Or fax to: (03) 9524 3397

### Glen Eira Business Directory Listing

Name of Business: .....

Address: .....

Postcode: .....

Phone: ..... Internet address: .....

Brief description of business category: .....

Hours of business: Mon/Fri: ..... Sat: ..... Sun: .....

### Please complete the following for the Business Development Database:

Note: The section below contains further material which will NOT be published. This material is stored on Council's central database for use only by the Business Development Unit or approved Council staff.

Contact Name: .....

Title: ..... Fax: ..... Mobile: .....

Business Activity: .....  
(ie: manufacturing/retail/wholesale/import/export)

Email address: .....

Would you like Council to forward business information via email? YES / NO

No. of employees: .....

Are you interested in attending business seminars? YES / NO

Please circle topics of interest.

Cash Flow / Innovative Management / Human Relations / Industrial Relations /  
Marketing / Business Plans / Time Management.

Any personal information about an individual on this form, is required to facilitate publication of Council's website and/or Business Directory. This personal information is used by Council only. You may access any personal information held by Council regarding yourself by contacting Council on 9524 3333.



# COMMUNITY *Diary*

## Council

### Internet classes

Book at any branch of the Glen Eira Library and Information Service.

*Email* — Friday 14 June, 1.30pm–3pm, Thursday 27 June, 10.30am–12pm. Cost: \$33

*Introduction to the Internet* — Friday 21 June, 10.30am–12pm. Cost: \$33

*Further Steps on the Internet* — Friday 28 June, 10.30am–12.30pm. Cost: \$55

Book both an *Introduction* and a *Further Steps* class together and pay only \$66 (a saving of \$22)! All prices include GST.

Classes are held in at Caulfield Library.

Contact: 9532 9466.

## Meetings and clubs

**4th Caulfield Clubs and Scouts** meet weekly in Birch Street, Caulfield South. Range of activities, including weekend camps, for girls and boys. Cubs: aged 7½ to 10. Scouts: aged 11 to 14. Contact: Jo or Steve 9505 6995.

**Over 40s Club** dance — all ages — old time; modern; new vogue at Ormond Uniting Church, corner North and Booran Roads Ormond on second and fourth Saturdays of each month at 7.45pm. Supper and live music. Cost: \$7. Contact: 9570 4564.

**Caulfield Life Activities Club** will meet at Gladys Machin Hall, Cedar Street Caulfield on Wednesday 19 June at 7.30pm. Guest speaker. Supper served. New members welcome. Contact: 9568 5849.

**U3A Glen Eira** will hold a special general meeting at Christ Church Hall, corner Wheatly and North Roads Ormond on Thursday 27 June 1.30pm–3.30pm. Topic: *The future of U3A Glen Eira is at stake, it is vital that all members attend.*

**Bentleigh Life Activities** Club offers opportunities to meet new friends and enjoy social activities. Contact: 9557 2562 or 9563 2554.

**Bentleigh Buddies Playgroup** needs new members. Meet at 20 Brewer Road, Bentleigh on Mondays, 9.30am–11.30am. Great toys with indoor and outdoor play areas. Contact: Tania 9557 7556 or Julie 9557 3450.

**Club 66** holds old time, modern, new vogue dances, live band, at Bentleigh Uniting Church Hall, Centre Road, Bentleigh (opposite RSL) on the first and third Saturday of each month at 8pm. All ages welcome. Cost: \$6. Contact: Margaret 9587 1092.

**City of Moorabbin Historical Society** will open Box Cottage in Joyce Park, Jasper Road, McKinnon on the last Sunday of each month, February to November, 2pm–4.30pm. Admission by donation. Contact: 9578 7060.

**Gladys Machin Senior Citizens Club** invites citizens 55 years and over to join and enjoy social activities, bowls, bingo and day trips. Contact: 9528 9427.

## Community

**12th Caulfield Scout Group** have a hall for hire at 1 Beavis Street, Elsternwick. Reasonable rates, excellent for parties and functions. Contact: Lorraine 9532 9931.

## Events

**The National Trust Mansion Labassa** will hold a performance with Ian Holtham (Head of Key board at the Faculty of Music, University of Melbourne) playing works by Chopin, Mozart, Schubert and List at 2 Manor Grove, Caulfield North on Sunday 16 June at 3pm. Tickets: \$28 (members \$22) includes champagne and canapes. Bookings essential. Contact: 9885 7712 or 9578 0328.

## Immunisation dates for June

### Glen Eira Town Hall

(entry via Glen Eira Road)

Corner Glen Eira and Hawthorn Roads, Caulfield  
Tuesday 11 June, 9.30am–10.30am  
Tuesday 2 July, 6pm–7.30pm

### Murrumbeena Baptist Church

44 Murrumbeena Road, Murrumbeena  
Monday 17 June, 10am–11am

### Bentleigh-Bayside Community Health Service

Gardeners Road, Bentleigh East  
Wednesday 19 June, 6pm–7pm  
Saturday 22 June, 9.30am–10.30am

### Glen Huntly Maternal and Child Health Centre

Corner Royal and Rosedale Avenues, Glen Huntly  
Wednesday 26 June, 9.30–11am

### Bentleigh Baptist Church

10 Vickery Street, Bentleigh  
Monday 1 July, 1.30–2.30pm

## Anthony's Conveyancing

Buying or selling. Houses or land  
(solicitor supervised)

Phone 9571 1073 anytime

Open till 7pm weekdays  
(By appointment weekends)

77 Grange Road, Glen Huntly 3163  
(Corner Neerim Road)

## A day to celebrate "mums"

**M**others of students at Bentleigh West Primary School gathered together for an afternoon of wine, cheese and nibbles last month to be acknowledged for Mother's Day. Students from Grade 1 and 2a (pictured below) were among the classes who sang songs and recited poetry at the afternoon which was organised by Parents Association President Therese Green. The event was hailed as a wonderful success by the mums (and grand-mums) attending, who each received a potted pansy as a memento of the day.



## JUDO

**YAMADA JUDO ACADEMY**  
Caulfield Recreation Centre  
6 Maple St, Caulfield South  
9578 4460

**Self defence, Concentration, Discipline, Co-ordination, Self-esteem, Enjoyment, Stress Release**  
BEGINNERS TO BLACK BELT – From 4 years old

## Cut this out now! Place under a Fridge Magnet <= STEEL FRAME WINDOWS (KM)

- Old winders repaired and serviced
- Windows unstuck • Locks
- New winders supplied and fitted
- Old stays converted to winders

*20 years' experience  
On site service only*

For the "Rolls Royce" of winders phone:

## Acorn Winder Replacements

0418 312 615 — Telephone: 9882 5966  
56 Auburn Grove, East Hawthorn

## GLEN EIRA 2002 BUS TRIPS

Take advantage of low budget bus trips  
— organised by volunteers for you.  
Travel with an accredited bus operator.

**Wednesday 17 July. Cost: \$35 10am–3.30pm (approx.)**  
**CHRISTMAS IN JULY** at the famous CUCKOO RESTAURANT, OLINDA. Smorgasbord feast and entertainment by The Bavarians. Log fire and Father Christmas. Another memorable visit to the CUCKOO. Price includes bus and lunch.

**Wednesday 21 August. Cost: \$20 9am–5pm (approx.)**  
**PHILLIP ISLAND.** Trip will include visit to Australian Dairy Centre, Seal Rocks boardwalk (entry to Sea Life Centre available at own expense), Koala Conservation Centre (small entry fee-own expense). Come along with us on this trip — breathe in the fresh sea air and enjoy nature all around. A delightful day.

Note: Bring your own food and drink or buy there.

Both tours depart from Glen Eira Town Hall (9am) and 10 minutes later from Glen Huntly Station (Tram Stop 60).

**BOOKINGS: BY PHONE ONLY**  
— Fridays, 9am–2pm on 9523 7862.

## Broken Cords or Balances

### IN DOUBLE HUNG WINDOWS

- ◆ Bottom sash (2 cords) from \$40
- ◆ Both sashes (4 cords) from \$50
- ◆ Tubular balances from \$55 per pair
- ◆ Pensioner discounts available

Price depends on size, condition and number

- Also ◆ Fit heavier counter weights  
◆ Convert concealed to tubular balances

**John Moline:**  
**9822 3470 AH**

Cut out this ad and keep for future reference

## Glen Huntly Friendship Group

99 Grange Road, Glen Huntly

Activities for June

Enquiries and bookings  
Margaret 9596 6124

**Wednesday 12 June**

It's "Winter Woolies" time and the 'Golden Girls' have a fantastic range of winter clothing for our appreciation.

\$2.50 includes morning tea.

At 99 Grange Road Glen Huntly, 10am to 12pm.

**Wednesday 26 June**

Lets go to town to experience some of Melbourne's "sights and sounds" including — Immigration Museum, Rialto Observation Deck, Imax theatre and new Museum. Meet at 10am Flinders Street Station (under the clocks). Depending upon choice approximate cost \$20 to \$30. Pay as we go.



Glen Eira

## Youth Page



## Police + young people = teamwork

Glen Eira Youth Services and Caulfield Police have recently joined forces, offering local young people a range of recreational opportunities and social support. Youth Liaison Officer Snr-Constable Jason Fox and School Resource Officer Snr-Constable Jeremy Beaumont, with support from Sergeant Brian Patch, are working to foster stronger police-youth

relations, by becoming more involved in community activities.

The combined team of police, youth workers and young people are currently participating in ongoing basketball and soccer competitions.

In addition, the team at Caulfield Police Station have helped to facilitate programs such as *Roar in the Classroom* where AFL footballers visit local schools to give positive messages about the value of education and citizenship.

So when you next see a police officer, ask yourself, is this a footballer, a basketballer or a soccer player in disguise?

## Wildcats on the prowl

Glen Eira Youth Services has teamed up with the Caulfield Police to give young people the opportunity to play basketball without having to worry about fees, transport hassles or washing uniforms. The team, the "Why? Stop Wildcats", is open to any young male 16 years old and above. You don't have to be Michael Jordan, just a young person who likes to play basketball.

The Wildcats made their debut in the Oakleigh Basketball competition in April - although the team didn't win, there were some encouraging signs with the Wildcats outscoring the opposition 12 to 7 in the second half with some great defensive pressure. It was an outstanding first effort from a group of players who had never met before, let alone played together. Encouragement from the sidelines provided by the Council's Youth Services cheer squad added to the fun and friendly atmosphere.



Police, youth workers and young people make a formidable basketball team.

## Travel scholarship to Japan

September–October 2002

The Glen Eira–Ogaki Friendly Cities Advisory Committee invites students of Years 9 to 11, whose parents are ratepayers or residents of the City of Glen Eira, to participate in a student exchange to Ogaki, Japan during the third term holidays — 29 September to 10 October 2002.

The visit will be partially funded by a scholarship.

Applications close 28 June, 2002.

For more details contact Michelle Hurd at Glen Eira City Council on 9524 3225.

City of  
GLEN  
EIRA

## Glen Eira Women's Business Network

Thursday June 20 at 7pm

Advertising and Marketing

Presented by Geoff Phillips, a

visionary and highly experienced marketer, who knows the importance of BRAND power.

His senior executive positions include Southcorp, Rinai, Sharp and Frances Group Advertising. Caulfield Cup Room, Glen Eira Town Hall, corner Glen Eira and Hawthorn Roads, Caulfield.

Supper included.

Contact Manager Business Development Lynda Bredin on 9524 3384.

## Life, up-grade it!

Being part of the bigger picture often produces surprising results in our lives. When we, as people, are linked and actively involved in the community, we often find that our lives improve. This sense of connectedness is also increased when we are involved in activities that increase our sense of wellbeing, belonging and benefit our health.

Glen Eira Youth Services is looking for young people who are interested in developing stronger links with community recreation and leisure activities to become involved with the Community Strengthening Initiative. The Community Strengthening Initiative is about supporting young people to access recreational and leisure opportunities. This may include traditional sports such as football or cricket, or it may include recreational activities, which are "outside the box" such as circus activities, drama, art, skating or camping.

## SFYS — innovative programs in Schools

School Focused Youth Service (SFYS) recently allocated brokerage funds to schools in the cities of Glen Eira, Port Phillip and Stonnington to assist them to run suicide prevention and wellbeing programs. Four Glen Eira schools received funding for in-school programs.

Yeshivah College will run an after school electronics club for students to develop creativity and a sense of achievement they may not experience in class.

Ormond Primary School will use the funds to implement a student wellbeing and drug education program — focusing on senior students, but part of a whole school strategy of drug prevention and education for students, parents and teachers.

Moorabbin Heights Primary School will assist vulnerable students through a peer support and school beautification program, which will enhance students connectedness to school and peer networks.

Caulfield Junior College will implement the Pets as Workers in Schools (PAWS) program, using a school puppy to teach students about responsibility and respect and as a companion to students experiencing difficulties or loneliness.

To find out more about any of the items on this page, contact the Why? Stop Youth Information Centre on 9572 5389.



## GYMBAROO

4 MTHS TO SCHOOL YEARS

COME AND ENJOY OUR:

- Specialised equipment •
- Structured program •
- Climbing, rolling, balancing and jumping •
- Songs, dance and rhythm •

Ample and traffic-free parking  
Operates: Tues, Wed, Thur and Sat

Moorleigh Community Village Gym  
Rob Flavell Wing, (Cricket Ground End)  
90–92 Bignell Rd East Bentleigh

TELEPHONE GAIL 9570 1422



# Recreation News

## New signs for Packer Park

Spectacular new signage has been installed in Packer Park. The signage completes the rejuvenation of the park and highlighting two important elements within it — the velodrome and the frog hollow.

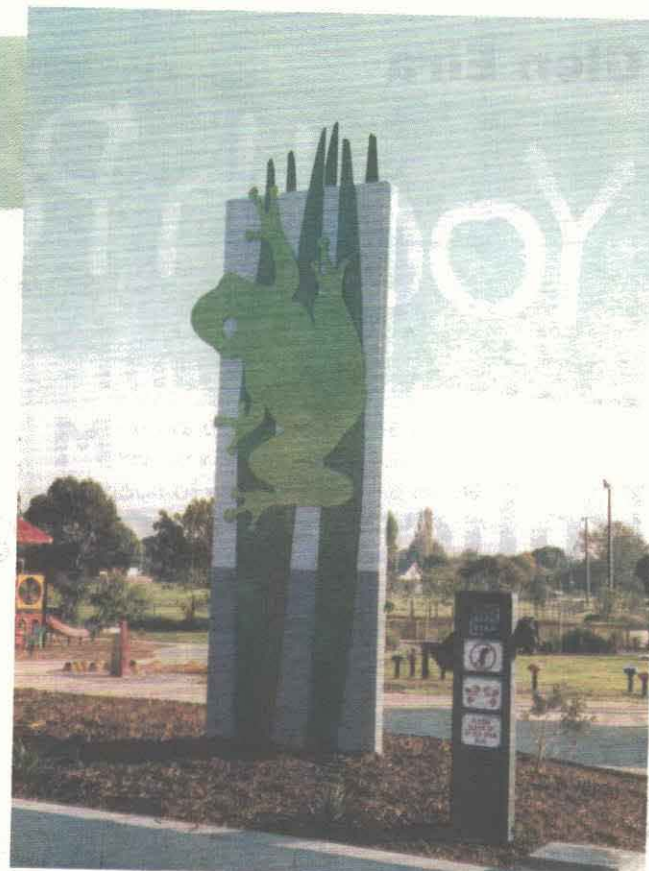
Many people in Glen Eira may not have been aware that a velodrome exists in the City, even those who regularly drive past Packer Park may have missed it. But the new signage, featuring life-size bike riders and depicting various stages of a race, highlight the velodrome and encourage people to stop and have a look. Home to the Caulfield Carnegie Cycling Club, the velodrome is used for both training and racing. It

is open for public use when not booked by the club. New members are always welcomed by the club.

Similar signage has also been installed to highlight the frog hollow theme of the park. These brightly painted signs feature giant reeds, frogs and tadpoles and celebrate the redevelopment of the area.

The new signage complements the recent park upgrade and encourages residents and visitors to this park to stop and explore this wonderful new venue.

*New signs let people know about the frog hollow at Packer Park.*  
Melway Ref: 68 J8



## “Secret garden” at Wattle Grove Reserve

Wattle Grove is a great little park to visit — tucked away between residential streets in McKinnon with the main entrance off Wattle Grove. But if you enter off Wheatley Road, the small entrance gives little indication of the beautiful garden just around the pathway. The neatly paved path opens into a beautiful little park featuring barbecue and picnic area, play equipment, a tennis hit-up wall and seating.

The centre piece is a rose garden containing some of Glen Eira's oldest roses — “heritage” varieties of deep red to maroon and gold and yellow blooms — and a pergola draped with wisteria which offers fragrant shelter in the summer months. A large open area is also tucked away in this unique local park.

Melway Ref: 68 D10



## Winner — in more ways than one!

Andy Smith is living proof you can participate in and enjoy sport at any age. Now 87 years old, Andy took up athletics at the age of 50 and is a member and regular competitor with the Caulfield Veterans Athletic Club.

He also has the distinction of competing in all of the last 30 consecutive Australian Veteran

Championships. This is a record in itself, with no athlete able to beat this in the foreseeable future.

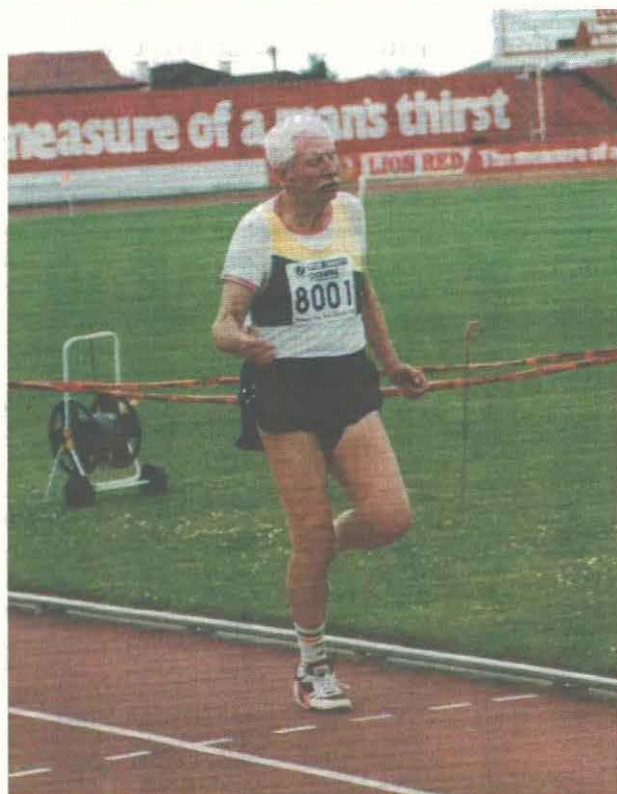
Andy competes in events ranging from 100m to 10kms and in pentathlons and track walks. He trains for 1.5 hours each day, six days a week, at the Duncan Mackinnon Reserve and attributes his health and alertness to keeping fit.

Andy has amassed a huge total of 770 medals and plans to keep competing in the Veteran Athletic competitions.

Caulfield Veterans Athletics Club representative Leo Charles said: “Many of the older Australian athletes are world record holders. Two Victorian veterans are current world record holders, Jan Morrey at 60 years of age holds the 2km world steeple chase record and Mike Johnston at 80 years of age ran a brilliant 400m in a world record time of 72.83 seconds.”

Caulfield Veterans Athletic Club is based at Duncan Mackinnon Reserve and meets every Tuesday night. The club will soon be changing its name to the Caulfield Masters Athletics Club. Anyone aged from 30 years onwards, wanting to get fit for the World Master Games in October or interested in athletics is welcome to join the club.

The club covers all athletic events (sprints to 10km), walking races and field events. No experience is necessary. For further information please contact Leo Charles on 95704082.



Veteran athlete — 87 year old Andy Smith.

## 2002 Sports Breakfast Seminar

Recreation Services will host a breakfast seminar on Thursday 18 July, 7.30am–9am. The seminar is open to all sports clubs in Glen Eira and explores the topic: “Public Liability Insurance and Risk Management”.

If your club is interested in attending, please contact Josie Crea in Recreation Services on 9524 3470 or email [jcrea@gleneira.vic.gov.au](mailto:jcrea@gleneira.vic.gov.au)

## Bowls champs — third year running

The Glen Eira Bowls Club Ladies A1 pennant team recently won the state championship in Horsham. About 40 fellow club members travelled to Horsham to cheer on the team for this two-day event.

Glen Eira played off against 10 country teams and the runner up team from the metropolitan championship, Rosanna. The win for Glen Eira firmly plants the team as 2002 champions following its win in the Metropolitan Championships for the third year in a row.

Team members were very excited with their win and no doubt hope to defend the title next year. The Glen Eira Bowls Club is located at Packer Park.