

Yay! More new playgrounds to come!

2002-03 budget funds Small Playground Acceleration Program

Neighbourhood playgrounds received a much-needed boost in Council's 2002-03 budget. The Public Places Fund includes \$649,000 for improvements to nine playgrounds in the City.

Council's Acting Director Infrastructure Kerry Martin said: "Glen Eira is fortunate to have some outstanding major playgrounds such as Packer Park, Allnutt Park, Harleston Park and McKinnon Reserve. These playgrounds have recently been upgraded and attract residents from all over the City."

Mr Martin said a survey of playgrounds in the City indicated many of them needed to be improved and provided with modern facilities. Council will now embark on a "small playground acceleration program" which will start with nine playgrounds in this financial year. The playgrounds to be upgraded are:

- Colin Street Reserve, Bentleigh East
- Wingate/Brady Reserve, Bentleigh East
- Pell Street Reserve, Bentleigh East
- Gardenvale Park, Gardenvale
- Marlborough Street Reserve, Bentleigh East
- Rosanna Street Reserve, Carnegie
- Elsternwick Plaza, Elsternwick
- EE Gunn Reserve, Ormond
- Mackie Road Reserve, Bentleigh East

Work is scheduled to start this month and all of the playgrounds should be completed by March next year. Improvements will include new play equipment with soft-fall areas, park furniture, paths, drinking fountains and increased planting.



All smiles and cheers for the new playground — photographer Bernie Bickerton caught (from left) Lia, Sara, Jillian, Robyn and Elise on the new bridge at McKinnon Reserve.

Unsafe equipment was removed from several of these playgrounds in the past. Until now, Council has not been able to afford to replace it.

"Residents should keep an eye on these parks — they will provide great play opportunities for families and

children when the work is complete. But we ask for their patience during the playground reconstruction phase, and to keep children clear of any works areas. Council will work to ensure the upgrades are carried out as efficiently as possible," Mr Martin said.

Investing in our City's future

Council is increasing rates to raise more money for investing in capital works, facilities and maintenance. Despite an average increase of 16 per cent, Glen Eira rates are still 12 per cent below the average of its neighbouring cities.

According to government information released earlier this year, Glen Eira had the fourth-lowest rates of the 27 Councils in metropolitan Melbourne.

The cost of day to day services in Glen Eira is still the lowest and Glen Eira City Council continues to be one of the few Victorian Councils which operates debt free.

The 2002-03 budget identified a need for increased expenditure to accommodate a number of factors. Many of the City's assets need replacement or major repair as they are reaching the end of their lives, and funding from both State and Federal Governments has been significantly cut (for example road grants to Glen Eira are down by 35 per cent). Plus, in the past few years, much of the City's capital expenditure has been propped up by asset sales. This source of income has now virtually run out.

Glen Eira's rate in the dollar for 2002-03 has not changed from the 2001-02 year — 4.1271 per cent of Net Annual Value (about 0.002 of the value of the property). At this unchanged rate, increasing property values in Glen Eira would generate an additional \$10.9 million in rate revenue.

Council is returning much of this to the community in the form of two rebates:

- an 8 per cent rebate to all ratepayers (\$3.4 million); and
- a \$110 rebate for pensioners (a total value of \$1.2 million).

About 19 per cent of Glen Eira ratepayers are pensioners. Glen Eira City Council will give the largest pensioner rebate of any Victorian Council.

Council is also calling on Federal and State Governments to return some of their automatic increases in tax revenue to fund local services and facilities.

For a detailed look at what all this means to the ratepayer, see pages 6 and 7 of this issue.

Average rates and charges are going from about \$13 a week to about \$15 a week. The average breakdown is:

	2001-02	2002-03	Change
All Council services	\$6.22	\$6.38	3%
Fire Brigade Levy	30cents	43cents	40%
Insurances	27cents	34cents	25%
Capital works and maintenance	\$4.08	\$6	47%
Waste and recycling	\$2.02	\$2.12	5%

Inside

News:

Capital works	3
Aged care audit	3
Road safety	5
Youth Excellence awards	9

Features:

Council budget 2002-03	6-7
------------------------	-----

Regulars:

Language Line	4
Youth and library news	8
Community Diary	10
Arts	11
Recreation News	12

A message from the Mayor

MAYOR'S column



Setting the 2002-03 Council budget has not been an easy task. None of your nine Councillors is in any doubt that the ageing infrastructure in our City is in desperate need of either replacing or refurbishing. We need a lot of new for old, and it includes just about everything from playgrounds, senior citizen centres, roads, footpaths, and drains to strip shopping centres and sporting and aged care facilities.

Despite all the obvious visible work that needs to be done, one of the greatest challenges we face is an unseen one — our hidden drainage network. Fifty years ago, a street that may have had 40 houses could today have 60 dwellings. And the stormwater from 50 per cent more houses runs into a drainage system designed to cater for runoff from the original 40 houses. This problem is repeated throughout many streets across the City. The cost of sorting this out and upgrading our drainage system is estimated to be at least \$10 million.

The budget debate in Council was not an easy one and there were differing views presented by several of your Councillors. Not differing in terms of what needs to be done to bring our City up to scratch, but differing in how Council should achieve the result we all know we need. The commitment by Council to meet community expectations in terms of providing modern facilities remains firm.

The budget debate is complete and the 2002-03 budget has been set. It is now time to turn the page and get on with the work that needs to be done.

Some significant infrastructure works will now be undertaken over the next 12 months. For instance, some time ago, Council removed a lot of unsafe play equipment from playgrounds across the City but was unable to replace it due to a lack of funds. Now Council has created a small playground acceleration program that will see much of this equipment replaced for the use of our young children.

Funds have been allocated to begin works to implement the master plan already adopted for Bentleigh Hodgson Reserve and funds have also been earmarked for the Princes Park master plan once the public consultation phase has been completed and Council has had time to take on board any feedback received from the community.

A total of \$4.73 million will be spent on roads, drains and footpaths, \$1.44 million on our libraries and \$3.936 million on our aged and disability services.

The debate over the level of the budget will always be a difficult one and this year was no exception. But even given the difficulties faced by Councillors, Glen Eira still remains 12 per cent below the average of our neighbouring Councils.

— Cr Peter Goudge
Mayor

“Clean up the river!” — Crocodile



Crocodile has a nice cup of tea during his show at Bentleigh Library.

It was a morning of fun with crocodiles and witches, and even “Bolty the builder” for about 60 children, and their mums and dads when *Puppetmania* came to Bentleigh Library for the school holiday program.

Ian Cuming, the one-man puppet show from *Puppetability*, entertained young and old with his fantastic show and an array of different characters. The audience was enthralled with the puppets’ story of unhappy Crocodile living in a polluted river until fellow puppet Mr Punch gave him a helping hand to clean it up.

Bentleigh Library Branch Leader Linda Baker was delighted at the turn out for the school holiday session and said “puppet shows are fabulous for children”.

Puppetmania was part of several school holiday programs run at Council’s libraries under the theme of *Holiday Mania Mornings* for children up to 12 years.



Delighted smiles and laughter from a very responsive audience at the school holiday program — *Puppetmania*.

Story: Sophie Aristodemou
Photos: Bernie Bickerton

DISCLAIMER
The information in this publication is of a general nature. The articles contained herein are not intended to provide a complete discussion on each subject and/or issues canvassed. Glen Eira City Council does not accept any liability for any statements or any opinion, or for any errors or omissions contained herein.

Deadlines for Glen Eira News
Deadline for the next issue of Glen Eira News will be **Monday 12 August**. Delivery: 6-8 September.
Coming deadline:
Monday 9 September. Delivery: 11-13 October.
For advertising contact the PR Unit on 9524 3366.
To submit editorial material write to:
Glen Eira News PO Box 42, Caulfield South 3162
or email: editor@gleneira.vic.gov.au

Councillor contacts

JASPER WARD



Cr David Bloom
Phone/Fax: 9597 9825
Mobile: 0417 169 679



Cr Eamonn Walsh
Phone/Fax: 9597 9826
Mobile: 0417 314 233



Cr Rachele Sapir
Phone/Fax: 9579 7218
Mobile: 0409 186 941

MACKIE WARD



Cr Norman Kennedy
Phone: 9564 8395
Fax: 9564 8402
Email: nkennedy@gleneira.vic.gov.au
Mob: 0419 379 540



Cr Veronika Martens
Phone: 9579 0297
Fax: 9579 7072
Mobile: 0419 218 474



Cr Peter Goudge JP
Phone: 9524 3225
Fax: 9524 3358
Mobile: 0419 505 614

ORRONG WARD



Cr Alan Grossbard JP
Phone/Fax: 9533 0052
Mobile: 0407 374 474



Cr Dorothy Marwick
Phone/Fax: 9596 1459
Mobile: 0417 398 250



Cr Noel Erlich
Phone/Fax: 9533 0054
Mobile: 0417 218 485

GLEN EIRA CITY COUNCIL

PO Box 42 Caulfield South 3162 Phone: 9524 3333 TTY: 9524 3496 Fax: 9523 0339
Email: mail@gleneira.vic.gov.au Website: www.gleneira.vic.gov.au

Renewing our City's assets

— Capital works 2002-03

Council will continue its program of asset renewal by spending \$4.73 million on major road, footpaths and drainage projects during the 2002-03 financial year. This program must continue if the community is to enjoy safety and convenience when traveling through the City.

Council's Acting Director Infrastructure Kerry Martin said the program was more than "simply good asset management". He said: "Council's capital works program is necessary for Glen Eira to reduce its public liability exposure. Councils throughout Australia are targets for litigation, which can be very costly to the community. Well-maintained roads and footpaths reduce the risk of injury to the public and the associated personal and monetary costs to

individual members of the public and the community as a whole," Mr Martin said.

The road projects consist of kerb and channel reconstruction and asphalt resurfacing. Reconstruction is needed as a result of gradual deterioration — kerbs become displaced, which causes problems with drainage and difficulties for residents accessing their properties. Road pavements wear out and deform, producing a rough surface with cracking that allows water to enter the pavement base. This in turn causes further deterioration.

"Repairing the City's roads and footpaths on a regular basis is similar to painting the house or servicing the car — if it isn't done, the asset deteriorates and ultimately costs a lot more when it has to be replaced," Mr Martin said.

Drainage projects are selected on the basis of a comprehensive survey and assessment undertaken by consultants in 1996. The survey examined the capacity and condition of the existing drainage system and made recommendations on priority works that needed to be carried out to reduce the risk of flood damage to properties in the City.

Mr Martin said any major works would inevitably cause some disruption and inconvenience to residents, but he said every effort would be made to keep this to a



New footpaths form a major part of Council's capital works budget. Photos: Myrine Hawksworth.



Kerb and channel works and vehicle crossover repairs are essential for the safety of pedestrians and drivers.

minimum. Residents can assist by observing road works signs and directions from workers on site. He said disruption would be short term and the end result of better roads and drainage systems would be worth the minor inconvenience.

Capital works projects

Council — continued commitment to aged care

Aged care support visits conducted over the last few months at Spurway and Rosstown Communities, have confirmed Glen Eira City Council's commitment to providing quality aged care.

The visits, which were undertaken as a follow up to aged care audits conducted in August 2000, and made to 29 facilities across Victoria, have placed Council's aged care facilities among those which comply with all required standards.

On completion of the support visit, the Aged Care Agency auditor said: "It was clearly evident from the first audit and now from the subsequent support visits, that Council's aged care facilities are driven by quality service and resident needs."

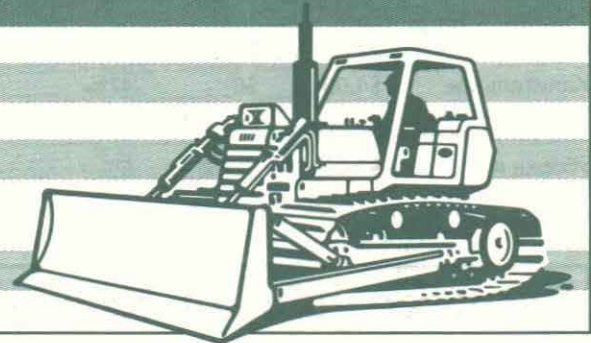
In his report, the auditor said: "Spurway Community is active in identifying areas for improvement and implementing positive change... The organisation's willingness to accept and develop ideas from within is demonstrated..." and "Residents and relatives spoke of the willingness of the service to accommodate differing requirements of residents in relation to matters of daily living."

His report also said: "Rosstown Community is pursuing continuous improvement in a number of ways and has delivered tangible improvements for residents..." and "Residents were consistent in their praise for the level of care and services provided at Rosstown and were appreciative of the recent changes to the environment."

The aged care agency concluded that Glen Eira City Council's aged care facilities continue to meet all standards and also actively pursue and implement continuous improvement.

Major capital works projects for 2002-03

Street	Suburb	From:	To:
• Kerb and channel reconstruction and asphalt resurfacing			
Kooyong Road	Caulfield North	Inkerman Road	Alma Road
Kooyong Road	Caulfield North	Alma Road	Dandenong Road
York Street	Caulfield South	Clarence Street	Trevelyan Street
Prentice Street	Elsternwick	Kooyong Road	Morton Street
Marara Road	Caulfield South	Bambra Road	Narrawong Road
Narrawong Road	Caulfield South	Marara Road	Eumarella Road
Moira Avenue	Carnegie	Neville Street	Munro Avenue
Malane Street	Caulfield South	Foch Street	Beatty Crescent
Oakdene Crescent	Murrumbeena	Blackwood Street	Murrumbeena Road
Kokaribb Road	Carnegie	Neerim Road	End
Gloucester Court	Murrumbeena	Dalny Road	Beauville avenue
• Drainage system improvements			
Kean Street	Caulfield South		
Elizabeth Street	Elsternwick		
Chalmers Street	McKinnon		
Bolinda Street /			
Bentleigh Reserve	Bentleigh		
Bristol Street	Bentleigh East		
Poath Road	Murrumbeena		
Leigh Street	Bentleigh East		



Lighting up the situation

Council has received \$70,000 under the State Government's Blackspot program to install mast arms on traffic signals at three accident hot spots in Glen Eira.

The mast arms will be installed on traffic lights in Hotham Street, St Kilda East (at the Inkerman Road intersection); Glen Huntly Road, Glen Huntly (at the intersection of Booran Road); and Neerim Road, Murrumbeena (at the Poath Road intersection).

Council's Group Manager Statutory Services Duncan Turner said mast arms helped drivers to see traffic

signals more clearly, by placing the signals at a higher and more visible position above the road.

"These mast arms will help reduce the likelihood of collision by making the signals more visible. Collisions occur when drivers don't see or don't observe the lights," Mr Turner said.

This grant follows previous Blackspot funding of \$25,000 to install a mast arm with back-to-back signals on Neerim Road, Carnegie, at the Koornang Road intersection.



Language Line



Επενδύοντας στο μέλλον της Δημαρχίας μας

Το Δημαρχείο αυξάνει τα δημοτικά τέλη για να συγκεντρώσει περισσότερα χρήματα για να επενδύσει σε δημόσια έργα, εγκαταστάσεις και συντήρηση. Παρά την κατά μέσο όρο αύξηση ύψους 16 τοις εκατό, τα δημοτικά τέλη της δημαρχίας Glen Eira είναι ακόμη 12 τοις εκατό χαμηλότερα του μέσου όρου των γειτονικών δημαρχιών, και σύμφωνα με τα Κυβερνητικά στοιχεία, το τέταρτο χαμηλότερο από τα 27 Δημαρχεία στη μητροπολιτική περιοχή Μελβούρνης.

Ο μέσος όρος δημοτικών τελών και χρεώσεων αυξάνονται από \$13 δολ. την εβδομάδα σε \$15 δολ. περίπου την εβδομάδα. Ο μέσος όρος κατανομής είναι:

	2001-02	2002-03	Αλλαγή (%)
Όλες οι Δημαρχιακές Υπηρεσίες	\$6.22	\$6.38	3%
Φόρος Πυροσβεστικής Υπηρεσίας	30 σέντς	43 σέντς	40%
Ασφαλιστικά	27 σέντς	34 σέντς	25%
Δημόσια έργα και συντήρηση	\$4.08	\$6	47%
Απόβλητα και ανακύκλωση	\$2.02	\$2.12	5%

Наш муниципалитет: инвестиции в будущее

Муниципалитет повышает ставки муниципального налога на недвижимость, чтобы иметь больше средств для проведения капитального строительства, содержания сооружений, оборудования и для технического обслуживания. Несмотря на повышение ставок налога в среднем на 16%, в муниципалитете Glen Eira они все еще на 12% ниже, чем в соседних муниципалитетах. Кроме того, согласно информации правительства штата, Glen Eira находится на четвертом месте среди муниципалитетов Мельбурна с самым низким уровнем налогов на недвижимость.

В среднем налог на недвижимость и другие платы увеличиваются от \$13 до \$15 в неделю. По отдельным пунктам:

	2001-02гг.	2002-03гг.	Прирост (%)
Все муниципальные услуги	\$6.22	\$6.38	3%
Пожарная безопасность	30 центов	43 цента	40%
Страховка	27 центов	34 цента	25%
Капитальное строительство и техобслуживание	\$4.08	\$6	47%
Уборка и переработка мусора	\$2.02	\$2.12	5%

Resource guide on its way

The Glen Eira City Council and Community Resource Guide 2002-03 will be delivered free to all residents in the City during next week.

This annual resource guide comprises Council information, community group listings, sports clubs, schools, and services and organisations, and will be delivered with a copy of Council's Safe Food Guide, listing all food premises in the City which have earned a 4 or 5 star rating in Council's Food Safety Audit.

If you have not received your free copy of the Guide by Friday 23 August, contact Council's Service Centre on 9524 3333.

Τα δημοτικά τέλη της δημαρχίας Glen Eira σε ποσοστά δολαρίων για το 2002-03 δεν έχουν αλλάξει από το 2001-02 έτος - 4.1271 τοις εκατό της Καθαρής Ετήσιας Αξίας (περίπου 0.002 της αξίας του ακινήτου). Μ' αυτό το αμετάβλητο ποσοστό, η αύξηση της αξίας των ακινήτων στη δημαρχία Glen Eira θα προσκομίσει ένα επιπρόσθετο ποσό εσόδων \$10.9 εκατομμυρίων από τα δημοτικά τέλη.

Το δημαρχείο επιστρέφει ένα μεγάλο ποσοστό αυτών των εσόδων στην κοινότητα υπό τη μορφή δύο εκπτώσεων:

- μια έκπτωση 8 τοις εκατό σ' όλους τους δημότες που πληρώνουν δημοτικά τέλη (ένα ποσό ίσο με \$3.4 εκατ. δολ.) και
- μια έκπτωση \$110 δολ. για συνταξιούχους (συνολικής αξίας \$1.2 εκατ. δολ.).

Επίσης, το Δημαρχείο κάλεσε την Ομοσπονδιακή και Πολιτειακή Κυβέρνηση να επιστρέψουν μερικές από τις αυτόματες αυξήσεις φορολογικών εσόδων για τη χρηματοδότηση των τοπικών υπηρεσιών και εγκαταστάσεων.

Για περισσότερα στοιχεία βλέπε στις σελίδες 6 και 7.

В муниципалитете Glen Eira ставка муниципального налога на недвижимость как процент от чистого годового прироста в 2002-03гг. по сравнению с 2001-02гг. не увеличилась — 4.1271% (примерно 0.002 стоимости недвижимой собственности). При этом неизменном проценте, дополнительные \$10.9 миллионов будут собраны только за счет роста цен на недвижимость в муниципалитете.

Значительную часть этой суммы муниципалитет возвращает налогоплательщикам в виде двух скидок:

- 8% скидка всем налогоплательщикам (примерно \$3.4 миллиона);
- \$110 скидка для пенсионеров (примерно \$1.2 миллиона).

Муниципалитет также призывает правительство штата и федеральное правительство использовать часть естественного прироста собираемых ими налогов для финансирования муниципальных нужд.

Дополнительная информация на стр. 6 и 7.

Investiamo nel futuro della nostra Città

Il Comune sta aumentando le imposte comunali per procurare denaro da investire in lavori essenziali, amenità e manutenzione. Nonostante un aumento medio del 16 per cento, le imposte di Glen Eira rimangono il 12 per cento al di sotto della media dei comuni contigui e, secondo informazioni ricevute dal Governo, sono al quarto posto tra le più basse imposte dei 27 Comuni entro la zona metropolitana di Melbourne.

Le imposte e i costi medi aumenteranno da circa \$13 alla settimana, a circa \$15 alla settimana. La ripartizione media è:

	2001-02	2002-03	Cambiamento (%)
Tutti i Servizi del Comune	\$6.22	\$6.38	3%
Imposta per i Vigili del Fuoco	30cents	43cents	40%
Assicurazioni varie	27cents	34cents	25%
Lavori essenziali e manutenzione	\$4.08	\$6	47%
Rifiuti e riciclaggio	\$2.02	\$2.12	5%

Il tasso relativo al dollaro delle imposte di Glen Eira per il 2002-03 non ha subito cambiamenti dal 2001-02 — 4.1271 per cento del Valore Annuale Netto (circa 0.002 del valore della proprietà). A questo tasso inalterato, l'aumento di valore delle proprietà di Glen Eira potrebbe generare \$10.9 milioni addizionali di reddito derivato dalle imposte.

Il Comune rende la maggior parte di queste entrate alla comunità sotto forma di due riduzioni:

- una riduzione dell'8 per cento a tutti i contribuenti (l'equivalente di \$3.4 milioni); e
- una riduzione di \$110 per i pensionati (per un valore totale di \$1.2 million).

Inoltre, il Comune sta sollecitando il Governo Federale e Statale perchè restituisca alcuni degli aumenti fiscali automatici imposti, per sovvenzionare i servizi e le amenità locali.

Vedere le pagine 6 e 7 per maggiori dettagli.

投資於市政區的未來

市政府正在提高市政稅，以增加資金，用於投資基本建設工程、設施和維修。雖然平均提高16%，但 Glen Eira 的市政稅仍然低於鄰近市政區平均市政稅的12%。根據政府的資料，Glen Eira 的市政稅在墨爾本27個市政區中列最低第四位。

平均市政稅從每星期\$13將提高到每星期\$15左右。市政稅各部分如下：

	2001-02	2002-03	變動率 (%)
所有市政府的服務	\$6.22	\$6.38	3%
消防稅	30分	43分	40%
保險	27分	34分	25%
基本建設工程和維修	\$4.08	\$6	47%
垃圾和回收	\$2.02	\$2.12	5%

Glen Eira 2002-03 年度的市政稅每元稅率實際與 2001-02 相同 - 即淨年值的 4.1271% (約為房地產價值的 0.002)。如果此稅率不變，Glen Eira 房地產價值的上升將提高市政稅收入 10.9 百萬澳元。

市政府正在將大部分增加的市政稅收入以兩種減免的方式歸還於社區：

- 所有市政稅納稅人將得到 8% 的減免 (相當於 3.4 百萬澳元)；及
- 養老金領取者將得到 \$110 的減免 (共 1.2 百萬澳元)。

市政府還將要求聯邦政府和州政府歸還自動增加的部分稅務收入，用於資助地方服務和設施。

詳情請見第 6 頁和第 7 頁。

Glen Eira
BusEd
— bringing business and education together

Glen Eira City Council and Monash University present:
Dinner Seminar Series 2002
Success in business — how to make it happen
Thursday 22 August at 6pm

Key note speakers: Max Coulthard, Department of Management, Monash University
Max Buontempo, Managing Director, Roma Foods
Andrew Blair, Principal, Mount Eliza Secondary College

A chance to review your current approach to achieving wealth and business success. Successful entrepreneurs in both the profit and education sectors will explain how they achieved success using innovative planning and implementation techniques.

Venue: Auditorium, Glen Eira Town Hall, corner Glen Eira and Hawthorn Roads, Caulfield.

Cost: \$25 (incl. GST)
Includes three course dinner.

Bookings and payment by 19 August.
Contact: Service Centre on 952 3333

Facelift for accident hotspot

One of Glen Eira's most frustrating and accident-prone intersections has been transformed, with the completion of major improvement works last month.

Traffic lights which incorporate a pedestrian crossing have been installed at the Centre and Brady Roads intersection, in Bentleigh, to improve safety for motorists turning out of and into Brady Road and pedestrians crossing Centre Road.

About 25,000 cars travel through the intersection every day, including buses and pedestrians. It has been the site of seven casualty accidents over five years, prompting Council to take remedial action.

The project involved the removal of an existing splitter island in Brady Road, remarking traffic lanes, kerb realignment and relocation of an electricity pole and stormwater drain.

Council's Group Manager Statutory Services Duncan Turner said the lack of signals created traffic jams at the intersection, especially during peak periods, creating a real danger for motorists and pedestrians.

"The improvement these lights have made to the flow of traffic since their installation, has been remarkable," Mr Turner said.

The project cost \$180,000 with funding from the State Government's Blackspot program and is just one of many road safety works Council has been carrying out in recent weeks with the assistance of Blackspot funding.

Traffic lights at the intersection of Centre and Tucker Roads in Bentleigh have been remodelled to control the movement of traffic turning right into Tucker Road. Centre Road has also been widened to enable right turn lanes to be installed.

A high number of cross-traffic accidents has prompted new roundabouts to be installed at the Koornang-Leila Roads intersection in Ormond and

Koornang-Oakleigh Roads intersection in Carnegie. Work has almost been completed on a roundabout installation at the intersection of Kambrook and Station Streets in Caulfield North, to improve safety for vehicles turning into and out of Station Street. Council has contributed \$40,000 towards the cost of the Kambrook-Station Streets roundabout.

Another Council-funded project has been the installation of guard railing along the Grange Road frontage to Glen Huntly Primary School, in Glen Huntly. The guard railing replaced old pedestrian fencing which had been partially damaged during a vehicle accident. The work, carried out in consultation with the school, cost about \$30,000.

Traffic islands have been installed in Kambrook and Kean Streets in Caulfield South to restrict the movement of traffic across Glen Huntly Road, from Kambrook to Kean Streets and vice versa. The islands limit cars to left turns in and out of Kean Street. A traffic island has also been installed in Redan Road, Caulfield North, at the Kambrook Road intersection, to improve safety and reduce the speed of traffic in this section of Redan Road.

— Maureen Bathgate



VicRoads Road Safety Co-ordinator Pierre Castelino and Mayor Cr Peter Goudge at the Brady Road-Centre Road intersection.



Roundabout installation almost complete at the corner of Kambrook Road and Station Street, Caulfield North.

Road safety installations

Road safety accolade

Council has been recognised by the State's leading road safety bodies for its commitment to improving road safety in the local community.

Council received a special award from the Victoria Police, Transport Accident Commission, VicRoads, RACV, LG Pro and Municipal Association of Victoria in appreciation of its efforts to reduce road trauma.

Mayor Cr Peter Goudge said Council was committed to making Glen Eira's roads safer for motorists and pedestrians and to encouraging residents to use local roads more safely.

He said Council's *Road Safety Strategic Plan* found that on average someone died every 10 weeks from a road crash in Glen Eira and that 52 per cent of those killed were pedestrians.

"Tackling road safety issues in strip shopping centres and residential streets can be very complex, especially where there are competing interest of road users. Council will continue to address this important issue and make sure Glen Eira is a safe place for all road users," Cr Goudge said.

VicRoads Road Safety Co-ordinator Pierre Castelino said Glen Eira was the first municipality in the Inner South East area to adopt a road safety strategic plan.

"The implementation of this strategy has formed community partnerships with lead agency groups striving to achieve the same outcome of providing a safe City. This will bring positive benefits to the Glen Eira community through engineering, enforcement, education and evaluating road safety initiatives," Mr Castelino said.

Convenor of the Glen Eira Community Safety Committee Cr Veronika Martens said community safety was a major factor for the health and wellbeing of the Glen Eira community.

She said Council had undertaken to provide leadership and facilitate overall co-ordination of

community safety initiatives as part of its civic leadership role.

"Our success in this area relies on Council involving the community in the planning of safety initiatives and working in partnership with key agencies, Victoria Police and VicRoads, to put these plans into action," Cr Martens said.

Since adopting the Glen Eira Road Safety Strategic Plan, Council has implemented many road safety initiatives including:

- installing bicycle lanes on major roads;
- reducing speed limits through the Ormond Shopping Centre in North Road, Ormond;
- undertaking the Safer Routes to Shops Pilot Project in the Ormond Shopping Centre;
- installing a painted pedestrian refuge in the middle of Glen Huntly Road in the busy Elsternwick Shopping Centre;
- continuing to successfully attract Blackspot funding to fix accident trouble spots;
- preliminary work on a Safer Routes to Schools project for schools in the Caulfield North area;
- installing painted pedestrian crosswalks in potential accident zones; and
- installing speed humps near schools.



Painted crosswalks improve pedestrian safety in North Road, Ormond. Photo: Bernie Bickerton.

Advertisement

Members of Victorian Cabinet visit the City of Glen Eira

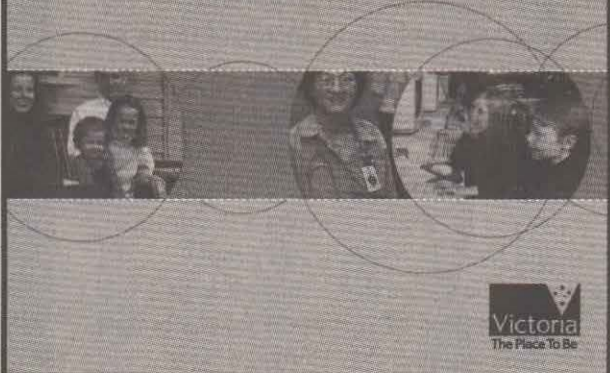
As part of the Bracks Government's commitment to providing decent, responsible government that listens and leads, members of the Victorian Cabinet are visiting your area on Thursday 29 August.

The Ministerial Community Consultation forms part of the Community Cabinet program. It enables communities to take part in the decision making process and gives members of the public the chance to discuss issues of concern with Ministers and hear the Government's vision for the future first hand.

The Ministers will be making a number of visits within the City of Glen Eira during the day as well as taking the opportunity to meet with individual members of the community. On behalf of all Ministers, thank you to everyone who has made arrangements to meet with the members of Cabinet and we look forward to seeing you on the day.

More information

Call Information Victoria on 1300 366 356 (cost of a local call) between 8.30am and 5.30pm Monday to Friday or email comcab@minstaff.vic.gov.au



How does Glen Eira compare to other municipalities?

Compared with any of its peer Councils, Glen Eira City Council will:

- have the lowest expenditure on day-to-day services per property;
- have average rates and charges 12 per cent below the average;
- have 20 per cent fewer "executives" than the average; and
- give the greatest assistance to pensioners of any Council in Victoria.

Plus, Glen Eira City Council will continue to operate debt-free, compared with the \$70 million worth of debt of its neighbouring Councils.

How is the rate amount determined?

Every property in Victoria has been revalued at the direction of the State Government. This means every property owner's rates are likely to change, depending on the movement in the value of their property since the 2000 revaluation. The new valuations are used in two ways — by the State Government to levy land tax and by Councils to levy rates.

Under State Government legislation, the annual rate you pay depends on the value of your property. Your annual rate is calculated by multiplying the Net Annual Value of your property (the estimated annual rental value of the property which for residential properties is fixed at 5 per cent of the capital improved value) by the rate in the dollar. For example:

If the valuation of your property is: \$368,777
 Net Annual Value: \$18,440
 Rate: 4.1271 per cent
 Rates: \$761.04
 Less 8 per cent rebate: -60.88
 Net rates: 700.15
 Waste and recycling charge: 110.00
Total rates and charges: \$810.15

If you are a pensioner, you are eligible for a further Council rebate of \$110.

Glen Eira's rate for 2002-03 has not changed from the 2001-02 year — 4.1271 per cent of Net Annual Value (about 0.002 of the value of the property).

Ensuring value for your rate dollar

Why have rates risen?

Rates have had to increase for three reasons — ageing infrastructure, no further assets to sell, and a significant reduction in support from State and Federal Governments.

Firstly, many of the City's community facilities and infrastructure are now old and, as a result, are at the most "expensive" stage of their lives. The City has an extensive network of footpaths and roads (requiring major drainage, kerb and channel replacement and resurfacing), plus 151 buildings (many requiring facility upgrades and refurbishments), and sufficient parklands to cover 80 MCGs (needing constant maintenance, replanting and, in some cases, equipment and facility upgrades).

If Council does not address the ongoing repair and renewal of these important assets, allowing them to rundown completely and then needing to replace

them outright, will cost significantly more. Hence Council's 2002-03 budget allows for an increase in expenditure on these assets.

Secondly, much of Council's capital expenditure over the last few years has been funded by the sale of the City's assets. Almost \$30 million has been raised by selling off assets that no longer serve the community, or that have been superseded by better facilities.

The sale of these assets has helped keep rates down. Council has averaged about \$5 million of asset sales per year, but there are virtually no more available. With that source of funds gone, capital expenditure needs to come from rates.

Thirdly, Government charges have gone up while Government grants have gone down — a cost to local governments which has to be borne by ratepayers.

For example, part of the Metropolitan Fire Brigade's costs are paid by local Councils, based on a percentage of property values. Because property values in Glen Eira have risen by more than most other municipalities, Glen Eira's share of the MFB's costs has gone up by \$350,000 — equating to an extra 1 per cent of everybody's rates.

Also, Glen Eira's road grants have been cut by more than a third (35 per cent). But the same amount of money still has to be spent on roads. Instead of coming from State and Federal Governments — ie, from taxes the community has already paid — the short fall will have to come from ratepayers.



Replanting programs and development of parks and gardens — part of Council's budget for 2002-03.



"Aging infrastructure" — cracking asphalt and damaged kerb and channel — a major focus of the budget.



"Appearance of public areas" was named as a priority in the Community Satisfaction Survey — Glen Huntly shopping centre works.



Council will upgrade kitchens in community facilities to meet new food safety standards.

Consultation with ratepayers

A number of processes have been carried out by Council to gauge the opinion of the community with regard to capital expenditure, rates and budget determination. Community consultation carried out on the budget and rates has included:

- a public discussion paper entitled *Community Assets — Financial Sustainability* was released in February 2002 and has been published on Council's website for the last five months;
- extensive local media coverage was undertaken; and
- a public forum, organised independently by the Glen Eira Residents' Association, Glen Eira Resident Action Group and Glen Eira Forum was held in April 2002.

belief is supported by the Glen Eira Residents' Association Committee."

In December 2001, Council's Audit Committee made the following comment: "All businesses had to recognise at some stage that investment in existing infrastructure was essential to ensure future sustainability... Demonstrated improvements in community assets should be evidence to ratepayers of good asset management and properly allocated financial resources."

The independent Community Satisfaction Survey undertaken in May 2002, identified the Community's priorities as:

1. recreation facilities,
2. appearance of public areas,
3. economic development, and
4. local roads and footpaths.

These priorities align very closely with those identified as Council's actual priorities, including the emphasis on increased funds for capital works.

Community feedback on the direction Council was taking was also gleaned from the public exhibition of the 2002-03 Draft Budget which was put out for public consultation during May and June. In response, six people addressed the Council at its meeting on 1 July — four expressed their support for the budget, while two indicated they were against it.

Keeping future rates down

Council's financial outlook is set out in the public discussion paper *Community Assets — Financial Sustainability*. It is available for viewing on Council's website at www.gleneira.vic.gov.au and available from the Service Centre by calling 9524 3333.

The City of Glen Eira faces two main financial challenges. The first is its ageing infrastructure, much of which is approaching replacement stage, which will be expensive.

The second challenge is that the City's aged care services are likely to be in ever-greater demand from its growing elderly population.

Council is formulating a long term financial plan which aims to give priority to capital expenditure and is based around two fundamental premises:

- keeping Glen Eira's rates below average, and
- keeping the cost of day to day services in the lowest 25 per cent of the Councils in the region.

The main factor in future rates will be how much Glen Eira receives in State and Federal Government grants.

Glen Eira currently receives the lowest Grants Commission grant per resident of any Council in Victoria — \$15 per person. By comparison, the City of Whitehorse (Box Hill-Nunawading area) receives \$26, Darebin (Northcote-Preston area) gets \$46, and Cardinia (Pakenham area) gets \$70 per person. If Glen Eira City Council received \$26 per person, it would mean an extra \$1.3 million. One of the reasons which is given for the low grant awarded to Glen Eira is that Council could be generating more revenue from rates.

Glen Eira residents and businesses pay more than \$50 million per year in petrol taxes (petrol tax is at least 46 cents per litre), yet Glen Eira's road grants have been cut 35 per cent and are now down to a mere \$740,000 per year. They are projected to be cut further next year.

Rising property values in Glen Eira have driven big rises in Stamp Duty to the State Government. If some of that money was returned to Glen Eira, it could pay for infrastructure works that otherwise ratepayers may have to fund. The graph shows the increasing gap between estimated Stamp Duty collected for the State Government and the rates.

Council is also seeking increased funding for home and community care services (HACC). The program was introduced on an arrangement that Governments would meet 80 per cent of the costs and Council would meet the remaining 20 per cent. However, Government funding has not kept pace, and in real terms Government funding amounts to about 71 per cent, meaning Council foots the bill for up to 29 per cent in order to continue the current level of service.

Upgrades to recreation facilities — the showers at McKinnon Reserve pavilion are refurbished.

Where does the money go?

The approximate distribution on services and capital works for every \$100 of rates is shown in the table below.

Expenditure of rate income — approximate distribution	2002-03
Service type	\$100 in rates
	\$
Roads/drains/building maintenance	8.55
Metropolitan Fire Brigade levy	2.86
Street lighting	1.91
Waste management	1.09
Town planning	5.93
School crossing safety	0.84
Environment health (food etc)	1.91
Building permits and safety	1.11
Traffic engineering	1.07
Local Laws	0.66
Parks and gardens	16.13
Recreation services	0.67
East Bentleigh Swimming Pool	0.39
Caulfield Swimming Pool	0.30
Libraries	6.71
Senior citizens centres	0.46
Older adults programs	0.29
Residential aged facilities	3.74
Home care/meals on wheels/home maintenance/aged care programs	5.75
Youth and children's services	5.42
Maternal and child health	2.41
Arts and culture	1.99
Capital works	29.80
Total	100

Capital spending

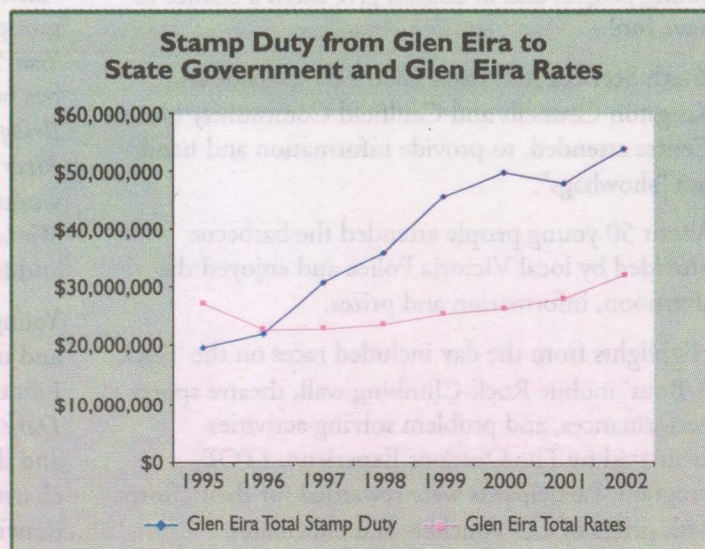
Extra projects in 2002-03 will include:

- demolishing and replacing the toilets at Duncan Mackinnon Reserve (the scene of anti-social activities);
- upgrading kitchens to meet new food safety standards;
- upgrading preschools and children's centres to meet new government standards;
- replacing playground equipment which was removed because it did not meet Australian standards;
- replacing 8000 metres of footpath;
- additional streetscaping of shopping strips;
- swimming pool repairs; and
- disability modifications to community buildings.

COMPARISONS: 2002-03 PROPOSED BUDGETS AFTER INCREASES

	Average rates and charges	Parking fees and fines	Debt	Pensioner rebate	Number of senior executives
Bayside	\$897	\$1.2m	\$18m	nil	14
Boroondara	\$1016	\$4.1m	\$12.7m	nil	30
Glen Eira	\$793	\$2.6m	nil	\$110	14
Kingston	\$740	\$1.7m	\$23m	\$15	15
Monash	\$668	\$2.7m	\$10m	nil	24
Port Phillip	\$940	\$19m	\$11.5m	\$75	20
Stonnington	\$844	\$14.3m	\$14.8m	nil	20
Yarra	\$1106	\$12m	\$21m	nil	17

One of the outcomes of the public forum was a report from the Glen Eira Residents' Association which said: "[there was] unanimity that we must find more money for the City and that the most sensible way to do this is through increased rates on property... This



Glen Eira

Youth News



The *Why? Stop* Youth Information Centre provides free, friendly and confidential support to young people. Find out more about what Council's youth centre has to offer — drop in and meet the youth workers at 54 Rosstown Road, Carnegie (near Carnegie train station).
Phone: 9572 5389
email: ystop@gleneira.vic.gov.au

Developing the "recreation bug"

As a part of the Community Strengthening Initiative, Council's Youth Services is supporting young people in experiencing the benefits of recreation. Two activities, targeting young people aged 9 to 13 years and 14 to 18 years, were held recently.

Hook, line and sinker

The young anglers waited eagerly at the water's edge, sinkers tied, hooks baited and lines cast, reflecting the expertise of 15 minute's practice. They scanned the water for any sign of their prey until a tug on one line indicated a battle was on!

One young fisherman began to reel in, but the catch was feisty. Undeterred, the young fisherman displayed his strength by maintaining a grasp and holding fast to the rod. Triumphant, the line rose from water and the opponent, an 18-inch seaweed patch, lay lifeless on the other end.

Thus began the fishing trip, organised by Council's Youth Services.

David Woods, from *Let's Go Fishing*, provided expert advice and guidance to 10 young people on the banks of the Yarra River.

The highlight of the day was provided by Anton, who caught a bream and, in typical Rex Hunt style, threw it back when it proved undersize.

Choose recreation: Drug Action Week

To acknowledge the importance of Drug Action Week 2002, young people were given the opportunity to be temporarily tattooed, climb an 8 metre wall, sling water bombs at soft toys, have a free barbecue lunch, and be entertained by a number of theatre sports performances.

The activities were part of the TaskForce and Central Bayside Community Health Centre Youth Recreation Day held in June at the Peterson Youth Centre in Highett. The day aimed to promote recreation activities for young people, offer alternative risk-taking activities, deliver drug prevention messages to young people, and of course, give them a chance to have fun!

Youth Services staff from Glen Eira, Bayside and Kingston Councils and Caulfield Community Health Centre attended, to provide information and hand out "showbags".

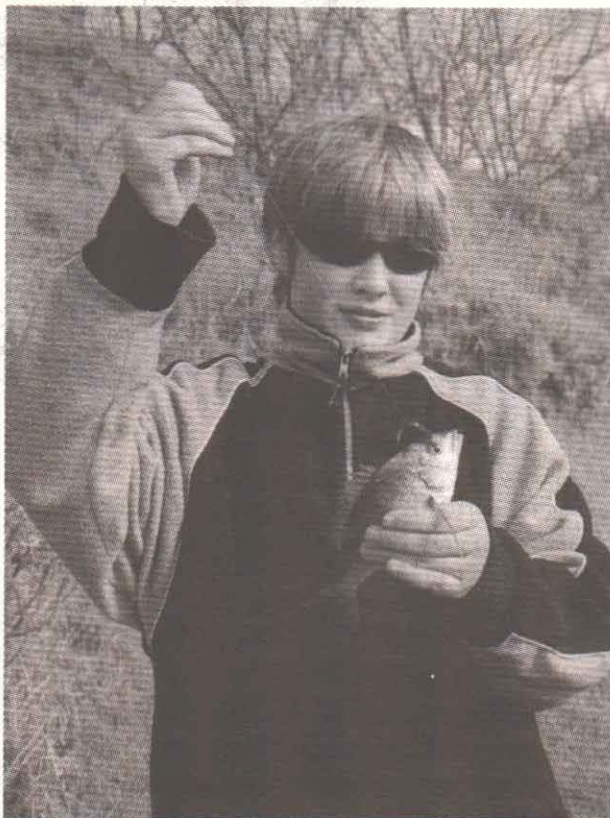
About 50 young people attended the barbecue provided by local Victoria Police and enjoyed the afternoon, information and prizes.

Highlights from the day included races on the 'Rock-A-Bout' mobile Rock-Climbing wall, theatre sports performances, and problem solving activities facilitated by The Outdoor Experience (TOE) program. Participants were rewarded for their efforts with prizes of CD vouchers and chocolates.

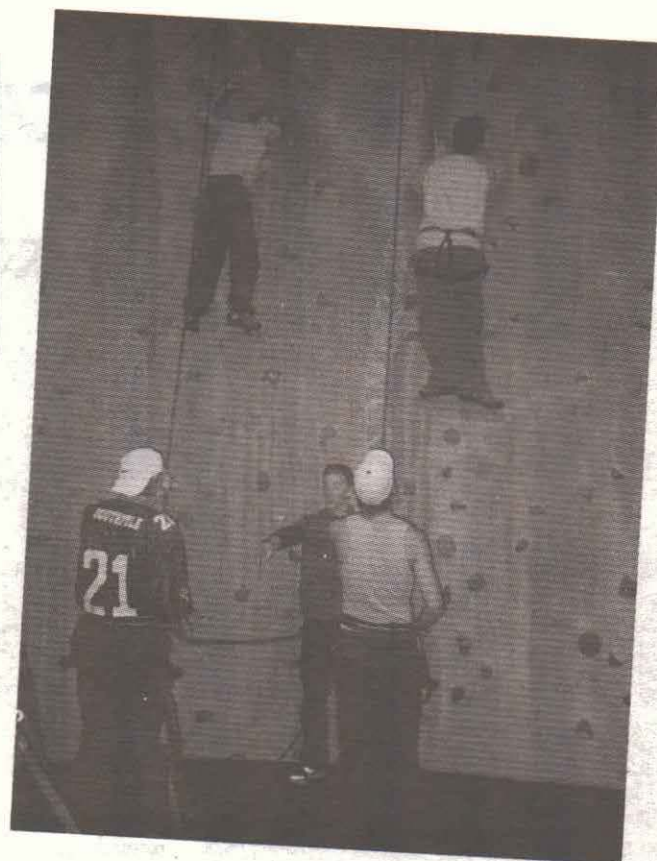
The excursion also included a visit to the Melbourne Aquarium where David led an informative tour. The shark feeding, eel and stingray exhibits were obvious favourites, as was the much-awaited 'Ride the Dive' simulated rollercoaster ride.

by Tess Jenkin

(Youth work experience student from RMIT)



"Catch of the day" — Anton proudly shows off the bream he caught before he throws it back.



Risk taking in safe conditions — young people try rock climbing as part of Council's Community Strengthening Initiative.

Cliffhanger

"Victorious and great!" was how one young person felt after reaching the top of a rock climbing wall at the Hard Rock Climbing Centre in Nunawading. Young people aged 14 to 18 from Glen Eira attended the rock climbing expedition.

The day began with team building activities such as the "team lift" (each person was lifted in turn by the group), a ropes course activity called the "spider-web", and the "arm maze" (the group had to untangle themselves from each other while holding hands).

After safety instructions about the use of equipment and a quick change into rock climbing gear, the group was unstoppable. One young person, Joey, said of the rock climbing shoes: "They look like ballerina shoes!"

All the participants finished the day having discovered new talents, overcome their fears and with a thirst for more.

If you need some support to get involved in recreational activities drop in at the Why? Stop.

LIBRARY News

Children's Book Week

Children's Book Week (17–23 August) is always a busy time at the library. This year three very popular Australian children's authors will speak to school groups. Highly awarded James Moloney will talk to Year 5 and 6 students at Caulfield. James Moloney has been shortlisted numerous times for his books *A Bridge to Wiseman's Cove*, *Swashbuckler*, *The House on River Terrace*, *Gracey*, *Dougy* and *Crossfire*. More recent works include *David*, *The Best Model Maker in the World* and *A Box of Chickens* for the Aussie Bites series and *Blue Hair Day* for the Aussie Nibbles series.

Younger students will have the opportunity to hear and meet author/illustrator Kim Dale at Elsternwick Library, nominated this year for her book *Eyes in the Dark*. At Bentleigh Library Lorette Broekstra author and illustrator of the best-selling *Baby Bear* series will charm Year 1 to 3 students with her stories and drawings.

During the week, the library's popular free storytime sessions will focus on books nominated for Picture Book of the Year and Book of the Year: Early Childhood. Copies of all the nominated books are available at the libraries — ask staff at any of the information desks.

Internet classes for August

Introduction to the Internet

Wednesday 14 August 10.30am–12pm

Monday 26 August 2pm–3.30pm

Cost: \$33

Email

Friday 30 August 10.30am–12pm

Cost: \$33

Further steps on the Internet

Wednesday 21 August 2pm–4.30pm

Cost: \$55

Classes (limit six people) are held in the computer training facility at Caulfield Library. Book at any branch or call 9532 9466 for details.

To find out more about what's on at the libraries or to check the catalogue, visit www.gleneira.vic.gov.au/library

All round world leader

by Sophie Aristodemou

Barely 18 years old, Kate Robson of Caulfield South is a world traveller, talented pianist, medicine student, music theory teacher and a born leader.

What sets Kate apart is being one of two students from Melbourne, and one of 350 worldwide, selected to attend the Global Young Leaders Conference in Washington and New York in July last year.

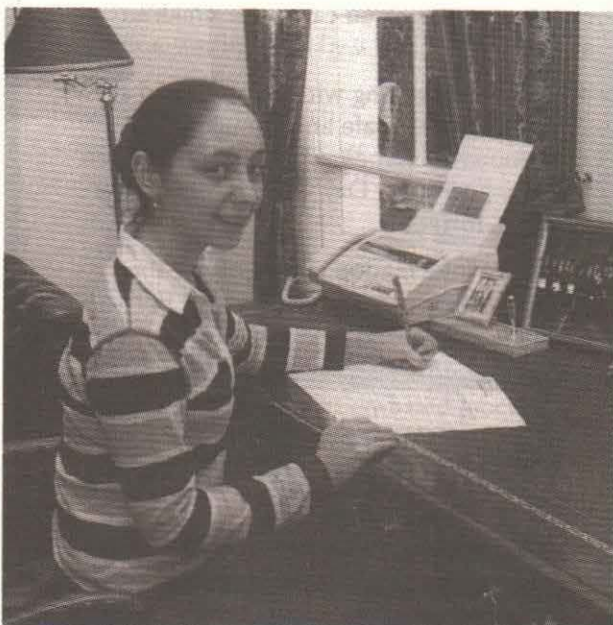
Kate was able to attend the conference with financial assistance from Glen Eira City Council's Foundation for Youth Excellence. She was among 18 recipients of the awards, recently acknowledged at a ceremony at the Town Hall.

Recognised for her excellence in leadership, Kate was one of the keynote speakers at the ceremony. She took the opportunity to share her experience and said the conference had given her valuable insights into world issues, confidence to speak effectively to a large group, and a new range of aspirations and ambitions.

As part of the conference, the students were asked to participate in an international crisis scenario where they had to work together with students from other nations to solve the crisis. Kate's role was diplomat to Nigeria.

She formed valuable friendships with the other students with whom she is still in contact via email. She said: "The conference was much more than an educational program. It was an opportunity for 350 students from 48 different countries to come together."

As a result of attending the conference, Kate's goal is to achieve personal excellence in all aspects of her life and to endeavour to become an informed, contributing member of the world community. She believes she has already begun to achieve this and is more aware of what's happening on a global scale.



The world at her feet — Foundation for Youth Excellence Award recipient Kate Robson.

Youth excellence awards

Council held its annual Foundation for Youth Excellence presentation evening recently in recognition of the achievements of 18 young people from Glen Eira.

The Foundation for Youth Excellence program acknowledges young people who aim to achieve excellence in their chosen fields of creative and performing arts, education, leadership or sport. Since the establishment of the program in 1993, 132 grants have been awarded.

This year's recipients attended a range of events at state, national and international levels including the Australian Teachers of Dance Australasian Scholarship Competition; the International Choral Festival in Canada; the International Student Exchange Program in the United States; the World Goju-Kai Karate Championships in Perth; the National Gymnastics Championships in Melbourne; the Australian National Ice Hockey Championships in Adelaide; and the International Sport Federation for persons



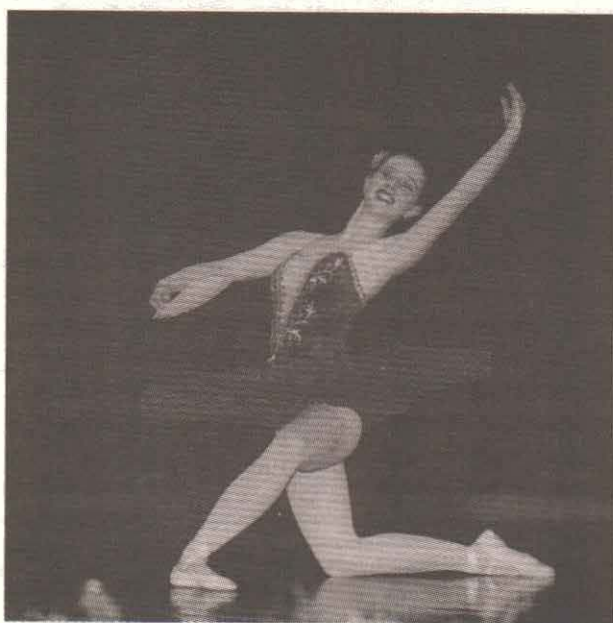
Eleven of the 18 recipients of the Foundation for Youth Excellence Awards. Photo: Bernie Bickerton.

with an intellectual disability World Basketball Championships in Portugal.

The presentation evening included performances and presentations by four of the award recipients. Kate Robson talked about her experiences at the Global Youth Leaders Conference and Shaynee Gomolinski performed a rendition of one of the dances she performed during the Japan Dance Spectacular. Peter McKinsley spoke of his time at the World Floorball Championships and demonstrated floorball skills and techniques and dancer Alexandra Smith performed a neo-classical ballet piece to the song *Breathe*.

Cr Veronika Martens, who represented the Mayor at the presentation evening, said Council saw the award ceremony as an opportunity to reaffirm its commitment to the support of young people. She said it was an opportunity for the young people of Glen Eira to showcase and celebrate their talents and for Council to give them further encouragement.

"The commitment, energy and enthusiasm of the award recipients is to be commended. Excelling at something doesn't just happen overnight. It requires hard work, dedication and support from all levels of the community," she said.



Foundation for Youth Excellence award recipient Shaynee Gomolinski performs at the ceremony.

Recycling — what can you do to help?

Council's kerbside recycling service, introduced in March this year, is already making a huge impact on the amount of material being recycled, especially paper. Residents can contribute to reducing waste in Glen Eira and support Council's commitment to waste minimisation and environmental sustainability by taking advantage of this service.

Two crates are used, one for paper and cardboard and the other for plastics, glass, aluminium and steel cans, and liquid paper board. Residents are reminded not to mix the crates.

Plastic recycling

In Australia, about one million tonnes of plastic products are produced each year. About 40 different plastics or polymers are currently in use, each with a different chemical composition and set of properties, which make a particular type suitable for certain applications.

To assist with the identification of different plastics, manufacturers stamp a plastics identification code on all products — a number inside a triangle of arrows. Although it resembles the common recycling symbol, the code serves only to identify the product and doesn't indicate that the product can be recycled.

Theoretically, most plastics can be recycled but due to the associated costs, it is only economically viable to recycle three types of plastic from domestic sources.

- ♻️ PET (Code 1 — Polyethylene terephthalate) eg, soft drink bottles.
- ♻️ HDPE (Code 2 — High density polyethylene) eg, milk and juice bottles.
- ♻️ PVC (Code 3 — Polyvinyl Chloride) eg, juice and cordial bottles.

Remember to wash and squash bottles and remove lids and caps before leaving bottles out for collection.

For details of recycling and waste services in Glen Eira, visit Council's website www.gleneira.vic.gov.au or refer to *Keeping Glen Eira Clean* the Waste Services Information Guide 2002.



Only Code 1, 2, or 3 plastics should be put out for collection. Photo courtesy of EcoRecycle Victoria.

Glen Huntly Friendship Group
99 Grange Road, Glen Huntly
Activities for August
Enquiries and bookings Margaret 9596 6124

Please note: Change of regular day from Wednesday to Thursday. Thursday 15 August. Sit back and thoroughly enjoy *I am Sam* at the Waverley Cinema. Highly recommended, *I am Sam* is a compelling, powerful, emotional film about love, parenthood and the bonds of family. A luncheon of freshly cut sandwiches, cream cakes, tea and coffee is provided after the film. Twenty people required for discounted fee of \$9.95. Pick up at Grange Road at 9.15am.

Youth excellence awards

COMMUNITY *Diary*

Meetings and clubs

4th Caulfield Clubs and Scouts meets weekly in Birch Street, Caulfield South. Activities and weekend camps for girls and boys. Cubs: aged 7½ to 10. Scouts: aged 11 to 14.
Contact: Jo or Steve 9505 6995.

Caulfield Life Activities Club will meet at Gladys Machin Hall, Cedar Street, Caulfield on Wednesday 21 August at 7.30pm. Guest speaker. Supper served. New members welcome. Contact: 9568 5849.

Club 66 holds old time, modern, new vogue dances, live band, at Benteigh Uniting Church Hall, Centre Road, Benteigh (opposite RSL) on the first and third Saturday of each month at 8pm. All ages welcome. Cost: \$6. Contact: Margaret 9587 1092.

Royal Children's Hospital Auxiliaries (Caulfield Branch) meets at the Alma Club, 1 Wilks Street, Caulfield North on the third Wednesday of each month at 1pm. New members welcome.
Contact: Olive 9578 2395 or Patricia 9571 2666.

Lupus Awareness Support Group for patients and supporters meets at the Rosstown Hotel, Princess Highway, Carnegie on Sunday 1 September.
Contact: 9574 9132.

Caulfield-Carnegie Cycling Club will hold indoor cycling training at Packer Pavilion, Leila Road, Carnegie on Monday and Wednesday evenings.
Contact: Cathy Watt or Carey Hall 9557 0555 or 0412 267 066.

Over 40s Club dance — all ages — old time, modern, new vogue at Ormond Uniting Church, corner North and Booran Roads, Ormond on second and fourth Saturdays of each month at 7.45pm. Supper and live music. Cost: \$7.
Contact: 9570 4564.

Benteigh Life Activities Club offers opportunities to meet new friends and enjoy social activities. New members welcome.
Contact: 9557 2562 or 9563 2554.

Ormond Senior Citizens' Club offers cards, indoor bowls and table tennis at 2 Newham Grove, Ormond, Mondays to Thursdays and Saturdays 1-4pm.
Contact: 9578 7653.

Events

The National Trust Mansion Labassa will hold an open day at 2 Manor Grove, North Caulfield on Sunday 25 August. Tickets at the door. Afternoon tea available in the old servants' quarters. Parking in Orrong Road. Contact: 9527 6295.

Adelphi Players Theatre Company presents *Double York* by Hugh and Margaret Williams at Labassa, 2 Manor Grove, North Caulfield on Friday 30 August and Saturday 31 August at 8.15pm and Sunday 1 September at 2.15pm. Bookings essential.
Contact: 9690 1593 or 9578 0952.

Hughesdale Art Group will hold a demonstration on Artistcare products at Hughesdale Community Centre, corner Poath and Kangaroo Roads, Hughesdale on Wednesday 28 August at 7.30pm. Visitors welcome. Contact: Pat 9885 6407.

Godfrey Street Community House will hold a Sustainable Community Market at 9 Godfrey Street, Benteigh on Sunday 25 August 10am-1pm. Good quality home produce and handcrafts. For stall hire contact: Frances or Jennifer 9557 9037.

Cut this out now! Place under a Fridge Magnet & ← STEEL FRAME WINDOWS (KM)

- Old winders repaired and serviced
- Windows unstuck • Locks
- New winders supplied and fitted
- Old stays converted to winders

*20 years' experience
On site service only*

For the "Rolls Royce" of winders phone:

Acorn Winder Replacements

0418 312 615 — Telephone: 9882 5966
56 Auburn Grove, East Hawthorn

JUDO YAMADA JUDO ACADEMY

Caulfield Recreation Centre
6 Maple St, Caulfield South
9578 4460

Self defence, Concentration,
Discipline, Co-ordination, Self-esteem,
Enjoyment, Stress Release
BEGINNERS TO BLACK BELT — From 4 years old

Anthony's Conveyancing

Buying or selling. Houses or land
(solicitor supervised)

Phone 9571 1073 anytime

Open till 7pm weekdays
(By appointment weekends)

77 Grange Road, Glen Huntly 3163
(Corner Neerim Road)

Broken Cords or Balances

IN DOUBLE HUNG WINDOWS

- ◆ Bottom sash (2 cords) from \$40
- ◆ Both sashes (4 cords) from \$50
- ◆ Tubular balances from \$55 per pair
- ◆ Pensioner discounts available

Price depends on size, condition and number
Also ◆ Fit heavier counter weights
◆ Convert concealed to tubular balances

**John Moline:
9822 3470 AH**

Cut out this ad and keep for future reference

Community Diary is a free listing for non-profit organisations. Submissions must be made in writing to: Glen Eira News, PO Box 42 Caulfield South 3162.

Deadline for next Community Diary is Monday 12 August for publication 6-8 September.

Immunisation dates for August

Murrumbeena Baptist Church

44 Murrumbeena Road, Murrumbeena
Monday 12 August 10am-11am

Glen Eira Town Hall

(entry via Glen Eira Road)
Corner Glen Eira and Hawthorn Roads, Caulfield
Tuesday 13 August 9.30am-10.30am
Tuesday 3 September 6pm-7.30pm

Benteigh-Bayside Community Health Service

Gardeners Road, Benteigh East
Wednesday 21 August 6pm-7pm
Saturday 24 August 9.30am-10.30am

Glen Huntly Maternal and Child Health Centre

Corner Royal and Rosedale Avenues, Glen Huntly
Wednesday 28 August 9.30-11am

Benteigh Baptist Church

10 Vickery Street, Benteigh
Monday 2 September 1.30-2.30pm

Glen Eira Family Day Care

City of
GLEN
EIRA

(Home-based child care)

Have you considered caring for children at home?

If you enjoy working with children and are able to provide a safe and stimulating environment for their early childhood, then becoming a Family Day Care care provider could be for you.

For more information about joining the network of care providers, contact Bernadette Allan on 9524 3251.

Christianity begins where religion ends!



Sundays at 10.30am
Modern Worship

**St Mary's Anglican
Church**

281 Glen Eira Road,
Caulfield

(between Kooyong and Orrong Roads)
Enquiries Ph: 9532 8129

GLEN EIRA 2002 BUS TRIPS

Take advantage of low budget bus trips
— organised by volunteers for you.

Travel with an accredited bus company.

Wednesday 21 August, 9am-5pm (approx.) Cost: \$20

PHILLIP ISLAND. We visit the Australian Dairy Centre, Seal Rocks boardwalk (entry to Sea Life Centre available at own expense), Koala Conservation Centre (small entry fee, own expense). Come with us on this trip — breathe fresh sea air enjoy the picture perfect scenery. Bring own food or buy there.

Wednesday 25 September, 9.30am-3.30pm (approx.) Cost: \$25

TRESSELAAR TULIP FARM AT SILVAN. This once-a-year show of massed spring flowers at the famous TESSELAAR FARM is a must for all lovers of beautiful blooms — tulips, daffodils, hyacinths, proteas tell you spring is here. Bulbs and souvenirs for sale.

Bring your own lunch or you can buy delicious Dutch pastries and real coffee. Cost includes bus and entry. Both tours depart from Glen Eira Town Hall and 10 minutes later from Glen Huntly Station (Tram stop 60).

**BOOKINGS: BY PHONE ONLY
Fridays 9am-2pm on 9523 7862.**

ARTS *Arts*

The Three Chinese Tenors

Sunday 25 August at 2.30pm

For the final concert in the Winter Music Series, the Glen Eira Auditorium will resound to the thrilling voices of The Three Chinese Tenors.

Acclaimed as "Australia's answer to Pavarotti, Domingo and Carreras", the three Chinese Tenors came together in 1992 and have become highly sought after for their stirring performances in both Australia and South East Asia.

Each of the three singers are internationally renowned tenor soloists in their own right, having worked in leading opera houses in Australia and the world, including Victoria State Opera in Australia, Beijing Opera, Koln Opera in Denmark and Opera Victoria in Canada.

One of the group's proudest moments came on Australia's National Day celebrations when they performed to an audience of 250,000 at Sydney's Darling Harbour as a part of Sydney's bid for the 2000 Olympics.

The Three Chinese Tenors have become a part of this country's cultural landscape, encompassing a sense of determination and a will to succeed and overcoming barriers of language, race and culture to do what they do best — sing.

Their repertoire includes items such as *La Donna e Mobile* from *Rigoletto*, *Brindisi* from *La Traviata*, arias



The Three Chinese Tenors.

from *Tosca* as well as popular songs from composers such as Bernstein and Lloyd-Webber, and ancient Chinese folk songs.

Tickets: \$25 and \$22 concession (incl. GST)

Bookings: 9524 3333

Venue: Auditorium, Glen Eira Town Hall
Corner Glen Eira and Hawthorn Roads,
Caulfield

Time: 2.30pm–4.30pm

Light refreshments available.

Exhibitions **Glen Eira City Council Gallery, corner Glen Eira and Hawthorn Roads Caulfield.** Hours: Monday to Friday 10am–5pm, Sat/Sun/public holidays 1pm–5pm.

Sally Miller

Opening 6 August 6pm
Continues until 18 August

Sally Miller's latest exhibition was inspired by a visit to Vietnam. The historic structures, which serve as reminders of battles ancient and new, were important sources for Sally in her interest in the existential conditions of life.



Based in the country town of Meredith, Sally Miller finds herself in the perfect backdrop for continuing her inventive and installation-based practice of art making.

Her work often pushes the boundaries that define the way we understand the world. Metaphors of boats, ladders and bridges are recurring themes, alluding to the journey between one state and another, between one place and another, and between one life lived and another.

Sally will bring to Glen Eira City Council Gallery a feast of carefully sourced objects and prints. A wall of darkly pigmented monoprints depicting boats hangs adjacent to the textured rubbings of poles. Wooden and bamboo ladders bound in string or



coated in feathers, will be suspended from the ceiling in a dance between ascent and descent.

This is the kind of work which alters on each inspection; it is a rare blend of historical, psychological and spiritual.

Sally exhibited at Glen Eira City Council Gallery in 2000 when her *Navigating* installation was warmly received and critically praised.

re:invention — Kerrilee Ninnis

Opening 6 August 6pm
Continues until 18 August

As Co-director of The Melbourne School of Art and busy mother of two, Kerrilee Ninnis blends these lives together with a deeply sensitive artistic career.

The role of women has faced major shifts over the past century — the continual metamorphosis from motherhood, to feminist, to professional, has often meant women are balancing many roles, juggling careers and families at the same time.

Kerrilee's photographs and works on paper explore issues of personal identity, sexuality, motherhood and female lineage. Through the use of striking, high contrast black and white photographs of herself and her young daughters, these subtle images present the inner workings of a private world.



This challenging body of work provokes questions about the artist being in control, in relation to the gaze of the camera, while at the same time being the subject. The title, *re:invention*, refers to the need we have to shape and mould the world, and reveals the artist's interest in the subjective nature of change.

B'Nai Brith — Jewish Youth Art Award

21 August–1 September

An annual celebration of the creative talents of Victoria's Jewish youth is again to be staged by the Shalom Unit of B'nai Brith. This exhibition includes a wide range of media from painting, to collage and sculpture, created by young Jewish people aged 11 to 18 years.

Glen Eira City Council Art Collection — Highlights

Opening 21 August at 6pm
Continues until 1 September

Glen Eira City Council has an extensive collection of art works, including works by Arthur Boyd, Brett Whiteley, Leonard French, Charles Blackman, Fred Williams, Syd Ball, Howard Arkley, Roger Kemp, Noel Counihan, Louis Kahan, Ivan Durrant and local artists such as Erica McGilchrist and Felix Tuszynski.

This exhibition will showcase a diverse selection of works from Council's art collection.

Recreation News

Off road bike paths on the way

Construction is underway on bicycle paths through both Bailey Reserve and Oakleigh Road Reserve. The paths are current projects as part of the Glen Eira Strategic Bicycle Plan.

The bike strategy, adopted by Council in February last year after significant community consultation, looks at creating on and off road bike paths such as Oakleigh Road and Bailey Reserves, as well as Marara Road Reserve. Other elements of the strategy include effective signposting and bike parking in shopping strips.

Council is investigating appropriate routes for cyclists to use within parks, and aims to have park space used

in a safe way to allow adequate room for the safety of bike riders as well as other park users.

When implemented, these actions will provide the City with a well-connected network of on-road and off-road cycling routes.

With its flat topography, Glen Eira is ideal for cycling and a number of isolated parks will benefit from improved bicycle and pedestrian links.

Melway refs:
Oakleigh Road Reserve 68 F7
Bailey Reserve 68 K12
Marara Road Reserve 68 C6



GlenWorks staff get an early start on bike path construction in Bailey Reserve. Photo: Bernie Bickerton.

Trail of intrigue

Would you ever build a railway line and an eight storey factory and never use either of them? Impossible you say, who would ever dream up such a crazy idea?

A 19th century entrepreneur called William Ross did just that, and Council's Recreation Services have just completed the Rosstown Rail Trail historic guide which allows people to follow the route and retrace the history of this remarkable story.

In 1883, Ross embarked on building a railway line and an eight storey sugar beet mill in the hope of providing Melbourne with sugar. The railway line ran between Elsternwick and Oakleigh Stations and was officially completed in 1888. But, this railway was never used. The sugar beet mill, built in 1875 in Carnegie, was never used either and was finally demolished in 1908.

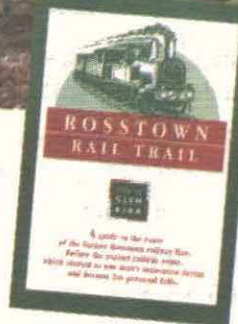
While nothing remains today of Ross' grand scheme, residents and visitors to Glen Eira can retrace this history through the Rail Trail by following plaques and reading the accompanying brochure.

The route is generally flat, following local streets and linear parks, is suitable for all ages, and can be undertaken by bike, car and on foot. The trail takes about 3.5 hours to complete by walking, and finishes



This brass plaque marks the start of the Rosstown Rail Trail from the Elsternwick Plaza, off Glen Huntly Road, Elsternwick.

Inset: Rosstown Rail Trail historic guide.



in the City of Monash. Monash City Council provided valuable assistance in completing the route.

Brochures are available from Council or from the start of the route at Elsternwick Plaza. The brochure can also be viewed on Council's website www.gleneira.vic.gov.au by clicking on "Recreation", and then "Resources".

Phone number correction

The phone number for the Masters Athletics Club at Duncan Mackinnon Reserve was incorrect in the May issue of *Glen Eira News*. The club invites anyone to join them in walking, running and field events every Tuesday night under lights. For more information, contact Leo Charles 9570 4084.

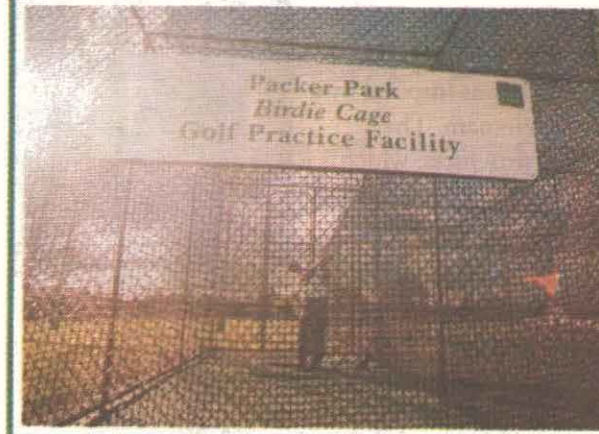
The "birdie cage" — a must for golfers

The Birdie cage in Packer Park (Leila Road, Carnegie) is a totally enclosed golf practice facility, available free for public use during daylight hours.

Playing golf is not permitted in any of Glen Eira's parks because of the danger to other park users. This facility means golfers now have somewhere to practice — the facility provides a mat for golfers to hit off from and a net to hit into.

Golfers have been braving the winter weather to get out and have a few practice swings. No doubt during the warmer months this will become a very popular destination for the City's keen golfers.

Packer Park (Melway Ref: 68 J8)

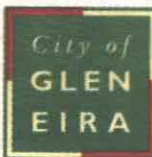


Venues for hire

Are you holding a family reunion, special birthday, wedding, conference, exhibition, anniversary or other event? Then why not consider hiring one of Council's facilities as your next venue? They range in size, are located throughout the City and are clean and comfortable.

The rotundas in Glen Eira's parks are also available for hire for special events. Weddings are often held in these picturesque settings.

For more information go to: www.gleneira.vic.gov.au/facilityhire



GYMBAROO

4 MTHS TO SCHOOL YEARS

COME AND ENJOY OUR:

- Specialised equipment
- Structured program
- Climbing, rolling, balancing & jumping
- Songs, dance and rhythm

Ample & traffic-free parking
Operates: Tues, Wed, Thur & Sat

Moorleigh Community Village Gym
Rob Flavell Wing, (Cricket Gnd End)
90-92 Bignell Rd East Bentleigh
TELEPHONE GAIL 9570 1422