



GLEN EIRA CITY COUNCIL

JULY 2016

VOLUME 217

gleneiranews



Improving energy efficiency in Council buildings

Glen Eira Sports and Aquatic Centre (GESAC) now sports 384 solar panels on its roof, which is among the largest solar power systems on a local government building.

Glen Eira City Council installed the solar power (photovoltaic, PV) system on the roof to increase the use of renewable energy.

Glen Eira Mayor Cr Neil Pilling said GESAC was selected for the installation because of its high energy use.

“Improving energy efficiency in Council buildings is a key part of Council’s *Emissions Reduction Plan*,” Cr Pilling said.

“It is expected that GESAC will be connected to the power grid by the end of July this year and that the solar power system will reduce energy costs by around \$18,000 each year.”

The 384 panel system will generate clean electricity in the order of 151,000 kilowatt hours each year, and reduce greenhouse gas emissions by the equivalent of 205 tonnes of carbon dioxide. This reduction is equivalent to taking 47 medium-sized cars off the roads.

GESAC lighting upgrade

In addition to installing solar panels to further reduce energy use and greenhouse gas emissions at GESAC, lighting in the stadium has been replaced with energy efficient and dimmable LED type lights.

This will see a reduction in energy use by 72,000 kilowatt hours per year and greenhouse gas emissions by the

equivalent of 84 tonnes of carbon dioxide each year. This reduction of carbon dioxide emissions is equivalent to taking 19 medium-sized cars off the road. Energy costs will also be reduced by around \$9,000 per annum. The reduction in energy consumption is expected to be around four per cent.

Cr Pilling said works are also progressing in the pool hall for the replacement of the existing non-dimmable lights with dimmable LEDs.

“Replacing these lights will cut electricity use further and we think it will save GESAC around \$2,000 each year,” Cr Pilling said.

Town Hall upgrade

Solar panels are also being installed on the roof of Council’s second largest energy user, Glen Eira Town Hall.

The installation of 203 solar panels is expected to be completed by the end of June, resulting in a reduction in energy use by 81,000 kilowatt hours per year and greenhouse gas emissions by 109 tonnes of carbon dioxide each year. This reduction of carbon dioxide emissions equates to taking 25 medium-sized cars off the road.

Lighting across Town Hall is also being upgraded and is expected to be completed by the end of June.

Council’s commitment to reducing energy use

In a 2015 telephone survey of 400 Glen Eira households, residents told Council

that it is important to them that Council reduces greenhouse gas emissions from its operations, including cutting electricity use and installing solar power. Eighty per cent of community members responded that it was important or very important.

Council has an ongoing commitment to reducing energy use and greenhouse gas emissions.

Other improvements that have been completed include:

- Bentleigh Library — the replacement of 85 light fittings with LEDs and the replacement of 56 fluorescent tubes with LEDs.
- Carnegie Library — the replacement of 232 fluorescent lamps with LEDs, replacement of 41 downlights with LED’s and the replacement of 68 panel lights with LEDs.
- Caulfield Senior Centre — the installation of a 22 panel solar power system.
- Rosstown Community care facility — the installation of a solar hot water system. Solar hot water systems use the sun’s energy to preheat the water that is fed into a conventional gas hot water system. This has significantly reduced the amount of fossil fuel energy that is used to provide the hot water residents need.

Cover image: GESAC now sports 384 solar panels on its roof.

NEWS

Help us plan Glen Eira’s future

A growing Glen Eira

Know your rates

REGULARS

Youth News

Arts News

Library News

Business News

HIGHLIGHTS

Recreation



Mayor's column

With school holidays here, why not visit Glen Eira Sports and Aquatic Centre? Various school holiday programs, including *Fast-Lane*, will be available. The waterslides will be open 10am to 7pm and the giant inflatable obstacle course from 12pm to 3pm. For the young and the young-at-heart, Pirate's Cove leisure pool will be open from 9am to 7pm. For further information, visit www.gesac.com.au

Glen Eira City Council's Youth Leadership Team is calling on bands, soloists, duos, acoustic acts or vocalists to submit their demo for a chance to play and compete for some awesome prizes in this year's *Sounds of Glen Eira* youth music event.

To enter, send your demo CD and contact details along with a musician or band biography to the Youth Information Centre by Friday 12 August.

Sounds of Glen Eira will be held on Friday 9 September. For further information, contact Youth Services on 9524 3676.

Finally, a new park is being proposed in Caulfield North and Council is seeking feedback from local residents.

Located at the intersection of St Aubins and Fosbery Avenues, key elements of the design include new feature trees throughout the park and streetscape; an elliptical lawn area to provide heat mitigation; and seating overlooking the green space.

Traffic along St Aubins Avenue will be maintained and a decrease in vehicle traffic through Fosbery Avenue will improve local amenity. Access to residential properties will not be impacted.

The project is an action from Council's *Open Space Strategy*. For further information, see page nine.

Cr Neil Pilling
Mayor



COUNCILLOR CONTACTS

TUCKER WARD

Cr Jamie Hyams
Ph: 9578 8314
Mobile: 0427 319 018
jhyams@gleneira.vic.gov.au



Cr Oscar C Lobo JP
Ph: 9557 0108
Mobile: 0417 837 418
olobo@gleneira.vic.gov.au



Cr Jim Magee
Ph: 9524 3225
Fax: 9524 3358
Mobile: 0427 338 327
jmagee@gleneira.vic.gov.au



CAMDEN WARD

Cr Michael Lipshutz
Ph: 9530 0438
Mobile: 0400 832 270
mlipshutz@gleneira.vic.gov.au



Cr Mary Delahunty
Ph: 9523 9105
Mobile: 0427 970 879
mdelahunty@gleneira.vic.gov.au



Cr Thomas Sounness (Deputy Mayor)
Mobile: 0428 596 951
tsounness@gleneira.vic.gov.au



ROSSTOWN WARD

Cr Margaret Esakoff
Ph: 9578 2877
Mobile: 0407 831 893
mesakoff@gleneira.vic.gov.au



Cr Kelvin Ho
Mobile: 0466 399 089
kho@gleneira.vic.gov.au



Cr Neil Pilling (Mayor)
Mobile: 0428 310 919
npilling@gleneira.vic.gov.au



Bentleigh, McKinnon and Ormond open for business

A winter construction blitz to remove level crossings at Bentleigh, McKinnon and Ormond will continue until Sunday 31 July.

Bentleigh, McKinnon and Ormond shopping centres will be open for business during the construction blitz. Remember the importance of local business and remain supportive. While there will be some limited road closures, there will be no major road closures during this period — they are open for business.

Glen Eira City Council encourages community members to continue to think local first and show their support to the many independent local businesses in these centres.

Until Sunday 31 July, replacement bus services will run and stop at all stations between Moorabbin and Caulfield. The buses will operate along Jasper and Grange Roads. An express bus service will also operate along Thomas Street and Bambra Road.

During the rail works, North Road will remain open, with some lane closures at times to enable construction of Ormond Station. There will be a limited number of overnight road closures at McKinnon and Centre Roads. Local buses will be diverted during these times.

CONTACT COUNCIL

Glen Eira Town Hall

Corner Glen Eira and Hawthorn Roads Caulfield
PO Box 42, Caulfield South VIC 3162

Telephone: 03 9524 3333

National Relay Service: A phone solution for people who are deaf or have a hearing or speech-impairment, TTY dial 13 36 77 or Speak and Listen 1300 555 727 or www.iprelay.com.au then enter 03 9524 3333

Facsimile: 03 9523 0339

Email: mail@gleneira.vic.gov.au

www.gleneira.vic.gov.au

Disclaimer

The information in this publication is of a general nature. The articles contained herein are not intended to provide a complete discussion on each subject and/or issues canvassed. Glen Eira City Council does not accept any liability for any statements or any opinion or for any errors or omissions contained herein.

Copyright © Glen Eira City Council 2016

The copyright for all material in this document is the property of Glen Eira City Council (unless otherwise noted). Other than as permitted under the Copyright Act, no part of this document may be reproduced, reused, copied, stored or transmitted in any form without prior written permission from Glen Eira City Council. Contact Manager Public Relations and Marketing on 9524 3333.

When train services resume on Monday 1 August, the level crossings at these three sites will be gone and trains will travel under the roads.

From Monday 1 August until Wednesday 31 August when McKinnon Station is reopened, replacement buses will run from Moorabbin to Caulfield, but only stopping at Bentleigh and Ormond as those stations will not be open until the end of August.

Site information is managed by Level Crossing Removal Authority and can change at short notice. All dates are subject to confirmation. For further information, visit levelcrossings.vic.gov.au



DEADLINES

The deadline for the September edition of *Glen Eira News* is Wednesday 27 July for delivery 29 August to 2 September (weather permitting). For *Community Diary* enquiries, contact 9524 3333 or email gleneiranews@gleneira.vic.gov.au

Keep up-to-date
with Council's news
and events.

Visit:

www.gleneira.vic.gov.au



BENTLEIGH BENTLEIGH EAST BRIGHTON EAST CARNEGIE
CAULFIELD ELSTERNWICK GARDENVALE GLEN HUNTLY
MCKINNON MURRUMBEEBA ORMOND ST KILDA EAST



Help us plan Glen Eira's future

You are invited to a series of public meetings to discuss the development of Glen Eira City Council's *Community Plan 2017-2020*.

The Glen Eira *Community Plan* is a framework that outlines the work that is to be undertaken by Council on behalf of the community over the next few years. It reflects the community's priorities and directions as stated during consultations with residents, Council staff, and groups that work with Council.

Throughout July, Council will be holding a number of public meetings in order to develop its new *Community Plan*. We encourage you to attend and share your thoughts on what the key issues are for our community; and help us develop priorities that will assist in planning Glen Eira's future.

Council's Chief Executive Officer Rebecca McKenzie said the public meetings will be held in different geographical areas around the municipality and within each Council Ward to enable Council to gain an understanding of local priorities.

"The current *Plan* covers a broad range of issues that reflect community views from 2013," Ms McKenzie said.

"A lot has changed since then and it will be interesting to see what really matters to our community at this point in time."

The views and aspirations expressed in the public meetings, along with a range of feedback from other community engagement strategies will be used in the development of the *Plan*.

In addition to these meetings, a telephone survey and focus groups will be held throughout July and August. There will

The views and aspirations expressed in the public meetings, along with a range of feedback ... will be used in the development of the *Plan*.

be opportunities to give your feedback online via Council's *Have Your Say* forum, with different topics of conversation each week of July.

Recent information collected in other consultation forums for the *Planning Scheme Review* and *Disability Action Plan* will be drawn on to enrich the views and opinions expressed in the public meetings.

Come along to one or all of the following sessions.

Public meetings will be held on:

Wednesday 13 July, 7pm-9pm
Bentleigh Senior Citizens Centre
2 Arthur Street, Bentleigh

Thursday 14 July, 10am-12pm
Duncan Mackinnon Reserve Pavilion
Corner North and Murrumbeena Roads,
Murrumbeena

Monday 18 July, 7pm-9pm
East Bentleigh Senior Citizens Centre
1 Derry Street, Bentleigh East

Wednesday 20 July, 7pm-9pm
Caulfield Park Pavilion
Balaclava Road, Caulfield North

Monday 25 July, 7pm-9pm
Carnegie Library and Community
Centre— Boyd Room
7 Shepparson Avenue, Carnegie

Thursday 28 July, 1pm-3pm
DC Bricker Social Room
Beech Street, Caulfield South

Those who attend these meetings will be given the option to be kept up-to-date with the progress of the *Plan*. An overview of the themes and issues identified will be sent to those who leave their contact details at any of the meetings.

If you are unable to make one of the public meetings, you can have your say:



Online at:
www.haveyoursaygleneira.com.au
where you can submit a question; tell us your ideas; or express an opinion via an online forum.



By sending an email to:
mail@gleneira.vic.gov.au



By contacting Council's Community Development Department on:
9524 3333.



There will be an opportunity to comment on the draft *Plan* in early 2017.

Community column

Speaking up for the City

Attendant Support Program at GESAC

Glen Eira Sports and Aquatic Centre (GESAC) has launched a new service — the *Attendant Support Program*.

The *Program* has been designed to provide an inclusive service for all. Participants who require assistance in accessing the aquatics area will be supported by dedicated and qualified staff. Services such as mobility transfers, program support and personal care are all included in this *Program*.

The *Program* is for anyone who would like some level of support whilst accessing the Centre — whether this is due to limitations or merely a lack of confidence in returning to exercise. The gym/health club area is expected to be included as part of the *Program* in the future.

Bookings are essential. The minimum cost per hour is \$35, but can be booked pro-rata if there is a requirement for extra time. For further information or to book, contact GESAC on 9570 9200 or email asp@gesac.com.au

Engaging our community

Settling in information session

Glen Eira City Council's Maternal and Child Health Service provides a free interactive information session focussing on the first four months with your baby. This session is offered on a monthly basis at Glen Huntly Maternal and Child Health Centre.

Topics include:

- Understanding your baby.
- Sleep, crying and feeding patterns.
- Settling strategies.

Everyone in the family is welcome to attend. Bookings are required and your maternal and child health nurse would be happy to make an appointment for you.

Special four-year-old immunisation sessions 2016

Glen Eira City Council's Immunisation Service is offering immunisation sessions for four-year-old children in 2016. These immunisations are recommended to be given just prior to a child's fourth birthday.

All four-year-old children receiving their immunisation will receive a free show bag. Face painting, balloons and magic tricks will keep the kids entertained.

Parents please note: the Australian Childhood Immunisation Register recommends that all childhood vaccinations are completed by four years.

If your child is not vaccinated by four years and one month they will be considered overdue and you will receive reminder letters from Council.



Wednesday 6 July
4pm-6pm

Carnegie Library and
Community Centre
7 Shepparson Avenue
Carnegie

Saturday 6 August
9.30am-11.30am

Bentleigh-Bayside Community
Health Centre
Gardeners Roads
Bentleigh East

Wednesday 7 September
4pm-6pm

Carnegie Library and
Community Centre
7 Shepparson Avenue
Carnegie



CEO's column

When people talk about what they like about living in the City of Glen Eira, one of the key themes is our green, leafy, tree lined streets.

Each year, Council replaces around 1,000 street trees and plants a further 1,000 trees in vacant sites.

Monitoring tree health and replacing trees as they reach the end of their lives are an important part of our role.

In the effort to address common questions raised by residents regarding the management of street trees, we have added some valuable information to our website.

The key topics addressed are:

- When do we remove trees?
- Powerlines and street trees.
- What species are planted and how are they selected?
- When and how are trees removed and when are they replaced?
- Are trees always replaced?

There is also a section on how you can help maintain trees on your nature strip.

To find out more, visit www.gleneira.vic.gov.au/Resident-services/Maintaining-the-City/Street-trees

Rebecca McKenzie
Chief Executive Officer



A growing Glen Eira

Street trees are a major contributor to what makes Glen Eira an attractive place to live, which is why Glen Eira City Council plants more than 2,000 street trees a year.

Council's Manager Parks Services Laurie Unwin said autumn and winter are the busiest time in Council's parks and gardens, with the majority of plantings undertaken at this time of year.

"Planting trees in the cooler weather (April to September) gives them time to become more established before the summer heat arrives," Mr Unwin said.

When Council orders new trees, they are quality checked to ensure they are healthy and well formed. By starting with quality

trees and having a strong establishment care program, Council improves the likelihood of the tree developing into a healthy mature specimen.

During recent years, Council has strived to improve the quality and health of new plantings on nature strips. Residents will notice the addition of water wells (looks like a plastic bucket) around the base of the trees to better direct water to the rootball of the tree. This prepares the tree for summer and helps sustain trees throughout the warmer weather.

Over the last 20 years, Council has increased the number of street trees from 30,000 to more than 50,000.

For further information on Council's

Street Tree Program, contact Parks and Services on 9524 3333 or visit www.gleneira.vic.gov.au



Walk this way

In line with its *Walking Strategy — Towards a Walking Community 2014–17*, Glen Eira City Council has recently progressed traffic signal works at various locations around the municipality.

Works include new pedestrian operated signals in Glenhantly Road (near Hopetoun Gardens) and Orrong Road (near Sandham Street), Elsternwick; and traffic signals at the intersection of Bambra and Neerim Roads in Caulfield. The locations were identified as priority areas in Council's *Walking Strategy* and to address the recent crash history.

The signalisation at the intersection of Bambra and Neerim Roads in Caulfield is federally funded through the *National Black Spot Program*. These traffic lights

will control turning movements at the intersection, and provide Council with the opportunity to provide improved ability for cyclists and pedestrians to cross and negotiate the intersection.

Glen Eira Mayor Cr Neil Pilling said the Glen Eira community should feel confident to walk to and from their regular/favourite hubs, including schools, local shops and open spaces.

"The installation of these recent works will provide safer and easier access for all community members and hopefully increase the number of walking trips undertaken in the City of Glen Eira," Cr Pilling said.

These projects are examples of actions

in Council's *Walking Strategy*. For further information, contact Council's Transport Planning Unit on 9524 3333.



Save money on power bills by installing a FREE water efficient showerhead.

To see if you are eligible to receive this free Council service, contact Energy Makeovers on 1300 788 776 or visit www.energymakeovers.com.au/energy-savers-glen-eira/

Council has contracted with Energy Makeovers to provide the services. All dealings with Energy Makeovers will be confidential and Energy Makeovers will abide by the same privacy obligations that Council has in relation to the information provided to them by residents who use the service.



GLEN EIRA
CITY COUNCIL



Know your rates

Glen Eira City Council will be distributing rate notices in late July.

Rates provide approximately 52 per cent of Council's total annual income. This funds essential services. These include:

- Maternal and child care (pictured below), kindergartens, and services for youth and older citizens.
- Libraries.
- Sporting and recreational facilities such as swimming pools, ovals, parks, gardens and public halls.
- Community arts projects and festivals.
- Recycling and waste collection.
- Town planning and related services.
- Local road maintenance and construction.
- Economic development activity.

State Government introduced a Fair Go Rates System in December 2015. The Fair Go Rates System limits the amount of rates that a council can levy each year.

As a result, Council's 2016-17 Budget is based on a rate increase that is in line with the 2.5 per cent State Government cap. In 2016-17, average rates per assessment are budgeted to be \$1,340. This is a 2.5 per cent increase over the rates per assessment in 2015-16 (\$1,307).

The actual rate increases experienced by individual ratepayers will be different due to this being a municipal revaluation year. In a revaluation year, rate increases are impacted by the average rate increase (2.5 per cent) and the property valuation increases of individual properties relative to the average across the municipality.

Rates are redistributed according to the shift in property values that have occurred in different parts of the municipality. Some ratepayers may experience a change in their rates depending on the type of property they own, where it is located and how its value has moved relative to the average. If your property increased in value

by more than the average within the municipality, your rates will increase by more than 2.5 per cent. If your property value increased by less than the average, your rates will increase by less than 2.5 per cent and may in fact reduce from previous year.

In comparison to the 22 inner metropolitan councils, Glen Eira has the second lowest rates and is charging \$266 per assessment (ie. \$16.6 million) below the average outcome. This means that in comparison to the average inner metropolitan council, Glen Eira has \$16.6 million less per annum for upgrading community assets or providing facilities and services.



Insulate your home to keep out the cold

Did you know that by insulating your ceiling, floors and walls, you could save up to half of what you pay on your energy bills? An insulated home will be cooler in summer and warmer in winter making it less expensive to run all year. On average, 40 per cent of the energy used at home is for heating and cooling. Insulating your ceiling, floors and walls can make a significant difference.

Insulation works by slowing down the transfer of heat from inside to outside and vice-versa. There are two main types of insulation — bulk and reflective. Choosing the right type of insulation depends on the climate you live in and whether you need to keep heat in or out, or both. The best time to install insulation is when you're building or renovating, particularly for wall and floor insulation.

However, it is also possible to install it at a later stage.

For further information, visit Your Energy Savings website at <http://yourenergysavings.gov.au/>



Cannons at Hopetoun Gardens restored

The magnificent cannons at Hopetoun Gardens in Elsternwick have recently returned home following some much needed conservation treatment.

Returned to the northern section of the park after being treated by conservators from the University of Melbourne Centre for Cultural Materials Conservation, the 80-pounder guns are rifled muzzle-loading cannons mounted on wooden Dwarf "C" pivot mounts. The barrels are 160 millimeter (6.3 inches) calibre and each gun weighs a staggering 4,064 kilograms.

But how did they get there?

The cannons were manufactured at the Royal Arsenal, Woolwich, England in 1866 and were purchased by the Victorian Government for the defence of Port Phillip against a perceived threat of attack by Russian warships. Originally installed at Fort Gellibrand in Williamstown, the cannons at Hopetoun Gardens are two of only 25 made.

In September 1908, Caulfield Council mooted the idea of obtaining some

'obsolete guns' from the Defence Department for the new planned park in Elsternwick. It was initially thought that placing the cannons in such a public place would inspire a sense of naval spirit amongst the rising generation.

Cr Dunbar, who put forward the motion, said it would be a fine thing from an educational point of view to have the guns there.

"Boys would learn the necessity for being prepared for the defence of the country." (*Brighton Southern Cross*, 19 September 1908)

The motion was successful and the canons were erected in Hopetoun Gardens in 1910.

A similar 80-pound gun (also made by the Royal Arsenal in the same year), is located at Portland Battery, in Portland south-west Victoria. It is listed on the Victorian Heritage Register as an extremely rare example of 19th century naval artillery and is of scientific (technological) significance.

Although these canons were built to

withstand all types of conditions, like all materials they deteriorate over time. In 2013, Glen Eira City Council engaged with the University of Melbourne's conservators to assess and repair the cannons.

Moved off-site for safe treatment, the first stage was to dismantle the cannons to assess repairs. Missing elements were replicated and degrading iron and wooden elements addressed. The original wooden carriages were stabilised and then repainted according to historical context.

Celebrating their 150th anniversary in 2016, the cannons are now safely preserved for both current and future generations to enjoy.



Image: Hopetoun Gardens c.1920.

Glen Eira's Heritage

ion

should contribute to infrastructure

Space

water, permeability, underground car parking

between zones



Glen Eira Planning Scheme Review

Glen Eira City Council is required to periodically review its town planning policies that shape development and land use in the community. The *Glen Eira Planning Scheme* is a statutory document that guides these policies by outlining the overarching strategic vision for the municipality. It includes State Government provisions, as well as local policies specific to Glen Eira.

The final meeting in a series of community engagement meetings was held on Wednesday 15 June at Glen Eira Town Hall, with more than 70 community members in attendance. Issues and opportunities raised in the previous meetings were summarised, discussed and prioritised.

The final meeting also presented an opportunity for the community to provide feedback on a draft high level work plan for Council's Strategic Planning Department for the next five to 10 years. The draft work plan was formed based on feedback from the community engagement meetings in April and May, and also the written submissions Council received.

The draft work plan could involve any or all of the following:

- Structure plans for activity centres.
- Environmental and sustainability initiatives
- A preferred neighbourhood character local policy.

- Updated heritage provisions and guidelines.
- A Development Contribution Scheme.
- Flood map updates.
- A Municipal Strategic Statement update (after release of 2017 Australian Bureau of Statistics Census data).
- A Local Planning Policy Framework review.

Many of the issues raised throughout the engagement process were not planning scheme issues or were issues that can only be addressed by State Government. These were summarised and presented to the community with the intention of passing these comments onto relevant Council and State Government departments.

A final report is being compiled and will be tabled at a Council Meeting on Tuesday 9 August. Following the meeting, it will then be submitted to Minister for Planning Richard Wynne. Implementation will begin once the report has been submitted via various *Planning Scheme* amendments.

Council would like to thank those who attended the community engagement meetings, submitted feedback, participated in the online survey and contributed to the discussion.

Getting recycling sorted

Although Glen Eira residents are great recyclers, there is room for improvement.

Glen Eira City Council's annual waste audit in 2015 showed that household rubbish bins contained around 18 per cent of items that could have been recycled. This means approximately 5,600 tonnes of material that could have been recycled was sent to landfill.

Group Manager Environmental Strategy and Services Rachel Ollivier said most people know they can recycle newspapers and cardboard, but far fewer realise they can also recycle magazines, envelopes with windows and pizza boxes.

"Roughly 2,500 tonnes of paper, cardboard and cartons that could have been recycled were sent to landfill in 2015," Ms Ollivier said.

"Sending recycling to landfill costs Council and therefore residents a significant amount of money (more than \$200 a tonne) and increases greenhouse gas emissions. It also means valuable materials are buried underground instead of being made into new products."

For a list of what should be recycled and tips, look out for Council's *Recycling in Glen Eira Guide* in your letterbox.

GLEN EIRA CITY COUNCIL

Municipal elections — community and candidate information session



Glen Eira City Council will be hosting a Municipal Association of Victoria (MAV) community and candidate information session on the upcoming municipal elections to be held in October 2016.

The information session will include:

- an introduction to Glen Eira City Council by CEO Rebecca McKenzie;
- information on Local Government;
- what is expected of a Councillor;
- a video presentation of interviews and advice from a variety of Councillors;
- how to nominate as a Councillor and campaign legalities; and
- questions and a discussion in panel format with all guest speakers.

Monday 15 August, 6pm–8pm
Glen Eira Town Hall — Theatrette
Corner Glen Eira and Hawthorn Roads, Caulfield

For further information, contact Council's Service Centre or visit www.gleneira.vic.gov.au/council-elections

Neighbourhood Sustainable Gardening Program

If you are interested in gardening and care about your impact on the environment, Glen Eira City Council is offering a program that may be of interest to you.

To join the *Program*, visit www.gleneira.vic.gov.au/sustainable_garden or contact sustainability@gleneira.vic.gov.au

Council invites you to join its *Neighbourhood Sustainable Gardening Program*. The *Program* will help you tap into and build on the passion, knowledge and skills of other sustainable gardeners in Glen Eira, including schools and businesses.

To help you on your journey, registered gardeners will be sent a welcome pack, which includes a sign that can be attached to your fence and information on related sustainable gardening.



News in brief

Fresh, green and clean

Wednesday 13 July, 7.30pm
Glen Eira Town Hall — Caulfield Cup Room, corner Glen Eira and Hawthorn Roads, Caulfield
Cost: \$9

Discover how to create a clean and healthy home by replacing all of your harmful cleaning products, with four simple steps and five safe ingredients.

In this workshop, green cleaning expert Bridget Gardner will provide you with some easy cleaning tips. You will learn why and how your home can be healthier without disinfectants and you will also make your own green cleaning product to take home.

Bookings: registration and payment must be received prior to the session. No refunds or exchanges. To book online, visit www.gleneira.vic.gov.au or contact Council's Service Centre on 9524 3333.

Glen Eira Working Together Forum: What can I do to stand out in the crowd?

Wednesday 10 August
10am–2.30pm (registration at 9.30am)
Caulfield Park Pavilion — Balaclava Road, Caulfield
Cost: \$15 per person

Community groups will have the opportunity to learn how to stand out in the crowd. Facilitated by organisational consultant Mark Riches, this interactive workshop will focus on networking, partnership and promotional strategies to enhance your group's performance. Come along and be inspired by our keynote speaker, I CAN Network's Chris Varney, and local community groups that will also share their stories.

A networking lunch will be provided.

Further information about the *Forum* will be

included on Council's website and in the August edition of *Glen Eira News*.

Bookings are essential. For further information or to book, contact Council's Service Centre on 9524 3333.

Graffiti removal

The most effective deterrent for graffiti vandals is to remove graffiti promptly. Graffiti removal on private property is the responsibility of the property owner or occupier. Glen Eira City Council's graffiti management officer can provide advice to residents on how best to remove graffiti.

Council aims to reduce the incidents of graffiti by providing:

- A reactive service to remove graffiti from the boundary of private property where visible from a public place.
- A programmed clean-up of graffiti from laneways using supervised Community Correctional Services clean-up teams.
- A free graffiti removal kit for households.

For further information or to make a request for graffiti removal, contact Council's Service Centre on 9524 3333.

For graffiti on other assets, contact the relevant authority:

- United Energy — 13 20 99 for power poles.
- VicRoads — 13 11 70 for traffic control boxes.
- Australia Post — 13 13 18 for Australia Post boxes.

Family Day Care — educators wanted

If you enjoy working with children and are able to provide a safe and stimulating home environment, then Glen Eira City Council would like to hear from you.

Glen Eira Family Day Care is a high quality,

home based child care service providing childcare in the homes of selected educators.

Full orientation and ongoing training and support will be provided.

Glen Eira Family Day Care is registered with the Department of Education and Training (DET) and the Australian Children's Education and Care Quality Authority (ACECQA).



Early childhood qualifications are essential and applicants need to be residents in the City of Glen Eira.

For further information, contact Council's Family Day Care Co-ordination Unit on 9524 3333 or email fdc@gleneira.vic.gov.au

out and about



Final Glen Eira Planning Scheme Review meeting at Town Hall — community member; Glen Eira Mayor Cr Neil Pilling; and Glen Eira City Council CEO Rebecca McKenzie.

Photo: Photography by Michele.



My Brother Jack Awards — Glen Eira Mayor Cr Neil Pilling (pictured middle) with some of the sponsors and first place winners.

Photo: Kylie Grinham Photography.



School holidays at GESAC

Glen Eira Sports and Aquatic Centre (GESAC) is the perfect destination these school holidays to keep your child active in a fun and safe environment.

The waterslides will be open from 10am to 7pm during the holidays, along with a new giant inflatable obstacle course, which will be open from 12pm to 3pm.

In addition, GESAC will hold its *Fast-Lane* holiday program. The program offers swimming lessons every morning Monday to Friday to accelerate progression. This program is open to swim school members and the public.

Captain Swimalot is scheduled to make regular appearances with lots of fun and activities planned for the kids.

Team Holiday, a multi award-winning school holiday program provider, will run a range of fun and interactive activities for kids from 27 June to 8 July.

All activities will utilise the state-of-the-art facilities in and around GESAC — the swimming pools, stadium

courts, surrounding parks and playground.

The program operates during the holiday period Monday to Friday from 8am to 6pm. You can enrol in as many or as few days as you like.

Basketball lovers are also well catered for with three separate holiday programs on offer at different times over the two-week holiday period. The Warriors Basketball Association, Melbourne United and Hoopsmart will run basketball programs within GESAC. Further information can be obtained by visiting each club's respective website.

The courts are also available for casual hoop shooting.

For further information regarding GESAC school holiday programs, contact 9570 9200.



Register now for Carers' Fitness Program

Glen Eira City Council, in partnership with Caulfield Recreation Centre, is running a *Carers' Fitness Program* for carers of people with a disability.

The *Program* aims to encourage carers to set aside time each week to focus on their own health and wellbeing.

The one hour class incorporates a mix of circuit training, pilates and yoga. Carers are also provided with an opportunity to connect with others who can relate to and understand the complexities of being a carer.

The next *Carers' Fitness Program* will commence on Wednesday 13 July at Caulfield Recreation Centre, 6 Maple Street, Caulfield South.

Sessions will be held from 11.15am to 12.15pm and the cost is \$5 per session or \$45 for the 10 week block.

Healthy refreshments will be provided at the end of each session.

For further information or to register, contact Caulfield Recreation Centre on 9519 7500 or email caulfield@ymca.org.au



New multi-purpose sports courts

Glen Eira City Council has re-purposed the underperforming tennis courts at Caulfield East Reserve and transformed them into multipurpose sports courts to meet changing demands.

The new courts provide a flexible space for a diverse array of recreational activities, including small-sided soccer, handball, futsal and more.

The area will provide two small courts with a Plexipave surface and one larger court with a synthetic surface, all of which will have lighting.

All users will need to book the courts through Council's Recreation Department.

Rates:

- Single small court — off-peak (7am–6pm), \$30 per hour
- Single small court — Peak (6pm–9pm*), \$45 per hour

- Single large court — off-peak (7am–6pm), \$45 per hour
- Single large court — Peak (6pm–9pm*), \$60 per hour

*Courts close 10pm

For further information, contact 9524 3333 or email recservices@gleneira.vic.gov.au



New multipurpose facilities

The new multipurpose unstructured recreation facilities at Packer Park, Carnegie and King George Reserve, Bentleigh East are now complete. The new facilities provide users with an innovative and relaxed space, which accommodates a diverse array of all-abilities recreational activities. Features of the new space include a tennis hit-up wall; a synthetic basketball three-point zone; and two netball goal posts. Landscaping works and social seating areas have also been installed.

The final element to complete the project will be the addition of a new Plexipave surface. These works will be undertaken in the warmer months.

The new facilities are open to the public and available for use during daylight hours.

For further information, contact Council's Recreation Department on 9524 3333.

**THINK
LOCAL**

&

WIN

A

**DIAMOND
PENDANT**

**VALUED AT
\$1,000**

Diamond pendant set in white and rose gold on a white gold chain

Think local first while Ormond, McKinnon and Bentleigh are changing in front of you.

Give your support to Ormond, McKinnon and Bentleigh shopping centres and enter our 'Pick the Locals' competition.

Behind every local business is a human story, the story of those who serve and invest in our local community.

Now is the time to give local a thought.

Glen Eira City Council encourages community members to continue to think local first and show their support to the many independent local business in these centres.

The *Think local first* initiative aims to raise the awareness of why supporting local businesses, shops and services is essential to the economic

health of our community. It aims to excite the exploration, discovery and value of what is available right here in our own backyard.

There is a lot to value about shopping locally — be there and support our businesses through the change.

FURTHER DETAILS OVER THE PAGE →

Shopping centres are open as usual

A winter construction blitz to remove level crossings at Ormond, McKinnon and Bentleigh, will continue until the end of July.

ORMOND • MCKINNON • BENTLEIGH

The businesses in these strip shopping centres need your ongoing support to ensure they fare well over the winter blitz.

Ormond, McKinnon and Bentleigh shopping centres will be open for business as usual.

Parking will be available during construction. While there will be some limited road closures,

there will be no major road closures during this period.

The Level Crossing Removal Authority (LXRA) is overseeing the removal project.

For further details on the level crossing removal project, visit: www.levelcrossings.vic.gov.au

THINK LOCAL & WIN A DIAMOND PENDANT

VALUED AT
\$1,000

Diamond pendant set in white and rose gold on a white gold chain



Ormond
.....
McKinnon
.....
Bentleigh



Find the value,
value the
difference



Become a part
of the local
community
shopping centre



Love where
you live



CONDITIONS OF ENTRY: by entering this competition you are agreeing to the following conditions of entry, which include joining the Ormond, Bentleigh and McKinnon supporters database which will deliver important information or updates, special events, competitions and marketing offers available from the three centres.

1. Entry is open only to residents of Victoria aged 18 years or over. Councillors; employees of Council; and owners and employees of businesses in Ormond, McKinnon and Bentleigh (and their immediate family members) are not eligible to enter.

2. Only one valid entry will be accepted per person.
3. To enter the competition:
 - (a) the entrant must submit a valid entry by completing all requested areas on the entry form located at www.thinklocalfirst.net.au; and
 - (b) the entry must be submitted no later than 4pm on 21 July 2016. The entry form will be removed from the website after this date.
4. Each entrant who submits a valid entry will go into the draw to win the prize ("Prize").

5. The first entry drawn with three (3) successfully matched businesses will be the winner.
6. The winner will be drawn on 21 July 2016 at 4pm at Glen Eira Town Hall and notified by email by close of business on the same day. The winner must contact Glen Eira City Council Manager Business Development to claim the Prize.
7. The winner will be announced on 25 July 2016 at the following websites (which may also include a photograph of the winner):

www.gleneira.vic.gov.au, www.thinklocalfirst.net.au,
www.shopbentleigh.com.au, www.ormondshops.com.au,
www.mckinnonvillage.com.au

8. If there is a dispute as to the identity of the winner, Council reserves the right to determine the winner in its absolute discretion.
9. If the Prize is not accepted or claimed within 28 days of the notification being emailed to the winner, the Prize will be deemed unclaimed. It will then be at Glen Eira City Council's discretion whether to disregard the winner and hold a further draw to award the unclaimed Prize.

'Pick the Locals' competition

Show your support for Ormond, McKinnon and Bentleigh while they are changing in front of you — enter our '*Pick the Locals*' competition.



HOW TO ENTER

Correctly name three (3) local businesses for your chance to win!

On these pages are the faces of local business owners and operators in their business environment. Look closely and you will find some handy clues to help you guess the business name.

Enter at www.thinklocalfirst.net.au

Competition closes 21 July 2016.



Explore the creativity



Discover what's on your doorstep



Find out what's new

Protect your future



Walk to the local shops



10. The winner will be chosen from successful entrants via an automated random numbering system.

11. The judges' decision is final and no correspondence will be entered into. The successful winner will be notified via the email address they use to enter the competition.

12. The Prize is not transferable, exchangeable or redeemable for cash.

13. Council is not liable for late, lost, incomplete, invalid or incorrectly submitted entries, or illegible, corrupted or misdirected entries, claims or correspondence due to error, omission, alteration, tampering, deletion, theft, destruction, transmission interruption and communications failure or otherwise.

14. Council is not liable for any loss (including but not limited to any damage, claim, injury, cost or expense) which is suffered or incurred by any person in connection with or arising from redemption or use of the Prize.

15. If for any reason any aspect of the competition is not capable of running as planned, including by reason of tampering, unauthorised intervention, fraud, technical failure or any cause beyond the control of Council, Council may, in its absolute discretion, cancel, terminate, modify or suspend the competition, or invalidate any affected entries.

16. Privacy. The personal information requested in this form is required primarily to enable you to participate in the competition and to receive advice of further competitions, offers and information from Ormond, McKinnon and Bentleigh shopping centres.

If you do not provide the information, you will not be eligible to enter this competition. If you would like to know more about privacy at Glen Eira City Council, including your right to seek access to your personal information, please contact Council's privacy officer on 9524 3333. Council's Privacy Policy can be downloaded at: www.gleneira.vic.gov.au/Council/Legislation-and-governance/Privacy

Ormond, McKinnon and Bentleigh Shopping Centres are changing in front of you.

They're open for business.
Be there and support them through the change.

The **Think local first** initiative aims to excite the explorations, discovery and value of what is available right here in our own backyard. It raises awareness of why supporting local businesses, shops, and services is essential to the economic health of our community and further employment.

The **Think local first** philosophy has a heightened level of importance due to the State Government's level crossing removal project. Behind every local business, is a human story, the story of those who serve and invest in our local community. Think about it...

- Explore
- Discover what's on your doorstep
- Love where you live
- Walk to your local shops
- Enter the door you pass
- Find out what's new
- Be a tourist in your own town
- Become a part of the local community shopping centre
- Find the value, value the difference
- Protect your future
- Give a smile away free





Sharing the roads

Major international cycling events are about to take place, including the *Tour De France*, which commences on Saturday 2 July. This usually sees an increase in cycling throughout the City of Glen Eira with enthusiasts and newcomers motivated to get out on their bikes.

Glen Eira City Council would like to remind drivers that they are required to share the road with cyclists and should look out for them on our roads.

Manager Recreation and Youth Services Linda Smith said there are more cars, buses, trucks and cyclists on our roads than ever before.

“Melbourne’s roads are very congested and as a result, there is an increase in stress and risk to all road users,” Ms Smith said.

“Road users must share the roads and

look out for each other, especially cyclists as they can be hard to spot.”

Cyclists are the most vulnerable road user and getting knocked off a bike can be a traumatic experience, regardless of the speed. Often drivers do not see or anticipate cyclists’ movement or misjudge speeds.

Tips for considerate driving:

1. Be patient and give bike riders a clearance of at least one metre when passing them. If you are travelling more than 60 kilometres per hour, motorists are encouraged to give an even bigger clearance. If this isn’t possible, don’t overtake until it is safe to do so. After overtaking, make sure you are well clear of the bicycle before moving back.
2. Use your mirrors, especially your

nearside mirror when making a left turn.

3. Be aware that cyclists can travel as quickly as a car in urban areas, so leave plenty of space before making a manoeuvre that will cut across the path of cyclists.
4. Do not drive or park in a cycle lane marked by a broken white line unless it is unavoidable.
5. Use your indicators.
6. When turning, give way to any vehicles using a bus lane or cycle lane from either direction.
7. Do not encroach into advance stops line areas provided for cyclists.
8. Cyclists can make sudden manoeuvres to avoid uneven road surfaces and obstacles. Give them plenty of room.

9. When approaching a roundabout, be aware of a cyclist who may stay in the left-hand lane and signal right if they intend to continue round the roundabout.
10. Always look out for cyclists when emerging from junctions.
11. To avoid any chance of dooring a cyclist, remember to always check your mirrors before exiting your vehicle.
12. People should avoid exiting cars from the left side of vehicles at intersections to reduce the risk of dooring a cyclist.

Local park proposal — Fosbery Avenue, Caulfield North

A new local park is being proposed in Caulfield North.

The park will enhance the local streetscape with street tree planting along St. Aubins and Fosbery Avenues framing a central open ‘green’. Large canopy trees, a central elliptical lawn area and new planting beds will assist to mitigate the urban heat island effect and reinforce the local leafy character of the area. The crescent formation of trees and new footpaths throughout the park will soften the space.

Shifting the emphasis towards green spaces and walk-friendly neighbourhoods will contribute towards improving the health and wellbeing of our community and the ecological health of our urban environments.

Key elements of the design include:

- New feature trees throughout the park and streetscape.
- An elliptical lawn area to provide heat mitigation.
- Seating overlooking the green space.
- Considered tree and plant selection

to provide good visibility and passive surveillance.

Traffic along St. Aubins Avenue will be maintained and a decrease in vehicle traffic through Fosbery Avenue will improve local amenity. Access to residential properties will not be impacted.

Similar projects have been completed in Elsternwick and Caulfield North. Feedback on these new parks has been overwhelmingly positive.

This consultation process is aimed at fostering discussion on the concept of creating a park in this location. Implementation would still require a formal road discontinuance process, as per statutory procedure in the *Local Government Act*.

The project is an action from Glen Eira City Council’s *Open Space Strategy*, which outlines a plan to create a more liveable, sustainable and healthy City.

Consultation closes on Friday 29 July 2016. For further information, contact Recreation Services on 9524 3333 or email recservices@gleneira.vic.gov.au



Existing space.



Proposed space.

Garden Avenue Reserve — play space improvement

As part of its *Play Space Improvements Program*, Glen Eira City Council has recently upgraded the play space at Garden Avenue Reserve in Glen Huntly. The play space includes an array of exciting new equipment for children to explore, including adventure nets; sand diggers; chain climbers; a number of swings; slides; a pommel; spinners; and a naughts and crosses panel.

The new space focuses on building the imagination of toddlers and the development of play skills and fitness for growing children. The primary colour scheme appeals to all children and families.

All upgrades to play spaces in Glen Eira are designed to inject new liveliness into the area and cater to all members of the community. All play equipment installed in the municipality, meets current Australian Standards.

For further information, contact Council’s Recreation Services Department on 9524 3333.



Community Diary

Please note: due to high the volume of submissions we receive, entries must be submitted monthly. Only submissions received each month will be published. To submit an entry or for a list of deadlines, email gleneiranews@gleneira.vic.gov.au

MEETINGS AND CLUBS

Australian Plants Society South East Melbourne Region meets on the first Tuesday of every month from 8pm at Hughesdale Community Centre, corner Poath and Kangaroo Roads, Hughesdale. Contact: 9578 3171.

Bentleigh Bayside Parkinson's Peer Support Group meets on the fourth Monday of every month from 1.30pm–3.30pm at Bentleigh-Bayside Community Health, Gardeners Road, Bentleigh East. Contact: 1800 644 189.

Bentleigh Combined Probus Club Inc. meets on the second Thursday of every month from 10.30am at Bentleigh RSL, 538 Centre Road, Bentleigh. Contact: 9579 5506.

Bentleigh Over 50s hosts square and line dancing on the third Sunday of every month. Contact: 9557 5739.

Bentleigh Scottish Country Dancing is held on Mondays from 7.30pm–9.30pm at K.G. Putt Hall, 2 Arthur Street, Bentleigh. Contact: 9973 7582.

Carnegie/Murrumbeena Senior Citizens Club meets every Tuesday and Thursday from 1pm–4pm at Carnegie Library and Community Centre. Contact: 9568 2727.

Carnegie Rostrum Club will host the *Gil Lee Archer Speaking Competition* on Monday 4 July at 7pm at Carnegie Library and Community Centre. Contact: 0404 813 806.

Caulfield Over 50s Dancing Group meets every Monday (except public holidays) from 12.30pm–3.30pm at Glen Eira Town Hall. Cost: \$5. Contact: 9822 2064.

Centre Bentleigh Garden Club meets on the first Tuesday of every month at 1.30pm at the YWCA Hall, 178 East Boundary Road, Bentleigh East. Contact: 9570 7045.

Dance with Parkinson's: enjoy the freedom of movement every Tuesday from 3.30pm–4.30pm at Bentleigh Bayside Community Health, 2A Gardeners Road, Bentleigh East. Cost: \$5. Contact: 0416 383 865.

Glen Eira Brass Band rehearses every

Wednesday from 7.30pm at the back of Caulfield Park Bowls Club. If you can play or would like to learn, then come along. Contact: 0408 354 398.

Glen Eira Cheltenham Art Group, Bentleigh East, offers weekday classes for adults. Children's classes are held on Wednesday afternoons and Saturday mornings. Term three commences on Monday 11 July. Contact: 9563 7621.

Glen Eira Historical Society Annual General Meeting will be held on Wednesday 27 July at 7.30pm at Carnegie Library and Community Centre. The history of the Ripponlea area from pre-European settlement to the present will be discussed.

Ormond Angling Club Inc. meets on the first and third Wednesday of every month from 8pm at 462 North Road, Ormond. Contact: 0407 800 719.

Ormond Senior Citizens Club welcomes new members for its many activity groups, including zumba, yoga, table tennis, chess and line dancing. Contact: 0400 300 339.

Piano Lovers Group meets regularly to play and listen to piano music from Bach to boogie. Contact: 9391 4091.

Phoenix Park All Ability Table Tennis Group meets Mondays and Thursdays during the school term from 5.30pm–7pm for coaching groups and from 7.15pm–9.30pm for social play and competition. Contact: 0412 804 036.

Phoenix Park Community Table Tennis Club operates Mondays, Tuesdays and Thursdays. Seniors: 9am–1pm. Contact: 0412 804 036.

Probus Club of Brighton East meets on the second Friday of every month at 10am at The Bentleigh Club, Yawla Street, Bentleigh. Contact: 9029 6084.

Sandbelt Ladies Probus Club meets on the first Monday of every month from 10am at Bentleigh RSL, 538 Centre Road, Bentleigh. Contact: 9570 6766.

The Positive Birth Movement is a free meet-up on the first Monday of every

month from 7pm–9pm at MAMA Caulfield, 722 Glenhuntly Road, Caulfield South. The next session will be held on 4 July and will provide insights and experiences to help you make the right choices for your birth journey. Contact:

www.facebook.com/PBMMelbourne

EVENTS

Old Haileyburians' Amateur Football Club plays Beaumaris AFC on Saturday 16 July at 2pm at Princes Park, Beech Street, Caulfield South. Contact: 0402 526 606.

Bentleigh Baby and Kids Market will be held on Saturday 16 July from 9am–12.30pm at St Johns Church Hall, corner Tucker and Centre Roads, Bentleigh East. Entry: \$2. Stallholder reservations: www.trybooking.com/JUJE Contact: 9557 2226.

The Handmade Show will be held on Saturday 16 July from 10.30am–3.30pm at St. Anthony's Parish Hall, corner Grange and Neerim Roads, Glen Huntly. Free entry. Contact: www.thehandmadeshow.blogspot.com

Team of Pianists concert *Classic and French — or as lot of hot air in e-flat!* will be held on Sunday 17 July at 6.30pm at Rippon Lea, 192 Hotham Street, Elsternwick. Ann Blackburn (oboe), Alex Morris (clarinet), Jack Schiller (bassoon), Jenna Breen (horn), and Darryl Coote (piano) will perform. Ticket prices: visit www.teamofpianists.com.au Contact: 9527 2851.

Social justice lunch will be held on Sunday 7 August at 12pm at St John's Uniting Church, 567 Glenhuntly Road, Elsternwick. Guest speaker: human rights advocate Daniel Webb. Topic: Immoral Detention of Refugees. Cost: \$25. Contact: 9530 0684.

Sew Inspired Patchworkers quilt display will be held on Saturday 13 August from 9am–5pm at the Baptist Church hall, 44 Murrumbeena Road, Murrumbeena. Entry: \$6 (includes a devonshire tea). Kids are free. Contact: helenghome@gmail.com

COMMUNITY

Australian Multicultural Community Services is seeking volunteers who speak

Italian, Greek, Polish, Russian and Croatian to visit socially isolated seniors in their own homes one hour per fortnight. Contact: 9689 9170.

Calvary Health Care Bethlehem palliative care video *Embracing Life* seeks to engage schools and the wider community to raise awareness about palliative care and death and dying. If you are interested in utilising this resource, contact 9595 3225.

Caulfield Community Toy Library, 12 Munro Avenue, Carnegie is open Wednesdays, 7.30pm–8.30pm; Thursdays 10am–11.30am; and Saturdays, 10am–12.30pm. Contact: www.cctl.org.au

Caulfield South Community House offers Dining In cooking classes on Thursday evening and Friday lunchtime. Cost: gold coin donation. Occasional care sessions are also available. Contact: 9596 8643.

DanceRetro is held on Wednesdays from 7.30pm–8.30pm at Dance Be In It Studio, 474 Neerim Road, Murrumbeena. Informal social dancing to music of the 1970s, 1980s and 1990s. Cost: \$10. Contact: 0417 545 024.

Dog/pet sitting club: new members invited to join a dog/pet sitting club. Members look after each other's animals whilst away. Contact: 0405 081 841 or 0408 102 552 (SMS only).

Glen Eira Adult Learning Centre offers a range of computer and iPad classes; digital photography; MYOB; Intro to business admin and event management; writing classes; tai chi; and yoga. Contact: 9578 8996.

Godfrey Street Community House is taking enrolments for three-year-old kindergarten and permanent child care for 2017. There is also a *Mini Groovers* music program, children's art and craft classes and a range of adult classes, including drawing and writing classes. Contact: 9557 9037.

Moongala Community House offers a range of adult classes, from social media to digital photography. There are also vacancies in its *KidsCare* childcare program, Tuesday Tots playgroup and facilitated playgroup sessions. Contact: 9570 3468.

Language Line

了解市政稅

Glen Eira市政府将在7月下旬发出市政稅账单。

市政稅占市政府年度总收入的52%，为基本服务提供资金，服务包括：

- 妇幼保健、幼稚园、青年及老年服务；
- 图书馆；
- 体育及休闲设施，如游泳池、球场、公园、花园和公共大厅；
- 社区艺术项目和节庆活动；
- 废品回收和垃圾收倒；
- 市镇规划和相关服务；
- 本地道路维护和建造；以及
- 经济发展活动。

州政府于2015年12月推出了“公平市政稅制度”，这个制度对市政府每年征收的市政稅額作了限制。因此，市政府的《2016–17年度财政预算》中对市政稅的增加額度与2.5%的封顶规定相符。在2016–17年度，每个物业的估价平均市政稅是 \$1,340，在2015–16年度的基础上 (\$1,307) 增加2.5%。

每位市政稅纳税人的市政稅实际增加是不同的，因为今年是市政稅估价年。在估价年，市政稅增加的影响因素有市政稅平均增幅(2.5%)，以及每个物业相对于市政区中平均增幅的物业估价。

市政稅根据本市各地物业价值的变化加以分摊。根据所拥有的物业种类、物业位置以及价值相对于平均值的变化，有些市政稅纳税人的市政稅額可能会有变动。如果你的物业价值增值高于本市的平均值，你的市政稅的增幅就会高于2.5%。同样，如果你的物业价值增值低于本市的平均值，你的市政稅的增幅就会低于2.5%，或许还会低于前一年的市政稅。

与墨尔本22个市政区相比，Glen Eira的市政稅为最低的第二位，对每个物业征收的市政稅低于平均額 \$266 (即 \$16.6 百万)。这就是说，与墨尔本各市政府的平均数相比，Glen Eira每年少收 \$16.6百万用于社区资产的更新或设施和服务的提供。

Γνωρίστε τα δημοτικά τέλη σας

Ο Δήμος Glen Eira θα αποστείλει τις ειδοποιήσεις για τα δημοτικά τέλη στο τέλος Ιουλίου.

Τα δημοτικά τέλη παρέχουν περίπου το 52% του ετήσιου εισοδήματος του Δήμου. Αυτά χρηματοδοτούν ζωτικές υπηρεσίες του δήμου, όπως:

- φροντίδα μητέρας και παιδιού, νηπιαγωγεία και υπηρεσίες για νέους και ηλικιωμένους δημότες,
- βιβλιοθήκες,
- αθλητικές και ψυχαγωγικές εγκαταστάσεις όπως πισίνες, γήπεδα, πάρκα, κήπους, δημόσιες αίθουσες,
- κοινοτικά καλλτεχνικά προγράμματα και φεστιβάλ,
- συλλογή ανακυκλώσιμων και σκουπιδιών,
- πολεοδομία και σχετικές υπηρεσίες,
- συντήρηση και κατασκευή τοπικών δρόμων, και
- δραστηριότητες οικονομικής ανάπτυξης.

Η Πολιτειακή Κυβέρνηση εφάρμοσε το Σύστημα Δικαιων Δημοτικών Τελών περιορίζει το ποσό των δημοτικών τελών που μπορεί να χρεώνει ο δήμος κάθε χρόνο. Λόγω αυτού, ο Προϋπολογισμός του Δήμου για το 2016-17, βασίζεται σε μια αύξηση των τελών που ευθυγραμμίζεται με το ανώτερο όριο του 2,5 τοις εκατό. Το 2016-17, ο μέσος όρος των δημοτικών τελών ανά αξιολόγηση υπολογίζεται στα \$1340. Αυτό αποτελεί μια αύξηση της τάξεως του 2,5 τοις εκατό σε σύγκριση με τα δημοτικά τέλη ανά αξιολόγηση για το 2015-16 (\$1307).

Οι πραγματικές αυξήσεις τελών που θα υποστεί κάθε μεμονωμένος φορολογούμενος θα είναι διαφορετικές λόγω του ότι εφέτος θα είναι χρονιά επαναξιολόγησης του δήμου. Στη χρονιά επαναξιολόγησης, οι αυξήσεις των τελών θα επηρεαστούν από την μέση αύξηση των τελών (2,5 τοις εκατό) και από τις αυξήσεις της αξίας ακινήτου για κάθε ακίνητο που αφορούν τον μέσο όρο σε όλο τον δήμο.

Τα δημοτικά τέλη ανακατανέμονται σύμφωνα με τη μετατόπιση της αξίας των ακινήτων που έχουν συμμεί σε διάφορα μέρη του δήμου. Μερικοί φορολογούμενοι μπορεί να δουν μια αλλαγή στα τέλη τους ανάλογα με το είδος του ακινήτου που έχουν, το μέρος που βρίσκεται και το πώς έχει αλλάξει η αξία του σε σχέση με το μέσο όρο. Αν η αξία του ακινήτου σας αυξήθηκε περισσότερο από το μέσο όρο εντός του δήμου, τα τέλη σας θα αυξηθούν πάνω από 2,5 τοις εκατό. Αν η αξία του ακινήτου σας αυξήθηκε κάτω από το μέσο όρο, τα τέλη σας θα αυξηθούν λιγότερο από 2,5 τοις εκατό και μπορεί μάλιστα να μειωθούν σε σύγκριση με το προηγούμενο έτος.

Σε σύγκριση με 22 κεντρικούς μητροπολιτικούς δήμους, ο Δήμος Glen Eira έχει τα δεύτερα χαμηλότερα δημοτικά τέλη και χρεώνει \$266 ανά αξιολόγηση (δηλ. 16,6 εκατομμύρια δολάρια) κάτω από το μέσο συνολικό αποτέλεσμα. Αυτό σημαίνει ότι, σε σύγκριση με το μέσο όρο των κεντρικών μητροπολιτικών δήμων, ο Δήμος Glen Eira έχει 16,6 εκατομμύρια δολάρια λιγότερα ετησίως για την αναβάθμιση κοινοτικών υποδομών ή την παροχή εγκαταστάσεων και υπηρεσιών.

अपनी दरों को जानें

ग्लेन एरा नगर परिषद जुलाई के अंत में अपनी दरों के नोटिस वितरित करेगी।

दरें परिषद की कुल वार्षिक आय का लगभग 52 प्रतिशत प्रदान करती हैं। इससे आवश्यक सेवाओं का विच-पोषण किया जाता है, जिनमें निम्नलिखित शामिल हैं:

- मातृ एवं शिशु देखभाल, किंडरगार्टन, और युवा तथा वयोवृद्ध नागरिकों के लिए सेवाएँ;
- पुस्तकालय;
- खेल-कूद और मनोरंजन सुविधाएँ, जैसेकि स्विमिंग पूल, ओवल, पार्क, उद्यान, सार्वजनिक हॉल;
- सामुदायिक कला परियोजनाएँ और त्योहार;
- पुनर्वक्रण और अपशिष्ट संग्रह;
- नगर नियोजन और संबंधित सेवाएँ;
- स्थानीय सड़क रख-रखाव और निर्माण; तथा
- आर्थिक विकास गतिविधि।

राज्य सरकार ने दिसंबर 2015 में एक फेयर गो रेट्स सिस्टम शुरू किया था। फेयर गो रेट्स सिस्टम के तहत हरेक साल परिषद किन्ती धनराशि की दरें लागू कर सकती है, इसे सीमित किया जाता है। इसके परिणामस्वरूप परिषद का वर्ष 2016-17 का बजट अधिकतम 2.5 प्रतिशत की सीमा वाली दर वृद्धि पर आधारित है। 2016-17 में औसत दरें प्रति आकलन का बजट \$1,340 है। यह 2015-16 में दरें प्रति आकलन (\$1307) के ऊपर 2.5 प्रतिशत की वृद्धि है।

चूँकि यह वर्ष नगर निगम का पुनर्मूल्यांकन वर्ष है, इसलिए व्यक्ति-विशेष दर-भुगतानकर्ता द्वारा अनुभव की जाने वाली वास्तविक दर वृद्धियाँ अलग-अलग होंगी। पुनर्मूल्यांकन वर्ष में दर में वृद्धियाँ औसत दर वृद्धि (2.5 प्रतिशत) द्वारा प्रभावित होती हैं और पूरी नगर पालिका में औसत संपत्ति मूल्यांकन के सापेक्ष व्यक्तिगत संपत्तियों का मूल्य बढ़ जाता है।

नगर पालिका के विभिन्न भागों में संपत्तियों के मूल्यों में जो बदलाव आता है, उसके अनुसार दरों को पुनर्वितरित किया जाता है। कुछ दर-भुगतानकर्ता अपनी दरों में इन कारणों से बदलाव का अनुभव कर सकते हैं कि वे किस प्रकार की संपत्ति के

स्वामी हैं, संपत्ति कहीं स्थित है और औसत के सापेक्ष संपत्ति का मूल्य कैसे परिवर्तित हुआ है। अगर आपकी संपत्ति के मूल्य में नगर पालिका के अंदर औसत मूल्य से अधिक की वृद्धि हुई है, तो आपकी दरों में 2.5 प्रतिशत से अधिक की वृद्धि होगी। अगर आपकी संपत्ति के मूल्य में औसत से कम की वृद्धि हुई है, तो आपकी दरों में 2.5 प्रतिशत से कम की वृद्धि होगी और ये वास्तव में पिछले वर्ष से कम भी हो सकती हैं।

22 भीतरी महानगरीय परिषदों की तुलना में ग्लेन एरा की दरें क्रम में दूसरी सबसे कम हैं और यह औसत परिणाम से \$266 प्रति आकलन कम (यानि कि \$16.6 मिलियन) चार्ज करती है। इसका मतलब यह है कि औसत भीतरी महानगरीय परिषद की तुलना में, ग्लेन एरा के पास समुदाय की परिसंपत्ति का उन्नयन करने या सुविधाओं और सेवाओं को उपलब्ध कराने के लिए प्रति वर्ष \$16.6 मिलियन कम होते हैं।

Le vostre tasse comunali

Alla fine di luglio il comune di Glen Eira invierà gli avvisi di pagamento per le tasse comunali.

Le tasse comunali forniscono approssimativamente il 52% degli introiti annuali del comune e servono a finanziare servizi essenziali tra cui:

- salute materna e infantile, scuole materne e servizi per i cittadini più giovani e per gli anziani
- biblioteche
- centri sportivi e ricreativi come piscine, parchi, giardini, campi da football e sale pubbliche
- festival e progetti artistici comunitari
- raccolta della spazzatura e del riciclaggio
- pianificazione urbana e relativi servizi
- costruzione e mantenimento delle arterie stradali locali
- attività di sviluppo economico.

A dicembre del 2015 il comune ha introdotto un sistema di tasse comunali equo (Fair Go Rates System). Questo sistema limita l'ammontare di tasse comunali che il comune può riscuotere ogni anno. Conseguentemente, il bilancio di previsione del comune 2016/2017 si basa su un aumento delle tasse comunali in linea con l'aumento consentito del 2.5%. In bilancio per il 2016/2017, l'ammontare medio di tasse comunali per immobile è di \$1,340. L'aumento è del 2,5% rispetto all'ammontare medio per il 2015/16 (\$1,307).

L'effettivo aumento delle tasse comunali per il singolo contribuente sarà diverso a causa del fatto che si tratta di un anno in cui viene fatta la rivalutazione degli immobili. Nell'anno in cui il comune esegue la rivalutazione l'aumento è costituito dal 2,5% di aumento medio e dall'aumento derivante dalla valutazione del singolo immobile in relazione alla media di tutto il territorio municipale.

Le tasse comunali vengono redistribuite in base alla variazione del valore degli immobili registrata in diverse parti del territorio municipale. Alcuni contribuenti potrebbero riscontrare una differenza nell'ammontare delle tasse comunali da pagare a seconda del tipo di immobile che possiedono, del luogo in cui si trova e di come sia cambiato il suo valore rispetto alla media degli altri immobili. Se il valore del vostro immobile è aumentato più della media dell'intero territorio municipale, le vostre tasse comunali aumenteranno di più del 2,5%. Se il valore del vostro immobile è aumentato meno della media dell'intero territorio municipale, le vostre tasse comunali aumenteranno di meno del 2,5% e potrebbero addirittura essere più basse rispetto all'anno precedente. Rispetto agli altri 22 comuni dell'area metropolitana,

il comune di Glen Eira è al secondo posto per le tasse comunali più basse e fa pagare per valutazione \$266 (\$16.6 milioni) al di sotto del risultante ammontare medio. Questo significa che a confronto con uno degli altri comuni dell'area metropolitana, il comune di Glen Eira ha a disposizione \$16.6 milioni in meno all'anno per la riqualificazione dei beni comuni o per fornire strutture e servizi.

Информация о муниципальном налоге на недвижимость

В конце июля муниципалитет Glen Eira будет рассылать домовладельцам ежегодные извещения о муниципальном налоге на недвижимость (rates notices).

Налог на недвижимость составляет примерно 52% бюджета муниципалитета. Эти средства идут на финансирование таких важных услуг, как:

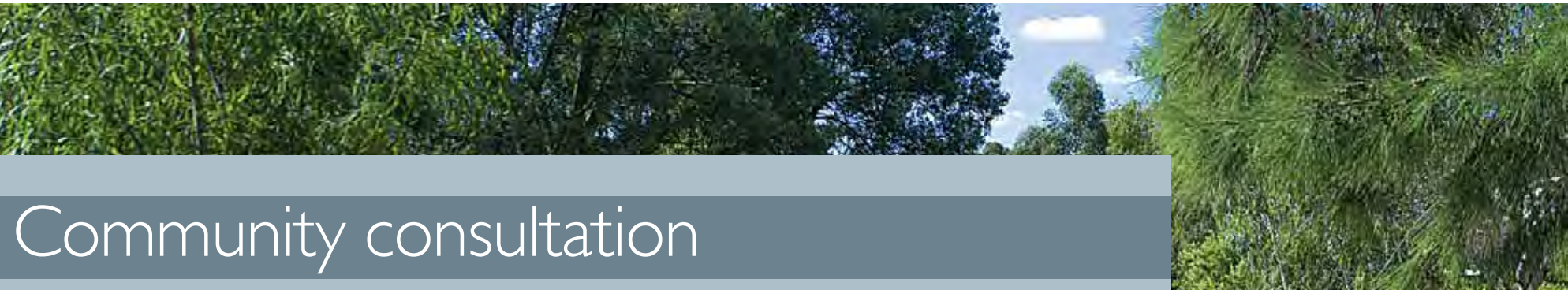
- охрана здоровья матери и ребенка, детские сады, молодежные программы и уход за пожилыми;
- библиотеки;
- спортивные и развлекательные сооружения (бассейны, стадионы, парки, сады, общественные здания);
- фестивали и культурные проекты;
- переработка отходов и сбор мусора;
- городское планирования и связанные с этим услуги;
- ремонт и эксплуатация дорог, строительство;
- развитие местной экономики.

В декабре 2015 года Правительство штата Виктория ввело в действие систему регулирования муниципального налога на недвижимость (Fair Go Rates System). Эта система каждый год устанавливает предел повышения налога. Соответственно, бюджет муниципалитета на 2016-2017 финансовый год основан на повышении муниципального налога не более чем на 2.5%. В 2016-2017 средний налог на недвижимость в Glen Eira составит \$1340 в год, что на 2.5% выше, чем в 2015-2016 (\$1307).

Однако увеличение муниципального налога для каждого конкретного домовладельца может отличаться от 2.5%. Это связано с тем, что в этом году муниципалитет проводит переоценку рыночной стоимости недвижимости, поэтому повышение налога в каждом конкретном случае будет также зависеть от рыночной стоимости конкретной недвижимой собственности.

Рыночная стоимость недвижимости меняется по разному в разных частях муниципалитета. Если рыночная стоимость вашего дома или квартиры выросла больше, чем в среднем по муниципалитету, ваш налог может увеличиться более чем на 2.5% по сравнению с предыдущим годом. Если она выросла меньше, чем в среднем по муниципалитету, ваш налог вырастет меньше, чем на 2.5% или даже может уменьшиться.

Среди других 22 городских муниципалитетов Мельбурна, Glen Eira занимает предпоследнее место по уровню налогов на недвижимость. Это означает, что в Glen Eira домовладельцы платят в среднем на \$266 в год меньше, и таким образом, по сравнению с другими районами Мельбурна, в бюджет муниципалитета поступает в среднем на \$16.6 миллионов долларов в год меньше на различные программы и услуги.



Community consultation

Consultation involves the community in Glen Eira City Council’s planning and activities and helps Council to understand the community’s priorities and issues. For further information, contact Council’s Service Centre on 9524 3333 or visit www.gleneira.vic.gov.au

Subject	Type	Date	Where
<i>New local park proposal — Fosbery Avenue, Caulfield North</i>	<i>Comments and submissions</i>	Closes Friday 29 July 2016	Recreation Services, Glen Eira City Council, PO Box 42 Caulfield South VIC 3162 or email: recservices@gleneira.vic.gov.au
<i>Glen Eira Community Plan</i>	<i>Community meetings</i>	July 2016	Various locations (see page three for details)

Home Maintenance Service available for eligible residents

Glen Eira City Council's Home Maintenance team assists frail older residents and residents with a disability with basic repairs and maintenance in and around the home to ensure a safe and secure home environment.

The Service aims to support eligible residents to live at home independently for as long as possible. A fee is charged for this Service and varies according to income.

Glen Eira Mayor Cr Neil Pilling said the main focus of the Service is on safety and security.

"One of the priorities of the Service, especially at this time of year, is installing smoke detectors or changing their batteries," Cr Pilling said.

"Without working smoke alarms, you are 26 per cent more likely to suffer serious injury and four times more likely to die in a house fire.

"Only working smoke alarms save lives and I encourage residents who

are eligible for the Home Maintenance Service to contact Council if they require any assistance with their smoke alarms."

Cr Pilling said a range of minor repairs and maintenance can also be provided, both inside and outside of the home.

"These tasks may include changing light globes, rewiring door and window flyscreens, installing security locks, installing handrails and mobility aids, repairing door or window locks, or minor carpentry repairs to doors, windows, gates or fences," Cr Pilling said.

Some tasks are unable to be undertaken by the Service, particularly those which require the services of a qualified tradesman such as plumbing or electrical work. Jobs which require a specialist contractor can also not be undertaken, including lawn and garden maintenance.

For further information, contact Council's Service Centre on 9524 3333.



Nutritious meals served with a smile

Glen Eira City Council offers a tasty Delivered Meals Service for older people or people with a disability who reside in Glen Eira and have difficulty preparing their own meals.

Meals are healthy and nutritious and cater for all dietary requirements.

Glen Eira Mayor Cr Neil Pilling said the menu is appetising and offers a range of choice.

"Clients can select from six mains and four desserts including a mix of old favourites such as roast lamb, salmon patties, steak and mushroom casserole and meatloaf," Cr Pilling said.

"There are also modern choices such as sweet potato and sage risotto, lamb Rogan Josh, baked fish in tarragon sauce, gnocchi in mushroom sauce and red Thai chicken curry."

Fruit juice is included, as well as soup in the winter months.

Chilled meals are delivered each day between 8.30am and 11am by a dedicated group of staff and volunteers. Meals can be delivered heated if a client is unable to heat the meal due to physical or cognitive impairment. Heated meals are delivered between 11am and 12pm.

For further information or to access this Service, contact Council's Service Centre on 9524 3333. Staff will ask a few questions to determine your eligibility for the Service and any dietary or delivery requirements. The Service can commence within one to two working days.



The Carnegie Occasional Care Centre

Taking bookings now!

Short-term and affordable care options for children aged from six months to five years.

Qualified early childhood educators provide a range of age appropriate learning and play experiences.

Available Wednesday and Thursday 9.30am to 12.30pm during school terms. Permanent and casual places available.

Located in the Carnegie Children's Multi-purpose Centre next to Carnegie Library in a safe, secure and caring environment.



To make a casual booking, contact 9524 3333. For term bookings and enquiries, contact 9572 5128.

Immunisation sessions

Bentleigh-Bayside Community Health

Gardeners Road, Bentleigh East

Wednesday 13 July and Wednesday 10 August 5.30pm-7.30pm

Thursday 28 July and Thursday 25 August 5.30pm-7.30pm

Saturday 16 July and Saturday 20 August 9am-11am

McKinnon Public Hall

118 McKinnon Road, McKinnon

Monday 4 July and Monday 1 August 9.30am-11.30am

Carnegie Library and Community Centre

7 Shepperson Avenue, Carnegie

Wednesday 20 July and Wednesday 17 August 1pm-2.30pm and 5.30pm-7.30pm

DC Bricker — Princes Park

Beech Street, Caulfield South

Monday 25 July and Monday 29 August 9.30am-11.30am

Glen Eira Town Hall Auditorium (entry via Glen Eira Road)

Corner Glen Eira and Hawthorn Roads, Caulfield

Tuesday 12 July and Tuesday 9 August 9.30am-11.30am

Tuesday 5 July and Tuesday 2 August 6pm-7pm

Glen Huntly Maternal and Child Health Centre

Corner Royal and Rosedale Avenues, Glen Huntly

Wednesday 27 July and Wednesday 24 August 9.30am-11.30am



Sounds of Glen Eira — we want you



Do you love to perform?

Are you part of a band, duo or soloist?

The 2016 Sounds of Glen Eira call-out is currently happening so don't miss out.

Sounds of Glen Eira is a fantastic opportunity for young people to showcase their talent on stage, performing live for other young people and community members.

Entrants have until 4.30pm on Friday 12 August to submit their demo CD to the Youth Information Centre located at 86 Robert Street, Bentleigh. Acts can include bands, vocalists, instrumentalists and acoustic performers with a significant link to Glen Eira (live, work, study or socialise).

The selected acts will compete to win some amazing prizes, including two days of professional recording at Glen Eira Youth Services' recording studio with a sound engineer to record, mix and

master their work. Additionally, one of the finalists will be selected to perform at Council's 2017 Party in the Park — Under the Stars event.

Save the date

The 2016 Sounds of Glen Eira will be held on Friday 9 September at Bentleigh McKinnon Youth Centre from 5.45pm to 10.30pm.

This event is a fully supervised drug, alcohol and smoke free event. Entry is free, no pass outs for young people aged 17 and under.

For further information, contact Youth Services on 9524 3676.



Join Youth Services mailing list

Stay up-to-date with the latest programs and events Glen Eira City Council Youth Services offer by joining the parent mailing list.

As a member of our 'Keeping up-to-date' mailing list, you will be the first to find out about our new youth initiatives, programs and parent information nights. You will also be the first to find out about our latest *Teen School Holiday Program*, including how to book in your teen before it sells out.

To join, visit www.gleneira.vic.gov.au/

youth and click on 'Keeping up-to-date' and enter your details.



Plugged In studio bookings

Glen Eira City Council's *Plugged In* music program runs during school terms on Wednesday afternoons from 4pm to 5.30pm. The program is held in a purpose-built recording studio at the Youth Information Centre in Bentleigh.

Plugged In is free for young people aged 12 to 25 who live, work, socialise or study in Glen Eira.

You will gain valuable hands-on experience learn how to set-up and run recording sessions.

For further information about the *Plugged In* program, contact Youth Services on 9524 3676.



B.A.M — Body and Mind

Glen Eira City Council's Youth Services *Body and Mind* (B.A.M) is a highly customised and holistic program, which teaches girls the importance of personal safety. Each session focuses on being aware of your surroundings by incorporating discussions and practical elements of learning basic defence techniques.

B.A.M member Chloe (pictured right) told *Glen Eira News* that she joined the eight week program to learn how to defend herself after hearing about violence against women in the media and on the news.

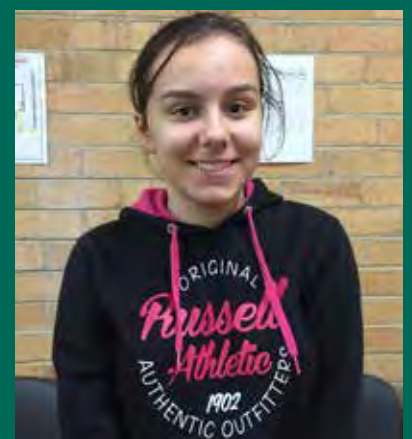
"Hearing so many violent stories in the news made me think I should learn self-defence to get my confidence up when out and about," Chloe said.

"Since joining B.A.M, I have learnt how to use my body in the right way to defend myself, as well as some good techniques

to diffuse a situation."

"I have really enjoyed interacting with the other girls and learning so many techniques."

If you are a girl aged 14 to 25 and would like to build your confidence and learn basic self-defence, register at www.gleneira.vic.gov.au/youth or contact 9524 3676.



2016 Young Innovators Showcase

The 2016 *Young Innovators Showcase* (YIS) was filled with talented and fascinating entries from students across the City of Glen Eira. This year's challenge focused on students finding an innovative way to save water in their home or school settings.

With entries ranging from elaborate machines to creative apps and games, the collective effort put into researching and building their showcases made it tough to pick just one winner.

Glen Eira City Council Youth Services would like to congratulate the following winners:

Winning school — Our Lady of Sacred Heart College, Bentleigh (10–13 years)



The Water Saving Team: Samara Parsons, Danielle Russell, Nicolette Ballas, Danielle Simpfordorfer and Isabella Roussos.

The Water Saving Team developed an innovative tool to implement at Our Lady of Sacred Heart College, which aims to save water wastage from drinking taps. With the idea of capturing the excess water produced by school drinking taps, the team created a working model to show how the water could be redirected to garden beds using timers to further reduce the amount of water used by the school.

Aristidis Tsoulakos (14–18 years)

Aristidis (Ari) developed an innovative and sustainable way to reduce water by utilising a recently built canopy at his school.

Ari used some sophisticated modelling to calculate the potential amount of rain water that could be captured by the canopy, as well as surveying students on how often they were using the nearby toilet block.

Ari's design is for the water falling on the canopy to be fed into two 5,000 litre tanks at the end of the adjoining buildings. This would then be gravity-fed to the nearby toilet block to be reused, potentially saving his school up to 1,200 litres of water a day or 240,000 litres a year.

Exhibitions

Glen Eira Town Hall, corner Glen Eira and Hawthorn Roads, Caulfield.
Phone: 9524 3333. Opening times: Monday–Friday, 10am–5pm, Saturday and Sunday,
1pm–5pm. Free admission.

Celebrating style — 1950s Fashion in Melbourne Until 10 July

Presented in association with the 2016 Glen Eira Storytelling Festival

Showcasing 1950s Australian women's vintage fashion and couture, this exhibition captures the international influences, style and elegance of fashion during this decade. Garments, accessories and fashion photography by Athol Shmith and Bruno Benini sourced from public and private collections are included in the exhibition.



Athol Shmith
No title (Fashion illustration. Patricia Shmith) 1950s
gelatin silver photograph, 24.3 x 19.1 cm (image)
National Gallery of Victoria, Melbourne
Presented through The Art Foundation of Victoria
by the Shmith Family, Fellow, 1993 (PH109-1993)
© The Estate of Athol Shmith, Licensed by Kalli Rolfe
Contemporary Art

Twenty Melbourne Painters Society 13–31 July

Jenny Pihan Fine Art presents the 98th annual exhibition of the Twenty Melbourne Painters Society showcasing recent paintings from this prestigious group of traditional realist painters. Established in 1918, the enduring strength of this group to the present day is due to the foresight and conviction of its founding and past members — the tradition continues.



Herman Pekel
Young and Jacksons 2015
Oil on canvas
75 x 55 cm

My Brother Jack Awards 2016

Glen Eira City Council's *My Brother Jack Awards 2016* were announced at a ceremony at Town Hall on Sunday 19 June. Council would like to thank the judges, sponsors and supporters of the Awards. Congratulations to the following winners.

Bentleigh and Caulfield RSL Open Short Story Award

First prize: *Canary Fields* by Adam vanLangenberg
Second prize: *Vat 69* by Stephan Ward
Third prize: *Circumnavigate* by Melissa Manning
Commended: *untitled (for jiminy cricket)* by Alan Blakeney
Commended: *The Year Buddy Holly Died* by Marie Watt

Nelson Bros Funeral Services Open Poetry Award

First prize: *The Ancient Eucalypts* by Alexandra Phelan
Second prize: *Letter to Rosa Luxemburg* by Adele Ogier-Jones

Third prize: *My Father's old dog* by Tony Lintermans
Commended: *earth embroidered* by Laura Hallsworth
Commended: *The Spaces* by Eli Spivakovsky
Commended: *Me* by Lauren Rosenberg

Benn's Books Senior Secondary School Short Story Award

First prize: *Through the window* by Reena Zelenkova

Benn's Books Senior Secondary School Poetry Award

First prize: *Then* by Immy Hart
Second prize: *The Man Who Plays All* by Anna Rhind

Hardie Grant Egmont Junior Secondary School Short Story Award

First prize: *Seven Hundred and Seventy Seven* by Harini Guddanti
Second prize: *Misshapen Love* by Alistair McCutcheon
Third prize: *Way of Life* by Caleb Gering

Commended: *The Message* by Claudia Rubtsov

Grill'd Healthy Burgers Carnegie Junior Secondary School Poetry Award

First prize: *Beans* by Olympia Tassone
Second Prize: *Bath* by Catherine Maticka
Commended: *Hoping* by Lucy Yeats
Commended: *Tennis* by Anthony Verbni

Hardie Grant Egmont Primary School Short Story Award

First prize: *What if* by Timna Shushan
Second prize: *Imagination* by Lola Wall
Third prize: *Lucy and the Snowflake* by Saylor Delves
Commended: *Too Many Pets* by Henry Noble
Commended: *The Nightmares of New York* by Annalena Aarons
Commended: *The Plague of the Horseflies* by Alleira Reed

Grill'd Healthy Burgers Elsternwick Primary School Poetry Award

First prize: *The Tree* by Abbey Wilcox

Second prize: *How many poppies?* by Dehara Palihakkara

Third prize: *Winter* by Chaya Goodman
Commended: *Gossip* by Nikki Higgins
Commended: *Ocean* by Lauren Gilfedder
Commended: *Freedom* by Mahalakshme Thiagarajan

The Local Framing Studio Open Photographic Award

First prize: *An armful of chooks!* by Chris Torode

Glen Eira Youth Services Youth Photographic Award

First prize: *Sibling Rivalry* by Rachel Wooding

Glen Eira City Council Junior Photographic Award

First prize: *Things I love, Murrumbena* by Finn Malcolm
Second prize: *The Garbage Man and Me* by Henry Noble

Melbourne Writers Festival comes to Glen Eira

Melbourne 2016 Writers Festival

The Melbourne Writers Festival (MWF) is Victoria's premier annual literary event. The Festival connects writers and stories to celebrate a world of literature, explore universal ideas, and inspire a global community of readers. For the first time, the MWF will host events in Glen Eira in conjunction with Glen Eira Libraries and Learning Centres.

Becoming a writer

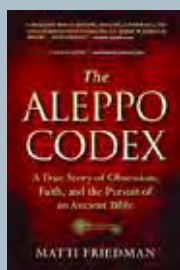
Sunday 28 August, 3.30pm–4.30pm
Glen Eira Town Hall — Theatre

Writer and social commentator Emily Maguire will lead young, budding emerging writers through a seminar style workshop covering some of the tips, tricks and challenges along the path to becoming a writer. Drawing on her vast experiences in the literary industry, Emily will talk about her writing processes and practices

in crafting, developing and publishing her collection of novels, including her latest offering *An Isolated Incident*.

Free event. No bookings required.

Matti Friedman: The Aleppo Codex
Sunday 4 September, 2pm–3pm
Glen Eira Town Hall — Auditorium



Israeli Canadian journalist and author Matti Friedman's reporting has taken him from Israel to Lebanon, Morocco, Moscow, and the Caucasus, and his

writing has appeared in major publications around the world. His more recent offering is *The Aleppo Codex*, a real-life *Da Vinci Code*, based on one of Judaism's sacred texts. The book has won the 2014 Sami Rohr Prize, the American Library Association's *Sophie Brody Medal* and the *Canadian Jewish Book Award*. For centuries, the mystery of the *Aleppo Codex* has puzzled the world. Where are the missing pages? Matti Friedman's non-fiction work about this enigma is a real-life thriller. Join him on a journey of discovery in this special in-conversation event.

Free event. No bookings required.

E-books quick and easy to download

Whether you are new to e-books or an avid user, Glen Eira Libraries and Learning Centres have something for all reading tastes and interests.

There are more than 6,000 e-books and e-audio books, including popular fiction; biography; self-help; cooking; travel; true crime; and more, ready for you to download free from the library website: library.gleneira.vic.gov.au

These can be downloaded to your smartphone, tablet, laptop or e-reader from home.

If you would like to enjoy digital books instantly, no matter where you are, try the all-in-one Axis 360 mobile app, which is now available free from the Google Play and Apple App Store. With more than a million e-books and digital audiobooks to choose from, your library makes titles instantly deliverable to their device for on-the-go access.

How Axis 360 works:

- Install the app on your device.
- Login and search Glen Eira Libraries and Learning Centres and enter your membership number and PIN.
- Browse our extensive collection.
- Tap check-out when you make your selection. Once downloaded, you are ready to start reading immediately.
- Checked-out items will automatically return at the end of the three week loan period, so there are no overdue charges.



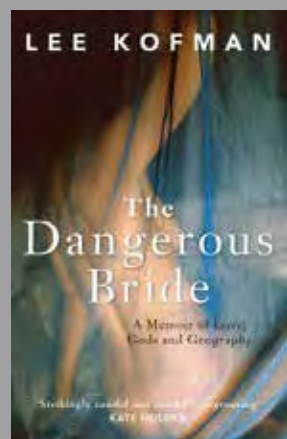
Author talks

Lee Kofman — memoir, writing and *The Dangerous Bride*

Tuesday 19 July, 7pm–8pm
Glen Eira Town Hall — Theatre

Join award-winning Australian writer and popular writing teacher Lee Kofman as she speaks about her fourth book *The Dangerous Bride* and her writing process. The rebellious daughter of ultra-orthodox Jews, Lee's memoir explores unconventional relationships, love, migration and religion in her first book in English. She will discuss her book, the ethics of writing a memoir and the challenges in changing the language in which you write.

This is a free event. Book online at library.gleneira.vic.gov.au, at any Glen Eira library or contact 9524 3700.



Leisure and lifestyle

Introduction to mindfulness meditation

Sunday 24 July, 2.30pm–4pm
Carnegie Library and Community Centre — Boyd Room

Join Meditation Solutions for this introductory workshop. Meditation relaxes the body quickly and calms the mind. When you meditate, you detach from your habitual thoughts and worries by focusing on the sensations of the present. Meditation is ideal for anxiety and stress related illnesses. This session will teach meditation for relaxation, stress reduction, better health and clarity of mind in a way that is accessible to people who are new to meditation.

This is a free event. Book online at library.gleneira.vic.gov.au, at any Glen Eira library or contact 9524 3700.



Connect, create and make

Mind Games

Bentleigh Library, Fridays
Caulfield Library, Wednesdays
Carnegie Library and Community Centre, Fridays
Elsternwick Library, Fridays

All sessions run from 2pm–5pm
If you love chess, scrabble, word games, brain twisters and meeting people, then join our Mind Games groups for adults.

No bookings required — just come along and join in.



Like a yarn?

Thursdays, 11am–12.30pm
Carnegie Library and Community Centre

If you enjoy knitting, crochet or needlework and like meeting new people with similar interests, then gather your yarn and threads and come along. No bookings required.

