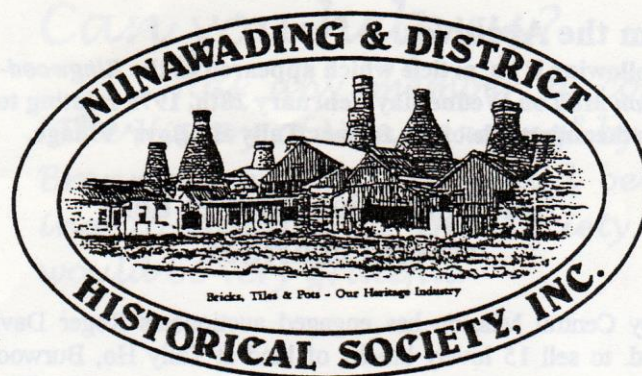


NUNAWADING & DISTRICT HISTORICAL SOCIETY INC. NEWSLETTER

President - Barbara Keene 9874 4919
Secretary - Barbara Gardiner 9874 6592
Treasurer - Barbara Rogalski 9874 4668



Series 7. No. 6

A0012235J

December 1998

All mail to be addressed to P.O. Box 272 Mitcham 3132 - Museum Telephone 9873 4946

From the President

It had to happen, I suppose, but the rain that spoilt "our parade" at the Wisteria Festival was as though the heavens had opened up. Still, the large crowd responded well, due in no small part, to the members of the Brumbies Bush Band who adjourned to the Museum and continued playing in a heroic manner. Thank you to all who helped on the day. Perhaps the crowds who attend both this Festival and the Heritage Festival Open Day means that we are doing something right - it is encouraging!

Two "travelling" displays have occurred since I last wrote to you - the City of Whitehorse's Spring Festival and Nunawading Primary School's 75th Anniversary. These involved a lot of work and I am grateful for the assistance of all those who helped.

The Commonwealth Government are offering Federation Grants to all electorates to mark the centenary of Federation and the Society is involved in two applications. The first is our own submission for funds to enable Rate Books to be placed on microfiche and I thank Valda for her work in the preparation for this submission.

The second is a City of Whitehorse initiative for funding a Heritage Trail throughout the City and the Society have supported them in this application. Now, we must wait until February to see if we have been successful.

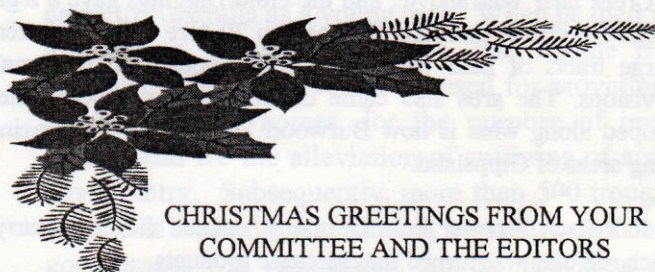
The City of Whitehorse has commissioned a Heritage Study, and members of your Committee are involved in assisting with the research and ensuring, to the best of our ability, that important

Heritage sites within the City of Whitehorse, are adequately protected.

The Festive Season is upon us - whatever happened to 1998? I would like to take this opportunity to wish all Members and their loved ones, a Joyous Christmas spent relaxing with those you like most, eating yummy food and best of all, getting exactly the presents you want.

May 1999 be your best year yet!!!

Barbara Keene



CHRISTMAS GREETINGS FROM YOUR
COMMITTEE AND THE EDITORS

STOP PRESS

SATURDAY, DECEMBER, 12TH, 1998
LUNCHEON - BEGINNING AT 12 NOON
(Please bring plate of lunch to share)
MEETING AT 1.30 P.M.

Our speaker will be Rosalie Whalen, a member of our Society and great-grand-daughter of August Schwerkolt. Rosalie has been researching the family history for some years and will be able to share this information with us all.

This should be a fascinating meeting so we hope you will all be there!

SATURDAY, FEBRUARY 13TH, 1999

Cr. Helen Buckingham, the Mayor of the City of Whitehorse, will be our speaker on this occasion and will share with us her impressions of her year as Mayor of our City and her comments on future directions.

From the Archives

The following is an article which appeared in the *Ringwood-Croydon Mail* on Wednesday February 28th, 1979 relating to the forthcoming sale of the former Tally Ho Boys' Village.

Sale of mission land to help several charities.

Wesley Central Mission has engaged auctioneers Roger Davis Pty.Ltd. to sell 15 lovely blocks of land at Tally Ho, Burwood East. The proceeds of the sale will go toward a multi-million dollar expansion of community services activities in the metropolitan area, and the projects include a spastic centre, sheltered workshop, hospital and medical centre for neurology.

The Tally Ho area is rich in history, and when Robert Hoddle, born in 1794 in England, was sent from Sydney to Melbourne in 1837 to make a suitable survey map of the new colony he could not have envisaged the huge greater Melbourne of today. Robert Hoddle was an orderly surveyor who mapped out and divided the whole Port Phillip District into blocks and parishes. Significantly his orderly work did allow for expansion. All the parishes were given native names, and on a map issued by Hoddle in 1839, the name Nunawading, meaning "coming together" was lightly pencilled alongside a margin of land for settlement.

The Tally Ho land is in the south-western corner of the City of Nunawading and on the northern boundary of the City of Waverley. Some early interest in the region came from the discovery of some gold at Black Flat, now called Glen Waverley, and Anderson's Creek near Warrandyte, and the Gold Diggings gave a legal umbrella for occupation land licences on 20-acre units. Squatters on large tracts of land were vigorously opposed to the small subdivisions. The area also came under notice as stock routes developed along what is now Burwood Highway to the grazing farming areas of Gippsland.

In 1850 Fritsch, a potter from Germany, opened the first quarry, and rich red clay was turned into saleable products.

Many of the early settlers of the decade to follow were from England and Scotland, They were responsible people with strong religious loyalties.

In 1860 part of the area was named Forest Hill for the splendor and abundance of timber and native vegetation, and woodcutters, charcoal burners and orchardists settled there.

By 1865 a census revealed that there were 1136 people in the area called Nunawading. Most of them lived in wattle slab and daub roughly- built homes valued at 10 pounds each, and in 1870 Blackburn Rd, a north-south artery, was made to link Nunawading and Mulgrave.

Tally Ho is a rich historical location. Fronting Highbury Rd (originally named South Boundary Rd.), it was the venue for a hunt club organised from a mansion called Syndal owned by Sir Redmond Barry, a judge, first Chancellor of Melbourne University, prominent citizen and land owner.

The riders met for their Stirrup Cup at Tally Ho Inn, adjacent to the corner of Blackburn Rd. and Highbury Rd. Today, the oldest operating school in Nunawading - East Burwood State No.454 - is at this location.

The property at Tally Ho came under the ownership of the Hoadley family. They developed a fine farm, and from a modest beginning a highly successful sweets manufacturing business. In 1900 after talks with the Rev. George Cole, a Methodist minister who was supported by Wesley Central Mission, and hearing of a planned church program for the assistance of young lads with social problems, the Hoadley family made a gift of the 130-acre property to the church.

A general-purpose farm was established, and a wonderful work program to assist young people eventuated. This work has continued with a high success to this present time.

The 15 blocks, with all services including underground power, will be auctioned on this historic site in a seated marquee in Lincoln Rd.(off Highbury Rd) on Saturday March 17th at 2.30pm.



The development of the land, which is now the Tally Ho Industrial Park as it was in 1995. The land was owned by Abel Hoadley (of Violet Crumble fame) and then Wesley Central Mission, who developed the Tally Ho Boys' Village from 1900.

Notes from the Secretary

Welcome to new member, Jenny Swyer of Blackburn North , who has already spent a few hours with the Wednesday working group learning the photographic cataloguing system.

Next Meeting - 12th December - commencing 12 noon

Our guest speaker for this meeting is Rosalie Whalen, a member of the society and a descendent of the Schwerkolt family. Rosalie has been researching the family history and is happy to share this information with our members. I am sure that this will be an interesting talk and may reveal some information unknown to our researchers.

As is traditional for the last meeting of the year, we will meet for lunch at 12 noon. with the meeting to begin at 1.30 p.m.

Please bring a plate of lunch to share with friends.

At our October meeting our speakers, Chris Adams and Tracey Gosby discussed the plans for the extension to the Eastern Freeway and many members were shocked at the possibility of the Deep Creek Road overpass being at electric pole height and were concerned at the possible destruction of the bushland along the beautiful Mullum Valley. We would certainly lose our rural atmosphere. Would a tunnel the whole length of the valley be the answer? Let's hope that those who make these decisions appreciate our heritage and the beauty of nature!

Raffle Books - Would members please ensure that all raffle books are returned on or prior to the meeting on 12th December. If this is possible we will arrange to pick them up.

Our Best Wishes to those members who are not well at the moment - may the Festive Season bring you joy and may you return to good health in 1999

Barbara Gardiner

Friends of Schwerkolt Cottage

This year's Wisteria Party was marred by a torrential downpour, which was a real shame as so many of the children had come dressed in fancy dress - we were able to conduct only one of the old fashioned picnic races (i.e. egg and spoon race) and the grand parade was impossible. The crowd stayed in good humour, enjoying the music of the Brumbies Bush Band, who played on in true show business style.

Thanks to the City of Whitehorse for again allowing the children free admission to the Cottage. and finally our thanks to all the helpers - a great team effort by everyone.

T- Shirts

Our T-shirts will make a great Christmas gift for family members or maybe buy one for yourself!

Price - \$15

Can you help us?

Has any member a copy of "The History of Nunawading" by Niall Brennan, which they would be willing to donate to the Society. We would be very grateful.

SNIPPETS FROM THE PAST

From the Society Newsletter - May/June 1979

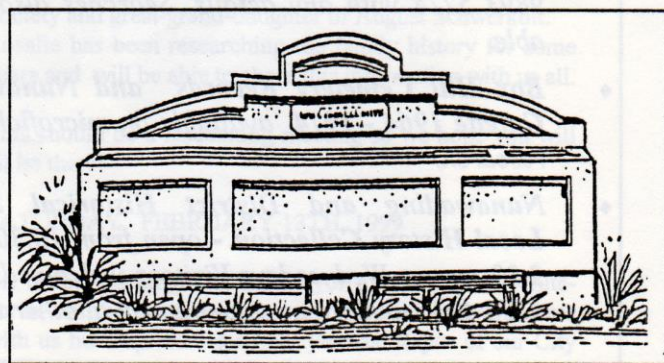
Horse troughs were erected throughout the City of Melbourne and within the boundaries of Nunawading through the good will and kind thoughts of Annis and George Bills. The troughs were constructed of concrete and had inscribed upon the "Donated by Annis and George Bills, Australia" Australia being the significant word.

The cement troughs were erected from a bequest left by Annis and George Bills for the welfare of animals, and as this bequest covered the whole world, drinking troughs for animals were found in nearly every country of the world and in Ireland they were erected for donkeys.

George Bills was born at Brighton, England in 1859 and came to Australia as a young man. When he died in 1927, after some personal bequests, the income from the residue of this estate was to be used for providing drinking troughs for horses, for the purpose of preventing cruelty and for the alleviation of suffering of animals in any country. Subsequently, more than 500 troughs were erected in Australia and some in overseas countries. Local government was responsible for the provision of fresh water. After the Second World War, the decline of horse traffic meant the troughs were no longer needed.

The last horse trough in the municipality is on the corner of Blackburn Road and Canterbury Road.

Typical "Bills" Horse Trough





Our Wednesday Working Group paused from their work to have their photo taken - Back Row - Norm Foun, Peter Simmenaur, Joan Sach, Mary McCormack, Ted Arrowsmith, Front Row - Jill Sampson, Rae Matthews, Anne and Kate Jones, Frances Warren, Barbara Keene, Valda Arrowsmith and Barbara Gardiner.

Joy Kenny and Bruce Reynolds missed the photo opportunity. Thanks to Wendy Rees-Harrison for taking the photo.

Thanks from the society to our members:-

To Ian Armstrong, of Drake Real Estate, Mitcham, who gave us our extra computer for which we have purchased a supplementary Inmagic program to be used to input data on to the database.

John and Rose Vincenzi of Discount Framing, 181 Springvale Road, Nunawading, did a great job of framing a map of the Shire of Nunawading on which we have marked the clay production sites. Thanks to John and Rose

Valda and Ted Arrowsmith and their son-in-law Brien Connelly have made a great contribution to this project, with research and knowledge of map reproduction.

REMEMBER

- ◆ *Street Name Project - contact Anne Jones 9893 5274 with any details. Searches also available.*
- ◆ *Box Hill Cemetery Records and Nunawading Gazette 1964 - 1974 available on microfiche for research.*
- ◆ *Nunawading and District Historical Society Local History Collection - open from 10.30 am to 2.30 pm on Wednesdays. Visitors welcomed. Ring 9873 4946 to make an appointment at other times.*

Nunawading & District
Historical Society Inc.
Schwerkolt Cottage
Museum Complex
Deep Creek Road
Mitcham 3132
PO Box 272
Mitcham 3132
Telephone: 9873 4946
(Melway Ref 49 D7)



The N&DHS acknowledge
support from
The City of Whitehorse



MAR/MAR/MAR

Museum Accreditation Program
Registered Museum

ISSN 1328-2395

Newsletter Editors

Barbara Gardiner
Ted Arrowsmith.

Typed by

Barbara Gardiner
Ted Arrowsmith.

Mailing Assistance

Val Riches