

# NUNAWADING HISTORICAL SOCIETY INC.

President - Valda Arrowsmith 9874 1414  
Secretary - Barbara Gardiner 9874 6592  
Treasurer - Barbara Rogalski 9874 4668



Series 5 No. 2.

June - September 1996

All mail to be addressed to P.O. Box 272 Mitcham 3132 - Museum Telephone: 9873 4946

## PRESIDENT'S REPORT

Dear Members,

Since my last report to you regarding the discussions with the Commissioners and staff of the City of Whitehorse, some change of direction has happened in that the City of Whitehorse has established a Cultural Development Advisory Committee with subcommittees covering Cultural Events, City Art Collection and Heritage.

The Heritage Sub-committee's role entails liaison with Historical Societies, advice to Council on heritage and historical matters, feedback to Council on Heritage Policy, feedback to Council on management strategies for Council's Heritage facilities, and recommendations on street/place names. Your committee nominated me to apply for membership of that sub-committee to represent our Society.

We have continued to meet with representatives of Box Hill Historical Society and have formed an interim committee to ensure our policies are compatible and we are not duplicating activities.

Following the cataloguing workshop held last year, we have progressed quite well. We meet on the first Saturday of each month at 1.30 pm and if you would like to join the group or have a "refresher", we propose to do a run-through of the system at our next meeting, this Saturday, 1st June.

We have applied to Arts Victoria for a grant of \$5000, plus "in kind" assistance from the Nunawading Historical Society which will enable us to install a computer, allowing easy access to our material.

The Society is seeking to hear from members interested in recording **Oral Histories**. Much work needs to be done in this area to ensure valuable recollections of the older members of the community are preserved.

I look forward to seeing you at our next General Meeting on 8th June.

With Best Wishes from Valda Arrowsmith

## JUNE MEETING

**OUR NEXT MEETING WILL BE AT 1.30 pm ON SATURDAY, JUNE 8TH IN THE MUSEUM ANNEXE AT SCHWERKOLT COTTAGE. OUR GUEST SPEAKERS WILL BE MEMBERS OF THE HAND TOOL PRESERVATION SOCIETY WHO WILL SHOW RESTORED HAND TOOLS AND WILL GIVE ADVICE REGARDING OUR COLLECTION OF HAND TOOLS.**

Members may wish to bring along grandfather's spoke shave or father's plane for advice on restoration.

## VISIT TO MONT DE LANCEY

Over 20 members visited the homestead which is situated in Wellington Road, Wandin North, on 31st March. Mont de Lancey is the home of the Wandin and District Historical Museum Society and is a remarkable achievement for a community working together. Members enjoyed the beautiful garden and the museum displays, as well as the delicious afternoon tea. A visit is highly recommended for those who were unable to attend on that day.

## FEBRUARY METING

Denice Moorhouse, who was the first person the Nunawading Council arranged to compile a history of the area, told us of how she first became interested in history, wrote up the reports of the Council Meetings for the Mitcham Advertiser and shared some of the stories told by those interviewed for the proposed history. A copy of portion of her history is in our archives. The Moorhouse Papers are held at the Public Record Office, Cherry Lane, Laverton as part of the City of Nunawading Collection.

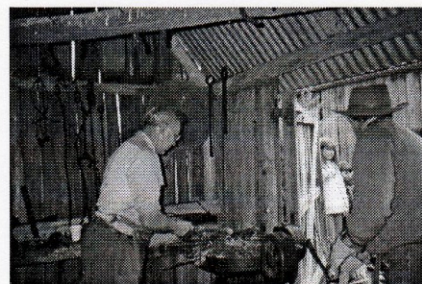
## HERITAGE FESTIVAL

At our meeting on April 13th, over thirty people listened intently to Mr. Ron O'Neill who worked for nearly forty years with the City of Nunawading, in the planning department and later as Strategic Planner. On a huge 1960 map of the City, he pointed out the various areas of development and needs. Members were interested to see the areas of orchards and quarries which are no longer part of the city. In 1984, the council looked at the long-term development needs and devised a strategic plan, which was entitled "Nunawading 1999".

Open Day on Sunday 21st April - Despite the cloudy weather, about 200 people visited the Schwerkolt Cottage and Museum. Visitors were most interested in the display by members



*Photos taken of the  
"Blacksmiths in Action",  
Open Day 1996*



of the Australian Blacksmiths Association. Many of the younger generation had never seen a blacksmith "in action" before and were fascinated by the skillful craftsmen.

The Committee would like to express their sincere appreciation for the assistance on this day and especially for the working bee on April 20th. Apologies to those members who arrived later in the day - the work was completed quickly by the enthusiastic group of workers, so we were able to go home early!

### **HONOUR BOARD**

Omission from previous newsletter-The names of Ian Barker, Shirley Barker, George Cox, Doris Mattingley and Joan Rocznioek were placed on the Honour Board in recognition of their contribution to the society and to our precious heritage. Ian and Shirley were responsible for the handling of our finances for many years George was member of Committee of Management of Schwerkolt Cottage. Doris was a foundation member and secretary of the society. Joan was a former president and was most active as the Society's archivist.

### **WISTERIA TIME GARDEN PARTY**

Sunday 13th October, between 2 and 4 pm. Plans are going ahead for this special day for the children - once again, we will be entertained by Brumbies Bush Band. Keep this date free and bring along the children and grandchildren.

FRIENDS OF SCHWERKOLT COTTAGE will meet at the Museum Annexe, Schwerkolt Cottage on Monday 26th August at 10 am to confirm plans for the garden party. All members of the society are welcome to attend this meeting.

### **ANNUAL GENERAL MEETING**

Our ANNUAL GENERAL MEETING will be conducted on Saturday, August 10th at 1.30 p.m. Our guest speaker will be Mr. Bruce Reynolds, local antique dealer, whose interesting artifacts should create great interest.

### **NEWS OF MEMBERS**

Doris Mattingley is making a good recovery following her recent illness and hopes to see us on June 8th and Beryl Gray is progressing well after surgery at St. Vincent's Private Hospital.

We welcome new members, Anne Munro, Ian Rea and Bernadette Cahill and hope they enjoy their time with the society.

Barbara Rogalski has received correspondence from Schwerkolt family member, Mrs. Jack of Pittsburgh, U. S A., in which she enclosed some interesting family photos for our collection.

### **FROM THE ARCHIVES**

BUILDERS ROOFING AND TRADING CO. LTD. started out as hardware merchants with an office in the city either in Flinders Street or Flinders Lane about 1920. They purchased the Monarch Pottery (hence the alternative name) early in the 1920's. The

Monarch had been established some years earlier and was not involved in tile making at this stage. Builders Roofing and Trading commenced making tiles early in the 1920's.

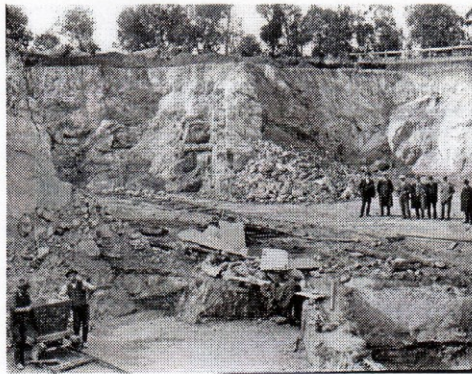
Mr. Farhall, who was earlier involved in building with the Victorian Railways and later was a contract builder who built a number of federation style houses, became the outside representative of the Builders Roofing and Trading Company. When they commenced making tiles he became the manager at Mitcham. Shortly afterwards they closed down the hardware business in the city.

Mr. Farhall managed the works until the late 1950's when he handed over to a Mr. Briggs. Later a Mr. Moss became manager and he closed down the business in the early 1960's. Mr. Farhall had been a shareholder and later a director of the company. He died in 1961.

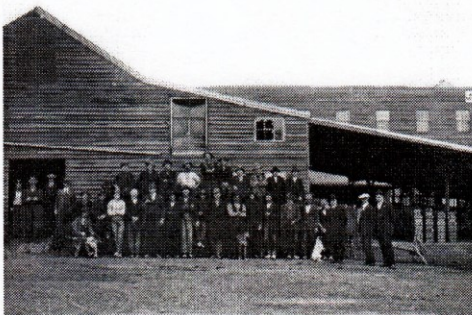
Names remembered were Barney Ward and Tom Savage both of whom lived in Mitcham and were known to Ted Arrowsmith. Also mentioned were Bill Barton (a driver), Mark Radford (foreman for a number of years) and Gordon Woolard (a traveller).



The original tile making plant was driven by a 100 horsepower electric motor driving a single shaft 60-80 feet long. All machines were belt driven from this shaft.



In the mid to late 1930's the plant was duplicated to double the output. The new plant included a tile press which weighed about 15 tons. Each individual machine was now driven by its own electric motor.



Ted Arrowsmith's father and grandfather both worked at the tile works from the early 1920's. His father worked until about 1940 as a pattern maker or tile moulder. He was rejected when he attempted to enlist in the A.I.F. and was trained in the manpower training scheme as a turner and fitter and worked in that industry for Ingersoll-Rand.

(Information adapted from notes on a discussion between Ron Farhall (son of Mr. F. Farhall) and Ted Arrowsmith of the Nunawading Historical Society on 1st Feb. 1996.)

*3 photographs from the original glass plate negatives. These photos were taken by Mr. Farhall in the 1930's.*

**Newsletter Editor:** -Beryl Gray 9874 2731  
**Typed by:** Barbara Gardiner & Anne Jones  
**Photo scanning by:** Anne Jones