

Nunawading and District Historical Society Inc. NEWSLETTER



A0012235J ABN 44 352 041 634
Series 9. No.12 December 2001

All mail to be addressed to P.O. Box 272 Mitcham 3132 - Museum Telephone 9873 4946

From the President

What a busy time the Historical Society had in October! At the Wisteria Party, a large number of visitors enjoyed the hospitality of our Society, followed a week later by the Whitehorse Spring Festival. Much interest was shown in the display mounted by Society members. Thank you to this small band of volunteers, who so generously gave their time to make both these events a success.

In this the year of Volunteers we are indeed blessed with the dedication and unselfish contribution of their time by our Volunteers, to enable our Society to continue its important work of preserving the history of the City of Whitehorse. The Committee needs the support of you, the members of the Historical Society, to volunteer a small amount of your time, to help with whatever we are called upon to do. It may be a working bee or a display of support. What better way to learn about the workings of the Historical Society and make new friends.

The photocopier, which prints your newsletter and numerous other copies of items has of late been feeling its age. Thanks to a generous grant of \$2000 from the Nunawading Arts Council we have been able to purchase a new photocopier.

Our thanks also goes to the Blackburn-Mitcham Film Society who have copied a 8mm film on the the City of Nunawading as it was in the 1970s, to Video Tape and have donated a copy to our Society. A very suitable addition to our Archives.

The City of Whitehorse is looking to protect the remaining streets with blue stones kerb and guttering

in them. The policy is presently out for public comment. Most of the streets when the City was developing in the last century had these blue stone gutters. It is good that what remains will be preserved for their heritage value.

I look forward to seeing you at the working bee on the 1st December and our Christmas luncheon and General Meeting on the 8th December at 12 noon. If you can't come to lunch come to the meeting.

On behalf of the Committee and myself, we wish you all a happy Christmas and a new year of working together.

Judith Fry.



DECEMBER MEETING Saturday 8th December 2001 at 12 noon.

This will be our Christmas meeting and we will have lunch together commencing at 12noon. Please bring lunch to share. The General Meeting will follow at 1.30pm, after which two of our recently joined members, Charlie and Lorraine Findlay will speak on their exciting and unexpected finds in the pursuit of collecting bottles and their history.



MISSION STATEMENT

The purpose of the Society is to foster historical interest and knowledge. To collect, document, research, preserve and exhibit items that show how people have lived and worked in the development of the Whitehorse area from human settlement to the present day.

Wisteria Garden Party

This event was a great success once again. Our thanks to all our members who helped on the day, to "Cuddles and Kisses" Animal Farm and to the Brumbies Bush Band. The children really enjoyed the animals and all ages were singing along to the music (especially to "Home among the Gum Trees?"). We even had people dancing to the music!

More than 150 adults paid to view the Cottage and Museum plus the many families who came to enjoy the entertainment. Our appreciation to Anne Munro for organizing the races - the egg and spoon race and the sack race were lots of fun for the competitors and the onlookers.

The big question is - Should we change the date of this event? The wisteria was always at its best on the second weekend in October but the seasons seem to have changed - maybe the last weekend in September would see the wisteria looking its most beautiful?

Barbara Gardiner
for Friends of Schwerkolt Cottage.



Enjoying the Animal Farm



Egg and Spoon race

"No Place for a Colony"

- is the story of Sullivan Bay, Sorrento and the Collins Settlement, by Richard Cotter and has recently been published. The book comprises 150 pages, is illustrated. The cost is \$28.00, postage and handling included, to members of Historical Societies. Send cheque to Book Offer, PO Box 135, Blairgowrie, Vic, 3942 or E-mail rcotter@cdi.com.au

The Internet and our Web Page.

Members will be aware that we are on the Internet - www.vicnet.au/~ndhsinc/. I have my E-mail address on it for any inquires from people interested in our activities. In recent weeks I have received three inquiries - from Dubbo, seeking information on a relative; from a Vermont resident seeking information on a house recently purchased and from New Zealand seeking details about a resident who purchased land in the 1850s.

It is good to know that people are interested in the information we have collected.

Ted Arrowsmith

Recent Acquisitions.

Recently we purchased a two speed breast drill, the forerunner to the electric drills we have all come to accept. To extend the collection we would like to obtain an early electric drill. Does any member have or know of an electric drill 1950 vintage.

New Photocopier

Thanks to the generosity of the Nunawading Arts Council in granting us \$2000, the Historical Society has been able to purchase a much needed replacement for our eight year old LANIER photocopier which had become unserviceable.

The new copier, a KYOCERA MITA KM1530, will handle A3/A4 paper, employs digital technology, which improves copy quality, is less liable to paper jams and runs more economically. It is capable of providing up to A3 laser prints with a suitable upgrade. The supplier is Central Business Systems, Whitehorse Road Blackburn, with whom we also have signed a service agreement.

Peter Simmenauer

DATES FOR YOUR DIARY

Sunday, 16 December, 8pm , Carols by Candlelight. Whitehorse Soundshell 379 Whitehorse Road, Nunawading.

Saturday, 26 January, 6-9.30pm Australia Day Twilight Concert and Fireworks. Whitehorse Soundshell, 379 Whitehorse Road, Nunawading.

Saturday, 9th February 1.30 pm is the date for our first meeting in 2002, when the Mayor of our City, Cr. Bill Bowie will speak of his year in office and future plans for our City.

Sunday, 7th April, 12 noon to 4pm will be our **OPEN DAY** during the **Victorian Heritage Festival** being conducted between 30th March and 14th April. Theme is "Beyond the Big Smoke"

NEW MEMBERS

We extend a warm welcome to Gordon Inches of Mitcham and to Julie Gamble of Templestowe. Julie's ancestors were among the early settlers in the old Shire of Nunawading. She has joined our Wednesday Group.

From the Archives

The following is a letter to the Editor of the Nunawading Gazette dated 17th April, 1982 from Alan Macgillycuddy Figgis (aged 84) and gives an insight to life in the old Shire of Nunawading (now City of Whitehorse) in the early 1920's. This item was revealed when Jill Sampson was recataloguing documents.

Sir,

I wonder if your readers are aware of the original Nunawading Park Tennis Club which flourished more than sixty years ago. The court and small pavilion were situated at the corner of Canterbury and Middleborough Roads - now apparently included the R.H.L. Sparks Reserve.

This was then in a delightful rural setting undisturbed by passing traffic. The club members were mainly comprised of folk living near-by, of both sexes. No talk of women's lib in those days.

The members were responsible for maintenance of the court under the direction of a kind elderly Mr. Burroughs, who kept a fatherly eye upon the property and could always be relied upon for making excellent billy tea on Saturday afternoons.

My old friend, Burt Paton and I, both living at Canterbury, would take the train to Box Hill then travel by cab to the Park at the cost of one shilling! After the game we would return across the paddocks in the cool of the evening to the Box Hill station passing the substantial home of the late Mr. Andrew Wilson enroute. These were indeed wonderful times of simple fun and enjoyment.

My association with the cities of Box Hill and Nunawading - the Railway Station of the latter being Tunstall - extends over many years. As a bank clerk with the E.S & A. Bank Ltd, Box Hill, it was my duty on certain occasions to conduct from that branch one man agencies at Blackburn and Mitcham, once or twice weekly and later under the control of Ringwood branch those at Boronia, Bayswater and Croydon, also Upper Ferntree Gully and Belgrave.

In this connection it is interesting to note that the E. S. & A. from Burwood Road Branch onwards was the pioneer bank at all these and other points except Belgrave where the writer opened an Agency two weeks after the C.B.C. Ltd in order to protect our considerable business in that area.

You are at liberty to publish any or all of this material, and that forwarded under separate post, if considered of sufficient interest, returning the snap shots.

Yours faithfully,

A. Figgis

On a separate sheet Mr. Figgis listed some of the members of the original Nunawading Park Tennis Club.

"The Misses;" - Alma Roberts, Edna Roberts, ? Gartner. Ollie Gartner.

"Messrs"

Lisle Roberts

Will Gartner

Jack Gartner - later an Accountant

Dave Davies

? McCracken

Burton Paton - Later a leading Perth accountant - still resident there.

Mac Ball - To become Professor of Political Science - W. McMahon Ball at Melbourne University

Aubrey Ball - Afterwards J.A Ball, head of Mentone Boys' Grammar School - deceased

Alec Boyce-Gibson - To become Professor of philosophy at Cambridge and Melbourne Universities -deceased

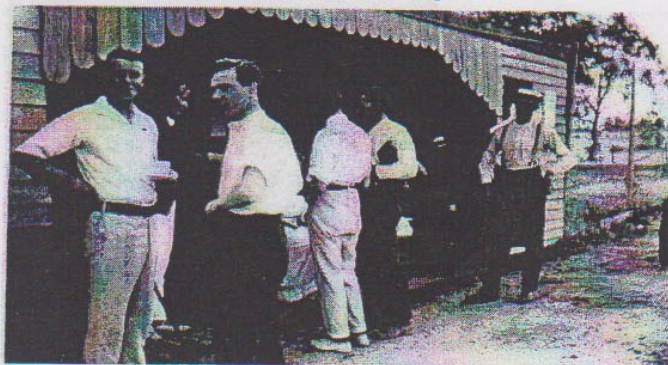
Keith Boyce-Gibson - Died as a very young man during a climbing expedition Mt. Snowdon (Wales)

Don Wilson - eventually a medical practitioner

Alan Figgis - Bank Manager and auditor, now at Strathdon.



Alec Boyce-Gibson, Burton Paton, Alan Figgis W. Macmahon-Ball and David Davis Preparing the new tennis court for their club



? McCracken, B. Paton, Two not identified and Will Gartner outside the

Cataloguing the Collection - Current Status

Artifacts	Items catalogued	2906
Documents	Items catalogued	3459
Photographs	Items catalogued	2420

REMEMBER

Box Hill Cemetery Records and Nunawading Gazette for 1964-1974 available on microfiche for research.
Nunawading and District Historical Society Local History Collection - open from 10.30 am to 2.30 pm on Wednesday
Visitors welcomed. Ring 9873 4946 for an appointment at other times.

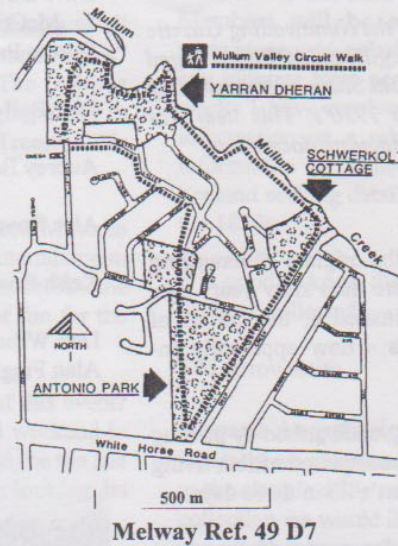
President
Judith Fry 9874 4220
Secretary
Peter Simmenauer 9877 0141
Treasurer
Barbara Rogalski 9874 4668

Editors Barbara Gardiner
 Ted Arrowsmith

Distribution Val Riches

Our Society on the Internet.

www.vicnet.net.au/~ndhsinc/



*Nunawading and District
 Historical Society, Inc.
 acknowledge the support
 from the
 City of Whitehorse*

Museum Accreditation Program

MA/MA/MA
 Accredited Museum

ISSN 1328-2395



Can you help identify?

Another photograph from from our collec-
 tion for which we have no information.

***Nunawading and District Historical Society Inc.
 Schwerkolt Cottage and Museum Complex.***

Deep Creek Road, Mitcham, Vic, 3132 (Melway Ref. 49 D7)
 if undeliverable please return to P.O.Box 272 Mitcham, 3132, Vic

