

# 1965



# 2005

## *A Special 40th Anniversary Supplement Pt 1*

### **Nine years, not a decade: some recollections**

*Bill Gray, President 1985-1994*

In the nine years I was President of the Nunawading Historical Society, there were a number of occasions and issues worthy of note in the continuing growth of the Society. I list some of these not necessarily according to their importance nor chronological order in which they occurred.

- ◇ Incorporation
- ◇ Provision of a place for archives and a meeting room
- ◇ Purchase by the City of the "old Strathdon" orchard
- ◇ Display with Westpac travelling Museum at the Westpac bank in Mitcham followed by a cocktail party and presentation of a cheque

My wife Beryl and I joined the Society after enjoying a trip to Ballarat which had been arranged by members of the Society.

Looking through old notes for talks to various groups, I found some interesting details. Following the refurbishing of the Cottage, the Society was formed in 1965: Mr K. Ince, as the Vice - President, Mrs Nancy Leach, Secretary, Mrs Graham as Treasurer, and members Mr K. Satchwell, Mr G,



*This photograph thought to be circa 1967 – 1970 with Society members at the complex is one of our earliest informal images of the membership and thought to include the Barker family.*

Neve and Mesdames Pat Faggetter, Jean Field and Doris Mattingley.

Beryl and I joined the Historical Society, some twenty years later, when Joan Roczniok was President and was also trying to obtain and secure archival material relating to the local area.

At one stage, there was no permanent President, with members taking it in turn to chair meetings.

Archival material was held securely on Council Premises, as the Society had no place of its own. Meetings were held at the homes of members.

Some as I recall were at the homes of the Hilliers, the Mucklestons, the Barkers, the Mattingleys and the Bates

***Whitehorse Historical Society Inc.***  
*Formerly Nunawading & District Historical Society*



1965



2005

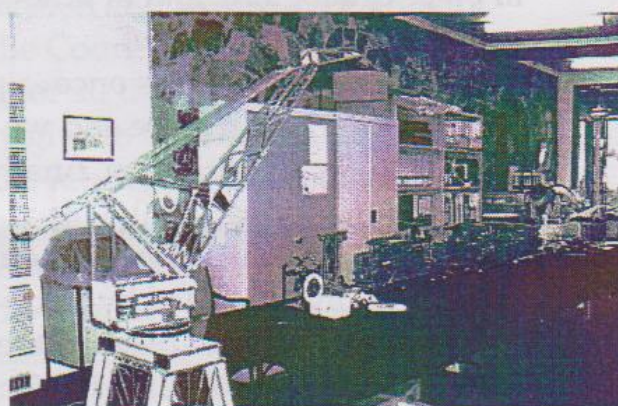
## *A Special 40th Anniversary Supplement Pt 2*

*In part 1 of this supplement Bill Gray shared with us some of his memories and recollections of Society*

*In part 2 Valda Arrowsmith gives us an overview up to the present day. As outlined there have been many activities and achievements in the*

*last 40 years but we seem to have only recorded them visually for the last 20 or so!*

*The following 'mini album' of images in this section are of more recent times - but there are some familiar faces and occasions recalled.*



*A few glimpses of Open days at the Schwerkolt Cottage & Museum Complex  
More inside and on back page*

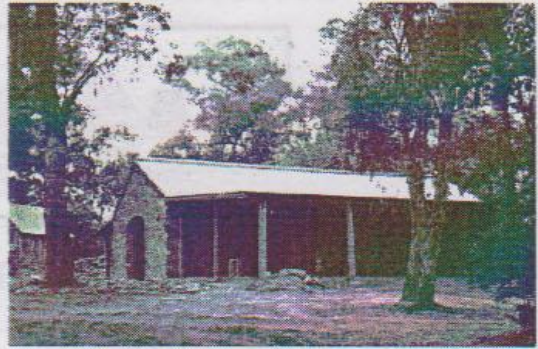
**Whitehorse Historical Society Inc.**  
*Formerly Nunawading & District Historical Society*



Following the formation of the Friends of Schwerkolt Cottage, a group who initially were concerned that the surrounds of the complex may be fenced off resulted in an increase of the membership and more people offered to help with the Historical Society.

In 1995 Barbara Gardiner who had taken on the role of Society Secretary heard of a program organised and managed by Museums Australia (Vic) called the Museum Accreditation Program (MAP) designed to improve standards in all museums. A full day workshop was held with about 20 members taking part. The workshop was conducted by Ms Barbara wells who trained volunteers to manage and care for the collection using correct conservation methods.

The Wednesday group was already in place cataloguing and in time expanded with additional volunteers; the processes once learned were put in place and we registered for accreditation, finally achieved in the year 2000. This major process required many hours of work by members led by a sub-committee in order to meet all the requirements of MAP. In addition, up to eight men worked on the implement shed, barn and smithy to sort, preserve and catalogue all items in these areas. At this time we also received \$2000 from Arts Victoria for a Conservation study. The MAP process is renewable after a five-year period and in 2005 was successfully repeated.



Top to bottom:  
*Museum nth view pre-implements;*  
*MAP inspections (mid 2images);*  
*30<sup>th</sup> anniversary celebrations*





We also needed to promote the Schwerkolt Cottage & Museum to both local and wider community. For the past ten years we held a Wisteria Garden party in October and, along with the Heritage Open Day and with the Council's program to schools we have achieved an increase in visitors to the Complex.



Another milestone was passed in 2003 when members voted to change our name to the Whitehorse Historical Society Inc.

In 2004 we launched the book "*Schwerkolt Cottage & Museum – The Legacy of Johann August Schwerkolt*", another successful means of raising our profile in the community.



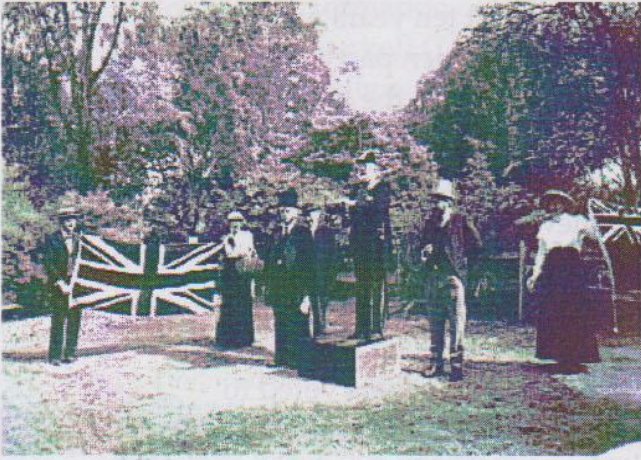
In recent times the Society was again very pressed for space with the correct and adequate storage conditions for the collection. A submission was forwarded to the Whitehorse Council for an extension and we are very grateful to the Council for their assistance and for all the general support that they give to the Society. As we look to the future, the Council has appointed a consultant to do a 'Sustainable Museums Practice review' which we hope will include suitable plans for future development of the Schwerkolt Cottage & Museum Complex. This is a brief outline of achievements that have been possible through the dedication and time given by members to the Whitehorse Historical Society. A big thank you to all the members who have contributed. *Valda Arrowsmith*



Top to bottom:  
*Accreditation Certificate presentation*  
*Opening of the Annexe*  
*Visit & outreach to Swinburne*  
*Open day display one of many!*



## Some memorable moments



Top left: *Open Day 2001*

Top right:  
*one of our popular Fashion shows*

Lwr left:  
*Returning our postbox to display*

Middle right:  
*A sausage sizzle fundraiser*

Lwr left: *Doug & Margaret  
Livermore with Frances Warren &  
Ian Nethercote looking on*

