

Whitehorse Historical Society Inc.

Formerly Nunawading & District Historical Society Inc.



NEWSLETTER



A0012235J ABN 44 352 041 634
Series 13. No. 2 April 2005

All mail to be addressed to P.O. Box 272 Mitcham 3132 - Museum Telephone 9873 4946

From the President

We have just had our "Family Heritage Day" timed this year to coincide with Senior Citizens Week. Many of our Members contributed to the day's success and visitors numbered in the hundreds. What a wonderful day it was! The weather was perfect and all went like clockwork under the able direction of our events organizer, Barbara Gardiner.

A number of accolades must be given here. First the working bee under the leadership of Ian Nethercote had everything sparkling for Heritage Day. You may have noticed the display cases in the museum have been changed and a display in the Nunawading Library in time for Heritage Day and to stay there for 4 weeks. These are time consuming tasks. Thank you to all involved in those eye catching displays and to everyone who turned up to help including those who assisted with the preparation and distribution of 1500 leaflets advertising this day, which took Historical Society members over part of three days of patient work folding and filling envelopes. Thanks to Box Hill Community Arts Centre for the opportunity.

The "Wednesday Working Group" undertakes many of these tasks and more. They are a friendly group, who give their time in a number of areas. Some bring their lunch and stay the day; others come for a couple of hours. Anyone with time to spare is welcome.

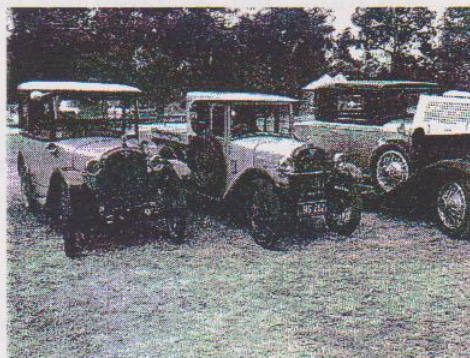
At our first meeting for the year and at short notice Mr David Crowe, Manager of Parkside, City of Whitehorse was our very interesting replacement speaker for February. David is a local resident, having attended Mitcham Primary School and has lived in Thames Street, Box Hill, Ormond Avenue, Mitcham and in Vine Street Blackburn.

Parkside has a nursery at the Horticultural Centre, Forest Hill, which is accredited by the Nursery Association and has responsibility for landscape maintenance in car parks, shopping centres, median strips, bush areas, wetlands, parks & sports ovals.

David liaises with many Advisory Committees and has over 100 volunteers in a "hands on" involvement in caring for our local environment. Everyone enjoyed David's talk and his Av presentation featured familiar views and some wonderful photography of flora and fauna.

Our next meeting will be on Saturday 9th April and I look forward to seeing all who can attend.

Judith Fry



The Austin 7 club of Victoria kindly showed some of their handsome vehicles at the WHS Heritage Day 2005. Cars seen here include Austin 7 and Stutz models.

Next Meeting April 9th

at the Local History Room
Meeting at 1.30

Guest Speaker Mr David Gawler on
"The life of Cr Ian Gawler, co -Architect of the
Box Hill Town Hall, 1935"

MISSION STATEMENT

The purpose of the Society is to foster historical interest and knowledge. To collect, document, research, preserve and exhibit items that show how people have lived and worked in the development of the Whitehorse area from human settlement to the present day.

From the Archives

Prior to one of the one of the most significant advances in 20th C.. communications the Personal Computer, the Word processor linked to a mainframe or sometimes a stand alone unit heralded the demise of the office typing pool..

The quick brown processor...

Functions of the latest word processing machines were the centre of attention at Riddell's new Commercial College Box hill, when it was officially opened by Mayor Cr Roger Cordery.

The Mayor performed the opening ceremony by cutting a *typewriter ribbon*.

According to the principal of Riddell Business Colleges Mr Malcolm Riddell, the College is the most modern in Victoria, and more than \$25,000 has been spent on refurbishing the premises at 38 Rutland Road, Box Hill.

He said "Emphasis will be placed on word processing and office procedure of the eighties.

Word processing usually handles the output of three conventional typists. However, those displaced by the introduction of such technology tend to be absorbed into functions ancillary [*sic*] to the word processing operation.

Fortunately word processing systems will increase secretarial job opportunities rather than diminish them there's no real unemployment for the trained"

*Eastern Standard,
Wednesday June 4 1980 page 12.*

New Displays

If you have not visited the museum for some time - make a date to call in soon and enjoy the wonderful new displays. Hard work by the Wednesday Workers has resulted in improved viewing of the collection. All the displays are much easier to see and new labels are progressively being providing stories behind the objects and notes on the context in which they were used. It's a long way from the early days when things were laid out on a few hessian-covered trestle tables!

Toys

Previously displayed in the crowded corner case, our well loved toy collection is now easily viewed by parents with toddlers .

Costumes

As many members know the costume collection is a speciality of this Society but it has always been difficult to display it satisfactorily. Our newly revamped corner cases now look really terrific showing off some familiar favourites and new items not seen before. This display will now be much easier to update and change for the enjoyment of our visitors. It will also be much easier to control environmental hazards such as dirt ,dust, insects and sticky fingers!

Kitchen life

With our move back to the newly extended Museum in 2003 work on an improved display of the kitchen ware from the collection has in turn freed up space in other display cases.

Communications

One such benefit is more space to show the variety of communications items with a range of writing implements and accessories through to the 20th C. miracle of wireless radios.

Sewing

An improved display of our sewing machines and sewing tools is now much easier to keep clean and shows off this impressive collection.

Some enjoyable trips down memory lane are to be had! The Museum is a great place to bring visitors. So *be counted* as a visitor and bring friends on a trip to your newly re-accredited museum . Just 40 years young this year!

WHS Dates for your Diary

Speakers for meetings in 2005

4th June

Sharron Dickman on the history of the Melbourne Athenaeum Library

13th August – AGM

Joseph Borg on the Maltese Historical Society

8th October

John McKernan on the history of Point Nepean

Working Bees 2005

Normally 9.30 am – 12.30 pm

- Saturday 14th of May
- Saturday 9th of July
- Saturday 10th September
- Saturday 12th November

Deadline for notices relating to heritage or any historical activities for inclusion in the newsletter need to be supplied by the 12th of the month preceding a general meeting

City of Whitehorse Events for your Diary

Heritage week 2005 – various events are planned for the week of :
Saturday 1 October – 8th October

Membership

A warm welcome is extended to new members: Niel and Heather Brain of Nunawading.

REMEMBER

Whitehorse Historical Society
Local History Collection

open 10.30 am to 2.30 pm Wednesdays. Visitors welcome.
Ring 9873 4946 for an appointment at other times.

Box Hill Cemetery Records & Nunawading Gazette for 1964-1974 available on microfiche for research

Vale *A copy of letter sent to the Mattingley Family following the death of their mother.*

On behalf of all members of the Society, we send you our sincere condolences on the death of your mother Doris.

In the 1960s, when the NDHS was being established, Doris was a committee member, and later was Secretary and Newsletter editor. She made a great contribution in many ways but especially towards the archive and document collection. Doris's efforts were invaluable and she left a legacy which the present membership appreciates as we continue the cataloguing of our collection. She would be proud to know of our recently achieved re-accreditation from Museums Australia (Victoria).

Your father, Grant, is also remembered for his practical help and the manufacture of the cradle in Schwerkolt Cottage, a replica of the cradle in the Latrobe Cottage. The Society would not be in the position it is today without the dedication of people like your parents.

Yours most sincerely
Judith Fry, President

Cataloguing the Collection - Current Status

Artifacts	3567	Items catalogued
Documents	5199	Items catalogued
Photographs	3095	Items catalogued

THANKS!

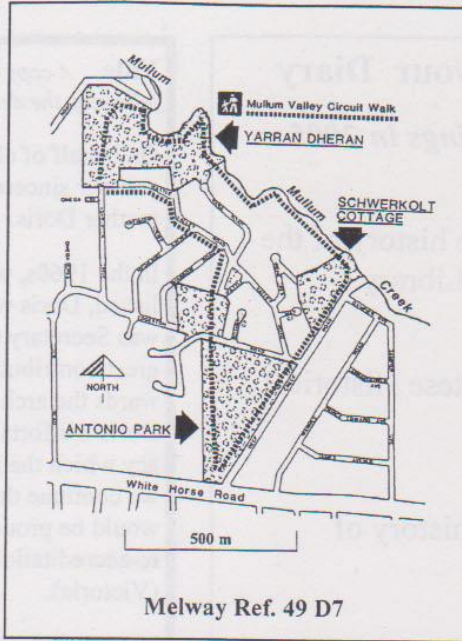
Tremendous support has been given by
Penguin Dry Cleaners
Tunstall Square, 59 Tunstall Rd
Ph: 98426642
www.penguindrycleaners.com.au


Notices / Announcements

Congratulations are due to Mr Bob Gardiner, who recently received a Merit Award and a 50 year Trophy from Athletics Victoria. Bob began his athletic career in 1953 and in addition to being a Triple Olympian and Commonwealth Games Silver Medallist, has represented Victoria many times.


President
 Judith Fry 9874 4220
Vice President
 Barbara Rogalski 9874 4668
Secretary
 Peter Simmenauer 9877 0141
Asst. Secretary
 Vicki Jones-Evans 9873 3383
Treasurer
 June Ventouras 9878 1659

Editor Jay Miller
 jmil@unimelb.edu.au
Distribution Barbara Gardiner
Our Society on the Internet.
www.vicnet.net.au/~ndhsinc/
Local History Room 9873 4946



CITY OF

 WHITEHORSE

Whitehorse Historical Society, Inc. acknowledge the support from the City of Whitehorse


 accredited museum
 ISSN 1328-2395

Our Historical Society 1965 - 2005

We hope you are all keeping in mind that this is the 40th anniversary of the Historical Society. We have some foundation members who still support us, for example, Shirley & Ian Barker, our Treasurers for many years. Many of our current members were around when the cottage opened and later joined the fledgling Society.

Judith Fry

In each of the forth-coming newsletters we will feature some snippets and snapshots of some key activities over this period..

Contributions from members who have photographs or memorabilia of the early days are very welcome .

The editor

Whitehorse Historical Society Inc.
Schwerkolt Cottage and Museum Complex.
 Deep Creek Road, Mitcham, Vic, 3132 (Melway Ref. 49 D7)
 if undeliverable please return to P.O.Box 272 Mitcham, 3132, Vic

