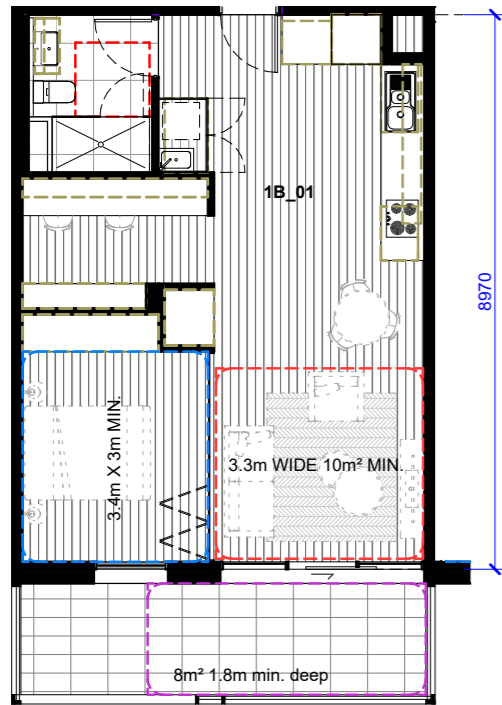
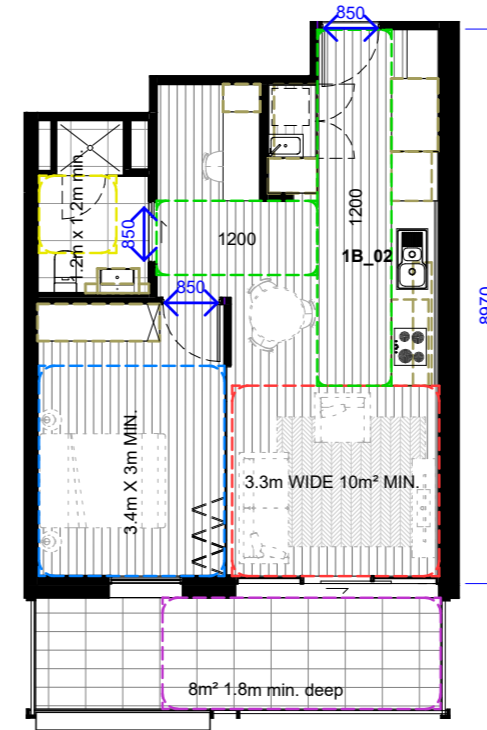
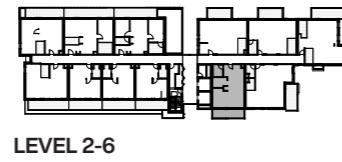


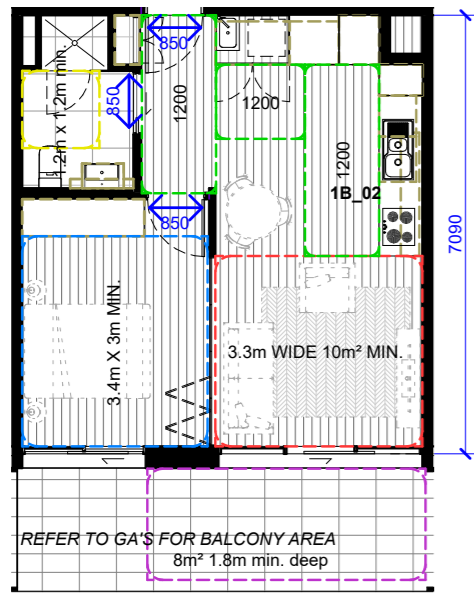
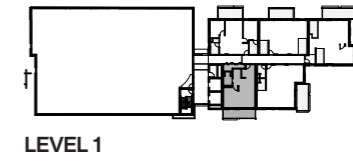
6.6 Apartment Typologies



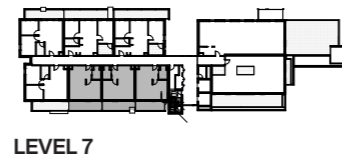
APT_1B_01
1:100



APT_1B_03
1:100



APT_1B_02
1:100

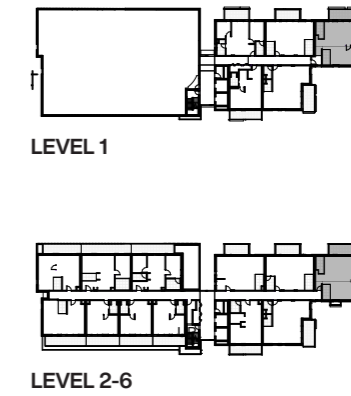
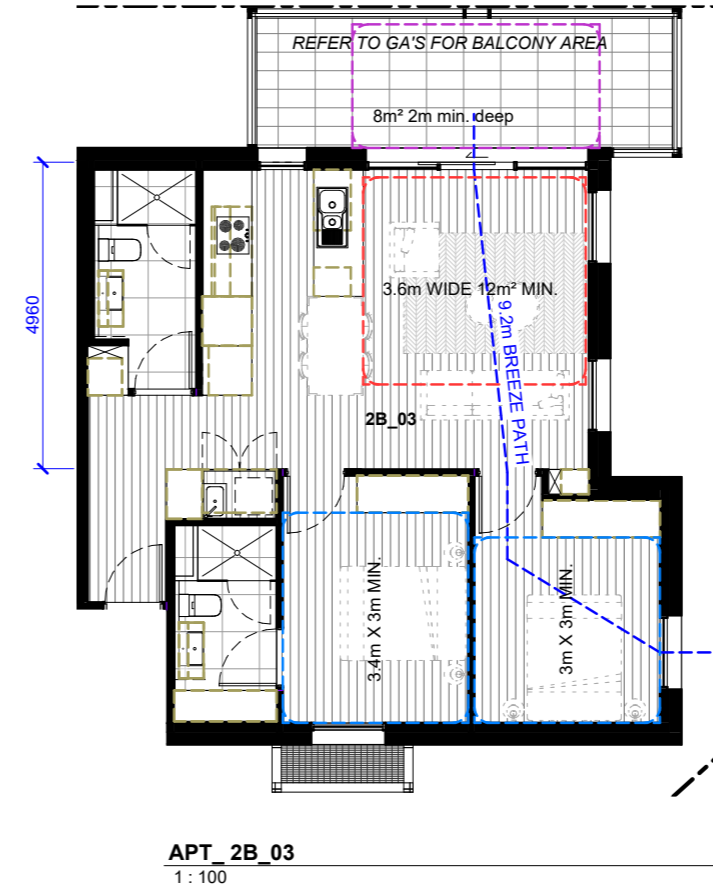
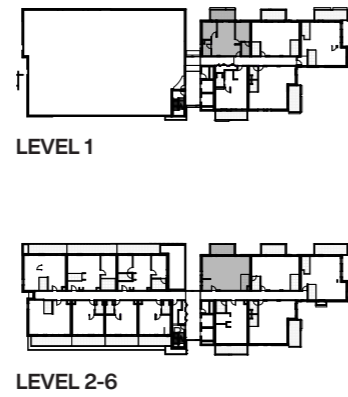
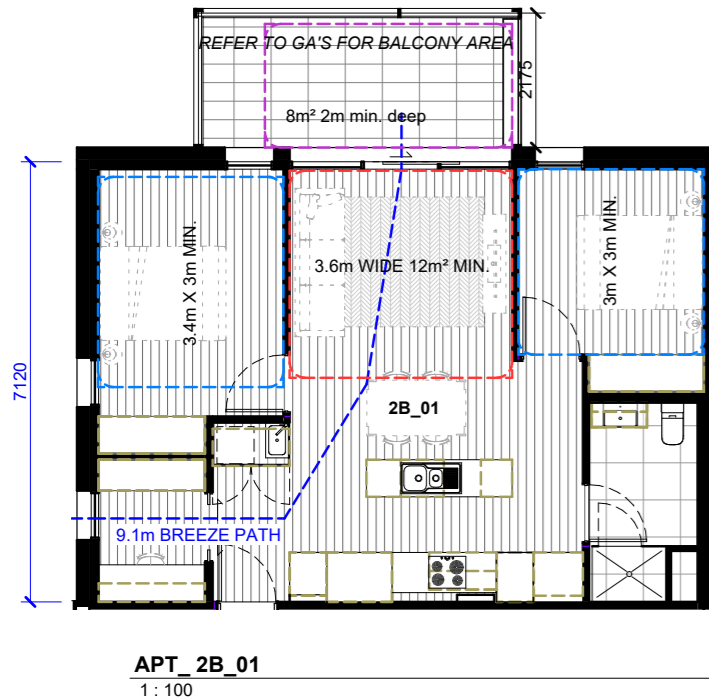


CITY OF
BALLARAT

This document has been copied and made available for the purpose of the planning process as set out in the Planning and Environment Act 1987. The information must not be used for any other purpose. By taking a copy of this document you acknowledge and agree that you will only use the document for the purpose specified above and that any dissemination, distribution or copying of this document is strictly prohibited.

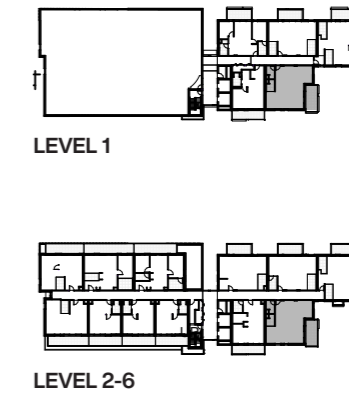
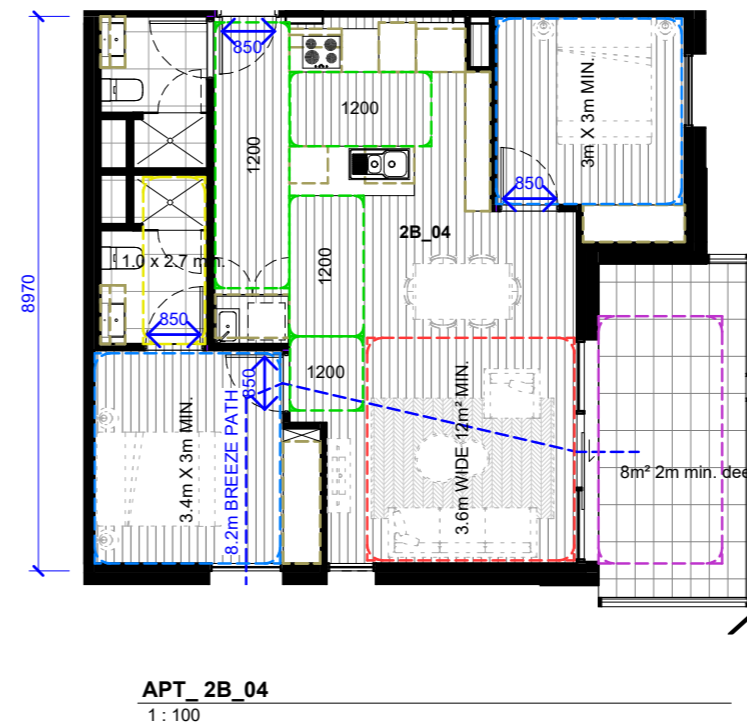
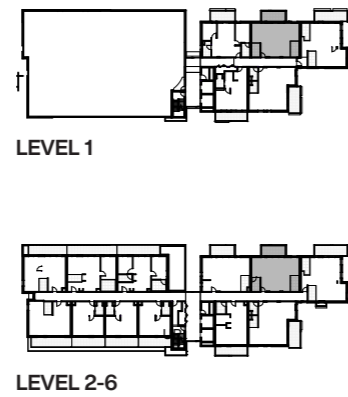
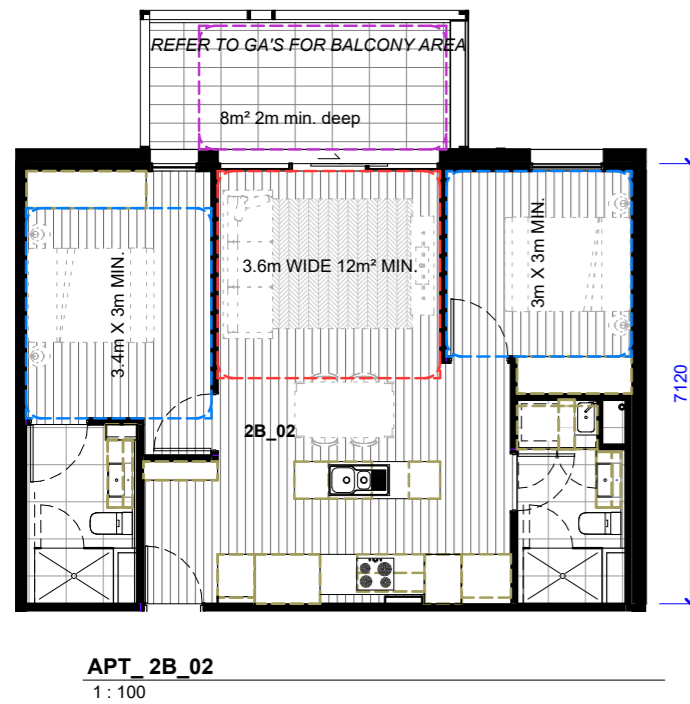


6.6 Apartment Typologies

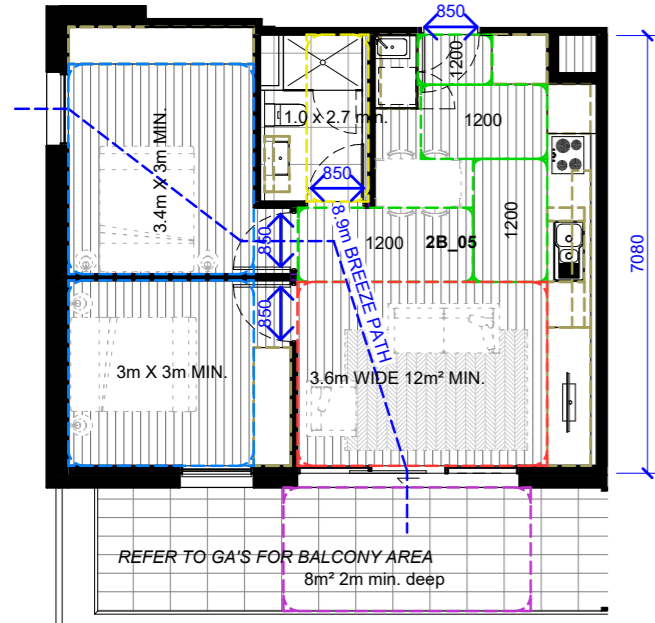


CITY OF BALLARAT

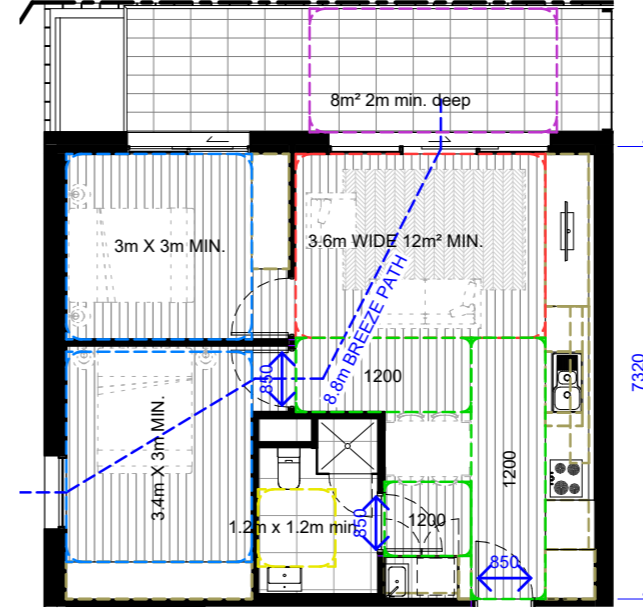
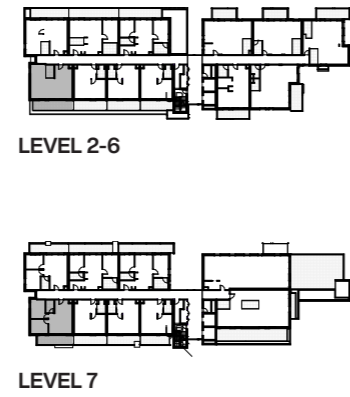
This document has been copied and made available for the purpose of the planning process as set out in the Planning and Environment Act 1987. The information must not be used for any other purpose. By taking a copy of this document you acknowledge and agree that you will only use the document for the purpose specified above and that any dissemination, distribution or copying of this document is strictly prohibited.



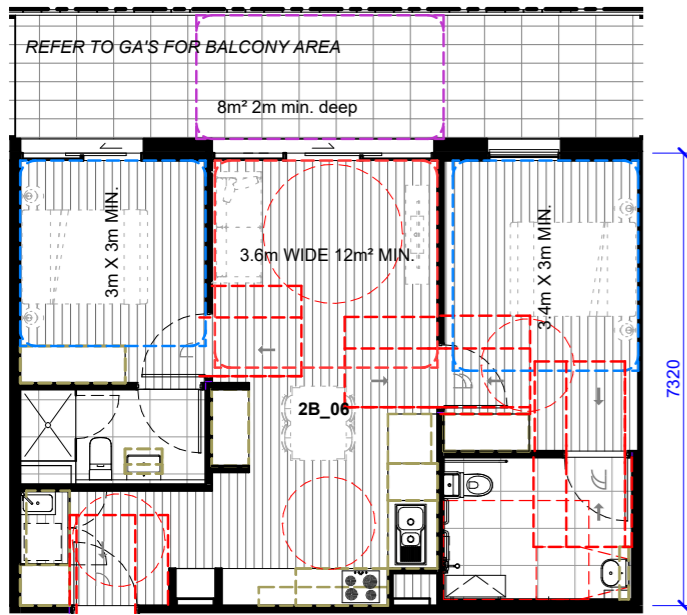
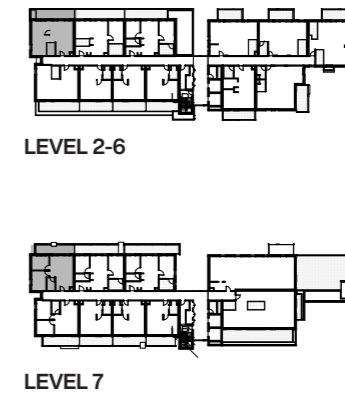
6.6 Apartment Typologies



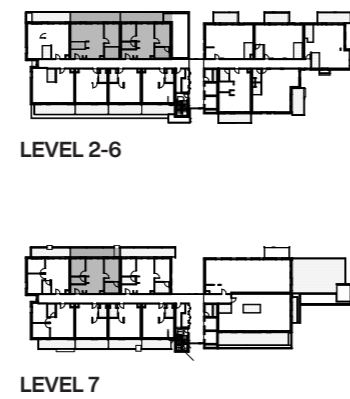
APT_2B_05
1:100



APT_2B_07
1:100



APT_2B_06
1:100

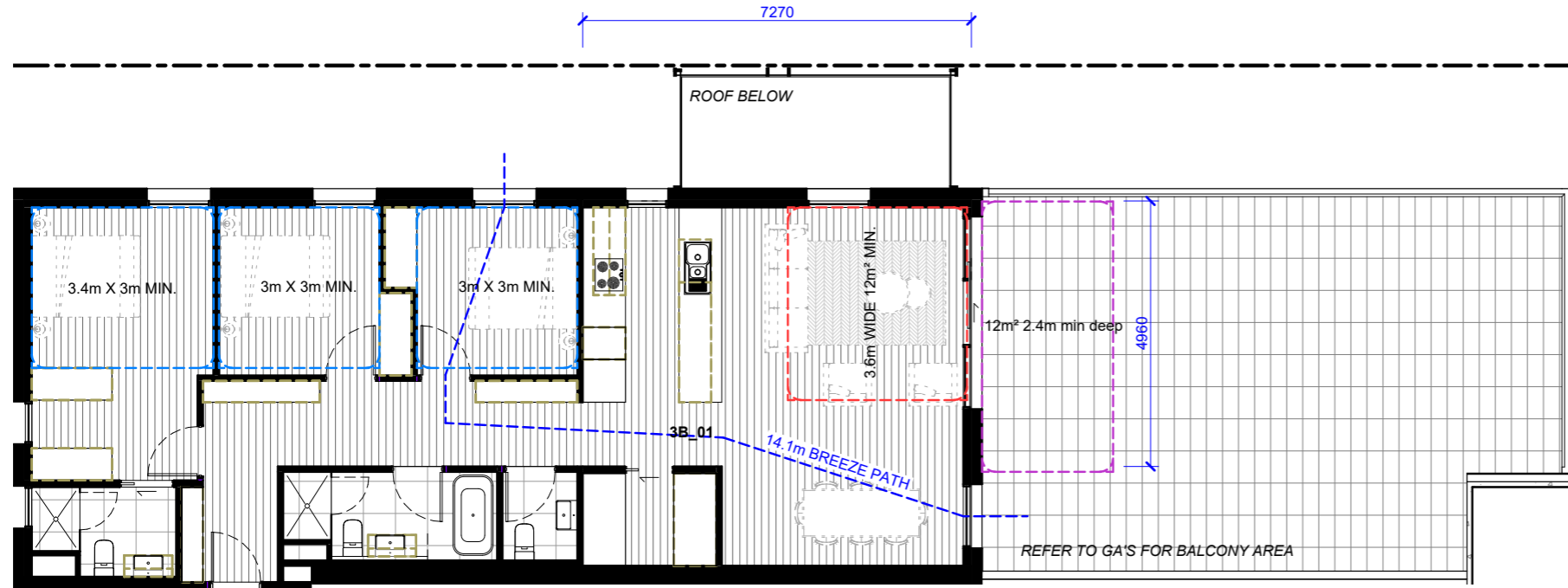


CITY OF BALLARAT

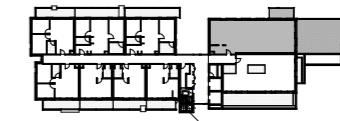
This document has been copied and made available for the purpose of the planning process as set out in the Planning and Environment Act 1987. The information must not be used for any other purpose. By taking a copy of this document you acknowledge and agree that you will only use the document for the purpose specified above and that any dissemination, distribution or copying of this document is strictly prohibited.



6.6 Apartment Typologies



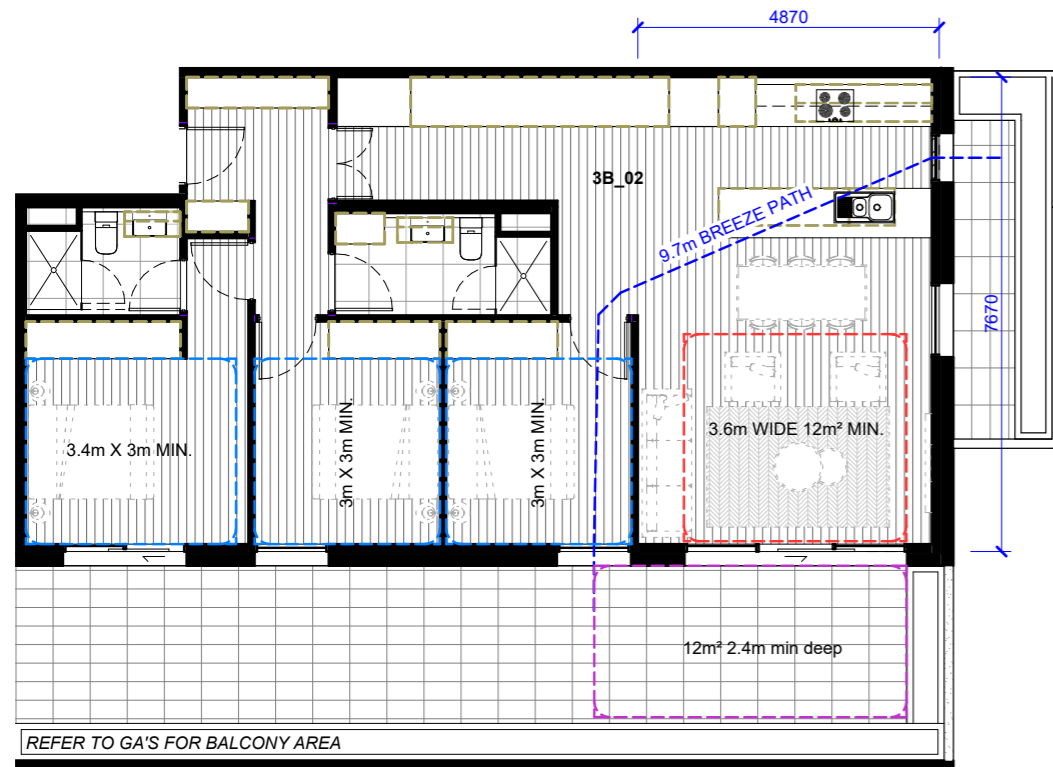
APT_3B_01
1 : 100



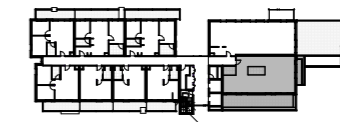
LEVEL 7



This document has been copied and made available for the purpose of the planning process as set out in the Planning and Environment Act 1987. The information must not be used for any other purpose. By taking a copy of this document you acknowledge and agree that you will only use the document for the purpose specified above and that any dissemination, distribution or copying of this document is strictly prohibited.



APT_3B_02
1 : 100



LEVEL 7



6.6 BADS Compliance Table

BADS COMPLIANCE												
LEVEL	UNIT NUMBER	TYPE	Internal Storage	External Storage	BADS ACC	POS	Living	Bedroom Main	Bedroom Secondary	Room Depth	Windows	Ventilation
			124.9 m³									
LEVEL 1	N.1.01	2B_02	14.0 m³	0.0 m³	NA	YES	YES	YES	YES	YES	YES	YES
LEVEL 1	N.1.02	2B_02	14.0 m³	0.0 m³	NA	YES	YES	YES	YES	YES	YES	NA
LEVEL 1	N.1.03	2B_03	14.0 m³	0.0 m³	NA	YES	YES	YES	YES	YES	YES	YES
LEVEL 1	N.1.04	2B_04	11.0 m³	3.0 m³	YES	YES	YES	YES	YES	YES	YES	YES
LEVEL 1	N.1.05	1B_02	8.6 m³	2.0 m³	YES	YES	YES	YES	NA	YES	YES	NA
LEVEL 2	N.2.01	2B_01	14.0 m³	0.0 m³	NA	YES	YES	YES	YES	YES	YES	YES
LEVEL 2	N.2.02	2B_02	14.0 m³	0.0 m³	NA	YES	YES	YES	YES	YES	YES	NA
LEVEL 2	N.2.03	2B_03	14.0 m³	0.0 m³	NA	YES	YES	YES	YES	YES	YES	YES
LEVEL 2	N.2.04	2B_04	11.0 m³	3.0 m³	YES	YES	YES	YES	YES	YES	YES	YES
LEVEL 2	N.2.05	1B_01	11.5 m³	0.0 m³	NA	YES	YES	YES	NA	YES	YES	NA
LEVEL 2	S.2.06	1B_02	7.7 m³	2.5 m³	YES	YES	YES	YES	NA	YES	YES	NA
LEVEL 2	S.2.07	1B_02	7.7 m³	2.5 m³	YES	YES	YES	YES	NA	YES	YES	NA
LEVEL 2	S.2.08	1B_02	7.7 m³	2.5 m³	YES	YES	YES	YES	NA	YES	YES	NA
LEVEL 2	S.2.09	2B_05	11.8 m³	2.5 m³	YES	YES	YES	YES	YES	YES	YES	YES
LEVEL 2	S.2.10	2B_07	11.7 m³	2.5 m³	YES	YES	YES	YES	YES	YES	YES	YES
LEVEL 2	S.2.11	2B_06	11.5 m³	2.5 m³	NA	YES	YES	YES	YES	YES	YES	NA
LEVEL 2	S.2.12	2B_06	11.5 m³	2.5 m³	NA	YES	YES	YES	YES	YES	YES	YES
LEVEL 3	N.3.01	2B_01	14.0 m³	0.0 m³	NA	YES	YES	YES	YES	YES	YES	YES
LEVEL 3	N.3.02	2B_02	14.0 m³	0.0 m³	NA	YES	YES	YES	YES	YES	YES	NA
LEVEL 3	N.3.03	2B_03	14.4 m³	0.0 m³	NA	YES	YES	YES	YES	YES	YES	YES
LEVEL 3	N.3.04	2B_04	11.0 m³	3.0 m³	YES	YES	YES	YES	YES	YES	YES	YES
LEVEL 3	N.3.05	1B_01	11.5 m³	0.0 m³	NA	YES	YES	YES	NA	YES	YES	NA
LEVEL 3	S.3.06	1B_02	7.7 m³	2.5 m³	YES	YES	YES	YES	NA	YES	YES	NA
LEVEL 3	S.3.07	1B_02	7.7 m³	2.5 m³	YES	YES	YES	YES	NA	YES	YES	NA
LEVEL 3	S.3.08	1B_02	7.7 m³	2.5 m³	YES	YES	YES	YES	NA	YES	YES	NA
LEVEL 3	S.3.09	2B_05	11.8 m³	2.5 m³	YES	YES	YES	YES	YES	YES	YES	YES
LEVEL 3	S.3.10	2B_07	11.7 m³	2.5 m³	YES	YES	YES	YES	YES	YES	YES	YES
LEVEL 3	S.3.11	2B_06	11.5 m³	2.5 m³	NA	YES	YES	YES	YES	YES	YES	NA
LEVEL 3	S.3.12	2B_06	11.5 m³	2.5 m³	NA	YES	YES	YES	YES	YES	YES	YES
LEVEL 4	N.4.01	2B_01	14.0 m³	0.0 m³	NA	YES	YES	YES	YES	YES	YES	YES
LEVEL 4	N.4.02	2B_02	14.0 m³	0.0 m³	NA	YES	YES	YES	YES	YES	YES	NA
LEVEL 4	N.4.03	2B_03	14.0 m³	0.0 m³	NA	YES	YES	YES	YES	YES	YES	YES
LEVEL 4	N.4.04	2B_04	11.0 m³	3.0 m³	YES	YES	YES	YES	YES	YES	YES	YES
LEVEL 4	N.4.05	1B_01	11.5 m³	0.0 m³	NA	YES	YES	YES	NA	YES	YES	NA
LEVEL 4	S.4.06	1B_02	7.7 m³	2.5 m³	YES	YES	YES	YES	NA	YES	YES	NA
LEVEL 4	S.4.07	1B_02	7.7 m³	2.5 m³	YES	YES	YES	YES	NA	YES	YES	NA
LEVEL 4	S.4.08	1B_02	7.7 m³	2.5 m³	YES	YES	YES	YES	NA	YES	YES	NA
LEVEL 4	S.4.09	2B_05	11.8 m³	2.5 m³	YES	YES	YES	YES	YES	YES	YES	YES
LEVEL 4	S.4.10	2B_07	11.7 m³	2.5 m³	YES	YES	YES	YES	YES	YES	YES	YES
LEVEL 4	S.4.11	2B_06	11.5 m³	2.5 m³	NA	YES	YES	YES	YES	YES	YES	NA
LEVEL 4	S.4.12	2B_06	11.5 m³	2.5 m³	NA	YES	YES	YES	YES	YES	YES	YES
LEVEL 5	N.5.01	2B_01	14.0 m³	0.0 m³	NA	YES	YES	YES	YES	YES	YES	YES
LEVEL 5	N.5.02	2B_02	14.0 m³	0.0 m³	NA	YES	YES	YES	YES	YES	YES	NA
LEVEL 5	N.5.03	2B_03	14.0 m³	0.0 m³	NA	YES	YES	YES	YES	YES	YES	YES
LEVEL 5	N.5.04	2B_04	11.0 m³	3.0 m³	YES	YES	YES	YES	YES	YES	YES	YES
LEVEL 5	N.5.05	1B_01	11.5 m³	0.0 m³	NA	YES	YES	YES	NA	YES	YES	NA
LEVEL 5	S.5.06	1B_02	7.7 m³	2.5 m³	YES	YES	YES	YES	NA	YES	YES	NA
LEVEL 5	S.5.07	1B_02	7.7 m³	2.5 m³	YES	YES	YES	YES	NA	YES	YES	NA
LEVEL 5	S.5.08	1B_02	7.7 m³	2.5 m³	YES	YES	YES	YES	NA	YES	YES	NA
LEVEL 5	S.5.09	2B_05	11.8 m³	2.5 m³	YES	YES	YES	YES	YES	YES	YES	YES
LEVEL 5	S.5.10	2B_07	11.7 m³	2.5 m³	YES	YES	YES	YES	YES	YES	YES	YES
LEVEL 5	S.5.11	2B_06	11.5 m³	2.5 m³	NA	YES	YES	YES	YES	YES	YES	NA
LEVEL 5	S.5.12	2B_06	11.5 m³	2.5 m³	NA	YES	YES	YES	YES	YES	YES	YES
LEVEL 6	N.6.01	2B_01	14.0 m³	0.0 m³	NA	YES	YES	YES	YES	YES	YES	YES
LEVEL 6	N.6.02	2B_02	14.0 m³	0.0 m³	NA	YES	YES	YES	YES	YES	YES	NA
LEVEL 6	N.6.03	2B_03	14.0 m³	0.0 m³	NA	YES	YES	YES	YES	YES	YES	YES
LEVEL 6	N.6.04	2B_04	11.0 m³	3.0 m³	YES	YES	YES	YES	YES	YES	YES	YES
LEVEL 6	N.6.05	1B_01	11.5 m³	0.0 m³	NA	YES	YES	YES	NA	YES	YES	NA
LEVEL 6	S.6.06	1B_02	7.7 m³	2.5 m³	YES	YES	YES	YES	NA	YES	YES	NA
LEVEL 6	S.6.07	1B_02	7.7 m³	2.5 m³	YES	YES	YES	YES	NA	YES	YES	NA
LEVEL 6	S.6.08	1B_02	7.7 m³	2.5 m³	YES	YES	YES	YES	NA	YES	YES	NA
LEVEL 6	S.6.09	2B_05	11.8 m³	2.5 m³	YES	YES	YES	YES	YES	YES	YES	YES
LEVEL 6	S.6.10	2B_07	11.7 m³	2.5 m³	YES	YES	YES	YES	YES	YES	YES	YES
LEVEL 6	S.6.11	2B_06	11.5 m³	2.5 m³	NA	YES	YES	YES	YES	YES	YES	NA
LEVEL 6	S.6.12	2B_06	11.5 m³	2.5 m³	NA	YES	YES	YES	YES	YES	YES	YES
LEVEL 7	N.7.01	3B_01	21.8 m³	0.0 m³	NA	YES	YES	YES	YES	YES	YES	YES
LEVEL 7	N.7.02	3B_02	25.8 m³	0.0 m³	NA	YES	YES	YES	YES	YES	YES	YES
LEVEL 7	S.7.03	1B_02	7.7 m³	2.5 m³	YES	YES	YES	YES	NA	YES	YES	NA
LEVEL 7	S.7.04	1B_02	7.7 m³	2.5 m³	YES	YES	YES	YES	NA	YES	YES	NA
LEVEL 7	S.7.05	1B_02	7.7 m³	2.5 m³	YES	YES	YES	YES	NA	YES	YES	NA
LEVEL 7	S.7.06	2B_05	11.8 m³	2.5 m³	YES	YES	YES	YES	YES	YES	YES	YES
LEVEL 7	S.7.07	2B_07	11.7 m³	2.5 m³	YES	YES	YES	YES	YES	YES	YES	YES
LEVEL 7	S.7.08	2B_06	11.5 m³	2.5 m³	NA	YES	YES	YES	YES	YES	YES	NA
LEVEL 7	S.7.09	2B_06	11.5 m³	2.5 m³	NA	YES	YES	YES	YES	YES	YES	YES
			975.0 m³									



This document has been copied and made available for the purpose of the planning process as set out in the Planning and Environment Act 1987. The information must not be used for any other purpose. By taking a copy of this document you acknowledge and agree that you will only use the document for the purpose specified above and that any dissemination, distribution or copying of this document is strictly prohibited.