



Imaged Document Cover Sheet

The document following this cover sheet is an imaged document supplied by LANDATA®, Secure Electronic Registries Victoria.

Document Type	Cancelled Title
Document Identification	2734/734
Number of Pages (excluding this cover sheet)	8
Document Assembled	18/06/2024 15:02

Copyright and disclaimer notice:

© State of Victoria. This publication is copyright and includes confidential information. No part may be reproduced by any process except in accordance with the provisions of the Copyright Act or pursuant to a written agreement. The State of Victoria does not warrant the accuracy or completeness of the information in this publication and any person using or relying upon such information does so on the basis that the State of Victoria shall bear no responsibility or liability whatsoever for any errors, faults, defects or omissions in the information.

The document is invalid if this cover sheet is removed or altered.

CANCELLED
Entered in the Register Book

Vol. 2734 Fol. 546734



VICTORIA.

Certificate of Title,

UNDER THE "TRANSFER OF LAND ACT 1890."

rd
 ✓ The Mutual Assurance Society of Victoria Limited
 Collins Street Melbourne is
 now the proprietor of an Estate in Fee-simple, subject to the Encumbrances
 notified hereunder in All those pieces of Land, delineated and colored
 red on the Map in the margin annexed hereto containing One
 thousand six hundred and fifty acres two rods and eleven
 perches or thereabouts being Crown Sections 5 and 6
 Crown Allotment 11^A and parts of Crown Allotment
 11^B parish of Warrandyte County of Evelyn

Dated the Twenty seventh day of July One thousand eight
hundred and ninety nine

W. Andrews

Assistant Registrar of Titles.

ENCUMBRANCES REFERRED TO



T02734-734-1-1

ORIGINAL CERTIFICATE.
Not to be dealt with outside the Titles Office.

Delivered on-line by LANDATA®
This document provides an image of a cancelled copy of the Register. It is not a statement from the Register of Assisting Information in relation to the land to which it refers.
WARNING

7033
233

Vol. 2594 Fol. 514725

Transfer 409999

Application

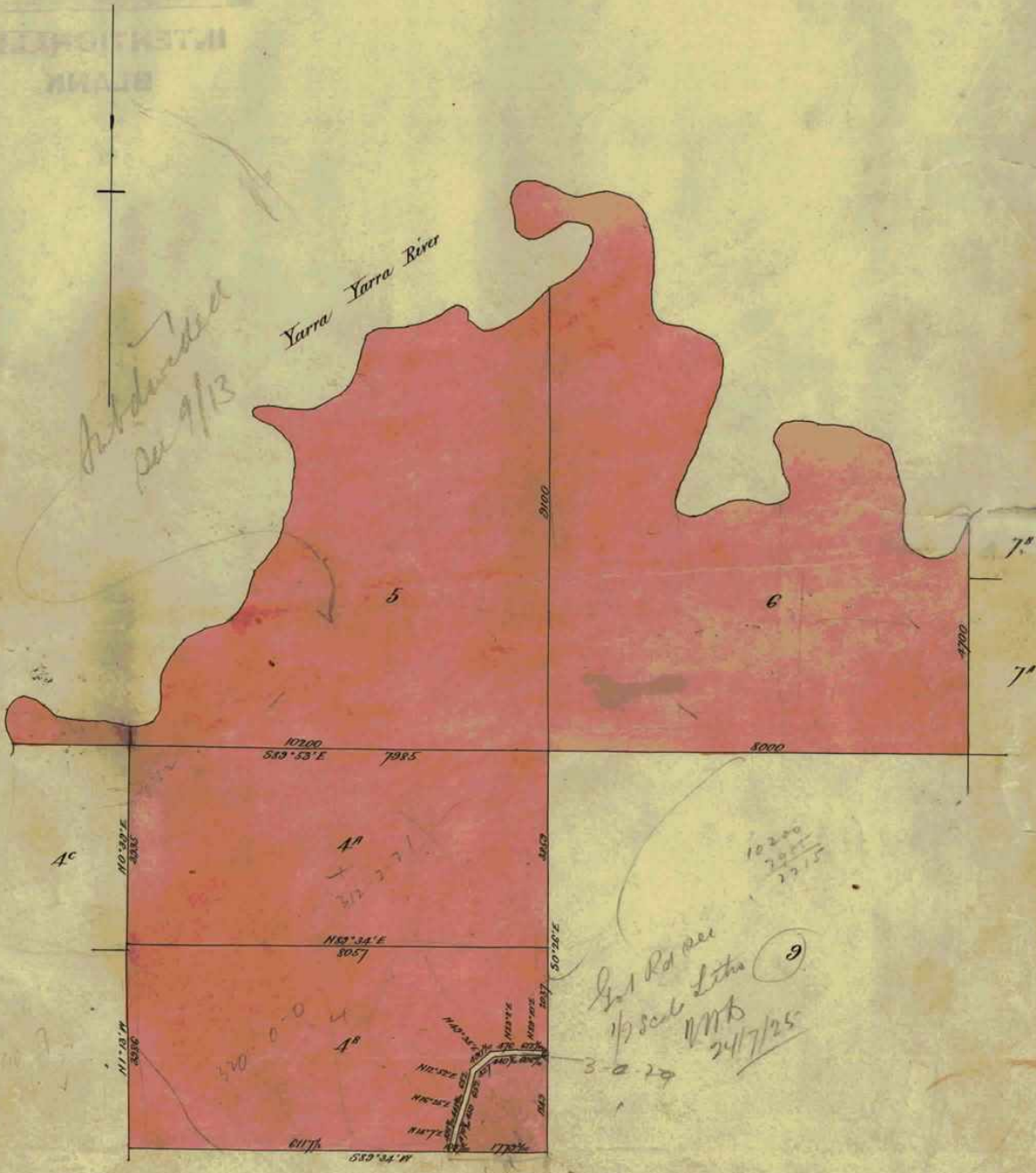
Nature of Instrument.	Day and Hour of its Production.	Names of the Parties to it.	Number or Symbol thereon.
<p>Transfer as to part</p> <p>CANCELLED as to the LAND in CERTIFICATE OF TITLE VOL. 3594 FOL. 718684</p> <p><i>M. Byrne</i> Assistant Registrar of Titles</p>	<p>The 25th April 1912 at 3.45 pm</p>	<p>The Mutual Assurance Society of Victoria Limited to <i>James Begley</i> <i>M. Byrne</i> Assistant Registrar of Titles.</p>	<p>682020</p>
<p>CANCELLED as to PART See Certificate of Title Vol. 4052 Fol. 810373 and R. No. 1824546</p> <p><i>M. Byrne</i> Assistant Registrar of Titles.</p>	<p><i>M. Byrne</i> Assistant Registrar of Titles.</p>	<p><i>M. Byrne</i> Assistant Registrar of Titles.</p>	
<p>CAVEAT NO. 65881 LODGED 25th August 1924 Affecting part of the land herein</p> <p>CAVEAT NO. 65881 LAPSED 1st August 1930</p>		<p><i>M. Byrne</i> Assistant Registrar of Titles.</p>	
<p>Transfer as to part to <i>John Ramsay the elder</i> registered on 5th May 1925 and numbered 1142851</p> <p>CANCELLED as to part See Certificate of Title Vol. 5019 Fol. 1003692</p> <p><i>J. M. Rae</i> Assistant Registrar of Titles.</p>		<p><i>J. M. Rae</i> Assistant Registrar of Titles.</p>	
<p>CANCELLED See Certificate of Title Vol. 5674 Fol. 1134716 Red Ink No. 3051288</p> <p><i>J. M. Rae</i> Assistant Registrar of Titles.</p> <p>CANCELLED</p>		<p><i>J. M. Rae</i> Assistant Registrar of Titles.</p>	

Delivered on-line by LANDATA®. This document provides an image of a scanned copy of the Register. It is not a statement from the register or substitute attachment in relation to the land to which it refers.

WARNING

This is the Annexed Sheet referred to in Certificate of Title entered in the Register Book, Vol. 2734 Fol. 54673.

W. R. Andrew
Assistant Registrar of Titles.



Subdivided per 9/13

Yarra Yarra River

A^C

A^A

A^B

(9)

Sub Rd over 1/2 sec Litho (9) VMB 24/7/25


0.39 / 10 91

The measurements are in links



Delivered on-line by LANDATA®
This document provides an image of a cancelled folio of the Register. It is not a statement from the register of subsisting information in relation to the land to which it refers.
WARNING

This is the intended recipient of this document. If you are not the intended recipient, please do not disseminate, distribute or copy this document. If you have received this document in error, please notify the sender immediately by e-mail at landata@landata.com. If you are not the intended recipient, please do not disseminate, distribute or copy this document. If you have received this document in error, please notify the sender immediately by e-mail at landata@landata.com.

 Natural Resources and Environment
AGRICULTURE • RESOURCES • CONSERVATION • LAND • POLICY • INF

**INTENTIONALLY
BLANK**

Delivered
on-line by
LANDATA®

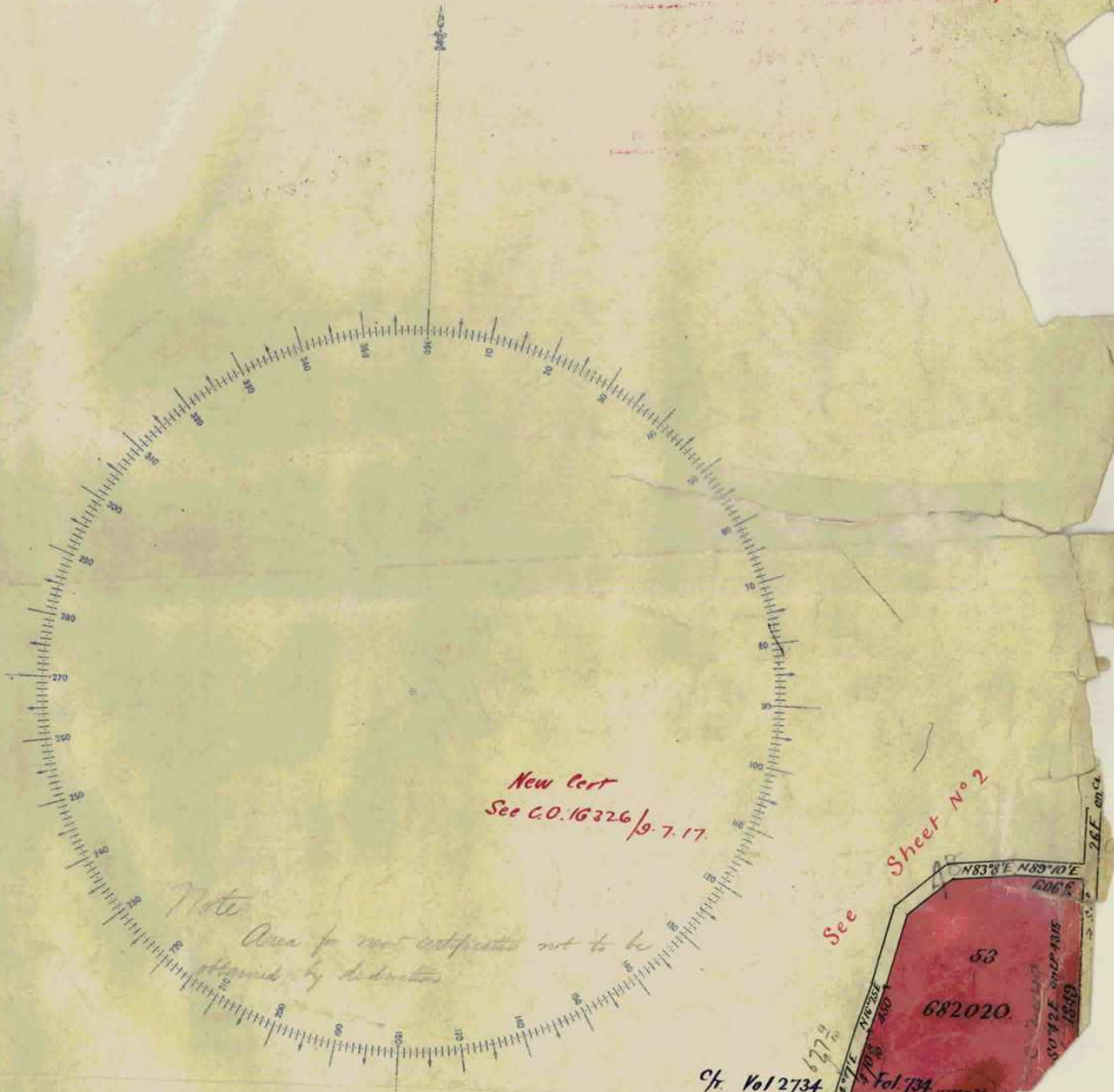
WARNING
This document provides an image of a cancelled leaf of the Register. It is not a statement
from the register or substituting information in relation to the land to which it refers.

Titles Office Record of Subdivision

SCALE

to one inch

Register Book Vol. 2734 fol. 546, 734.



New Cert
See G.O. 16326/9-7-17.

Note
Area of road cuttings not to be
afforded by dedication

See Sheet No 2

N83°E N89°10'E
606'6"

53
682020

cf. Vol 2734
Vol 734
Vol 2734 1832 Fol
889° 34'

12 54

1/2 easement granted in c/o 506558. appurtenant to whole of land
in this c/o. vide sketch attached to c/o 2687/232



Sheet 1
Sheet 2 attached

Delivered on-line by LANDATA®

WARNING

This document provides an image of a cancelled folio of the Register. It is not a statement from the register of subdividing information in relation to the land to which it refers.

Natural Resources and Environment
ADVICE • RECOMMENDATIONS • MANAGEMENT

**INTENTIONALLY
BLANK**

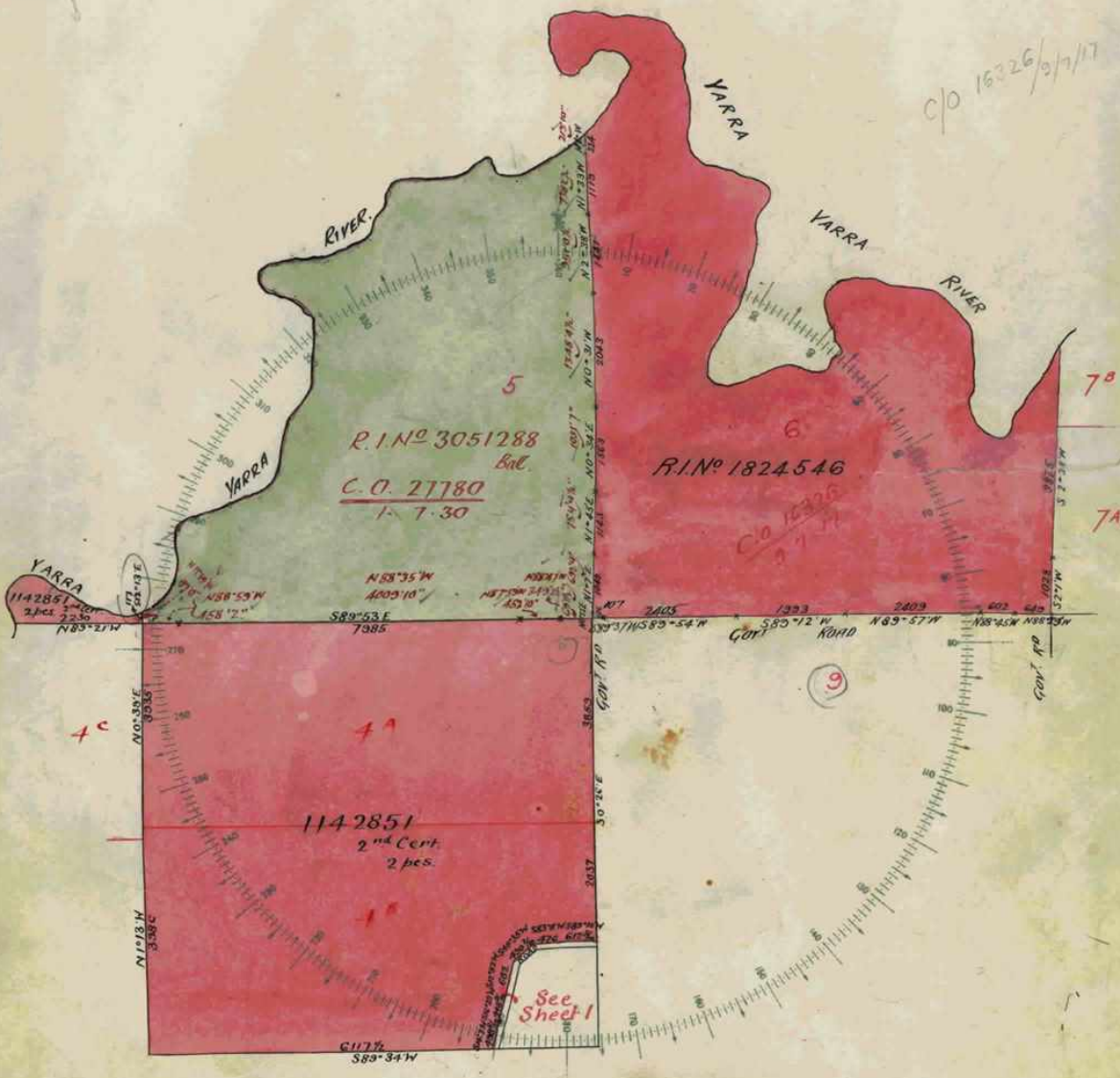
Delivered
on-line by
LANDATA®

WARNING
This document provides an image of a cancelled page of the Register. It is not a statement
from the register or substituting information in relation to the land to which it refers.

SCALE 200' to one

Vol. 2734 of 734

132



Delivered on-line by LANDATA®

WARNING
This document provides a range of a conceded fact of the Register. It is not a statement from the register of subsisting information in relation to the land to which it refers.

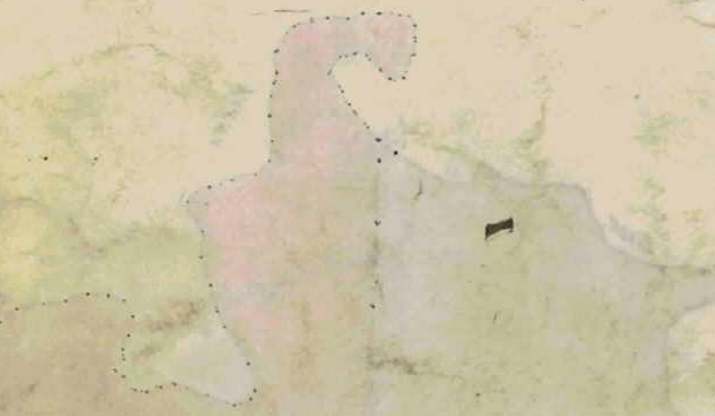


Sheet No 2

1162

Natural Resources and Environment
AGRICULTURE • FISHERIES • FORESTRY • MINING • OIL AND GAS • WILDLIFE

**INTENTIONALLY
BLANK**



Delivered on-line by LANDATA®
This document provides an image of a scanned paper or film negative. It is not a statement from the register of subsisting information in relation to the land to which it refers.
WARNING