



# Imaged Document Cover Sheet

The document following this cover sheet is an imaged document supplied by LANDATA®, Secure Electronic Registries Victoria.

Document Type	<b>Cancelled Title</b>
Document Identification	<b>8769/265</b>
Number of Pages (excluding this cover sheet)	<b>14</b>
Document Assembled	<b>07/07/2024 17:45</b>

**Copyright and disclaimer notice:**

© State of Victoria. This publication is copyright and includes confidential information. No part may be reproduced by any process except in accordance with the provisions of the Copyright Act or pursuant to a written agreement. The State of Victoria does not warrant the accuracy or completeness of the information in this publication and any person using or relying upon such information does so on the basis that the State of Victoria shall bear no responsibility or liability whatsoever for any errors, faults, defects or omissions in the information.

The document is invalid if this cover sheet is removed or altered.

**ORIGINAL**

**NOT TO BE TAKEN FROM THE OFFICE OF TITLES**



VICTORIA

**CANCELLED**  
REGISTER BOOK

VOL. 8769 FOL. 265

# Certificate of Title

UNDER THE "TRANSFER OF LAND ACT"

DENYS LYONEL TOLLEMACHE OPPE of Manor Farm Newnham Basingstoke Hants England - Director as to Seventy four equal undivided one hundredth parts or shares - - <sup>(BISSETT-JOHNSON)</sup>  
 HENRY ~~BISSETT-JOHNSON~~ of 22 Collins Street Melbourne Primary Producer as to -  
 Twenty five equal undivided **one hundredth** parts or shares and FRANK ERIC SHIER  
 of 16 Salisbury Street Balwyn Director as to One equal undivided one - - - -  
 hundredth part or share are now proprietors as tenants in common of an estate  
 in fee simple subject to the encumbrances notified hereunder in ALL THAT - - -  
 piece of land delineated and coloured red on the map on the sheet annexed - -  
 hereto containing Four hundred and eighty one acres Three roods Seven perches  
 and five tenths of a perch or thereabouts being part of Crown Section 6 - - -  
 Parish of Warrandyte County of Evelyn Together with a right to use the land  
 coloured yellow on the said map for drainage purposes - - - - -

Amended  
984777  
2-11-1977

Delivered on-line by LANDATA®

WARNING  
This document provides an image of a cancelled folio of the Register. It is not a statement from the register of subsisting information in relation to the land to which it refers.

DATED the 18th day of October 1968

*W. Higgins*  
Assistant Registrar of Titles



**ENCUMBRANCES REFERRED TO**

PLAN 124608 / 124012  
AFFECTS LAND HEREIN

PLAN 132574 (WITHDRAWN)  
AFFECTS LAND HEREIN

PLAN 135329 (WITHDRAWN)  
AFFECTS LAND HEREIN

THE WHOLE OR PART OF THE WITHIN LAND HAS BEEN SUBDIVIDED SEE

Unregistered Plan  
Misc. Plan  
L.P. 9132

PROPOSED 2 LOT NON-SURVEY 1/5 (10 AC AT N. END OF GARDIA DRIVE)  
UNACCEPTABLE AT PRESENT.  
RE-CONSIDER AFTER M.M.B.W. RESERVE (GARDIA ASSOCIATION)  
PEGGED AND TRANSFERRED  
7/11/77

MEASUREMENTS ARE IN

Derived from Vol.5674 Fol.717  
D22028

VOL. 8769 FOL. 265

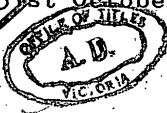
VOL. FOL. INSTRUMENT APPLICATION

**MORTGAGE** to MARY ELIZABETH DOWAGER  
BARONESS OF FIFE  
Registered 18th October 1968  
No. D220229



**MORTGAGE** to COMMONWEALTH  
DEVELOPMENT BANK OF AUSTRALIA  
Registered 31st October 1968  
No. D230798

**DISCHARGED**  
AUG 3/76



Minister of Lands 10/1/92  
has pursuant to section 57 of Transfer of Land Act  
served a Notification relating to the compulsory acquisition  
of land comprised herein.  
Dated 23 NOV 1981  
Entered - 8 DEC 1982  
No. J724768



(Plan with letter)

**CANCELLED AS TO PART**  
Pursuant to Regulation 13 and Title  
issued as set out hereunder on 16th December  
1970

Lots ONE to 7 in Vol 8860 Fol 448  
to Vol 8860 Fol 454  
L.P. 89132



TRANSFER AS TO PART No. J332456  
registered 6th February 1981

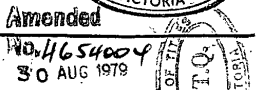
**CANCELLED AS TO PART**  
See Vol. 9495 Fol. 148  
Lot 10



**CAVEAT NO. K746527 LODGED 8/2/84**

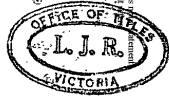
Caveat transferred to new C/T

**DISCHARGED AS TO PART**  
Dated 1979  
No. H501025  
DISCHARGED AS TO PART  
BEING THE NAME IN THE  
TRANSFER NO. 573245  
DATED 6th February 1983



TRANSFER AS TO PART  
to HER MAJESTY QUEEN ELIZABETH II  
Registered: 8th June 1983  
No K409492

**CANCELLED AS TO PART**



STATE ELECTRICITY COMMISSION  
has pursuant to section 57 of Transfer of Land Act  
served a Notification relating to the compulsory acquisition  
of an easement upon land herein.  
Dated 21 AUG 1977  
Entered 25 AUG 1977  
No. G 742562



(Plan with letter)

**CREATION OF EASEMENT**  
Registered 5th April 1979  
No. H472931

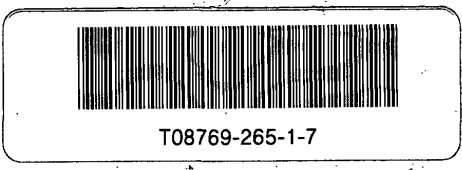


**CANCELLED APPLICATION No.**  
Registered See Vol. 9558 Fol. 669  
and Vol. 9558 Fol. 670

**CANCELLED**

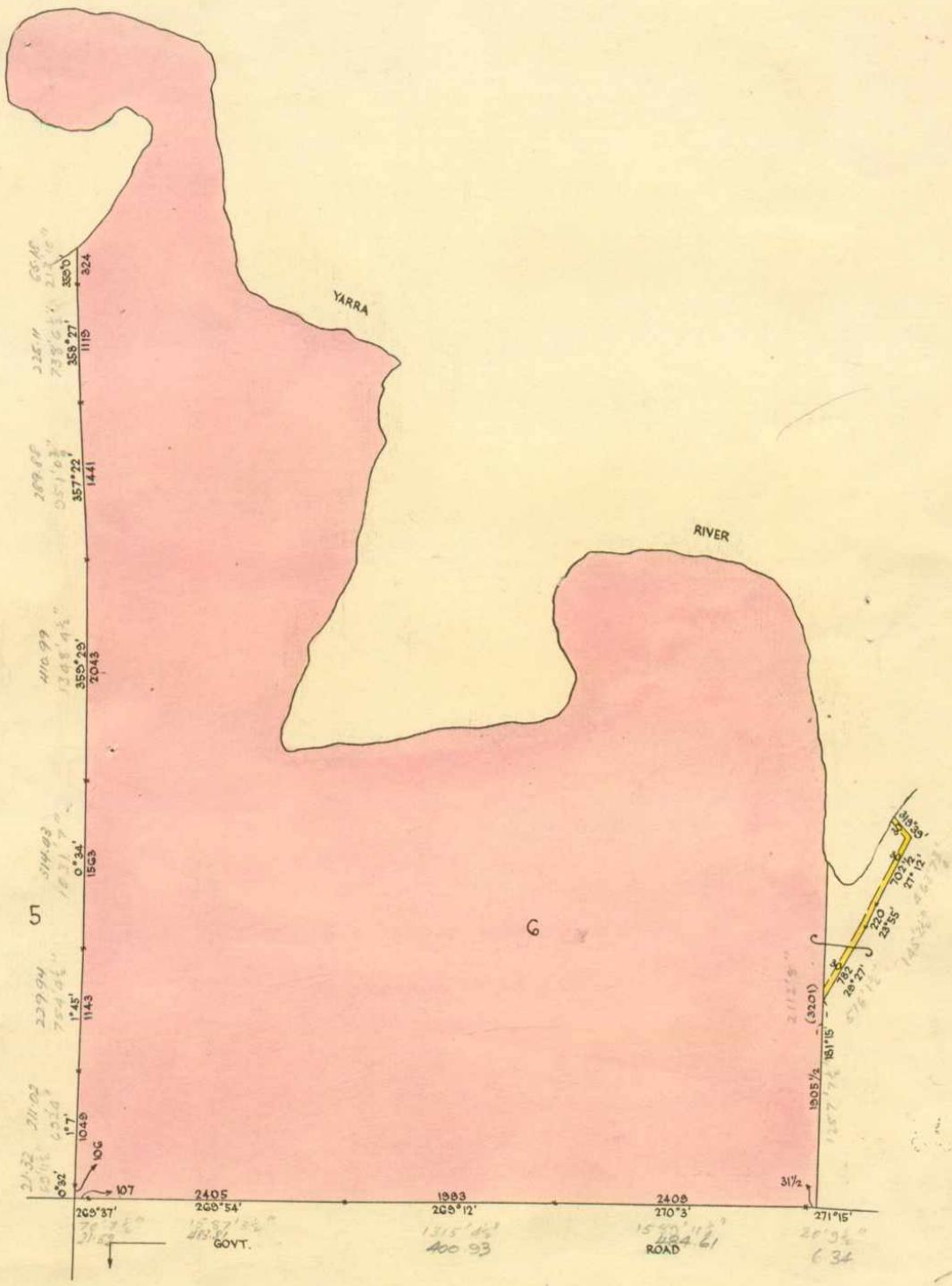


**CAVEAT No. H782640 LODGED 29th Nov. 1979**  
Affecting part of the land herein Lot No. 10.  
**CAVEAT WILL LAPSE ON**  
**REGISTRATION OF J332456 23 DEC 1982**



Delivered on-line by LANDATA®  
The document printed here is a scanned copy of the Register. It is not a legal document and should not be relied upon for legal purposes. For more information visit us at www.landata.com.au

*W. J. Higgins*  
ASSISTANT REGISTRAR OF TITLES



MEASUREMENTS ARE IN LINKS

Delivered on-line by LANDATA®  
WARNING  
This document provides an image of a cancelled folio of the Register. It is not a statement from the register of subsisting information in relation to the land to which it refers.

*de*

**Natural Resources and Environment**  
AGRICULTURE RESOURCES CONSERVATION MANAGEMENT

INVESTIGATIONAL  
BLANK

Produced  
On-line by  
LANDATA®  
The document provides an image of a scanned file of the Register. It is not a statement  
from the register of business information as shown in the form of which it exists.

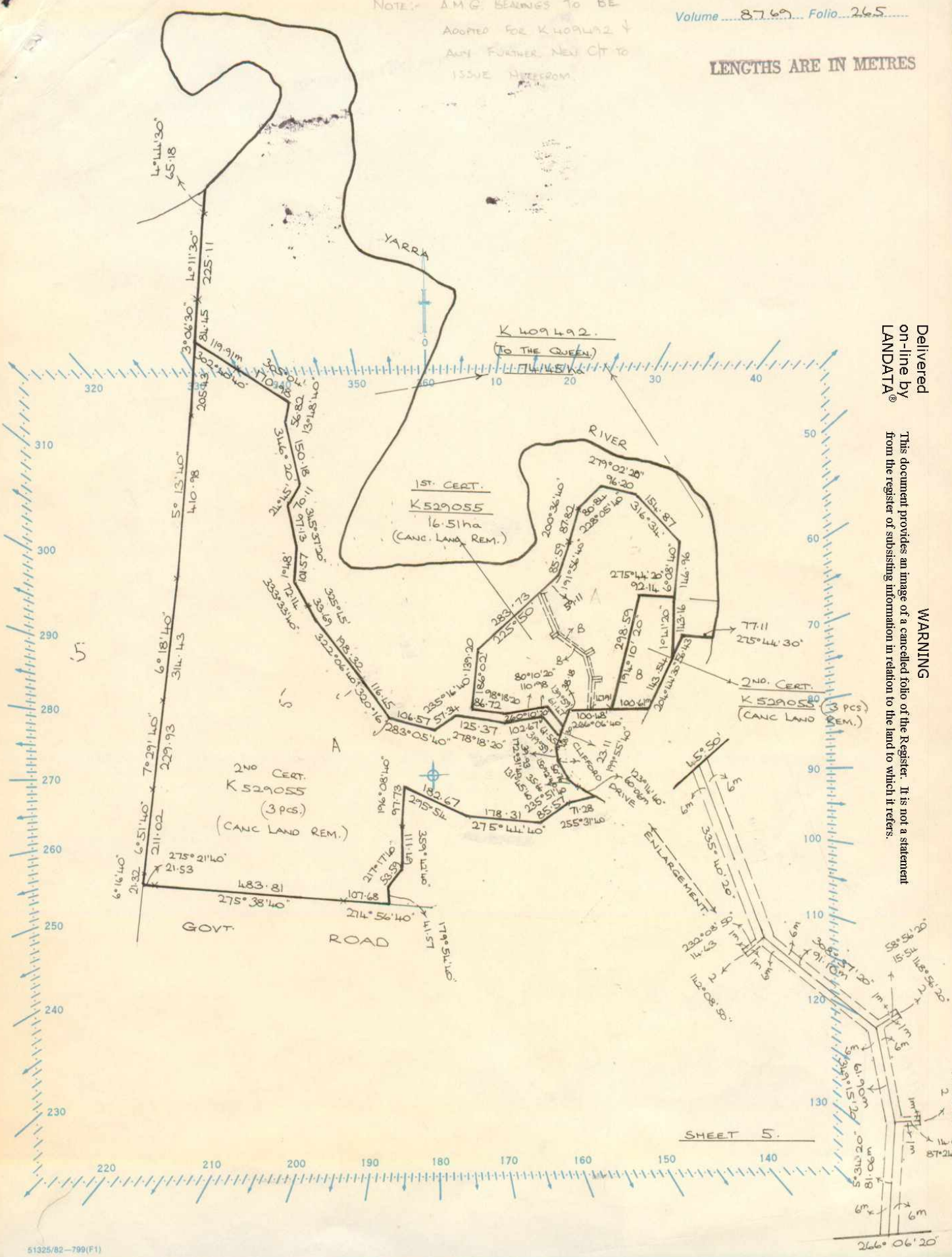


SCALE .....

Volume 8769 Folio 265

NOTE: A.M.G. BEARINGS TO BE  
ADOPTED FOR K 409492 &  
ANY FURTHER NEW CT TO  
ISSUE HEREFROM.

LENGTHS ARE IN METRES



Delivered  
on-line by  
LANDATA®

This document provides an image of a cancelled folio of the Register. It is not a statement  
from the register of subsisting information in relation to the land to which it refers.

WARNING

SHEET 5.

**Natural Resources and Environment**  
AGRICULTURE RESOURCES • CONSERVATION • LAND MANAGEMENT

**INTERNATIONAL**

**ESU**

Delivered  
on-line by  
LANDATA

**WARNING:**  
This document provides an image of a certified color of the Subject. It is not a statement  
from the office of issuing resolution in relation to the map or parcel it covers.



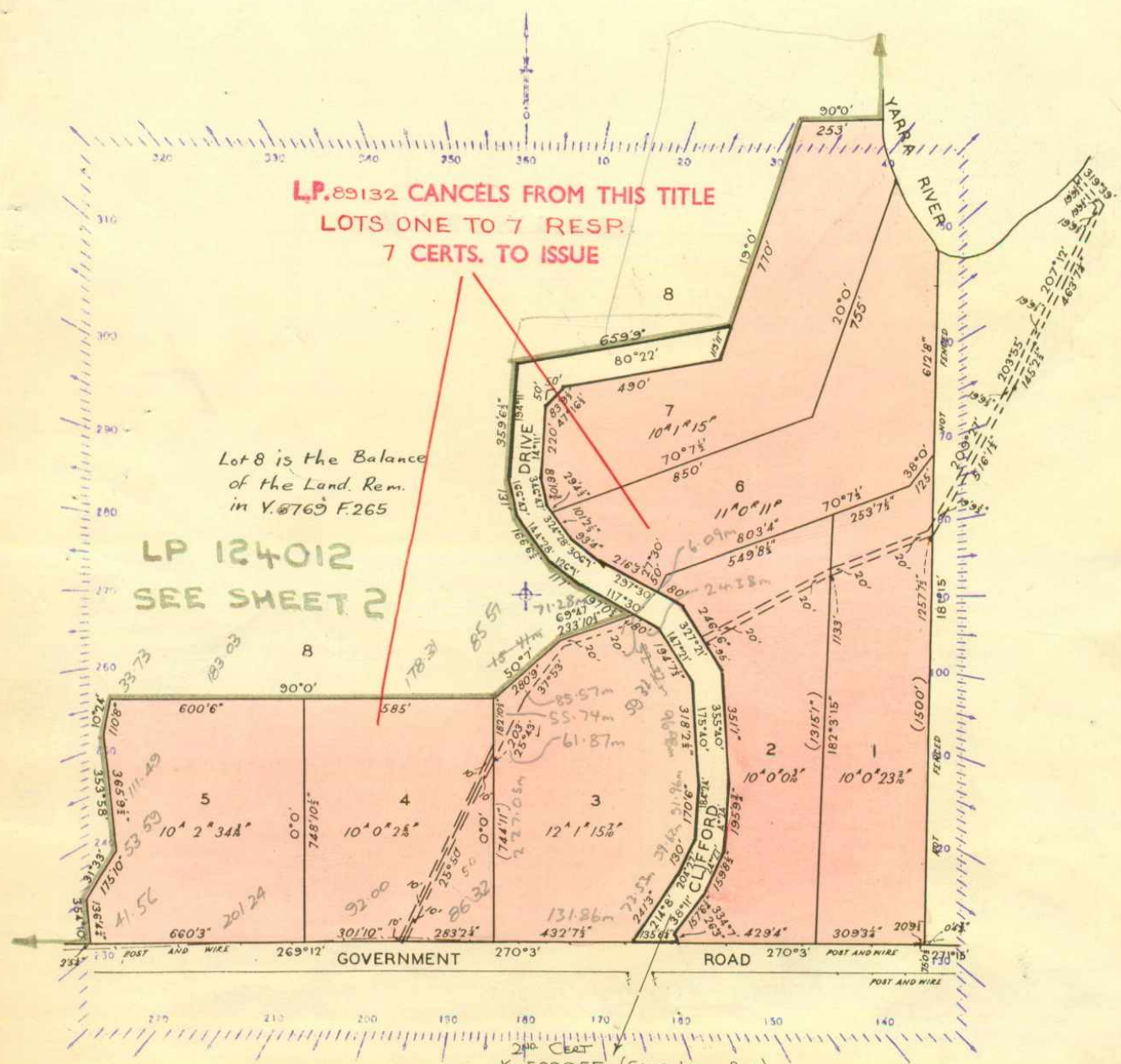
SCALE: ..... to one inch

Volume 8769, Folio 265...

Delivered on-line by LANDATA®

WARNING This document provides an image of a cancelled folio of the Register. It is not a statement from the register of subsisting information in relation to the land to which it refers.

WARNING



**LP.89132 CANCELS FROM THIS TITLE  
LOTS ONE TO 7 RESP.  
7 CERTS. TO ISSUE**

Lot 8 is the Balance  
of the Land Rem.  
in V.6769 F.265

LP 124012  
SEE SHEET 2

2ND CERT  
K.529055 (CANC. LAND REM.)  
(3 pcs.)

SHEET 1

LP. 89132



**Natural Resources and Environment**  
AGRICULTURE • RESOURCES • CONSERVATION • LAND MANAGEMENT

**INTENTIONALLY  
BLANK**

Delivered by  
ONLINE BY  
LANDATA®  
The document provides an image of a scanned folder. Knowledge is not a substitute for professional advice. Please contact your account manager for more information.

WARNING



T08769-265-4-1

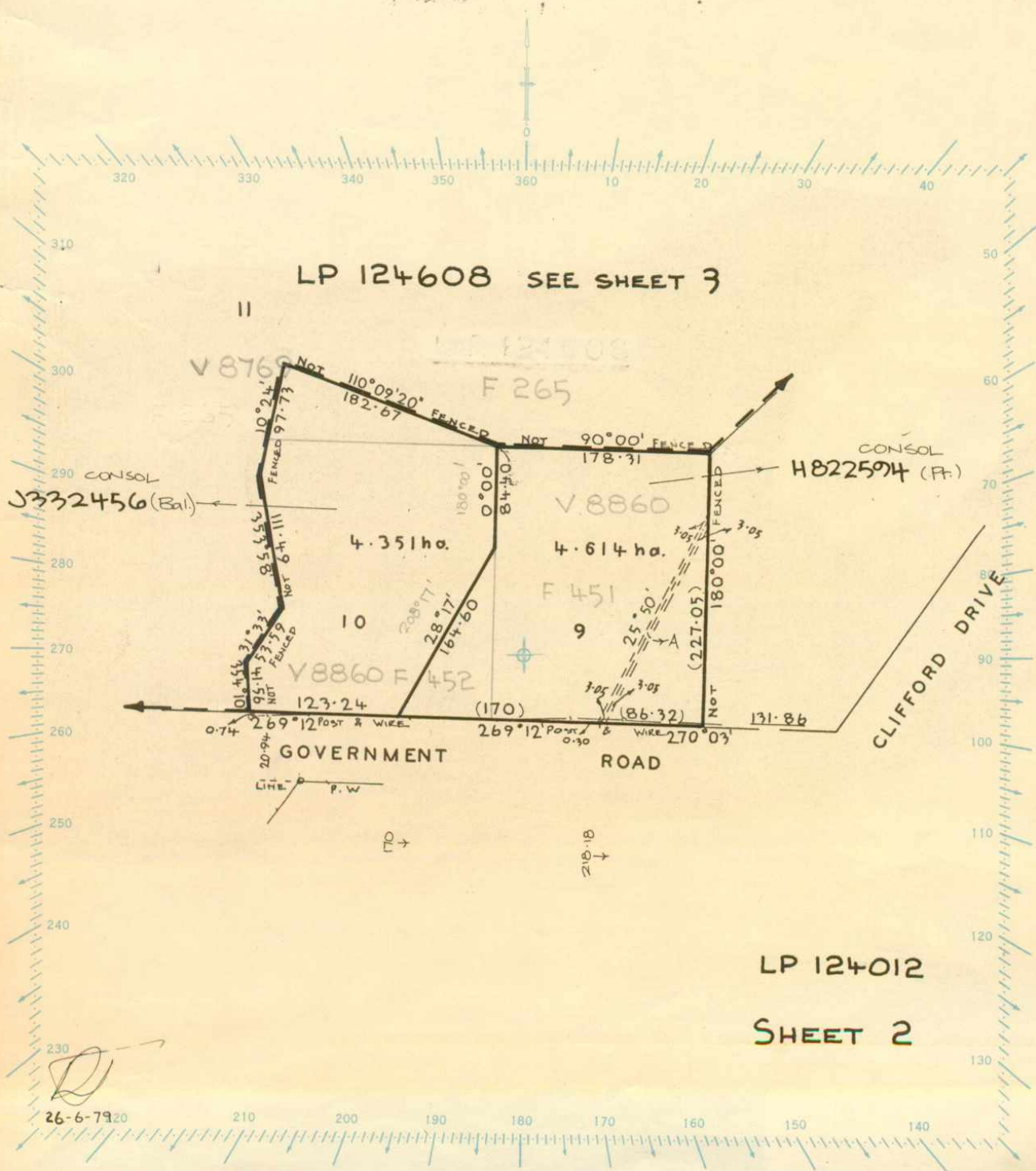
SCALE: \_\_\_\_\_

Volume	8769	Folio	265
	8860		451
	8860		452

LENGTHS ARE IN METRES

Delivered on-line by LANDATA®  
 This document provides an image of a cancelled folio of the Register. It is not a statement from the register of subsisting information in relation to the land to which it refers.

WARNING



LP 124608 SEE SHEET 3

LP 124012

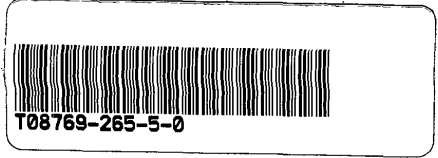
SHEET 2

26-6-79 20

**Natural Resources and Environment**  
AGRICULTURE RESOURCES CONSERVATION LAND MANAGEMENT

**INTERNATIONAL**  
**RELATIONS**

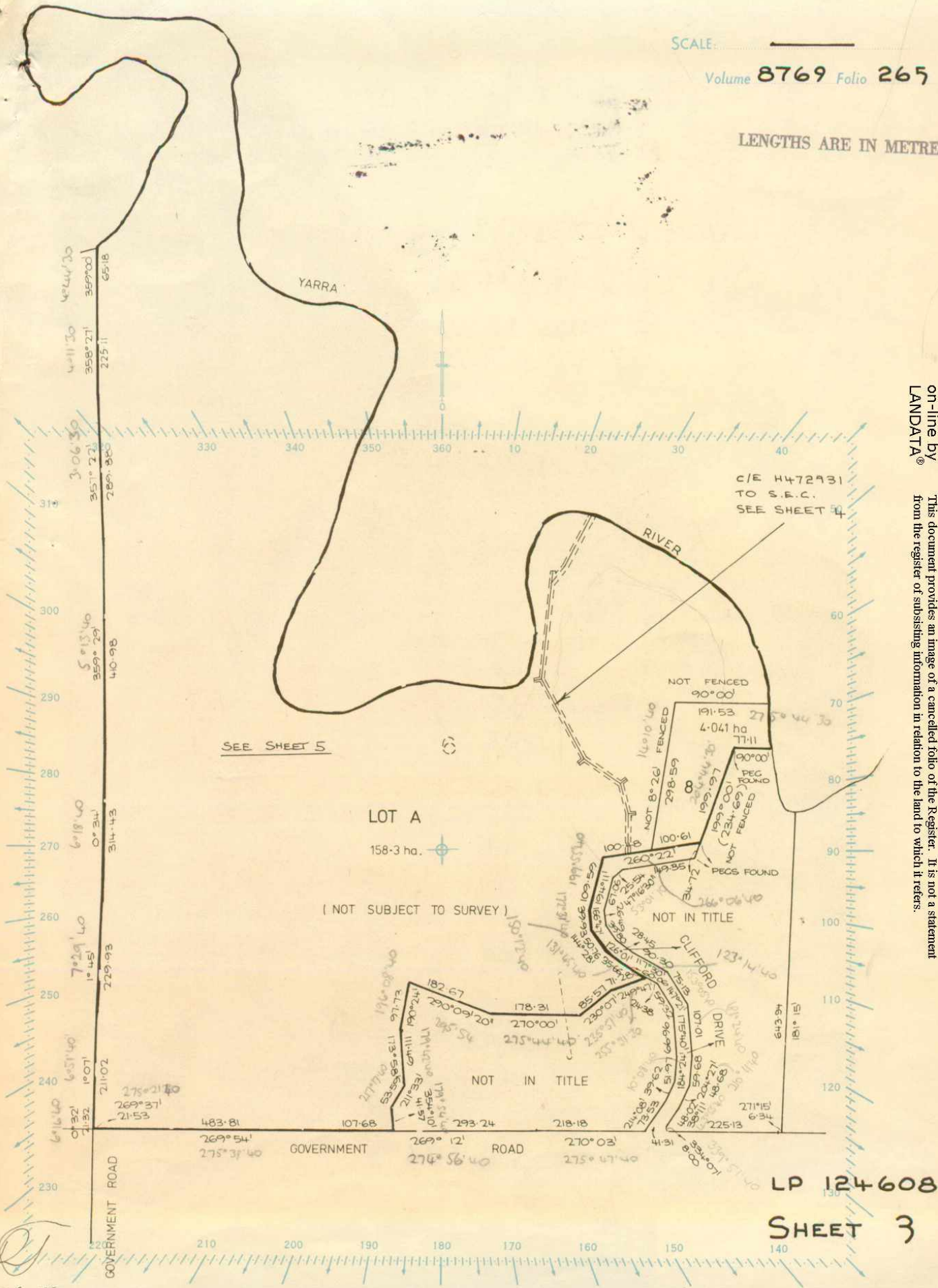
Delivered by LANDATA®  
This document provides an image of a scanned paper document. It is not a PDF document. The document is provided as a scanned image in order to allow a review.



SCALE: \_\_\_\_\_

Volume 8769 Folio 265

LENGTHS ARE IN METRES



Delivered on-line by LANDATA®

WARNING  
This document provides an image of a cancelled folio of the Register. It is not a statement from the register of subsisting information in relation to the land to which it refers.

LP 124608

SHEET 3

26-6-79

**Natural Resources and Environment**  
AGRICULTURE RESOURCES CONSERVATION LAND MANAGEMENT

INTERNATIONAL

BIOMASS

Produced by  
LANDATA  
The information contained in this document is the property of LANDATA and is provided to you under license. It is not to be distributed, copied, or otherwise used without the prior written consent of LANDATA.



T08769-265-6-8

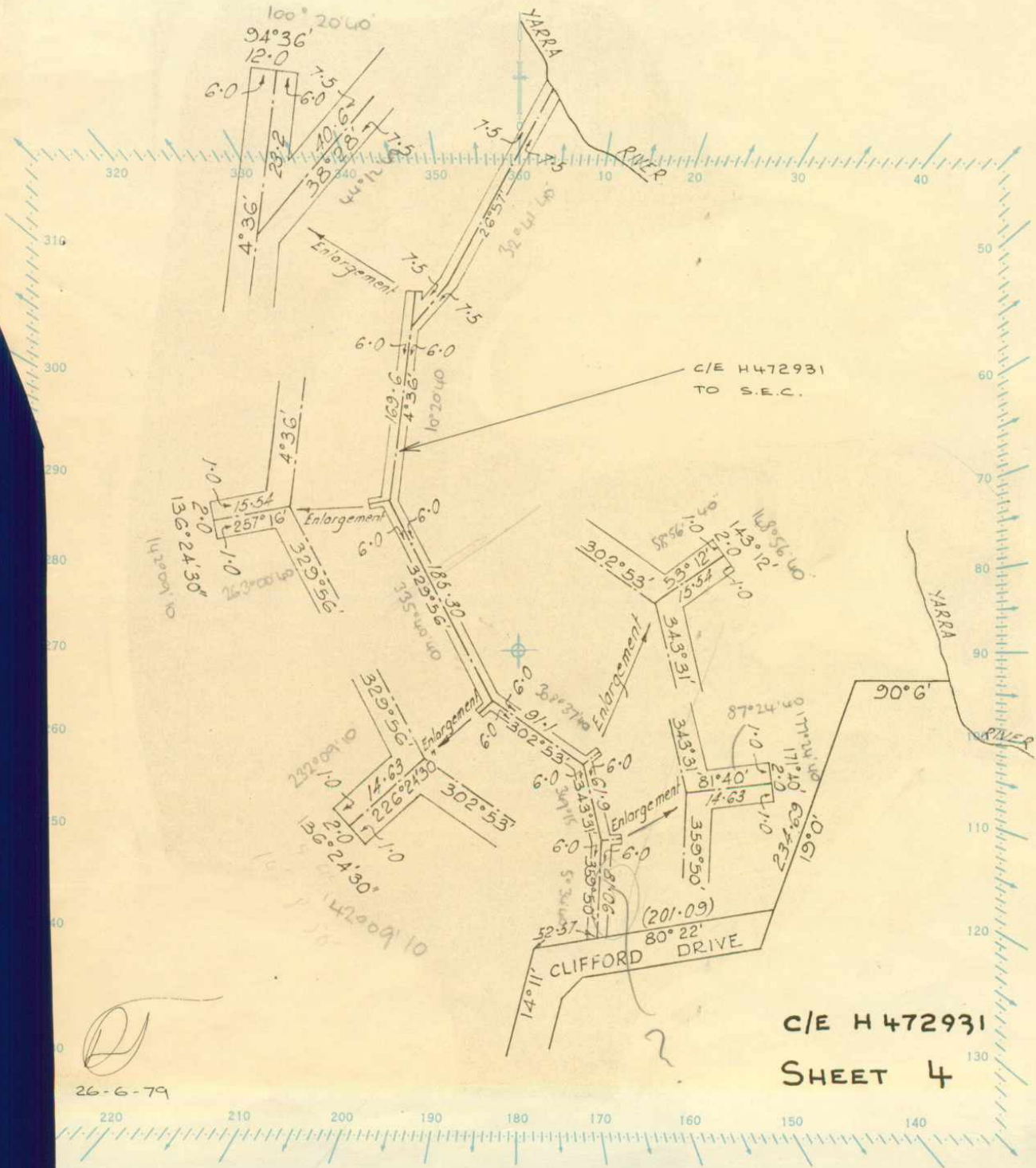
SCALE: \_\_\_\_\_

Volume 8769 Folio 265

LENGTHS ARE IN METRES

Delivered  
on-line by  
LANDATA®

WARNING  
This document provides an image of a cancelled folio of the Register. It is not a statement  
from the register of subsisting information in relation to the land to which it refers.



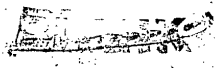
C/E H 472931  
SHEET 4

26-6-79

5-PL

**Natural Resources and Environment**  
AGRICULTURE · RESOURCES · CONSERVATION · LAND MANAGEMENT

STATE OF CALIFORNIA



Delivered on-line by LANDATA®  
WARNING: This document provides an image of a certified data of the Register. It is not a statement from the register of recording information as shown on the land to which it refers.

