



Imaged Document Cover Sheet

The document following this cover sheet is an imaged document supplied by LANDATA®, Secure Electronic Registries Victoria.

Document Type	Cancelled Title
Document Identification	9630/679
Number of Pages (excluding this cover sheet)	4
Document Assembled	07/07/2024 18:22

Copyright and disclaimer notice:

© State of Victoria. This publication is copyright and includes confidential information. No part may be reproduced by any process except in accordance with the provisions of the Copyright Act or pursuant to a written agreement. The State of Victoria does not warrant the accuracy or completeness of the information in this publication and any person using or relying upon such information does so on the basis that the State of Victoria shall bear no responsibility or liability whatsoever for any errors, faults, defects or omissions in the information.

The document is invalid if this cover sheet is removed or altered.

CP. 160244D

CANCELLED

ORIGINAL

NOT TO BE TAKEN FROM THE OFFICE OF TITLES



REGISTER BOOK

VOL. 9630 FOL. 679

Certificate of Title

UNDER THE "TRANSFER OF LAND ACT"

VOL. 9630 FOL. 679

DENYS LYONEL TOLLEMACHE OPPE of Manor Farm Newnham Basingstoke Hants England as to Seventy four equal undivided one hundredth parts or shares HENRY BISSETT-JOHNSON of "Yarra Brae" Wonga Park as to Twenty five equal undivided one hundredth parts or shares and FRANK ERIC SHIER of 16 Salisbury Street Balwyn as to One equal undivided one hundredth part or share are proprietors as TENANTS IN COMMON of an estate in fee simple subject to the encumbrances notified hereunder in all that piece of land in the Parish of Warrandyte County of Evelyn being the land in Plan of - - - - - Consolidation No.160244D which land is shown enclosed by continuous lines on the map on the sheet annexed hereto - - - - -

Issued pursuant to Section 97A (2) of the Transfer of Land Act 1958

DERIVED FROM VOL.8675 FOL.078 VOL.8769 FOL.266 VOL.9558 FOL.670

- 6 SEP 1985

ENCUMBRANCES

As to the land shown marked E-1
THE CARRIAGE WAY AND DRAINAGE EASEMENTS existing over the same by virtue of Section 98 of the Transfer of Land Act see Plan of Subdivision No.89132



P J B...

Assistant Registrar of Titles



T09630-679-1-0

~~THE OF~~ Lot A ~~ON~~
~~PLAN OF SUBDIVISION No. 202136P~~
~~REMAINS IN FORCE~~ ~~CERTIFICATE OF~~
~~TITLE~~ ~~DATED 28-7-1985~~

PLAN LP 202137 M
AFFECTS LAND HEREIN

PLAN LP 202136 P
AFFECTS LAND HEREIN

MEASUREMENTS ARE IN METRES

Delivered on-line by LANDATA®
WARNING
This document provides an image of a cancelled folio of the Register. It is not a statement from the register of subsisting information in relation to the land to which it refers.

VOL.

FOL.

CANCELLED AS TO PART

Pursuant to Regulation 12 and Titles

issued as set out hereunder

on ~~28 FEB 1986~~
Lots ONE to 5 in Vol. 664 Fol. 169
to Vol. 664 Fol. 173

Pursuant to Section 32 of the

Transfer of Land Act Land appropriated or set apart for
CARRIAGE
casements of way drainage and
Sewerage in Vol. 664 Fol. 174

ON LP 202136 P



CANCELLED AS TO BALANCE

The following Titles have been issued

Pursuant to Regulation 10 of the

Transfer of Land Act.

on **30 MAY 1986**
Lots 6 to 13 in Vol. 9684 Fol. 260
in Vol. 9684 Fol. 267

Pursuant to Section 32 of the

Transfer of Land Act being the road -

in Vol. 9684 Fol. 268

on LP 202137M:



CANCELLED

Delivered
on-line by
LANDATA®

WARNING
This document provides an image of a cancelled folio of the Register. It is not a statement
from the register of subsisting information in relation to the land to which it refers.

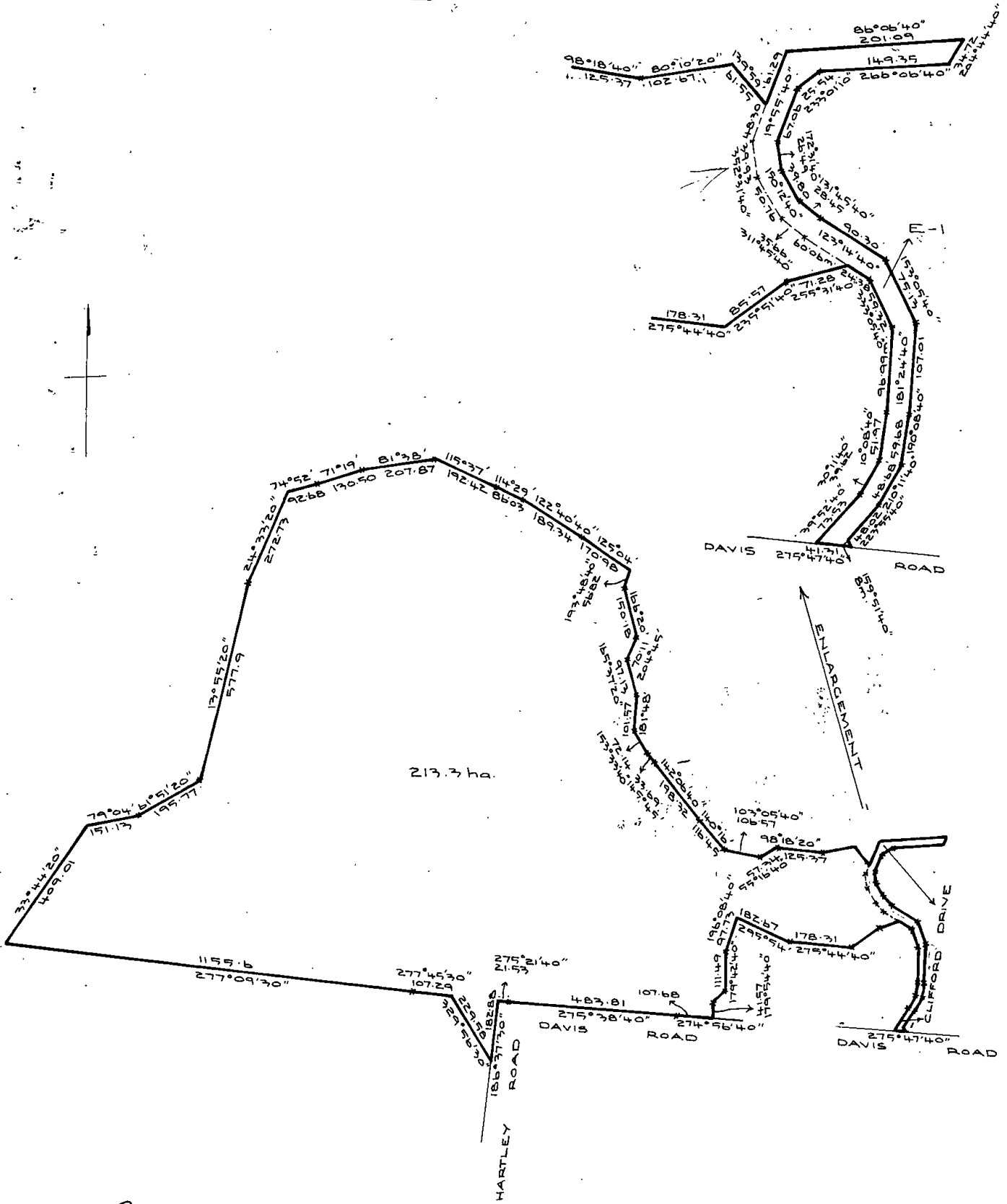
ANNEXED SHEET REFERRED TO IN
CERTIFICATE OF TITLE VOL 9630 FOL. 679

895/20

ASSISTANT REGISTRAR OF TITLES



T09630-679-2-8



Delivered
on-line by
LANDATA®

WARNING
This document provides an image of a cancelled folio of the Register. It is not a statement
from the register or substituting information in relation to the land to which it refers.



Natural Resources and Environment

AGRICULTURE • RESOURCES • CONSERVATION • LAND MANAGEMENT

INTENTIONALLY



BLANK



Delivered
on-line by
LANDATA®

This document provides an image of a cancelled folio of the Register. It is not a statement from the register or subsisting information in relation to the land to which it refers.

WARNING