



Imaged Document Cover Sheet

The document following this cover sheet is an imaged document supplied by LANDATA®, Secure Electronic Registries Victoria.

Document Type	Cancelled Title
Document Identification	2574/725
Number of Pages (excluding this cover sheet)	6
Document Assembled	18/06/2024 14:40

Copyright and disclaimer notice:

© State of Victoria. This publication is copyright and includes confidential information. No part may be reproduced by any process except in accordance with the provisions of the Copyright Act or pursuant to a written agreement. The State of Victoria does not warrant the accuracy or completeness of the information in this publication and any person using or relying upon such information does so on the basis that the State of Victoria shall bear no responsibility or liability whatsoever for any errors, faults, defects or omissions in the information.

The document is invalid if this cover sheet is removed or altered.



VICTORIA.

Certificate of Title,

UNDER THE "TRANSFER OF LAND ACT 1890."



Frederick Walter Purches of Scot Sale Road Scot Sale Wholesale Butcher is

now the proprietor of an Estate in Fee-simple, subject to the Encumbrances notified hereunder in All those pieces of Land, delineated and coloured red on the Map in the margin, containing Two thousand two hundred and ninety ^{one} ~~two~~ acres, three rods and ^{one} ~~two~~ ^{and} ~~four~~ ^{four} perches or thereabouts being Crown Allotments Four ^A Four ^B Eleven ^A and Eleven ^B and Crown Sections Five and Six Parish of Starrandyske County of Evelyn.

WCA
C.O. 5280
8 91

ORIGINAL CERTIFICATE,
Not to be dealt with outside the Titles Office.

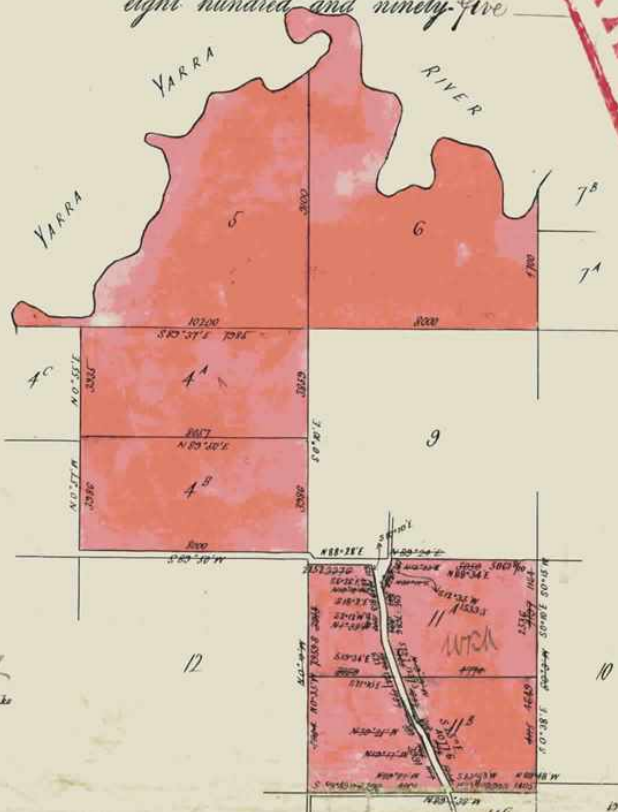
Dated the Seventeenth day of June — One thousand eight hundred and ninety-five

Wm. Byrce

Assistant Registrar of Titles.
ENCUMBRANCES REFERRED TO.



CANCELLED



The Measurements are in Links



T02574-725-1-9

Delivered on-line by LANDATA®
This document provides an image of a cancelled copy of the Register. It is not a statement from the register of subsisting information in relation to the land to which it refers.

WARNING

Vol. 456
 1135
 1479
 1521
 1852

Fol. 141171
 226976
 294406
 304008
 370223

Transfer 359505

Application

Nature of Instrument.	Day and Hour of its Production.	Names of the Parties to it.	Number or Symbol thereon.
<p><i>Moore & Co</i> <i>ASST. REGISTRAR OF TITLES</i> <i>15th August 1896</i></p>	<p>The 17th June 1895 at 2.50 p.m.</p>	<p>Frederick Walter Purches to The Mutual Assurance Society of Victoria Limited. <i>Jm Byrne</i> Assistant Registrar of Titles.</p>	<p>165569.</p>
<p>The Mutual Assurance Society of Victoria Limited of 406 Collins Street Melbourne is now the Proprietor of the within-described Estate and Land, by Transfer from the within-named Frederick Walter Purches, registered on the 15th day of August 1896, at 10.25 o'clock in the fore noon, and</p>			
<p>Transfer as to part CANCELLED AS TO THE LAND IN CERTIFICATE OF TITLE, VOL. 2718 FOL. 543443 & 4 AREA 23 AC. 3 RDS. 18 PER <i>Edward Dore</i> ASST. REGISTRAR OF TITLES</p>	<p>The 13th March 1899 at 1 p.m.</p>	<p>The Mutual Assurance Society of Victoria Limited to The President Councillors and Ratepayers of the Shire of Lilydale <i>Edward Dore</i> Assistant Registrar of Titles.</p>	<p>404320</p>
<p>CANCELLED. SEE CERTIFICATE OF TITLE VOL. 2734 FOL. 546734 & 5. <i>Wm Andrews</i> ASST. REGISTRAR OF TITLES.</p>			
<p>Assistant Registrar of Titles.</p>			
<p>Assistant Registrar of Titles.</p>			

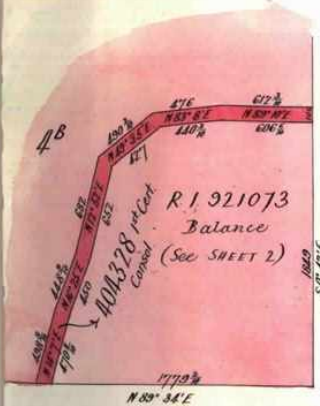
Delivered on-line by LANDATA®
 This document provides an image of a cancelled folio of the Register. It is not a statement from the register of subsisting information in relation to the land to which it refers.
 WARNING

Titles Office Record of Subdivision

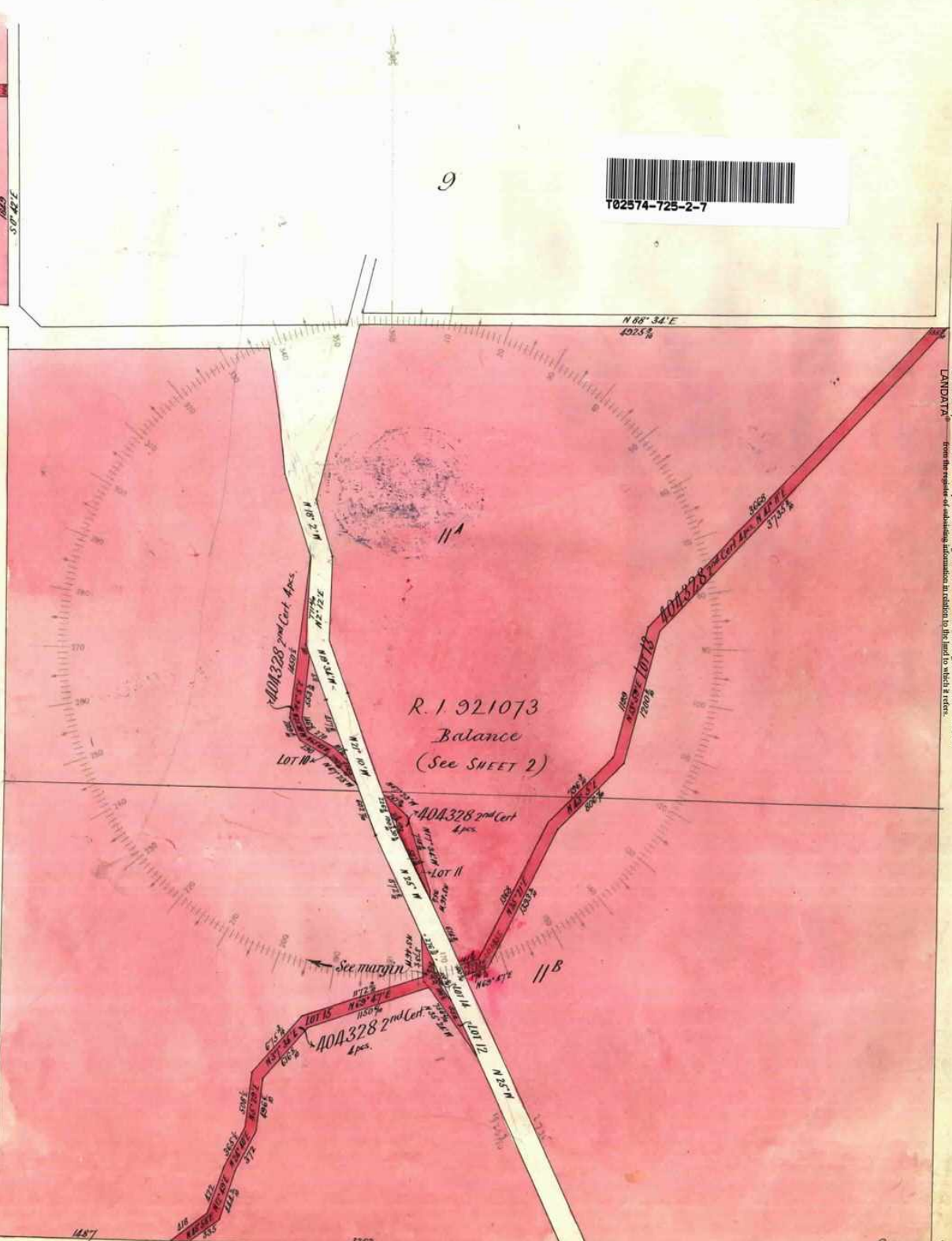
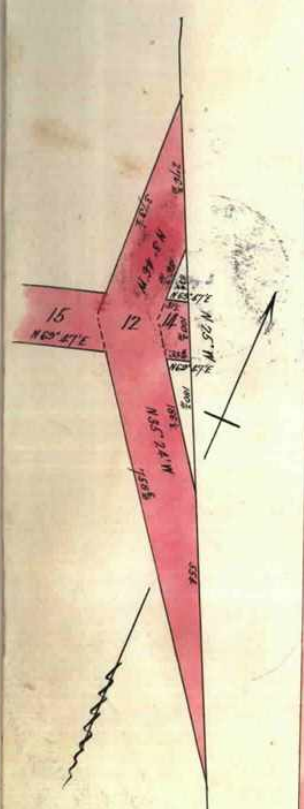
SCALE

8 chains to one inch

Register Book Vol. 2574 fol. 514725



9



Delivered on-line by LANDATA®
 This document provides an image of a cancelled folio of the Register. It is not a statement from the register of subdividing information in relation to the land to which it refers.

WARNING

10

M.A.S. *whelpac*

SHEET 1
(SHEET 2 ATTACHED)

11^c



Delivered on-line by LANDATA®
WARNING
This document provides an image of a cancelled folio of the Register. It is not a statement from the register of subsisting information in relation to the land to which it refers.

Natural Resources and Environment
INTENTIONALLY BLANK

Delivered
on-line by
LANDATA®

WARNING
This document provides an image of a cancelled copy of the Register. It is not a statement
from the register of subsisting information in relation to the land to which it refers.

Natural Resources and Environment
INTERNALLY
BLANK