



Imaged Document Cover Sheet

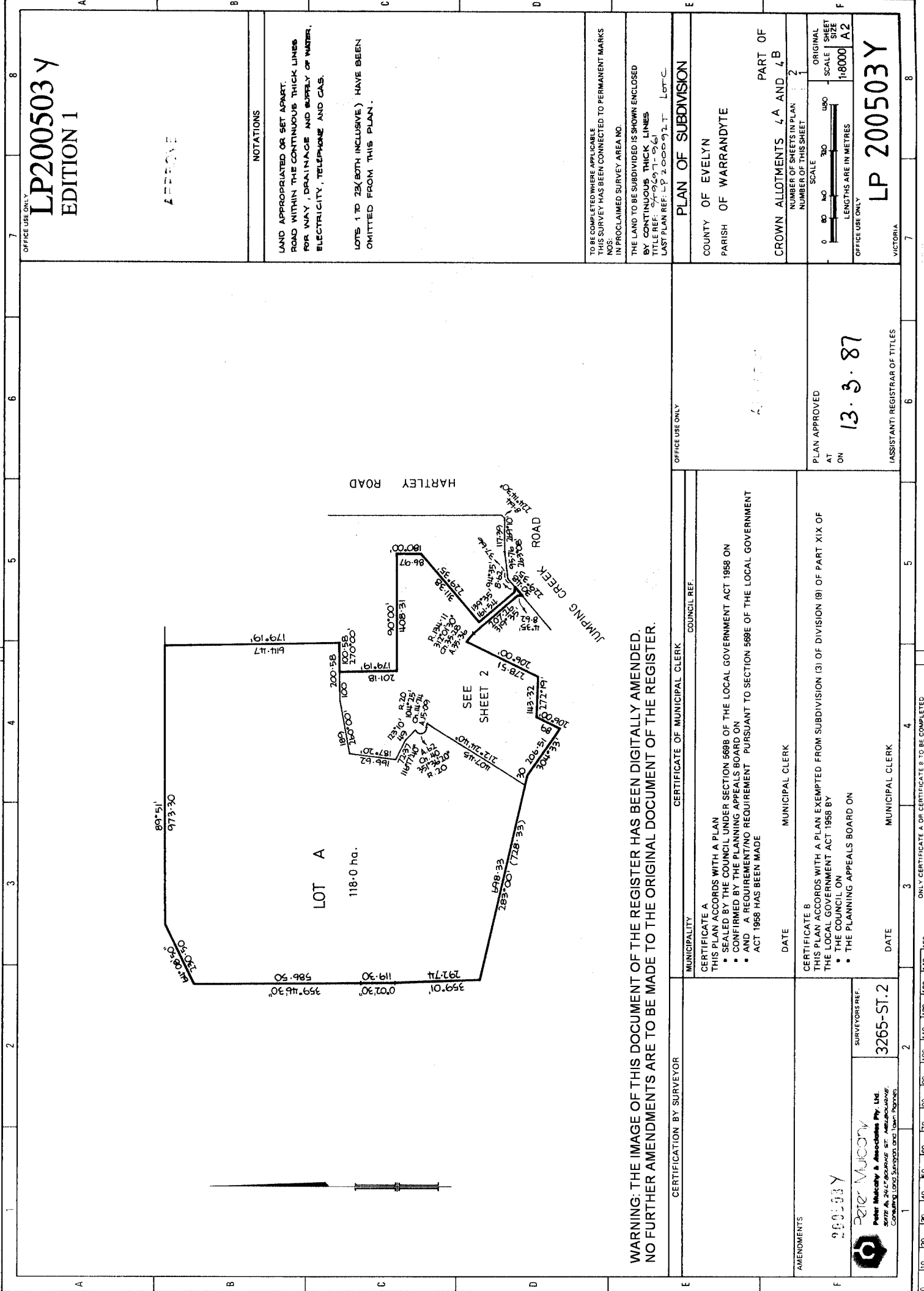
The document following this cover sheet is an imaged document supplied by LANDATA®, Secure Electronic Registries Victoria.

Document Type	Plan
Document Identification	LP200503Y
Number of Pages (excluding this cover sheet)	2
Document Assembled	04/07/2024 23:06

Copyright and disclaimer notice:

© State of Victoria. This publication is copyright. No part may be reproduced by any process except in accordance with the provisions of the Copyright Act 1968 (Cth) and for the purposes of Section 32 of the Sale of Land Act 1962 or pursuant to a written agreement. The information is only valid at the time and in the form obtained from the LANDATA® System. None of the State of Victoria, LANDATA®, Secure Electronic Registries Victoria Pty Ltd (ABN 86 627 986 396) as trustee for the Secure Electronic Registries Victoria Trust (ABN 83 206 746 897) accept responsibility for any subsequent release, publication or reproduction of the information.

The document is invalid if this cover sheet is removed or altered.



OFFICE USE ONLY
LP200503 Y
 EDITION 1

APPROVE

NOTATIONS

LAND APPROPRIATED OR SET APART.
 ROAD WITHIN THE CONTINUOUS THICK LINES
 FOR WAY, DRAINAGE AND SUPPLY OF WATER,
 ELECTRICITY, TELEPHONE AND GAS.

LOTS 1 TO 28 (BOTH INCLUSIVE) HAVE BEEN
 OMITTED FROM THIS PLAN.

TO BE COMPLETED WHERE APPLICABLE
 THIS SURVEY HAS BEEN CONNECTED TO PERMANENT MARKS
 NOS. IN PROCLAIMED SURVEY AREA NO.

THE LAND TO BE SUBDIVIDED IS SHOWN ENCLOSED
 BY CONTINUOUS THICK LINES
 TITLE REF. 2022/91-963
 LAST PLAN REF. LP 2000921, Lot C.

PLAN OF SUBDIVISION

COUNTY OF EVELYN
 PARISH OF WARRANDYTE

CROWN ALLOTMENTS 4A AND 4B
 NUMBER OF SHEETS IN PLAN 2
 NUMBER OF THIS SHEET 1

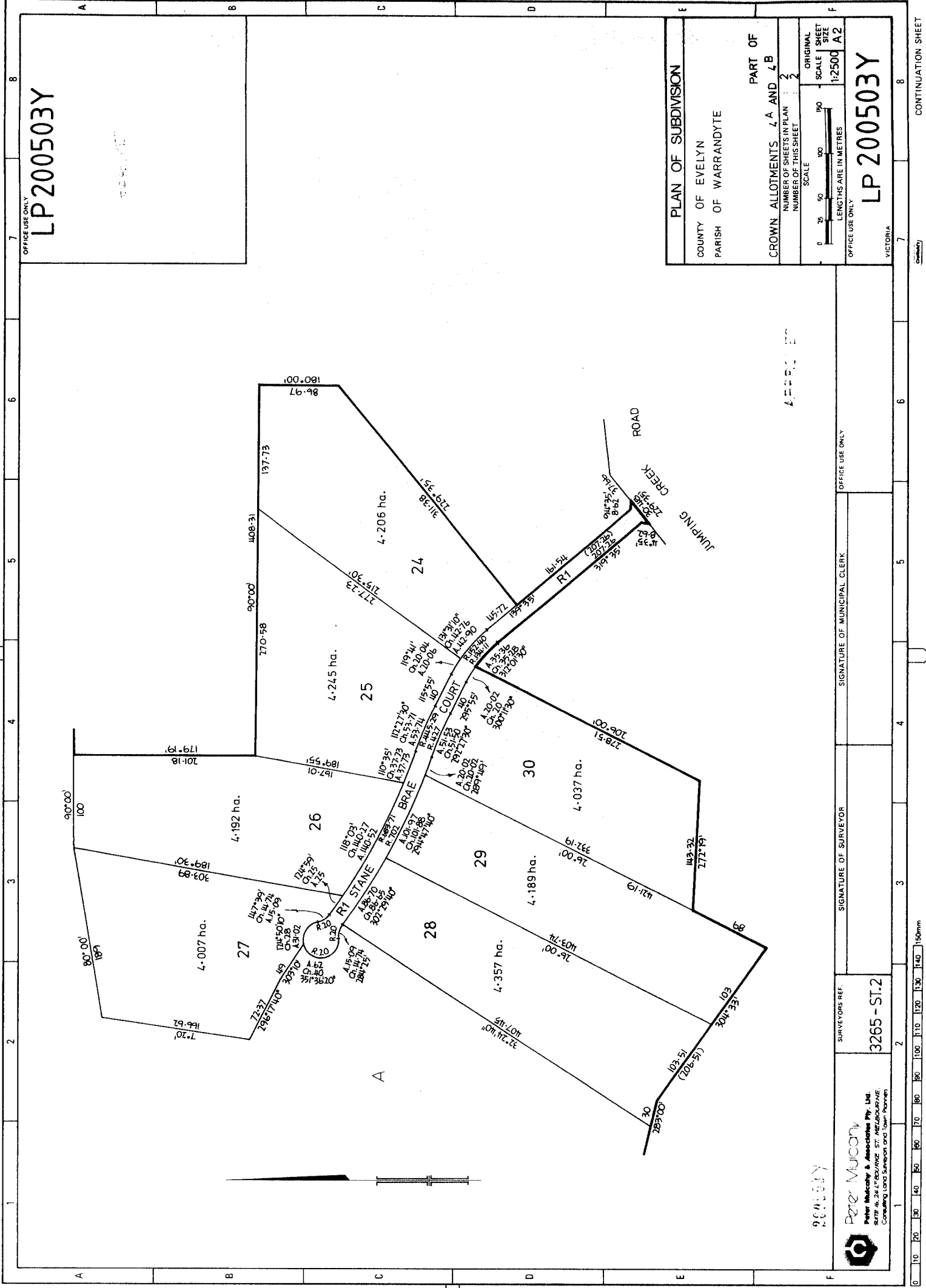
SCALE
 0 50 100 150
 LENGTHS ARE IN METRES
 ORIGINAL SCALE SHEET SIZE 1:8000 A2
 OFFICE USE ONLY

LP 200503 Y
 VICTORIA

WARNING: THE IMAGE OF THIS DOCUMENT OF THE REGISTER HAS BEEN DIGITALLY AMENDED.
 NO FURTHER AMENDMENTS ARE TO BE MADE TO THE ORIGINAL DOCUMENT OF THE REGISTER.

OFFICE USE ONLY	
CERTIFICATION BY SURVEYOR	CERTIFICATE OF MUNICIPAL CLERK
MUNICIPALITY THIS PLAN ACCORDS WITH A PLAN SEALED BY THE COUNCIL UNDER SECTION 568B OF THE LOCAL GOVERNMENT ACT 1958 ON CONFIRMED BY THE PLANNING APPEALS BOARD ON AND A REQUIREMENT/NO REQUIREMENT PURSUANT TO SECTION 568E OF THE LOCAL GOVERNMENT ACT 1958 HAS BEEN MADE DATE MUNICIPAL CLERK	MUNICIPALITY THIS PLAN ACCORDS WITH A PLAN EXEMPTED FROM SUBDIVISION (3) OF DIVISION (9) OF PART XIX OF THE LOCAL GOVERNMENT ACT 1958 BY THE COUNCIL ON THE PLANNING APPEALS BOARD ON DATE MUNICIPAL CLERK
AMENDMENTS	PLAN APPROVED AT ON
200503 Y Peter Mulcahy Peter Mulcahy & Associates Pty. Ltd. 307E & 241/2 BOURNE ST. MELBOURNE. Consulting Land Surveyors and Town Planners.	13.3.87 (ASSISTANT) REGISTRAR OF TITLES

ONLY CERTIFICATE A OR CERTIFICATE B TO BE COMPLETED
 * DELETE WORDS NOT APPLICABLE



OFFICE USE ONLY
LP 200503Y

PLAN OF SUBDIVISION	
COUNTY OF EVELYN	PART OF
PARISH OF WARRANDYTE	CROWN ALLOTMENTS 4 A AND 4 B
NUMBER OF SHEETS IN PLAN	2
NUMBER OF THIS SHEET	2
SCALE	ORIGINAL SCALE 1:2500 SHEET SIZE A2
LENGTHS ARE IN METRES	
OFFICE USE ONLY	
LP 200503Y	
VICTORIA	

OFFICE USE ONLY

SIGNATURE OF SURVEYOR

SIGNATURE OF MUNICIPAL CLERK

SURVEYORS REF.
3265 - ST.2

Peter Muijovich
Peter Muijovich & Associates Pty Ltd
Suite 46, 241/72nd St, MELBOURNE
Consulting Land Surveyors and Town Planners

900503Y