



Imaged Document Cover Sheet

The document following this cover sheet is an imaged document supplied by LANDATA®, Secure Electronic Registries Victoria.

Document Type	Cancelled Title
Document Identification	4469/757
Number of Pages (excluding this cover sheet)	4
Document Assembled	13/06/2024 09:15

Copyright and disclaimer notice:

© State of Victoria. This publication is copyright and includes confidential information. No part may be reproduced by any process except in accordance with the provisions of the Copyright Act or pursuant to a written agreement. The State of Victoria does not warrant the accuracy or completeness of the information in this publication and any person using or relying upon such information does so on the basis that the State of Victoria shall bear no responsibility or liability whatsoever for any errors, faults, defects or omissions in the information.

The document is invalid if this cover sheet is removed or altered.

CANCELLED

Entered in the Register Book,

Vol 4469 Fol.

893757



VICTORIA.

Certificate of Title,

UNDER THE "TRANSFER OF LAND ACT 1915."

Wm J

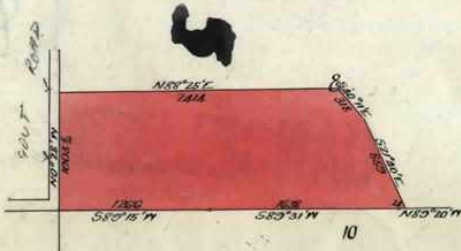
Francis Walter Stephenson of Wonga Park Farmer is -----
now the proprietor of an Estate in Fee-simple, subject to the Encumbrances
notified hereunder in. All that piece of Land, delineated and coloured
red on the map in the margin containing Twenty-seven acres Three roods and Nine----
perches or thereabouts being part of Crown Section Eight Parish of Warrandyte ---
County of Evelyn -----

ORIGINAL CERTIFICATE.
Not to be dealt with outside the Titles Office

Dated the Fourteenth
thousand nine hundred and twenty-one.

day of May One

Wm J. Corry
Assistant Registrar of Titles.
ENCUMBRANCES REFERRED TO.



The Measurements are in feet

Delivered on-line by LANDATA®
WARNING
This document provides an image of a cancelled form of the Register. It is not a statement from the register or a substitute for information in relation to the land to which it refers.

Nature of Instrument.	Time of its Production for Registration.
<p><i>Emily Stephenson of Clyde Married Woman</i> is now the proprietor of the within described estate by transfer from <i>Francis Walter Stephenson</i> registered on <i>21st January 1924</i> and numbered <i>1147488</i> <i>J. H. Grouney</i> Assistant Registrar of Titles.</p>	
<p>MORTGAGE TO THE VICTORIAN PRODUCERS CO-OPERATIVE COMPANY LIMITED registered on <i>13th March 1925</i> and numbered <i>51672</i> <i>M. G. Gleeson</i> Assistant Registrar of Titles.</p>	
<p>MORTGAGE TO <i>Grace Amy Keys</i> registered on <i>22nd August 1926</i> and numbered <i>5483</i> <i>M. G. Gleeson</i> Assistant Registrar of Titles.</p>	
<p>MORTGAGE TO THE COMMISSIONERS OF THE STATE SAVINGS BANK OF VICTORIA registered on <i>22nd August 1928</i> numbered <i>598574</i> <i>Geo. S. Carey</i> Assistant Registrar of Titles.</p>	
<p><i>Basil Leslie Willey</i> <i>Spamway Employee</i> and <i>Lillian Mary Willey</i> <i>Married Woman</i> both of <i>39 Katawa Grove Brunswick</i> are now the proprietors of the within described estate by transfer registered on <i>17th January 1945</i> and numbered <i>1940583</i> <i>J. H. Grouney</i> Assistant Registrar of Titles.</p>	
<p>MORTGAGE TO THE COMMISSIONERS OF THE STATE SAVINGS BANK OF VICTORIA registered on <i>17th January 1945</i> numbered <i>842149</i> <i>J. H. Grouney</i> Assistant Registrar of Titles.</p>	
<p><i>Stanley Ormond Daley</i> <i>Farmer</i> and <i>Mary Daley</i> <i>Married Woman</i> both of <i>Homesstead Road Croyston</i> are now the proprietors of the within described estate by transfer registered on <i>10th September 1946</i> and numbered <i>2015187</i> <i>J. F. W. Gordon</i> Assistant Registrar of Titles.</p>	

To whom given.	Number or Symbol thereon.
<p>MORTGAGE TO THE COMMISSIONERS OF THE STATE SAVINGS BANK OF VICTORIA registered on <i>14th November 1951</i> numbered <i>969474</i> <i>K.L.K. Victoria</i> Assistant Registrar of Titles.</p>	
<p>TRANSFER AS TO PART No. B 100326 registered <i>14 November 1960</i> CANCELLED AS TO PART See Vol. 8310 Fol. 248 <i>M.A. Victoria</i></p>	
<p>STATE ELECTRICITY COMMISSION has pursuant to section 57 of Transfer of Land Act served a notification relating to the compulsory acquisition of an easement over land herein. Dated <i>5 MAY 1967</i> Entered <i>10 MAY 1967</i> No. C 768426 (Plan with letter) <i>C.T. Victoria</i></p>	
<p>CREATION OF EASEMENT Registered <i>22nd August 1969</i> No. D464201 <i>J.R.T. Victoria</i></p>	
<p>TRANSFER AS TO BALANCE No. E 408070 registered <i>31st May 1972</i> CANCELLED See Vol. 8939 Fol. 748 <i>K.L.K. Victoria</i></p>	
<p>CANCELLED</p>	

Delivered on-line by LANDATA® from the register of subsisting information in relation to the land to which it refers.

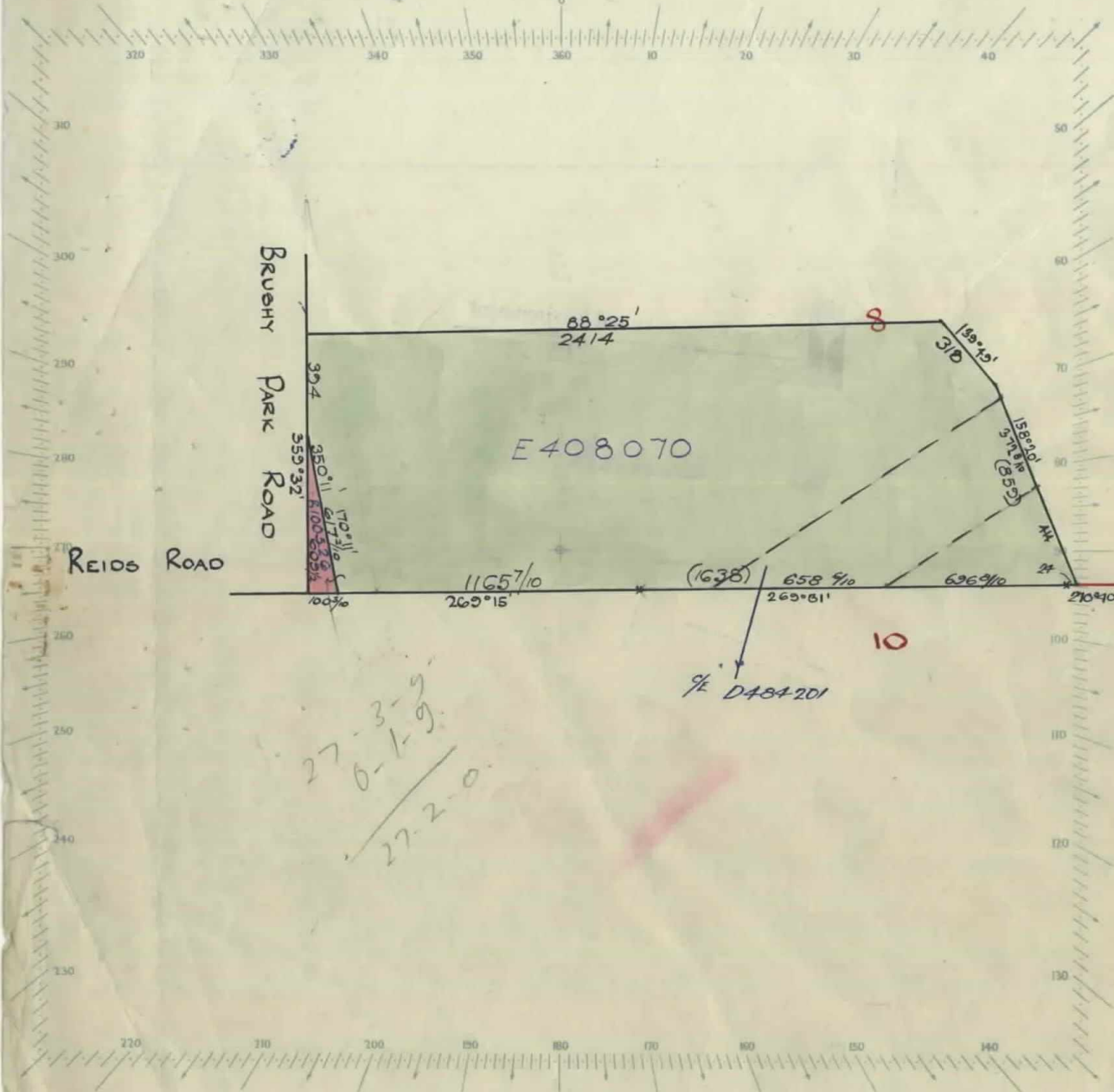
WARNING

SCALE: 5 CHAINS to one inch

Vol. 4469 fol. 757



T04469-757-2-4



27-3-9
0-1-9
27-2-0

SK MP.
15-8-01.

Delivered on-line by LANDATA®
WARNING
This document provides an image of a cancelled folio of the Register. It is not a statement from the register of subsisting information in relation to the land to which it refers.

Delivered
on-line by
LANDATA®

WARNING
This document provides an image of a cancelled folio of the Register. It is not a statement
from the register of subsisting information in relation to the land to which it refers.

Natural Resources and Environment
AGRICULTURE • RESOURCES • CONSERVATION • LAND MANAGEMENT

**INTENTIONALLY
BLANK**