

Imaged Document Cover Sheet

The document following this cover sheet is an imaged document supplied by LANDATA®, Secure Electronic Registries Victoria.

Document Type	Plan
Document Identification	LP097769
Number of Pages (excluding this cover sheet)	1
Document Assembled	10/05/2024 14:10

Copyright and disclaimer notice:

© State of Victoria. This publication is copyright. No part may be reproduced by any process except in accordance with the provisions of the Copyright Act 1968 (Cth) and for the purposes of Section 32 of the Sale of Land Act 1962 or pursuant to a written agreement. The information is only valid at the time and in the form obtained from the LANDATA® System. None of the State of Victoria, LANDATA®, Secure Electronic Registries Victoria Pty Ltd (ABN 86 627 986 396) as trustee for the Secure Electronic Registries Victoria Trust (ABN 83 206 746 897) accept responsibility for any subsequent release, publication or reproduction of the information.

The document is invalid if this cover sheet is removed or altered.

LP97769

EDITION 1

APPROVED 16/4/73

PLAN OF SUBDIVISION PART OF CROWN ALLOTMENT 9 ^H PARISH OF WARRANDYTE COUNTY OF EVELYN VOL. 8445 FOL. 444	APPROPRIATIONS	ENCUMBRANCES
	Blue. Drainage + Sewerage Brown. Drainage, Sewerage and Way	

Measurements are in Feet & Inches

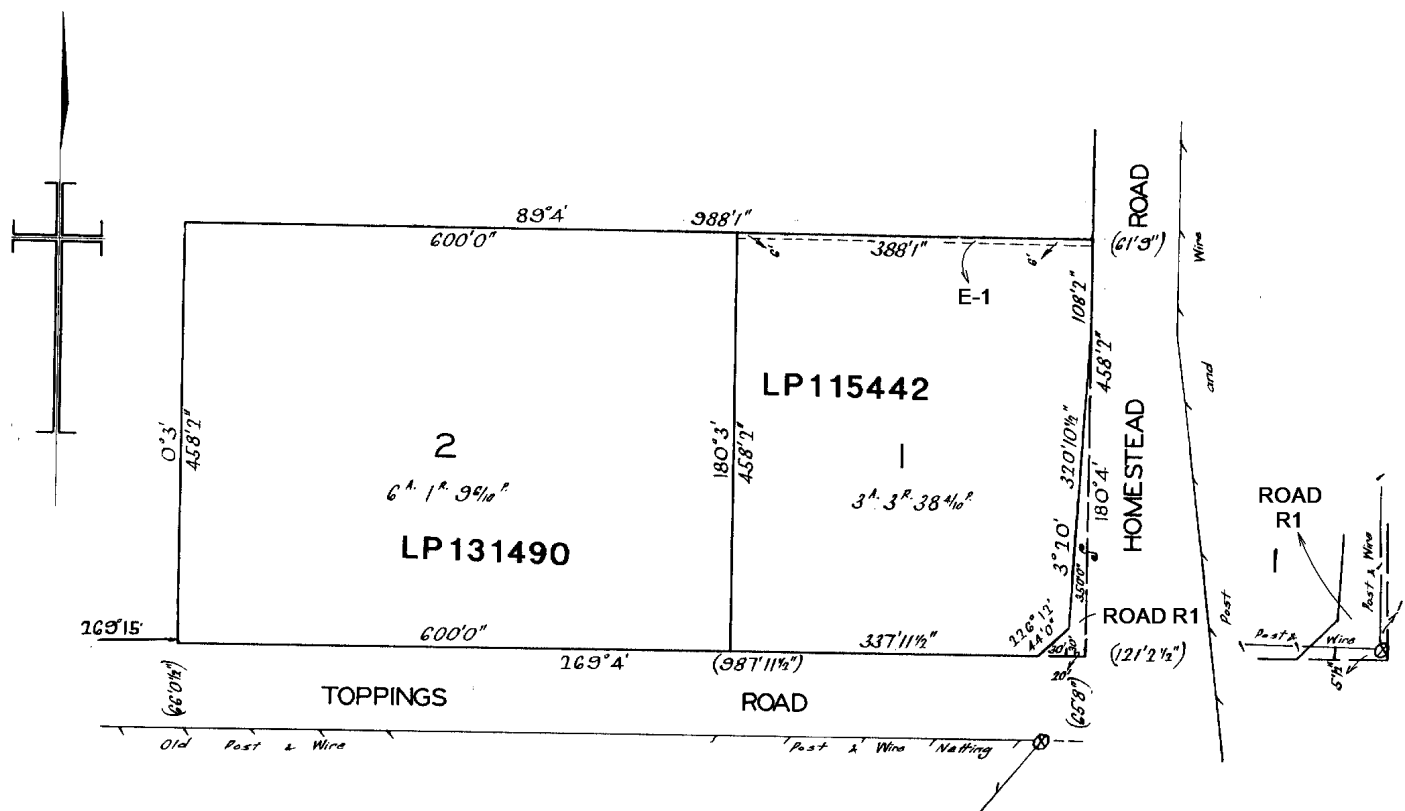
Conversion Factor

FEET X 0.3048 = METRES

COLOUR CODE

E-1 = BLUE

R1 = BROWN



Roadwidths are not drawn to scale.

The external boundaries shown hereon do not agree with those delineated on Certificate of Title Vol. 8445 Fol. 444.