

# Imaged Document Cover Sheet

The document following this cover sheet is an imaged document supplied by LANDATA®, Secure Electronic Registries Victoria.

Document Type	<b>Plan</b>
Document Identification	<b>LP115442</b>
Number of Pages (excluding this cover sheet)	<b>2</b>
Document Assembled	<b>17/06/2024 12:41</b>

**Copyright and disclaimer notice:**

© State of Victoria. This publication is copyright. No part may be reproduced by any process except in accordance with the provisions of the Copyright Act 1968 (Cth) and for the purposes of Section 32 of the Sale of Land Act 1962 or pursuant to a written agreement. The information is only valid at the time and in the form obtained from the LANDATA® System. None of the State of Victoria, LANDATA®, Secure Electronic Registries Victoria Pty Ltd (ABN 86 627 986 396) as trustee for the Secure Electronic Registries Victoria Trust (ABN 83 206 746 897) accept responsibility for any subsequent release, publication or reproduction of the information.

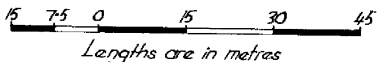
The document is invalid if this cover sheet is removed or altered.

115442

LP115442

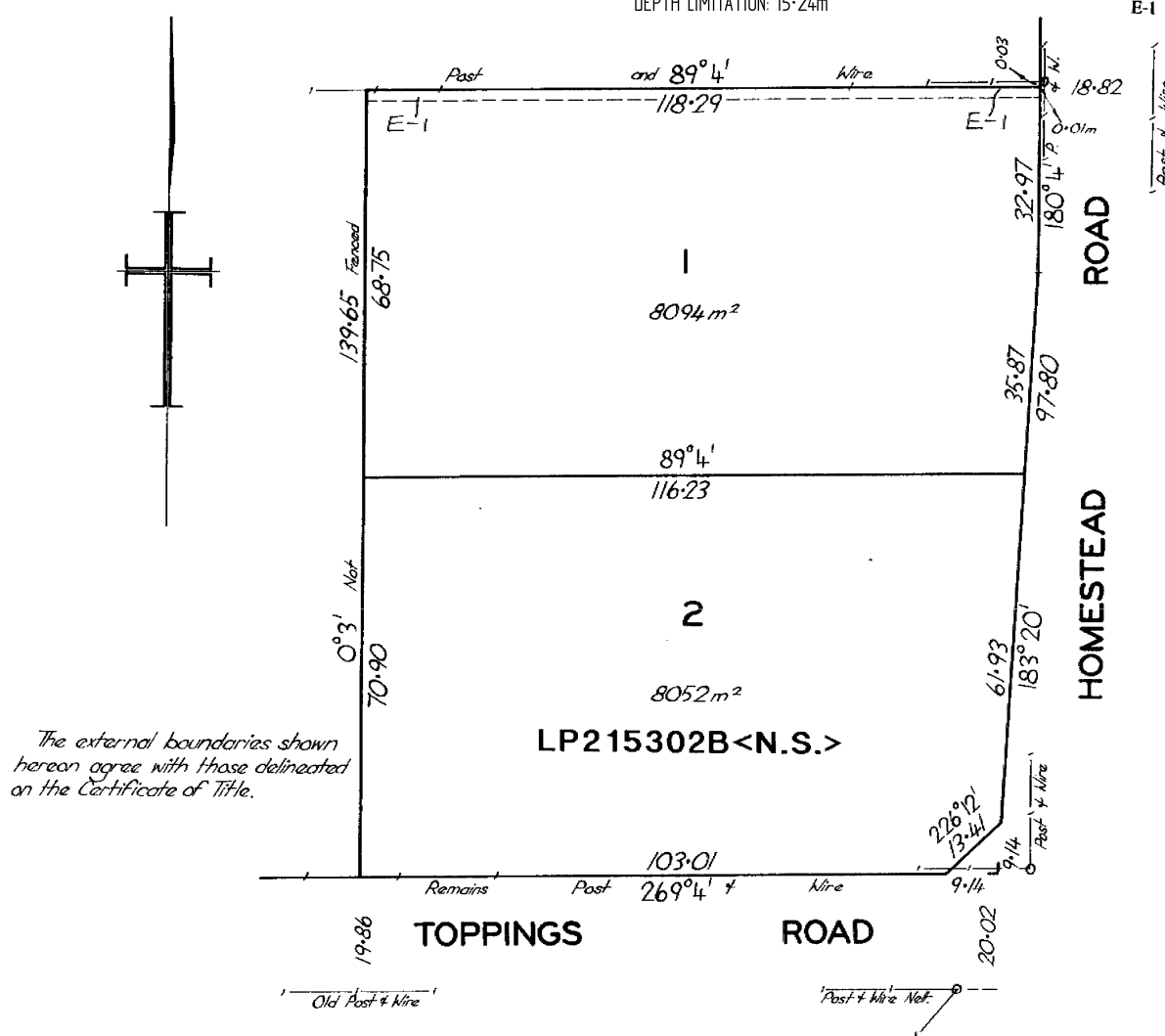
EDITION 1

APPROVED 6/18/75

PLAN OF SUBDIVISION	APPROPRIATIONS	ENCUMBRANCES
<p>PART OF CROWN ALLOTMENT 9<sup>H</sup></p> <p>PARISH OF WARRANDYTE</p> <p>COUNTY OF EVELYN</p> 		<p>Blue-Drainage &amp; Sewerage 1.83 metres wide (vide L.P. 97769)</p> <p>(BY VIRTUE OF SECTION 98 OF THE TRANSFER OF LAND ACT)</p>

DEPTH LIMITATION: 15.24m

COLOUR CONVERSION  
E-1 = BLUE



FOR APPROPRIATIONS, ETC,  
SEE BACK HEREOF

SUBDIVISIONAL  
CERTIFICATE OF TITLE V. 8979 F. 126

FOR TITLE REFERENCES TO LOTS  
SEE PARCELS INDEX

LP 115442  
BACK OF SHEET 1

LODGED BY AUGHTERSON GIBLETT AND WILLIAMS.

DEALING No. DATE 6<sup>TH</sup> / MAY / 1975

DECLARED BY JOHN WILLIS HUMPHREYS

ON 21<sup>ST</sup> / Nov / 1974

COUNCIL SHIRE OF LILLYDALE

DATE OF CONSENT 14<sup>TH</sup> / APR / 1975

PLAN MAY BE LODGED / /

PLAN APPROVED. DATE 6<sup>TH</sup> / AUG / 1975 TIME 3.15<sup>a.m.</sup> p.m.

ENCUMBRANCES.

BLUE - DRAINAGE AND SEWERAGE.  
1.83 METRES WIDE.  
(VIDE L.P. 97769).