



Imaged Document Cover Sheet

The document following this cover sheet is an imaged document supplied by LANDATA®, Secure Electronic Registries Victoria.

Document Type	Cancelled Title
Document Identification	3791/120
Number of Pages (excluding this cover sheet)	4
Document Assembled	28/06/2024 22:16

Copyright and disclaimer notice:

© State of Victoria. This publication is copyright and includes confidential information. No part may be reproduced by any process except in accordance with the provisions of the Copyright Act or pursuant to a written agreement. The State of Victoria does not warrant the accuracy or completeness of the information in this publication and any person using or relying upon such information does so on the basis that the State of Victoria shall bear no responsibility or liability whatsoever for any errors, faults, defects or omissions in the information.

The document is invalid if this cover sheet is removed or altered.

MEMORIALS OF INSTRUMENTS.

Nature of Instrument.	Time of its Production for Registration.	Names of the Parties to it.	Number or Symbol thereon.
<p>TRANSFER as to part to <i>Frank Burch</i> The registered on <i>20th May 1924</i> day of and numbered <i>1166105</i> 19, at CANCELLED as to part See Certificate of Title Vol. 4852 Pol. 970332 <i>M. W. Peterson</i> <i>Area 11. 1. 6</i> Assistant Registrar of Titles.</p>	<p><i>Edward Henry</i> <i>George Burch</i> registered on <i>20th May 1924</i> and numbered <i>1166106</i>. CANCELLED. See Certificate of Title Vol. 4852 Pol. 970333 <i>M. W. Peterson</i> Assistant Registrar of Titles.</p>		
		<p style="text-align: center;">CANCELLED</p>	

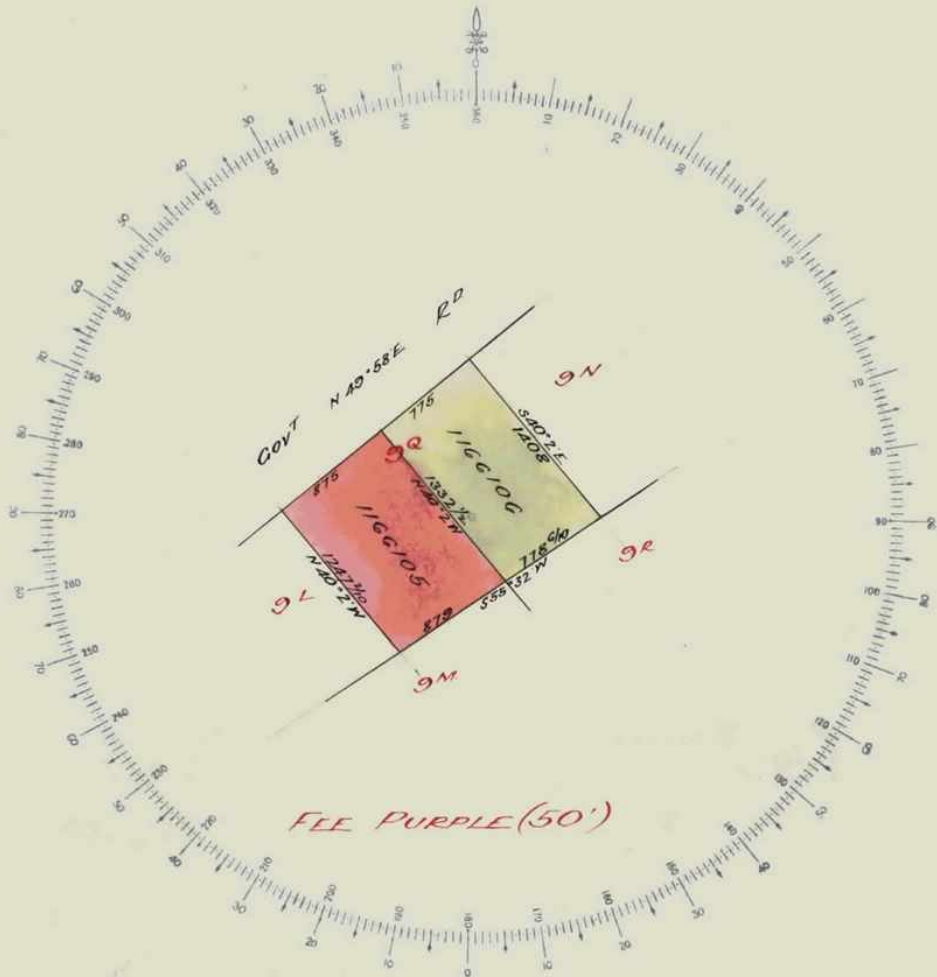
Delivered on-line by LANDATA®

WARNING: This document provides an image of a cancelled folio of the Register. It is not a statement from the register of subsisting information in relation to the land to which it refers.



SCALE 8 chains to one inch

Vol. 3791 fol -120



Delivered on-line by LANDATA®
WARNING
This document provides an image of a scanned folio of the Register. It is not a statement from the register of subsisting information in relation to the land to which it refers.


253
1/25/24

10 2-19



703791-120-2-6

31/5/24

 Natural Resources and Environment
AGRICULTURE • RESOURCES • CONSERVATION • LAND MANAGEMENT

**INTENTIONALLY
BLANK**