



Imaged Document Cover Sheet

The document following this cover sheet is an imaged document supplied by LANDATA®, Secure Electronic Registries Victoria.

Document Type	Cancelled Title
Document Identification	4608/467
Number of Pages (excluding this cover sheet)	6
Document Assembled	01/06/2024 08:05

Copyright and disclaimer notice:

© State of Victoria. This publication is copyright and includes confidential information. No part may be reproduced by any process except in accordance with the provisions of the Copyright Act or pursuant to a written agreement. The State of Victoria does not warrant the accuracy or completeness of the information in this publication and any person using or relying upon such information does so on the basis that the State of Victoria shall bear no responsibility or liability whatsoever for any errors, faults, defects or omissions in the information.

The document is invalid if this cover sheet is removed or altered.

CANCELLED

Entered in the Register Books

Vol. 4608 Fol.

921467

467.



VICTORIA.

Certificate of Title,

UNDER THE "TRANSFER OF LAND ACT 1915."

HJ

x Peter Etchells Barton and *✓* John Barton both of Page Street Clifton Hill ----

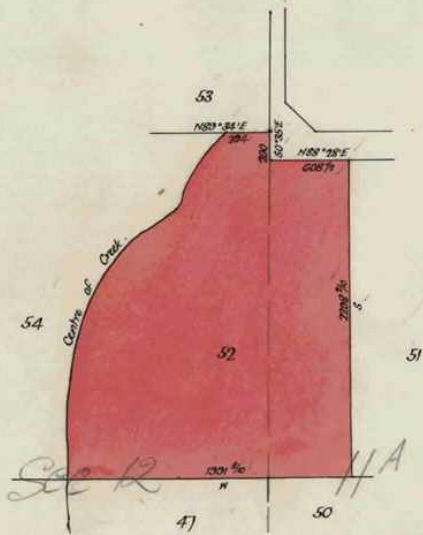
Bootmakers are now the proprietors as tenants in common in equal shares - - - -

AM now the proprietors of an Estate in Fee-simple, subject to the Encumbrances notified hereunder in All th at piece of Land, delineated and coloured red on the map in the margin containing Thirty-nine acres Three roods and - - - - Twenty-six perches or thereabouts being Lot 52 on Plan of Subdivision No. 4315 --- lodged in the Office of Titles and being part of Crown Section Twelve and part of--- Crown Allotment Eleven^A Parish of Warrandyte County of Evelyn - - - - -

ORIGINAL CERTIFICATE.
Not to be dealt with outside the Titles Office:

Dated the Sixteenth day of August One thousand nine hundred and twenty-two.

Alfred Comport
Assistant Registrar of Titles.
ENCUMBRANCES REFERRED TO.



Edwards
The Measurements are in feet



T04608-467-1-9

Delivered on-line by LANDATA®
This document provides an image of a cancelled folio of the Register. It is not a statement from the register or substituting information in relation to the land to which it refers.

WARNING

Vol. 2734 Fol. 546735

Transfer. 1060752

Application.

TRANSFER AS TO PART to

Peter Mitchell Barton

registered

on *22nd February 1930* numbered *1127803*

CANCELLED AS TO PART See Certificate of Title

Vol. 5632 Fol. 1126293

T. N. Hooking

Assistant Registrar of Titles

TRANSFER AS TO BALANCE to

John Barton

registered

on *22nd February 1930* numbered *1127804*

CANCELLED See Certificate of Title

Vol. 5632 Fol. 1126294

T. N. Hooking

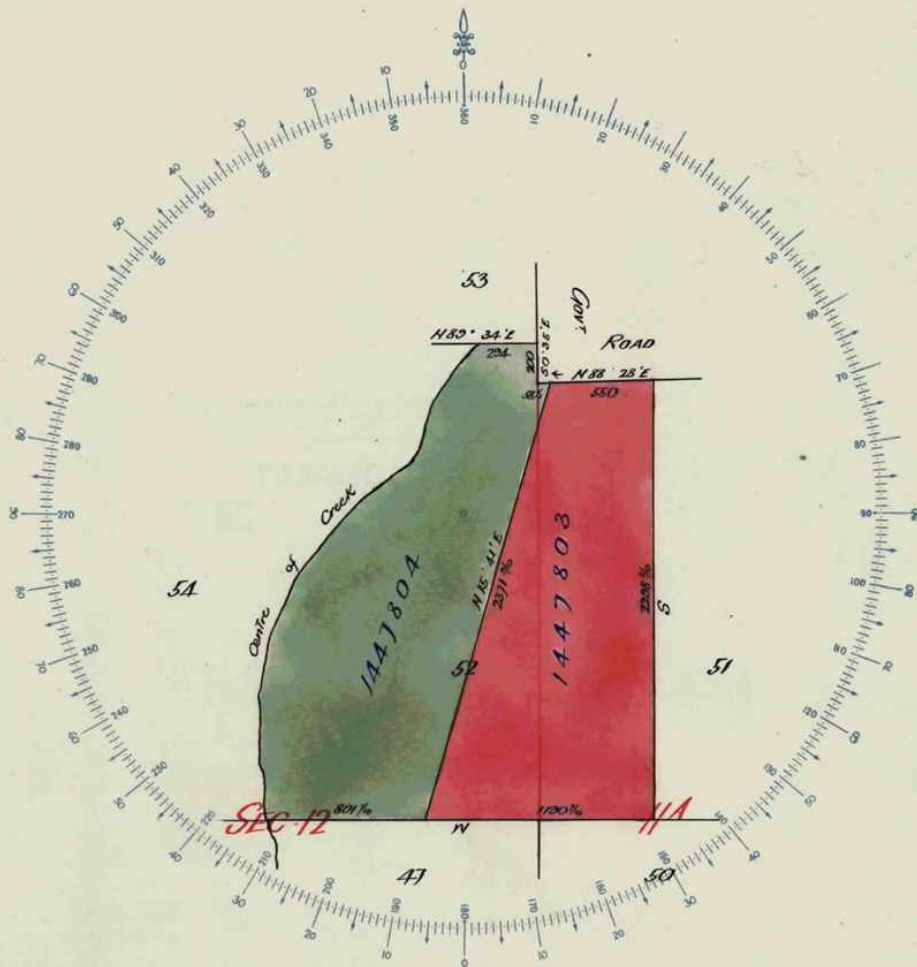
Assistant Registrar of Titles

CANCELLED

Delivered on-line by LANDATA®
WARNING
This document provides an image of a cancelled folio of the Register. It is not a statement from the register of subsisting information in relation to the land to which it refers.

SCALE: 6 chs to one inch.


Vol. 4608 fol. - 467



Delivered on-line by LANDATA®
WARNING: This document provides an image of a cancelled folio of the Register. It is not a statement from the register or subsisting information in relation to the land to which it refers.



3/3/02

 **Natural Resources and Environment**
AGRICULTURE • RESOURCES • CONSERVATION • LAND MANAGEMENT

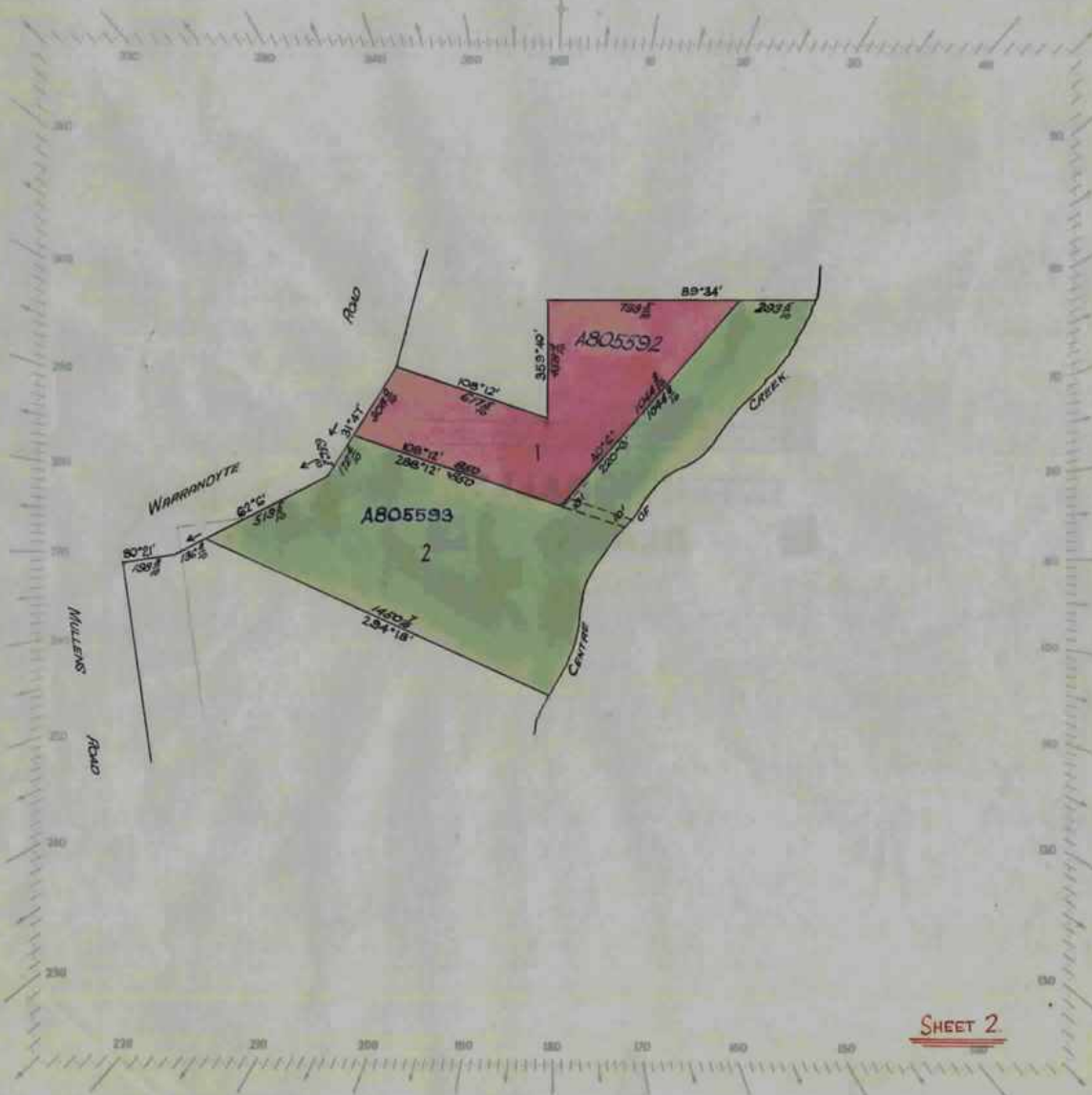
**INTENTIONALLY
BLANK**

Delivered on-line by LANDATA®

WARNING
This document provides an image of a cancelled folio of the Register. It is not a statement from the register of subsisting information in relation to the land to which it refers.

SCALE: 6 CHAINS to one inch

Vol. 4608 Fol. -488



Delivered on-line by LANDATA®

WARNING This document provides an image of a cancelled folio of the Register. It is not a statement from the register of subsisting information in relation to the land to which it refers.



Handwritten notes: 16, P.C.D., 12. 11. 06

Delivered
on-line by
LANDATA®

WARNING
This document provides an image of a cancelled folio of the Register. It is not a statement
from the register of subsisting information in relation to the land to which it refers.

 **Natural Resources and Environment**
AGRICULTURE • RESOURCES • CONSERVATION • LAND MANAGEMENT

**INTENTIONALLY
BLANK**