



Imaged Document Cover Sheet

The document following this cover sheet is an imaged document supplied by LANDATA®, Secure Electronic Registries Victoria.

Document Type	Plan
Document Identification	LP219573V
Number of Pages (excluding this cover sheet)	1
Document Assembled	01/06/2024 16:55

Copyright and disclaimer notice:

© State of Victoria. This publication is copyright. No part may be reproduced by any process except in accordance with the provisions of the Copyright Act 1968 (Cth) and for the purposes of Section 32 of the Sale of Land Act 1962 or pursuant to a written agreement. The information is only valid at the time and in the form obtained from the LANDATA® System. None of the State of Victoria, LANDATA®, Secure Electronic Registries Victoria Pty Ltd (ABN 86 627 986 396) as trustee for the Secure Electronic Registries Victoria Trust (ABN 83 206 746 897) accept responsibility for any subsequent release, publication or reproduction of the information.

The document is invalid if this cover sheet is removed or altered.

OFFICE USE ONLY

LP219573V
EDITION 2

CHARTS 21 & 24

NOTATIONS

LAND SUBJECT TO EASEMENT
E-1: DRAINAGE & SEWERAGE VIDE LP 143026.

LAND APPROPRIATED OR SET APART
E-2: DRAINAGE & SEWERAGE
E-3: CARRIAGEWAY & DRAINAGE
ROADS WITHIN THE CONTINUOUS THICK LINES FOR WAY, DRAINAGE, & SEWERAGE AND SUPPLY OF WATER, TELEPHONE, ELECTRICITY & GAS.

OTHER NOTATIONS
DATE: 5th OCTOBER, 1989
SURVEY: 19th SEPTEMBER, 1989.

LOTS ONE-3 & A-C (INCL.) HAVE BEEN OMITTED FROM THE PLAN.

TO BE COMPLETED WHERE APPLICABLE
THIS SURVEY HAS BEEN CONNECTED TO PERMANENT MARKS NOS:
IN PROCLAIMED SURVEY AREA NO.

THE LAND TO BE SUBDIVIDED IS SHOWN ENCLOSED BY THICK LINES

TITLE REF: VOL. 989, FOL. 546
LAST PLAN REF: LP 21670% B (LOT C.)

PLAN OF SUBDIVISION

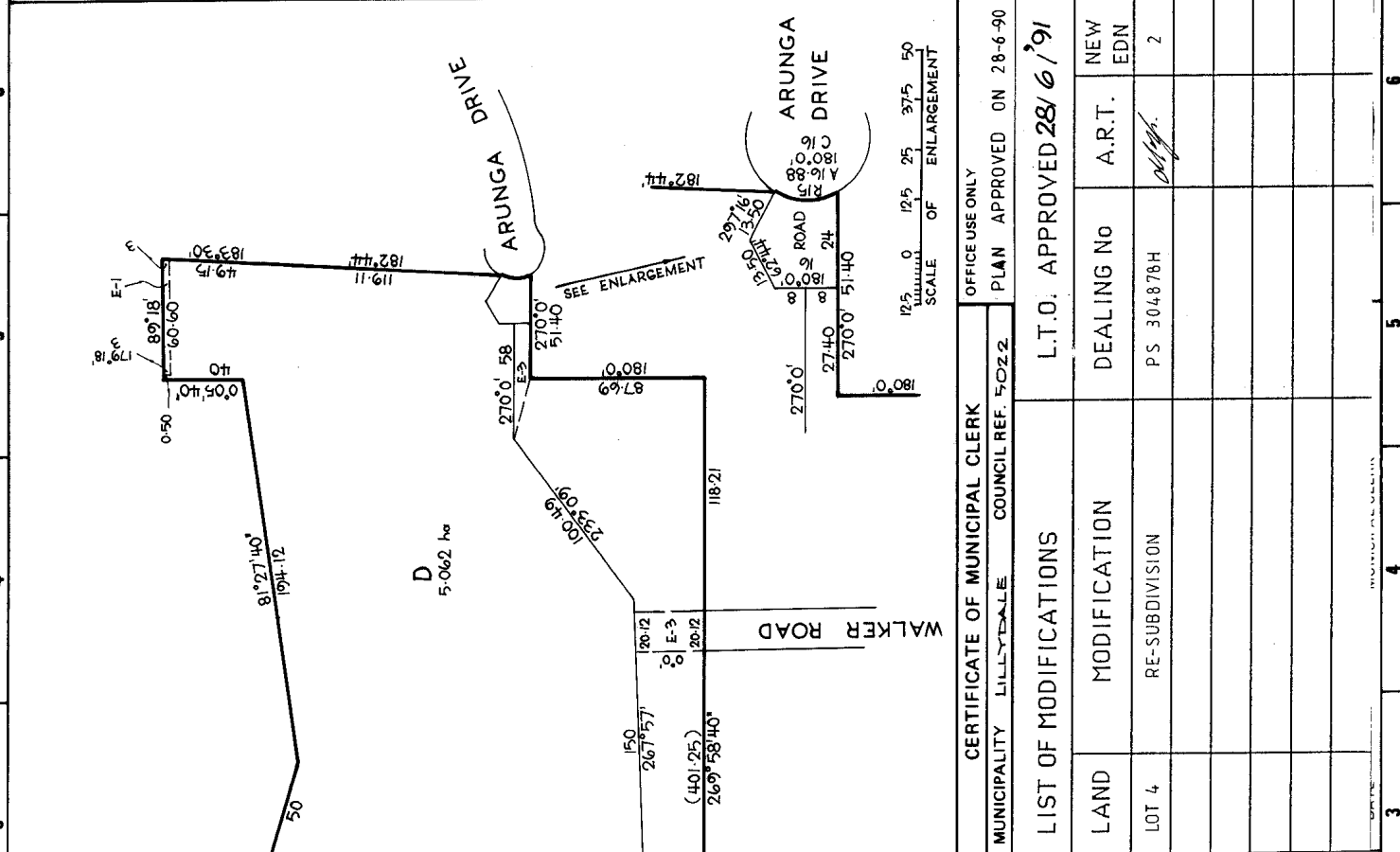
COUNTY EVELYN
PARISH WARRANDYTE
CROWN SECTION 12 (PART)
CROWN ALLOTMENT 11A (PART)

NUMBER OF SHEETS IN PLAN : 1
NUMBER OF THIS SHEET : 1

SCALE
ORIGINAL SCALE SHEET SIZE A3
LENGTHS ARE IN METRES
1:2500

OFFICE USE ONLY

VICTORIA



CERTIFICATION BY SURVEYOR		CERTIFICATE OF MUNICIPAL CLERK	
MUNICIPALITY LILLYDALE		COUNCIL REF. 5022	
LIST OF MODIFICATIONS		PLAN APPROVED ON 28-6-90	
LAND	MODIFICATION	DEALING NO	NEW EDN
LOT 4	RE-SUBDIVISION	PS 304878H	2
AMENDMENTS		L.T.O. APPROVED 28/6/91	
KIRKPATRICK & WEBBER PTY. LTD. (Incorporated in Victoria) LAND SURVEYORS & TOWN PLANNERS 1/2 Maroonah Highway, Ringwood, Victoria, 3134 Telephone (03) 870 4422		SURVEYORS REF. 5780 G	