



# Imaged Document Cover Sheet

The document following this cover sheet is an imaged document supplied by LANDATA®, Secure Electronic Registries Victoria.

Document Type	<b>Cancelled Title</b>
Document Identification	<b>9014/518</b>
Number of Pages (excluding this cover sheet)	<b>2</b>
Document Assembled	<b>14/05/2024 23:03</b>

**Copyright and disclaimer notice:**

© State of Victoria. This publication is copyright and includes confidential information. No part may be reproduced by any process except in accordance with the provisions of the Copyright Act or pursuant to a written agreement. The State of Victoria does not warrant the accuracy or completeness of the information in this publication and any person using or relying upon such information does so on the basis that the State of Victoria shall bear no responsibility or liability whatsoever for any errors, faults, defects or omissions in the information.

The document is invalid if this cover sheet is removed or altered.

**ORIGINAL**

**NOT TO BE TAKEN FROM THE OFFICE OF TITLES**



VICTORIA

**CANCELLED**

REGISTER BOOK

VOL. 9014 FOL. 518

# Certificate of Title

UNDER THE "TRANSFER OF LAND ACT"

EDWARD VERGERS of Jumping Creek Road Wonga Park Orchardist - -  
is the proprietor of an estate in fee simple subject to the - - - - -  
encumbrances notified hereunder in ALL THAT piece of land coloured - -  
on the map hereon being Lot 3 on Plan of Subdivision No.99630 - - - - -  
and being part of Crown Section 12 Parish of Warrandyte - - - - -  
County of Evelyn - - - - -

VOL. 9014 FOL. 518

Issued under Regulation 12  
on the approval of the - -  
above Plan of Subdivision-



*J. W. Haggart*

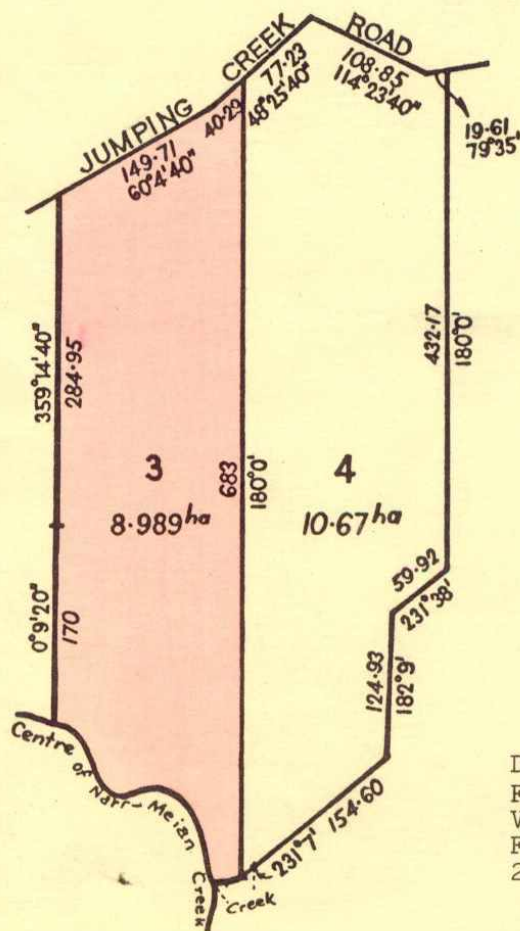
Assistant Registrar of Titles

ENCUMBRANCES REFERRED TO

Delivered  
on-line by  
LANDATA®

This document provides an image of a canceled folio of the Register. It is not a statement  
from the register of subsisting information in relation to the land to which it refers.

WARNING



DERIVED  
FROM  
VOL.8970  
FOL.944  
25/3/'74.

LENGTHS ARE IN METRES

AREAS (IF SHOWN) ARE IN HECTARES (ha)  
OR IN SQUARE METRES (m<sup>2</sup>)

THE WHOLE/OR PART OF  
THE WITHIN LAND HAS  
BEEN SUBDIVIDED SEE

Unregistered Plan //13575  
Misc. Plan  
LP. 113575

CAVEAT No. F204210 LODGED 18<sup>TH</sup> FEB. '74

Caveat transferred to new C/T

CAVEAT No. F564100 LODGED 23<sup>RD</sup> Dec. 74.

Resisting part of the land hereto Lot No 5 of 113575.  
Caveat transferred to new C/T

**CANCELLED**

Pursuant to Regulation 12 and Title issued as set out hereunder on 20<sup>th</sup> January 1975

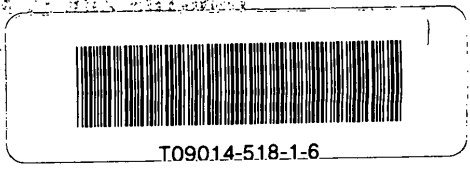
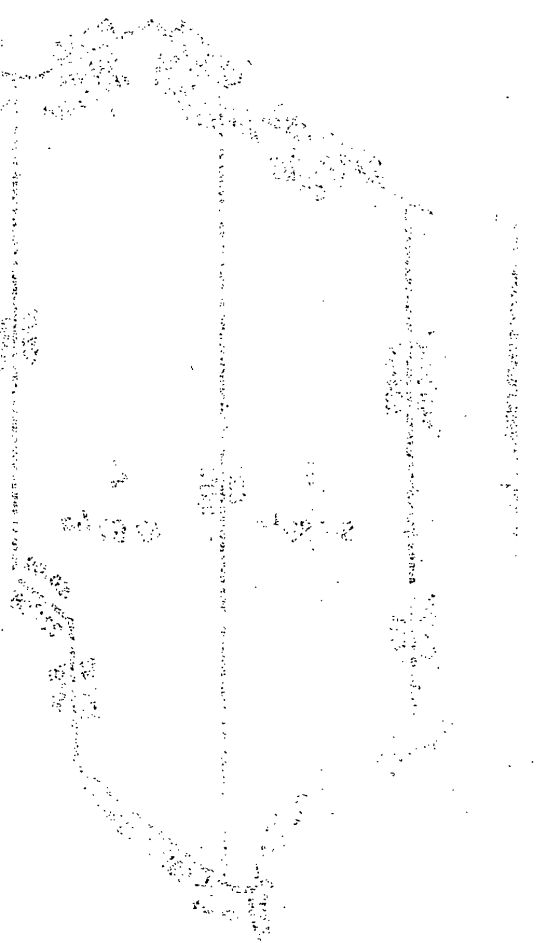
Plots 5 to 6 in Vol 9068 Fol 603  
to Vol 9068 Fol 604

L.P. 113575

**CANCELLED**



Faint, illegible text, possibly a description of the land or a legal notice.



Delivered on-line by LANDATA  
WARNING  
This document provides an image of a cancelled title of the Register. It is not a statement from the register of addressing information in relation to the land to which it refers.