



Imaged Document Cover Sheet

The document following this cover sheet is an imaged document supplied by LANDATA®, Secure Electronic Registries Victoria.

Document Type	Cancelled Title
Document Identification	9068/604
Number of Pages (excluding this cover sheet)	4
Document Assembled	15/05/2024 06:56

Copyright and disclaimer notice:

© State of Victoria. This publication is copyright and includes confidential information. No part may be reproduced by any process except in accordance with the provisions of the Copyright Act or pursuant to a written agreement. The State of Victoria does not warrant the accuracy or completeness of the information in this publication and any person using or relying upon such information does so on the basis that the State of Victoria shall bear no responsibility or liability whatsoever for any errors, faults, defects or omissions in the information.

The document is invalid if this cover sheet is removed or altered.

ORIGINAL

**NOT TO BE TAKEN FROM THE OFFICE
OF TITLES**



CANCELLED

REGISTER BOOK

VOL. 9068 FOL. 604

VICTORIA

Certificate of Title

UNDER THE "TRANSFER OF LAND ACT"

EDWARD VERGERS of Jumping Creek Road Wonga Park -----
Orchardist is the proprietor of an estate in fee simple subject --
to the encumbrances notified hereunder in ALL THAT piece of -----
land coloured on the map hereon being Lot 6 on Plan of -----
Subdivision No. 113575 Parish of Warrandyte County of Evelyn -

Issued under Regulation 12
on the approval of the --
above Plan of Subdivision-

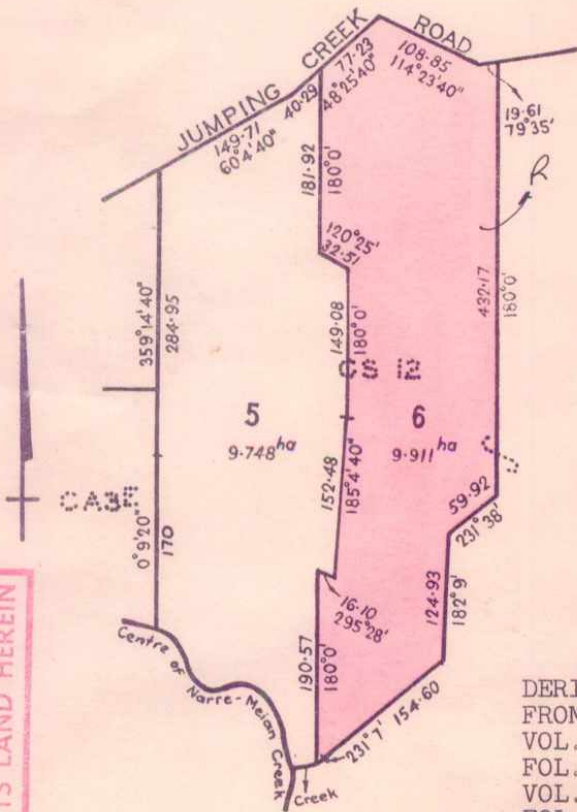
Assistant Registrar of Titles

ENCUMBRANCES REFERRED TO



Delivered
on-line by
LANDATA®

WARNING
This document provides an image of a cancelled folio of the Register. It is not a statement
from the register of subsisting information in relation to the land to which it refers.



PLAN 122749
AFFECTS LAND HEREIN

DERIVED
FROM
VOL. 9014
FOL. 518
VOL. 9014
FOL. 519
20/1/'75.

LENGTHS ARE IN METRES

AREAS (IF SHOWN) ARE IN HECTARES (ha)
OR IN SQUARE METRES (m²)

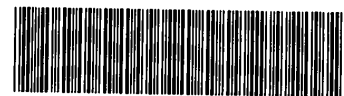
~~GRAHAM ALEXANDER CAMPBELL and MARGARET
 JOYCE CAMPBELL both of "Gramer Lodge"
 Jumping Creek Road Wonga Park
 Thoroughbred Breeders are now
 JOINT PROPRIETORS
 Registered 26th August 1977
 No. ~~G762114~~~~

W. H. Hoggart
 Assistant Registrar of Titles
 -9 SEP 1977

CANCELLED
 SEE VOL. 9231 FOLs 485 + 486
 ENTERED ~~14th~~ ~~September~~ 1977
 No. ~~G762114~~ 26th AUGUST 1977
 G786023



CANCELLED



T09068-604-1-9

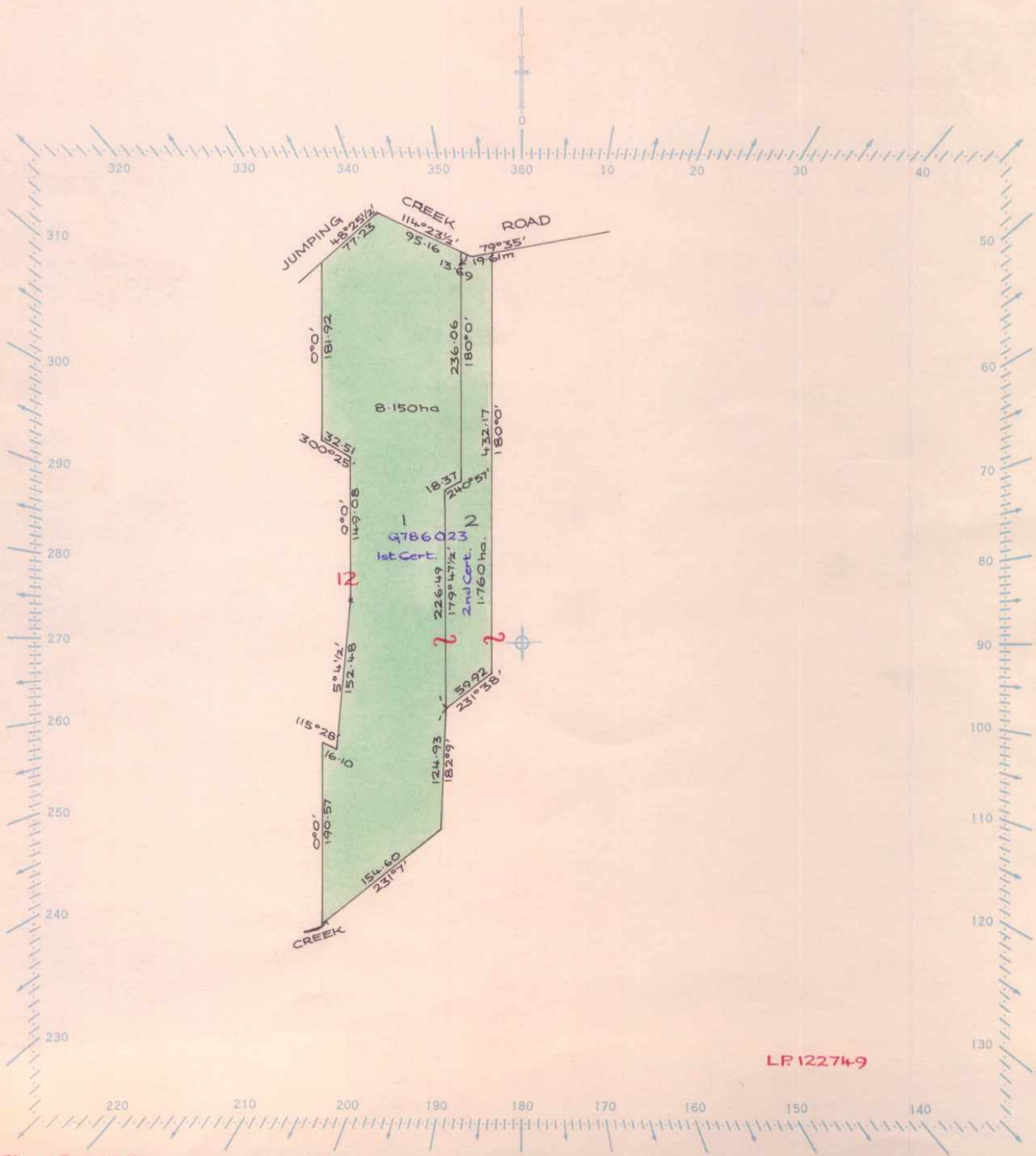
SCALE: 1:5000

Volume 9068 Folio 604

LENGTHS ARE IN METRE

Delivered
on-line by
LANDATA®

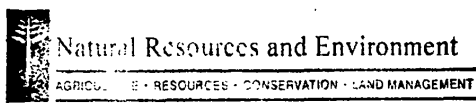
WARNING
This document provides an image of a cancelled folio of the Register. It is not a statement
from the register of subsisting information in relation to the land to which it refers.



LP122749

SK C.D. 3-10-77

Delivered on-line by LANDATA®
WARNING
This document provides an image of a cancelled folio of the Register. It is not a statement from the register of subsisting information in relation to the land to which it refers.



**INTENTIONALLY
BLANK**

