



Imaged Document Cover Sheet

The document following this cover sheet is an imaged document supplied by LANDATA®, Secure Electronic Registries Victoria.

Document Type	Cancelled Title
Document Identification	9314/650
Number of Pages (excluding this cover sheet)	10
Document Assembled	15/05/2024 07:38

Copyright and disclaimer notice:

© State of Victoria. This publication is copyright and includes confidential information. No part may be reproduced by any process except in accordance with the provisions of the Copyright Act or pursuant to a written agreement. The State of Victoria does not warrant the accuracy or completeness of the information in this publication and any person using or relying upon such information does so on the basis that the State of Victoria shall bear no responsibility or liability whatsoever for any errors, faults, defects or omissions in the information.

The document is invalid if this cover sheet is removed or altered.

ORIGINAL

NOT TO BE TAKEN FROM THE OFFICE OF TITLES



VICTORIA

CANCELLED REGISTER BOOK

VOL. 9314 FOL. 650

Certificate of Title

UNDER THE "TRANSFER OF LAND ACT"

GRAHAM ALEXANDER CAMPBELL and MARGARET JOYCE CAMPBELL both of "Gramar Lodge"-
 Jumping Creek Road Wonga Park Thoroughbred Breeders are joint proprietors of-
 an estate in fee simple subject to the encumbrances notified hereunder in- --
ALL THAT piece of land coloured red on the map on the sheet annexed hereto- -
 being the land in Plan of Consolidation No.107905 and being part of Crown-
 Section 12 Parish of Warrandyte County of Evelyn- - - - -

Issued pursuant to Section 97A (2)
of the Transfer of Land Act 1958

E. Harris

Assistant Registrar of Titles



ENCUMBRANCES REFERRED TO

MORTGAGE H327307- - - - -

The above mortgage is discharged as to part being the land in Transfer No. **K61975** Dated **25TH AUGUST 1982**



The above mortgage is discharged as to part being the land in **-L120885N-** Transfer No. **L120886K** Dated **29TH JUNE 1984**



PLAN S-860/
AFFECTS LAND HEREIN

PLAN LP 146442 B
AFFECTS LAND HEREIN

PLAN LP 146443 P
AFFECTS LAND HEREIN

MEASUREMENTS ARE IN

Derived from Vols. 9251 Fols. 112
9293 723

14th March 1979

Delivered on-line by LANDATA®

WARNING
This document provides an image of a cancelled folio of the Register. It is not a statement from the register of subsisting information in relation to the land to which it refers.

AMENDED
- 8 MAY 1985
NO. L 245731 w



MORTGAGE TO BANK OF NEW SOUTH WALES

DISCHARGED AS TO PART
REGISTERED
TRANSFER No. K 61975
DATED 25th AUGUST 1982
No. 1
DISCHARGED AS TO PART
DATED 29th JUNE 1984
L 120884
B.C.W. VICTORIA
OFFICE OF TITLES
M.S. VICTORIA

CAVEAT NO. J826508 LODGED 19 FEB 1982

affecting part of the land herein Plan
CAVEAT WILL LAPSE ON



REGISTRATION OF K 61975
~~5-06-1982~~

TRANSFER AS TO PART No. K 61975
registered 25th AUGUST 1982
CANCELLED AS TO PART
See Vol. 9482 Fol. 783



AREA: 7.051 Ha

CAVEAT No. L141641H LODGED 11 JUL 1984

Caveat transferred to new C/E

TRANSFER AS TO PART No. L120886K
registered 29th JUNE 1984
CANCELLED AS TO PART
See Vol. 9575 Fol. 405



TRANSFER AS TO BALANCE No. L120887G
registered 29th JUNE 1984
CANCELLED See Vol. 9575 Fol. 406-407-

CANCELLED




AMENDED (folio added)
- 8 MAY 1985

NO. L 24573 W



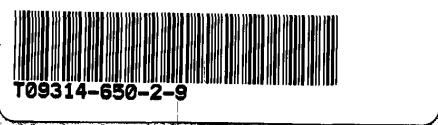
T09314-650-1-1

Delivered on-line by LANDATA
WARNING
This document provides an image of a cancelled folio of the Register. It is not a statement from the register of subsisting information in relation to the land to which it refers.

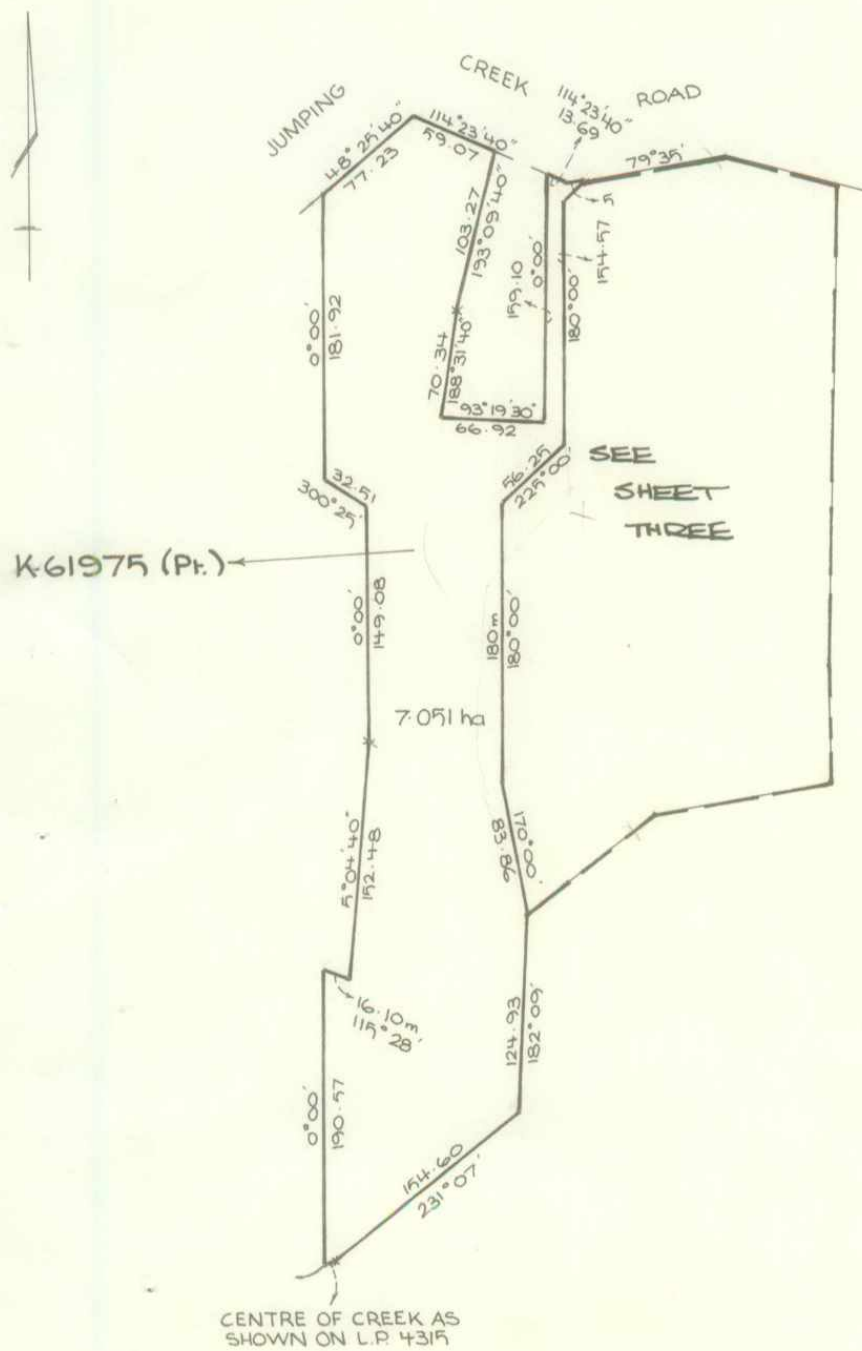
 **Natural Resources and Environment**
AGRICULTURE • RESOURCES • CONSERVATION • LAND MANAGEMENT

**INTENTIONALLY
BLANK**

Delivered on-line by LANDATA®
This document provides an image of a cancelled folio of the Register. It is not a statement from the register of Planning Information in relation to the land to which it refers.
WARNING



V.9314 F.650
LENGTHS ARE IN METRES



Delivered
on-line by
LANDATA®

WARNING
This document provides an image of a cancelled folio of the Register. It is not a statement from the register of subsisting information in relation to the land to which it refers.

SCALE 1:4000
SK. DC. 4. 28.9.82

SHEET ONE

ANNEXED SHEET REFERRED TO IN
CERTIFICATE OF TITLE VOL.

FOL

ASSISTANT REGISTRAR OF TITLES

Delivered
on-line by
LANDATA®

WARNING
This document provides an image of a cancelled folio of the Register. It is not a statement
from the register of subsisting information in relation to the land to which it refers.

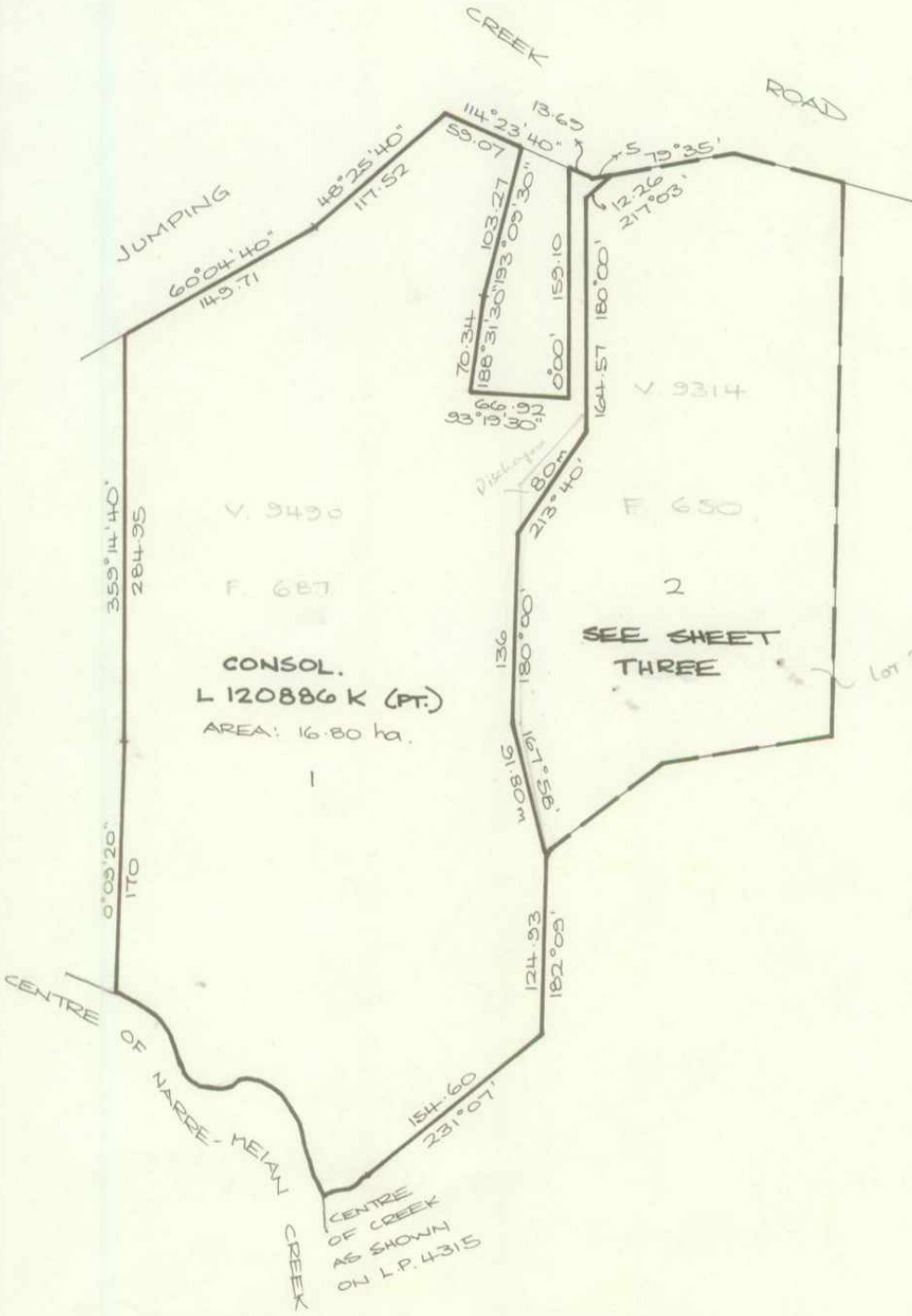


T09314-650-3-7

VOL. 9314 FOL. 650
VOL. 9490 FOL. 687

Delivered
on-line by
LANDATA®

WARNING
This document provides an image of a cancelled folio of the Register. It is not a statement
from the register of subsisting information in relation to the land to which it refers.



L.P. 146412
SHEET TWO

ANNEXED SHEET REFERRED TO IN
CERTIFICATE OF TITLE VOL.

FOL.

ASSISTANT REGISTRAR OF TITLES

Warning
This document provides an image of a cancelled folio of the Register. It is not a statement
from the register of subsisting information in relation to the land to which it refers.
on-line by
LANDATA®



T09314-650-4-5

ANNEXED SHEET REFERRED TO IN
CERTIFICATE OF TITLE VOL.

FOL.

ASSISTANT REGISTRAR OF TITLES

Delivered
on-line by
LANDATA®

WARNING
This document provides an image of a cancelled folio of the Register. It is not a statement
from the register of subsisting information in relation to the land to which it refers.



T09314-650-5-3