



Imaged Document Cover Sheet

The document following this cover sheet is an imaged document supplied by LANDATA®, Secure Electronic Registries Victoria.

Document Type	Plan
Document Identification	LP126750
Number of Pages (excluding this cover sheet)	1
Document Assembled	20/05/2024 15:06

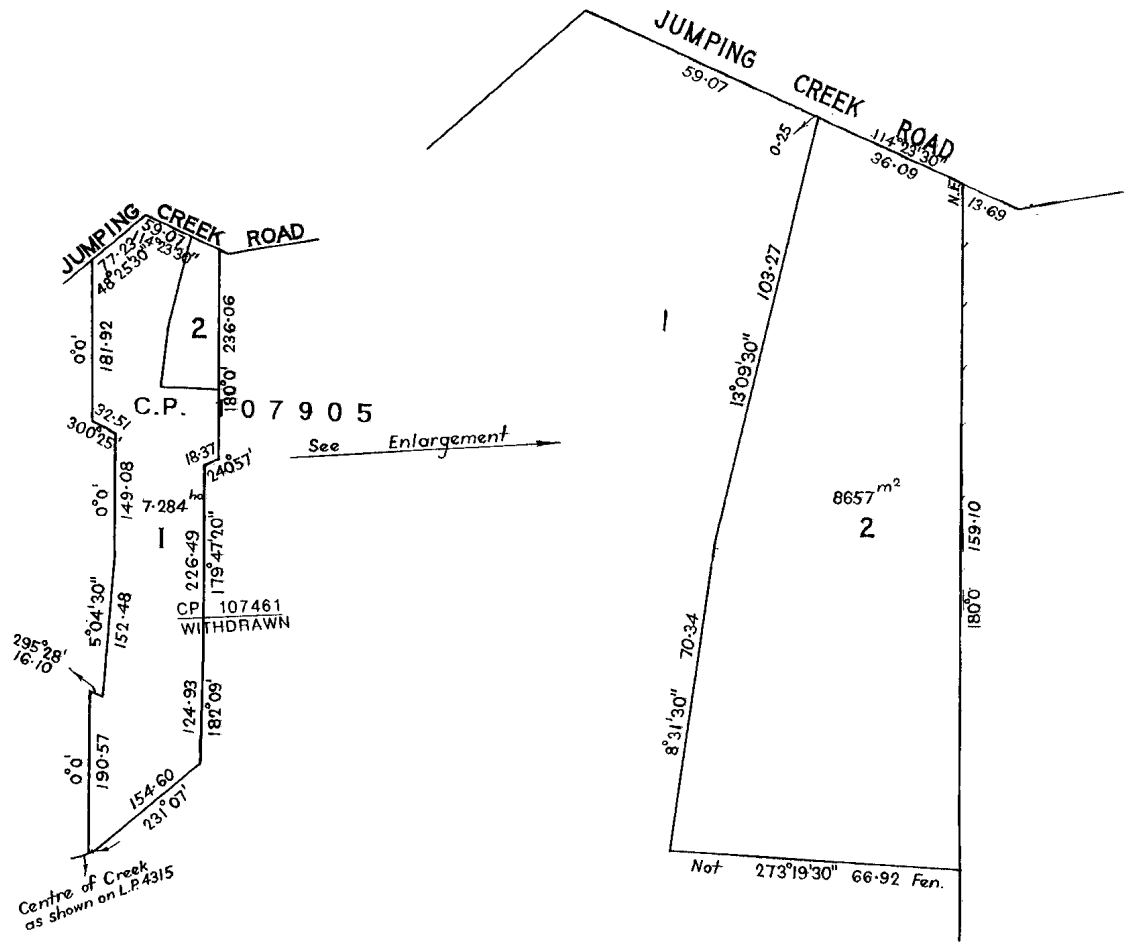
Copyright and disclaimer notice:

© State of Victoria. This publication is copyright. No part may be reproduced by any process except in accordance with the provisions of the Copyright Act 1968 (Cth) and for the purposes of Section 32 of the Sale of Land Act 1962 or pursuant to a written agreement. The information is only valid at the time and in the form obtained from the LANDATA® System. None of the State of Victoria, LANDATA®, Secure Electronic Registries Victoria Pty Ltd (ABN 86 627 986 396) as trustee for the Secure Electronic Registries Victoria Trust (ABN 83 206 746 897) accept responsibility for any subsequent release, publication or reproduction of the information.

The document is invalid if this cover sheet is removed or altered.

LP126750S
EDITION 1
 APPROVED 26/6/78

<p>PLAN OF SUBDIVISION</p> <p>OF PART OF CROWN SECTION 12</p> <p>PARISH OF WARRANDYTE</p> <p>COUNTY OF EVELYN</p> <p>SCALE 100 50 0 100 200 300 LENGTHS ARE IN METRES</p>	<p>APPROPRIATIONS</p> <p><i>Nil.</i></p>	<p>ENCUMBRANCES & OTHER NOTATIONS</p> <p><i>Lot 1 is not the result of this survey. Survey - 3rd. February, 1978. Date - 7th. February, 1978.</i></p>
	<p>CHART NO. 34.</p>	



SCALE OF ENLARGEMENT
 20 10 0 20 40 60
 LENGTHS ARE IN METRES